

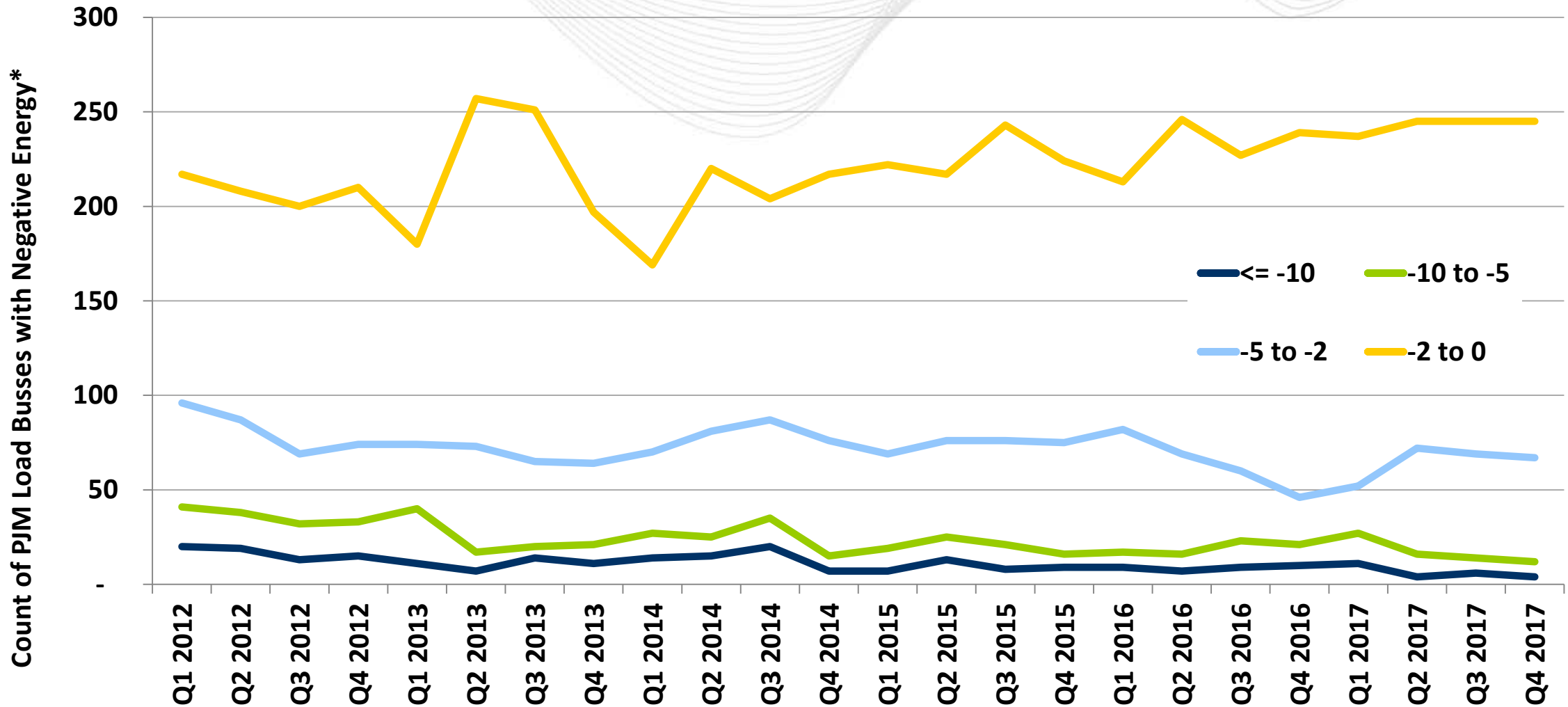


Net Energy Injections at Load Busses Quarterly Report

Ken Schuyler
Manager, Renewable Services
Market Implementation Committee
February 7, 2018

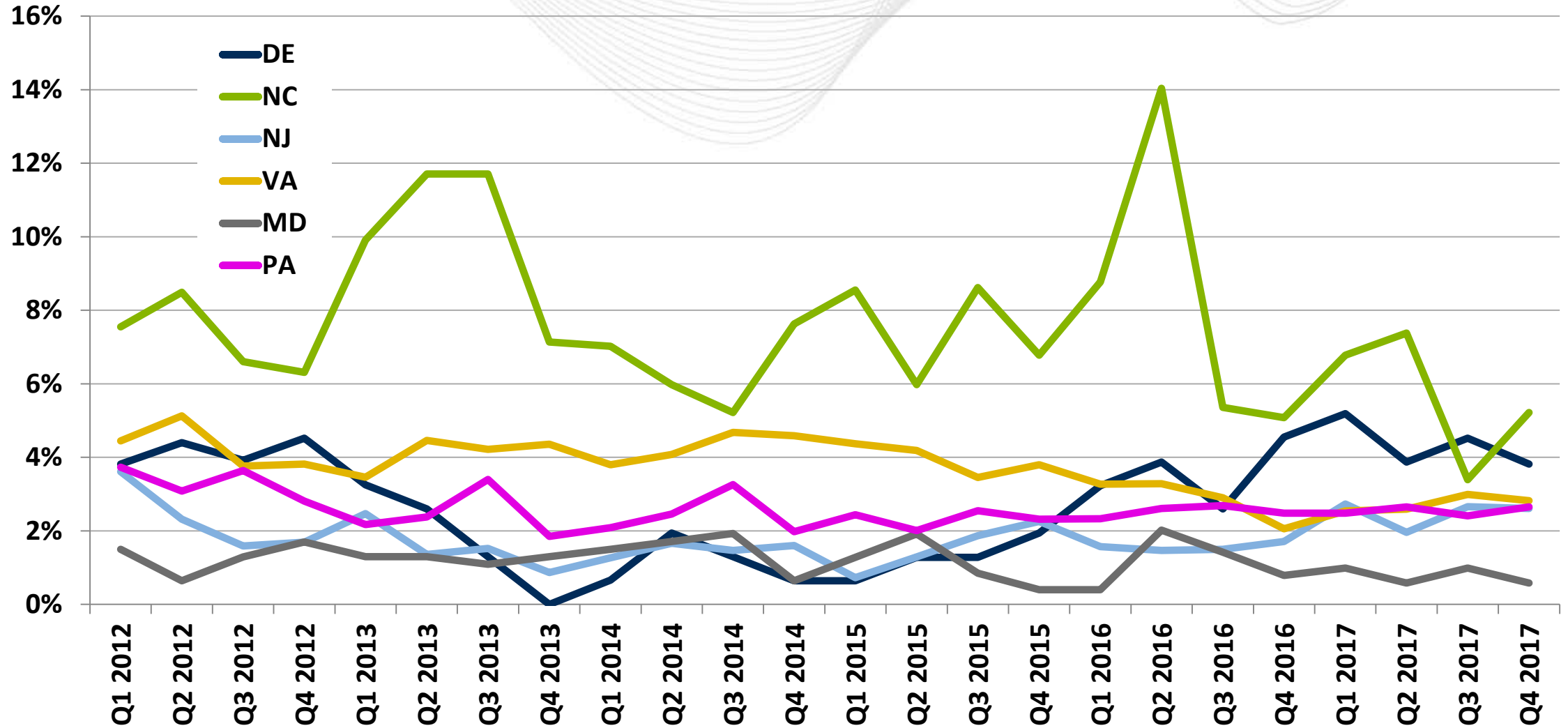
- Follow up effort to the Net Energy Metering Senior Task Force (NEMSTF) recommendation
 - PJM will implement a quarterly review to track and trend overall incidents of net energy injections at load busses
- PJM Manual 28 Requirement
 - PJM will assess and trend quarterly the degree of net energy injections at load busses modeled in the PJM network system model (i.e., reverse power flows) in order to detect and correct any modeling issues and to identify any generation in excess of load that appears at a load bus.

PJM Load Busses with Negative Energy on Average

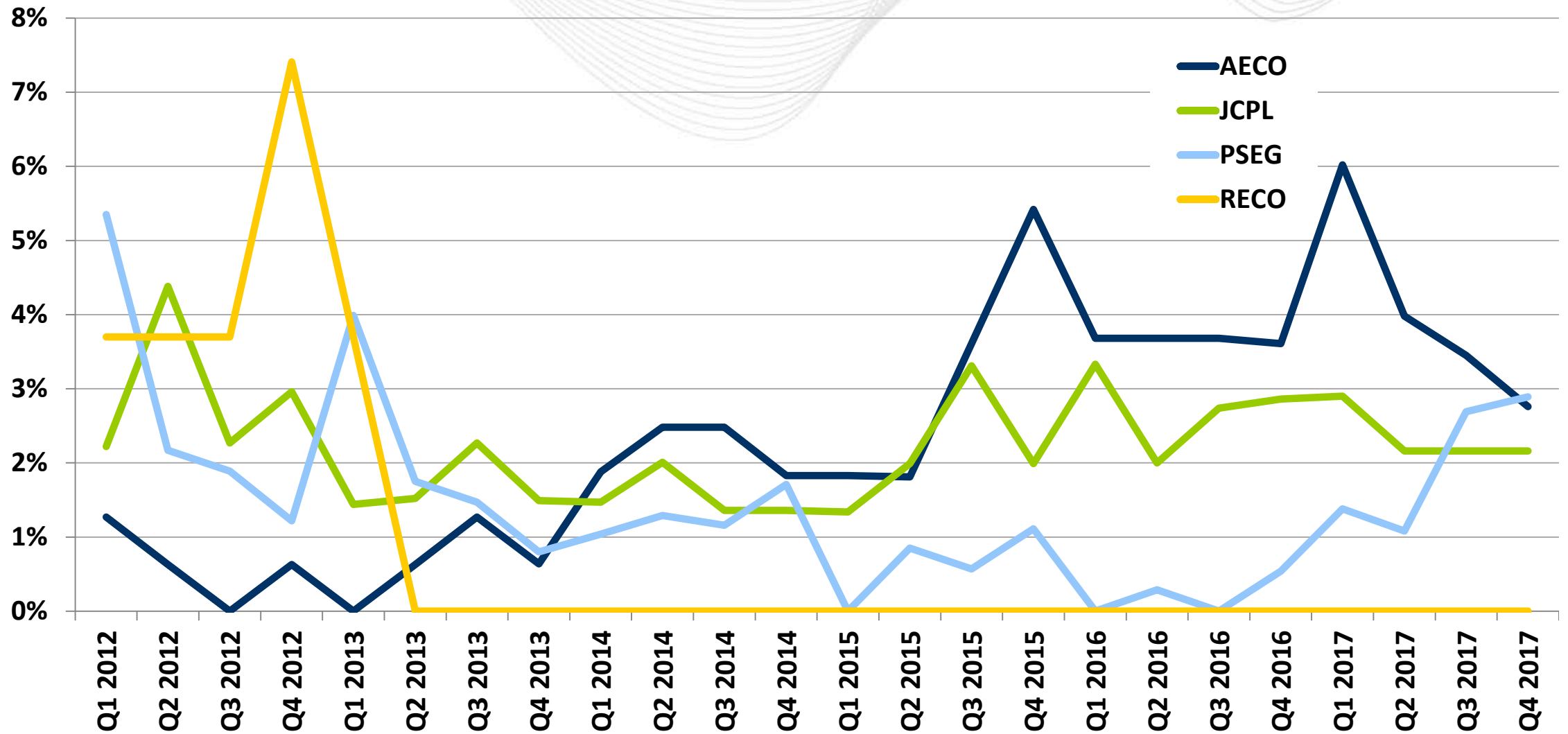




* The total number of PJM load busses is 9,359 as of the most recent model build.

Mid-Atlantic State Load Busses with Negative Energy on Average



New Jersey Load Busses with Negative Energy on Average



- The number of load busses with negative values on average remained relatively unchanged in Q4 (slide 3).
- Over the five-plus year period covered by this report:
 - PJM load busses:  15.6%
 - PJM load busses with negative energy:  12.3% (slide 3)
- In the PSEG zone (slide 5), recent increases in the percentage of load busses with negative values are being investigated. The AECO zone saw a decrease in its percentage for the third consecutive quarter.
- PJM continues to track this data to improve its EMS Network Model. To date, trends have not been indicative of an underlying Net Energy Metering issue.