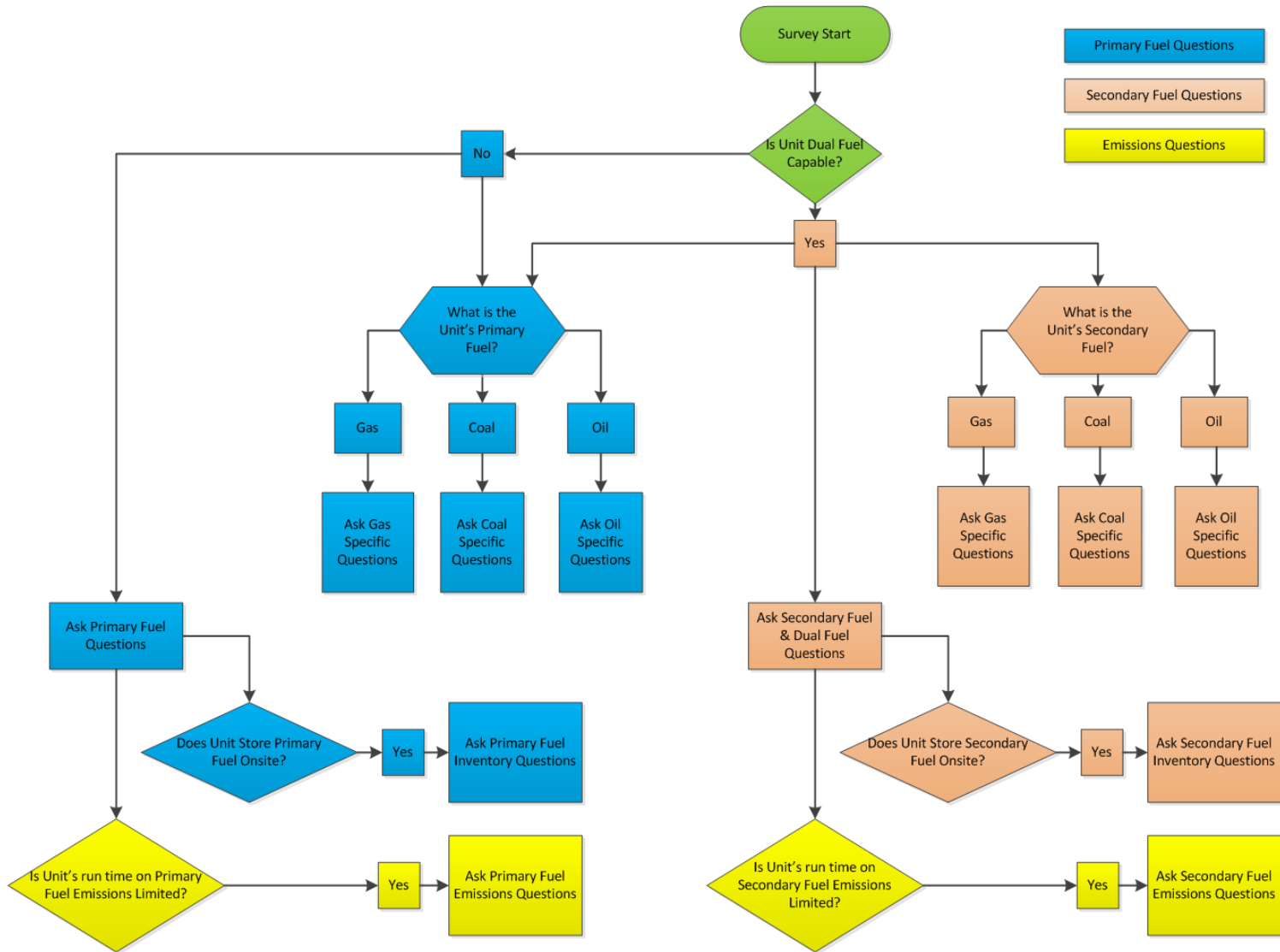


Seasonal Fuel Survey

September / October 2017
System Operations Subcommittee
Operating Committee



- Required for reliable operations planning purposes
- Done as a baseline of fuel supply and reserves ahead of winter season
- Intended to enhance PJM situational awareness in preparation for severe weather
- Primary focus on three subsets of data:
 - Fuel Inventory
 - Fuel Supply
 - Emissions limitations



Survey-related enhancements available in eDART sandbox	eDART fall release - includes survey-related enhancements	Fuel survey available - notification sent to GO eDART contacts	Fuel survey responses due in eDART
9/15/17	9/27/2017	10/13/2017	11/17/2017
Allows eDART users to get more familiar with survey functionality	New functionality includes: enhanced download and upload capability and ability to save partially completed responses	Survey data "pre-populated" where possible, based on 2016 responses	All data should be uploaded or manually entered into eDART by COB on 11/17