



2018 Day Ahead Scheduling Reserve Requirement

Thomas Hauske
Sr Lead Engineer, Operation Analysis & Compliance
Operating Committee
October 10, 2017



DASR Req. = LFE + FOR Components

- Time Period Winter 2015 through Fall 2017

Load Forecast Error (LFE) Component

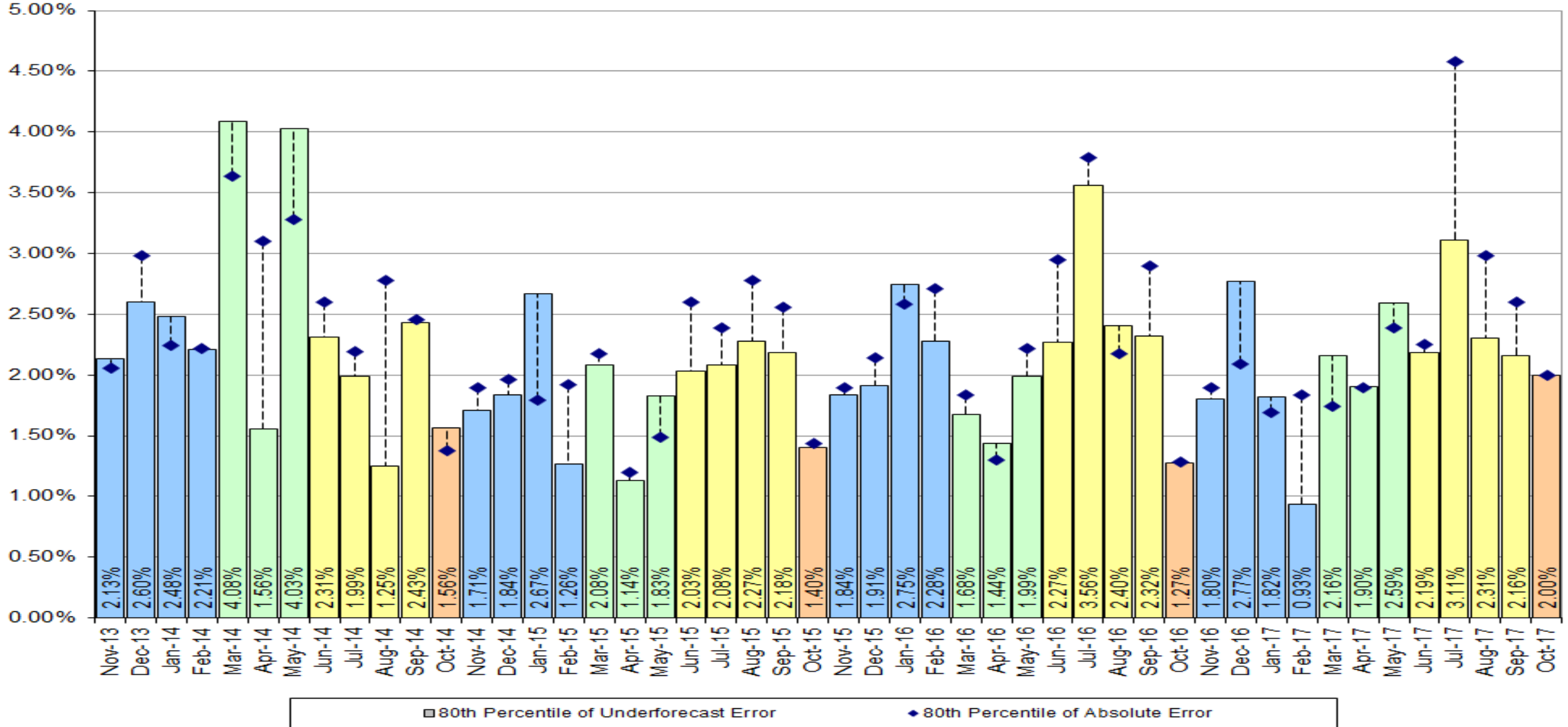
- 3 year average of Under forecasted LFE

Forced Outage Rate Component

- 3 year average of eDART Forced Outages, submitted after D-1 18:00, effective after D 8:00 ending before D 20:00

Season	Load Forecast Error Component 80th Percentile Absolute Error				Forced Outage Rate Component All Forced Outage Tickets				DA Sched.
	2015	2016	2017	Rollup	2015	2016	2017	Rollup	Req.
Winter	1.87%	2.19%	1.83%	1.97%	3.44%	3.04%	2.90%	3.13%	5.09%
Spring	1.68%	1.70%	2.22%	1.87%	3.71%	2.63%	3.55%	3.30%	5.16%
Summer	2.14%	2.64%	2.44%	2.41%	3.62%	3.16%	3.30%	3.36%	5.77%
Fall	1.40%	1.27%	2.00%	1.56%	2.69%	3.04%		2.87%	4.43%
Annual				2.05%				3.24%	5.29%

- 2018 LFE component is 2.05% (down 0.08%)
- 2018 FOR component is 3.24% (down 0.10%)
- Preliminary 2018 DASR Requirement is 5.29%



- 2017 DASR requirement was 5.48%
- Preliminary 2018 DASR requirement is 5.29%
- Small decrease in Load Forecast Error & small decrease in Forced Outage Rate component
- Review in October, Approval in November, Implement in January
- Final value will be incorporated into up coming Manual 13 Changes