



2018 Day Ahead Scheduling Reserve Requirement



Eric Endress
Engineer, Operation Analysis & Compliance
OC
November 7, 2017

DASR Req. = LFE + FOR Components

- Time Period Winter 2015 through Fall 2017

Load Forecast Error (LFE) Component

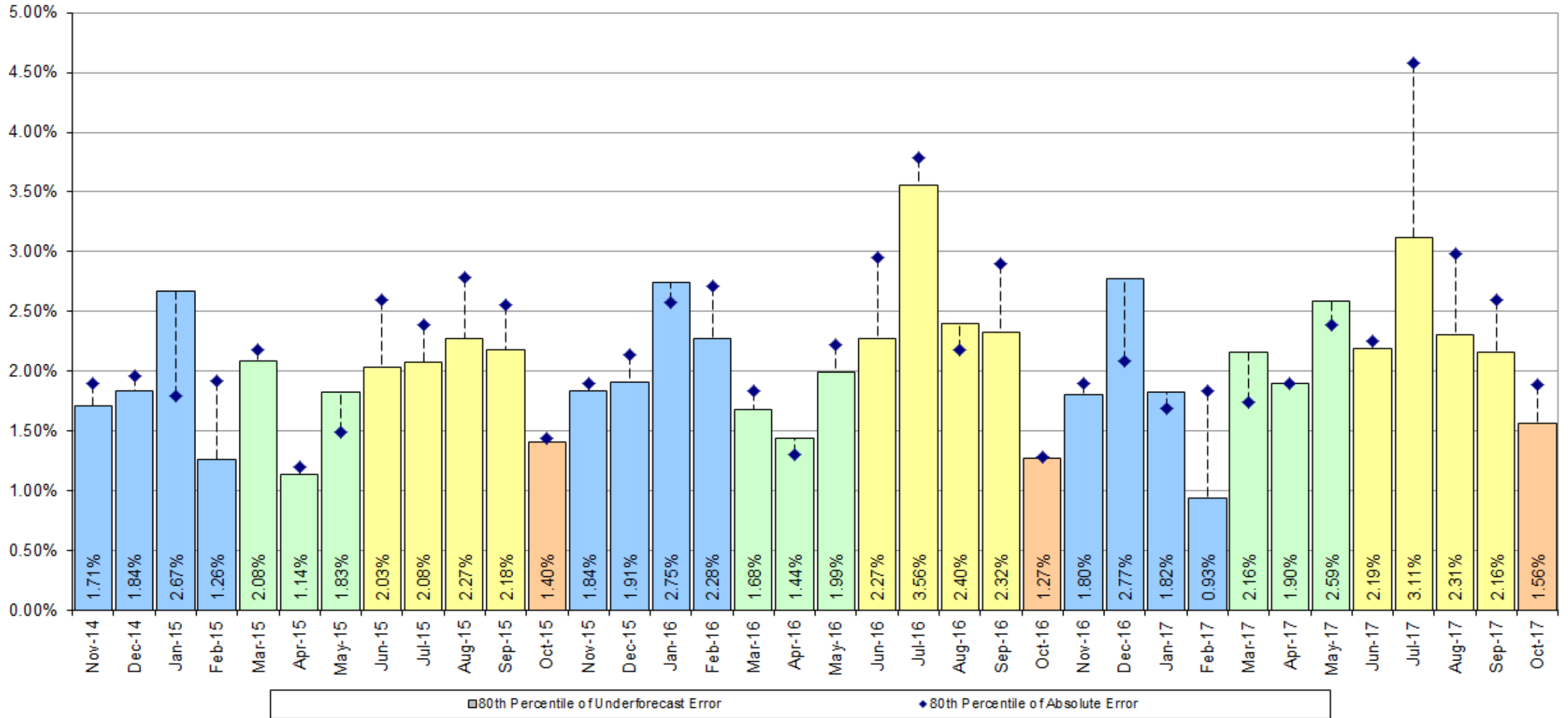
- 3 year average of Under forecasted LFE

Forced Outage Rate Component

- 3 year average of eDART Forced Outages, submitted after D-1 18:00, effective after D 8:00 ending before D 20:00

Season	Load Forecast Error Component 80th Percentile Absolute Error				Forced Outage Rate Component All Forced Outage Tickets				DA Sched.
	2015	2016	2017	Rollup	2015	2016	2017	Rollup	Req.
Winter	1.87%	2.19%	1.83%	1.97%	3.44%	3.04%	2.90%	3.13%	5.09%
Spring	1.68%	1.70%	2.22%	1.87%	3.71%	2.63%	3.55%	3.30%	5.16%
Summer	2.14%	2.64%	2.44%	2.41%	3.62%	3.16%	3.02%	3.27%	5.67%
Fall	1.40%	1.27%	1.56%	1.41%	2.69%	3.04%	4.55%	3.43%	4.84%
Annual				2.04%				3.24%	5.28%

- 2018 LFE component is 2.04% (down 0.09%)
- 2018 FOR component is 3.24% (down 0.10%)
- Final 2018 DASR Requirement is 5.28%



- 2017 DASR requirement was 5.48%
- Final 2018 DASR requirement is 5.28%
- Small decrease in Load Forecast Error & small decrease in Forced Outage Rate component
- Review in October, Approval in November, Implement in January
- Final 2018 DASR value will be incorporated into upcoming Manual 13 Changes