

***PJM Generator Interconnection
U1-089 Paper Tap 20MW
Combined Feasibility & Impact Studies***

July 2008
DMS # 492601

General

Queue U1-089 (Paper Tap 69 kV) is a Kimberly-Clark Corporation request to obtain 20 MWs of CIRs (Capacity Interconnection Rights) for a 55 MW culm-fired (anthracite coal waste) generator interconnection that has been operating as an Energy Resource since 1986 under a PPA (Power Purchase Agreement) with PECO Energy. U1-089 is located at Kimberly Clark Corporation, One Avenue of the States, Chester, Delaware County, Pennsylvania. Queue U1-089 Capacity and energy are already available.

Direct Connection

Queue U1-089 is already connected as shown on Figure 1 below. **No additional Direct Connection facilities are required.**

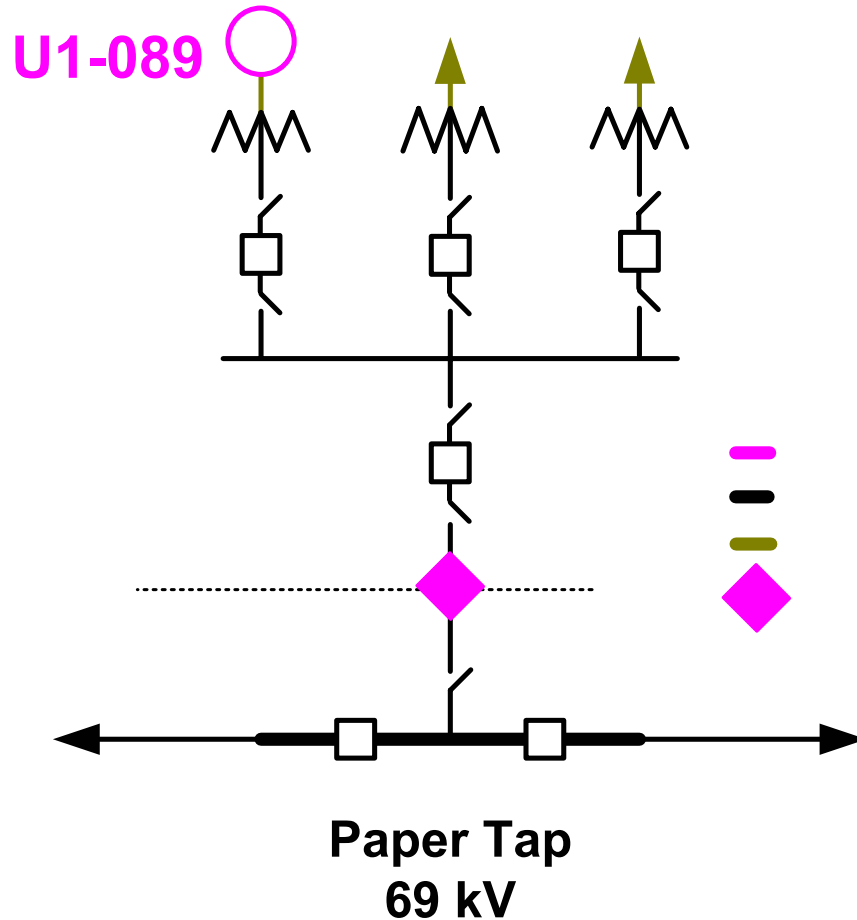


Figure 1

Network Impacts

Queue U1-089 was studied as a 20 MW Capacity Resource connected to the Paper Tap 69 kV bus. This interconnection already has grandfathered interconnection Rights as a 55 MW Energy Resource. Queue U1-089 was evaluated for compliance with reliability criteria (associated with the new 20 MW Capacity Interconnection Rights) for summer peak conditions in 2012. Potential Network impacts were as follows:

Generator Deliverability

(Normal non-contingency with all transmission facilities in service, and Single or N-1 contingencies for the Capacity portion only of the interconnection)

No problems were identified

Multiple Facility Contingency

(Double Circuit Tower Line, Stuck Breaker and Bus Fault contingencies for the full energy output)

Not required. This previously connected generation has grandfathered rights as a 55 MW Energy Resource.

Short Circuit

Not applicable, there is no change to generator and transformer impedance for this previously connected generator.

Stability Analysis

Not required for this previously connected generator.

Contribution to Previously Identified Overloads

(This project contributes to the following contingency overloads, i.e. "Network Impacts", identified for earlier generation or transmission interconnection projects in the PJM Queue)

No problems were identified

New System Reinforcements

(Upgrades required to mitigate reliability criteria violations, i.e. "Network Impacts", initially caused by the addition of Queue R36 generation)

None

Contribution to Previously Identified System Reinforcements

(Overloads initially caused by prior Queue positions with additional contribution to overloading by this project)

None identified.