

# 2011 Day Ahead Scheduling Reserve Requirement

Performance Compliance

## **DASR Req. = LFE + FOR Components**

- Time Period Winter 2008 through Fall 2010

### Load Forecast Error (LFE) Component

- 3 year average of Under forecasted LFE

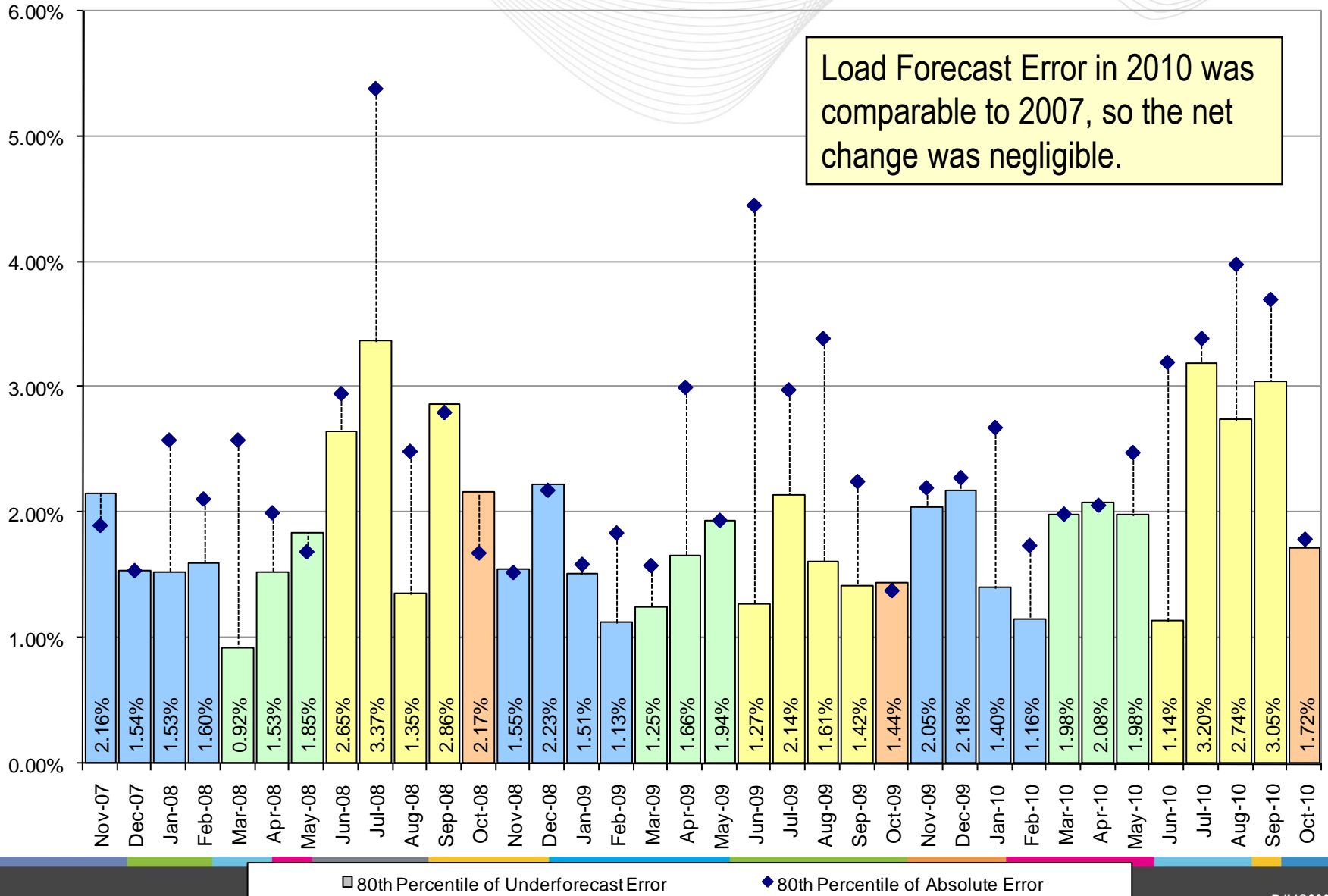
### Forced Outage Rate Component

- 3 year average of eDART Forced Outages, submitted after D-1 18:00, effective after D 8:00 ending before D 20:00

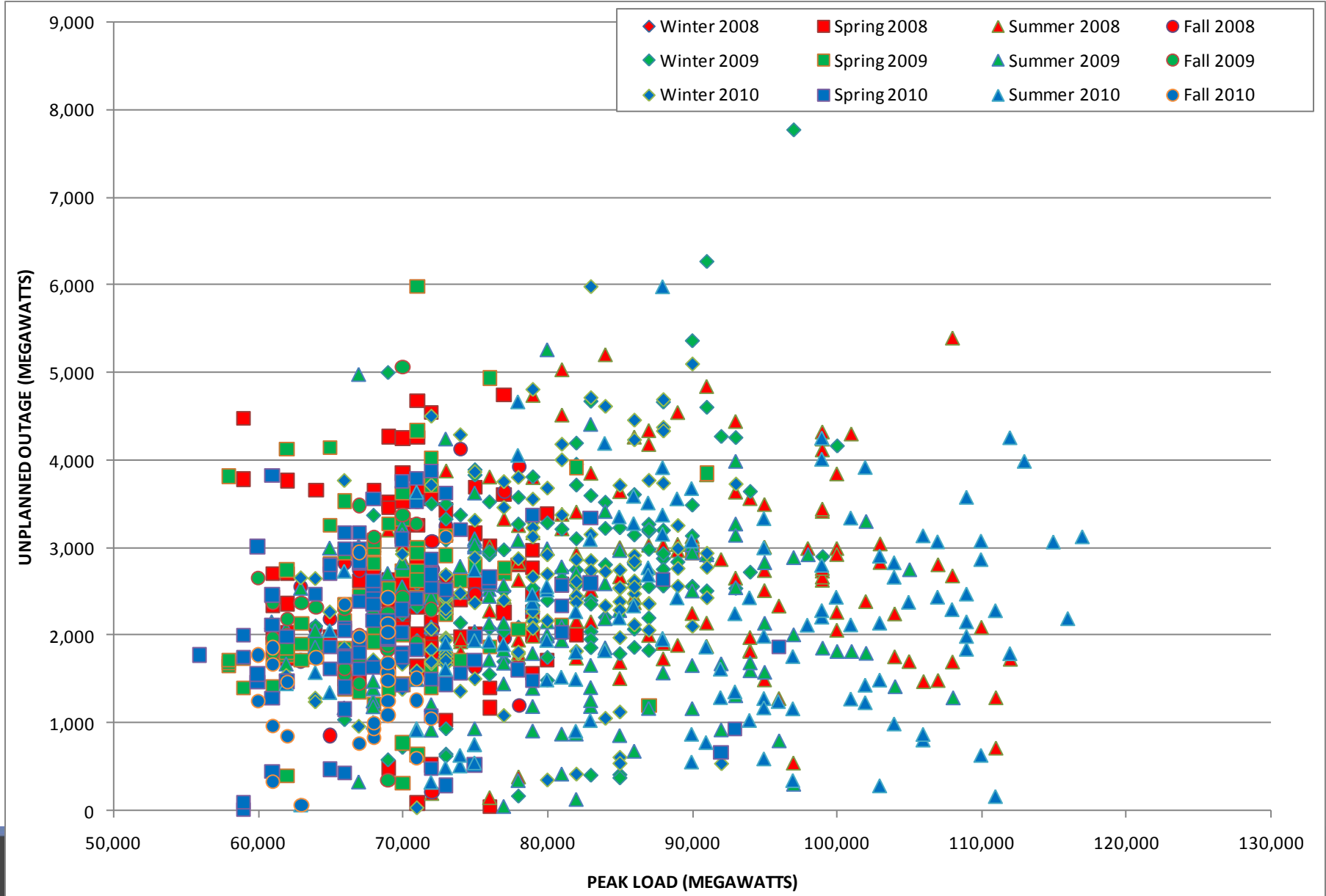
Season	Load Forecast Error Component 80th Percentile Absolute Error				Forced Outage Rate Component All Forced Outage Tickets				DA Sched.
	2008	2009	2010	Rollup	2008	2009	2010	Rollup	Req.
Winter	1.71%	1.60%	1.70%	1.67%	5.28%	5.39%	5.78%	5.48%	7.15%
Spring	1.43%	1.62%	2.01%	1.69%	6.34%	5.58%	5.20%	5.71%	7.39%
Summer	2.56%	1.61%	2.53%	2.23%	5.83%	4.92%	4.58%	5.11%	7.35%
Fall	2.17%	1.44%	1.72%	1.78%	5.23%	4.84%	3.85%	4.64%	6.42%
Annual				1.87%				5.23%	7.11%

- 2011 LFE component is 1.87% (down 0.03%)
- 2011 FOR component is 5.23% (up 0.25%)
- Total 2011 DASR Requirement is 7.11%

# Load Forecast Error: Under-forecasts



# RFC Forced Outages, Winter 2008 to Fall 2010



- 2010 DASR Requirement was 6.88%, propose 7.11%
- Small increase in Load Forecast Error component
- Uptick again in Forced Outage Rate component
  - As predicted last year, FOR value increased
  - 2007 values were lowest of last 4 years
- Review in November, Approval in December, Implement in January