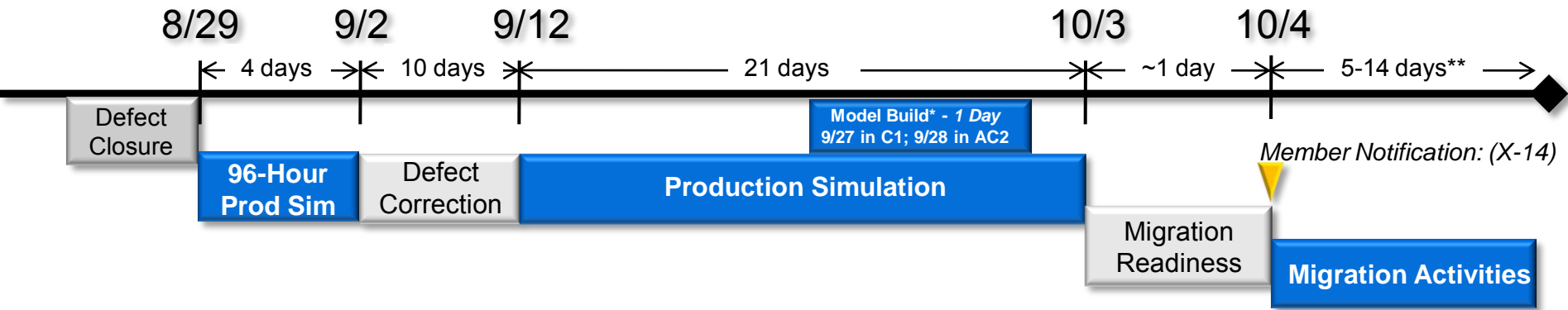


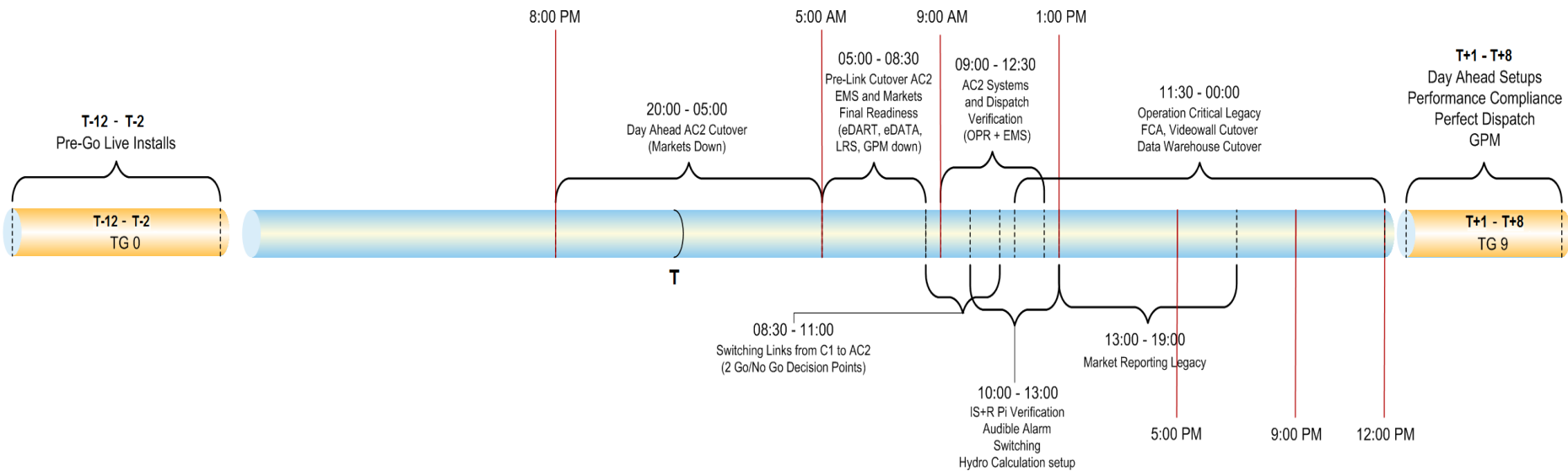
# AC<sup>2</sup> Go-Live Communications

## September Committee Meetings

- AC<sup>2</sup> Go-Live Date
- AC<sup>2</sup> Timeline
- AC<sup>2</sup> Detailed Go-Live Timeline
- Link Cutover Plan
- Tool/Member/External Impact
- AC<sup>2</sup> Go-Live Support

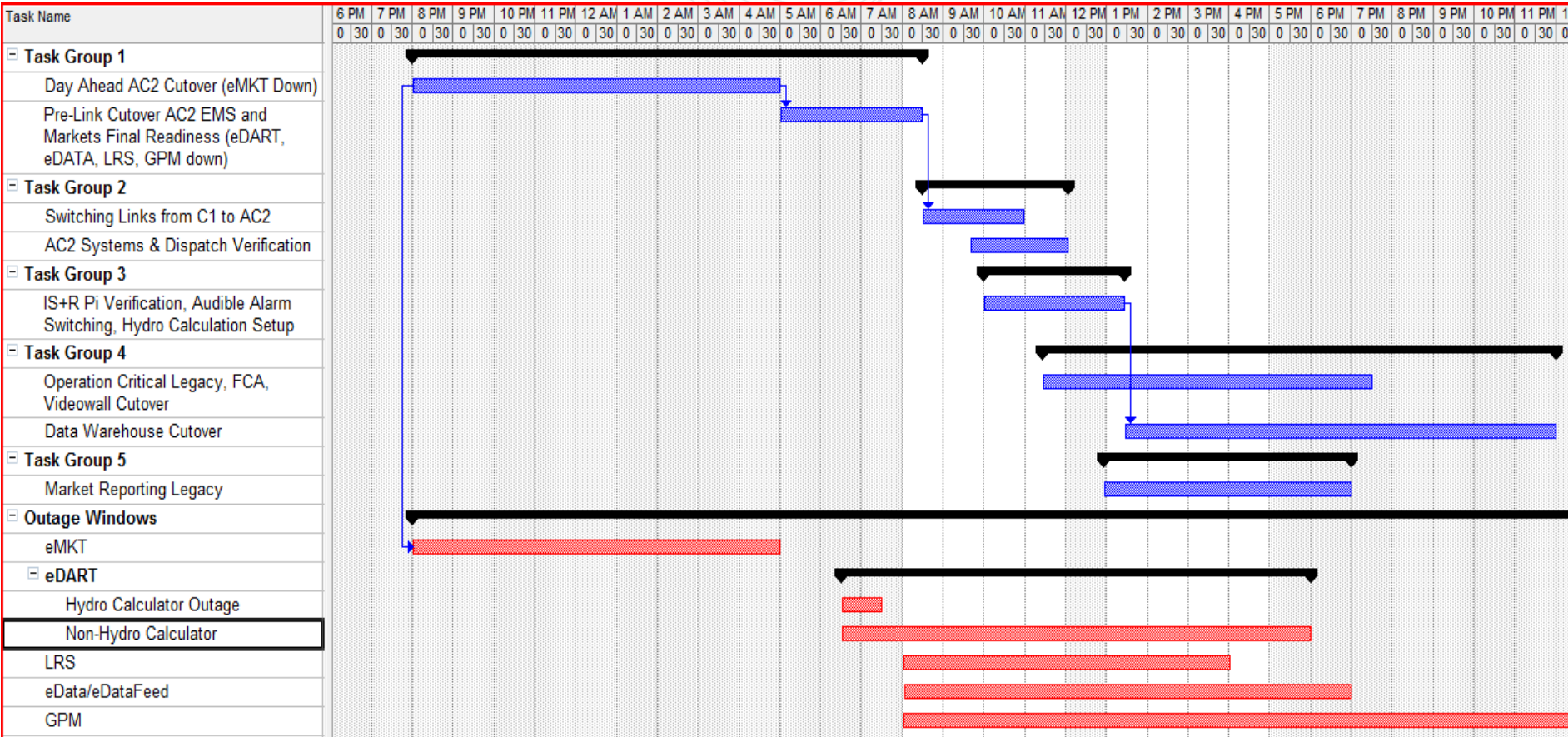
- Completion of targeted defects prior to start of last Production Simulation.
  - 96 Hour Stability Run completed early September.
  - Final Production Simulation begun September 12<sup>th</sup>.
- PJM EMS Fall Model Build is targeted for September 27<sup>th</sup> – September 28<sup>th</sup>.
- Targeted Go-Live Window is projected to occur between October 11<sup>th</sup> and November 1<sup>st</sup>.
  - Target Go-Live Date impacted by successful completion of final Production Simulation.
- PJM will communicate changes through PJM Committee Structure, Member Services, and e-mail.





- 08:10 to 08:15 – Interruption to ISN and External Links
  - ✓ NERC ISN, Duke, Entergy, Hydro Quebec, MISO, NEISO, NYISO, Southern Company, IESO, TVA, VAP
- 08:30 to 09:00 – Group A Link Failovers
  - ✓ ACE\_DPL, AEPT, AP, ATSI, BC, BLEG, CALP, CECD, CES, CET, CPS, DEMI, DEMW, DLCO, DOM, DPLT, EXG, GenOn, GPU, NRG, ODEC, PE, PEP, PLG, PLT, PRGE, PS, RECO, SHEL, UGI
- 09:00 to 09:30 – Group B Link Failovers
  - ✓ AEPD, APX, BUCK, CPP, DPLG, EDPR, EME, FEGMS, IBDR, TNSK, WEP
- 09:30 to 10:15 – PJM Server Failovers
  - ✓ Link Failover between AC1 and AC2
  - ✓ Link Failover between Communication Servers within AC1 and AC2

# AC<sup>2</sup> Go-Live Timeline – Tool Impact (Based on High Level Plan as of 7/27/2011)



**Very few application outages considering over 35 separate migration plans**

- PJM Operations
  - Transmission Operations/Generation Operations
    - ✓ Member ICCP Technical Support Required
    - ✓ Failover scheduled for 08:30 EPT
    - ✓ AC<sup>2</sup> ICCP link testing in July - August 2011
  - Planned Transmission Switching suspended between 0700 - 1100
- PJM Markets
  - eMKT unavailable from T-1 @ 20:00 to T @ 04:00 (4 to 8 hours)
    - ✓ Ancillary Service results will be manually communicated while eMKT is down
  - LMP for hours ending 09 – 12 posted next day

- Tool Unavailability (estimated unavailability intervals)
  - eDART (0630 to 18)
  - eData/eDataFeed (07 to 19)
  - SCED not available from 0830 to 1100
    - ✓ PJM to dispatch generation via AC2 ManEd
    - ✓ Less granular dispatch for transmission constraints
  - LRS (07 to 16)
  - GPM (07 to T+1 @ 16:00)
- PJM encourages members to start making the necessary adjustments to their internal automated processes

- External Systems:
  - NERC ISN
    - ✓ Data unavailable from 0810 to 0815
    - ✓ Periodic interruptions as C1 links switched to AC2 (0830 to 0930)
  - NERC SDX (0630 to 1800)
    - ✓ Supported manually by PJM Reliability Engineer while eDart is unavailable.
  - M2M
    - ✓ Unavailable from 0830 to 1030. PJM Reliability Engineer to utilize PJM/MISO Safe Operating Mode.

- August 29<sup>th</sup> WebEx, which includes additional plan details has been recorded:  
<http://www.pjm.com/markets-and-operations/ac2-program.aspx>
- During the cutover, PJM will be providing periodic updates to its members and external systems to update progress and/or communicate any issues experienced via direct voice communications, PJM All-Call, Web posting, major-domo e-mails, or the NERC RCIS.
- Consolidated Migration Plan SharePoint Website made available via WebEx for members/external systems to track progress.
- The PJM hotlines will be staffed during the cutover process (610-666-8980 or toll free at 866-400-8980).



Contact: Dave Souder  
[souder@pjm.com](mailto:souder@pjm.com)  
610-666-4795