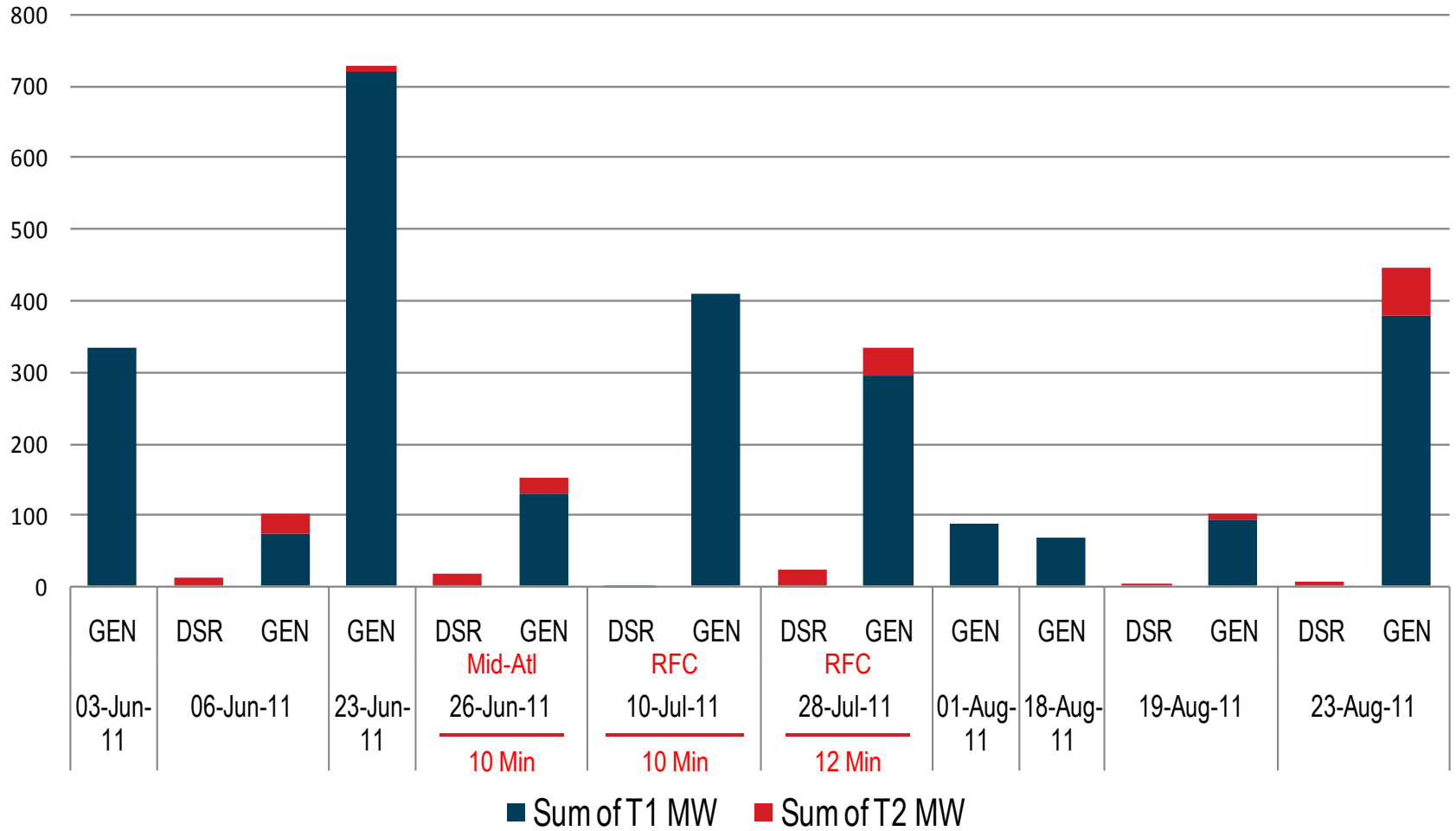


Synchronized Reserve Event Performance Summer 2011

Brad Gordon
Operating Committee Update
October 2011



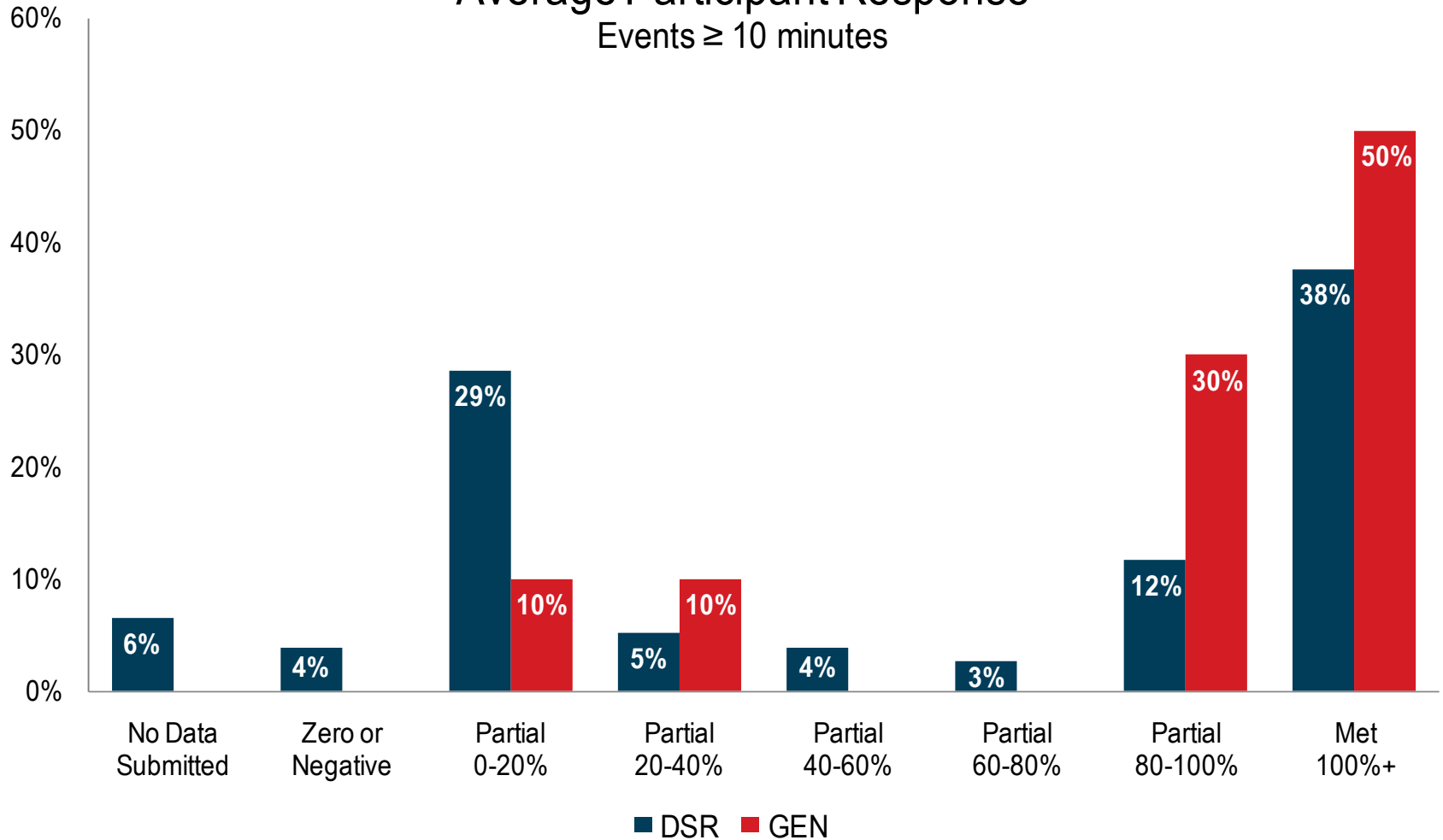
Total MW Response





Tier 2 Average Synchronized Response - Summer 2011

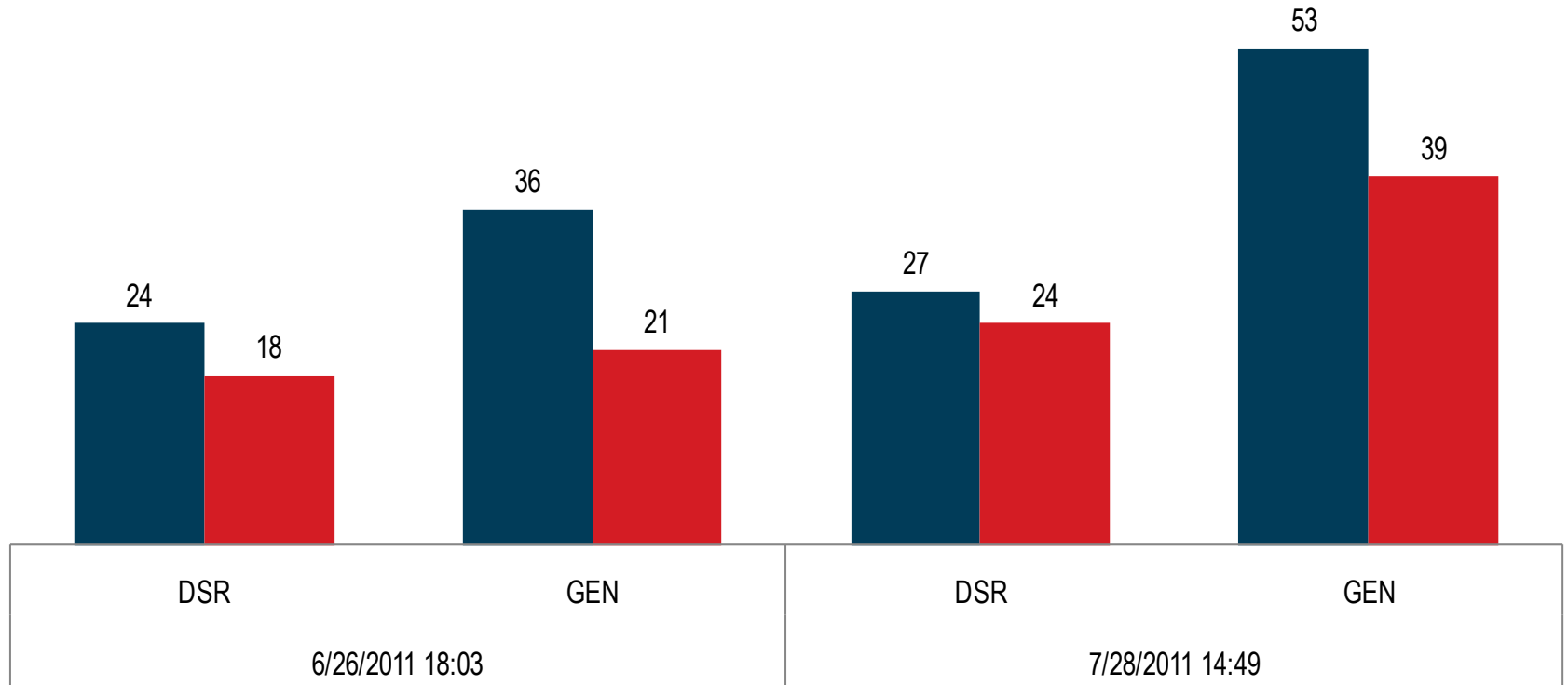
Average Participant Response Events ≥ 10 minutes





Tier 2 MW Response by Resource Type

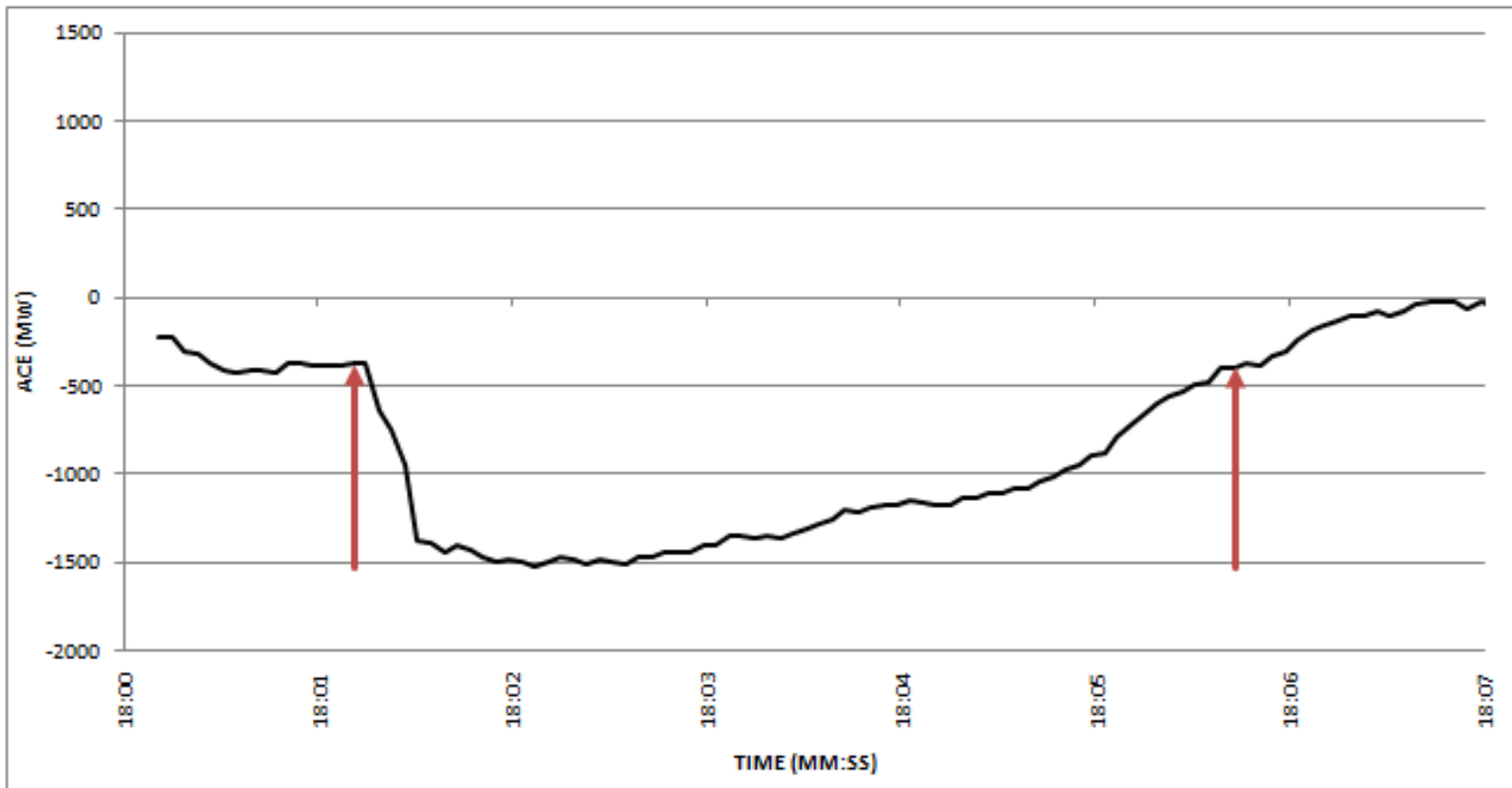
■ Sum of ASSIGNED_MWH ■ Sum of RESPONSE_MWH





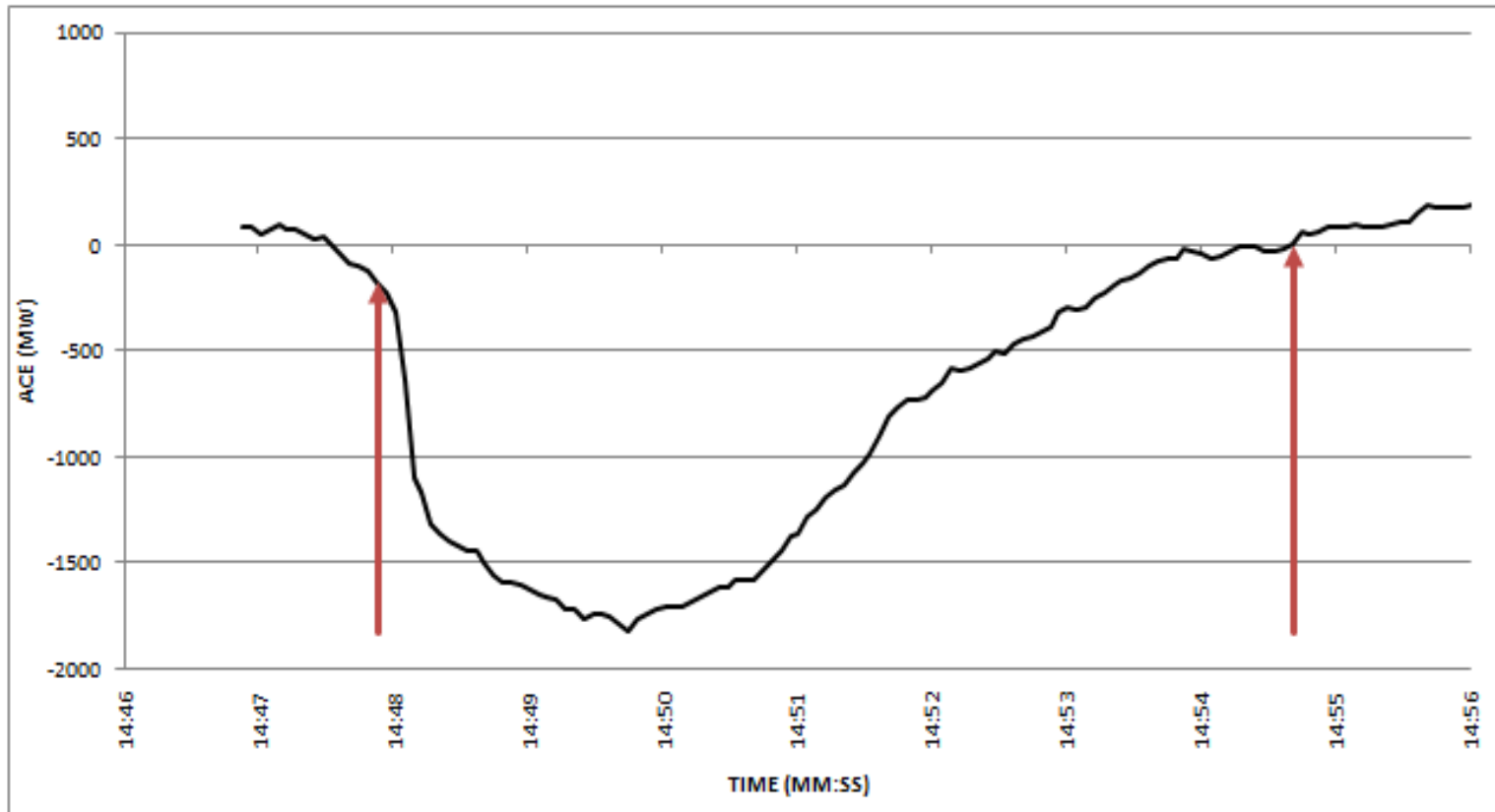
June 26th - Loss of 1212MW of Generation

Start Time:	06/26/2011 18:01:11	Start ACE:	-400 MW
Recovery Time:	06/26/2011 18:05:43	Minimum ACE:	-1523 MW
Duration:	→ 0:04:32	Recovery ACE:	-395 MW



Synch Reserves called in Mid-Atlantic from 18:03 to 18:13

Start Time:	07/28/2011 14:47:53	Start ACE:	-7 MW
Recovery Time:	07/28/2011 14:54:41	Minimum ACE:	-1824 MW
Duration:	→ 0:06:48	Recovery ACE:	1 MW



Synch Reserves called in RFC from 14:49 to 15:01

- June 26th – Loss of 1212MW Generation
 - DR Response – Received 18 of 24MW Tier 2
 - Gen Response – Received 21 of 36MW Tier 2
 - Frequency Response
 - Recovered ACE in 4min 32sec (Low of -1523MW)

- July 28th – Loss of 1250MW Generation
 - DR Response – Received 24 of 27MW Tier 2
 - Gen Response – Received 39 of 53MW Tier 2
 - Frequency Response
 - Recovered ACE in 6min 48sec (Low of -1824MW)