

# 2012 Day Ahead Scheduling Reserve Requirement

Performance Compliance

## **DASR Req. = LFE + FOR Components**

- Time Period Winter 2009 through Fall 2011

### Load Forecast Error (LFE) Component

- 3 year average of Under forecasted LFE

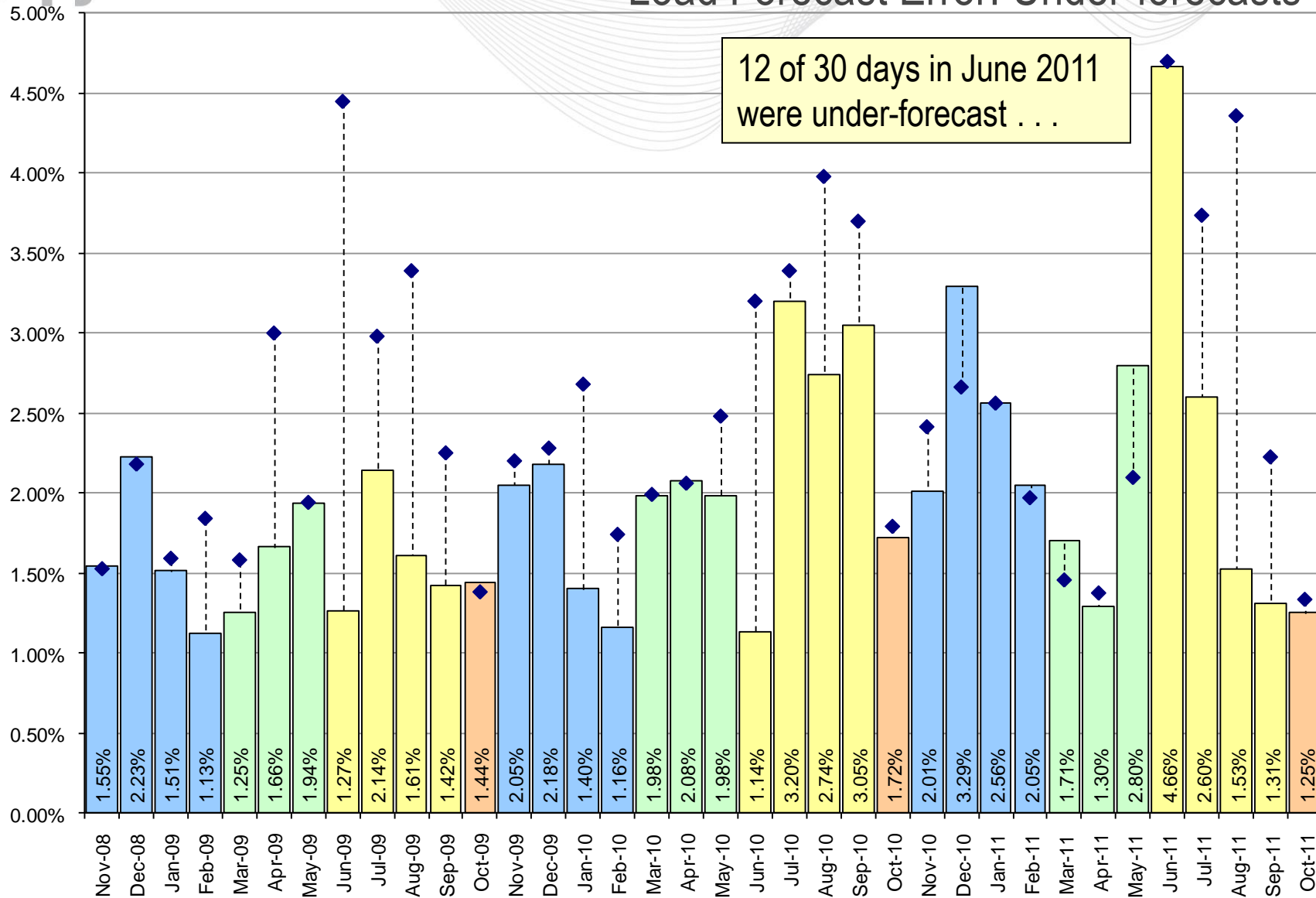
### Forced Outage Rate Component

- 3 year average of eDART Forced Outages, submitted after D-1 18:00, effective after D 8:00 ending before D 20:00

Season	Load Forecast Error Component 80th Percentile Absolute Error				Forced Outage Rate Component All Forced Outage Tickets				DA Sched.
	2009	2010	2011	Rollup	2009	2010	2011	Rollup	Req.
Winter	1.60%	1.70%	2.48%	1.93%	5.39%	5.78%	4.97%	5.38%	7.31%
Spring	1.62%	2.01%	1.93%	1.86%	5.58%	5.20%	5.66%	5.48%	7.34%
Summer	1.61%	2.53%	2.53%	2.22%	4.92%	4.58%	4.71%	4.74%	6.96%
Fall	1.44%	1.72%	1.25%	1.47%	4.84%	3.85%	5.21%	4.63%	6.10%
Annual				1.97%				5.06%	7.03%

- 2011 LFE component is 1.97% (up 0.10%)
- 2011 FOR component is 5.06% (down 0.17%)
- Total 2011 DASR Requirement is 7.03%

# Load Forecast Error: Under-forecasts



80th Percentile of Underforecast Error
  80th Percentile of Absolute Error

- 2011 DASR Requirement was 7.11%, propose 7.03%
  - Added ATSI effective 6/1/2011 (Summer 2011)
- Small increase in Load Forecast Error component
- Small decrease in Forced Outage Rate component
- Review in November, Approval in December, Implement in January