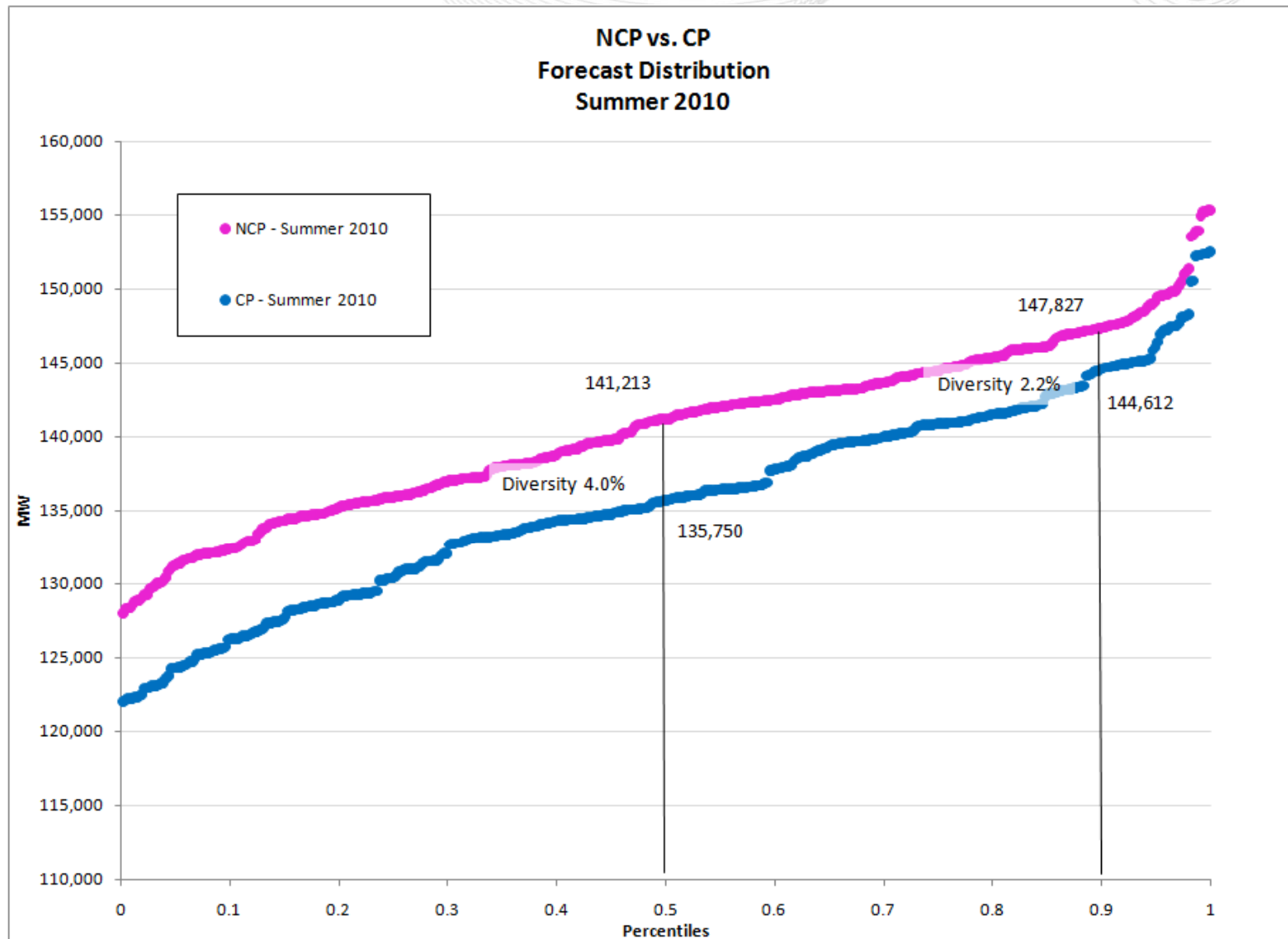


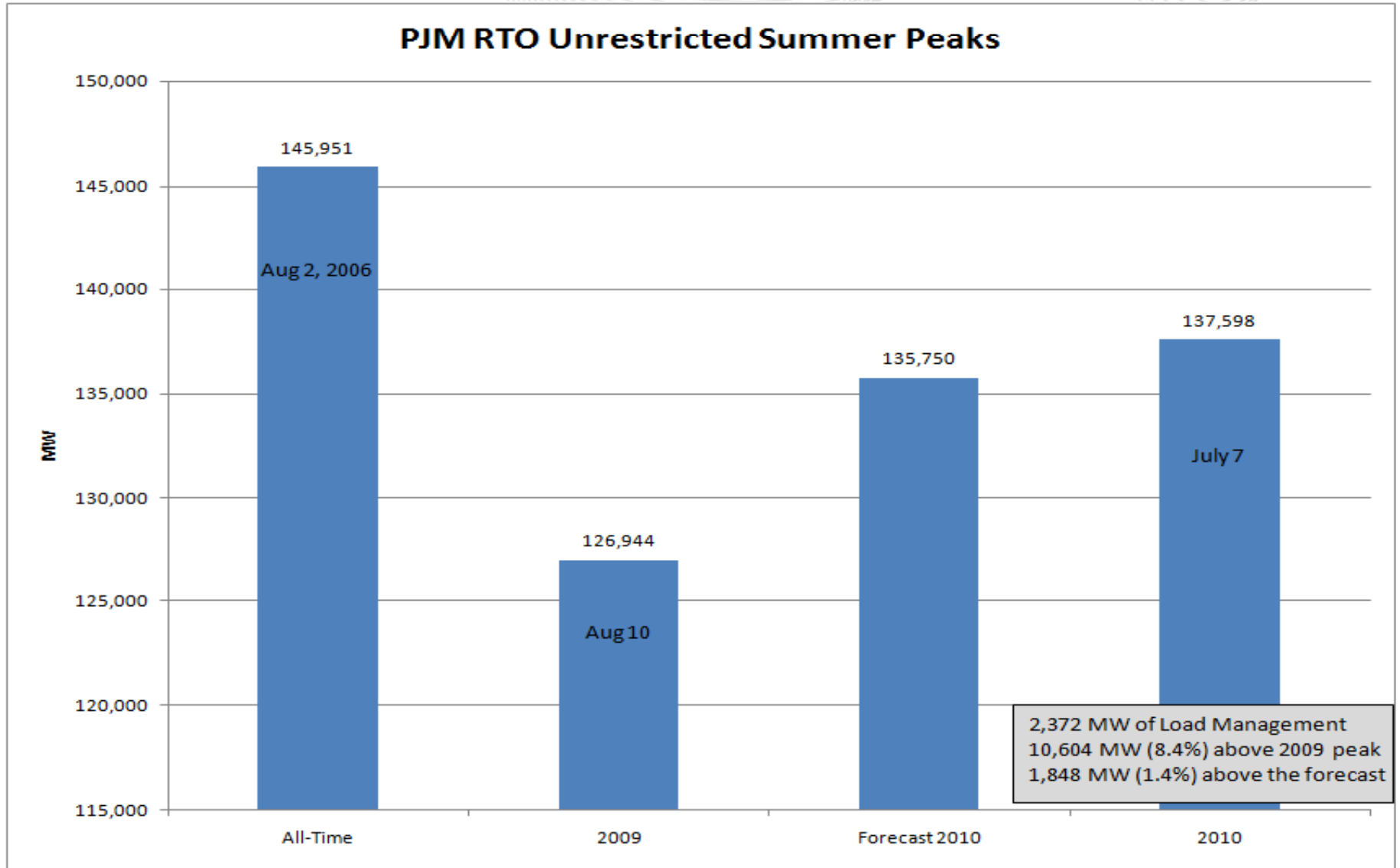


A Review of PJM RTO Summer 2010 Loads

Planning Committee
November 10, 2010
John Reynolds



PJM RTO Unrestricted Summer Peaks



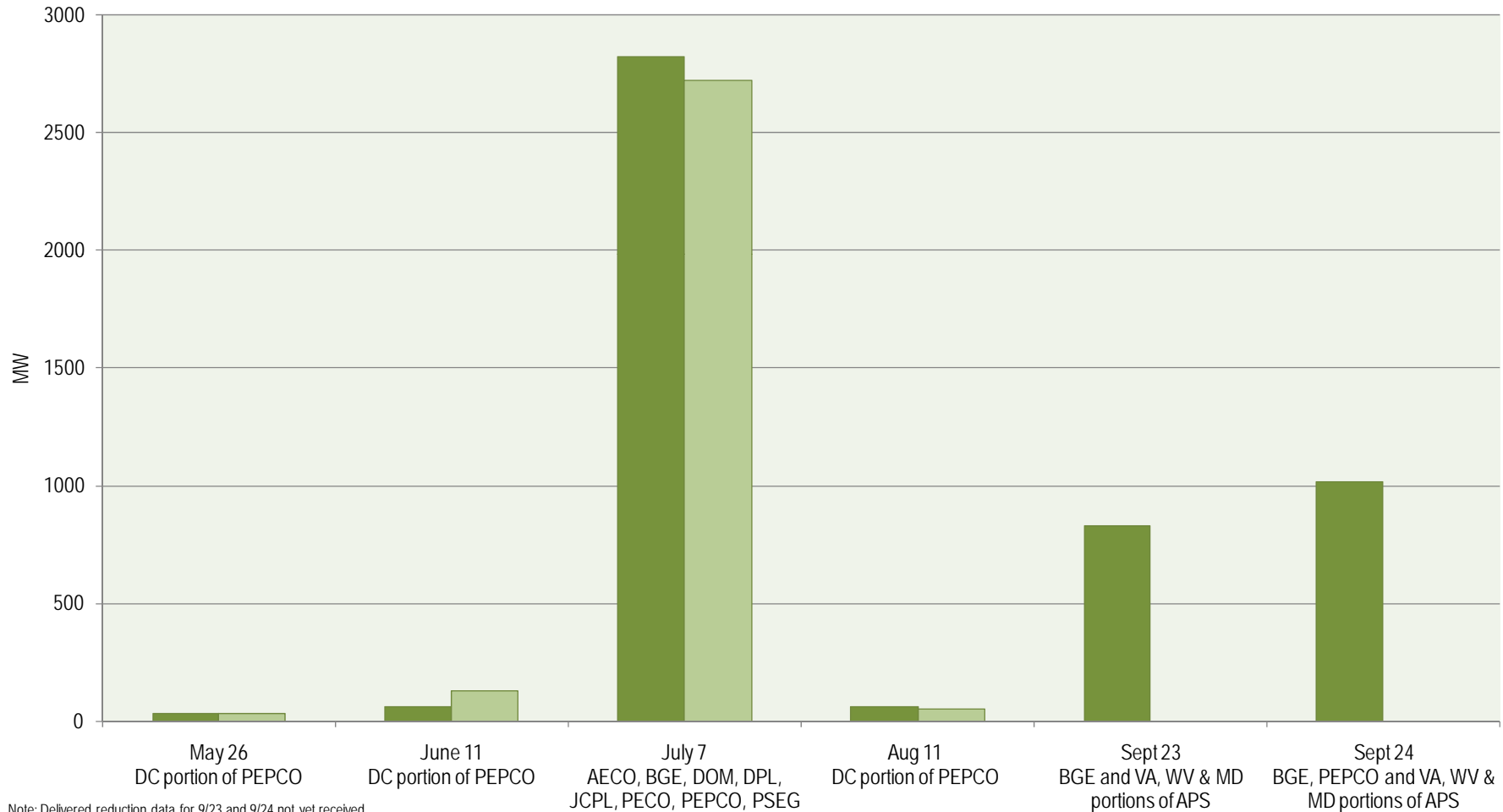
	DATE	Temperature	Humidity	Heat Index
AE	7/7/2010	91.0	52.0	97.5
AEP	7/7/2010	93.5	30.6	92.5
APS	7/7/2010	92.1	34.7	92.2
BGE	7/7/2010	101.0	30.0	104.1
COMED	7/7/2010	92.0	42.0	94.6
DAYTON	7/7/2010	91.0	40.0	92.2
DPL	7/7/2010	97.4	33.4	99.0
DQE	7/7/2010	90.0	35.0	89.2
JCPL	7/7/2010	91.8	54.3	100.5
METED	7/7/2010	99.5	28.0	100.3
PECO	7/7/2010	101.0	24.0	100.6
PENLC	7/7/2010	92.5	41.5	94.5
PEPCO	7/7/2010	101.0	28.0	102.8
PL	7/7/2010	98.0	30.0	99.0
PS	7/7/2010	92.0	55.0	101.4
RECO	7/7/2010	92.0	55.0	101.4
UGI	7/7/2010	94.0	34.0	94.5
VEPCO	7/7/2010	98.3	34.0	101.5
PJM RTO**	7/7/2010	95.2	36.5	97.5

** The PJM RTO weather parameters are for reference only and are estimated from weighted zonal contributions to the annual RTO peak.

Emergency Load Management Events - 2010

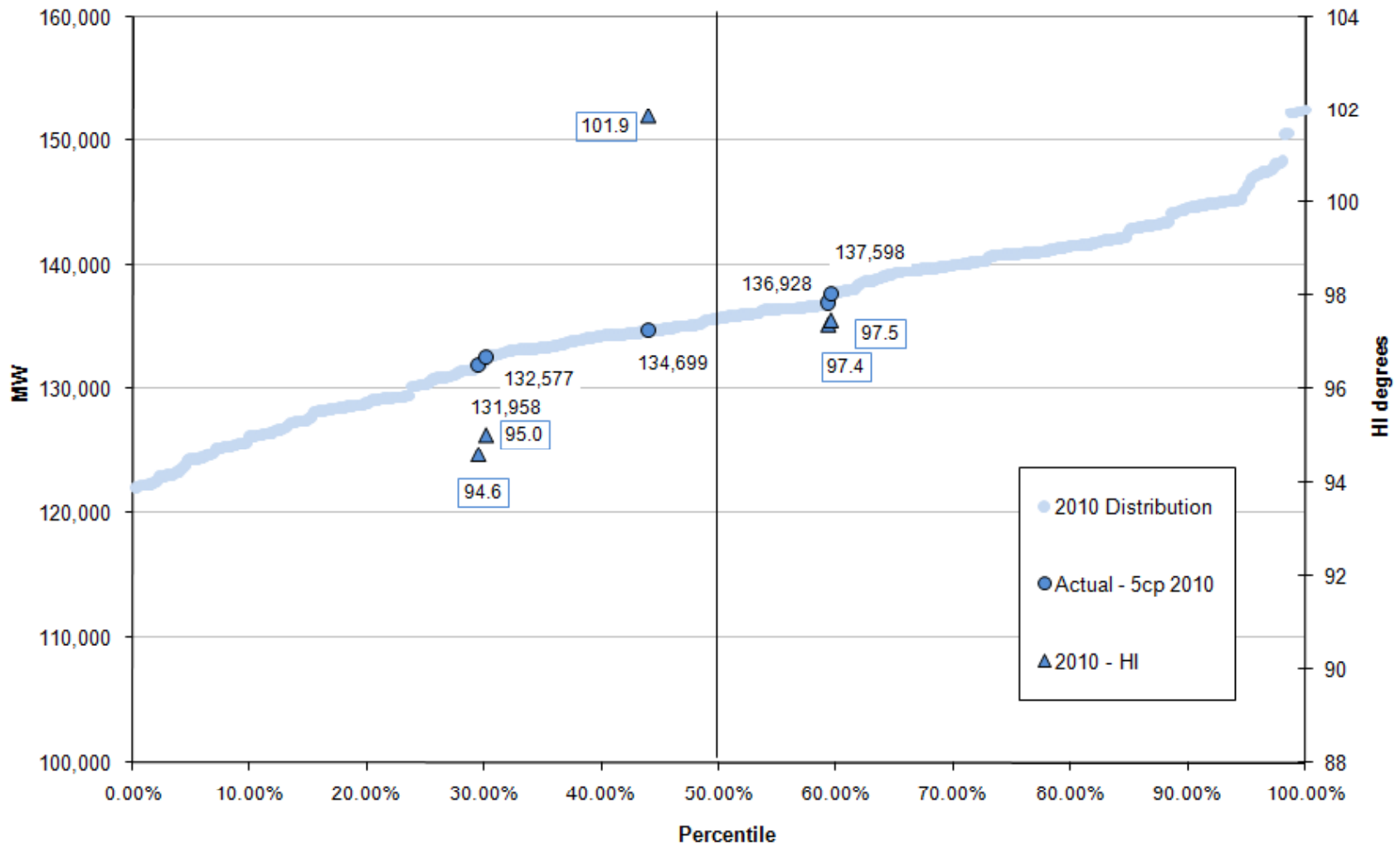
Demand Resources and Interruptible Load for Reliability
[updated 10/22/2010]

■ Expected Load Reductions ■ Actual delivered load reductions

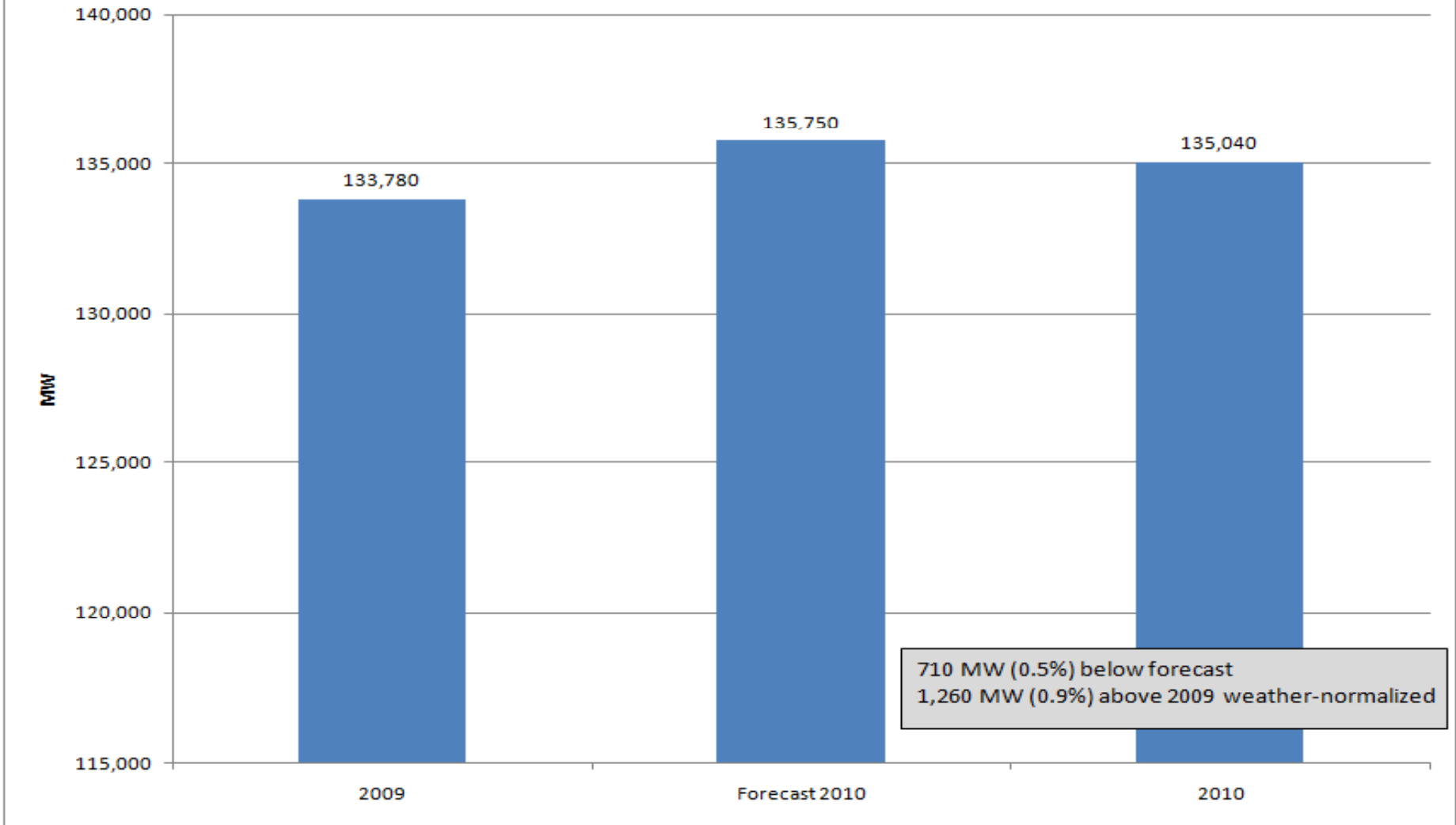


Note: Delivered reduction data for 9/23 and 9/24 not yet received.

**2010 Forecast Distribution
5 CPs with Corresponding Heat Index Values**



PJM RTO Weather Normalized Summer Peaks



- Weather normalized peak resumed growth, but remains below 2008 level. Slow economic recovery hampered load growth.
- Weather: Hottest summer on record for most PJM areas, but peak day weather not as extreme as 2006. Resulted in very high usage (GWh).
- Active year for Load Management: 5 events (6 if May 26 included), mostly for local reliability (especially PEPCO). Most events in more than 10 years.
- Peak diversity for 2010 was 2.25%, lower than the forecasted 3.87% but in line with warmer than normal conditions.



Summer 2010 Coincident Peaks (5CP)

PJM RTO

<u>Day</u>	<u>Date</u>	<u>Hour</u>	<u>MW</u>
Wednesday	7/7/2010	17:00	137,598
Tuesday	7/6/2010	17:00	136,928
Friday	7/23/2010	17:00	134,699
Tuesday	8/10/2010	17:00	132,577
Wednesday	8/11/2010	17:00	131,958

Note: All times are listed in hour ending EPT