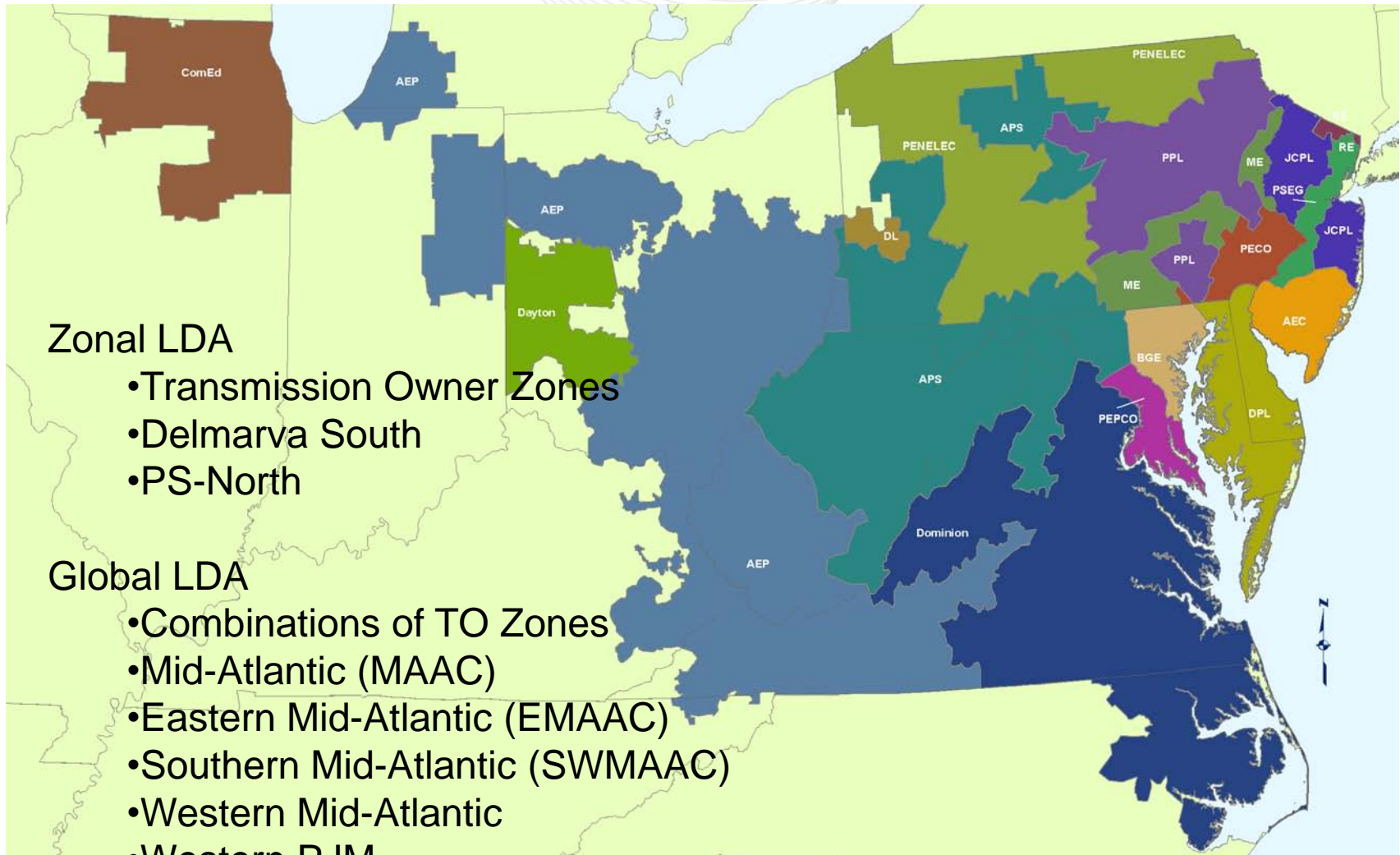


LDA Discussion

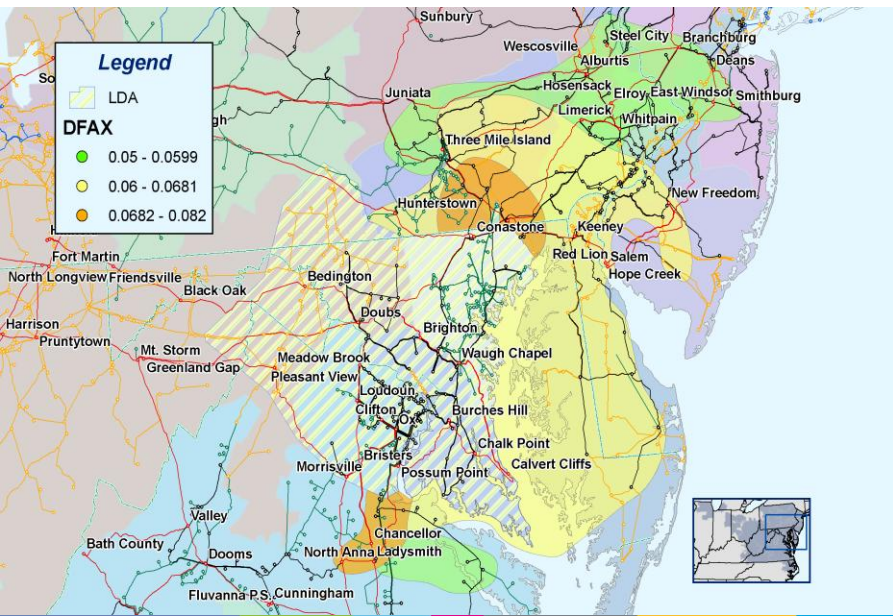
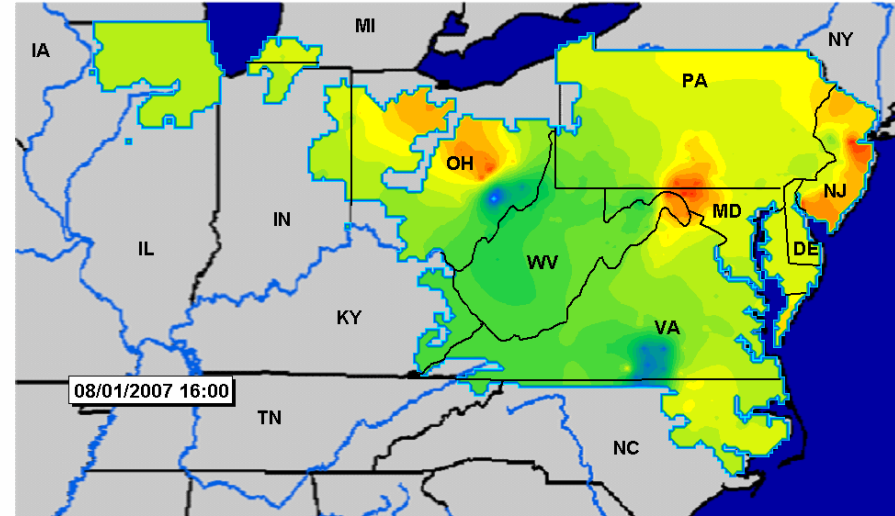
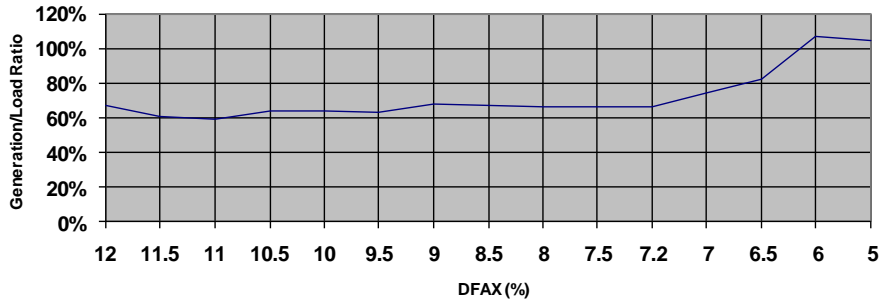
Paul McGlynn
Planning Committee
December 8, 2010



D-fax Methods

LMP Methods

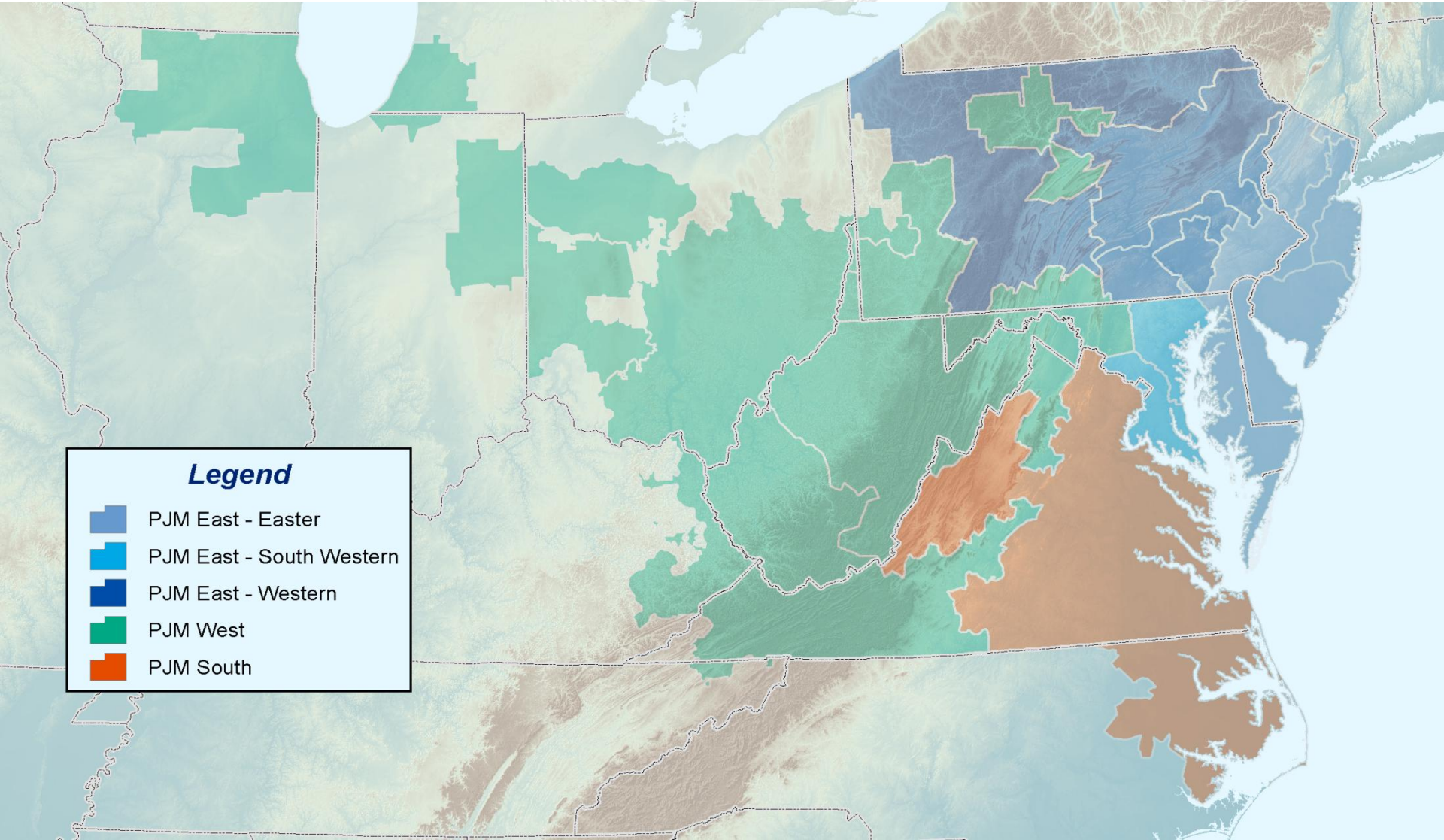
Mt. Storm - Doubs 500 kV



Iterative Algebraic Method:

$(\text{Load} - \text{Generation})$
 (“Strength of Tie-Lines”)

- Previous efforts to develop analytic methods to identify a new LDA have not resulted in any new LDAs being developed
 - D-fax methods to identify busses contributing to the loading on a facility
 - How to group the busses (i.e. determining a d-fax cutoff)
- PJM is not going to pursue d-fax methods to form new LDA
- Two outstanding requests
 - Global vs Zonal LDA
 - APS pocket in MAAC



Legend

-  PJM East - Eastern
-  PJM East - South Western
-  PJM East - Western
-  PJM West
-  PJM South

