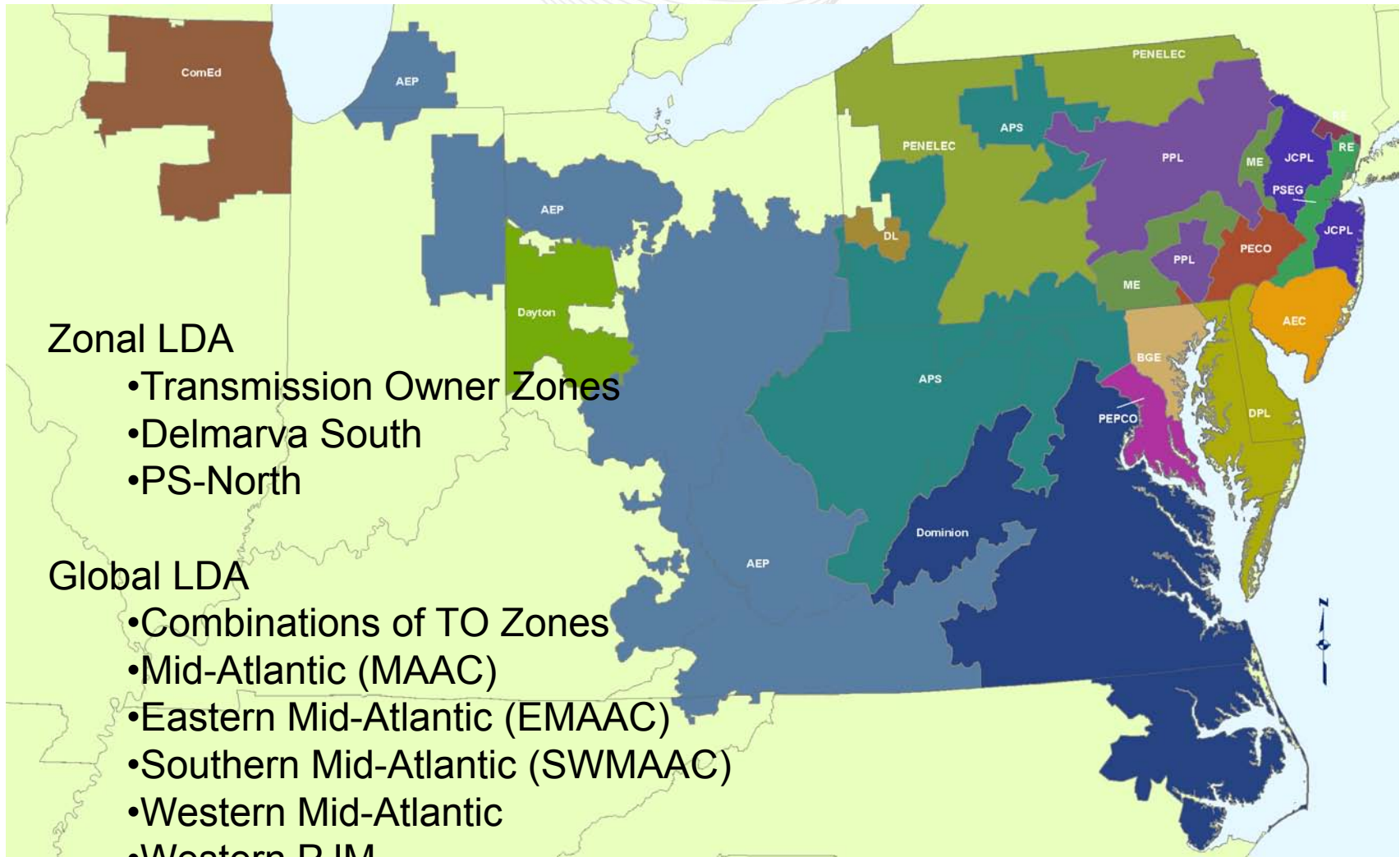
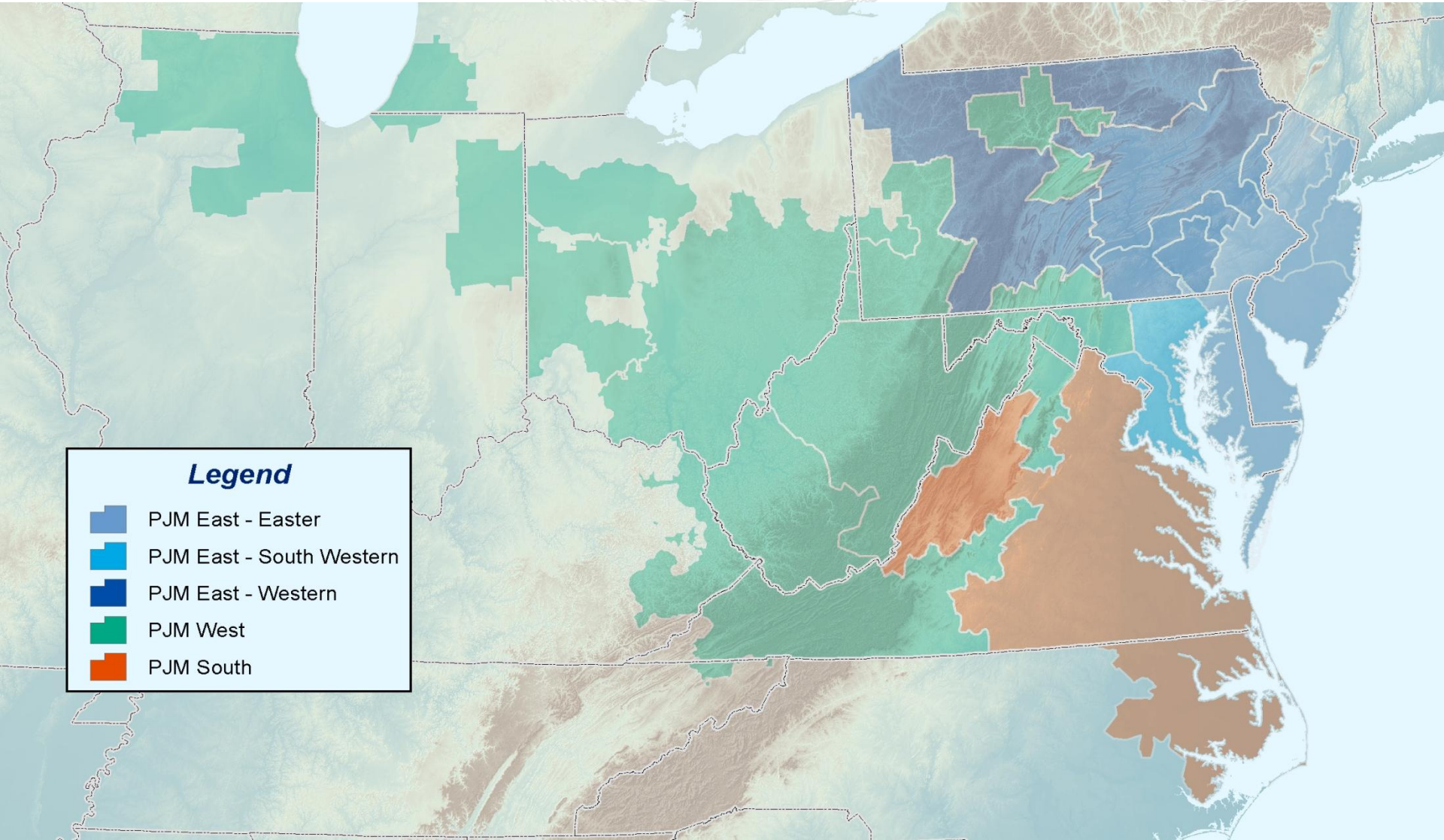


# LDA Analytic Issues




Paul McGlynn  
Planning Committee  
June 9, 2011

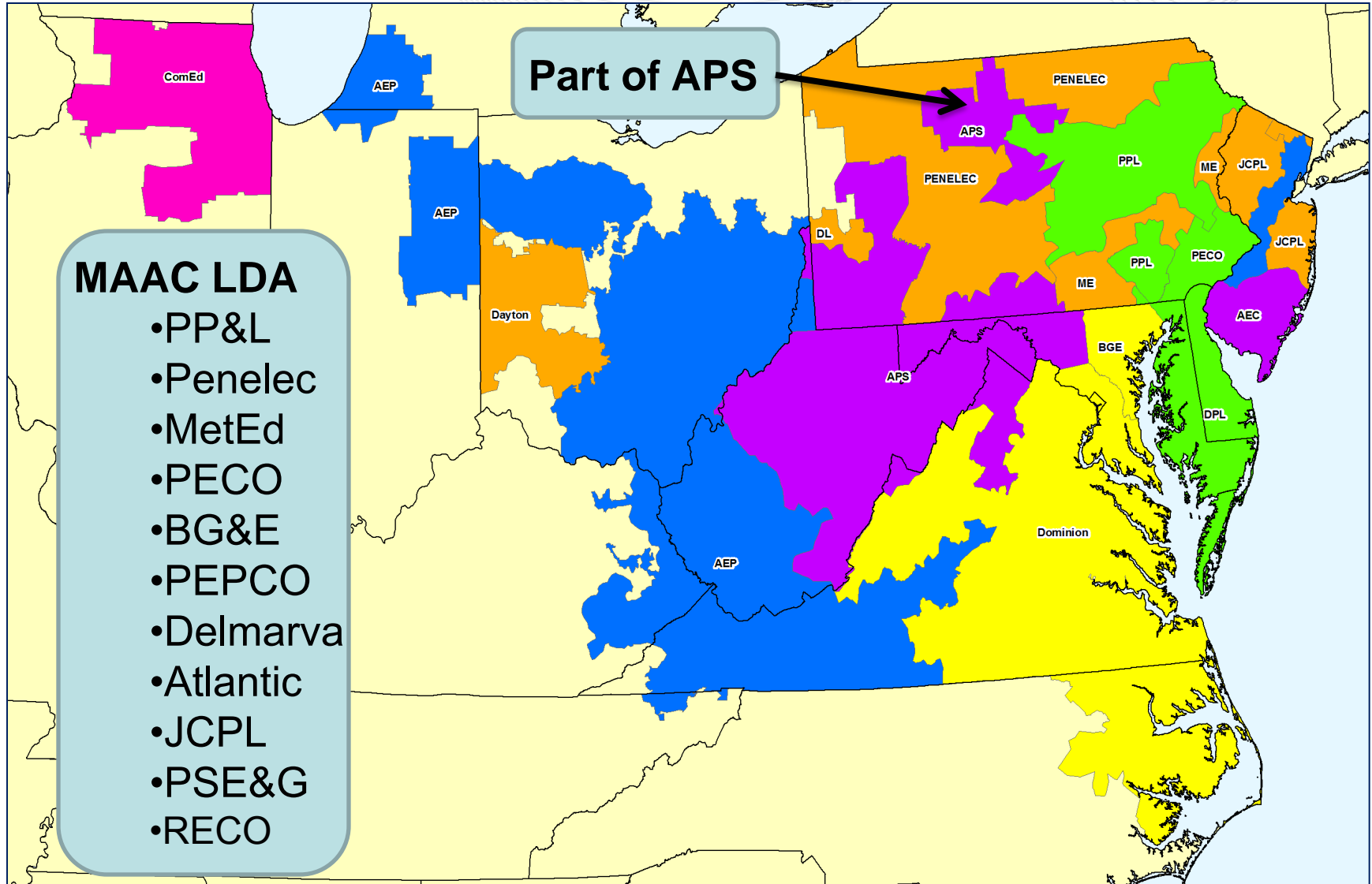
- At the January PC meeting we discussed our previous efforts to develop analytic methods to define new LDAs
- It was noted that we would not pursue analytic methods to develop new LDAs but that we would evaluate new LDAs based on stakeholder input
- Three requests related to LDAs
  - Global vs Zonal LDA
  - APS pocket in MAAC
  - Cleveland Interface



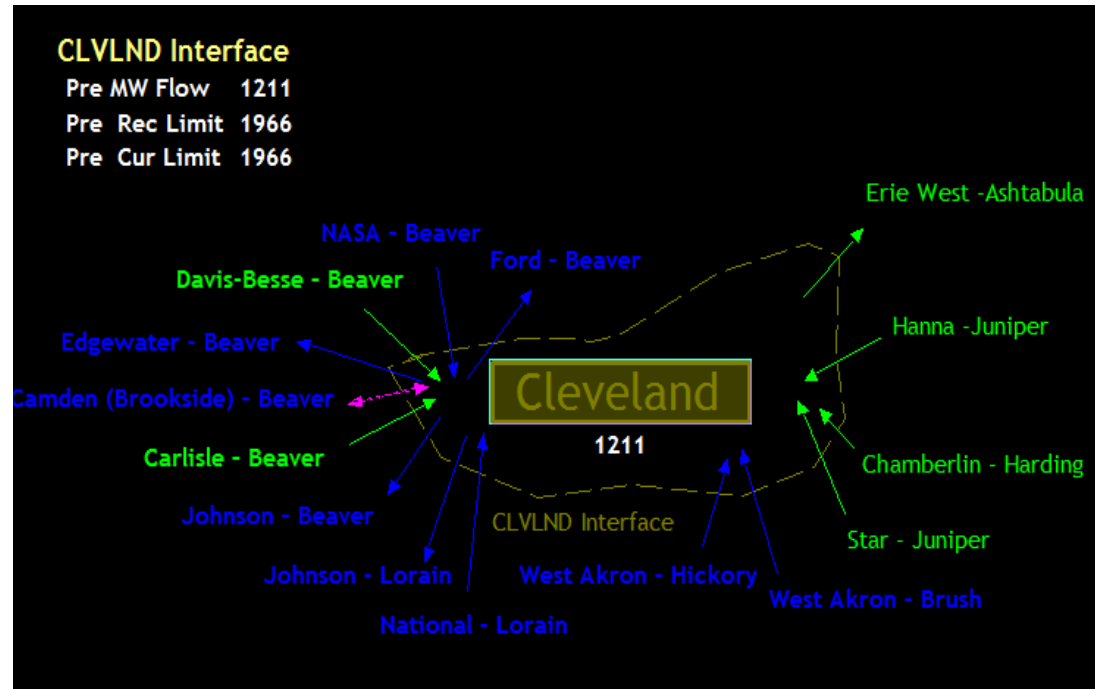


**Legend**

-  PJM East - Eastern
-  PJM East - South Western
-  PJM East - Western
-  PJM West
-  PJM South



- Reactive Interface used in Operation
- Made up of the following lines
  - Chamberland – Harding 345 kV
  - Hanna – Juniper 345 kV
  - Star – Juniper 345 kV
  - Davis Besse – Beaver 345 kV
  - Carlisle – Beaver Valley 345 kV
  - Erie West – Ashtabula 345 kV
  - Ford – Beaver 138 kV
  - NASA – Beaver 138 kV
  - Camden – Beaver 138 kV
  - Johnson – Beaver 138 kV
  - West Akron – Hickory 138 kV
  - West Akron – Brush 138 kV
  - Johnson – Beaver 138 kV
  - Edgewater – Beaver 138 kV
  - Johnson – Loraine 138 kV
  - National – Loraine 138 kV



- Should the PC form a new task force to define a scope of analysis to evaluate the three potential LDAs?
  - Global versus Zonal?
  - APS Pocket in MAAC?
  - Cleveland Interface?
- First step would be to draft the task force charge
- The task force would report back to the PC
- Next steps would be determined based on the recommendations of the task force