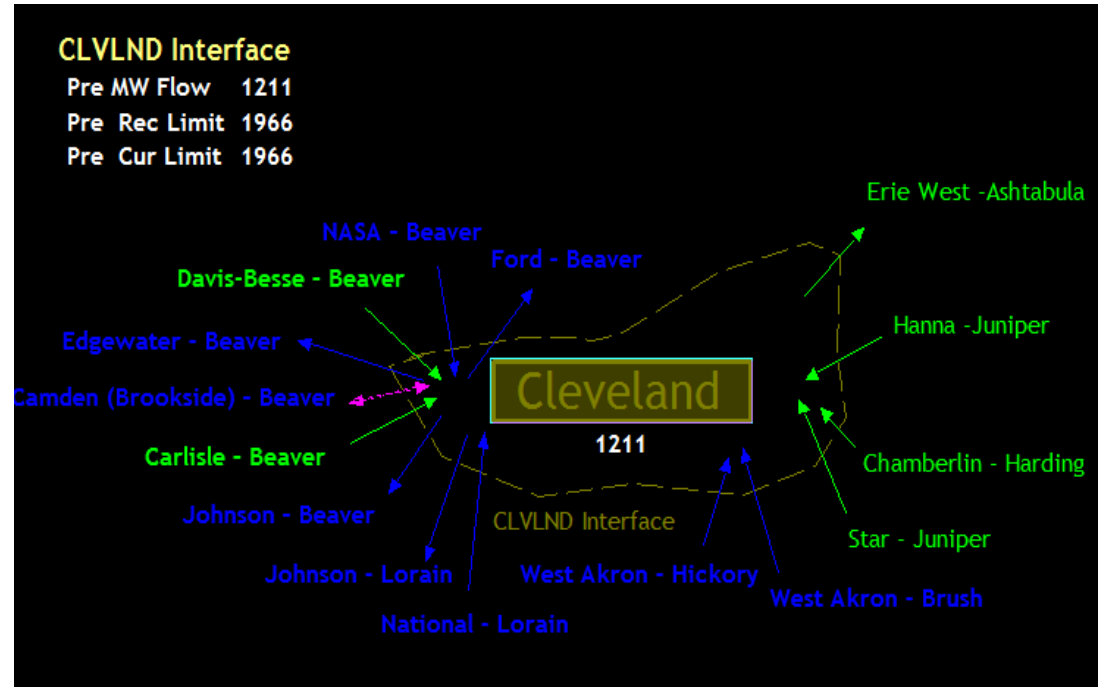


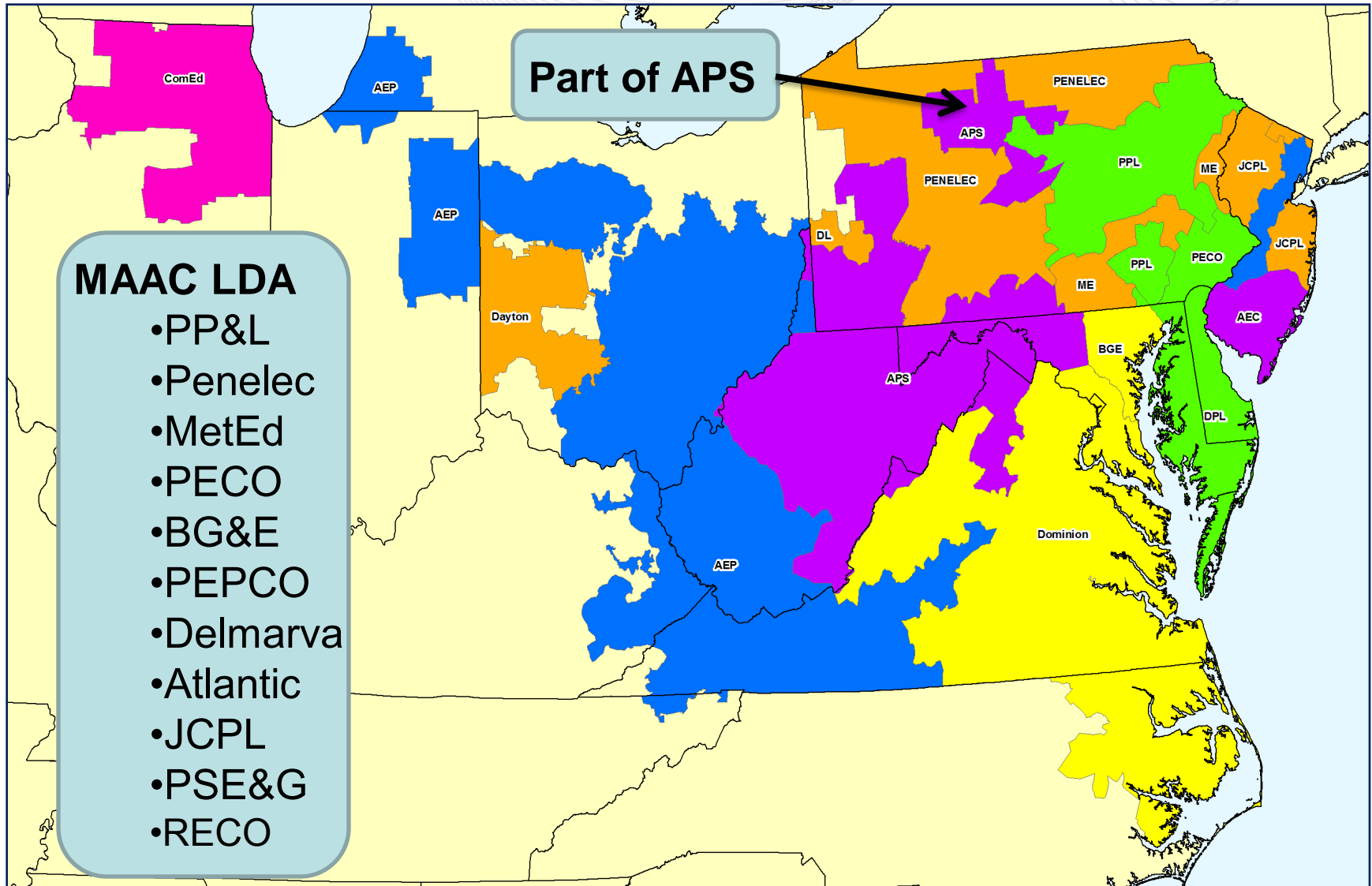
LDA Analytic Issues

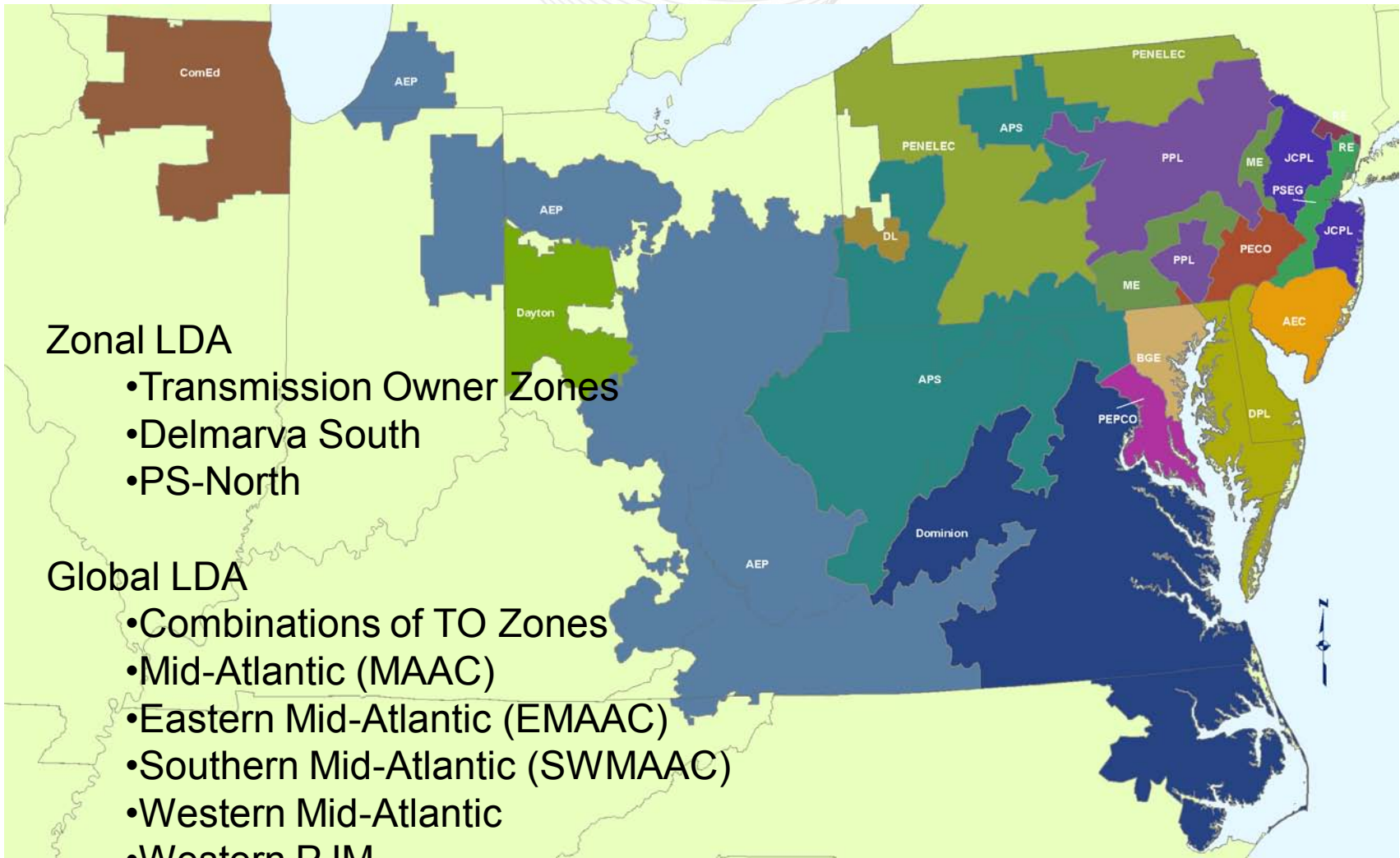
Paul McGlynn
Planning Committee
July 7, 2011

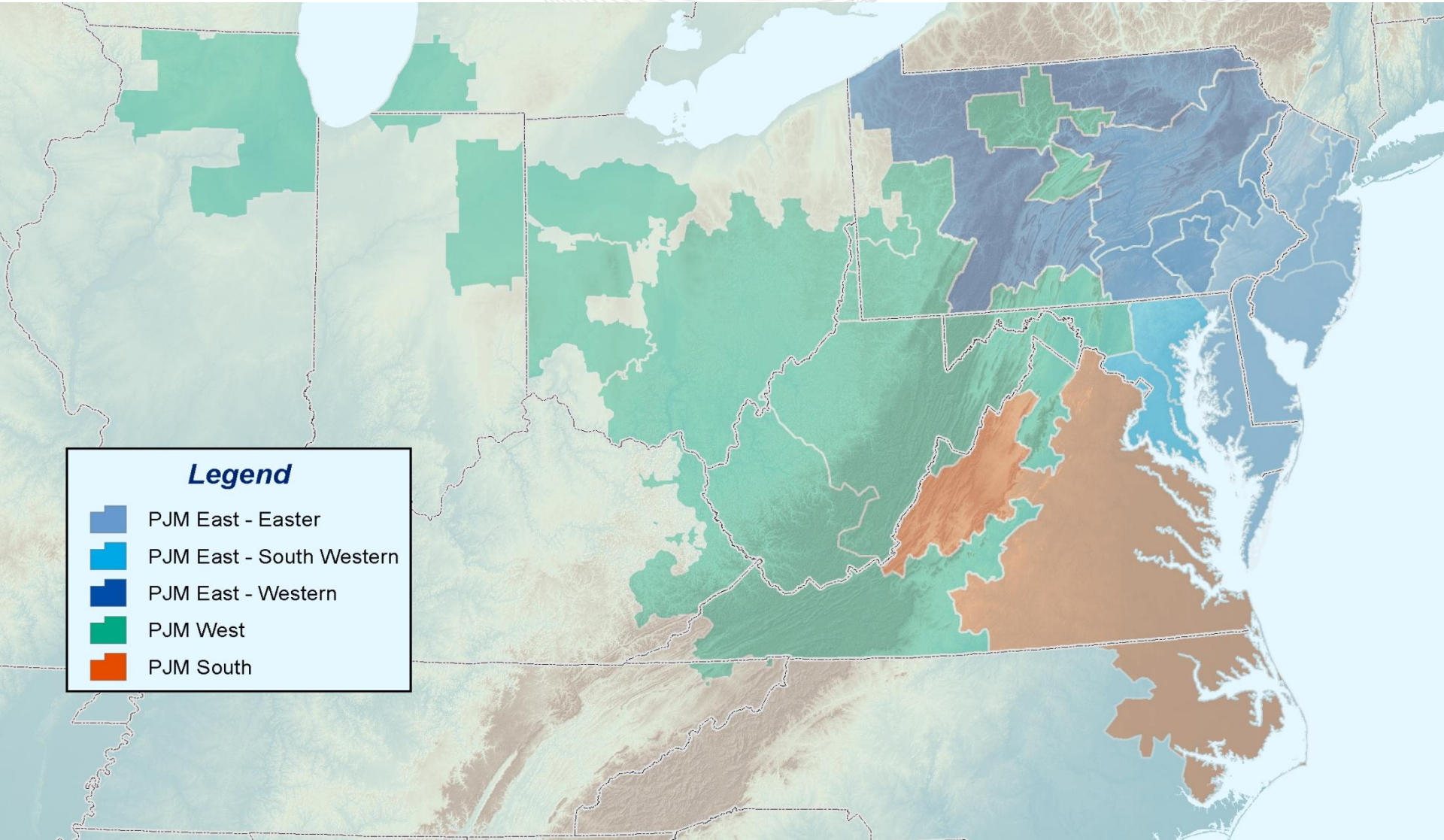
- At the June PC meeting we discussed three requests related to possible new LDAs
 - Global vs. Zonal LDA
 - APS pocket in MAAC
 - Cleveland Interface
- It was suggested that we develop a charge to develop a scope of analysis to evaluate the three potential LDAs

- Reactive Interface used in PJM Operations
- Cleveland interface definition:
 - Chamberlin – Harding 345 kV
 - Hanna – Juniper 345 kV
 - Star – Juniper 345 kV
 - Davis Besse – Beaver 345 kV
 - Carlisle – Beaver Valley 345 kV
 - Erie West – Ashtabula 345 kV
 - Ford – Beaver 138 kV
 - NASA – Beaver 138 kV
 - Camden – Beaver 138 kV
 - West Akron – Hickory 138 kV
 - West Akron – Brush 138 kV
 - Johnson – Beaver 138 kV
 - Edgewater – Beaver 138 kV
 - Johnson – Loraine 138 kV
 - National – Loraine 138 kV




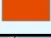


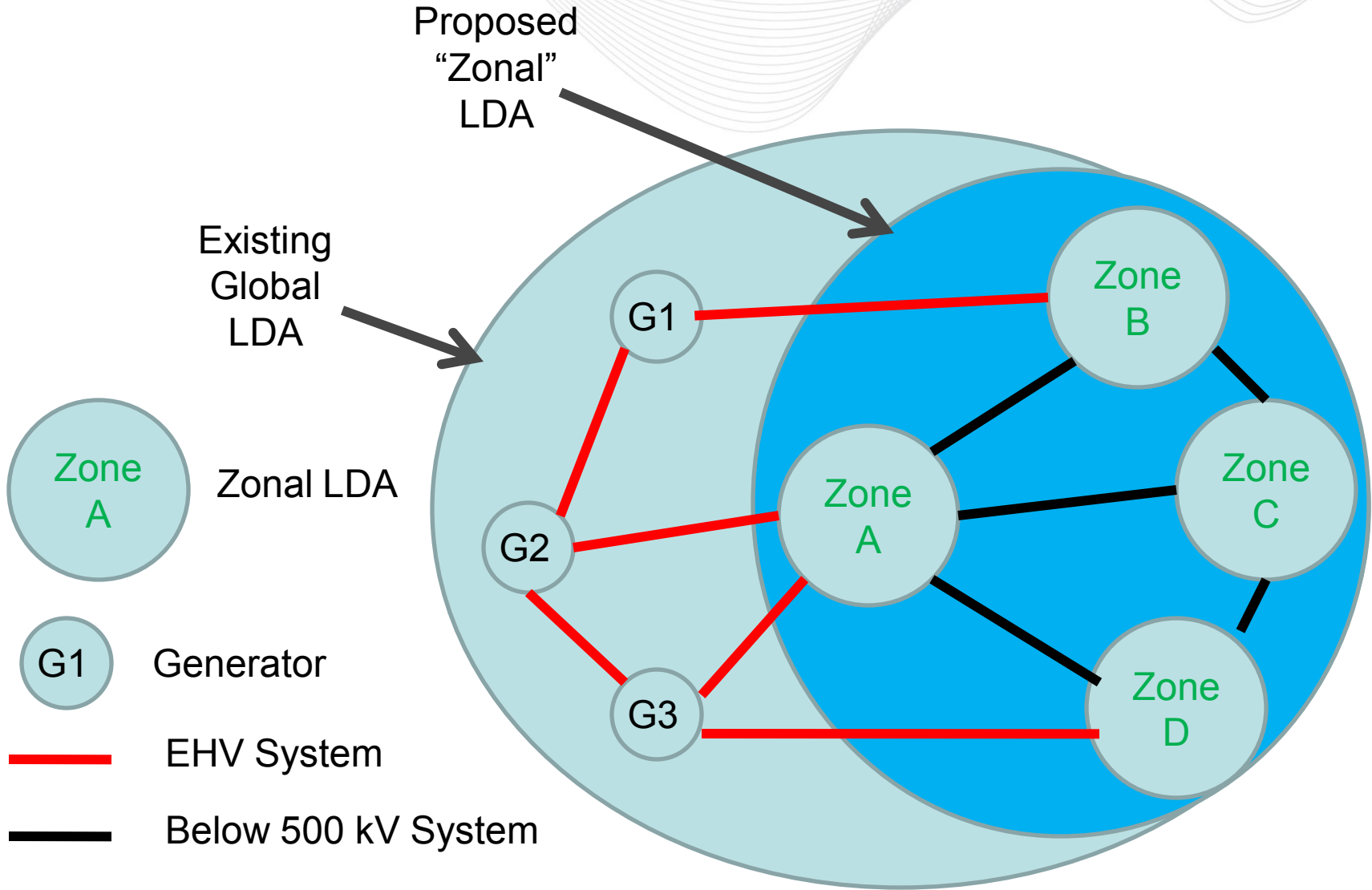






Legend

-  PJM East - Easter
-  PJM East - South Western
-  PJM East - Western
-  PJM West
-  PJM South



- Develop an analytic scope of work to evaluate each proposed LDA
 - Cleveland Area LDA
 - Modify MAAC to include a portion of APS
 - Global vs. Zonal

- Develop scope of work to compare proposed LDA with new LDA to evaluate the extent to which the new LDA would identify transmission adequacy issues that would not otherwise be identified in a timely manner.

- The charge will be assigned to the PC