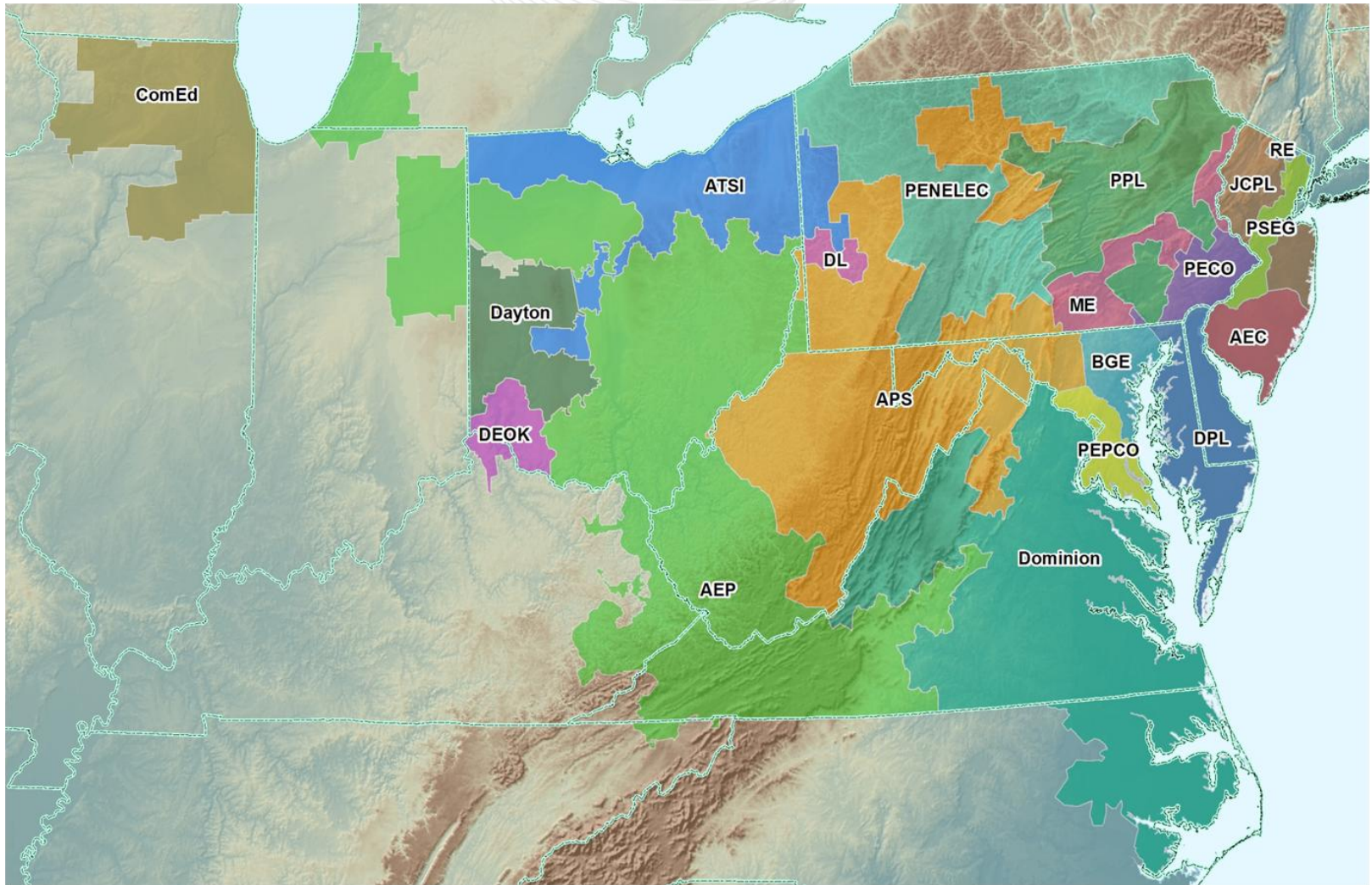




# 2011 IRM Study Preliminary Results

Planning Committee  
September 8, 2011



**2011 Base Case IRM (2015/16 DY) => 15.4 %**

**2010 Base Case IRM (2014/15 DY) => 15.3 %**

Why are results so similar?

- Identical historical time period used for the load models (1998-2006)
- PJM 5 year rolling EFORD is very similar to last year's
- PJM/World load diversity is very similar and therefore Capacity Benefit of Ties (1.8%) is identical to last year's

2010 Base Case IRM (2014 DY)	=>	15.3%
Impact of Load Model changes	=>	0.07 %
Impact of Capacity Model changes	=>	-0.02 %
Impact of World Reserve changes	=>	0.05 %

Estimated IRM due to impacts => 15.4 %

**2011 Base Case IRM (2015 DY) => 15.4 %**

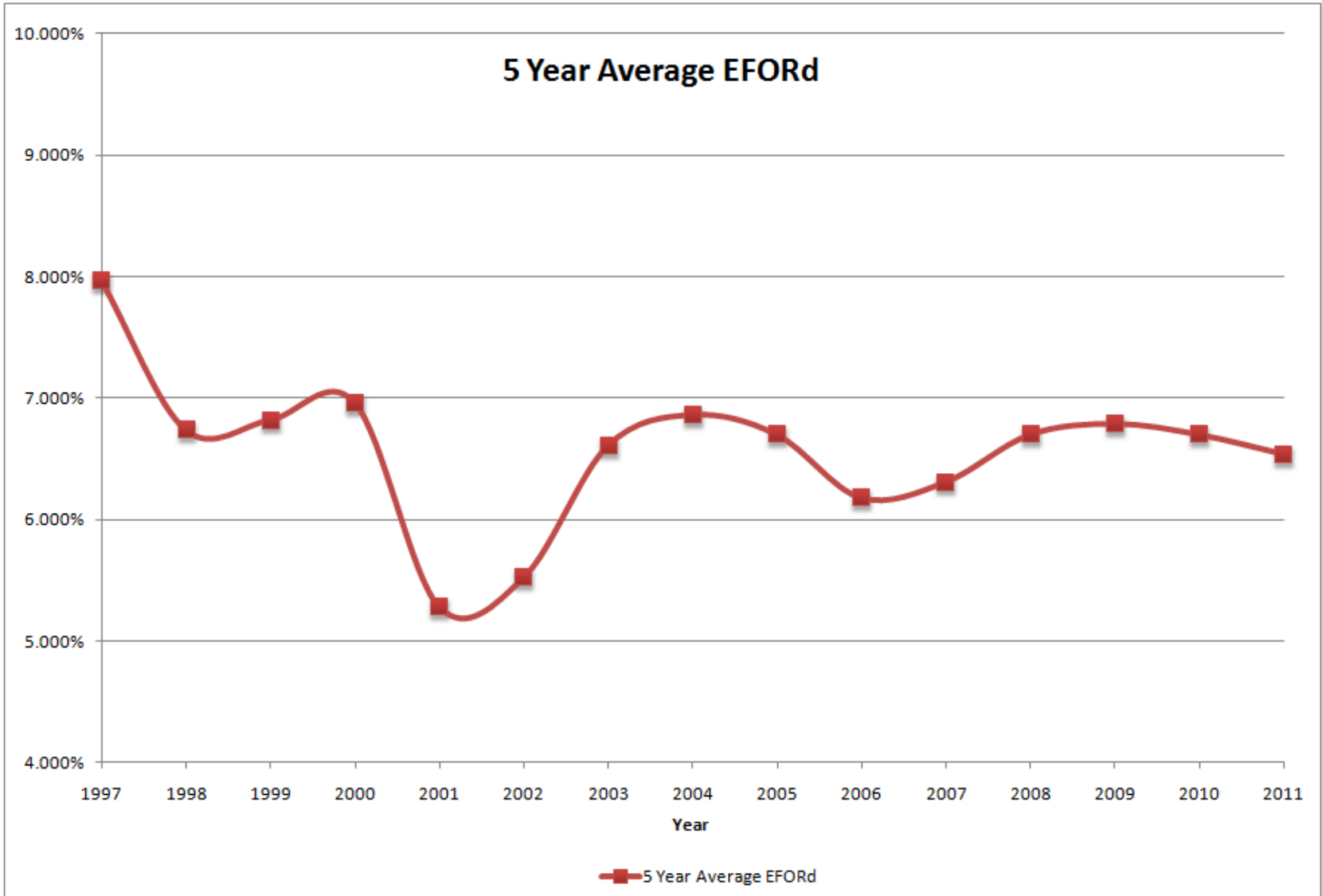
RRS Year	Delivery Year Period	Calculated IRM	Recommended IRM	Avg. EFORd *	Recommended FPR	Recommended DR Factor
2011	2012 / 2013	15.775%	<b>15.8%</b>	5.98%	<b>1.0888</b>	<b>0.953</b>
2011	2013 / 2014	15.446%	<b>15.4%</b>	5.90%	<b>1.0859</b>	<b>0.955</b>
2011	2014 / 2015	15.441%	<b>15.4%</b>	5.89%	<b>1.086</b>	<b>0.955</b>
2011	2015 / 2016	15.391%	<b>15.4%</b>	5.90%	<b>1.0859</b>	<b>0.955</b>

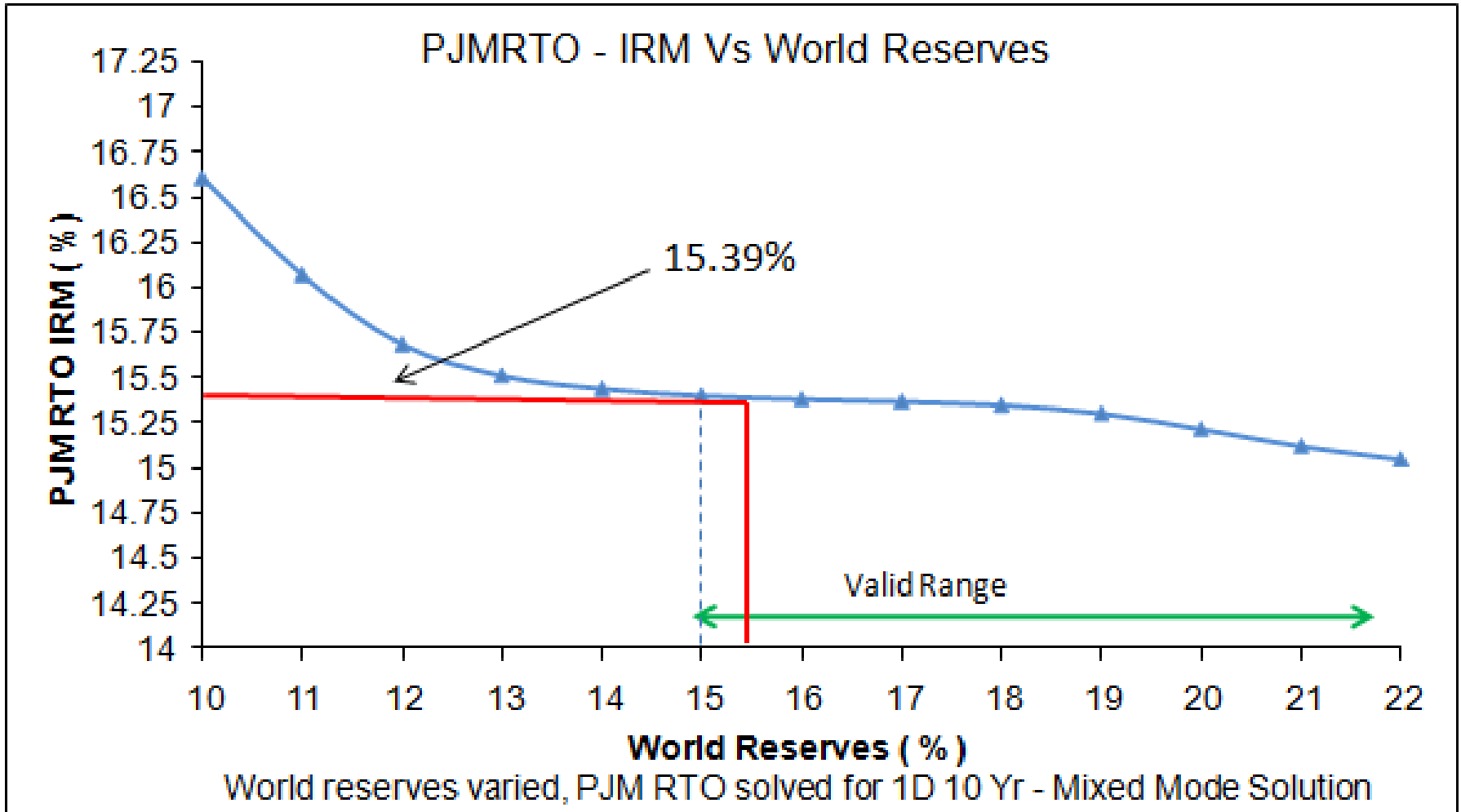
Note: Avg. EFORd does not include Outside Management Control generator outage events.  
 Units have full five year reporting for OMC events, via eGADS.

\* EFORd = Equivalent Demand Forced Outage Rate (See Part II, page 22)

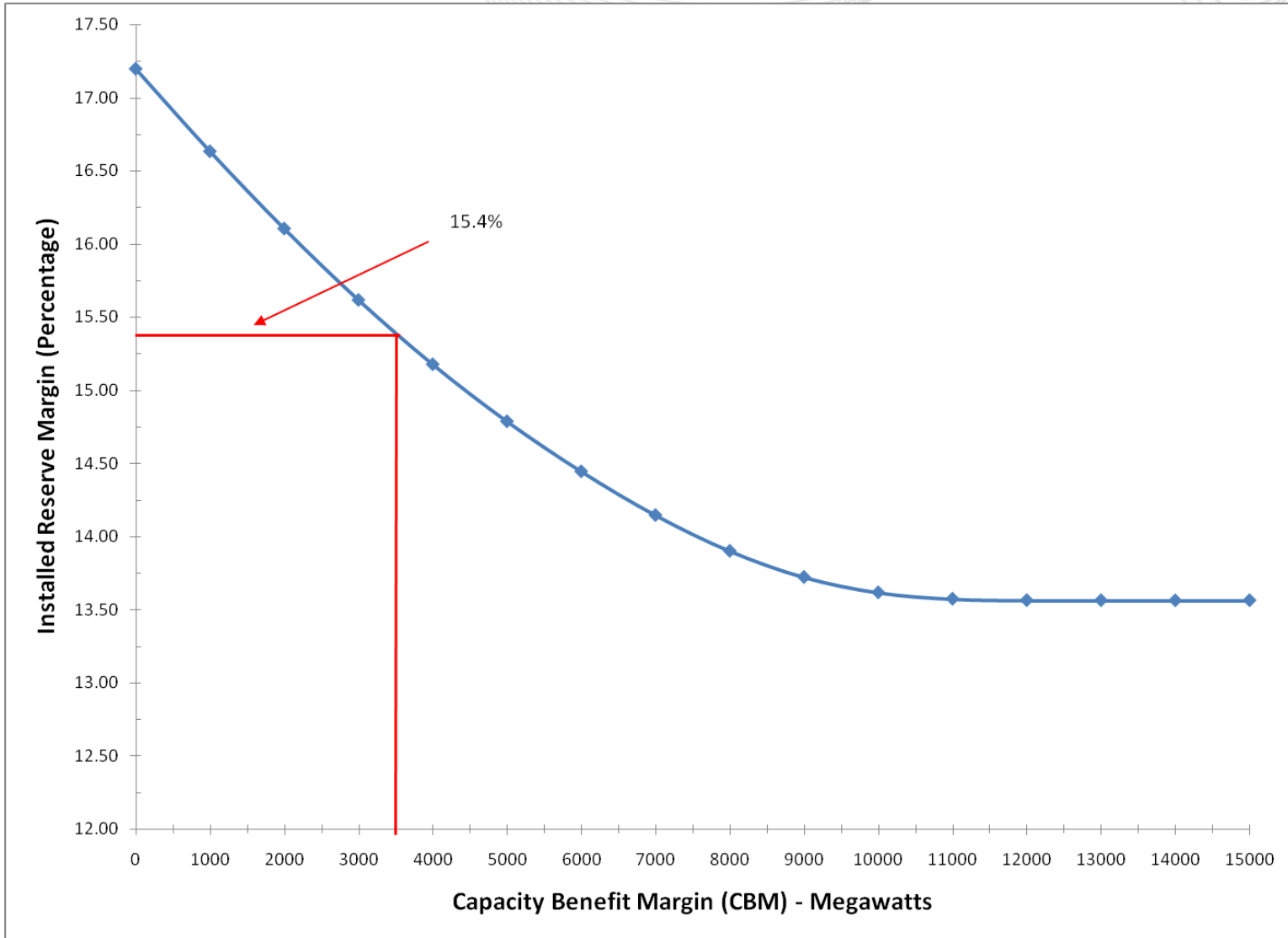
- The results from the 2010 RRS Study are below:

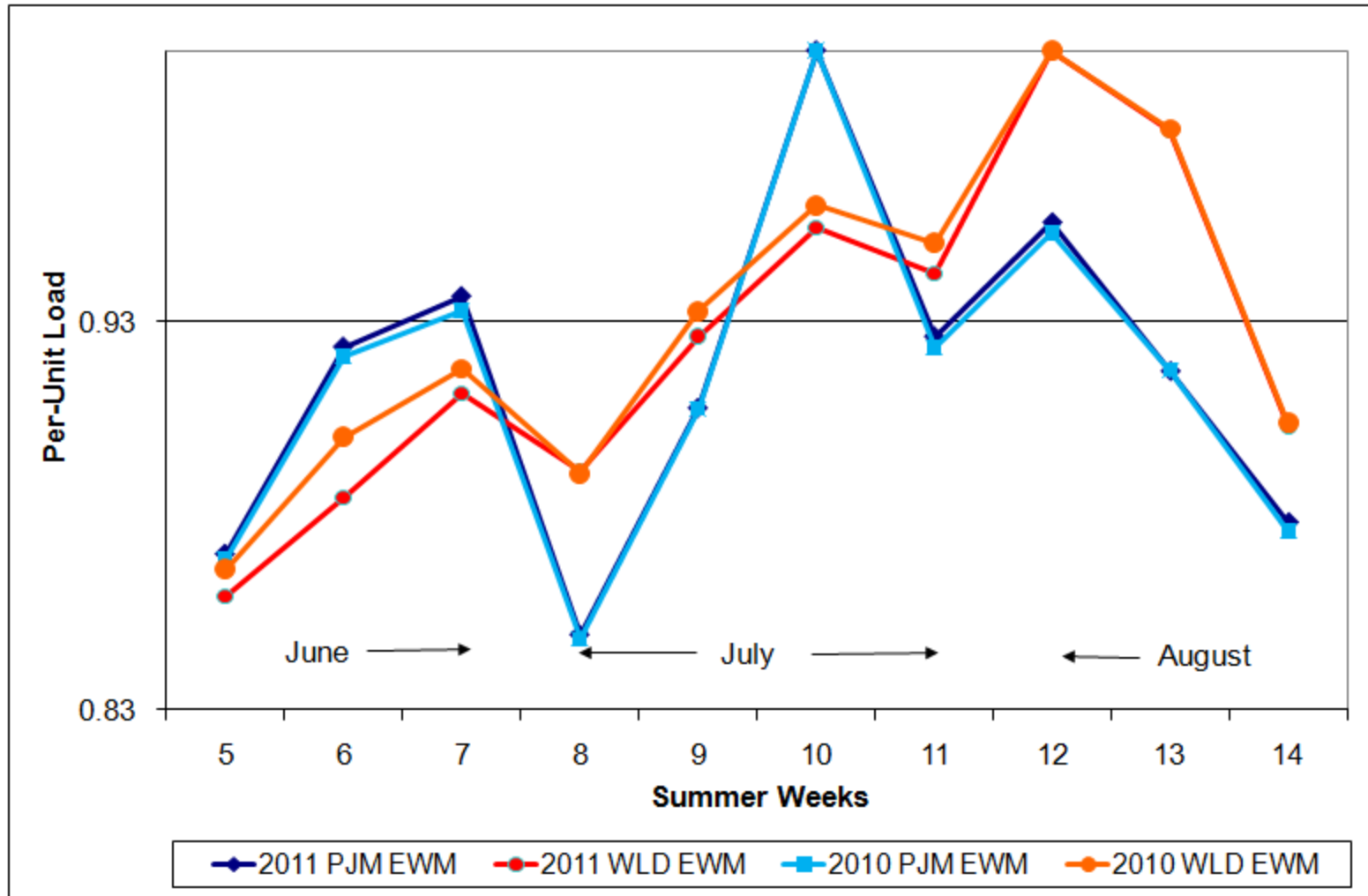
RRS Year	Delivery Year Period	Calculated IRM	Recommended IRM	Avg. EFORd *	Recommended FPR	Recommended DR Factor
2010	2012 / 2013	15.48%	<b>15.5%</b>	6.26%	<b>1.0827</b>	<b>0.954</b>
2010	2013 / 2014	15.34%	<b>15.3%</b>	6.25%	<b>1.0809</b>	<b>0.956</b>
2010	2014 / 2015	15.33%	<b>15.3%</b>	6.25%	<b>1.0809</b>	<b>0.956</b>

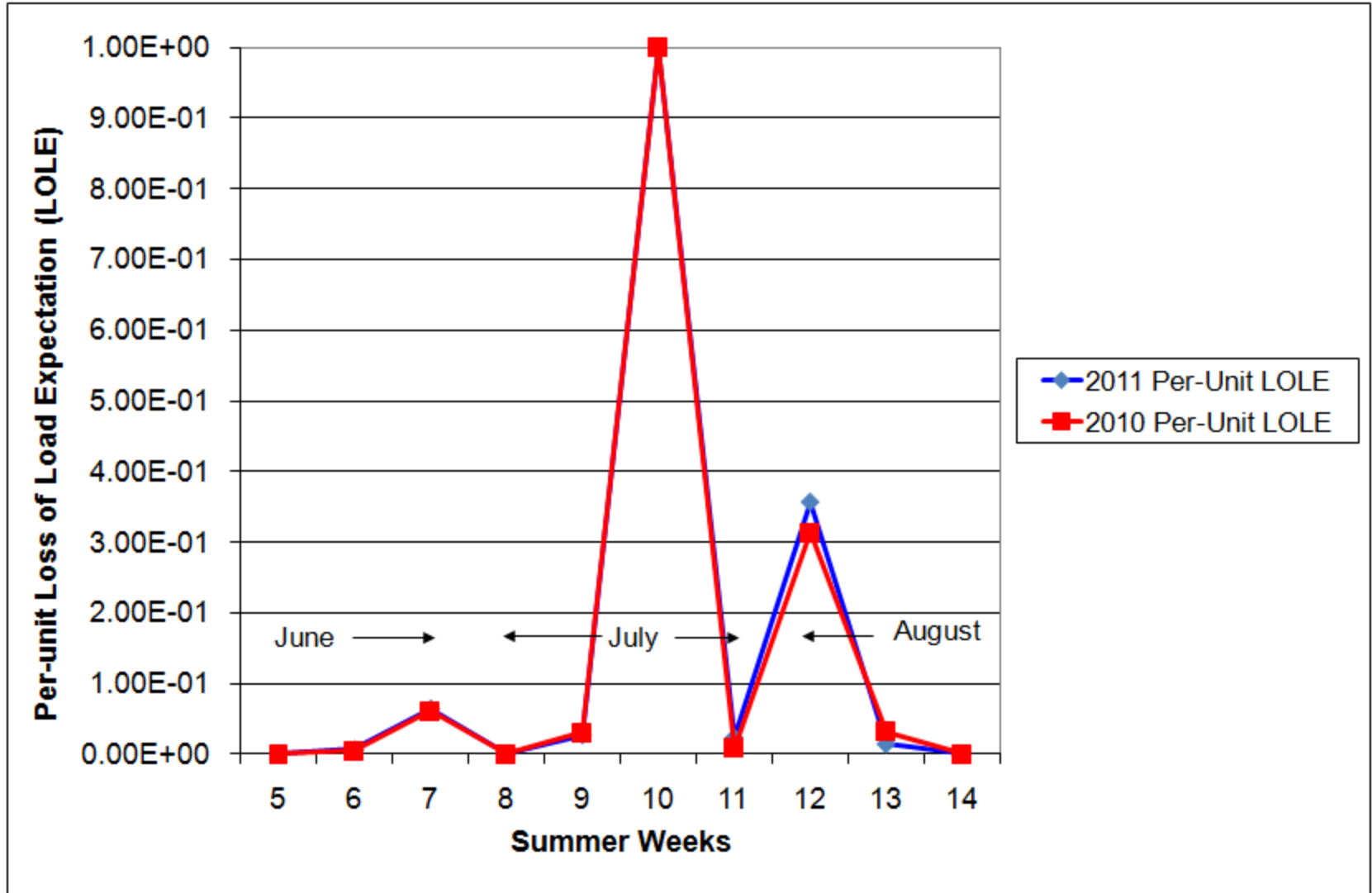




World reserves varied, PJM RTO solved for 1D 10 Yr - Mixed Mode Solution







- RAAS meeting on September 29
  - Review IRM Study Report and develop recommendation to PC
- PC meeting on October 5
  - Review IRM Study Report and vote on recommendation to MRC
- October – November
  - Review and recommendation at MRC and MC
- December - January 2012
  - PJM Board approval of IRM, FPR and DR Factor for 2012/13, 2013/14, 2014/15 and 2015/16