

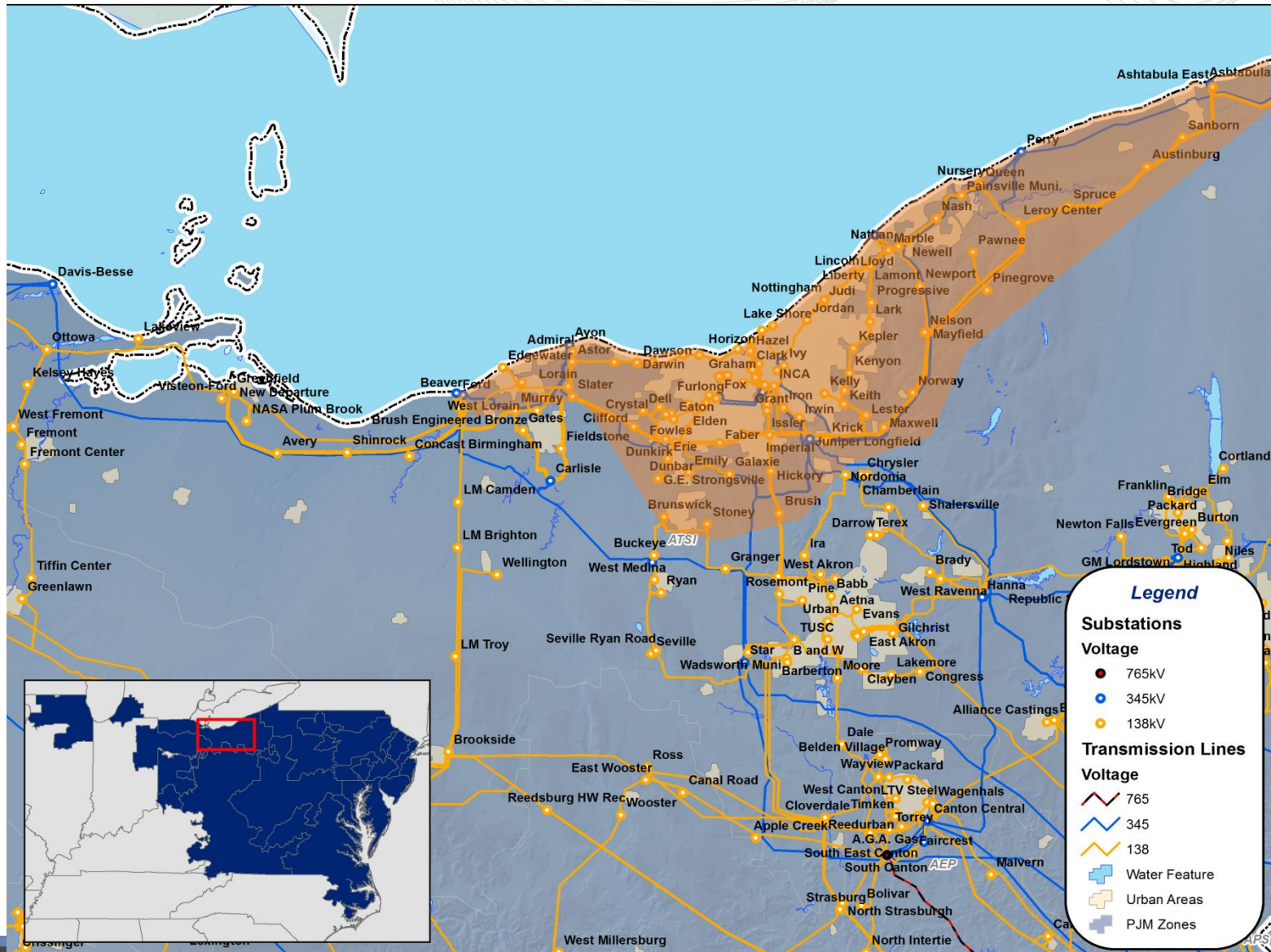
# LDA Evaluation – Cleveland Area

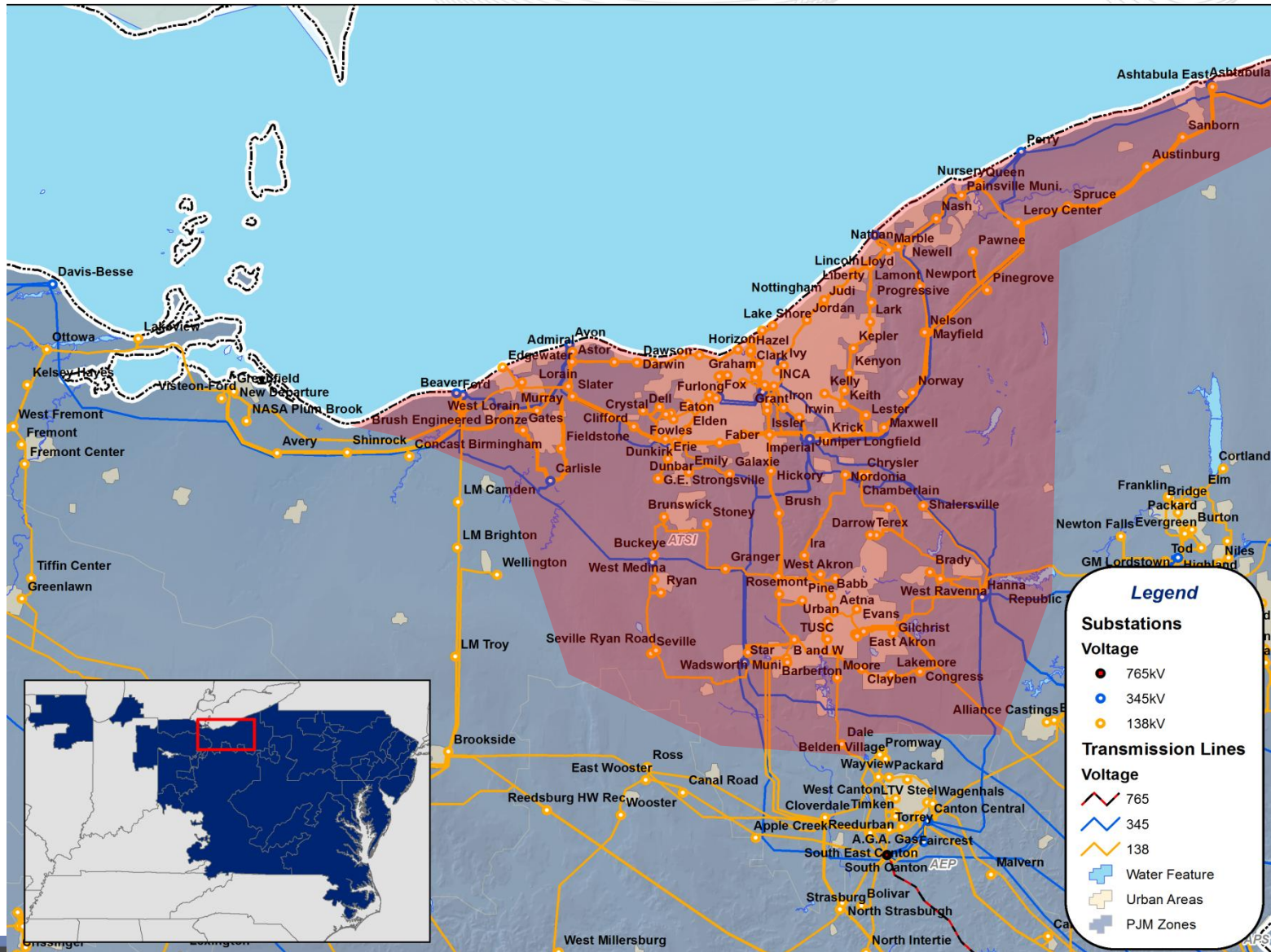
PJM Planning Committee  
Mark Sims  
12/15/2011

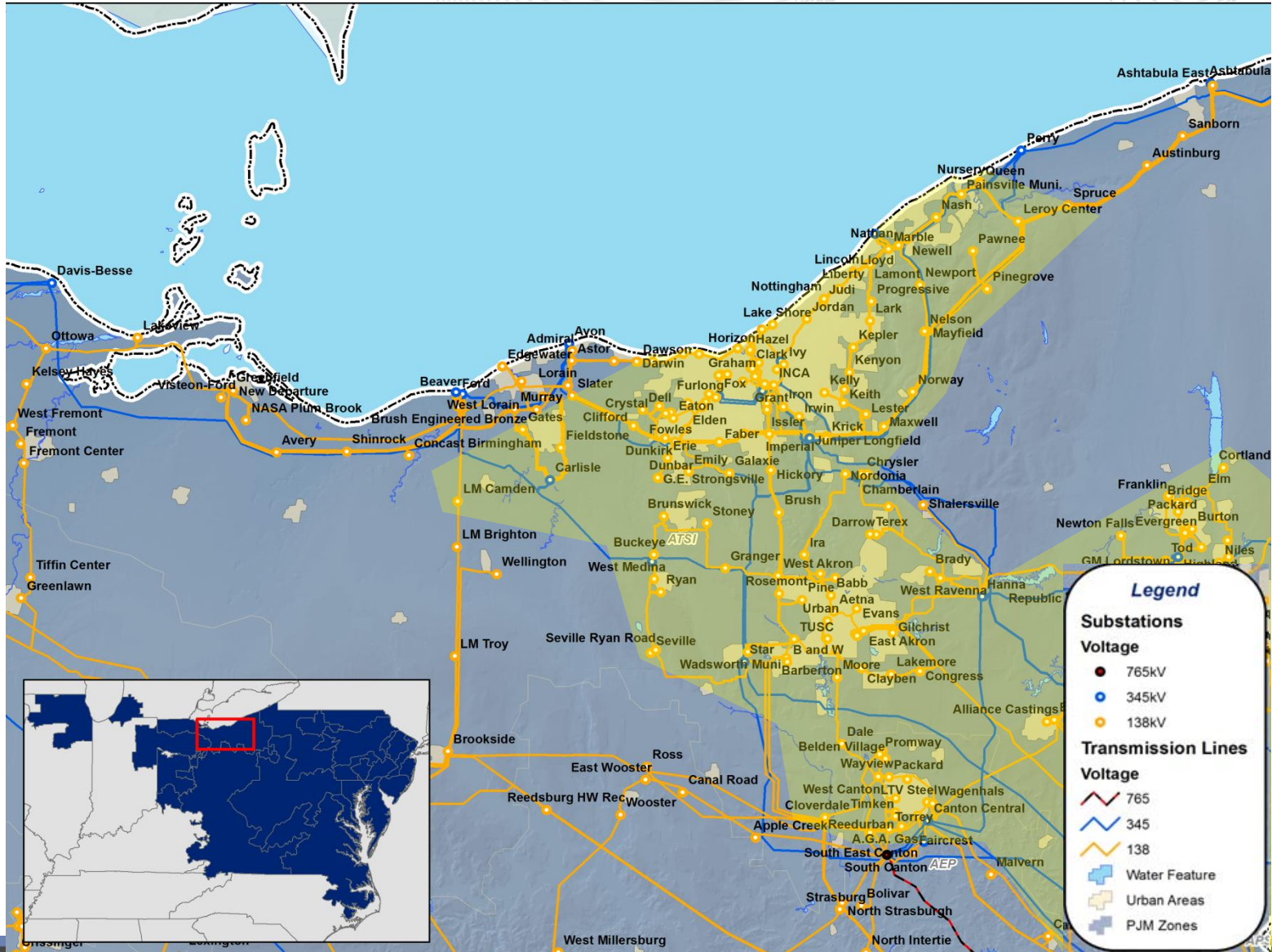
- Overview
- Operations
- At-risk generation
- Simulation

- Existing ATSI LDA
- Cleveland Reactive Operational Interface
- South Canton LDA
- Greater Cleveland LDA

# Approximate Cleveland Reactive Operational Interface







- 2016 Study Year CETO Values

Existing ATSI LDA	South Canton LDA	Greater Cleveland LDA
4360	7010	5080

- $CETL > CETO$  for all three LDA's
- Thermal Limit before Voltage Limit

- Default Voltage Outage Pattern
  - Result:
    - not a stressful voltage dispatch
    - Thermal CETL > 115% of CETO other than a terminal equipment limited facility
  
- Alternative Load Deliverability - Voltage Outage Pattern
  - Result:
    - Voltage Collapse for I/o an at-risk unit
    - Low voltage magnitude

- Importance of Voltage Dispatch pattern
- Stakeholder Input
- Next Steps