

A large, white, lattice-structured transmission tower stands against a clear blue sky. Several power lines are visible, extending from the tower across the frame. The tower is the central focus of the image.

Transmission Expansion Advisory Committee Meeting

July 11, 2006



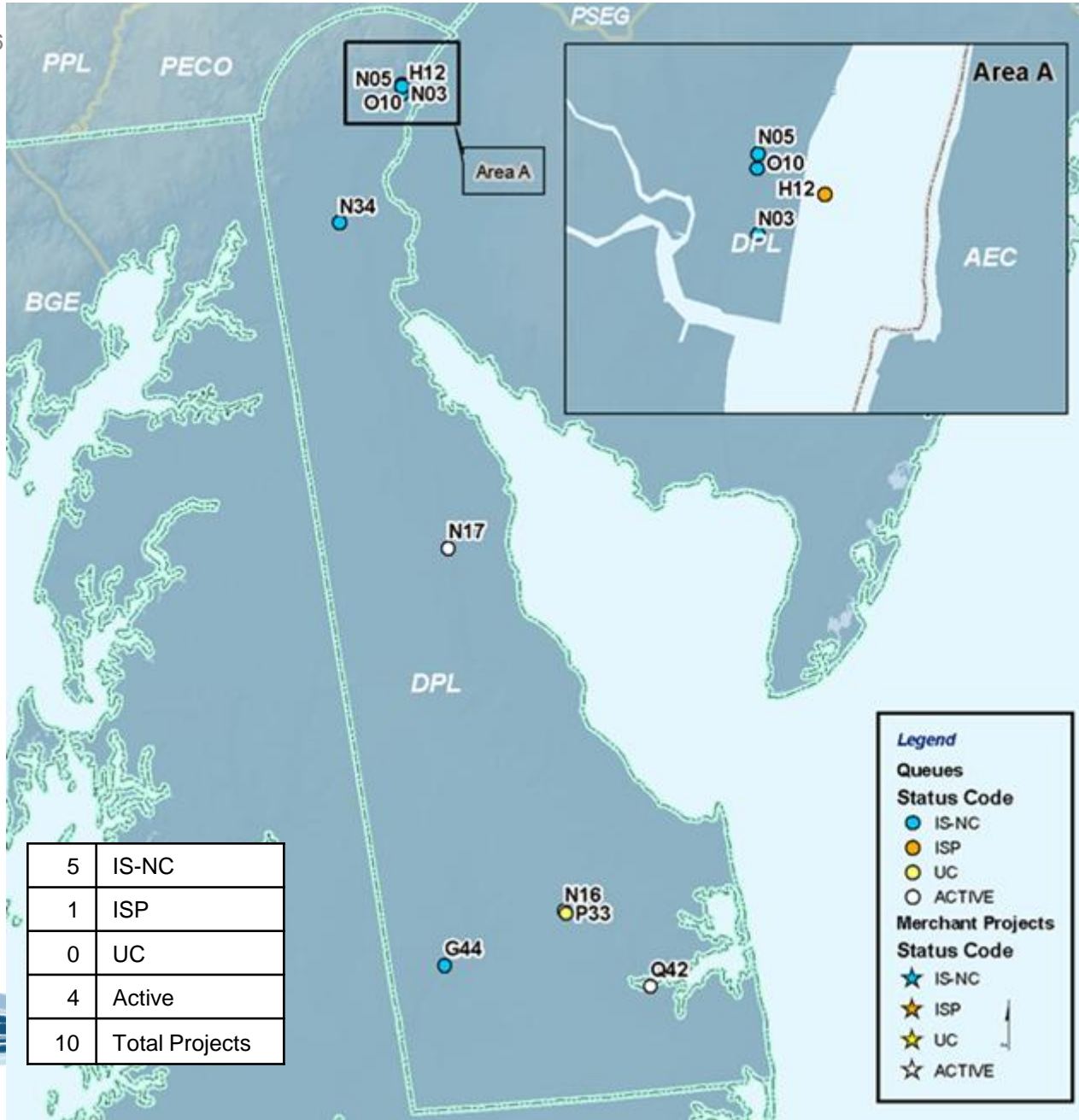
Appendix A

State Summary as of June 30/06:

- Queue Projects
- Network upgrades
- Baseline upgrades

Delaware





5	IS-NC
1	ISP
0	UC
4	Active
10	Total Projects

Legend

Queues

Status Code

- IS-NC
- ISP
- UC
- ACTIVE

Merchant Projects

Status Code

- ★ IS-NC
- ★ ISP
- ★ UC
- ★ ACTIVE

Queue Projects not fully In-Service							
Generation							
Queue	Project Name	TO	MW	MWC	In-Service	Fuel	Status
G44	Dupont Seaford 69kV	DPL	10	10	6/1/2002	Natural Gas	IS-NC
H12	Edgemoor 230kV	DPL	10	10	12/1/2005	Natural Gas	ISP
N03	Edgemoor 69kV	DPL	7	7	8/9/2004	Natural Gas	IS-NC
N05	Edgemoor 138kV	DPL	9	9	8/9/2004	Natural Gas	IS-NC
N16	Kent-Harrington 69kV	DPL	4		12/31/2007	Methane	ACTIVE
N17	Laurel-Sussex 69kV	DPL	3		12/31/2007	Methane	ACTIVE
N34	Motiva	DPL	142	142	12/31/2005	Oil	IS-NC
O10	Edgemoor 138kV	DPL	5	5	6/1/2005	Natural Gas	IS-NC
P33	Laurel - Sussex 69kV	DPL	1		6/30/2006	BioMass	ACTIVE
Q42	Indian River	DPL	630	630	6/1/2011	Natural Gas	ACTIVE

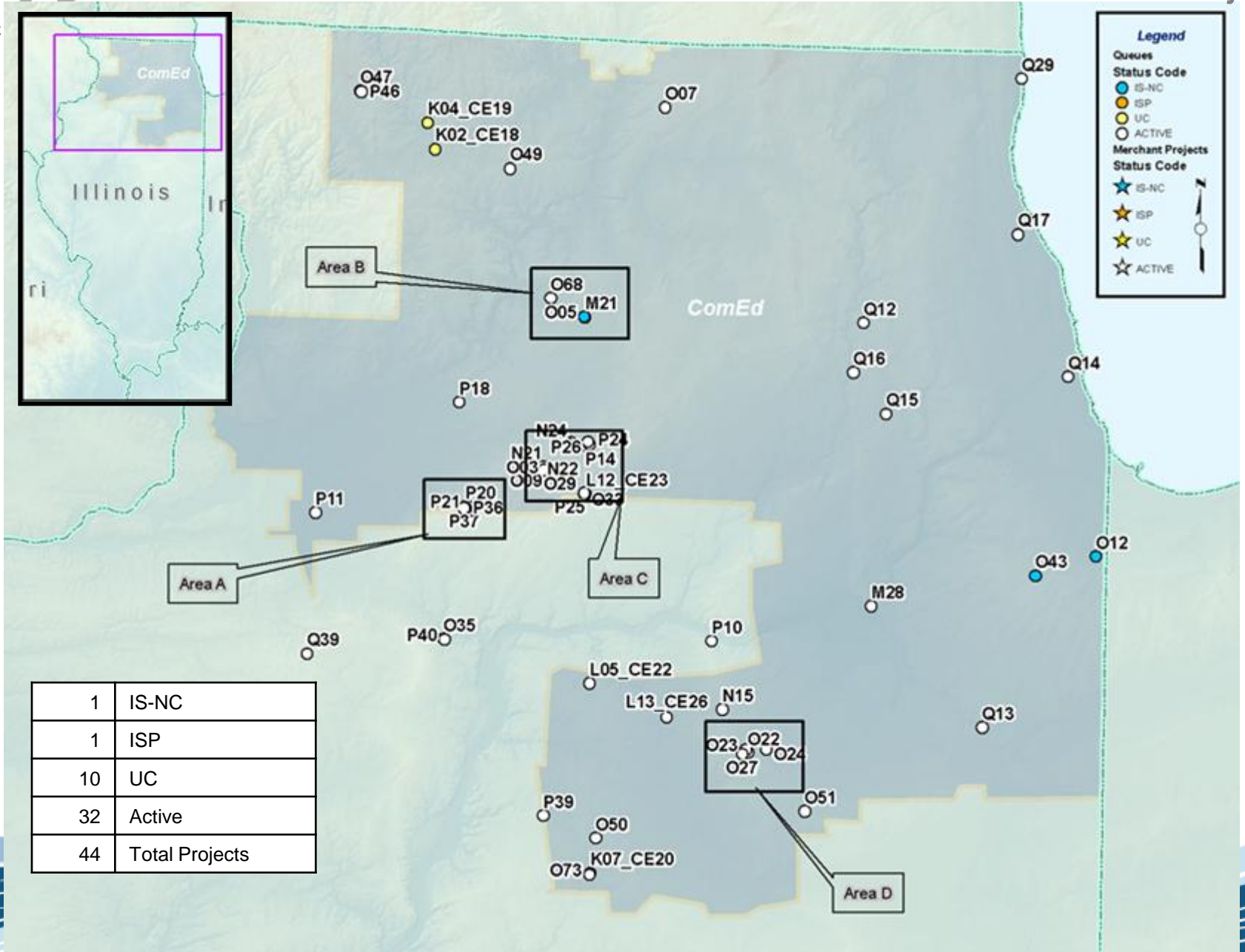
Not In-service previously reviewed at TEAC						
Upgrade #	Description	TO	PJM Required In-Service	Status	Percent complete	
b0144.1	Build new Red Lion – Milford – Indian River 230 kV circuit	DPL	6/1/2006	UC	66%	
b0144.2	Indian River Sub - 230kV Terminal Position	DPL	6/1/2006	UC	30%	
b0144.5	Indian River - 138kV Transmission Line for AT-20	DPL	6/1/2006	UC	30%	
b0144.7	Indian River - (2) 230kV bus ties	DPL	6/1/2006	UC	30%	
b0241.1	Keeney Sub - Replace overstressed breakers	DPL	6/1/2009	EP		
b0241.2	Edge Moor Sub - Replace overstressed breakers	DPL	6/1/2009	EP		
b0241.3	Red Lion Sub - 500/230kV work	DPL	6/1/2009	EP		
b0260	Replace Red Lion 230/138kV transformer	DPL	6/1/2009	EP		
b0261	Replace 1200 Amp disconnect switch on the Red Lion - Reybold 138kV circuit	DPL	6/1/2009	EP		
b0262	Reconductor 0.5 mi of Christiana / Edgemoor 138kV line	DPL	6/1/2009	EP		
b0263	Replace 1200 Amp wavetrapp at Indian River on the Indian River - Frankford 138kV line	DPL	6/1/2010	EP		

Not In-service previously reviewed at TEAC					
Upgrade #	Description	TO	PJM Required In-Service	Status	Percent complete
b0272.1	Replace line trap and disconnect switch at Keeney 500kV Sub - 5025 Line Terminal Upgrade	DPL	5/31/2010	EP	
b0282	Install 46MVAR capacitors on the DPL distribution system	DPL	6/1/2009	EP	
b0291	Replace 1600A disconnect switch at Harmony 230 kV and for the Harmony -Edgemoor 230kV circuit, increase the operating temperature of the conductor	DPL	6/1/2009	EP	
b0295	Raise conductor temperature of North Seaford - Pine Street - Dupont Seaford 69kV	DPL	5/31/2009	EP	
b0296	Rehoboth/Cedar Neck Tap (6733-2) upgrade	DPL	5/31/2008	EP	
b0316	Upgrade Laurel - Mumford 69kV line operating temperature of 477 ACSR @ 125C to 140C	DPL	5/31/2009	EP	
b0320	Create a new 230kV station that splits the 2nd Milford to Indian River 230kV line. Add a 230/69kV transformer and run a new 69kV line down to Harbeson 69kV	DPL	6/1/2010	EP	

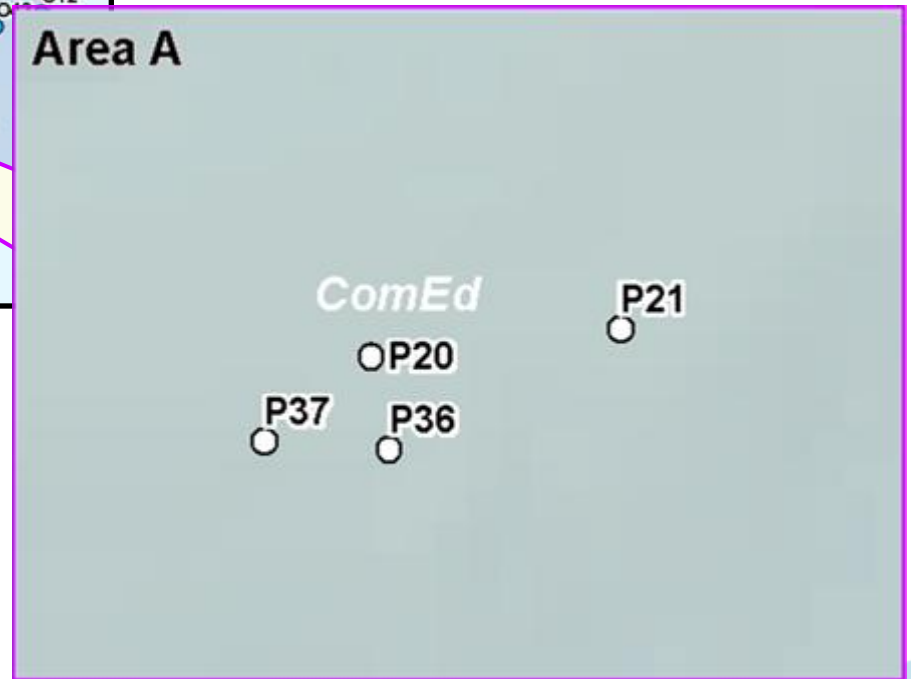
Illinois



TEAC



TEAC Meeting 7-11-2006

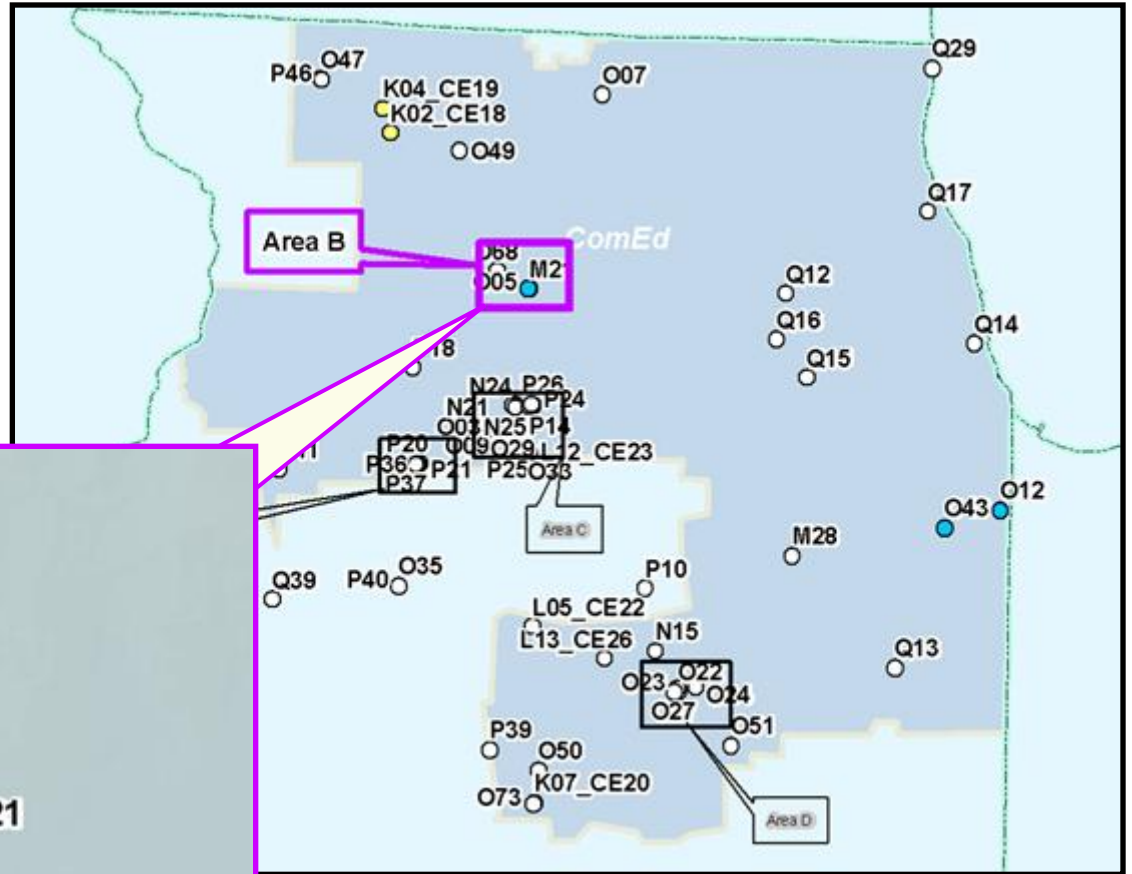


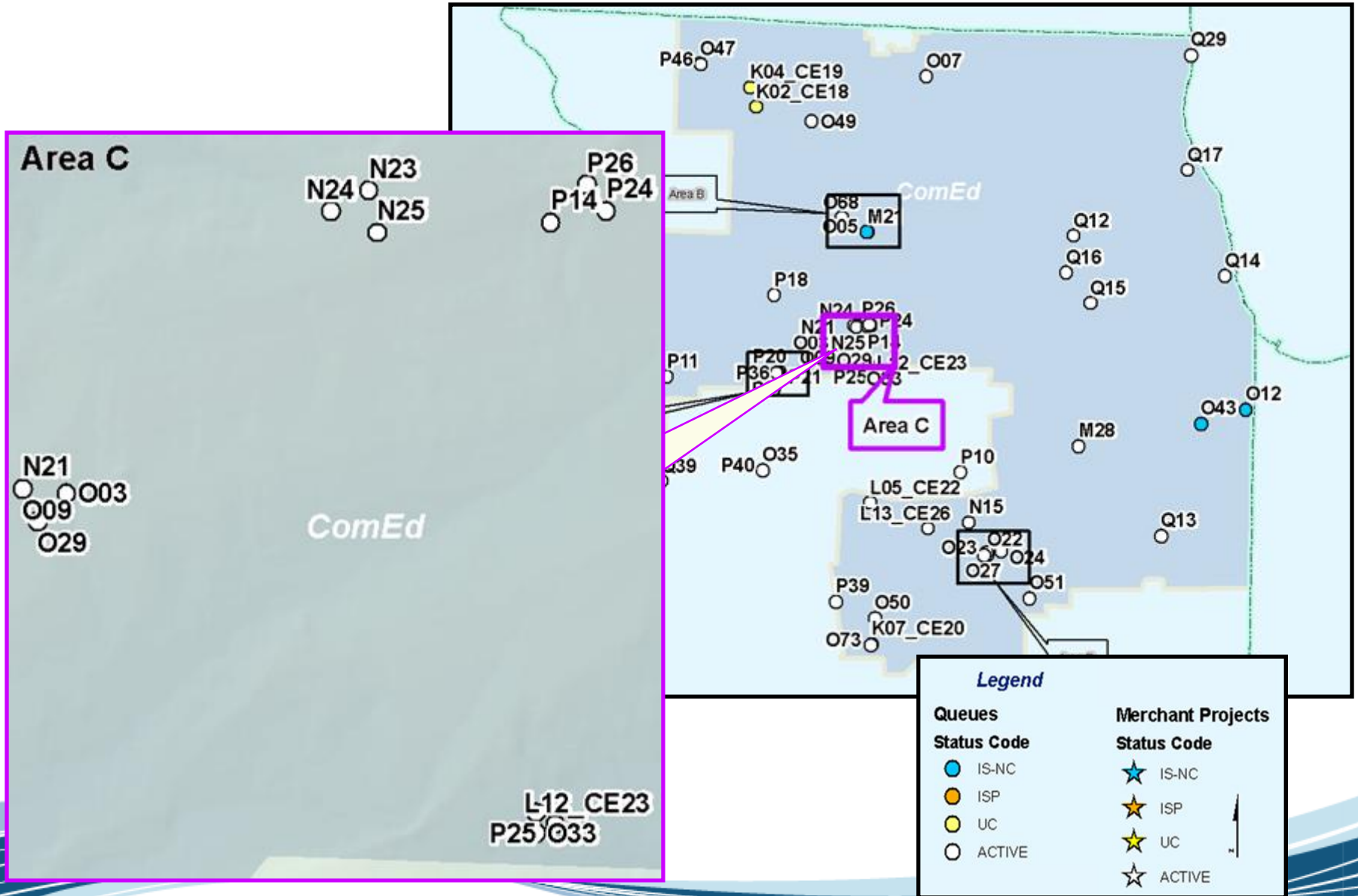
Legend

Queues	Merchant Projects
Status Code	Status Code
IS-NC	IS-NC
ISP	ISP
UC	UC
ACTIVE	ACTIVE

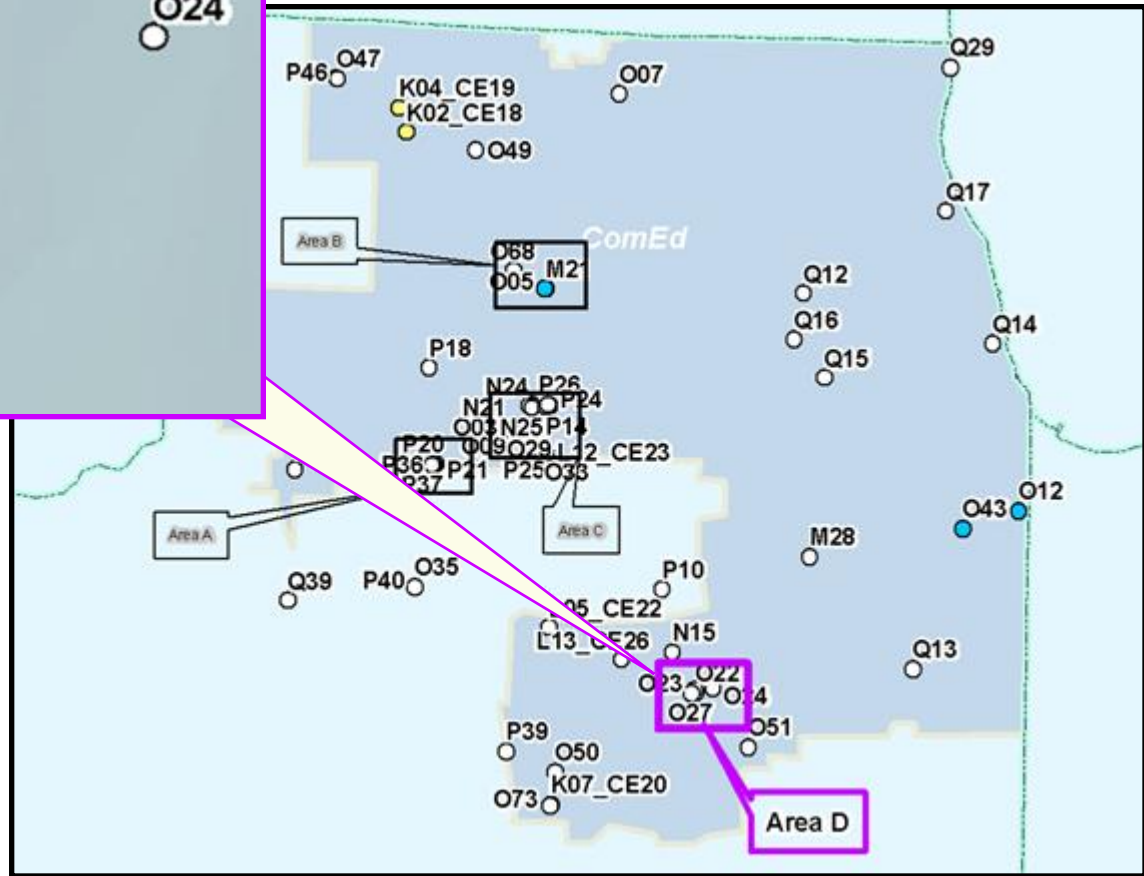
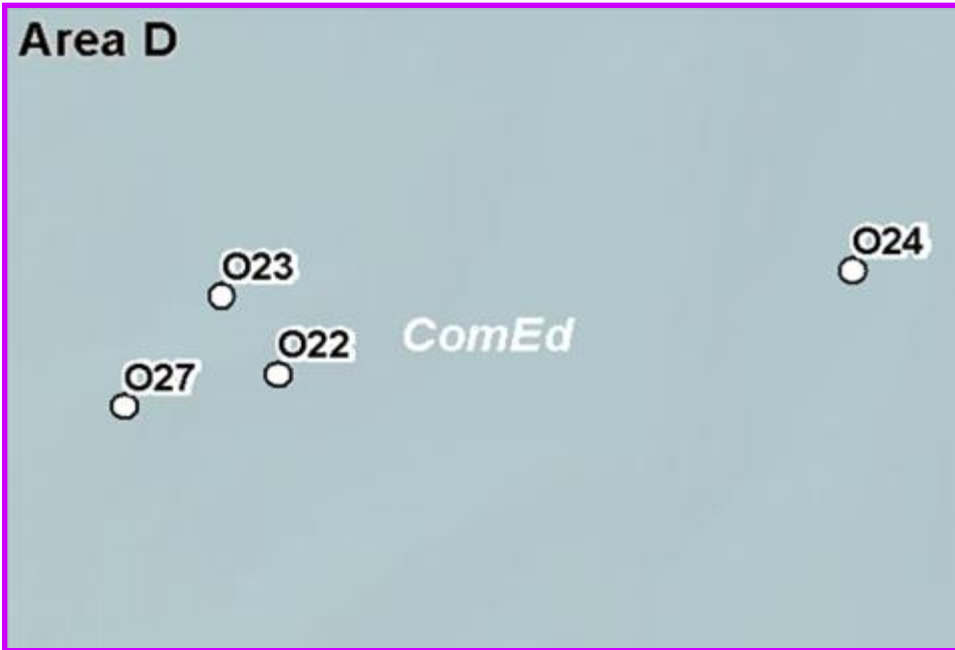
TEAC Meeting 7-11-2006

Legend	
Queues	Merchant Projects
Status Code	Status Code
● IS-NC	★ IS-NC
● ISP	★ ISP
● UC	★ UC
○ ACTIVE	★ ACTIVE





TEAC Meeting 7-11-2006



Legend	
Queues	Merchant Projects
Status Code	Status Code
IS-NC	IS-NC
ISP	ISP
UC	UC
ACTIVE	ACTIVE

Queue Projects not fully In-Service							
Generation							
Queue	Project Name	TO	MW	MWC	In-Service	Fuel	Status
K02_CE18	Baileyville Wind Farm	ComEd	80	16	6/30/2007	Wind	UC
K04_CE19	Freeport Wind Farm	ComEd	80	16	12/31/2007	Wind	UC
K07_CE20	Benson Wind Farm	ComEd	158	31.6	12/31/2007	Wind	UC
L05_CE22	Camp Grove	ComEd	150	30	9/1/2006	Wind	ACTIVE
L12_CE23	West Brooklyn II	ComEd	20	4	1/1/2007	Wind	ACTIVE
L13_CE26	Heartland Grand Ridge	ComEd	175	35	10/30/2006	Wind	ACTIVE
M21	Rochelle	ComEd	20	20	6/30/2006	Diesel	IS-NC
M28	Elwood-Dresden 345kV	ComEd	600	600	1/1/2011	Coal	ACTIVE
N15	LaSalle 138 kV	ComEd	150	30	6/30/2007	Wind	ACTIVE
N21	Sublette Wind II	ComEd	11	2.2	1/1/2007	Wind	ACTIVE
N22	Sublette Wind 3	ComEd	11	2.2	1/1/2007	Wind	ACTIVE

Queue Projects not fully In-Service							
Generation							
Queue	Project Name	TO	MW	MWC	In-Service	Fuel	Status
N23	West Brooklyn Wind 3	ComEd	11	2.2	1/1/2007	Wind	ACTIVE
N24	West Brooklyn 4	ComEd	11	2.2	1/1/2007	Wind	ACTIVE
N25	West Brooklyn 5	ComEd	11	2.2	1/1/2007	Wind	ACTIVE
O03	Sublette	ComEd	11	2.2	1/1/2007	Wind	ACTIVE
O05	Rochelle	ComEd	2	2	6/30/2006	Diesel	IS-NC
O07	Poplar Grove 34.5kV	ComEd	25	5	12/31/2006	Wind	ACTIVE
O09	Normandy	ComEd	212	42.4	12/1/2006	Wind	ACTIVE
O12	Chicago Heights 138kV	ComEd	20	20	12/1/2005	Waste	IS-NC
O22	Powerton-Goodings Grove 345kV	ComEd	300	60	12/1/2008	Wind	ACTIVE
O23	Powerton-Dresden 345kV	ComEd	300	60	12/1/2008	Wind	ACTIVE
O24	Pontiac Midpoint-Dresden 345kV	ComEd	300	60	12/1/2008	Wind	ACTIVE

Queue Projects not fully In-Service							
Generation							
Queue	Project Name	TO	MW	MWC	In-Service	Fuel	Status
O27	Powerton-Goodings Grove 345kV	ComEd	500	100	12/1/2007	Wind	ACTIVE
O29	Normandy 138kV	ComEd	225	45	12/1/2006	Wind	ACTIVE
O33	West Brooklyn 6	ComEd	20	4	12/1/2006	Wind	ACTIVE
O35	Crescent Ridge	ComEd	75	15	12/31/2006	Wind	ACTIVE
O43	University Park	ComEd	54	54	12/1/2005	Natural Gas	IS-NC
O47	Nora	ComEd	10		9/1/2006	Wind	ACTIVE
O49	Wempletown-Byron 345kV	ComEd	200	40	12/1/2007	Wind	ACTIVE
O50	Powerton-Dresden 345kV	ComEd	200	40	12/1/2008	Wind	ACTIVE
O51	Pontiac Midpoint-Wilton Center 345kV	ComEd	500	100	12/31/2007	Wind	ACTIVE
O68	Dixon-Cherry Valley 138kV	ComEd	100	20	12/1/2007	Wind	ACTIVE
O73	Benson 345kV	ComEd	100	20	12/31/2007	Wind	ACTIVE

Queue Projects not fully In-Service							
Generation							
Queue	Project Name	TO	MW	MWC	In-Service	Fuel	Status
P10	LaSalle 138kV	ComEd	200	40	12/31/2006	Wind	ACTIVE
P11	Kewanee 138kV	ComEd	200	40	12/31/2006	Wind	ACTIVE
P14	McGirr - Mendota 138kV	ComEd	80	16	12/1/2006	Wind	ACTIVE
P18	Dixon-Mendota 34.5kV	ComEd	20	4	9/30/2006	Wind	ACTIVE
P20	Nelson-Electric Junction 345kV	ComEd	210	42	9/15/2007	Wind	ACTIVE
P21	McGirr Road - Dixon 138kV	ComEd	150	30	9/15/2007	Wind	ACTIVE
P24	Mendota 34.5kV	ComEd	20	4	12/1/2007	Wind	ACTIVE
P25	Mendota 34.5kV	ComEd	20	4	12/1/2007	Wind	ACTIVE
P26	Mendota 34.5kV	ComEd	20	4	12/1/2007	Wind	ACTIVE
P36	Nelson-Lee Co. EC 345kV	ComEd	240	48	9/15/2007	Wind	ACTIVE
P37	Normandy 138kV	ComEd	212	42.4	9/15/2007	Wind	ACTIVE

Queue Projects not fully In-Service							
Generation							
Queue	Project Name	TO	MW	MWC	In-Service	Fuel	Status
P39	Kewanee-Powerton 138kV	ComEd	60	12	11/1/2007	Wind	ACTIVE
P40	Crescent Ridge 138kV	ComEd	20	4	6/30/2006	Wind	ACTIVE
P46	Lena 138kV	ComEd	100	20	10/1/2007	Wind	ACTIVE
Q12	Fox River Heights 12kV	ComEd	1.6	1.6	12/31/2006	Methane	ACTIVE
Q13	Kankakee 12kV	ComEd	1.6	1.6	12/31/2006	Methane	ACTIVE
Q14	Hegewisch 12kV	ComEd	6.6	6.6	12/31/2006	Methane	ACTIVE
Q15	Woodridge 12kV	ComEd	6.6	6.6	12/31/2006	Methane	ACTIVE
Q16	Western Ave 12kV	ComEd	6.6	6.6	12/31/2006	Methane	ACTIVE
Q17	Northbrook 12kV	ComEd	6.6	6.6	12/31/2006	Methane	ACTIVE
Q29	Zion 12kV	ComEd	6	5.4	6/15/2002	Methane	ACTIVE
Q39	Kewanee 138kV	ComEd	147	0	12/31/2007	Wind	ACTIVE

Queue Projects not fully In-Service

Generation

Queue	Project Name	TO	MW	MWC	In-Service	Fuel	Status
Q49	Dresden 345kV	ComEd	70	70	10/31/2009	Nuclear	ACTIVE
Q50	Dresden 345kV	ComEd	70	70	10/31/2010	Nuclear	ACTIVE
Q51	Quad City 345kV	ComEd	140	140	10/31/2010	Nuclear	ACTIVE

Not In-service previously reviewed at TEAC						
Upgrade #	Description	TO	PJM Required In-Service	Status	Percent complete	
b0099	Install third Nelson 345/138kV	ComEd	6/1/2008	EP		
b0104	Install a 345/138kV transformer at East Frankfort and reconductor East Frankfort - Mokena Tap 138kV	ComEd	6/1/2008	UC	25%	
b0105	Install new 138 kV line 11107 from Electric Junction to Warrenville	ComEd	6/1/2008	EP	20%	
b0236.1	New West Loop 138kV substation	ComEd	6/1/2008	UC	78%	
b0236.2	Install two new 345kV circuits from Crawford and Taylor to West Loop and two new 345/138kV autotransformers at West Loop	ComEd	6/1/2008	UC		
b0299	Upgrade line 0108 - LaSalle County-Mazon 138kV with 3.4 miles of 664.8 ACSS	ComEd	6/1/2007	EP		
b0301	Increase capacity of Wolfs-Oswego 138kV line 14304	ComEd	6/1/2007	EP	20%	
b0302	Dixon-McGirr 138kV - Replace small piece of conductor on line 10714 and install 138 kV CB at Sandwich	ComEd	6/1/2007	EP		
b0303	Install 345 kV CB and change Elwood 345 kV BT to normally closed	ComEd	6/1/2008	EP		

Not In-service previously reviewed at TEAC					
Upgrade #	Description	TO	PJM Required In-Service	Status	Percent complete
b0304	Reconductor line 11106 Electric Junction - North Aurora tap 4 miles	ComEd	6/1/2008	EP	
b0305	Normally open East Frankfort 138 kV red-blue bus tie	ComEd	6/1/2008	EP	
b0306	Reconductor line 11104 0.3 miles Electric Junction - N. Aurora	ComEd	6/1/2007	EP	
b0377	Install a second Byron-Wempletown 345kV circuit (15 Year Upgrade)	ComEd	6/1/2014	EP	
b0379	Reconductor 10301 & 10302 Lisle - Lombard 138kV circuits	ComEd	5/31/2010	EP	
b0380	Reconductor 17713 from Burnham - Wildwood and 7611 from Wildwood to the Beverly tap (about 6.9 miles total)	ComEd	5/31/2010	EP	

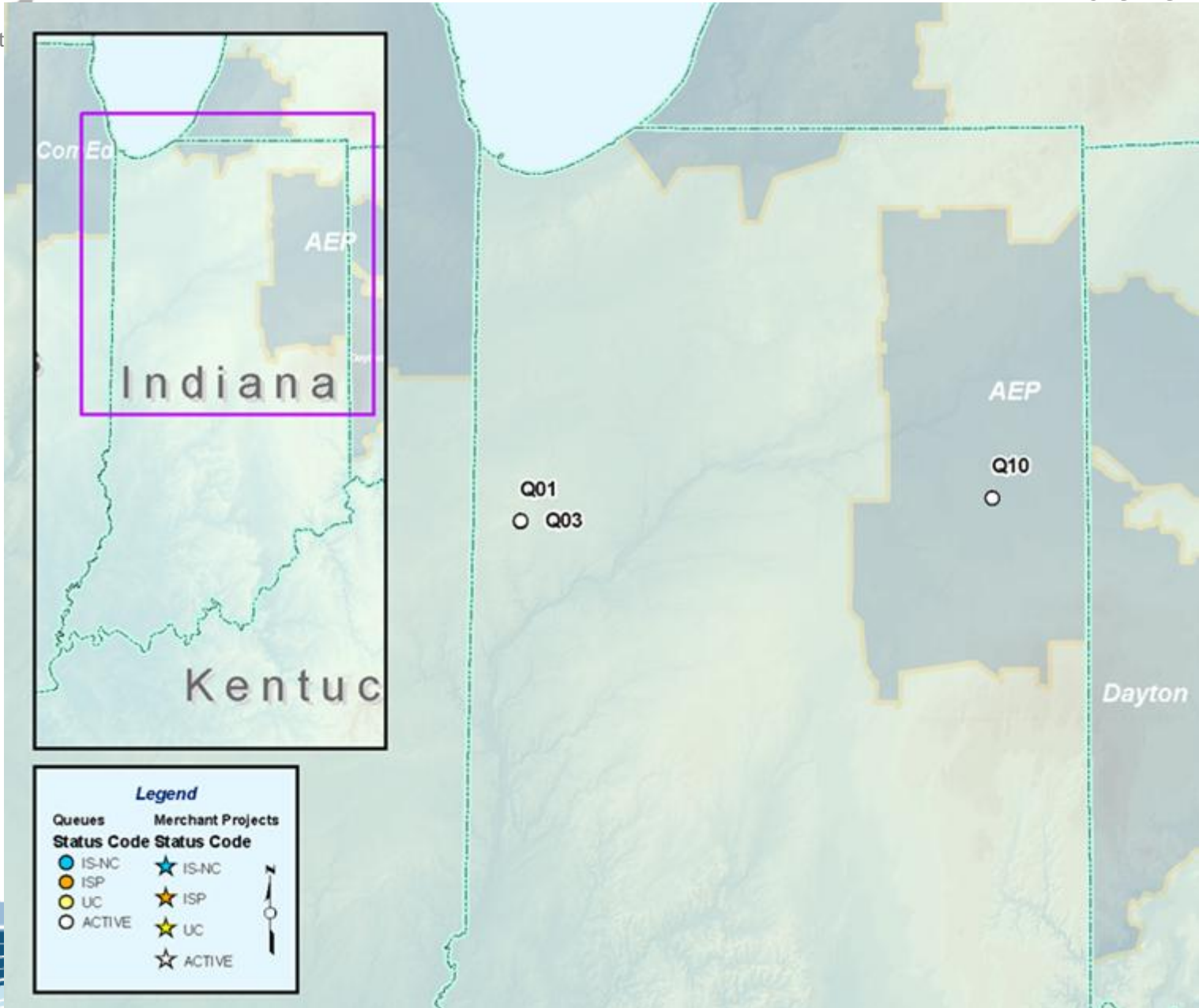
Not In-service previously reviewed at TEAC					
NU #	Description	TO	Status	Cost (\$M)	Queue allocation
n0402	Install new Baileyville TSS-992 138kV Substation	ComEd	EP	\$ 1.200	K02_CE18
n0403	Maryland 138kV line 11902 Line Relaying	ComEd	EP	\$ 0.100	K02_CE18
n0404	Lancaster 138kV line 11902 Line Relaying	ComEd	EP	\$ 0.100	K02_CE18
n0405	Install new Freeport TSS-992 138kV Substation	ComEd	EP	\$ 1.350	K04_CE19
n0406	Lancaster 138kV line 11921 Line Relaying	ComEd	EP	\$ 0.300	K04_CE19
n0407	Wempletown 138kV line 17121 Line Relaying	ComEd	EP	\$ 0.300	K04_CE19
n0413	Install new TSS 996 Benson 345kV 3-CB Ring bus	ComEd	EP	\$ 1.700	K07_CE20
n0414	Upgrade Sta. 12 Dresden 1202 line relaying	ComEd	EP	\$ 0.500	K07_CE20
n0415	Upgrade Sta. 3 Powerton 0302 line relaying	ComEd	EP	\$ 0.500	K07_CE20
n0417	Install a new three breaker bus and associated equipment at Grand Ridge TSS 999	ComEd	No ISA	\$ 8.253	L13_CE26
n0418	Upgrade line relaying at Streator TSS 61 to be compatible with TSS 999 Terminal	ComEd	No ISA	\$ 0.350	L13_CE26

Not In-service previously reviewed at TEAC					
NU #	Description	TO	Status	Cost (\$M)	Queue allocation
n0419	Upgrade line relaying at LaSalle Sta. 1 to be compatible with TSS 999 Terminal	ComEd	No ISA	\$ 0.350	L13_CE26
n0421	Install new Toulon TSS 81 Substation	ComEd	No ISA	\$ 4.587	L05_CE22
n0422	Tap Toulon TSS 81 into existing Powerton - Kewanee 138kV	ComEd	No ISA	\$ 0.590	L05_CE22
n0423	Upgrade line relaying at Kewanee TSS 741 to be compatible with TSS 997 terminal	ComEd	No ISA	\$ 0.350	L05_CE22
n0424	Upgrade line relaying at Powerton Sta. 3 to be compatible with TSS 997 terminal	ComEd	No ISA	\$ 0.350	L05_CE22
n0425	Replace disconnect switches at Kewanee TSS 74	ComEd	No ISA	\$ 0.890	L05_CE22
n0448	Line 6102 cut-in of new 3 CB 138kV station	ComEd	No ISA	\$ 0.661	N15
n0449	Streator/Cove Creek L6102 line relaying upgrades	ComEd	No ISA	\$ 0.900	N15
n0450	LaSalle L6102 line relaying upgrades	ComEd	No ISA	\$ 0.900	N15
n0451	Marsailles relaying - wavetrap / PLC upgrades	ComEd	No ISA		N15

Indiana



TEAC Meet

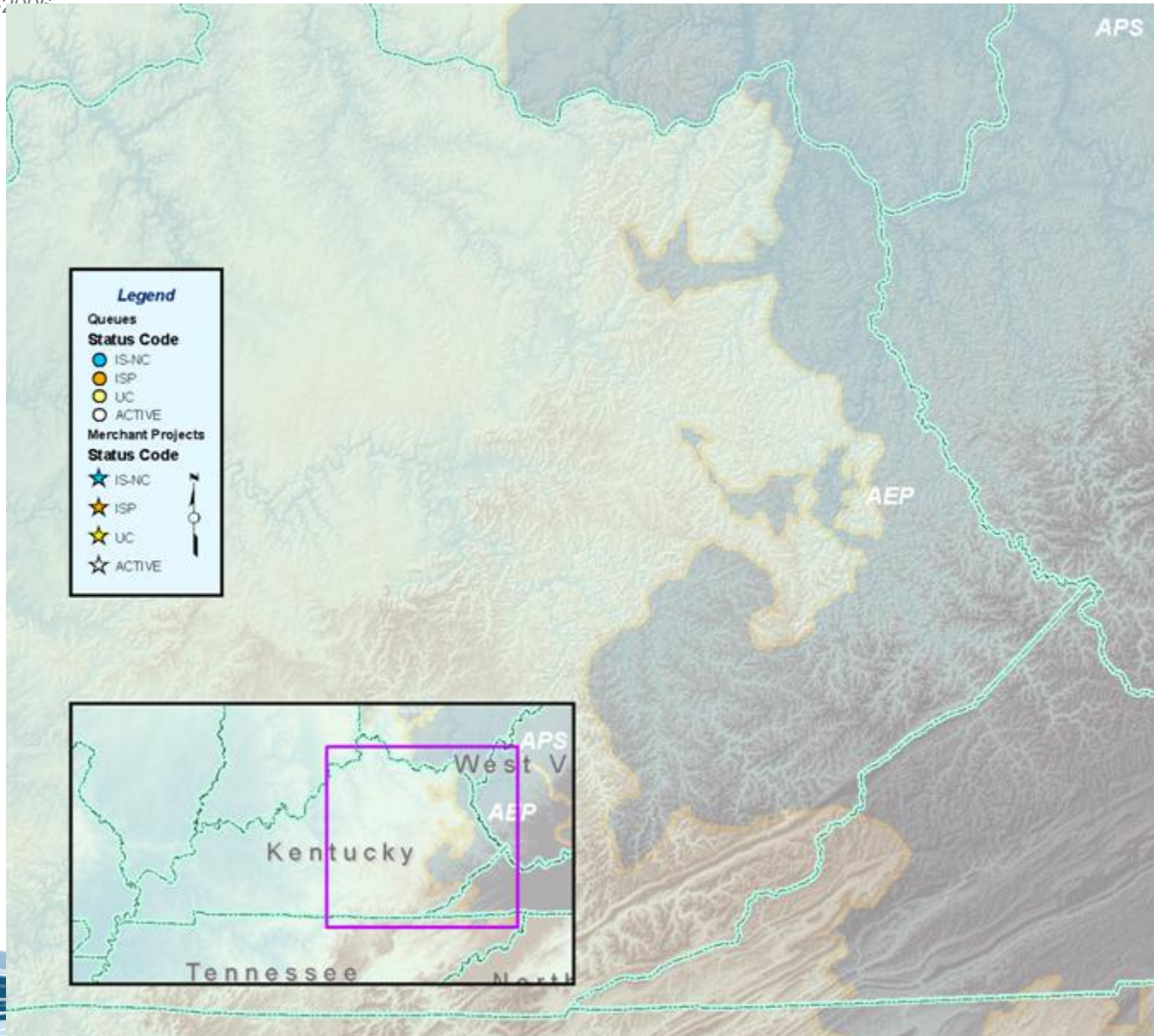


Queue Projects not fully In-Service								
Generation								
Queue	Project Name	TO	MW	MWC	In-Service	Fuel	Status	
Q01	Olive-Duquine 345kV	AEP	500	100	12/1/2008	Wind	ACTIVE	
Q03	Olive-Duquine 345kV	AEP	250	50	12/1/2009	Wind	ACTIVE	
Q10	Keystone 345kV	AEP	27	27	12/31/2006	Natural Gas	ACTIVE	

Note: No Baseline upgrades that are not in-service that were previously reviewed at TEAC

Kentucky





Not In-service previously reviewed at TEAC

NU #	Description	TO	Status	Cost (\$M)	Queue allocation
n0427	Replace 138kV circuit breaker 'W' at Bellefonte 138kV Station	AEP	No ISA	\$ 0.344	L01_AEP137
n0430	Upgrade the primary and back-up carrier relaying facilities at Bellefonte 138kV Station	AEP	No ISA	\$ 0.300	L01_AEP137

Note:

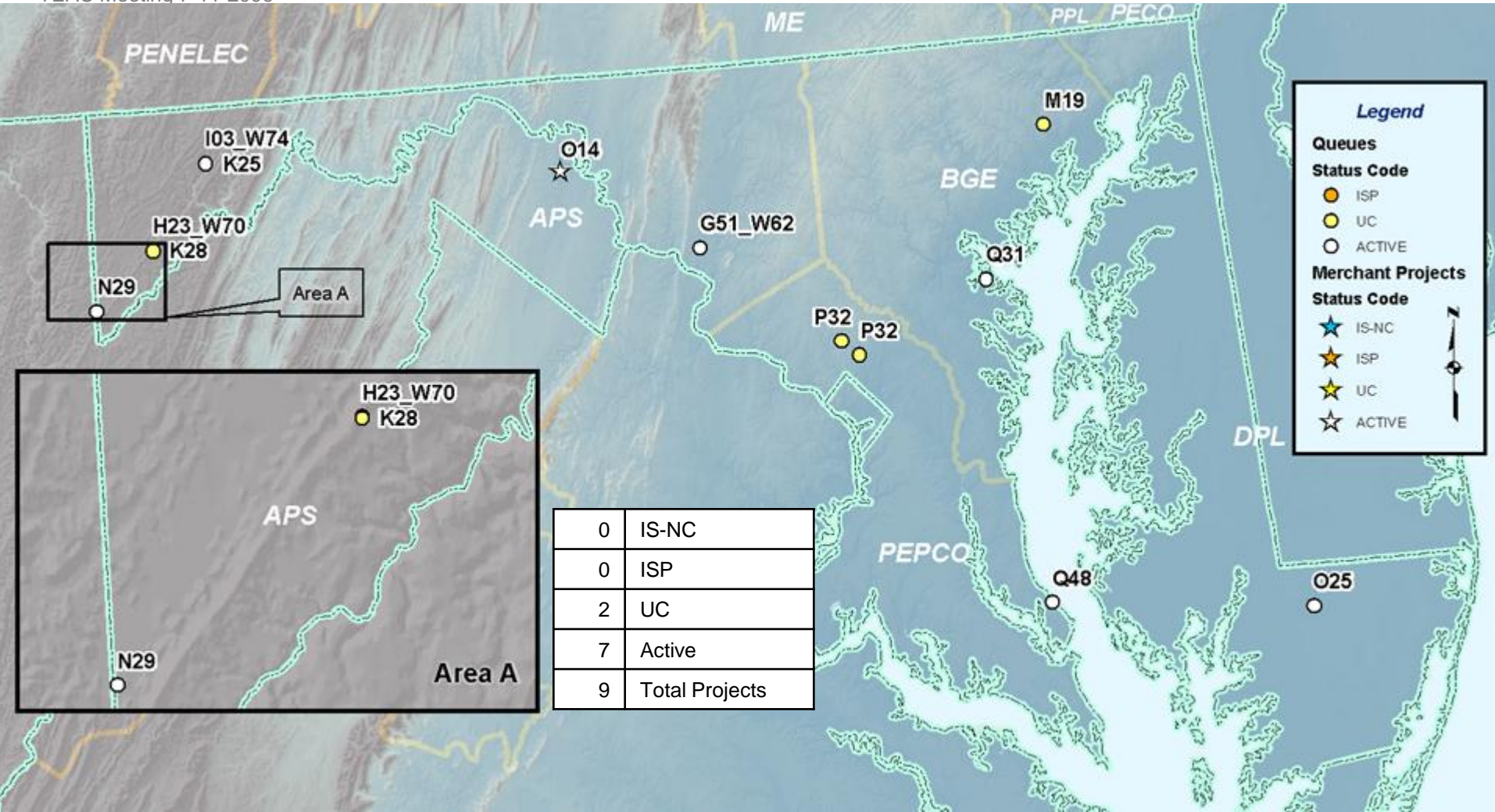
No Baseline upgrades that are not in-service that were previously reviewed at TEAC



Maryland & D.C.



TEAC Meeting 7-11-2006



Queue Projects not fully In-Service								
Generation								
Queue	Project Name	TO	MW	MWC	In-Service	Fuel	Status	
G51_W62	Eastalco 230 kV	APS	640	640	6/30/2009	Natural Gas	ACTIVE	
H23_W70 / K28	Kelso Gap 138 kV	APS	100	19.8	11/6/2006	Wind	UC	
I03_W74 / K25	Savage 138kV	APS	40	8	12/1/2007	Wind	ACTIVE	
M19	Otter Point	BGE	4.5		6/1/2006	Methane	UC	
N29	Roth Rock 138kV	APS	40	8	12/31/2007	Wind	ACTIVE	
O25	N. Salisbury 25kV	DPL	6	6	1/1/2007	Methane	ACTIVE	
P32	White Oak	PEPCO	13.5		12/31/2007	Natural Gas	UC	
Q31	Wagner 34kV	BGE	10	0	6/1/2006	Natural Gas	ACTIVE	
Q48	Calvert Cliffs	BGE	1640	1640	12/15/2015	Nuclear	ACTIVE	
Merchant								
O14	Black Oak - Bedington RTU	APS				AC	ACTIVE	

Not In-service previously reviewed at TEAC					
Upgrade #	Description	TO	PJM Required In-Service	Status	Percent complete
b0030	Construct a new 230kV tower line to separate the existing Brandon Shores-Riverside DCTL to eliminate MAAC 2C violation	BGE	6/1/2005	EP	0%
b0039.5	Install Waugh Chapel 230kV 360MVAR capacitor bank	BGE	6/1/2006	EP	
b0055	Add 44 MVAR cap at Carroll 138 KV	APS	6/1/2005	UC	95%
b0146.2	Replace Quince Orchard 230kV circuit breaker for line 23028	PEPCO	6/1/2006	UC	0%
b0168	Upgrade Oak Grove 230kV Breaker 5C	PEPCO	6/1/2006	UC	30%
b0187	Upgrade Dickerson Station "D" 230kV 1A	PEPCO	6/1/2006	UC	30%
b0188	Upgrade Dickerson Station "D" 230 kV 1B	PEPCO	6/1/2006	UC	30%
b0189	Upgrade Dickerson Station "D" 230 kV 2A	PEPCO	6/1/2006	UC	30%
b0190	Upgrade Dickerson Station "D" 230 kV 2B	PEPCO	6/1/2006	UC	30%
b0191	Upgrade Dickerson Station "D" 230 kV 3A	PEPCO	6/1/2006	UC	30%
b0192	Upgrade Dickerson Station "D" 230 kV 3B	PEPCO	6/1/2006	UC	30%

Not In-service previously reviewed at TEAC						
Upgrade #	Description	TO	PJM Required In-Service	Status	Percent complete	
b0193	Upgrade Dickerson Station "D" 230 kV 5A	PEPCO	6/1/2006	UC	30%	
b0194	Upgrade Dickerson Station "D" 230 kV 6C	PEPCO	6/1/2006	UC	30%	
b0195	Upgrade Dickerson Station "D" 230 kV 1C	PEPCO (Mirant)	6/1/2006	EP	0%	
b0196	Upgrade Dickerson Station "D" 230 kV 2C	PEPCO (Mirant)	6/1/2006	EP	0%	
b0197	Upgrade Dickerson Station "D" 230 kV 3C	PEPCO (Mirant)	6/1/2006	EP	0%	
b0219	Install two new 230kV circuits between Palmers Corner and Blue Plains	PEPCO	6/1/2007	EP	20%	
b0228	Upgrade Burtonsville - Sandy Springs 230kV circuit	PEPCO	5/1/2010	EP		
b0238	Reconductor Doubs - Dickerson and Doubs - Aqueduct 1200MVA	APS	6/1/2009	EP		
b0244	Install a 4th Waugh Chapel 500/230kV transformer, terminate the transformer in a new 500 kV bay and operate the existing in-service spare transformer on standby	BGE	5/31/2008	EP		
b0247	Install 14 MVAR of 69kV bus capacitors at Quince Orchard	PEPCO	6/1/2006	EP		

Not In-service previously reviewed at TEAC					
Upgrade #	Description	TO	PJM Required In-Service	Status	Percent complete
b0250	Install 108 MVAR of feeder capacitors at various locations	PEPCO	6/1/2006	EP	
b0251	Install 100 MVAR of 230kV capacitors at Bells Mill	PEPCO	6/1/2009	EP	
b0252	Install 100 MVAR of 230kV capacitors at Bells Mill	PEPCO	6/1/2009	EP	
b0272.2	Replace a wave trap and potential transformer at Rock Spring 500kV substation - 5025 Line Terminal Upgrade	ODEC	6/1/2010	EP	
b0282	Install 46MVAR capacitors on the DPL distribution system	DPL	6/1/2009	EP	
b0288	Brighton Substation - Add 2nd 1000 MVA 500/230kV transformer, 2 500kV circuit breakers and miscellaneous bus work	PEPCO	5/31/2009	EP	
b0298	Replace both Conastone 500/230kV transformers with larger transformers	BGE	5/31/2009	EP	
b0319	Add a second 1000 MVA Burches Hill 500/230kV transformer	PEPCO	6/1/2011	EP	
b0322	Convert Lime Kiln substation to 230kV operation	APS	6/1/2011	EP	
b0343	Replace Doubs 500/230 kV transformer #2	APS	6/1/2011	EP	
b0344	Replace Doubs 500/230 kV transformer #3	APS	6/1/2011	EP	

Not In-service previously reviewed at TEAC					
Upgrade #	Description	TO	PJM Required In-Service	Status	Percent complete
b0345	Replace Doubs 500/230 kV transformer #4	APS	6/1/2011	EP	
b0347.1	Build new Mt. Storm - 502 Junction 500kV circuit	APS	6/1/2011	EP	
b0366	Install 4th Ritchie 230/69kV transformer	PEPCO	5/1/2011	EP	
b0367	Reconductor 230kV Quince Orchard to Dickerson circuits 33 & 35	PEPCO	5/1/2011	EP	
b0373	Convert Doubs - Monocacy 138kV facilities to 230kV operation	APS	6/1/2009	EP	
b0375	Install 0.5% reactor on the Pleasant View - Dickerson 230kV circuit	PEPCO	6/1/2011	EP	

Not In-service previously reviewed at TEAC						
NU #	Description	TO	Status	Cost (\$M)	Queue allocation	
n0258	Upgrade Dickerson Station "H" 230 kV 411C	PEPCO	No ISA	\$ 0.044	G51_W62	
n0259	Upgrade Dickerson Station "H" 230 kV 412A	PEPCO	No ISA	\$ 0.044	G51_W62	
n0260	Upgrade Dickerson Station "H" 230 kV 42A	PEPCO	No ISA	\$ 0.044	G51_W62	
n0261	Upgrade Dickerson Station "H" 230 kV 42C	PEPCO	No ISA	\$ 0.044	G51_W62	
n0262	Upgrade Dickerson Station "H" 230 kV 43A	PEPCO	No ISA	\$ 0.044	G51_W62	
n0263	Upgrade Dickerson Station "H" 230 kV 43B	PEPCO	No ISA	\$ 0.044	G51_W62	
n0264	Upgrade Dickerson Station "H" 230 kV 44A	PEPCO	No ISA	\$ 0.044	G51_W62	
n0265	Upgrade Dickerson Station "H" 230 kV 44B	PEPCO	No ISA	\$ 0.044	G51_W62	
n0266	Upgrade Dickerson Station "H" 230 kV 44C	PEPCO	No ISA	\$ 0.044	G51_W62	
n0267	Upgrade Dickerson Station "H" 230 kV 45B	PEPCO	No ISA	\$ 0.044	G51_W62	

Not In-service previously reviewed at TEAC					
NU #	Description	TO	Status	Cost (\$M)	Queue allocation
n0268	Upgrade Dickerson Station "H" 230 kV 45C	PEPCO	No ISA	\$ 0.044	G51_W62
n0269	Upgrade Dickerson Station "H" 230 kV 46C	PEPCO	No ISA	\$ 0.044	G51_W62
n0270	Upgrade Dickerson Station "H" 230 kV 47A	PEPCO	No ISA	\$ 0.044	G51_W62
n0321	Replace DOUBS 230KV BREAKER "D2"	AP	No ISA	\$ 0.300	G51_W62
n0322	Replace DOUBS 230KV BREAKER "D3"	AP	No ISA	\$ 0.300	G51_W62
n0323	Replace DOUBS 230KV BREAKER "D6"	AP	No ISA	\$ 0.300	G51_W62
n0324	Replace DOUBS 230KV BREAKER "D8"	AP	No ISA	\$ 0.300	G51_W62
n0325	Replace DOUBS 230KV BREAKER "D9"	AP	No ISA	\$ 0.300	G51_W62
n0326	Replace DOUBS 230KV BREAKER "D14"	AP	No ISA	\$ 0.300	G51_W62
n0327	Replace DOUBS 230KV BREAKER "D16"	AP	No ISA	\$ 0.300	G51_W62

Not In-service previously reviewed at TEAC

NU #	Description	TO	Status	Cost (\$M)	Queue allocation
n0355	Complete a coordination review of the area around the new Savage Mountain station, develop new relay settings, and implement the required changes	AP	No ISA	\$ 0.005	I03_W74
n0356	Install dual primary relaying on the 138 kV circuit from the new Savage station	AP	No ISA	\$ 0.173	I03_W74
n0385	Replace DOUBS 230KV BREAKER "D4"	AP	No ISA	\$ 0.300	G51_W62
n0386	Replace DOUBS 230KV BREAKER "D5"	AP	No ISA	\$ 0.300	G51_W62
n0487	Support Eastalco 230kV switchyard interconnection	AP	No ISA		G51_W62
n0490	Support Kelso Gap 138kV switchyard interconnection	AP	EP	\$ 0.437	H23_W70

Michigan



TEAC M

Legend

Queues


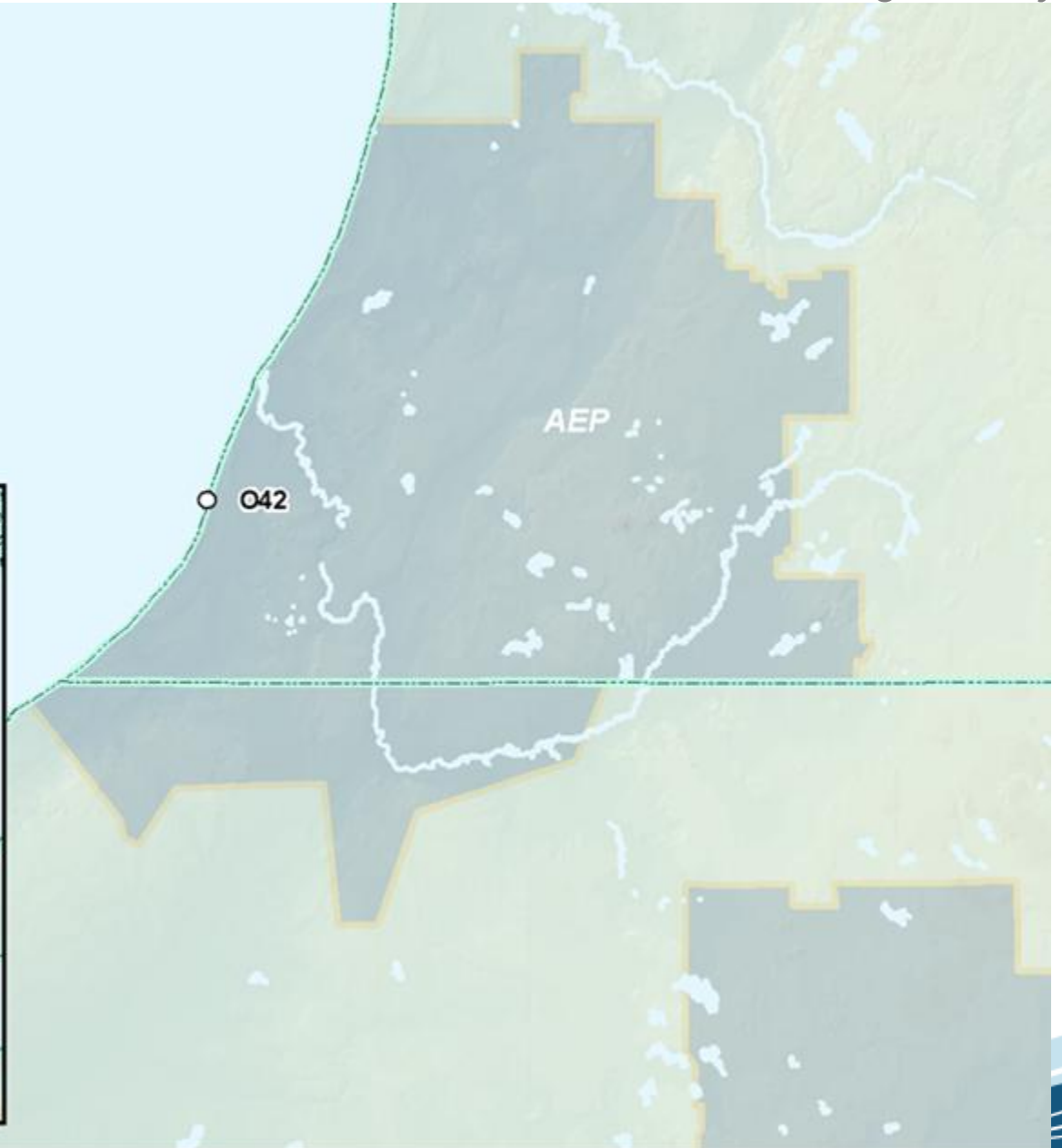
Status Code

- IS-NC
- ISP
- UC
- ACTIVE

Merchant Projects

Status Code

- ★ IS-NC
- ★ ISP
- ★ UC
- ★ ACTIVE

Queue Projects not fully In-Service							
Generation							
Queue	Project Name	TO	MW	MWC	In-Service	Fuel	Status
O42	Cook 345 kV	AEP	84	84	10/1/2006	Nuclear	ACTIVE

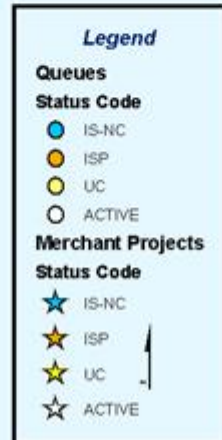
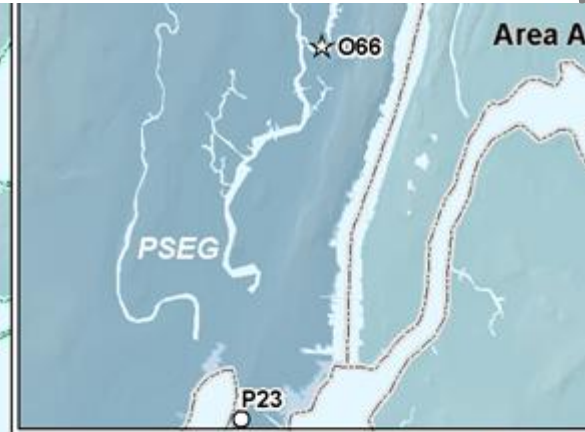
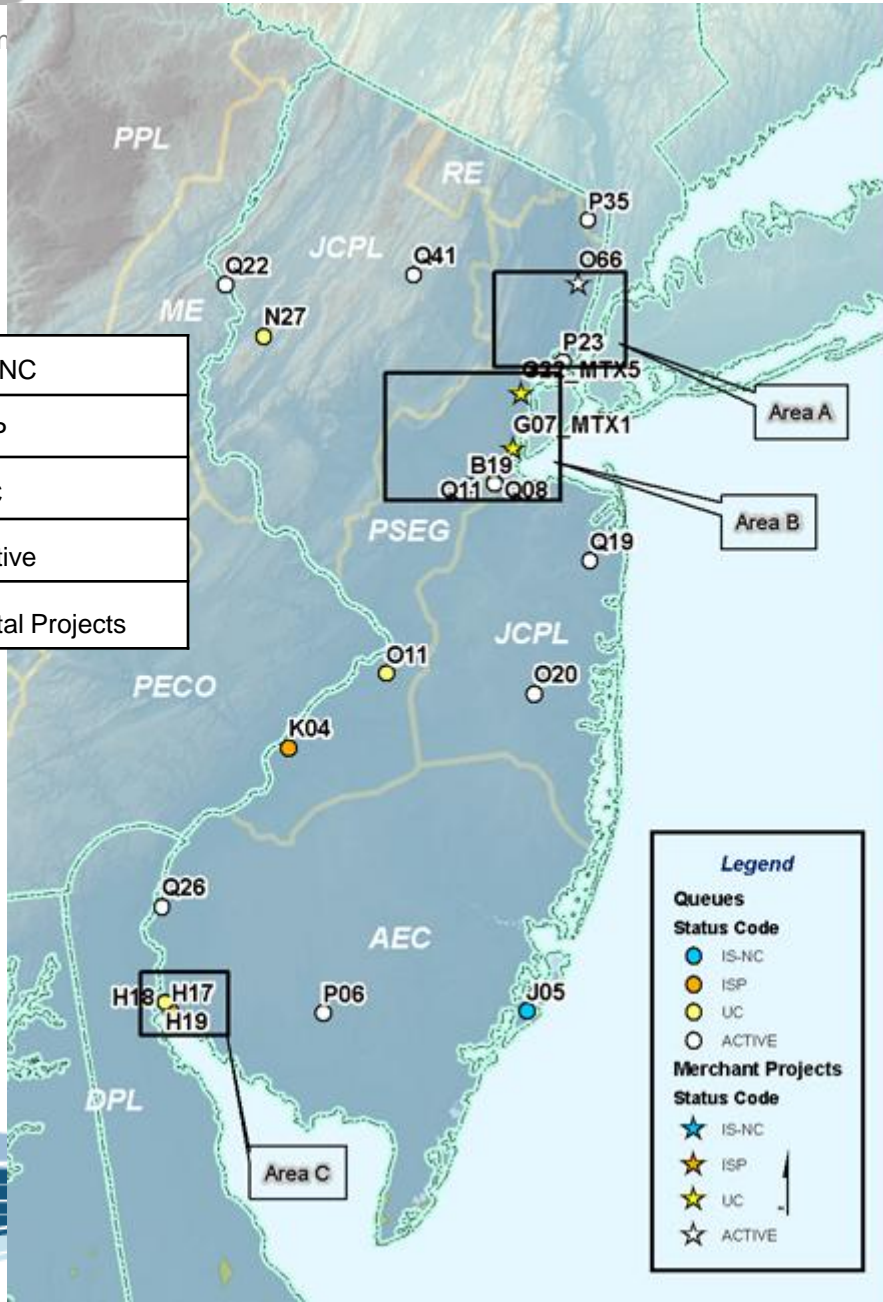
Note: No Baseline upgrades that are not in-service that were previously reviewed at TEAC

New Jersey



TEAC Meeting

0	IS-NC
3	ISP
5	UC
11	Active
19	Total Projects



Queue Projects not fully In-Service								
Generation								
Queue	Project Name	TO	MW	MWC	In-Service	Fuel	Status	
H17	Salem 500kV	PSEG	115	115	6/1/2008	Nuclear	ISP	
H18	Hope Creek 500kV	PSEG	78	78	12/1/2007	Nuclear	ISP	
H19	Hope Creek 500kV	PSEG	43	43	12/1/2007	Nuclear	UC	
K04	Camden 26kV	PSEG	5		6/30/2005	Methane	ISP	
N27	Pequest River 34.5 kV	JCPL	4	4	7/1/2006	Methane	UC	
O11	Bustelton 13kV	PSEG	7.125	7.1	6/1/2007	Natural Gas	UC	
O20	Lakehurst 34.5kV	JCPL	9.6	9.6	12/31/2006	Methane	ACTIVE	
P06	Cumberland 230kV	ACE	366	366	12/31/2008	Natural Gas	ACTIVE	
P23	Bayonne 138kV	PSEG	45.5	45.5	6/1/2007	Natural Gas	ACTIVE	
P35	Pleasantville	ACE	2	2	7/31/2006	Natural Gas	ACTIVE	
Q08	Red Oak 230kV	JCPL	50	50	6/1/2008	Natural Gas	ACTIVE	

Queue Projects not fully In-Service							
Generation							
Queue	Project Name	TO	MW	MWC	In-Service	Fuel	Status
Q11	Red Oak 230kV	JCPL	300	300	6/1/2008	Natural Gas	ACTIVE
Q19	Atlantic 34.5 kV	JCPL	1	1	11/1/2006	Methane	ACTIVE
Q22	Columbia 34.5kV	JCPL	0.5	0.5	12/26/2006	Hydro	ACTIVE
Q26	Churchtown 230kV	ACE	550	550	12/31/2008	Natural Gas	ACTIVE
Q41	Mt. Hope Mine 34.5kV	JCPL	30		1/1/2008	BioMass	ACTIVE
Merchant							
G07_MTX1	Sayreville 230kV	JCPL	790		6/30/2007	HVDC	UC
G22_MTX5	Linden 230kV	PSEG	300		4/4/2007	VFT	UC
O66	Bergen 230kV	PSEG	670	670	7/1/2009	HVDC	ACTIVE

Not In-service previously reviewed at TEAC					
Upgrade #	Description	TO	PJM Required In-Service	Status	Percent complete
b0025	Convert the Bergen-Leonia 138kV circuit to 230kV circuit.	PSEG	6/1/2008	EP	
b0066	Replace Linden 230KV circuit breaker #2-3	PSEG	5/31/2007	EP	
b0071	Loop the W-1323 line into the Bayway 138 kV bus	PSEG	6/1/2008	EP	
b0073	Reconductor 605 ft of the Kearny-Turnpike "D" 138 kV circuit	PSEG	6/1/2008	EP	
b0131	Replace all de-rated New Freedom 500/230 kV transformers	PSEG	6/1/2007	EP	
b0132	Reconductor Portland - Kittatinny 230kV with 1590ACSS	JCPL	6/1/2007	EP	
b0132.1	Replace terminal equipment on the Portland - Kittatinny 230kV and CB at the Kitatatinny bus	JCPL	5/1/2011	EP	
b0132.2	Replace terminal equipment on the Portland - Kittatinny 230kV and CB at the Portland bus	JCPL	5/1/2011	EP	
b0134	Reconductor Kittatinny – Newton 230 kV with 1590 ACSS	PSEG	6/1/2007	EP	30%
b0135	Build new Cumberland – Dennis 230 kV circuit which replaces existing Cumberland – Corson 138 kV	ACE	12/1/2007	EP	
b0136	Install Dennis 230/138 kV, Dennis 150 MVAR SVC and 50 MVAR capacitor	ACE	12/1/2007	EP	

Not In-service previously reviewed at TEAC					
Upgrade #	Description	TO	PJM Required In-Service	Status	Percent complete
b0137	Build new Dennis – Corson 138 kV circuit	ACE	12/1/2007	EP	
b0138	Install Cardiff 230/138 kV transformer and a 50 MVAR capacitor at Cardiff	ACE	12/1/2007	EP	
b0139	Build new Cardiff – Lewis 138 kV circuit	ACE	12/1/2007	EP	
b0140	Reconductor Laurel – Woodstown 69 kV	ACE	12/1/2007	EP	
b0141	Reconductor Monroe – North Central 69 kV	ACE	12/1/2007	UC	99%
b0142	Reconductor Landis – Minotola 138 kV	ACE	12/1/2007	EP	
b0143	Reconductor Beckett – Paulsboro 69 kV	ACE	12/1/2007	EP	
b0145	Build new Essex – Aldene 230 kV cable connected through a phase angle regulator at Essex	PSEG	5/31/2007	UC	35%
b0153	Replace Hudson 230 kV breaker BS2-3	PSEG	5/31/2007	EP	
b0155	Replace Linden 230 kV breaker BS5-6	PSEG	5/31/2007	EP	
b0157	Add 100MVAR capacitor at West Orange 138kV substation	PSEG	6/1/2007	EP	

Not In-service previously reviewed at TEAC						
Upgrade #	Description	TO	PJM Required In-Service	Status	Percent complete	
b0158	Close the Sunnymeade "C" and "F" bus tie	PSEG	6/1/2008	EP		
b0159	Make the Bayonne reactor permanent installation	PSEG	6/1/2009	EP		
b0160	Relocate the X-2250 circuit from Hudson 1-6 bus to Hudson 7-12 bus	PSEG	6/1/2007	EP		
b0161	Install 230/138kV transformer at Metuchen substation	PSEG	6/1/2009	EP		
b0162	Upgrade the Edison – Meadow Rd 138kV “Q” circuit	PSEG	6/1/2009	EP		
b0163	Upgrade the Edison – Meadow Rd 138kV “R” circuit	PSEG	6/1/2009	EP		
b0169	Build a new 230 kV section from Branchburg – Flagtown and move the Flagtown - Somerville 230 kV circuit to the new section	PSEG	6/1/2008	EP		
b0170	Reconductor the Flagtown-Somerville-Bridgewater 230 kV circuit with 1590 ACSS	PSEG	6/1/2008	EP		
b0172.2	Replace wave trap on 5016 line at Branchburg 500kV substation	PSEG	6/1/2008	EP		
b0173	Replace a line trap at Newton 230kV substation for the Kittatinny-Newton 230kV circuit	JCPL	6/1/2008	EP		
b0174	Upgrade the Portland – Greystone 230kV circuit	JCPL	6/1/2008	EP		

Not In-service previously reviewed at TEAC					
Upgrade #	Description	TO	PJM Required In-Service	Status	Percent complete
b0184	Replace Hudson 230kV circuit breakers #1-2	PSEG	5/31/2007	EP	
b0186	Replace Essex 230kV circuit breaker #5-6	PSEG	5/1/2007	EP	
b0199	Greystone 230kV substation: Change Tap of limiting CT and replace breaker on the Greystone - Whippany (Q1031) 230kV line	JCPL	6/1/2008	EP	
b0200	Greystone 230kV substation: Change Tap of limiting CT on the West Wharton - Greystone (E1045) 230kV line	JCPL	6/1/2008	EP	
b0201	Branchburg substation: replace wave trap on M-2265 Branchburg - Readington 230kV circuit	PSEG	6/1/2008	EP	
b0202	Kittatinny 230kV substation: Replace line trap on Kittatinny - Pohatcong (L2012) 230kV line; Pohatcong 230kV substation: Change Tap of limiting CT on Kittatinny - Pohatcong (L2012) 230kV line	JCPL	6/1/2008	EP	
b0203	Smithburg 230kV Substation: Replace line trap on the East Windsor - Smithburg (E2005) 230kV line; East Windsor 230kV substation: Replace line trap on the East Windsor - Smithburg (E2005) 230kV line	JCPL	6/1/2008	EP	
b0204	Install 72Mvar capacitor at Cookstown 230kV substation	JCPL	6/1/2008	UC	60%
b0210	Install a new 500/230kV substation in AE area, the high side will be tapped on the Salem - East Windsor 500kV circuit and the low side will be tapped on the Churchtown - Cumberland 230kV circuit.	ACE	6/1/2008	EP	
b0211	Reconductor Union - Corson 138kV circuit	ACE	6/1/2008	EP	
b0212	Corson upgrade 138kV line trap	ACE	6/1/2008	EP	

Not In-service previously reviewed at TEAC					
Upgrade #	Description	TO	PJM Required In-Service	Status	Percent complete
b0213	Modify New Freedom bus to allow switching of a single phase 500/230kV for failure of any in-service single phase transformers	PSEG	6/1/2008	EP	
b0214	Install 50 MVAR capacitor at Cardiff 230kV substation	AEC	6/1/2008	EP	
b0265	Upgrade AE portion of Delco Tap - Mickleton 230kV circuit	AEC	6/1/2009	EP	
b0267	Reconductor Newton 230kV lines T2298 & N2214 to transmission line tap	JCPL	6/1/2009	EP	
b0268	Reconductor the 8 mile Gilbert - Glen Gardner 230kV circuit	JCPL	6/1/2009	EP	
b0274	Replace both 230/138kV transformers at Roseland	PSEG	6/1/2009	EP	
b0275	Upgrade the two 138kV circuits between Roseland and West Orange	PSEG	6/1/2009	EP	
b0276	Replace both Monroe 230/69 kV transformers	AEC	6/1/2009	EP	
b0277	Install a second Cumberland 230/138 kV transformer	AEC	6/1/2009	EP	
b0278	Install 228MVAR capacitor at Roseland 230kV substation	PSEG	6/1/2009	EP	
b0279.1	Install 100MVAR capacitor at Glen Gardner substation	JCPL	6/1/2009	EP	

Not In-service previously reviewed at TEAC					
Upgrade #	Description	TO	PJM Required In-Service	Status	Percent complete
b0279.10	Install 6.6MVAR capacitor at Hamburg Boro Q Bus 34.5kV substation	JCPL	6/1/2009	EP	
b0279.11	Install 6.6MVAR capacitor at Newburg Q Bus 34.5kV substation	JCPL	6/1/2009	EP	
b0279.2	Install 100MVAR capacitor at Kittatinny 230kV substation	JCPL	6/1/2009	EP	
b0279.3	Install 17.6MVAR capacitor at Freneau 34.5kV substation	JCPL	6/1/2009	EP	
b0279.4	Install 6.6MVAR capacitor at Waretown #1 bank 34.5kV substation	JCPL	6/1/2009	EP	
b0279.5	Install 10.8MVAR capacitor at Spottswood #2 bank 34.5kV substation	JCPL	6/1/2009	EP	
b0279.6	Install 6.6MVAR capacitor at Pequannock N bus 34.5kV substation	JCPL	6/1/2009	EP	
b0279.7	Install 6.6MVAR capacitor at Haskell P bus 34.5kV substation	JCPL	6/1/2009	EP	
b0279.8	Install 6.6MVAR capacitor at Pinewald #2 Bank 34.5kV substation	JCPL	6/1/2009	EP	
b0279.9	Install 6.6MVAR capacitor at Matrix 34.5kV substation	JCPL	6/1/2009	EP	
b0281.1	Install 35MVAR capacitor at Lake Ave 69kV substation	ACE	6/1/2009	EP	

Not In-service previously reviewed at TEAC						
Upgrade #	Description	TO	PJM Required In-Service	Status	Percent complete	
b0281.2	Install 15MVAR capacitor at Shipbottom 69 kV substations	ACE	6/1/2009	EP		
b0281.3	Install 8MVAR capacitors on the AE distribution system	ACE	6/1/2009	EP		
b0286	Install 130MVAR capacitor at Whippany 230kV substation	JCPL	6/1/2009	EP		
b0289	Install 600MVAR Dynamic Reactive Device in the Whippany 230kV vicinity	JCPL	6/1/2010	EP		
b0290	Install 400MVAR capacitor in the Branchburg 500kV vicinity	PSEG	6/1/2010	EP		
b0292	Replace a 1600A line trap at Atlantic and Larrabee 230kV substation	JCPL	6/1/2009	EP		
b0293.1	Replace wavetrapp at the Martins Creek 230 kV bus	PPL	5/1/2011	EP		
b0293.2	Raise the operating temperature of the 2-1590 ACSR to 140C for the Martins Creek - Portland 230 kV circuit	PPL	5/1/2011	EP		
b0314	Install 32 MVAR capacitor at Closter 69kV substation	RE	6/1/2009	EP		
b0315	Build a new 230kV circuit between Linden and South Waterfront	PSEG	6/1/2011	EP		
b0350	Operating Procedure of closing the Glendon-Gilbert 115kV circuit	JCPL	5/1/2011	EP		

Not In-service previously reviewed at TEAC					
Upgrade #	Description	TO	PJM Required In-Service	Status	Percent complete
b0356	Replace wave trap on the Portland - Greystone 230kV	JCPL	5/1/2011	EP	
b0358	Reconductor the PSEG portion of Buckingham - Pleasant Valley 230kV, replace wave trap and metering transformer	PSEG	5/1/2011	EP	
b0368	Reconductor Tosco - G22_MTX 230kV circuit with 1033 bundled ACSS	PSEG	5/1/2011	EP	
b0371	Metuchen - close tie breaker 1-3 & replace breakers 1BM (bus 1-3), 1LM (line R-1318), 1PM (xfmr 132-2), 2PM (xfmr 132-1), 3LM (line Q-1317), 5LM (line M-1313)	PSEG	5/1/2010	EP	
b0372	Athenia - close tie breaker 1-2 & replace breakers 2BH (bus 2-3), 5LH (xfmr 132-3)	PSEG	5/1/2010	EP	

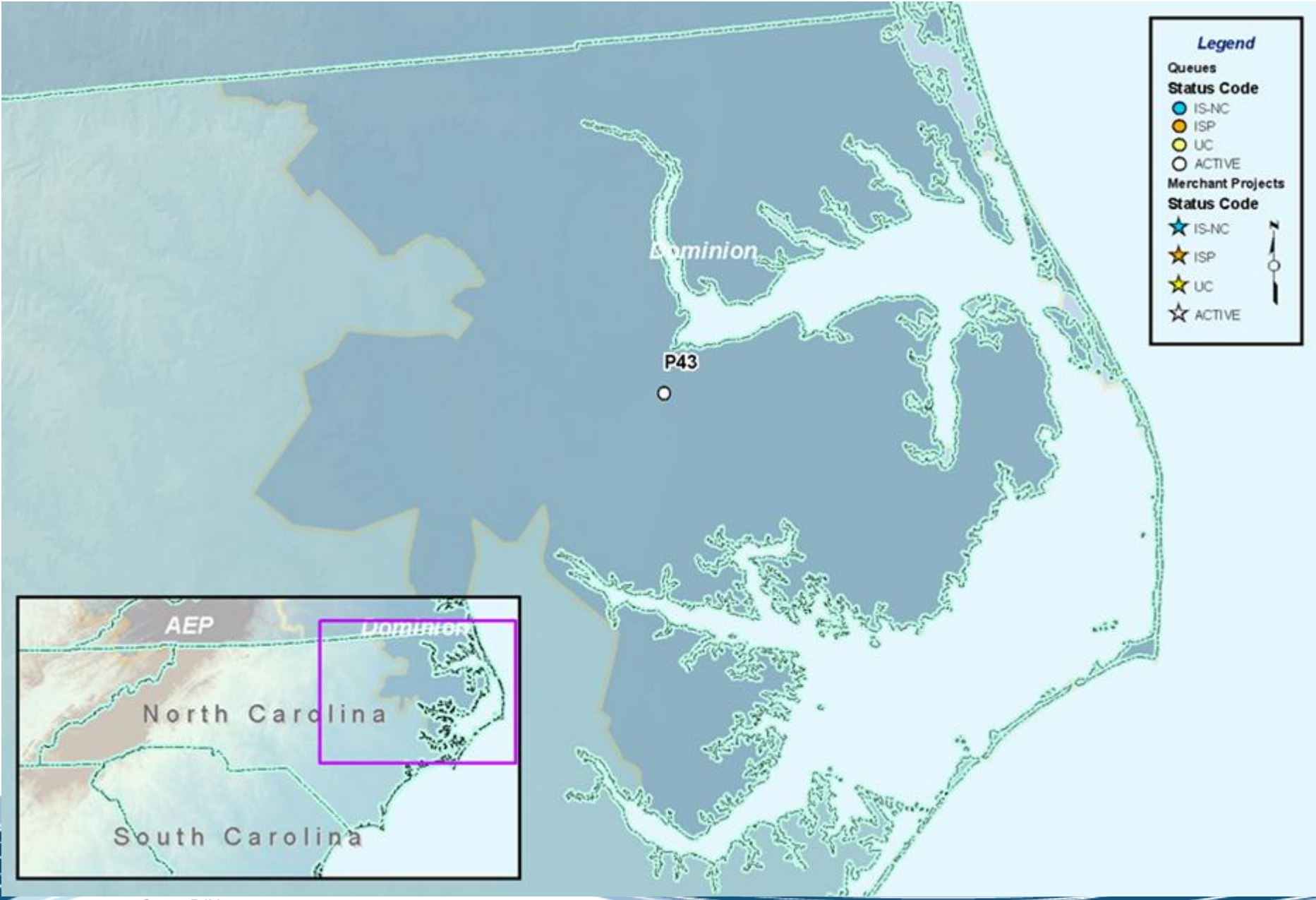
Not In-service previously reviewed at TEAC					
NU #	Description	TO	Status	Cost (\$M)	Queue allocation
n0372	Reconductor Englishtown-Monroe 34.5kV	JCPL	EP	\$ 1.200	G07_MTX1
n0373	Reconductor Wyckoff Street-Coke 34.5kV	JCPL	EP	\$ 0.960	G07_MTX1
n0374	Addition of a 230kV breaker at Whippany to alleviate a Morristown transformer overload	JCPL	EP	\$ 0.394	G07_MTX1
n0392	Add 50MVAR cap at Brunswick 230kV substation	PSEG	EP	\$ 2.200	G07_MTX1
n0426	Add 50MVAR capacitor at West Orange 138kV substation	PSEG	EP	\$ 1.700	G07_MTX1

Not In-service previously reviewed at TEAC

NU #	Description	TO	Status	Cost (\$M)	Queue allocation
n0433	Tap Tosco-Warinanco transmission line	PSEG	EP	\$ 0.975	G22_MTX5
n0434	Tosco protective relaying	PSEG	EP	\$ 0.075	G22_MTX5
n0435	Warinanco protective relaying	PSEG	EP	\$ 0.075	G22_MTX5
n0436	OPGW fiber from Tosco to G22 to Warinanco	PSEG	EP	\$ 0.075	G22_MTX5
n0437.1	Support VFT 230kV switchyard installation and testing	PSEG	EP	\$ -	G22_MTX5
n0471	Upgrade Lakehurst Substation System Protection	JCPL	No ISA	\$ 0.175	O20
n0472	Upgrade Lakehurst Substation Voltage Control	JCPL	No ISA	\$ 0.050	O20

North Carolina





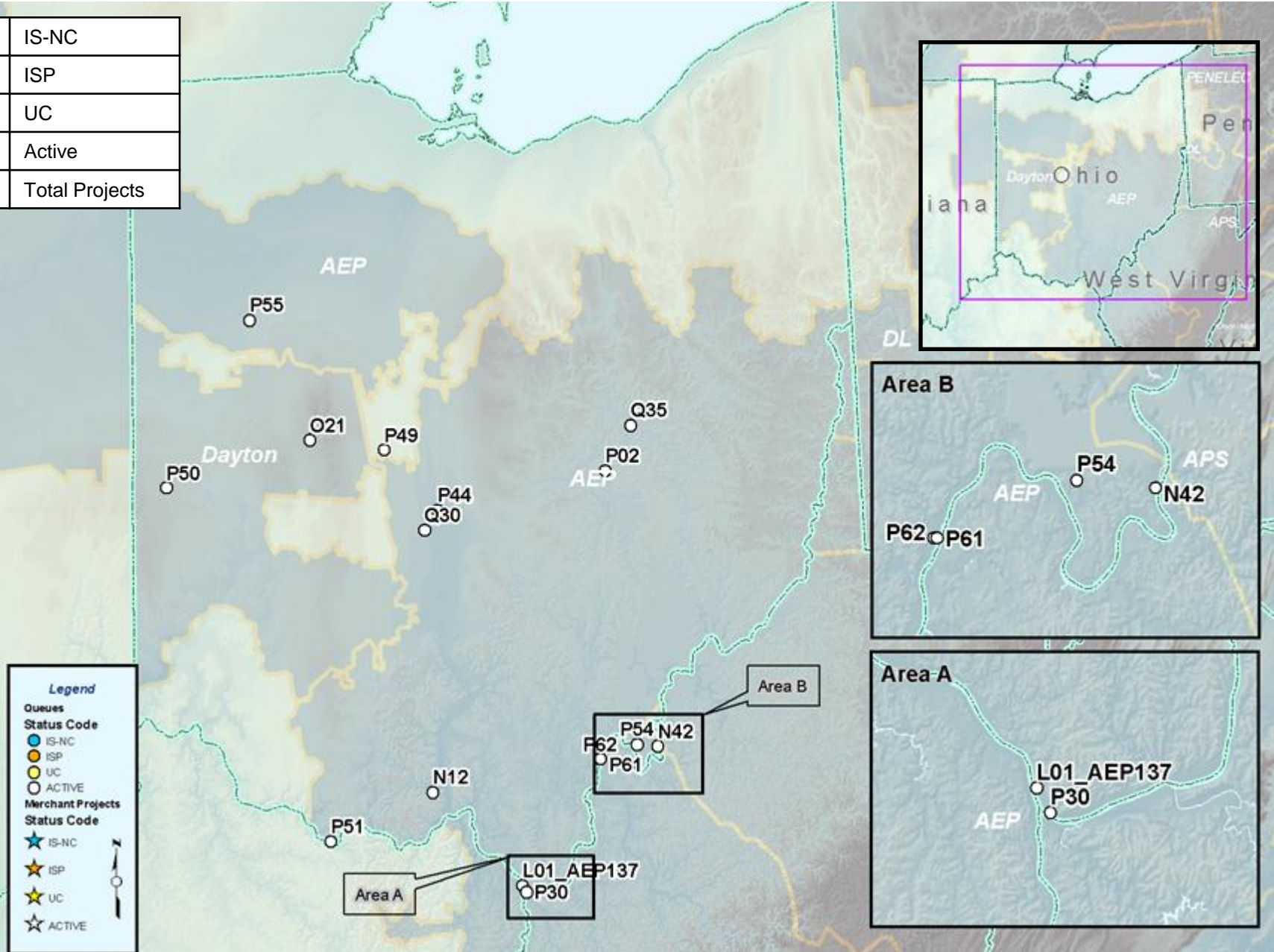
Queue Projects not fully In-Service							
Generation							
Queue	Project Name	TO	MW	MWC	In-Service	Fuel	Status
P43	Trowbridge 115kV	Dominion	62.5	62.5	12/31/2006	Wood	ACTIVE

Not In-service previously reviewed at TEAC						
Upgrade #	Description	TO	PJM Required In-Service	Status	Percent complete	
b0309	Install SPS at Earleys 115 kV	Dominion	6/1/2010	EP		
b0325	Install 2nd Everetts 230/115 kV transformer	Dominion	6/1/2011	EP		
b0342	Replace Trowbridge 230/115 kV transformer	Dominion	6/1/2010	EP		

Ohio



0	IS-NC
0	ISP
0	UC
17	Active
17	Total Projects



Queue Projects not fully In-Service							
Generation							
Queue	Project Name	TO	MW	MWC	In-Service	Fuel	Status
L01_AEP137	Bellefonte-N. Proctorville 138kV	AEP	165	165	1/1/2007	Biomass	ACTIVE
N12	North Haverhill 69 kV	AEP	75		1/1/2007	Coal	ACTIVE
N42	Sporn-Waterford 345kV	AEP	600	600	5/1/2010	Coal	ACTIVE
O21	Liberty 69kV	Dayton	48	9.6	12/15/2006	Wind	ACTIVE
P02	Ohio Central 138kV	AEP	550	550	6/1/2007	Natural Gas	ACTIVE
P30	Bellefonte - N. Proctorville 138kV	AEP	20	20	10/31/2007	BioMass	ACTIVE
P44	City of Columbus	AEP	7	7	9/1/2006	Diesel	ACTIVE
P49	Adkins 345kV	Dayton	9	9	6/1/2006	Natural Gas	ACTIVE
P50	Greenville 69kV	Dayton	14	14	6/1/2006	Natural Gas	ACTIVE
P51	Stuart 345kV	Dayton	7	7	6/1/2006	Coal	ACTIVE

Queue Projects not fully In-Service							
Generation							
Queue	Project Name	TO	MW	MWC	In-Service	Fuel	Status
P54	Sporn - Waterford 345kV	AEP	1035	1035	5/1/2012	Coal	ACTIVE
P55	West Lima 138kV	AEP	600	600	10/1/2008	Coal	ACTIVE
P61	Gavin #1 765kV	AEP	20	20	5/1/2006	Coal	ACTIVE
P62	Gavin #2 765kV	AEP	20	20	5/1/2007	Coal	ACTIVE
Q30	City of Columbus	AEP	3		5/1/2001	Methane	ACTIVE
Q35	N. Coshocton 69kV	AEP	15		1/1/2000	Natural Gas	ACTIVE

Not In-service previously reviewed at TEAC					
Upgrade #	Description	TO	PJM Required In-Service	Status	Percent complete
b0112	Upgrade West Canton 138 kV bus and 1 mile of West Canton-Dale 138 kV line	AEP	6/1/2009	EP	
b0113	Install new 345/138 kV transformer at Roberts Station; Reconductor Bixby-LSII 138 kV line; Upgrade 138 kV breakers at Bixby Substation	AEP	6/1/2009	UC	45%
b0114	Install new 345/138 kV transformer and reconfigure 138 kV system in Waverly-Sargents 138 kV area	AEP	6/1/2009	EP	

Not In-service previously reviewed at TEAC					
NU #	Description	TO	Status	Cost (\$M)	Queue allocation
n0429	New 138kV Switching Station	AEP	No ISA	\$ 2.435	L01_AEP137
n0431	Upgrade the primary and back-up carrier relaying facilities at North Proctorville 138kV Station	AEP	No ISA	\$ 0.383	L01_AEP137
n0432	Construct approximately 0.9 miles of double-circuit 138kV line to loop the Bellefonte-North Proctorville 138kV circuit into the New 138kV Switching Station	AEP	No ISA	\$ 1.217	L01_AEP137
n0470	Reconductor N. Haverhill-Ginat Creek and Ginat Creek-Franklin Furnace portions of the N. Haverhill-Millbrook Park-Argentum 69kV circuit; Replace 65 or 87 poles	AEP	No ISA	\$ 1.140	N12
n0473	Install a new 5-breaker 345kV ring bus substation for interconnection of the N42 Great Bend project	AEP	No ISA	\$ 9.700	N42
n0474	Construct the first 9 mile 345kV line from the N42 substation to the Sporn-Waterford 345kV line	AEP	No ISA	\$ 27.300	N42

Not In-service previously reviewed at TEAC					
NU #	Description	TO	Status	Cost (\$M)	Queue allocation
n0475	Right of way for first 9 mile 345kV circuit	AEP	No ISA	\$ 3.200	N42
n0476	Construct the second 9 mile 345kV line from the N42 substation to the Sporn-Waterford 345kV line	AEP	No ISA	\$ 27.300	N42
n0477	Right of way for the second 9 mile 345kV circuit	AEP	No ISA	\$ 3.200	N42
n0478	Remove a portion of the Sporn-Waterford 345kV line to create the new 345kV line exit from the N42 project	AEP	No ISA	\$ 1.100	N42
n0479	Reconductor approximately 1 mile of the Waterford-Muskingum 345kV circuit out of Waterford and change line risers at Muskingum	AEP	No ISA	\$ 1.200	N42
n0480	Replace the Kammer 765/345kV 1500MVA transformer with 3 single-phase 600 MVA transformers and one 600 MVA spare and replace other substation equipment as required	AEP	No ISA	\$ 18.000	N42

Pennsylvania



Legend

Queues

Status Code

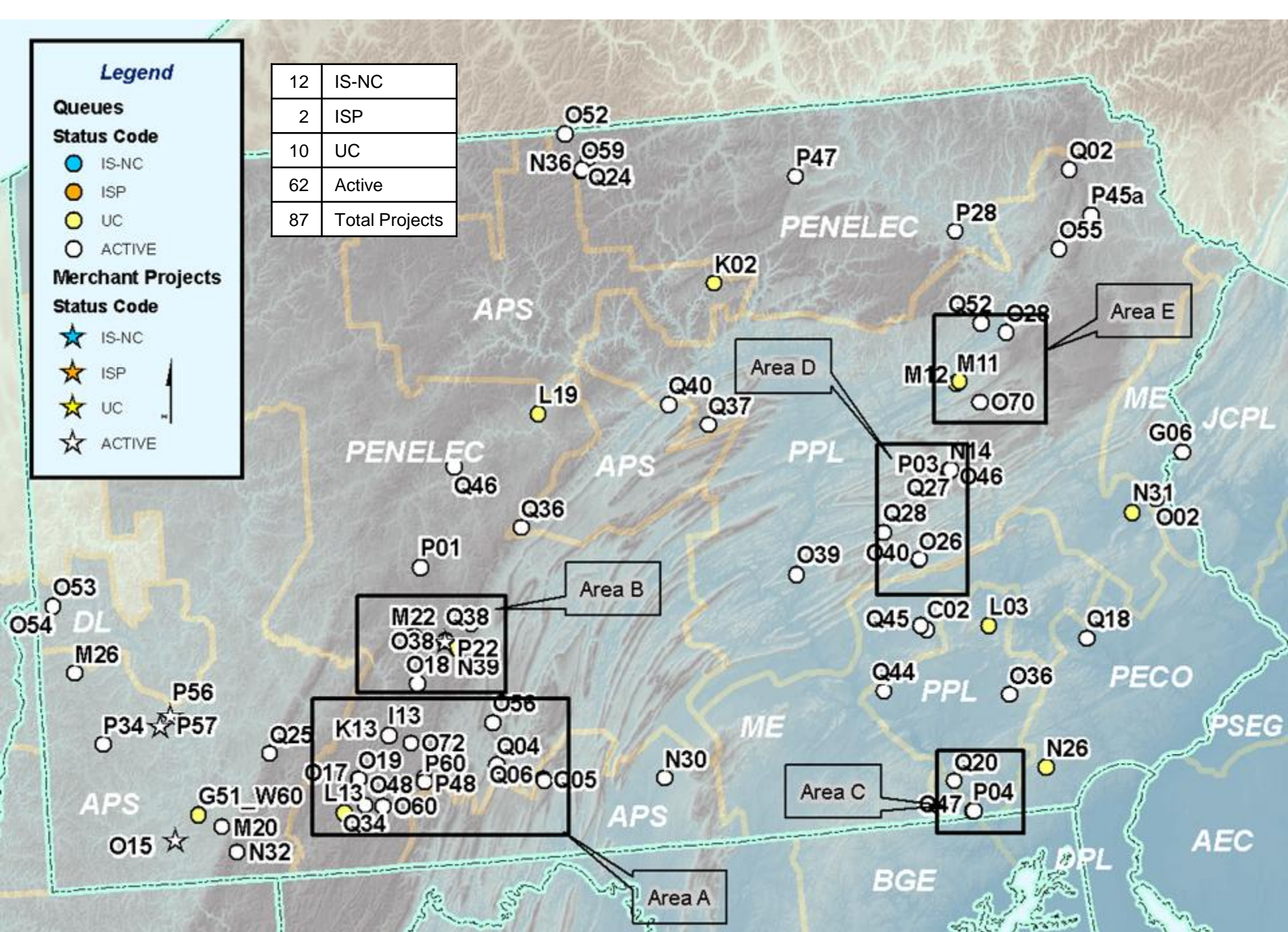
- IS-NC
- ISP
- UC
- ACTIVE

Merchant Projects

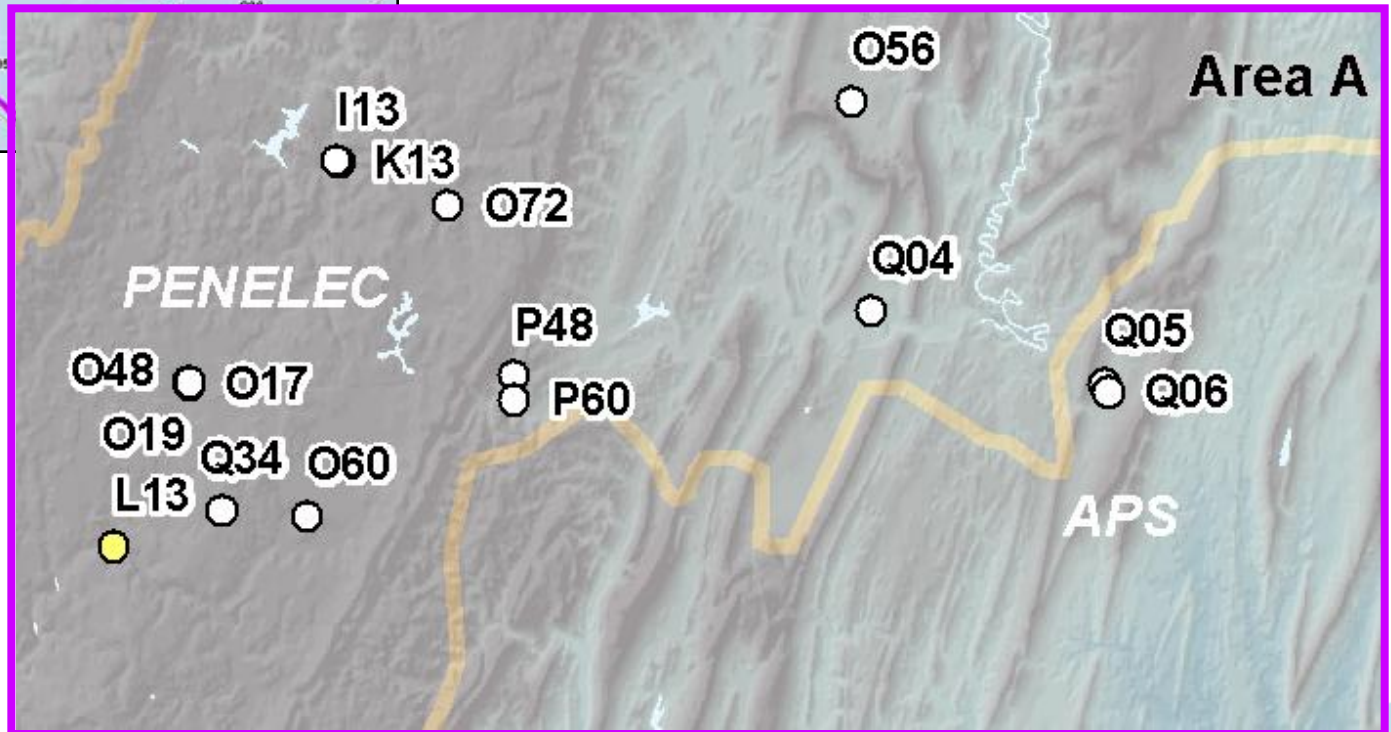
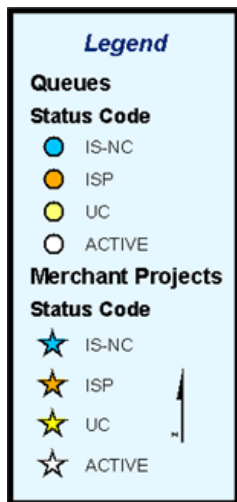
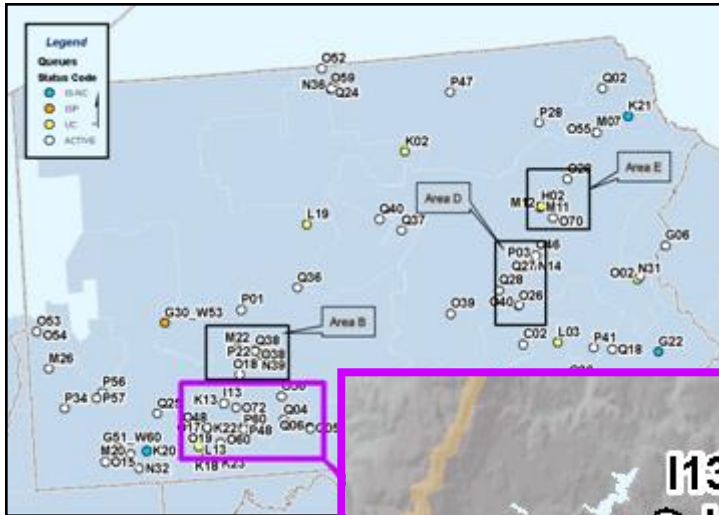
Status Code

- ★ IS-NC
- ★ ISP
- ★ UC
- ☆ ACTIVE

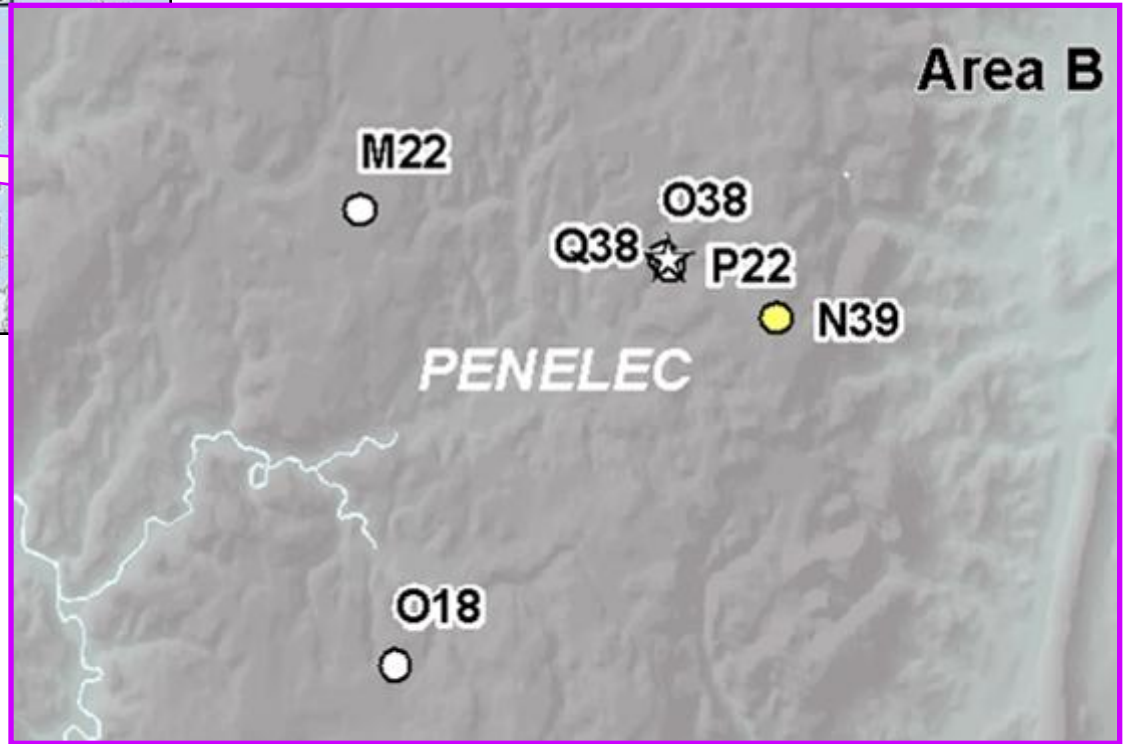
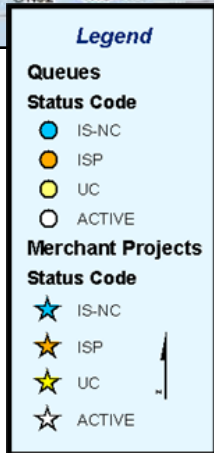
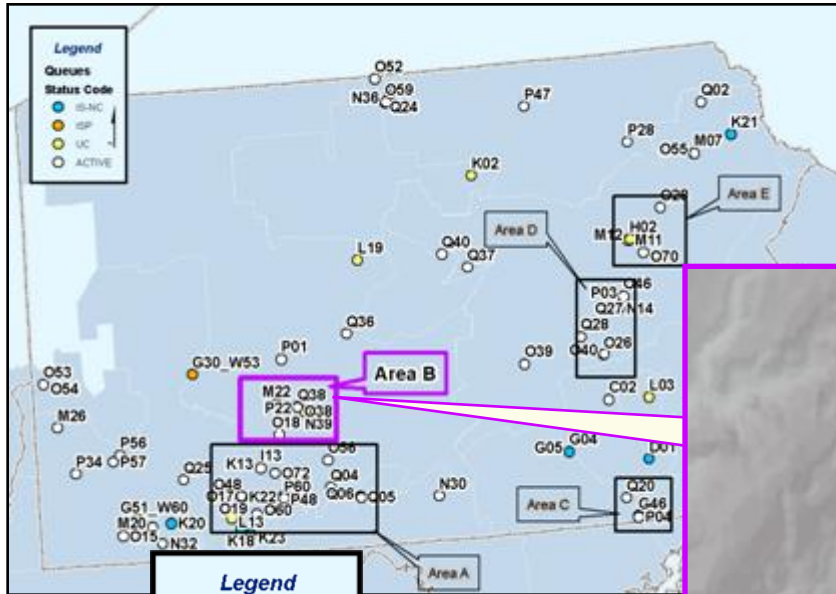
12	IS-NC
2	ISP
10	UC
62	Active
87	Total Projects

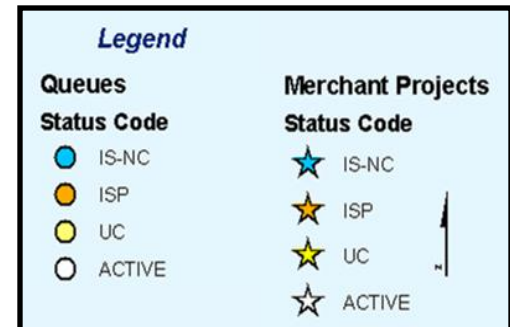
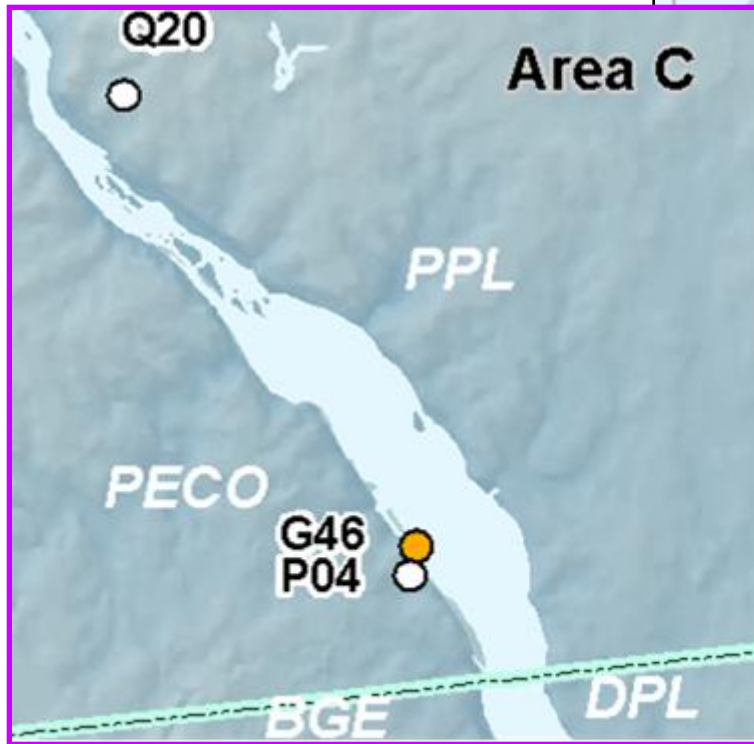
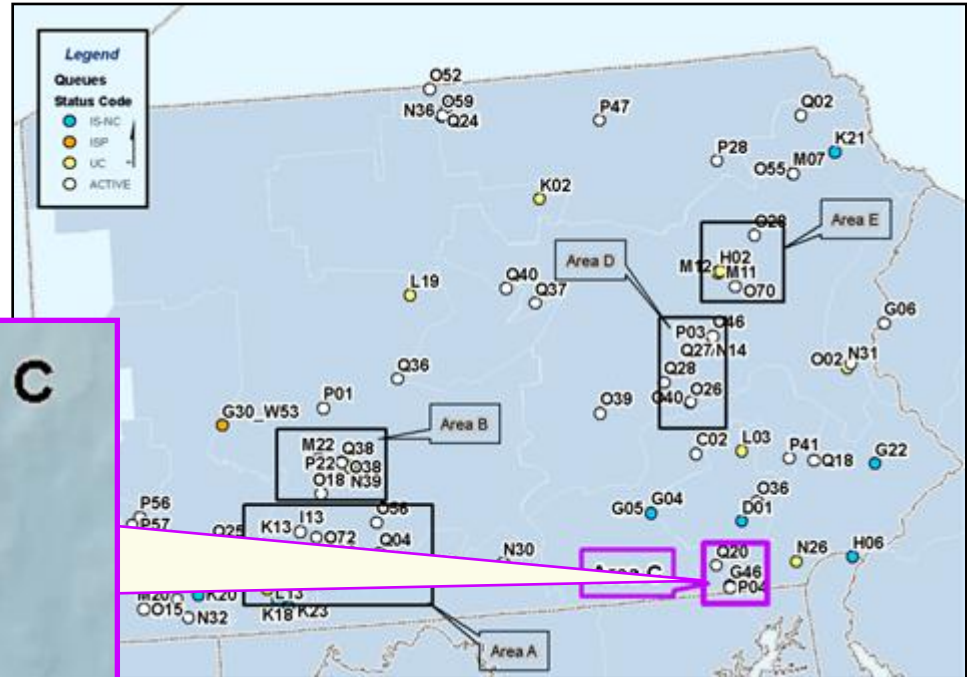


TEAC Meeting 7-11-2006



TEAC Meeting 7-11-2006





Queue Projects not fully In-Service							
Generation							
Queue	Project Name	TO	MW	MWC	In-Service	Fuel	Status
C02	South Lebanon 230kV	ME	47	47	1/1/2007	Natural Gas	ACTIVE
G06	Martins Creek #4	PPL	30	30	12/1/2007	Coal	ACTIVE
G46	Peach Bottom 500kV	PECO	70	70	10/1/2007	Nuclear	ISP
G51_W60	Hatfield Ferry 500 kV	APS	525	525	12/31/2008	Coal	UC
I13 / K13	Hooversville 115kV	PENELEC	30	6.8	9/30/2006	Wind	ACTIVE
K02	East Towanda-Moshannon 230kV	PENELEC	70	0	11/1/2007	Wind	UC
L03	Morgantown	PPL	0.8		5/31/2006	Methane	UC
L13	Rockwood	PENELEC	40	8	12/31/2006	Wind	UC
L19	Karthus 230kV	APS	290	290	6/30/2008	Coal	UC
M07	Peckville (Archbald)	PPL	6.3	6.3	3/15/2004	Natural Gas	IS-NC
M11	Susquehanna #1	PPL	111	111	5/31/2009	Nuclear	UC
M12	Susquehanna #2	PPL	107	107	5/31/2010	Nuclear	UC

Queue Projects not fully In-Service							
Generation							
Queue	Project Name	TO	MW	MWC	In-Service	Fuel	Status
M20	Chestnut Valley 25kV	APS	5	5	5/30/2006	Methane	ACTIVE
M22	Cambria Slope 115kV	PENELEC	125	125	2/1/2007	Coal	ACTIVE
M26	Champion	APS	272	300	5/31/2008	Coal	ACTIVE
N14	Frackville-Hauto #3 69kV	PPL	24	4.8	6/1/2006	Wind	ACTIVE
N26	Daleville	PECO	1.6	1.6	3/31/2006	Methane	UC
N30	Grand Point 12kV	APS	5		12/31/2006	Methane	ACTIVE
N31	Freemansburg 69kV	PPL	5		12/1/2007	Methane	UC
N32	Gans 138kV	APS	60	12	12/1/2006	Wind	ACTIVE
N36	Gold-Sabinsville 115kV	PENELEC	50	10	11/1/2006	Wind	ACTIVE
N39	Johnstown-Altoona 230kV	PENELEC	80	16	11/1/2006	Wind	UC
O02	Glendon 34.5kV	ME	3.2	3.2	12/31/2006	Methane	ACTIVE

Queue Projects not fully In-Service							
Generation							
Queue	Project Name	TO	MW	MWC	In-Service	Fuel	Status
O17	Somerset-Allegheny 115kV	PENELEC	65	13	7/1/2006	Wind	ACTIVE
O18	Salix-Claysburg (Krayn) 115kV	PENELEC	85	13	1/9/2007	Wind	ACTIVE
O19	Somerset 115kV	PENELEC	33	6.6	12/16/2006	Wind	ACTIVE
O26	Pine Grove 69kV	PPL	8	8	1/1/2007	Diesel	ACTIVE
O28	Jenkins-Harwood #2 69kV	PPL	85	17	9/30/2006	Wind	ACTIVE
O36	Honey Brook 12kV	PPL	1.6		12/1/2006	Methane	ACTIVE
O38	Johnstown-Altoona 230kV	PENELEC	50	10	12/15/2006	Wind	ACTIVE
O39	Sunbury - Dauphin 69kV	PPL	56	11.2	12/15/2007	Wind	ACTIVE
O40	Pine Grove - Frailey 69kV	PPL	44	8.8	12/15/2007	Wind	ACTIVE
O46	Frackville-Hauto #3 69kV	PPL	2	0.4	12/1/2007	Wind	ACTIVE
O48	Hays Mill 23kV	PENELEC	36	7.2	12/31/2006	Wind	ACTIVE

Queue Projects not fully In-Service							
Generation							
Queue	Project Name	TO	MW	MWC	In-Service	Fuel	Status
O52	Gold-Potter Co 115kV	PENELEC	100	20	11/1/2007	Wind	ACTIVE
O53	Beaver Valley #1	DL	81	81	9/15/2006	Nuclear	ACTIVE
O54	Beaver Valley #2	DL	77	77	10/23/2006	Nuclear	ACTIVE
O55	Peckville 69kV	PPL	9	9	1/1/2007	Methane	ACTIVE
O56	Osterburg East 115kV	PENELEC	125	25	12/31/2007	Wind	ACTIVE
O59	Gold 115kV	PENELEC	99	19.8	12/31/2007	Wind	ACTIVE
O60	Berlin 23 kV	PENELEC	5.4	1.08	7/15/2006	Wind	ACTIVE
O70	Susquehanna - Harwood 230kV	PPL	124	24.8	12/15/2007	Wind	ACTIVE
O72	Hooversville-Central City	PENELEC	60	12	11/30/2007	Wind	ACTIVE
P01	Westover-Madera 115kV	PENELEC	100	20	10/31/2007	Wind	ACTIVE
P03	Frackville-Hauto #3	PPL	1.3	0.26	12/31/2007	Wind	UC

Queue Projects not fully In-Service							
Generation							
Queue	Project Name	TO	MW	MWC	In-Service	Fuel	Status
P04	Peach Bottom 500kV	PECO	550	550	6/1/2008	Natural Gas	ACTIVE
P22	Johnstown Altoona 230kV	PENELEC	50	10	7/15/2007	Wind	ACTIVE
P28	Mehoopany 115kV	PENELEC	150	30	11/1/2007	Wind	ACTIVE
P34	Washington Landfill	APS	6.4	6.4	12/31/2006	BioMass	ACTIVE
P45A	E. Carbondale - Lackawanna 69kV	PPL / PENELEC	120	24	12/1/2009	Wind	ACTIVE
P47	Mansfield - S. Troy 115kV	PENELEC	100	20	12/31/2007	Wind	ACTIVE
P48	Bedford North - Allegheny 115kV	PENELEC	120	24	12/15/2007	Wind	ACTIVE
P60	New Baltimore	PENELEC	150	30	9/1/2007	Wind	ACTIVE
Q02	Thompson 115kV	PENELEC	80	16	12/31/2008	Wind	ACTIVE
Q04	Snake Spring 115kV	PENELEC	140	28	9/30/2008	Wind	ACTIVE
Q05	Emmaville Mountain	PENELEC	18	3.6	9/30/2008	Wind	ACTIVE

Queue Projects not fully In-Service							
Generation							
Queue	Project Name	TO	MW	MWC	In-Service	Fuel	Status
Q06	Breezewood	PENELEC	18	3.6	9/30/2008	Wind	ACTIVE
Q18	Moser 34.5kV	PECO	5	5	1/1/1989	Methane	ACTIVE
Q20	Holtwood	PPL	140	140	10/30/2010	Hydro	ACTIVE
Q24	Gold-Sabinsville 115kV	PENELEC	101	20.2	11/30/2008	Wind	ACTIVE
Q25	Donegal-Iron City 138kV	APS	80	16	12/15/2008	Wind	ACTIVE
Q27	Frackville-Shenandoah 69kV	PPL	100	20	12/31/2007	Wind	ACTIVE
Q28	Eldred-Frackville 230kV	PPL	220	44	12/31/2008	Wind	ACTIVE
Q34	Garrett 115kV	PENELEC	100	20	11/30/2008	Wind	ACTIVE
Q36	Tyrone N. - Philipsburg 115kV	PENELEC	80	16	12/31/2008	Wind	ACTIVE
Q37	Loganton 12kV	PPL	0.02	0	6/16/2006	BioMass	ACTIVE
Q40	Renovo Lock Haven	PPL	40	8	6/29/2006	Wind	ACTIVE

Queue Projects not fully In-Service							
Generation							
Queue	Project Name	TO	MW	MWC	In-Service	Fuel	Status
Q44	Elizabethtown	PPL	0.03	0	7/1/2006	Natural Gas	ACTIVE
Q45	North Lebanon 13.2kV	ME	3.2	3.2	6/1/2007	Methane	ACTIVE
Q46	Curwensville 23kV	PENELEC	10	0	1/1/2008	Coal	ACTIVE
Q47	Peach Bottom	PECO	140	140	10/31/2012	Nuclear	ACTIVE
Q52	Hunlock Creek	UGI	300	300	6/15/2011	Coal	ACTIVE
Q53	Summit-West Fall 115kV	PENELEC	100	20	12/15/2008	Wind	ACTIVE
Merchant							
O15	Black Oak - Hatfield Wave Trap	APS				AC	ACTIVE
P56	Elrama-Mitchell 138kV	DL			6/1/2007	AC	ACTIVE
P57	Charleroi-Mitchell 138kV	APS			6/1/2007	AC	ACTIVE
Q38	C2 Tap - Mt. Union 46kV	PENELEC		0	12/15/2006	AC	ACTIVE

Not In-service previously reviewed at TEAC					
Upgrade #	Description	TO	PJM Required In-Service	Status	Percent complete
b0069	Replace disconnect switch at Glory/Dixonville	PENELEC	6/1/2008	EP	
b0074	Rebuild 12 miles of S Akron-Berks to double circuit, looping Met Ed's S Lebanon-S Reading line into Berks replace of S.Reading 230 KV breaker 107252.	PPL	6/1/2008	EP	
b0171.1	Replace two 500 kV circuit breakers and two wave traps at Elroy substation to increase rating of Elroy - Hosensack 500kV	PECO	6/1/2008	EP	
b0171.2	Replace wavetrap at Hosensack 500kV substation to increase rating of Elroy - Hosensack 500kV	PPL	6/1/2008	EP	
b0172.1	Replace wave trap at Alburdis 500kV substation	PPL	6/1/2008	EP	
b0180	Replace Whitpain 230kV circuit breaker #165	PECO	6/1/2006	EP	20%
b0181	Replace Whitpain 230kV circuit breaker #J105	PECO	6/1/2006	EP	20%
b0182	Upgrade Plymouth Meeting 230kV circuit breaker #125	PECO	6/1/2006	EP	20%
b0206	Install 161Mvar capacitor at Planebrook 230kV substation	PECO	6/1/2008	EP	
b0207	Install 161Mvar capacitor at Newlinville 230kV substation	PECO	6/1/2008	EP	
b0208	Install 161Mvar capacitor Heaton 230kV substation	PECO	6/1/2008	EP	

Not In-service previously reviewed at TEAC					
Upgrade #	Description	TO	PJM Required In-Service	Status	Percent complete
b0209	Install 2% series reactor at Chichester substation on the Chichester - Mickleton 230kV circuit	PECO	6/1/2008	EP	
b0215	Install 230kV series reactor and 2-100MVAR PLC switched capacitors at Hunterstown, install a protection scheme that trips the 230/115 kV transformer with the outage of Hunterstown-Jackson 230kV	ME	6/1/2008	EP	
b0253	Convert Pine Creek substation from 69kV to 138kV	DL	6/1/2009	UC	60%
b0254	Convert North substation from 69kV to 138kV	DL	6/1/2009	UC	30%
b0255	Convert Highland substation from 69kV to 138kV and Lines to Logans Ferry to 138kV	DL	6/1/2009	EP	10%
b0256.1	Convert Valley substation from 69kV to 138kV	DL	6/1/2009	EP	15%
b0256.2	Reconductor Valley-Phillips at 138kV	DL	6/1/2009	EP	
b0257.1	Convert Wilmerding substation from 69kV to 138kV	DL	6/1/2009	EP	10%
b0257.2	Convert Dravosburg-Wilmerding from 69kV to 138kV	DL	6/1/2009	UC	60%
b0258	Elrama replace 41 MVA 138/69kV transformer with a minimum 75 MVA	DL	6/1/2009	EP	
b0264	Upgrade Chichester - Delco Tap 230kV and the PECO portion of the Delco Tap - Mickleton 230kV circuit	PECO	6/1/2009	EP	

Not In-service previously reviewed at TEAC					
Upgrade #	Description	TO	PJM Required In-Service	Status	Percent complete
b0266	Replace two wave traps and ammeter at Peachbottom, and two wave traps and ammeter at Newlinville 230kV substations	PECO	6/1/2009	EP	
b0269	Install a new 500/230kV substation in PECO, and tap the high side to Elroy - Whitpain 500kV and the low side to North Wales - Perkiomen 230kV circuit	PECO	6/1/2010	EP	
b0269.1	Add a new 230 kV circuit between Whitpain and Heaton substations	PECO	6/1/2010	EP	
b0269.2	Reconductor the Whitpain1-Plymtg1 230kV circuit	PECO	6/1/2010	EP	
b0269.3	Convert the Heaton bus to a ring bus	PECO	6/1/2010	EP	
b0269.4	Reconductor the Heaton-Warminster 230kV circuit	PECO	6/1/2010	EP	
b0269.5	Reconductor Warminster-Buckingham 230kV circuit	PECO	6/1/2010	EP	
b0269.6	Add a new 500kV breaker at Whitpain between #3 transformer and 5029 line	PECO	6/1/2010	EP	
b0280.1	Install 161MVAR capacitor at Warrington 230 kV substation	PECO	6/1/2009	EP	
b0280.2	Install 161MVAR capacitor at Bradford 230 kV substation	PECO	6/1/2009	EP	
b0280.3	Install 28.8MVAR capacitor at Warrington 34kV substation	PECO	6/1/2009	EP	

Not In-service previously reviewed at TEAC					
Upgrade #	Description	TO	PJM Required In-Service	Status	Percent complete
b0280.4	Install 18MVAR capacitor at Waverly 13.8kV substation	PECO	6/1/2009	EP	
b0284.1	Build Airydale 500kV substation - Tap the Keystone - Juniata and Conemaugh - Juniata 500kV, connect the circuits with a breaker and half scheme, and install new 400 MVAR capacitor	PENELEC	6/1/2009	EP	
b0284.2	Replace two wave traps at Juniata 500kV - on the two Juniata - new Airydale 500kV sub	PPL	6/1/2009	EP	
b0284.3	Replace wave trap and upgrade a bus section at Keystone 500kV - on the Keystone - New Airydale 500kV sub	PENELEC	6/1/2009	EP	
b0285.1	Replace wave trap at Keystone 500kV - on the Keystone - Conemaugh 500kV	PENELEC	6/1/2010	EP	
b0285.2	Replace wave trap and relay at Conemaugh 500kV - on the Conemaugh - Keystone 500kV	PENELEC	6/1/2010	EP	
b0287	Install 600MVAR Dynamic Reactive Device at Whipain 500kV substation	PECO	6/1/2009	EP	
b0293.1	Replace wavetrap at the Martins Creek 230 kV bus	PPL	5/1/2011	EP	
b0293.2	Raise the operating temperature of the 2-1590 ACSR to 140C for the Martins Creek - Portland 230 kV circuit	PPL	5/1/2011	EP	
b0321	Install new Prexy 500kV substation and Prexy to 502 Junction 500kV circuit	APS	6/1/2010	EP	
b0347.1	Build new Mt. Storm - 502 Junction 500kV circuit	APS	6/1/2011	EP	

Not In-service previously reviewed at TEAC					
Upgrade #	Description	TO	PJM Required In-Service	Status	Percent complete
b0347.3	Build new 502 Junction 500kV substation	APS	6/1/2011	EP	
b0349	Upgrade Rolling Meadows-Gore Jct with new rating of 90 MVA (normal rating) and 125 MVA Emergency	PENELEC	5/1/2011	EP	
b0351	Reconductor Tunnel - Grays Ferry 230kV - new emergency rating of 1395 MVA, same impedance data	PECO	5/1/2011	EP	
b0352	Reconductor Tunnel - Parrish 230kV - new emergency rating of 1395 MVA, same impedance data	PECO	5/1/2011	EP	
b0353.1	Install 2% reactors on both lines from Eddystone - Llanerch	PECO	5/1/2011	EP	
b0353.2	Install identical second 230/138kV transformer in parallel with existing transformer at Plymouth Meeting	PECO	5/1/2011	EP	
b0354	Eddystone - Island Rd Upgrade line terminal equipment - new emergency rating of 1411 MVA, same impedance data	PECO	5/1/2011	EP	
b0355	Reconductor Master - North Philadelphia 230kV line, new rating would be 757N/757E MVA ACSS	PECO	5/1/2011	EP	
b0357	Reconductor Buckingham - Pleasant Valley 230kV; same impedance as existing line; ratings of 760MVA normal/882MVA emergency	PECO	5/1/2011	EP	
b0359	North Philadelphia - Waneeta 230kV reconductor same impedance as existing line; ratings of 760 MVA normal/882 MVA emergency	PECO	5/1/2011	EP	
b0361	Change tap of limiting CT at Morristown	PENELEC	5/1/2011	EP	

Not In-service previously reviewed at TEAC					
Upgrade #	Description	TO	PJM Required In-Service	Status	Percent complete
b0362	Change tap setting of limiting CT at Pohatcong	PENELEC	5/1/2011	EP	
b0363	Change tap setting of limiting CT at Windsor	PENELEC	5/1/2011	EP	
b0364	Change tap setting of CT at Cookstown	PENELEC	5/1/2011	EP	
b0365	Add a 50 MVAR, 230kV cap bank at Altoona 230kV	PENELEC	5/1/2011	EP	
b0369	Install 100 MVAR Dynamic Reactive Device at Airydale 500kV substation	PENELEC	5/1/2010	EP	
b0370	Install 500 MVAR Dynamic Reactive Device at Airydale 500kV substation	PENELEC	5/1/2011	EP	
b0376	Install 300MVAR capacitor at Conemaugh 500kV substation	PENELEC	6/1/2011	EP	
b0378	Replace 3000A disconnect switch at Alburdis 230kV end of Alburdis to Hosensack line	JCPL	6/1/2011	EP	

Not In-service previously reviewed at TEAC					
NU #	Description	TO	Status	Cost (\$M)	Queue allocation
n0341	113 New 115KV substation with two circuit breaker, one 115 KV switch and associated bus conductor	PENELEC	No ISA	\$ 1.330	I13
n0342	One-Span loop of the 115KV transmission line into Hooversville substation	PENELEC	No ISA	\$ 0.070	I13
n0343	Relay Protection and control modifications at Hooversville 115 KV substation	PENELEC	No ISA	\$ 0.230	I13
n0381.1	Support Laurel Hill 230kV switchyard interconnection	PENELEC	EP	\$ 1.800	K02
n0381.2	Grover 230kV substation relay & carrier upgrades	PENELEC	EP	\$ 0.065	K02
n0381.3	Chapman 230kV substation relay & carrier upgrades	PPL	EP	\$ 0.015	K02
n0382	East Towanda 230kV substation relay & carrier upgrades	PENELEC	EP	\$ 0.135	K02

Not In-service previously reviewed at TEAC					
NU #	Description	TO	Status	Cost (\$M)	Queue allocation
n0383	Moshannon 230kV substation relay & carrier upgrades	AP	EP	\$ 0.070	K02
n0397	Loop Rockwood-Arnold 115 KV line into new substation for L13 project	PENELEC	EP	\$ -	L13
n0428	Rerate the Frackville - Gilberton 69kV circuit from 140 degree C to 150 degree C; Reconnection Wheelabrator NUG from Hauto-Frackville #3 to Frackville-Gilberton as well as uprating the line	PPL	No ISA		N14
n0438.1	Karthus 230kV switchyard and transmission tap	AP	EP	\$ 2.946	L19
n0438.2	Upgrade relays at Moshannon substation	AP	EP	\$ 0.070	L19
n0438.3	Upgrade relays at Milesburg substation	AP	EP	\$ 0.070	L19
n0447	Upgrade the Wylie Ridge-Smith 138kV line	AP	No ISA	\$ 0.485	M26

Not In-service previously reviewed at TEAC					
NU #	Description	TO	Status	Cost (\$M)	Queue allocation
n0457	Cambria Slope - Bethlehem 33 46 kV ck 1	Sun Coke (PENELEC)	No ISA	\$ 0.030	M22
n0458	Bethlehem 33 - Loretto 46kV ck1	Sun Coke / PENELEC	No ISA	\$ 0.180	M22
n0459	Summit 2 - Sankertown 46kV	Sun Coke / PENELEC	No ISA	\$ 0.050	M22
n0460	Summit - Lilly 46kV	Sun Coke (PENELEC)	No ISA	\$ 0.320	M22
n0461	EH2 TAP - Eldorado 46kV ck1	Sun Coke (PENELEC)	No ISA	\$ 0.142	M22
n0462	EH2 TAP - EH3 TAP 46kV ck1	Sun Coke (PENELEC)	No ISA	\$ 0.035	M22
n0463	Summit - Wilmore Junction 115kV ck1	Sun Coke (PENELEC)	No ISA	\$ 1.870	M22

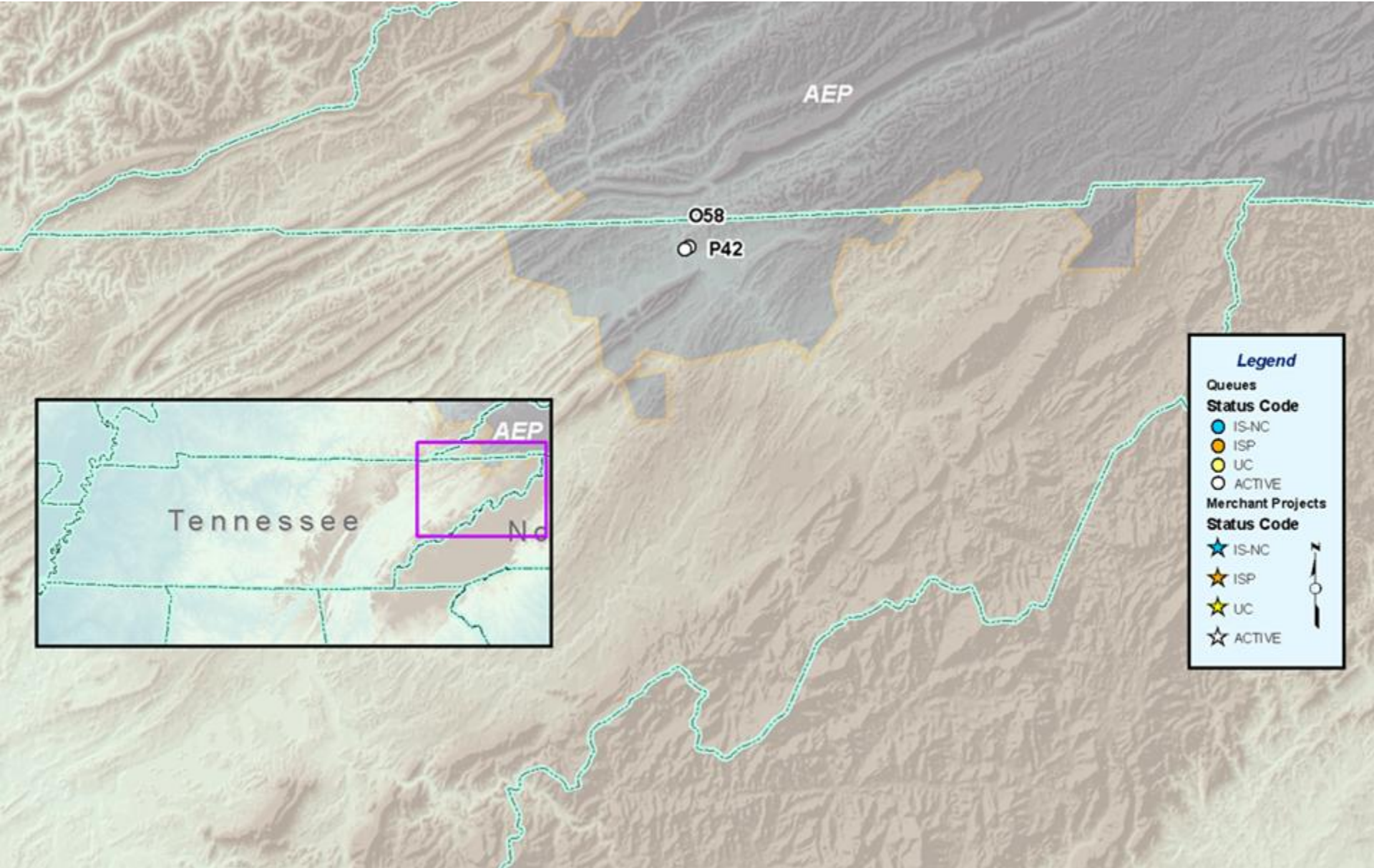
Not In-service previously reviewed at TEAC					
NU #	Description	TO	Status	Cost (\$M)	Queue allocation
n0464	Addition of fiber optic terminal equipment at Rockwood 115kV substation	PENELEC	EP	\$ 0.035	L13
n0465	Addition of fiber optic terminal equipment at Meyersdale North substation	PENELEC	EP	\$ 0.035	L13
n0466	Fiber optic line between Rockwood and Meyersdale North	PENELEC	EP	\$ 0.700	L13
n0467	New 230kV 3-breaker ring bus termination point at a new interconnection substation approximately 20 miles east of Johnstown Substation	PENELEC	EP	\$ 2.000	N39
n0468	Relay and control work at Johnstown Substation; Includes relays, carrier set, line trap and tuner.	PENELEC	EP	\$ 0.180	N39
n0469	Relay and control work at Altoona Substation; Includes relays, carrier set, line trap, tuner and review of relay settings.	PENELEC	EP	\$ 0.180	N39

Not In-service previously reviewed at TEAC					
NU #	Description	TO	Status	Cost (\$M)	Queue allocation
n0485	East Towanda-Moshannon 230kV transmission tap to Laurel Hill switchyard	PENELEC	EP		K02
n0486	Supports Browns Run 500kV switchyard interconnection	AP	EP		G51_W60
n0492	Install 57 MVAR 138kV capacitor	DQE	No ISA	\$ 1.000	O53
n0493	Install 53 MVAR 138kV capacitor	DQE	No ISA	\$ 1.000	O54
n0494	Reconductor 46kV Huntingdon - Warrior Ridge Tap	PENELEC	EP	\$ 0.585	N39
n0495	Construct 115kV ring bus	PENELEC	No ISA	\$ 1.800	N36
n0496	Replace Sabinsville 115 - 34.5kV #1 transformer	PENELEC	No ISA	\$ 1.200	N36
n0497	Install line protection at Potter	PENELEC	No ISA	\$ 0.180	N36
n0498	Install line protection at Niles Valley	PENELEC	No ISA	\$ 0.180	N36

Tennessee



TEAC Meeting 7-11-2006



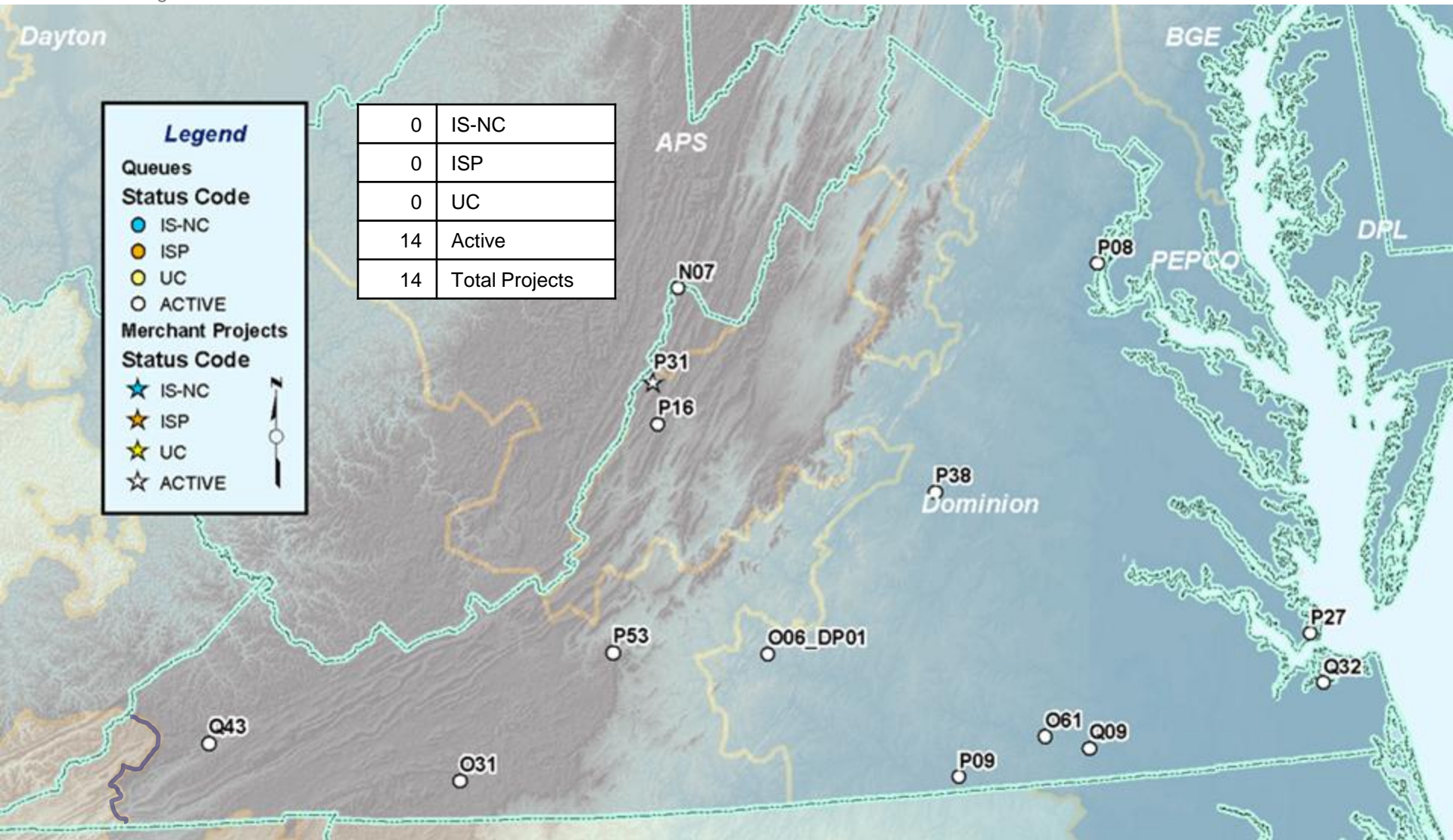
Queue Projects not fully In-Service								
Generation								
Queue	Project Name	TO	MW	MWC	In-Service	Fuel	Status	
O58	Tenn Eastman 138kV	AEP	75	75	6/1/2006	Coal	ACTIVE	
P42	West Kingsport 138kV	AEP	50	50	9/4/2006	BioMass	ACTIVE	

Note: No Baseline upgrades that are not in-service that were previously reviewed at TEAC

Virginia



TEAC Meeting 7-11-2006



Queue Projects not fully In-Service							
Generation							
Queue	Project Name	TO	MW	MWC	In-Service	Fuel	Status
N07	Monterey 69kV	AP	38	7.6	12/31/2007	Wind	ACTIVE
O06_DP01	Altavista 115kV	Dominion	4	4	6/1/2006	Wood	ACTIVE
O31	Fries 12kV	AEP	5.21	5.21	12/31/2006	Hydro	ACTIVE
O61	Lawrenceville 34.5kV	Dominion	8	8	1/31/2007	Methane	ACTIVE
P08	Possum Point	Dominion	600	600	5/1/2009	Natural Gas	ACTIVE
P09	Kerr Dam 115kV	Dominion	91	91	9/30/2008	Hydro	ACTIVE
P16	Bath County	Dominion	340	340	6/1/2009	Hydro	ACTIVE
P27	Winchester 34.5 kV	Dominion	13	13	12/31/2006	Methane	ACTIVE
P38	Bremo 230kV	Dominion	675	675	7/1/2010	Natural Gas	ACTIVE

Queue Projects not fully In-Service							
Generation							
Queue	Project Name	TO	MW	MWC	In-Service	Fuel	Status
P53	Bent Mtn. 138kV	AEP	81	16.2	12/31/2008	Wind	ACTIVE
Q09	Emporia	Dominion	2.5	2.5	4/1/2006	Hydro	ACTIVE
Q32	Gosport 115kV	Dominion	30	30	7/1/2006	BioMass	ACTIVE
Q43	Clinch River 138kV	AEP	534	534	3/1/2012	Coal	ACTIVE
Merchant							
P31	Bath County	Dominion			6/1/2006	SPS	ACTIVE

Not In-service previously reviewed at TEAC					
Upgrade #	Description	TO	PJM Required In-Service	Status	Percent complete
b0226	Install 500/230kV transformer at Clifton and Clifton 230kV 150 MVAR capacitor	Dominion	6/30/2006	UC	80%
b0227	Install 500/230kV transformer at Bristers; build new 230kV Bristers - Gainesville circuit, upgrade two Loudoun - Brambleton circuits	Dominion	5/1/2009	EP	
b0227.1	Loudoun Sub. - upgrade 6-230kV breakers	Dominion	6/1/2009	EP	
b0230	Install fourth Meadowbrook 500/138kV transformer	APS	5/1/2008	EP	
b0231	Install Suffolk 500/230kV transformer, reconfigure Suffolk 500kV, reconfigure Yadkin 500kV, connect Septra - Fentress 500kV into Yadkin 500kV	Dominion	6/1/2009	EP	
b0231.1	Yadkin Sub. - upgrade 1-230kV breaker	Dominion	6/1/2009	EP	
b0232	Install 150 MVAR capacitor at Lynnhaven 230kV	Dominion	6/1/2009	EP	30%
b0233	Install 150 MVAR capacitor at Landstown	Dominion	6/1/2009	EP	10%
b0234	Install 150 MVAR capacitor at Greenwich 230kV	Dominion	6/1/2009	EP	
b0235	Install 150 MVAR capacitor Fentress 230kV	Dominion	6/1/2009	EP	
b0246	Rebuild of the Double Tollgate - Old Chapel 138kV line with 954 ACSR conductor	APS	6/1/2009	EP	1%

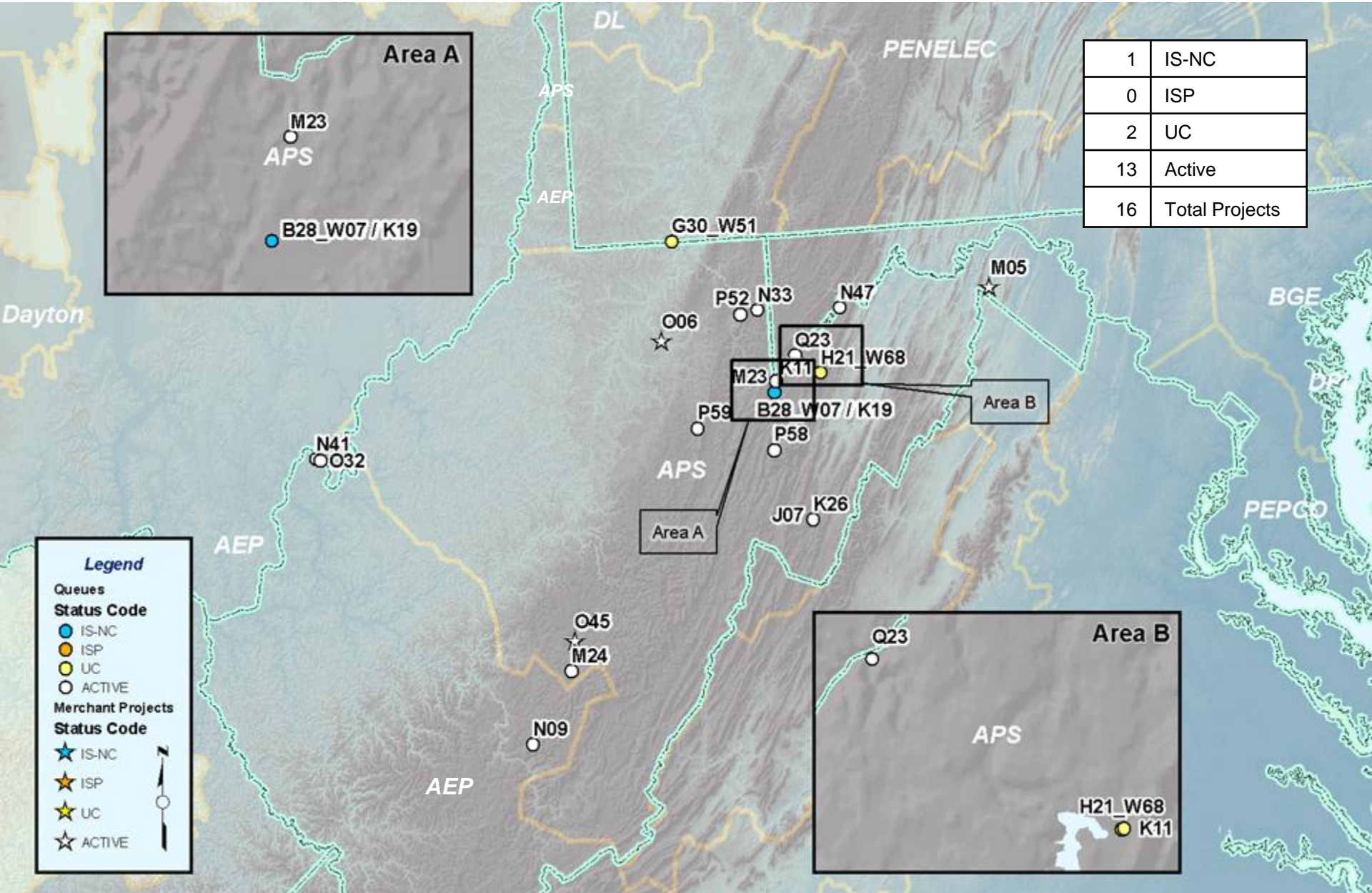
Not In-service previously reviewed at TEAC						
Upgrade #	Description	TO	PJM Required In-Service	Status	Percent complete	
b0307	Reconductor Endless Caverns - Mt. Jackson 115 kV	Dominion	6/1/2009	EP	10%	
b0308	Replace L breaker and switches at Endless Caverns 115 kV	Dominion	6/1/2009	EP		
b0310	Reconductor Club House-South Hill and Chase City- S Hill 115 kV	Dominion	6/1/2010	EP		
b0311	Reconductor Idywood to Arlington 230 kV	Dominion	6/1/2010	EP	4%	
b0312	Reconductor Gallows to Ox 230 kV	Dominion	6/1/2010	EP		
b0323	Replace the North Shenandoah 138/115kV transformer	APS	6/1/2011	EP		
b0326	Uprate/resag Remington-Brandywine-Culppr 115kV	Dominion	6/1/2011	EP		
b0327	Build 2nd Harrisonburg-Valley 230 kV	Dominion	6/1/2010	EP	10%	
b0328.1	Build new Meadowbrook - Loudon 500kV circuit (30 of 50 miles)	Dominion	6/1/2011	EP	10%	
b0328.2	Build new Meadowbrook - Loudon 500kV circuit (20 of 50 miles)	APS	6/1/2011	EP		
b0328.4	Upgrade Loudon 500kV substation	Dominion	6/1/2011	EP		

Not In-service previously reviewed at TEAC					
Upgrade #	Description	TO	PJM Required In-Service	Status	Percent complete
b0329	Build Carson-Suffolk 500 kV line+Suffolk 500/230 #2 transformer+Suffolk-Fentress 230kV line	Dominion	6/1/2011	EP	10%
b0330	Crewe - Install 115kV breaker & shift load from line 158 to 98	Dominion	6/1/2011	EP	
b0331	Shell Bank - Whealton 115 kV(Upgrade/resag Line165)	Dominion	6/1/2011	EP	
b0332	Uprate/resag Chesapeake-Cradock 115 kV	Dominion	6/1/2011	EP	
b0333	Elmont - Replace wave trap on line #231	Dominion	6/1/2011	EP	
b0334	Uprate/resag IronBridge-Walmsley-Southwest 230 kV	Dominion	6/1/2011	EP	
b0335	Build Chase City-Clarksville 115 kV	Dominion	6/1/2011	EP	
b0336	Reconductor one span Chesapeake-Dozier 115 kV close to Dozier substation	Dominion	6/1/2011	EP	
b0337	Build Lexington 230kV ring bus	Dominion	6/1/2009	EP	
b0338	Replace Gordonsville 230/115 kV transformer for larger one	Dominion	6/1/2011	EP	
b0339	Install Breaker at Dooms 230 kV Sub	Dominion	6/1/2009	EP	

Not In-service previously reviewed at TEAC					
Upgrade #	Description	TO	PJM Required In-Service	Status	Percent complete
b0340	Reconductor on span Peninsula-Magruder 115 kV close to Magruder substation	Dominion	6/1/2010	EP	
b0347.2	Build new Mt. Storm - Meadowbrook 500kV circuit	APS	6/1/2011	EP	
b0347.4	Upgrade Meadowbrook 500kV substation	APS	6/1/2011	EP	
b0348	Upgrade Stonewall - Inwood 138kV with 954 ACSR conductor	APS	5/1/2010	EP	
b0375	Install 0.5% reactor on the Pleasant View - Dickerson 230kV circuit	PEPCO	6/1/2011	EP	
b0375	Install 0.5% reactor on the Pleasant View - Dickerson 230kV circuit	PEPCO	6/1/2011	EP	

West Virginia





Queue Projects not fully In-Service							
Generation							
Queue	Project Name	TO	MW	MWC	In-Service	Fuel	Status
G30_W51	Fort Martin 500 kV	APS	600	600	6/1/2008	Coal	UC
H21_W68 / K11	Greenland Gap 500kV	APS	300	60	9/30/2007	Wind	UC
J07 / K26	North Franklin 138kV	APS	200	40	11/1/2006	Wind	ACTIVE
B28_W07 / K19	Backbone Mountain 138kV	APS	90	18	6/1/2001	Wind	IS-NC
M23	Henry 138kV	APS	150	30	12/1/2006	Wind	ACTIVE
M24	Grassy Falls	APS	200	40	9/1/2006	Wind	ACTIVE
N09	Grassy Falls 138kV	APS	90	90	3/31/2008	Coal	ACTIVE
N33	Afton 138kV	APS	60	12	12/1/2006	Wind	ACTIVE
N41	Mountaineer 765kV	AEP	1200	1200	5/1/2010	Coal	ACTIVE

Queue Projects not fully In-Service							
Generation							
Queue	Project Name	TO	MW	MWC	In-Service	Fuel	Status
N47	Beryl 138kV	APS	135	27	11/1/2007	Wind	ACTIVE
O32	Mountaineer 765kV	AEP	25	25	6/1/2006	Coal	ACTIVE
P52	Albright 138kV	APS	80	16	12/31/2008	Wind	ACTIVE
P58	Canaan - Seneca 138kV	APS	150	30	12/1/2007	Wind	ACTIVE
P59	Belington 138kV	APS	125	25	12/31/2008	Wind	ACTIVE
Q23	Bayard	APS	19	3.8	3/31/2007	Wind	ACTIVE
Merchant							
M05	Black Oak - Bedington	APS			12/31/2005	AC	ACTIVE
O06	Ft. Martin Pruntytown	APS			2/28/2006	AC	ACTIVE
O45	Grassy Falls	APS	200	200	9/1/2006	AC	ACTIVE
P45B	Mt. Storm 500kV	Dominion				AC	ACTIVE

Not In-service previously reviewed at TEAC						
Upgrade #	Description	TO	PJM Required In-Service	Status	Percent complete	
b0318	Install a 765/138 kV transformer at Amos	AEP	6/1/2010	EP		
b0216	Black Oak Install -100/+525 MVAR dynamic reactive device	APS	6/1/2008	EP		
b0218	Install third Wylie Ridge 500/345kV transformer	APS	6/1/2007	EP	10%	
b0229	Install fourth Bedington 500/138kV transformer	APS	5/1/2009	EP		
b0245	Replacement of the existing 954 ACSR conductor on the Bedington - Nipetown 138kV line with high temperature / low sag conductor	APS	6/1/2009	EP	1%	
b0297	Install fourth Wylie Ridge 500/345kV transformer	APS	9/30/2007	EP	3%	
b0328.3	Upgrade Mt Storm 500kV substation	Dominion	6/1/2011	EP		
b0347.2	Build new Mt. Storm - Meadowbrook 500kV circuit	APS	6/1/2011	EP		
b0348	Upgrade Stonewall - Inwood 138kV with 954 ACSR conductor	APS	5/1/2010	EP		

Not In-service previously reviewed at TEAC						
NU #	Description	TO	Status	Cost (\$M)	Queue allocation	
n0391	Upgrade Williams 138kV bus	AP	No ISA	\$ 0.139	M23	
n0410	Install dual primary relay on the William-Albright 138 kV line	AP	No ISA	\$ 0.133	J07	
n0411	Install dual primary relay on the William-Loughs Lane 138 kV line	AP	No ISA	\$ 0.094	J07	
n0446	Upgrade the Grassy Falls 138kV bus	AP	No ISA	\$ 0.055	M24	
n0488	Mt Storm 500kV substation relay upgrades	Dominion	EP	\$ 0.114	H21_W68	
n0489	Support Greenland Gap 500kV switchyard interconnection	AP	EP	\$ 0.230	H21_W68	