

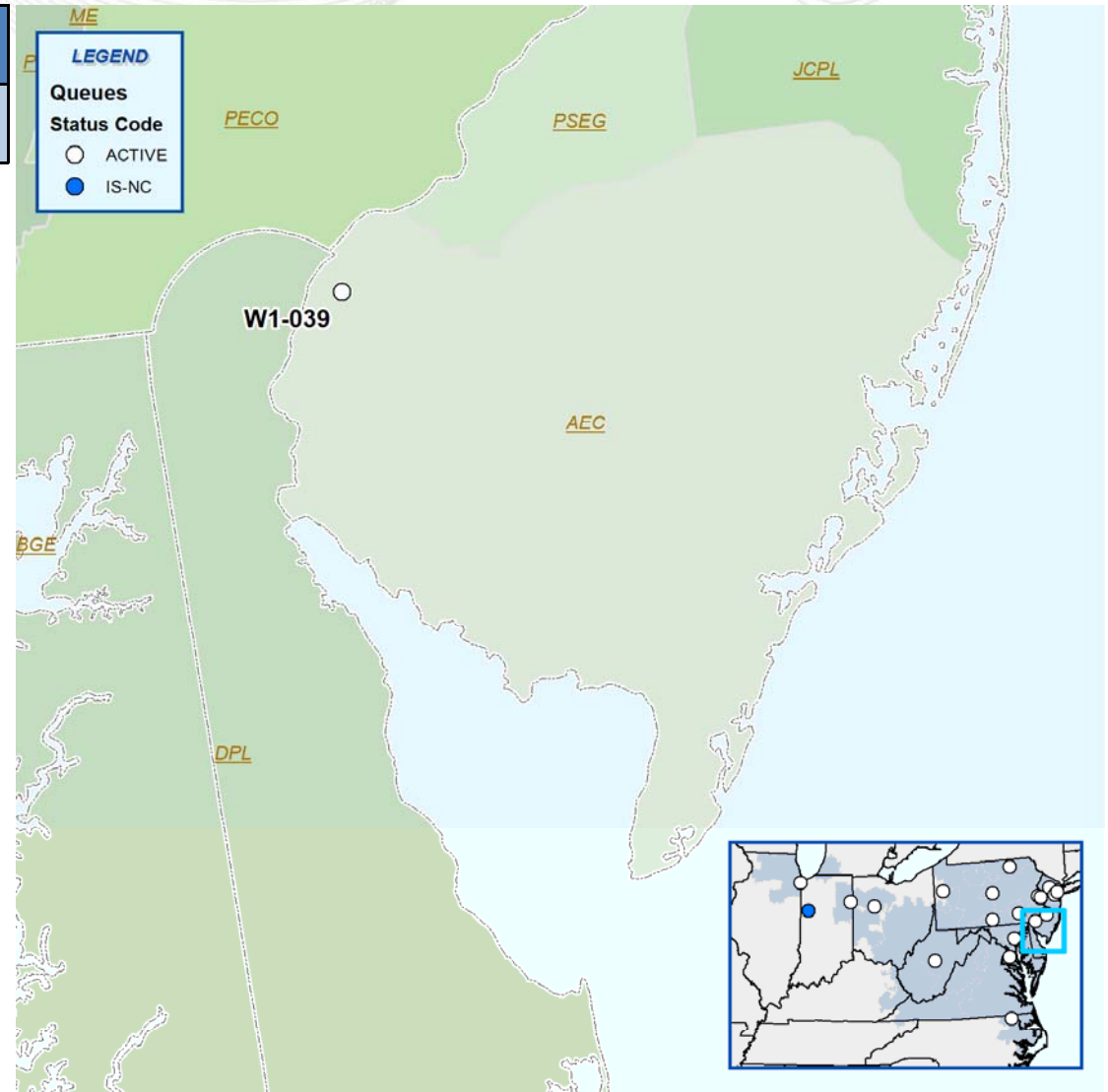


Interconnection Queue Update

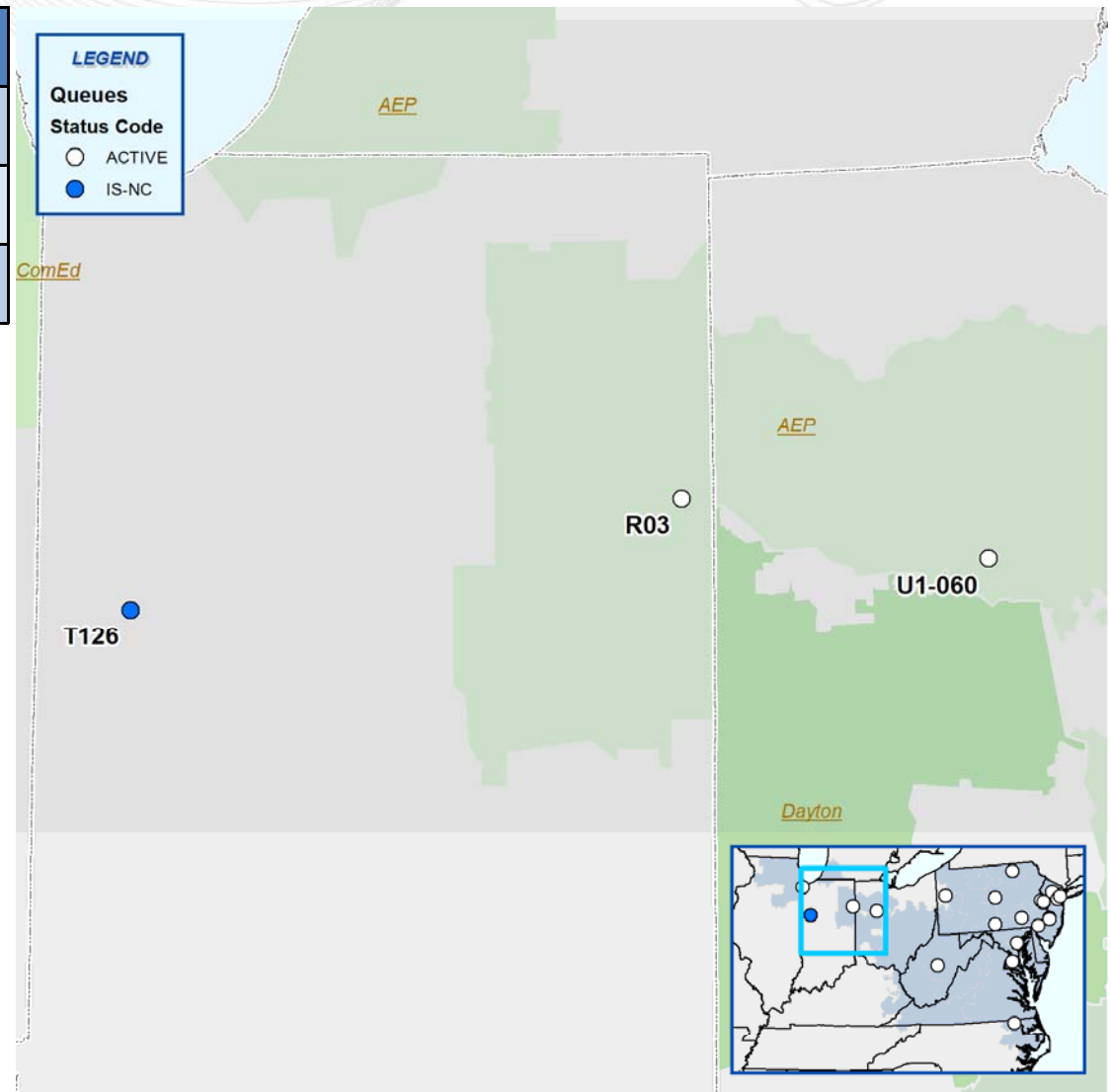
September 8, 2010

- Studies represented as issued from July 1, 2010 through August 27, 2010
- Some studies are re-tool studies
 - No new Network Upgrades identified for any Interconnection Request

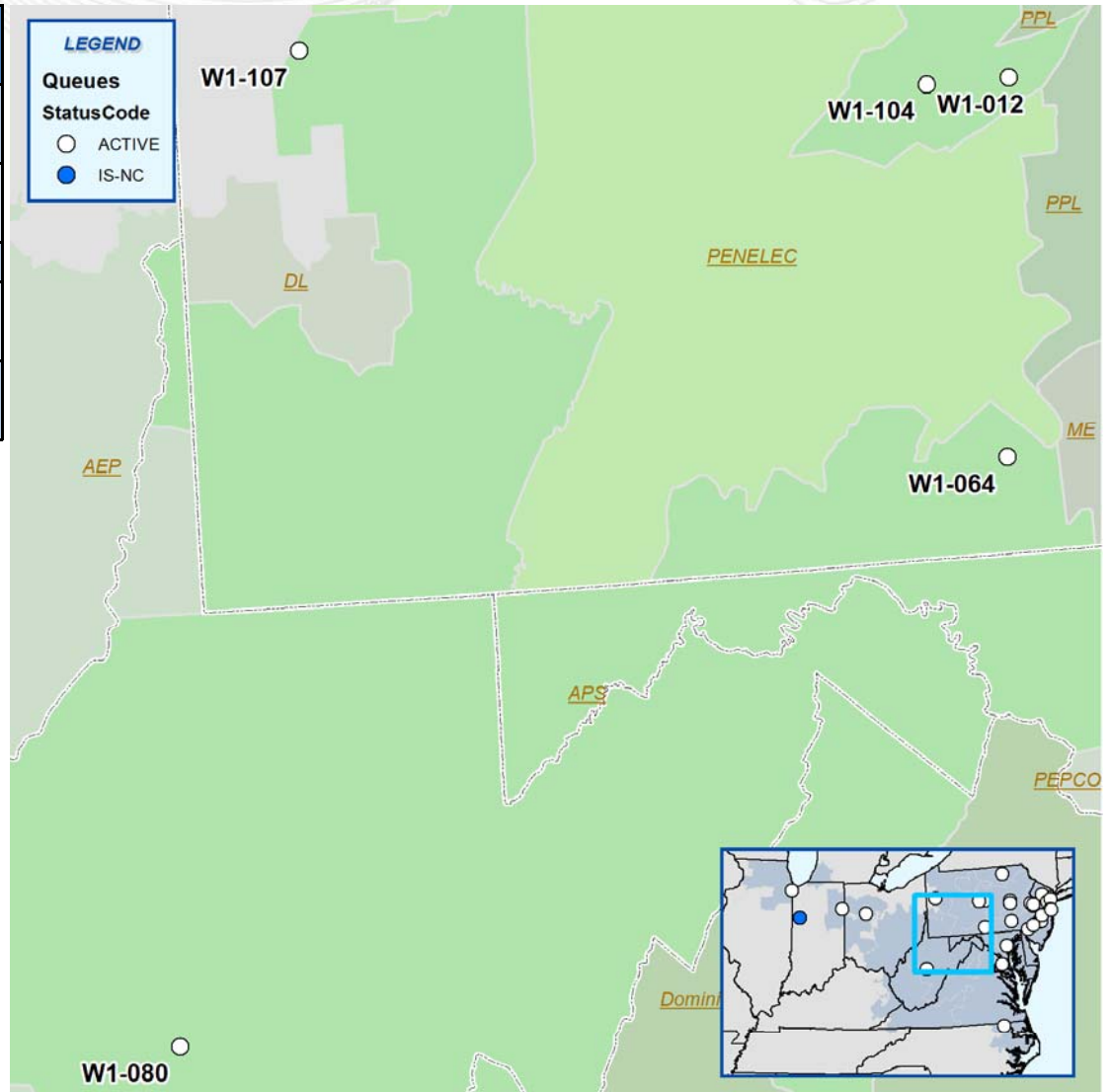
Queue Number	Project Name	MWC	MWE	Fuel Type
V3-017	Morgantown-Oak Grove	725	725	Natural Gas



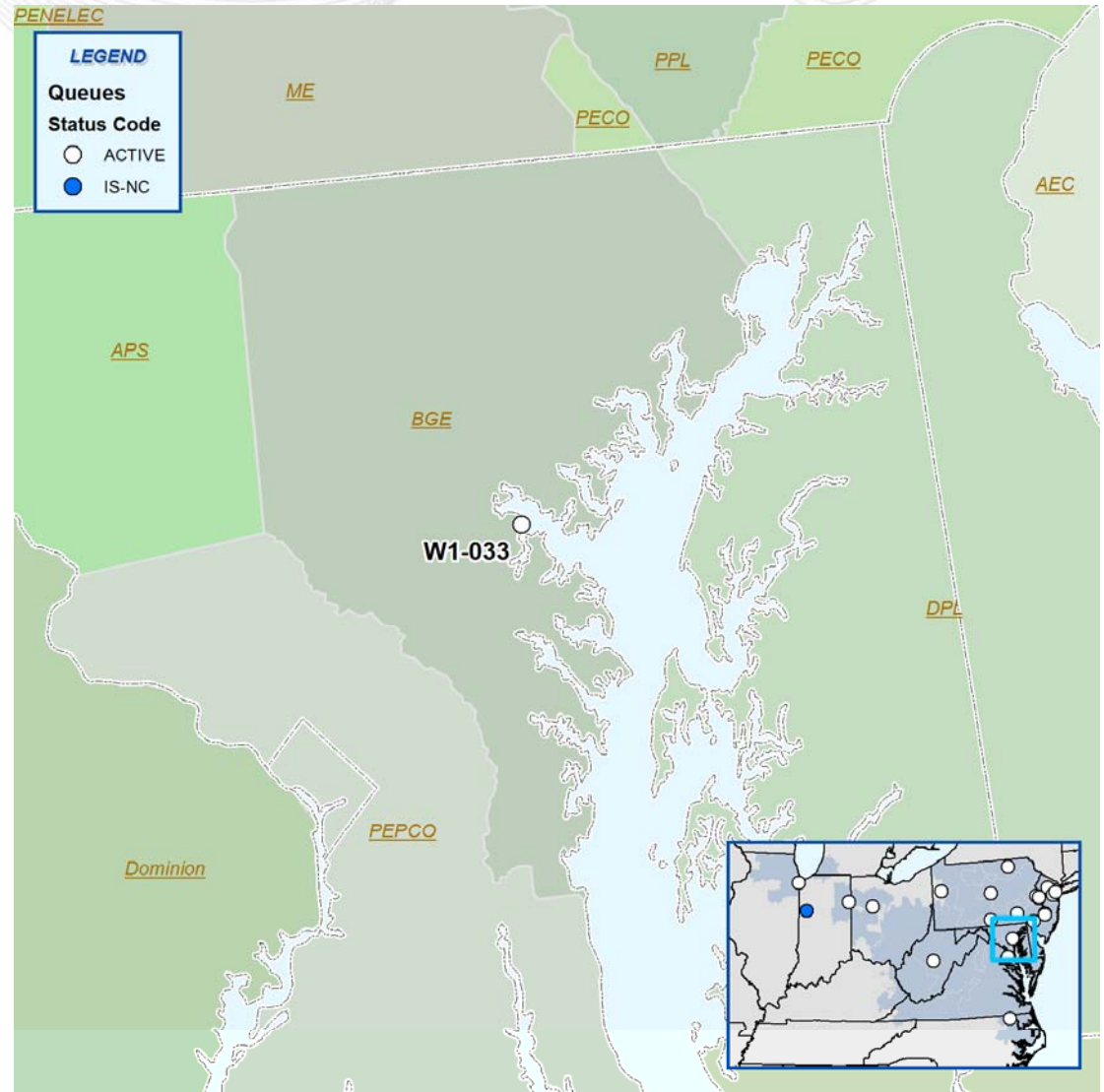
Queue Number	Project Name	MWC	MWE	Fuel Type
R03	Adams - Allen 138kV	26	130	Wind
T126	Olive-Dequine 345kV	40	200	Wind
U1-060	East Lima-South Kenton 138kV	19.7	151.8	Wind



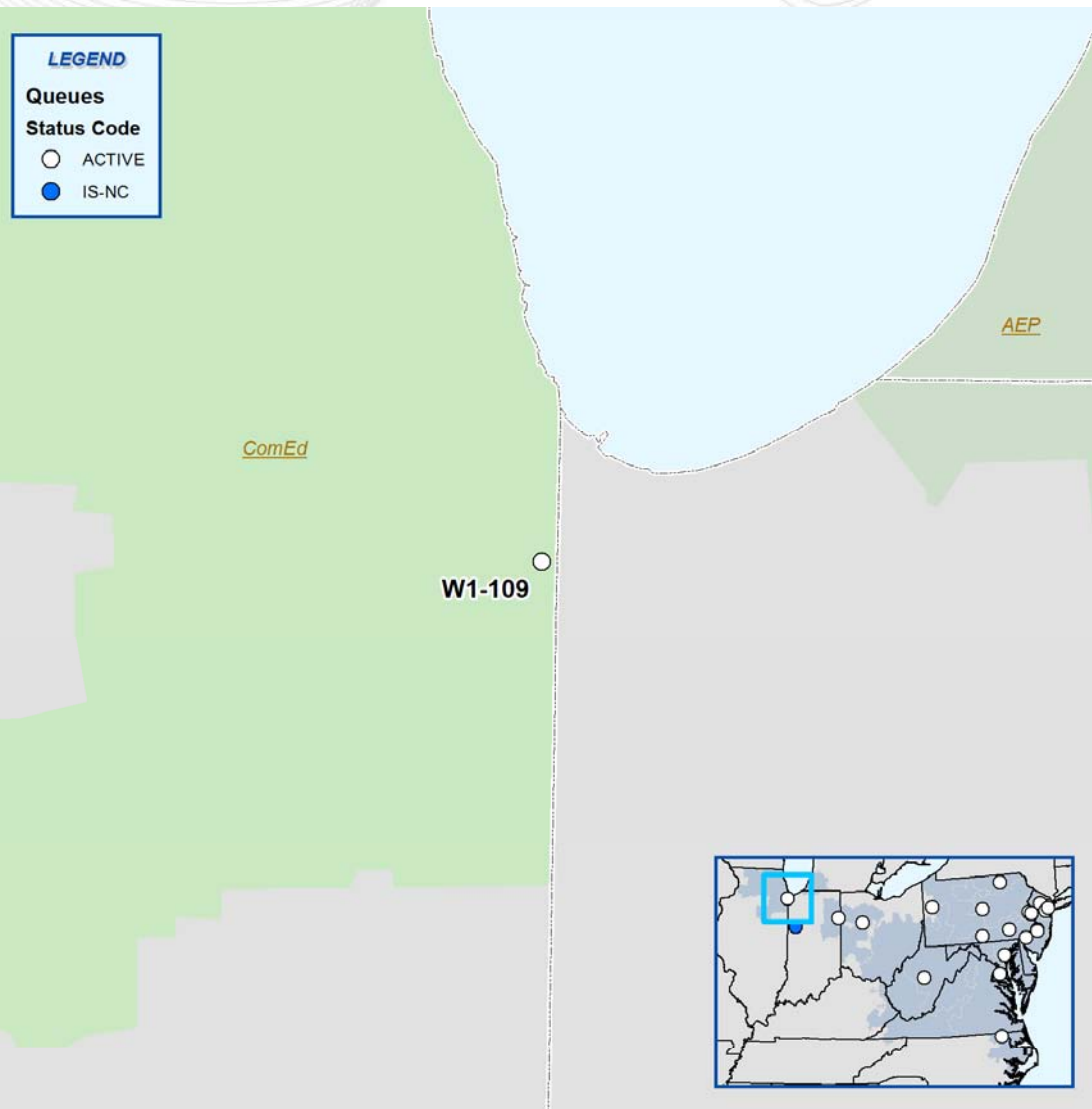
Queue Number	Project Name	MWC	MWE	Fuel Type
W1-012	Millheim-Brush Jct 46kV	6.5	50	Wind
W1-064	Grand Point 12kV	1.6	1.6	Methane
W1-080	Sutton Dam	9.9	9.9	Hydro
W1-104	Bellefonte 12kV	0.25	0.65	Solar
W1-107	Grove City road 12kV	0.74	2	Solar



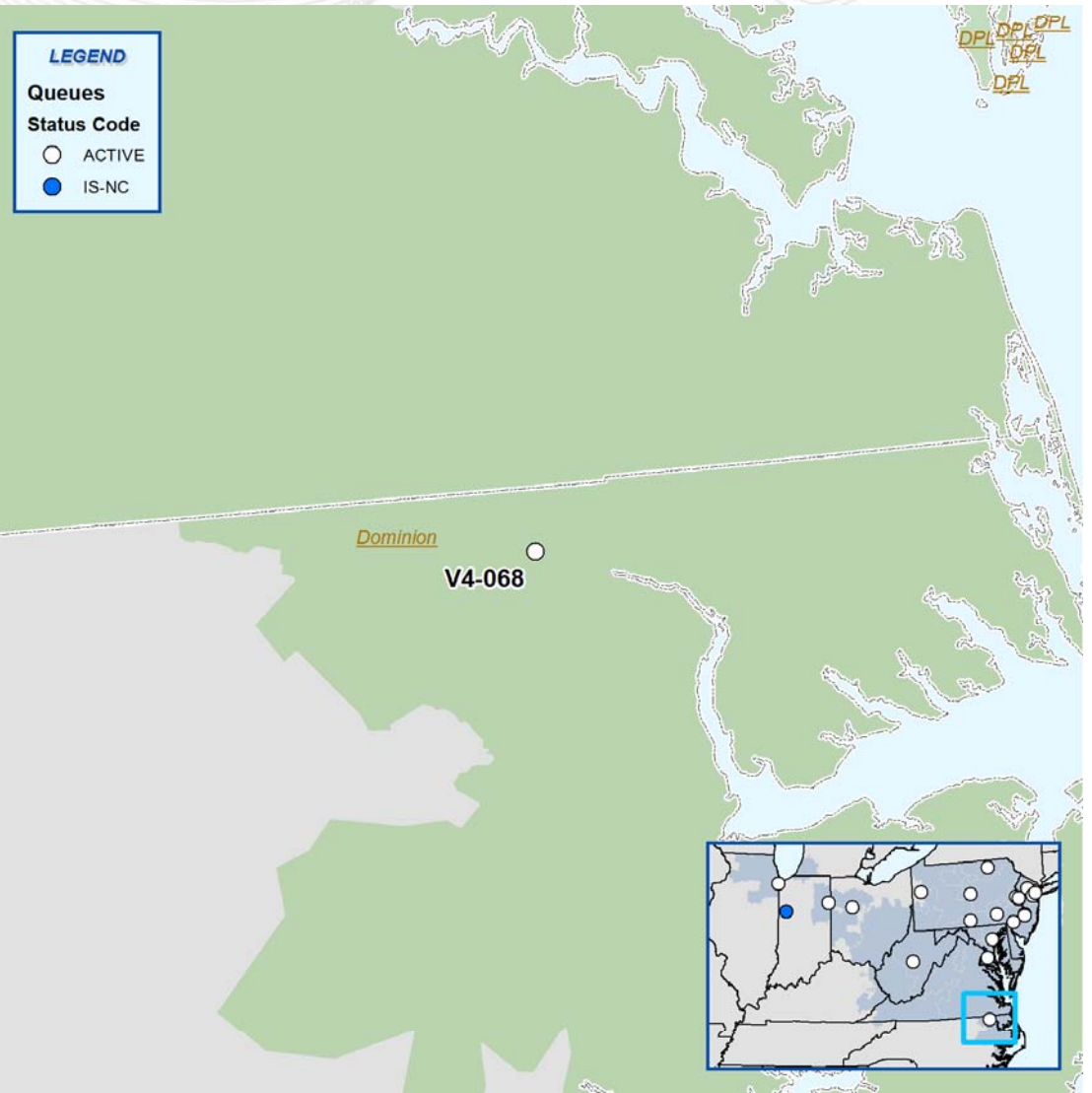
Queue Number	Project Name	MWC	MWE	Fuel Type
W1-033	Pumphrey 115kV	25	25	Biomass



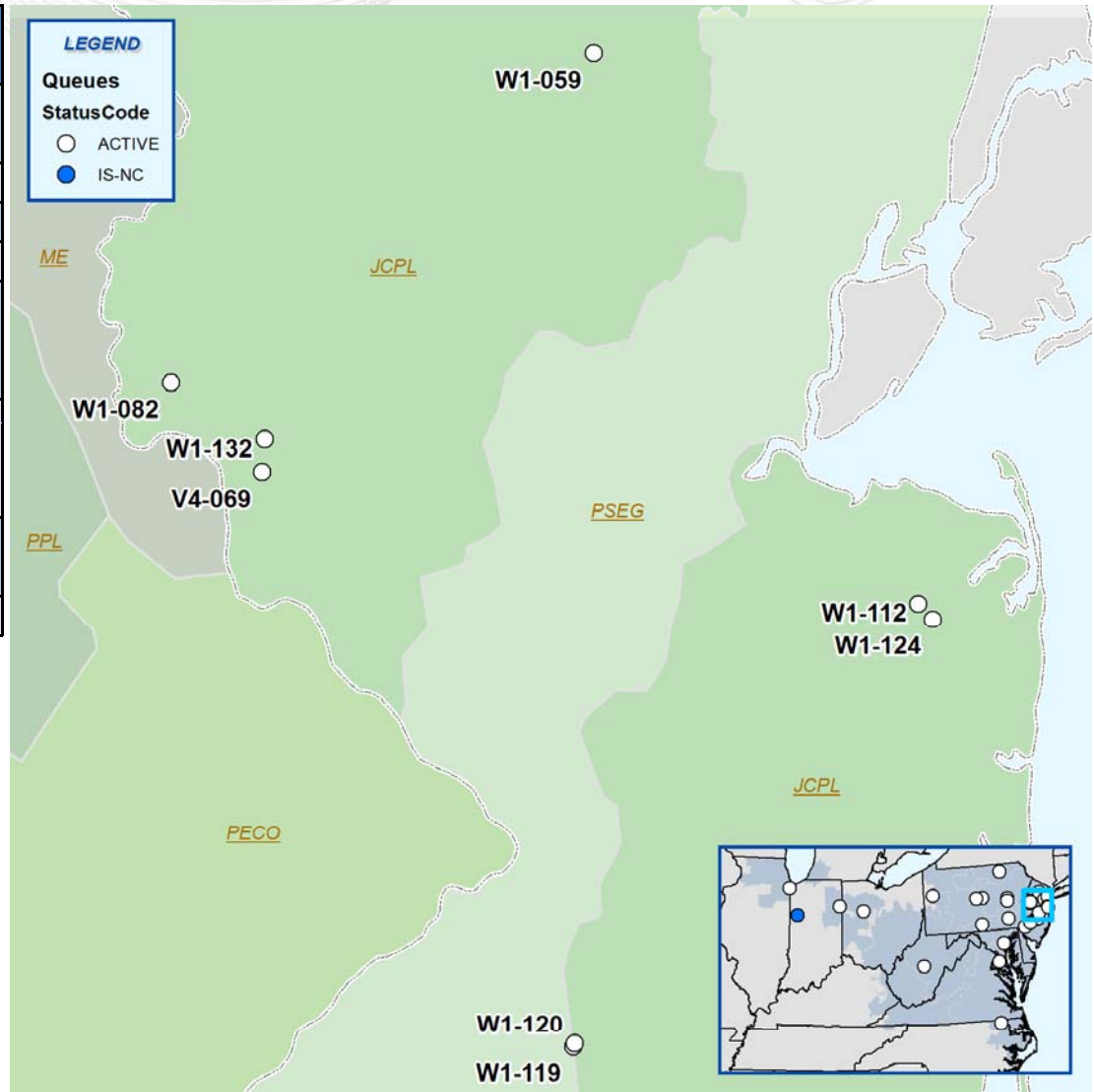
Queue Number	Project Name	MWC	MWE	Fuel Type
W1-109	Bloom 138kV	0	20	Storage



Queue Number	Project Name	MWC	MWE	Fuel Type
V4-068	Murphy's 34.5kV	3.23	5	Solar



Queue Number	Project Name	MWC	MWE	Fuel Type
V4-069	Frenchtown 34.5kV	1.14	3	Solar
W1-059	Denville	0.78	2	Solar
W1-082	Milford	7.6	20	Solar
W1-112	Holmdel	1.52	4	Solar
W1-119	Pemberton Township 1 12kV	6.8	18	Solar
W1-120	Pemberton Township 2 12kV	7.6	20	Solar
W1-124	Tinton Falls 34.5kV	7.6	20	Solar
W1-132	Pittstown	0	2	Solar



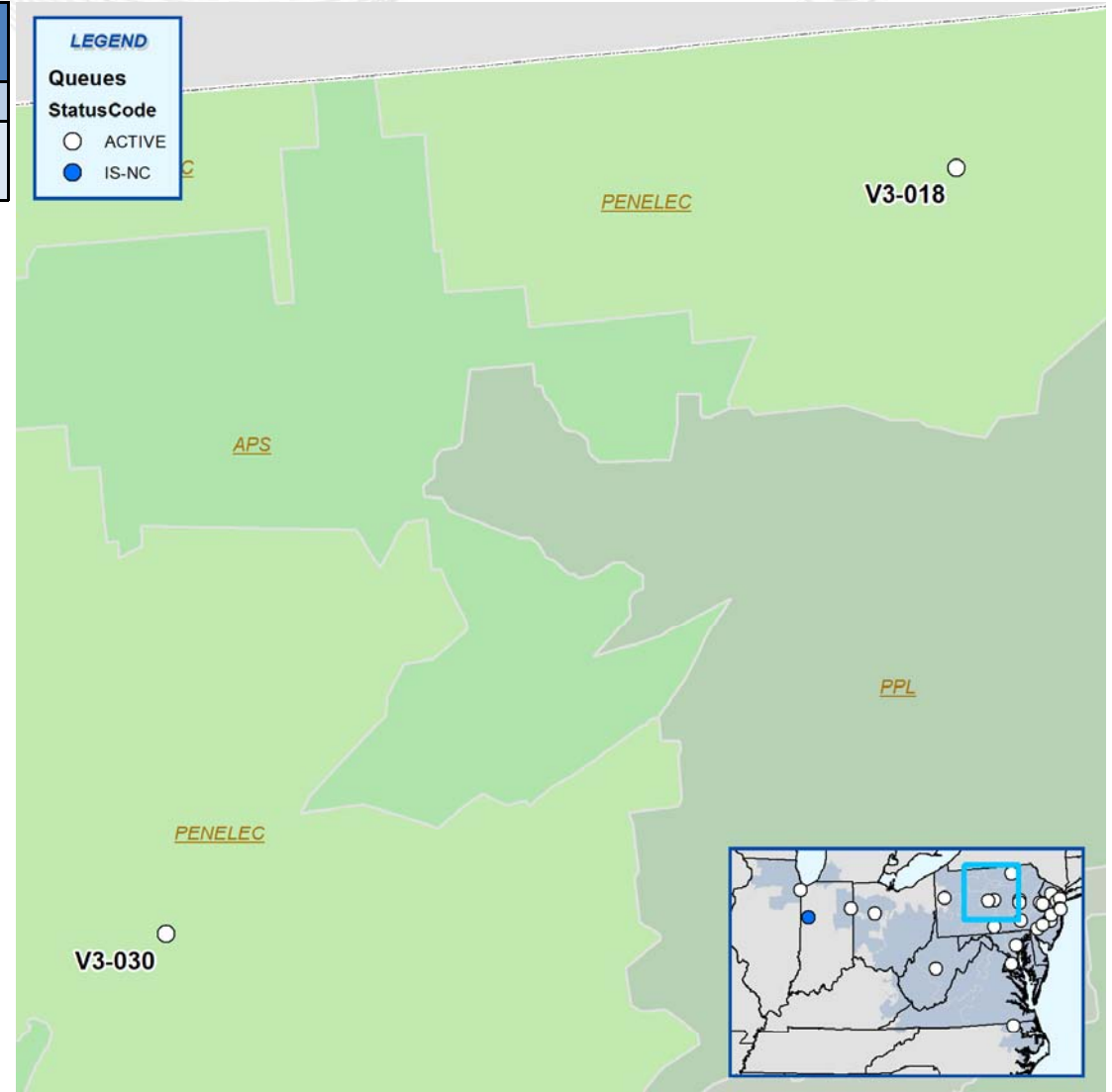
Queue Number	Project Name	MWC	MWE	Fuel Type
V3-018	Towanda 115kV	9.75	75	Wind
V3-030	St. Benedict-Patton 46kV	3.98	30.6	Wind

LEGEND

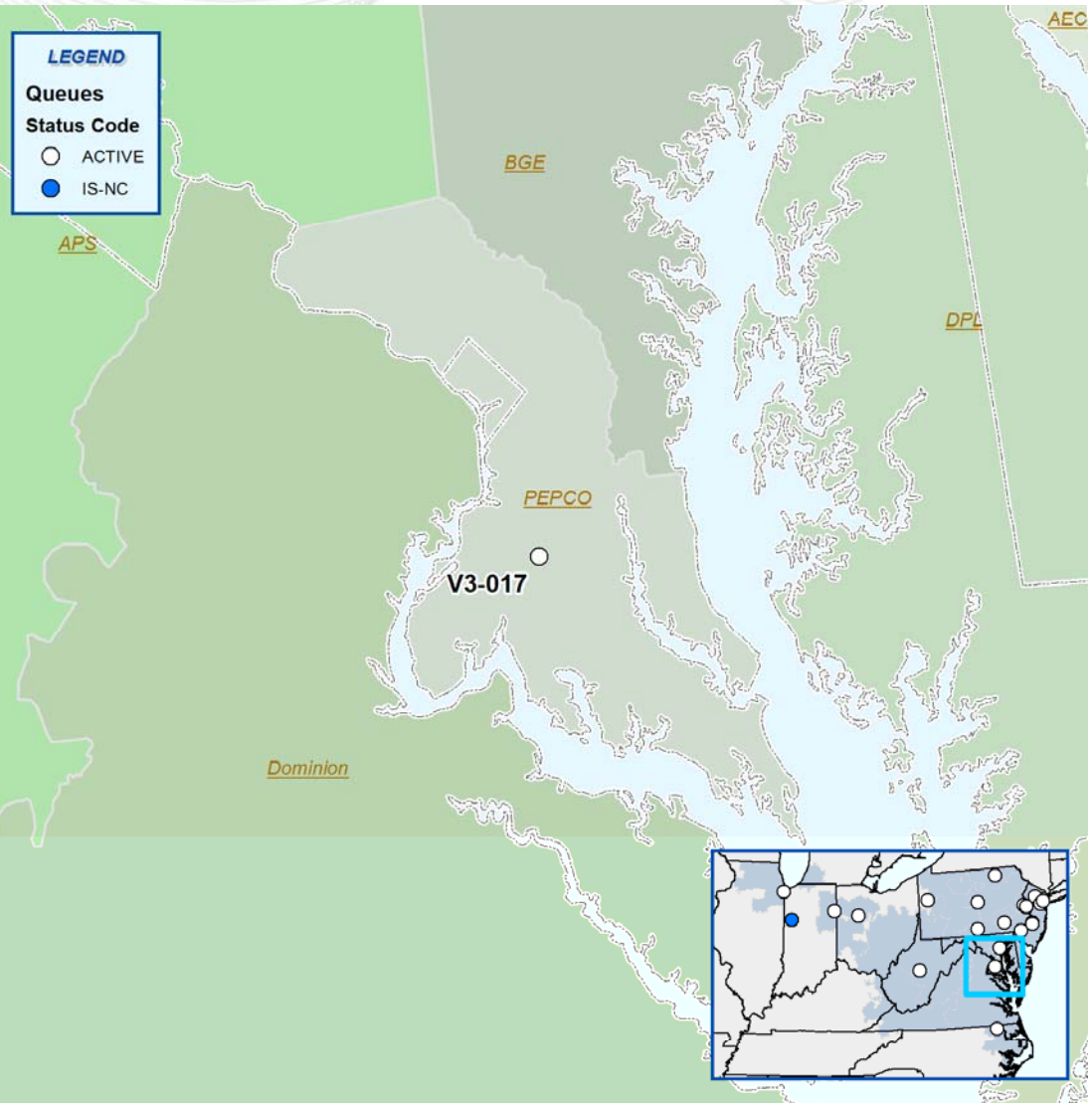
Queues

StatusCode

- ACTIVE
- IS-NC



Queue Number	Project Name	MWC	MWE	Fuel Type
V3-017	Morgantown-Oak Grove	725	725	Natural Gas



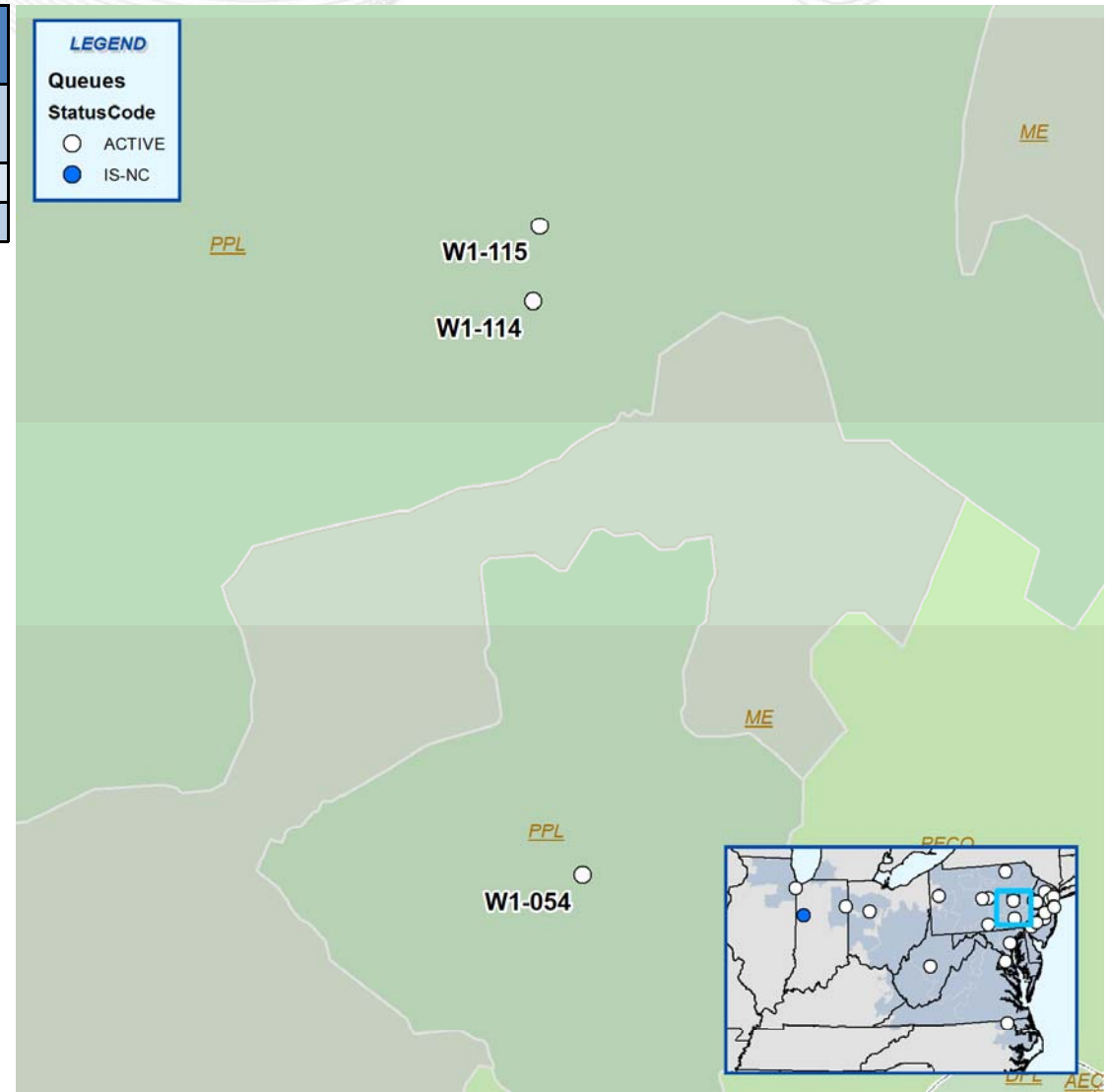
Queue Number	Project Name	MWC	MWE	Fuel Type
W1-054	South Akron-Prince	11.4	11.4	Methane
W1-114	Port Carbon	1.1	3	Solar
W1-115	Tamanend	1.1	3	Solar

LEGEND

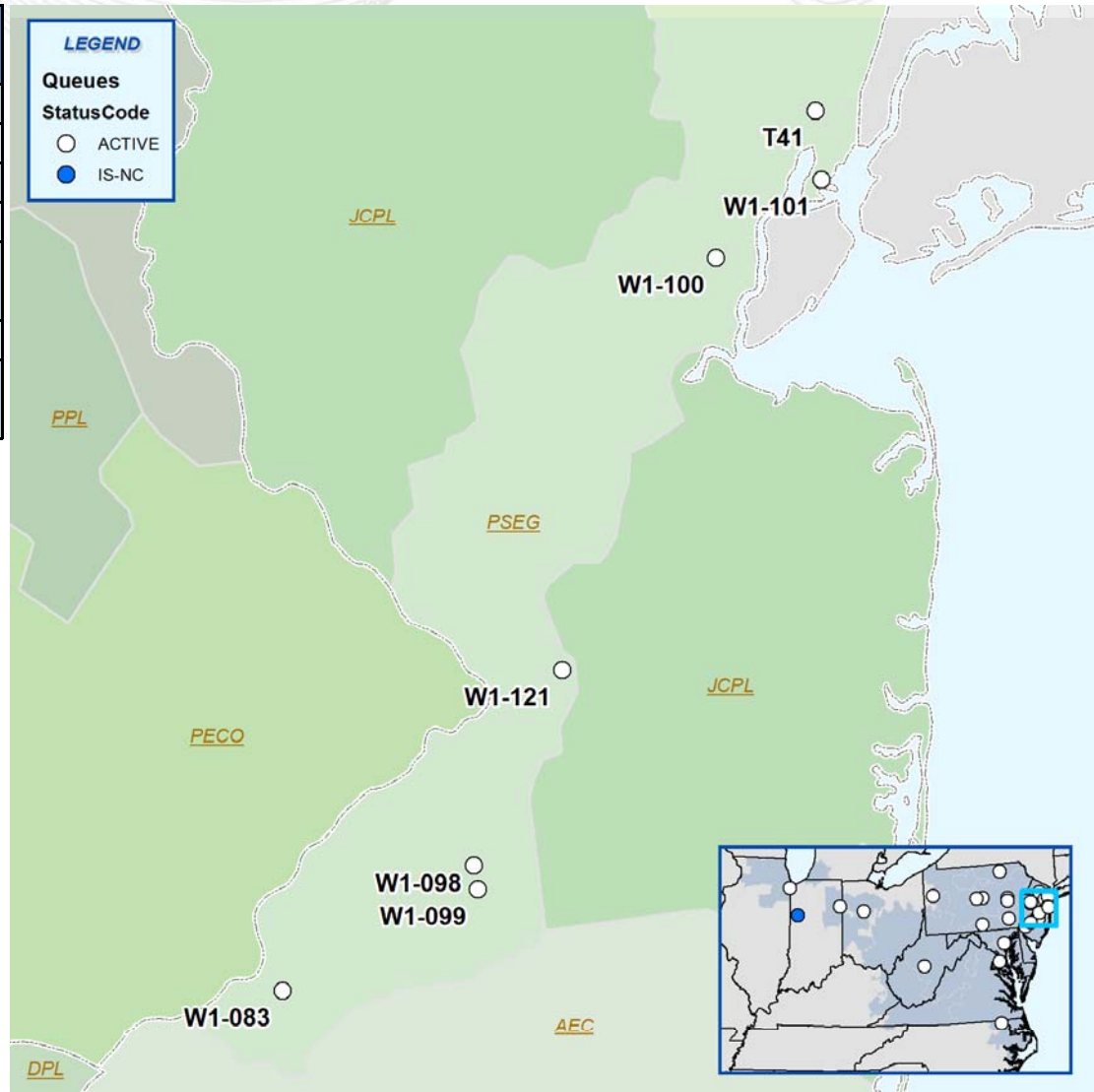
Queues

StatusCode

- ACTIVE
- IS-NC



Queue Number	Project Name	MWC	MWE	Fuel Type
T41	Kearny 138kV	178	178	Natural Gas
W1-083	Deptford 13kV	2.3	6.2	Solar
W1-098	Levittown 13kV	0.367	0.965	Solar
W1-099	Levittown 13kV	0.487	1.282	Solar
W1-100	Minue Street 12kV	0.662	1.741	Solar
W1-101	Bayonne 13kV	0.532	1.4	Solar
W1-121	Crosswicks 13kV	3	8	Solar





Withdrawn projects

Queue Number	Project Name	Fuel type	MWC	MWE	TO Zone
Q12	Fox River Heights 12kV	Methane	1.6	1.6	ComEd
Q13	Kankakee 12kV	Methane	1.6	1.6	ComEd
Q14	Hegewisch 12kV	Methane	6.6	6.6	ComEd
Q15	Woodridge 12kV	Methane	6.6	6.6	ComEd
Q16	Western Ave 12kV	Methane	6.6	6.6	ComEd
Q17	Northbrook 12kV	Methane	6.6	6.6	ComEd
Q18	Moser 34.5kV	Methane	5	5	PECO
U1-037	LaSalle-Plano 345kV	Wind	32.5	250	ComEd
U2-031	Kings Fork 34.5kV	Methane	24.75	30	Dominion
U2-042	East Lima-South Kenton 138kV	Wind	26.1	201	AEP
U2-058	Kincaid Wind	Wind	65	500	ComEd
U2-065	Kankakee 138kV	Wind	32.5	250	ComEd
V3-029	Chatfield 138kV	Wind	19.5	150	AEP
V3-034	Red Oak 230kV	Natural Gas	50	50	JCPL
V3-056	Metropolitan Court 34.5kV	Biomass	50	50	APS
V3-060	Antioch	Wind	2.6	20	ComEd
V4-071	Bixby 13.8kV	Storage	0	2	AEP
W1-007	Oak Hall	Solar	7.6	20	DPL
W1-009	Tasley-Kellam 69kV	Solar	7.6	20	ODEC
W1-030	Pontiac Midpoint-Reynolds 345kV	Wind	39	300	AEP
W1-031	Pontiac Midpoint-Reynolds 345kV	Wind	39	300	AEP
W1-034	Burches Hill	Natural Gas	750	750	PEPCO
W1-091	Berlin 12kV	Solar	0.95	2.5	AEC
W1-103	Millville 12kV	Solar	7.6	20	AEC
W1-125	Mannington Township 2 12kV	Solar	4.56	12	AEC
W2-041	Egg Harbor Township	Solar	0.95	2.5	AEC