

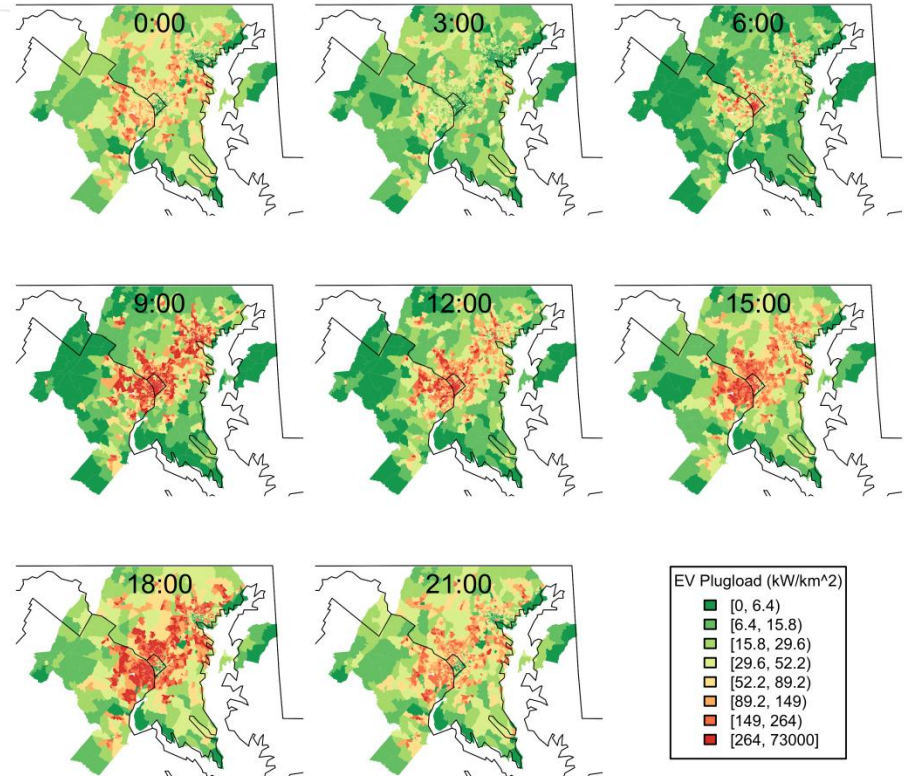
BetterPlace Study

Chantal Hendrzak
TOA-AC
January 20, 2011

Model the behavior and “grid side” impact of 1M EVs in the great Washington – Baltimore area

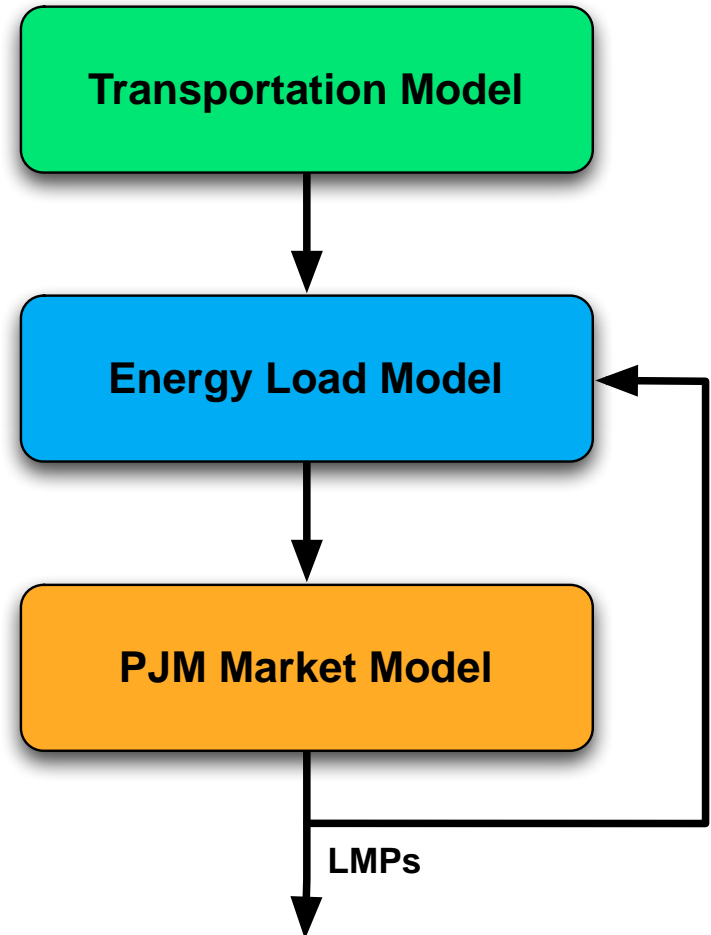
Demonstrate the value of a managed EV network in terms of LMP impact savings and ancillary services

Enable PJM, Better Place, Transmission Owners and other stakeholders to learn from the results



Three charging scenarios

- Unmanaged Charging (charge whenever you can)
- Consumer Two-Tier Pricing (pay more during the day)
- LMP-Based Managed Charging



- Study completed in February
- Share results:
 - TOA-AC
 - Planning Committee
 - MRC