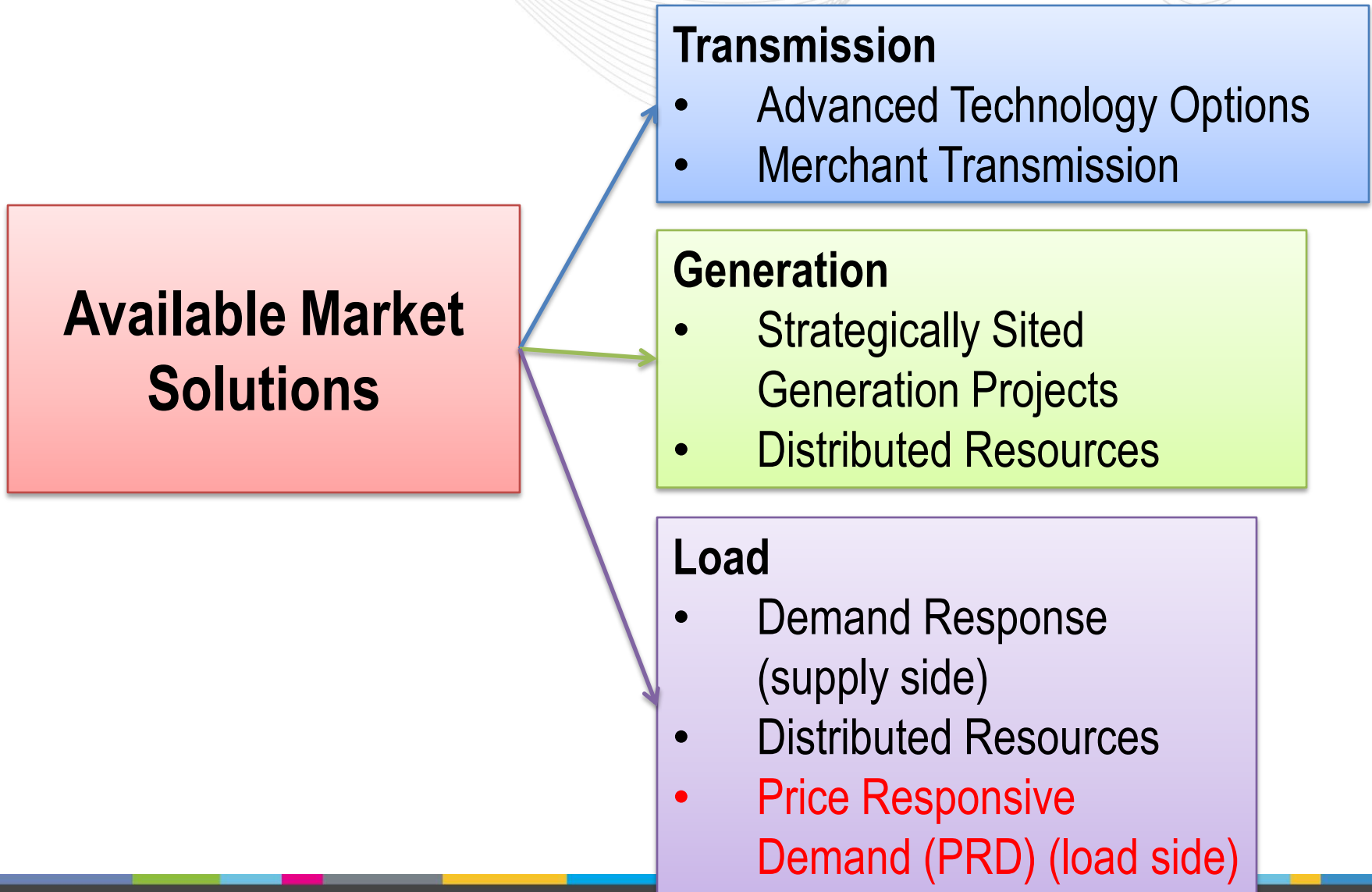
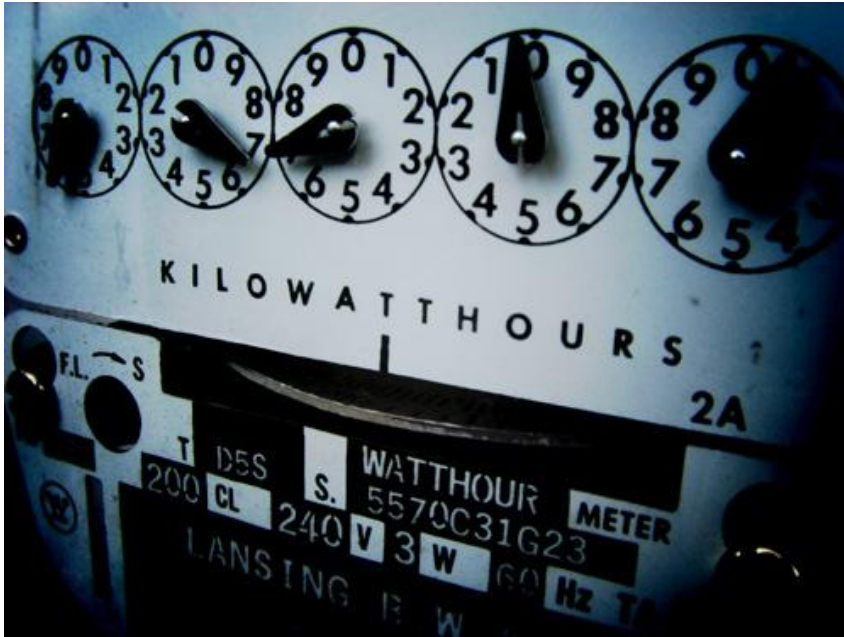


PJM Demand Response Symposium: *Integrating Price Responsive Demand into the Planning Process*



- Accounted for as a reduction to the unrestricted peak 3 years in advance for Base Residual Auction or for Incremental Auctions
- Subject to measurement and verification process
- All PJM approved committed PRD will be netted from unrestricted load forecast
- Load net of committed PRD will be modeled in RPM auctions and RTEP studies
- Avoid counting the same load reduction capability on both the supply side and the load side of the market for planning purposes
- Account for location of PRD

- Similar to Economic Load Response
 - Lowers metered load
 - Reduced metered load history feeds into future load forecast
- Will result in lower load forecast over time
- Impact on RTEP studies is indirect

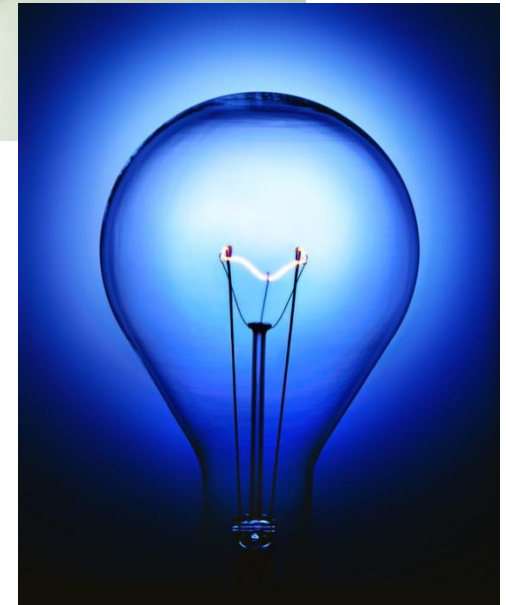


Market Efficiency

- Develop relationship between LMP and trigger to interrupt PRD

Reliability Analyses

- Develop relationship between load and generator availability and trigger to interrupt PRD
- Load Deliverability
 - Model PRD similar to DR
- Generator Deliverability and NERC Category C
 - Likely would not interrupt PRD





- Process expected to evolve over time as PRD quantity grows and experience is gained
- Process changes will be developed through Planning Committee and Load Analysis Subcommittee
- Experience with PRD expected to lead to improved understanding of relationship of price to peak load