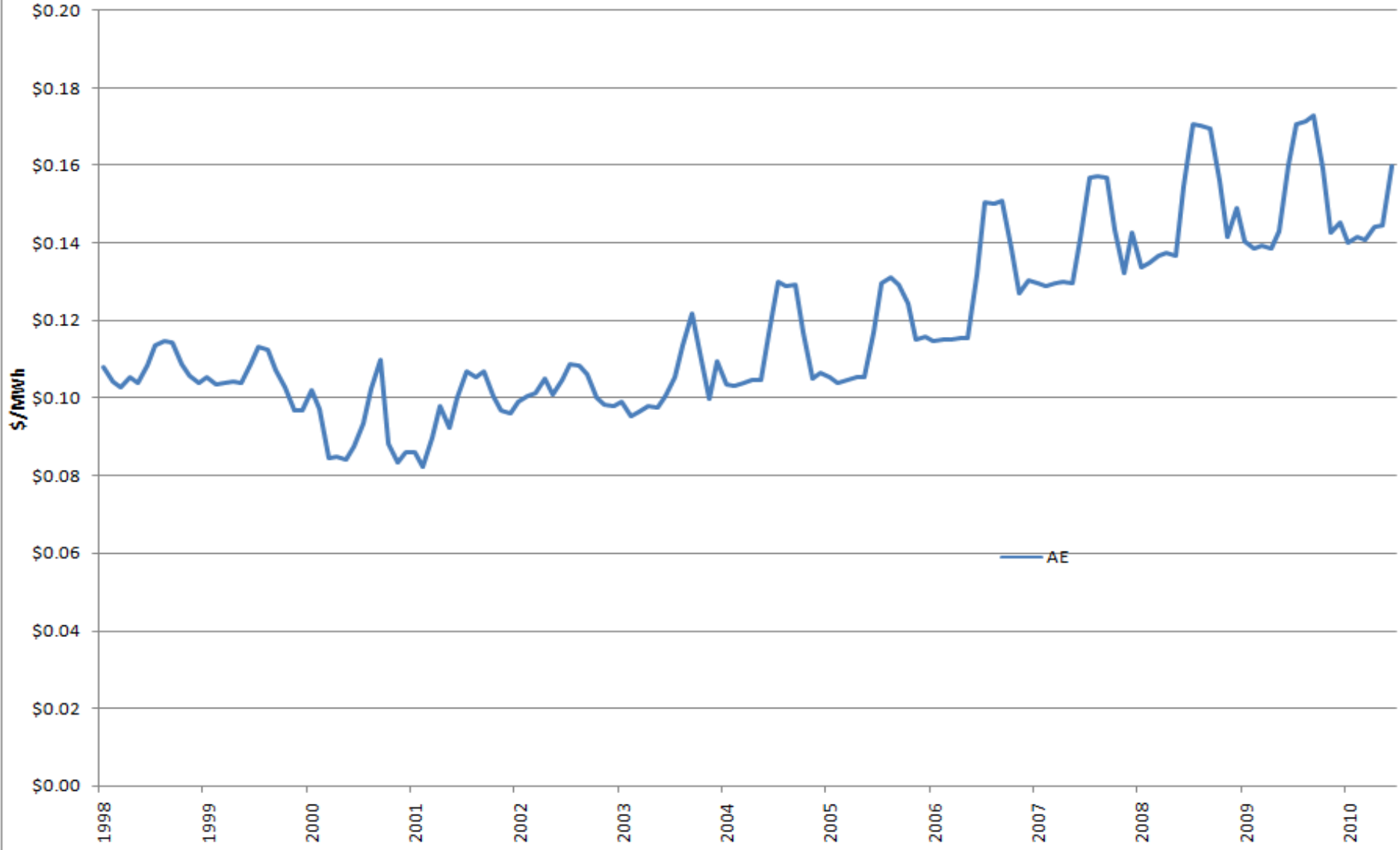


PJM Proposed Price Shift Points

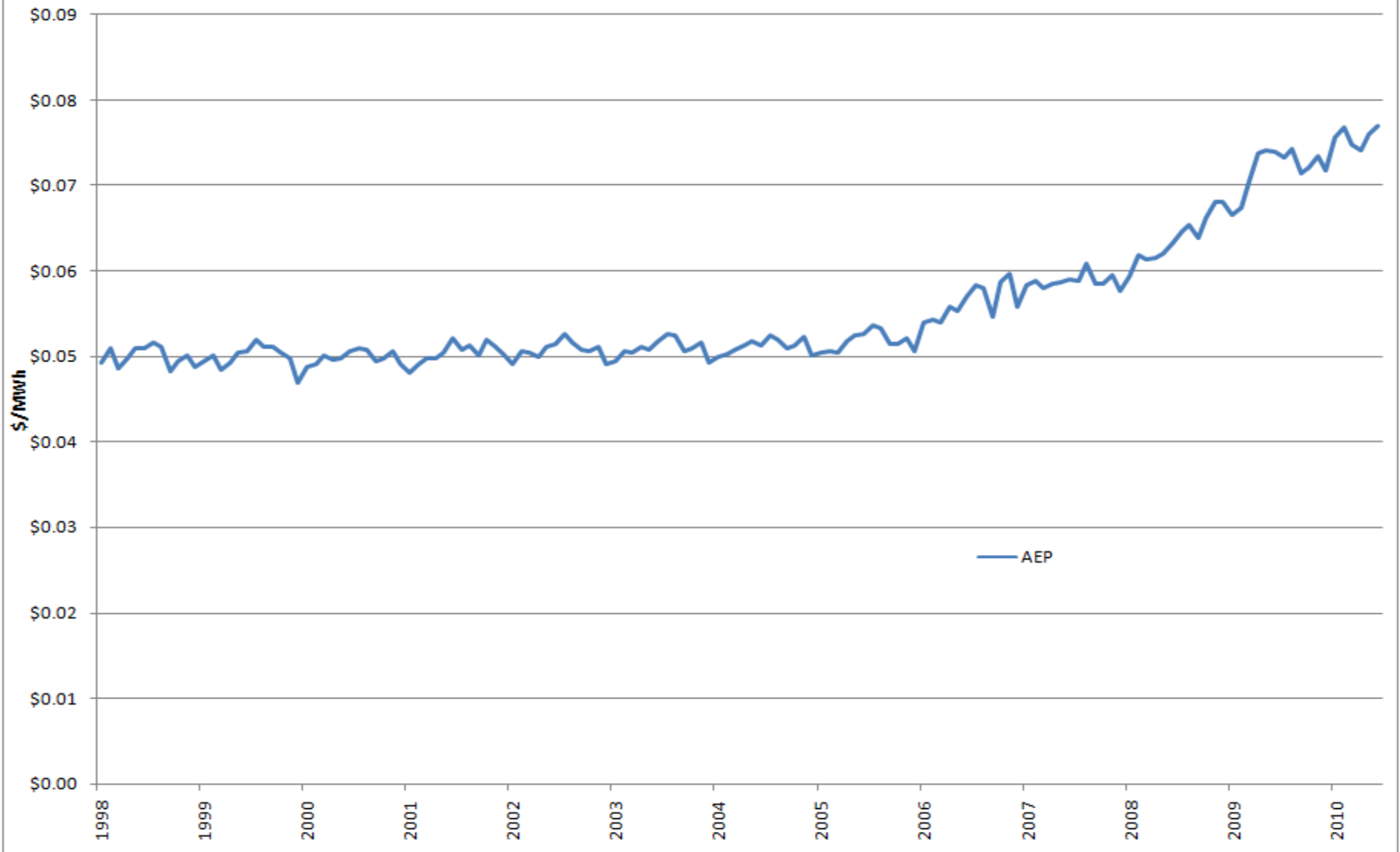
Agenda Item #5
Load Analysis Subcommittee
October 26, 2010

- Monthly Revenue and sales data was obtained from the Energy Information Administration's EIA-826 database.
- PJM identified shifts consistent with “rate changes [that] are associated with the removal of rate caps reflecting completion of the transition to competitive markets.”
- PJM seeks member verification of shift points.

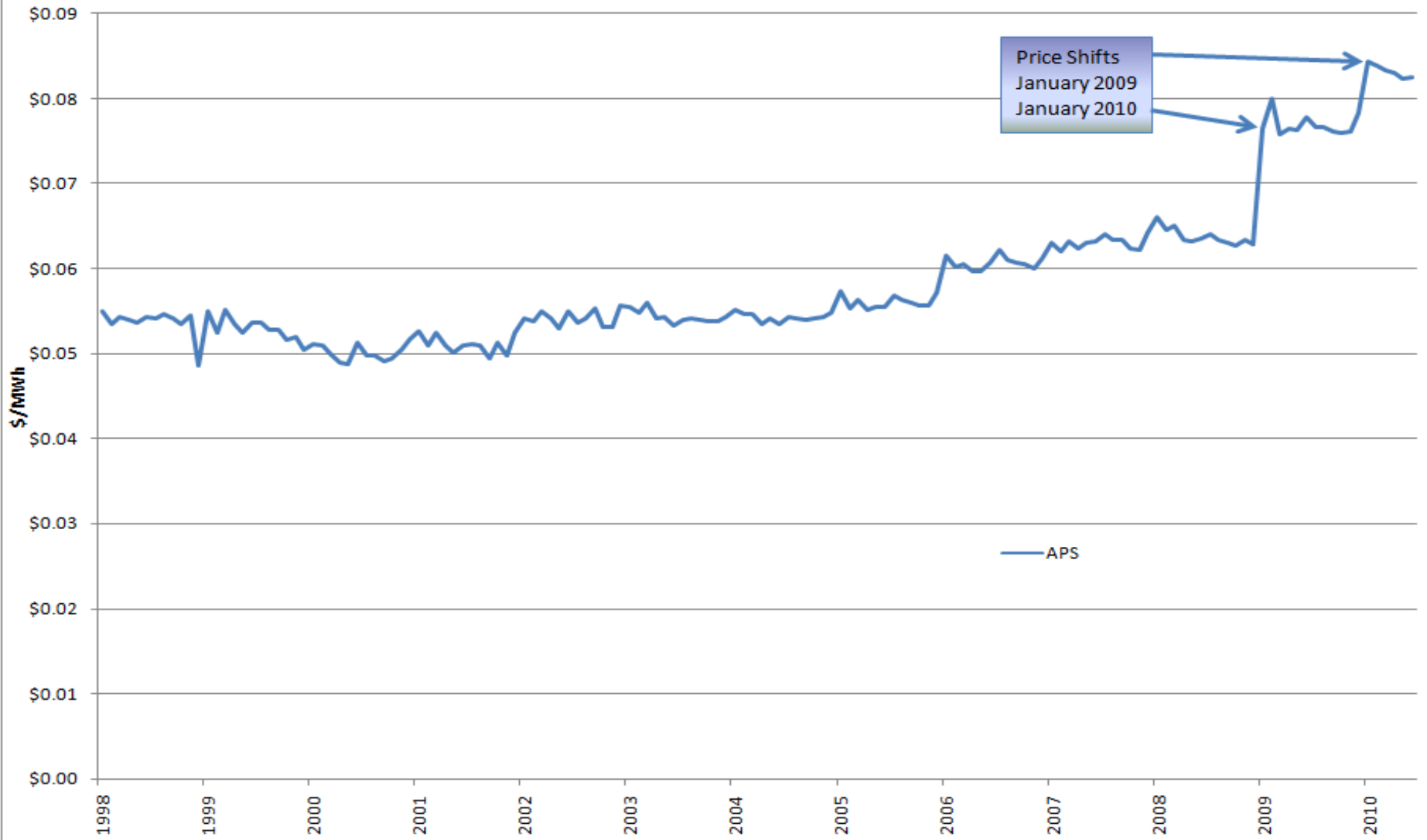
AE



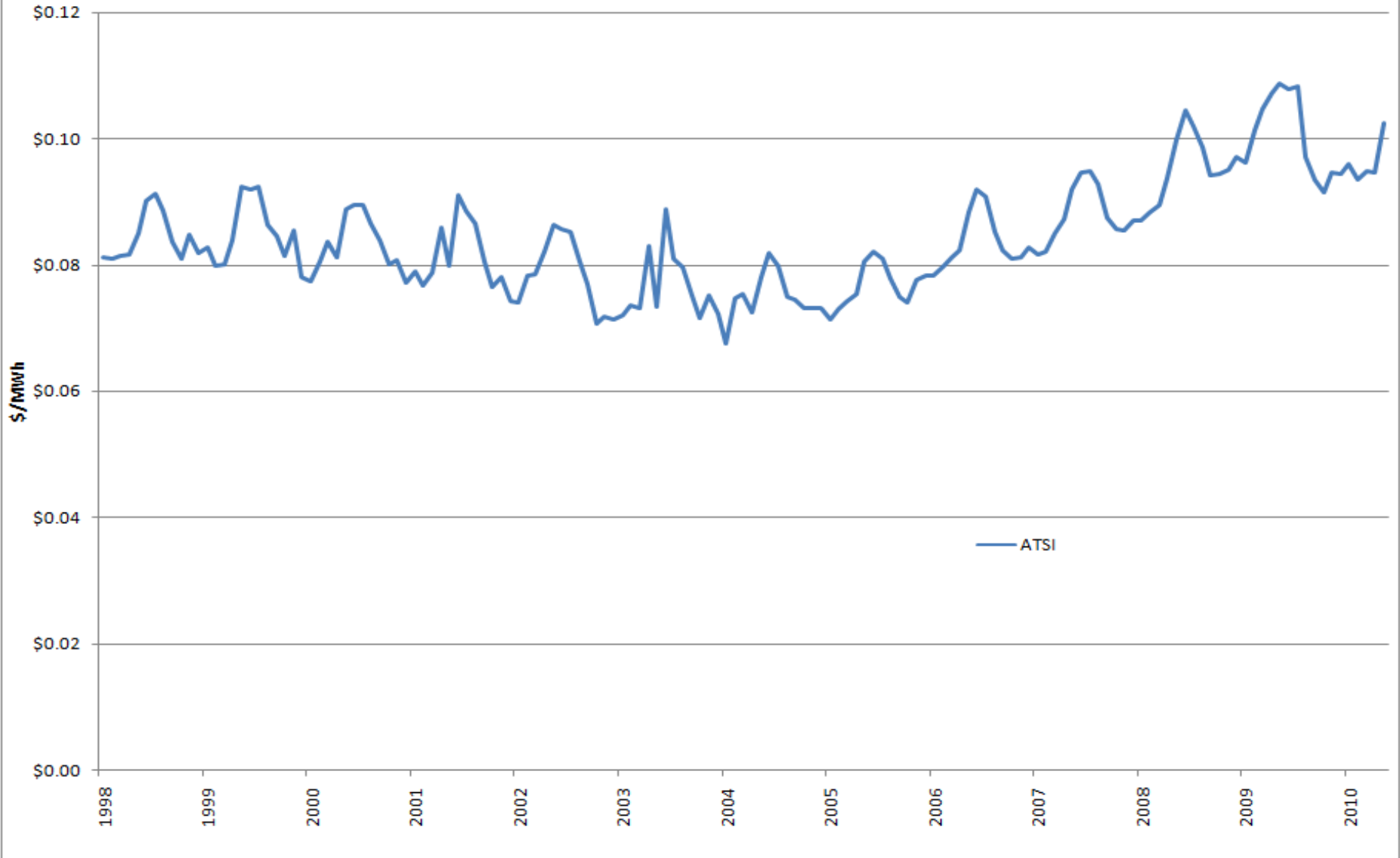
AEP



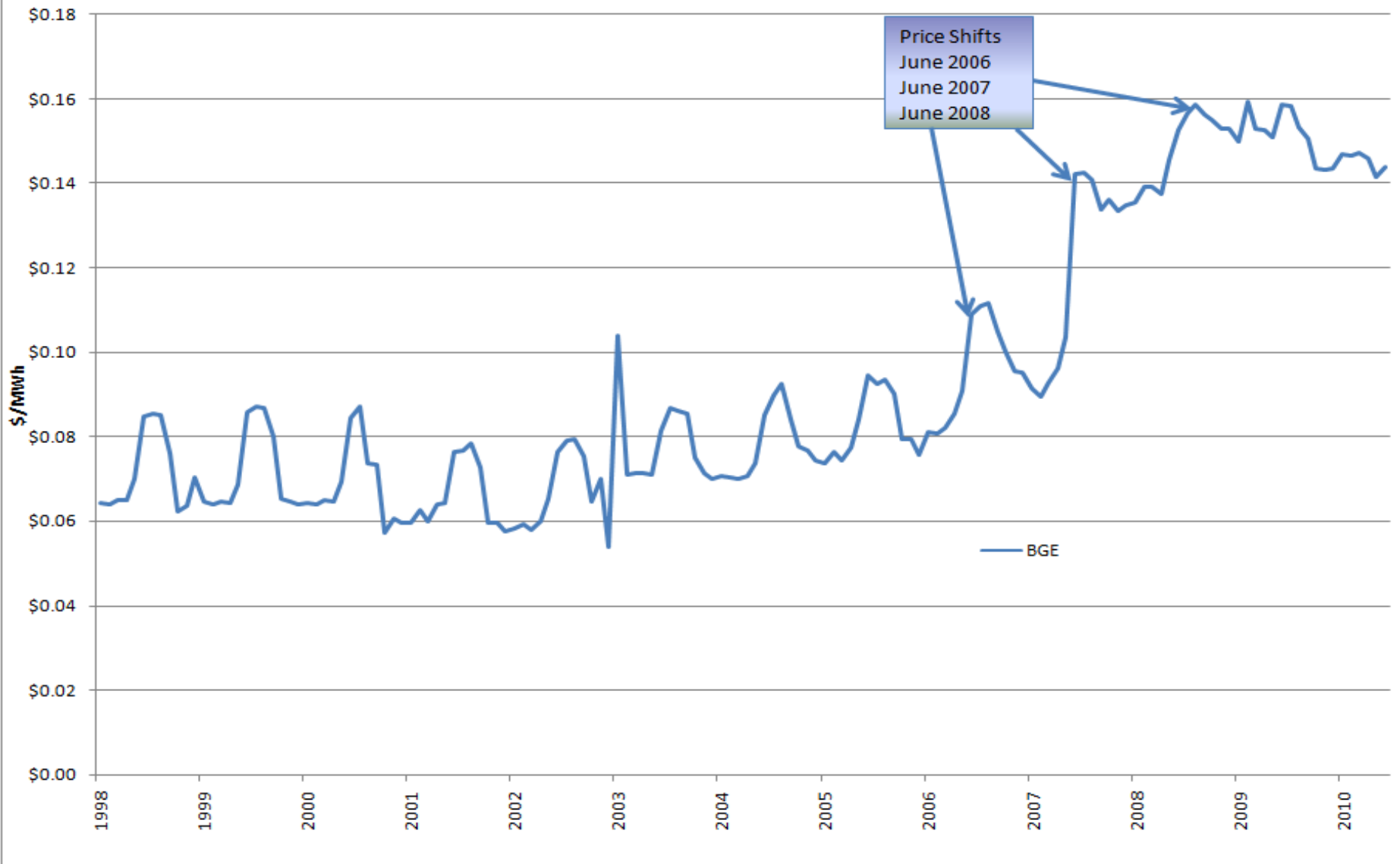
APS



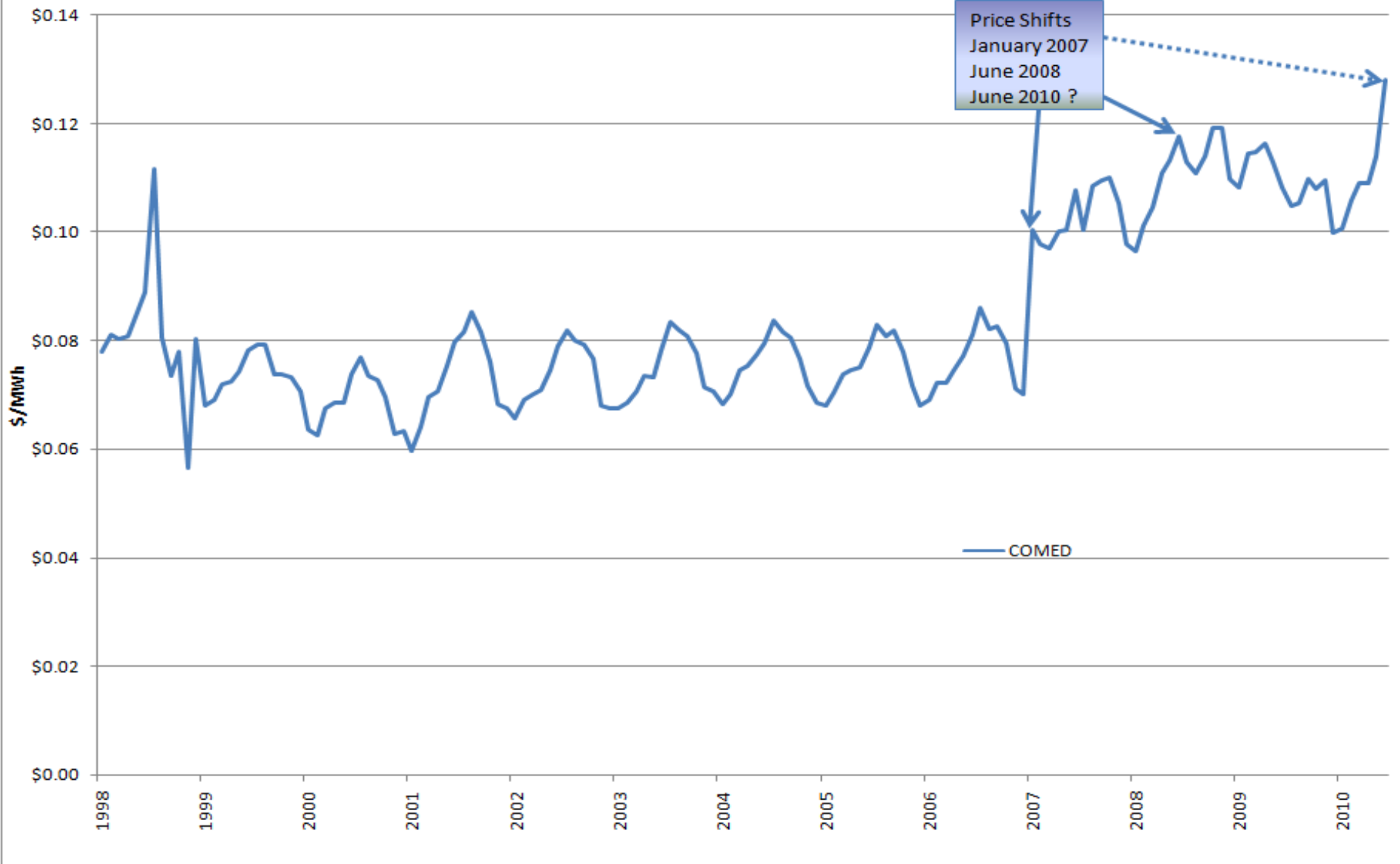
ATSI



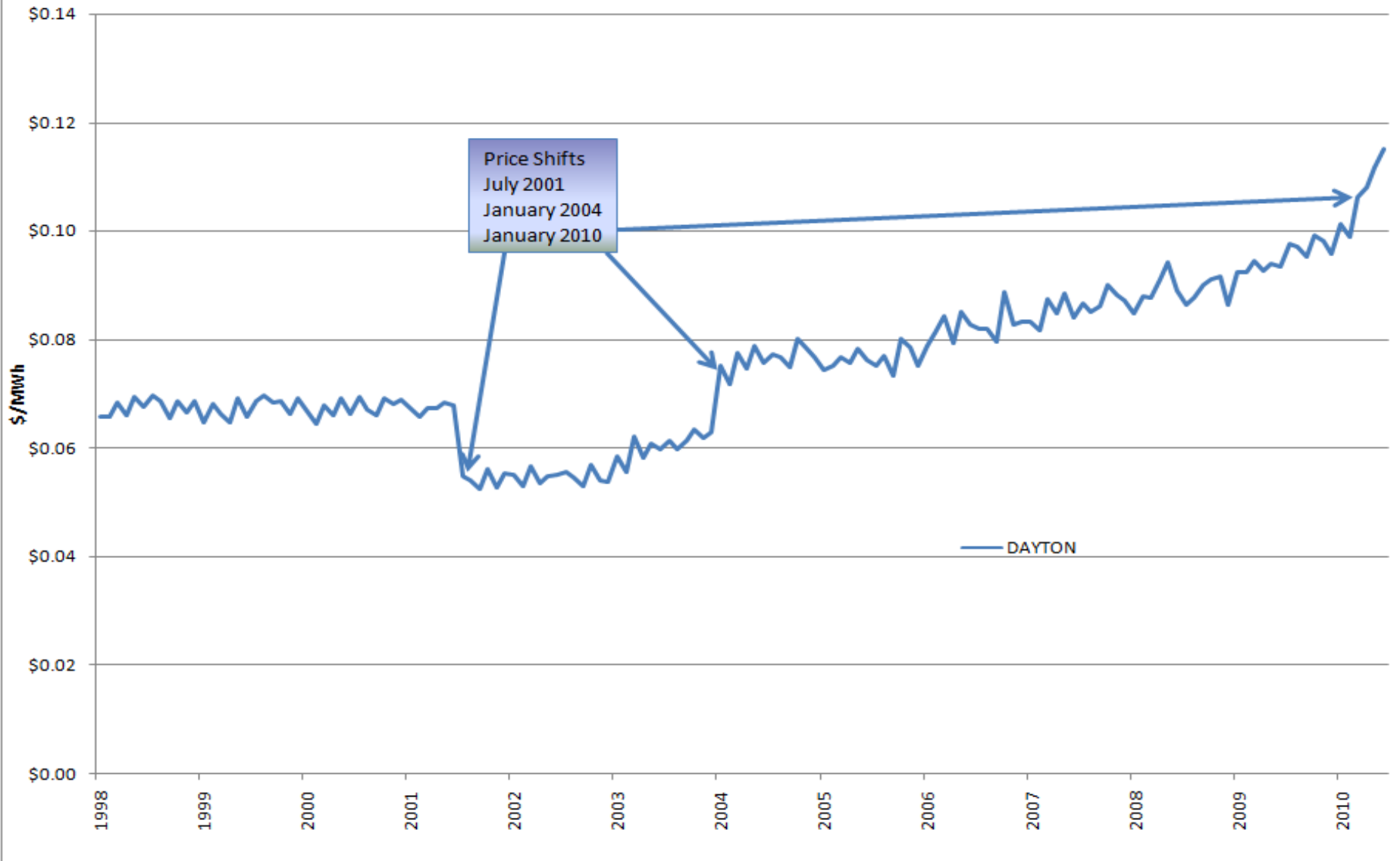
BGE



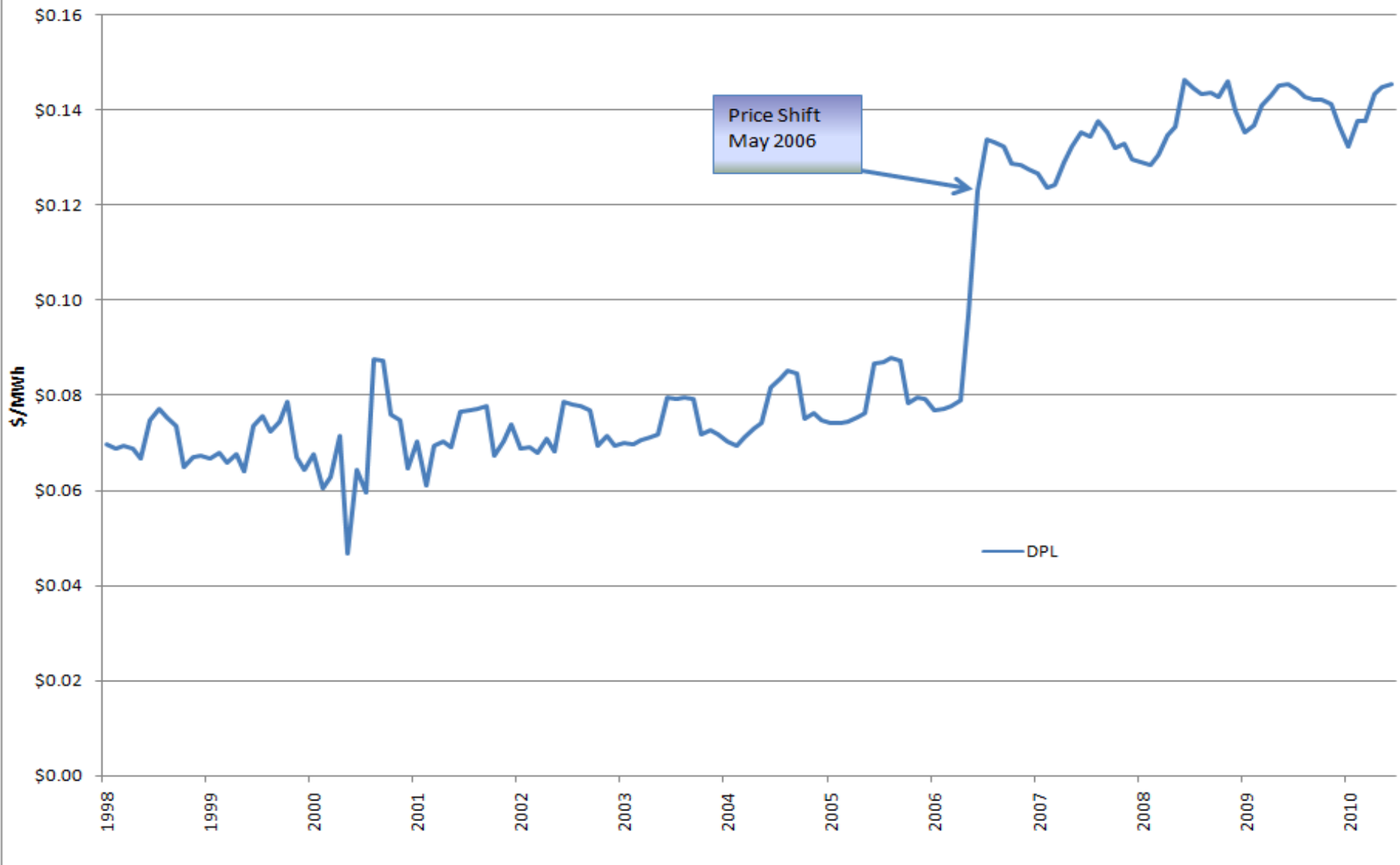
COMED



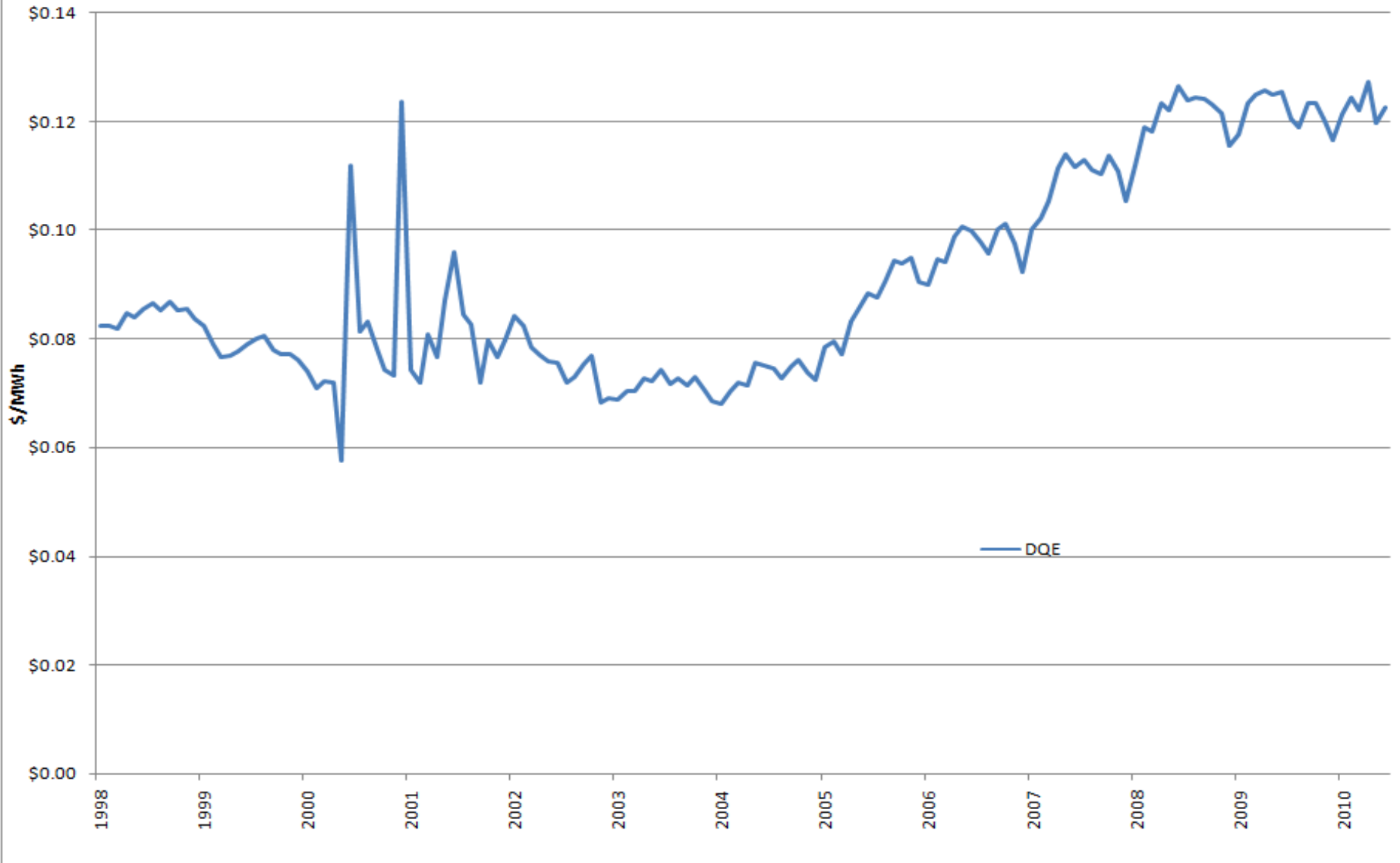
DAYTON



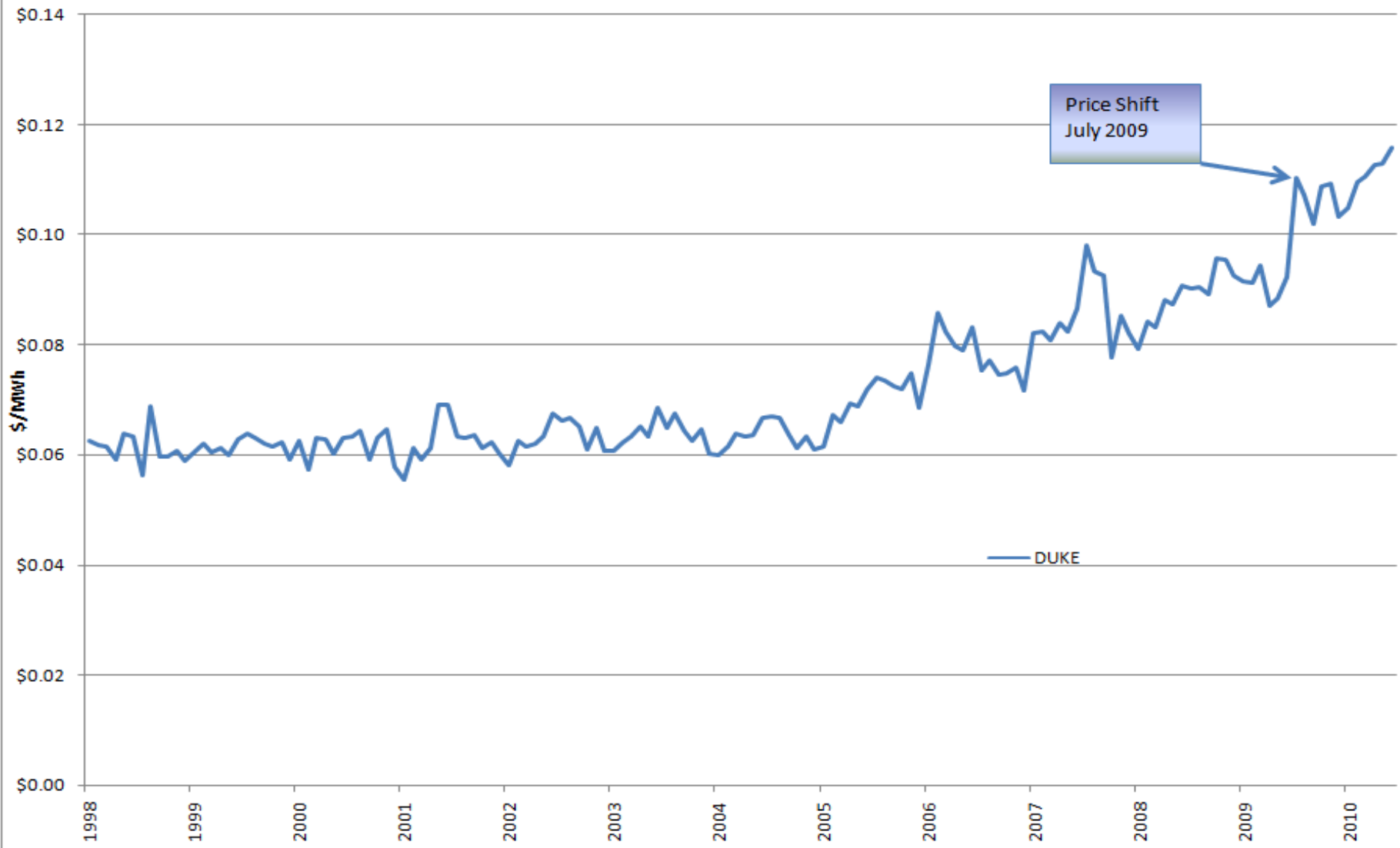
DPL



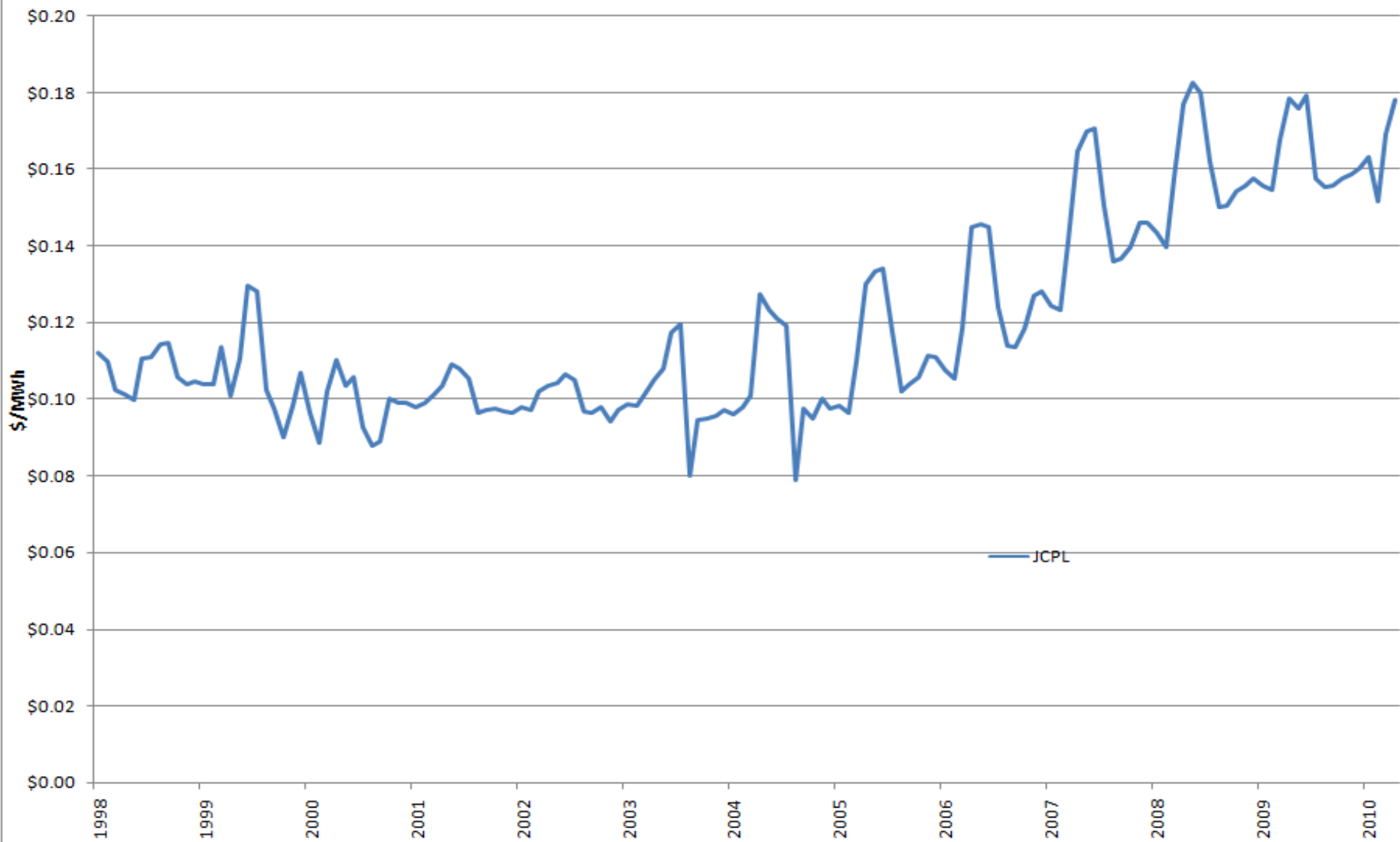
DQE



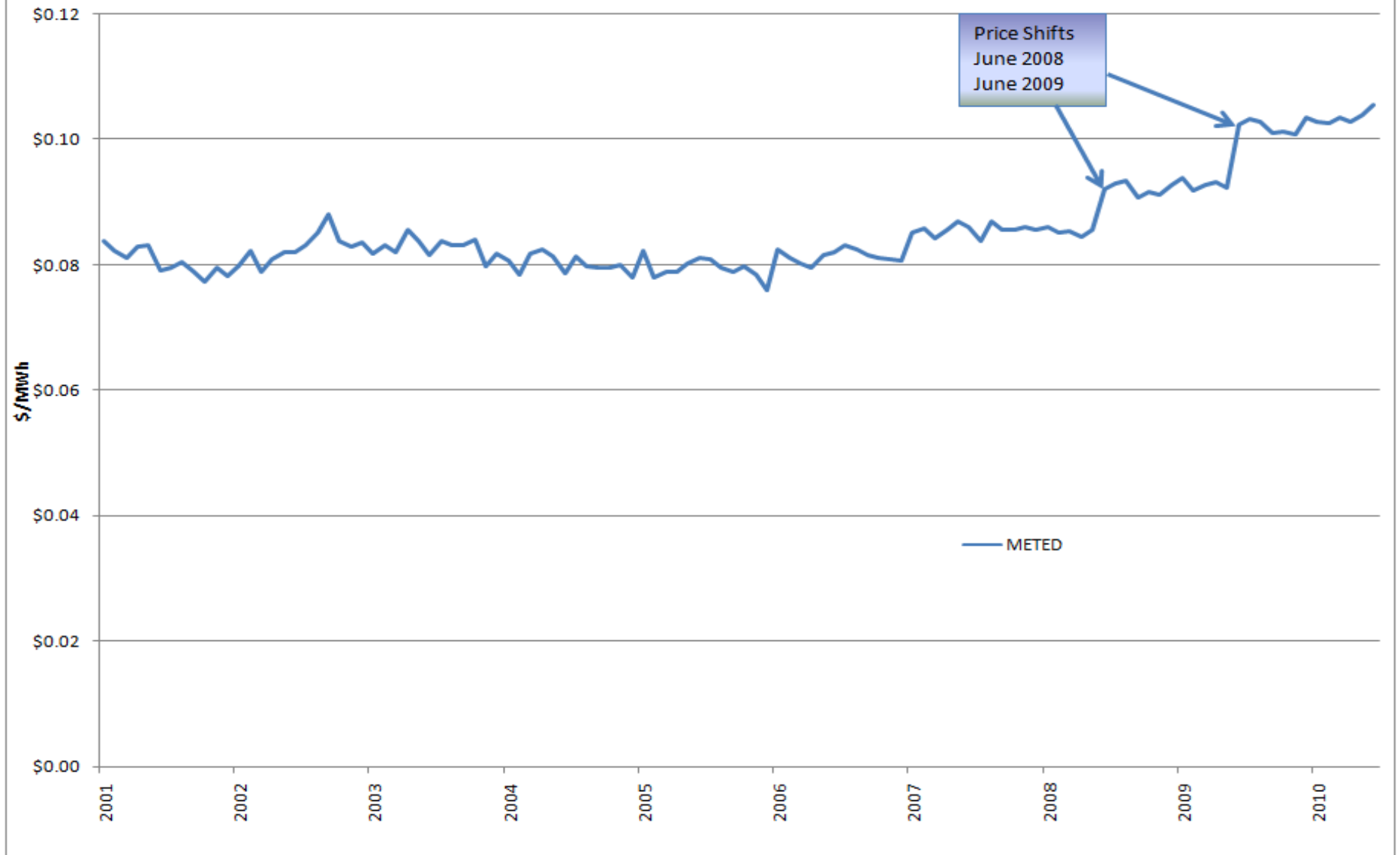
DUKE



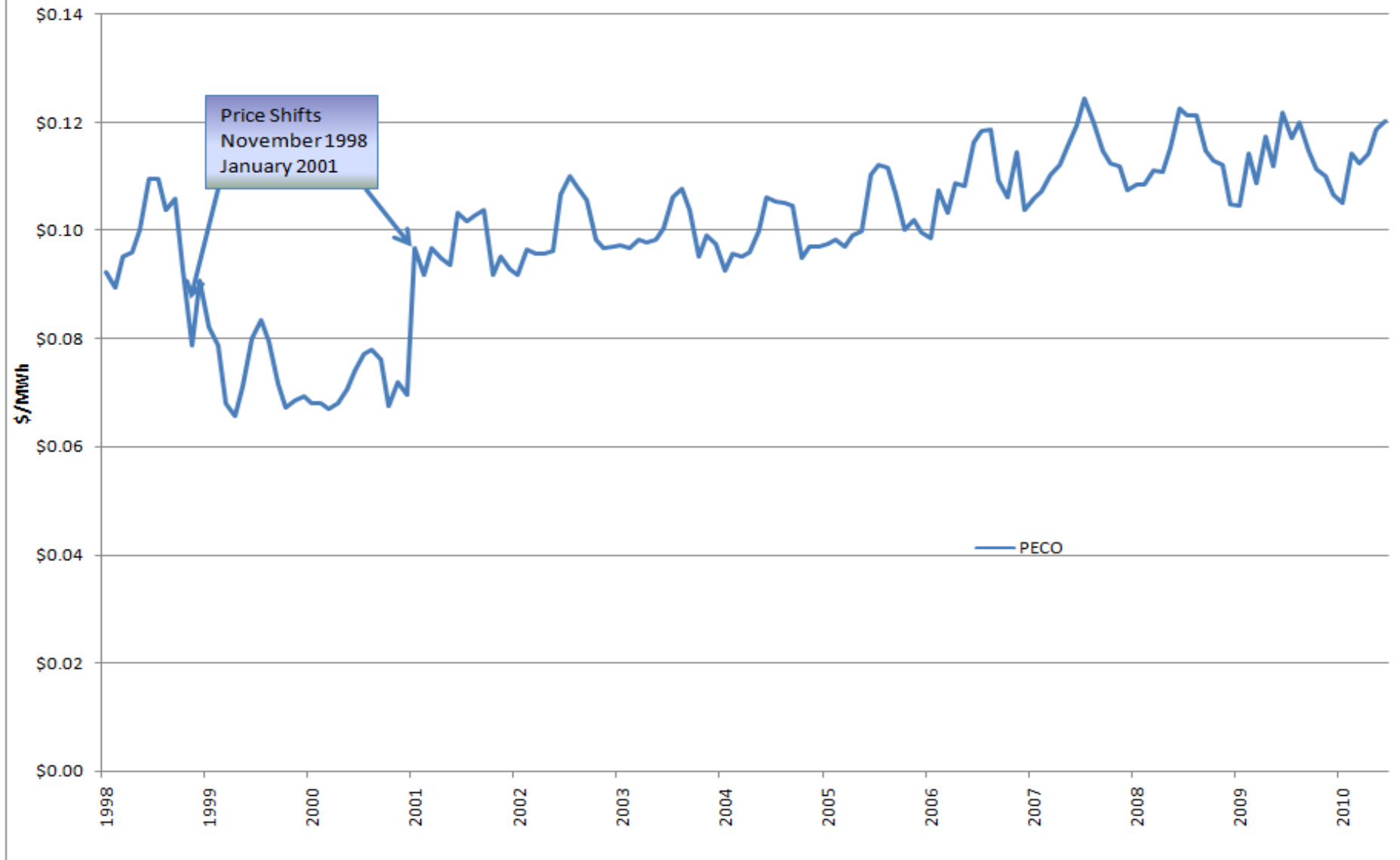
JCPL



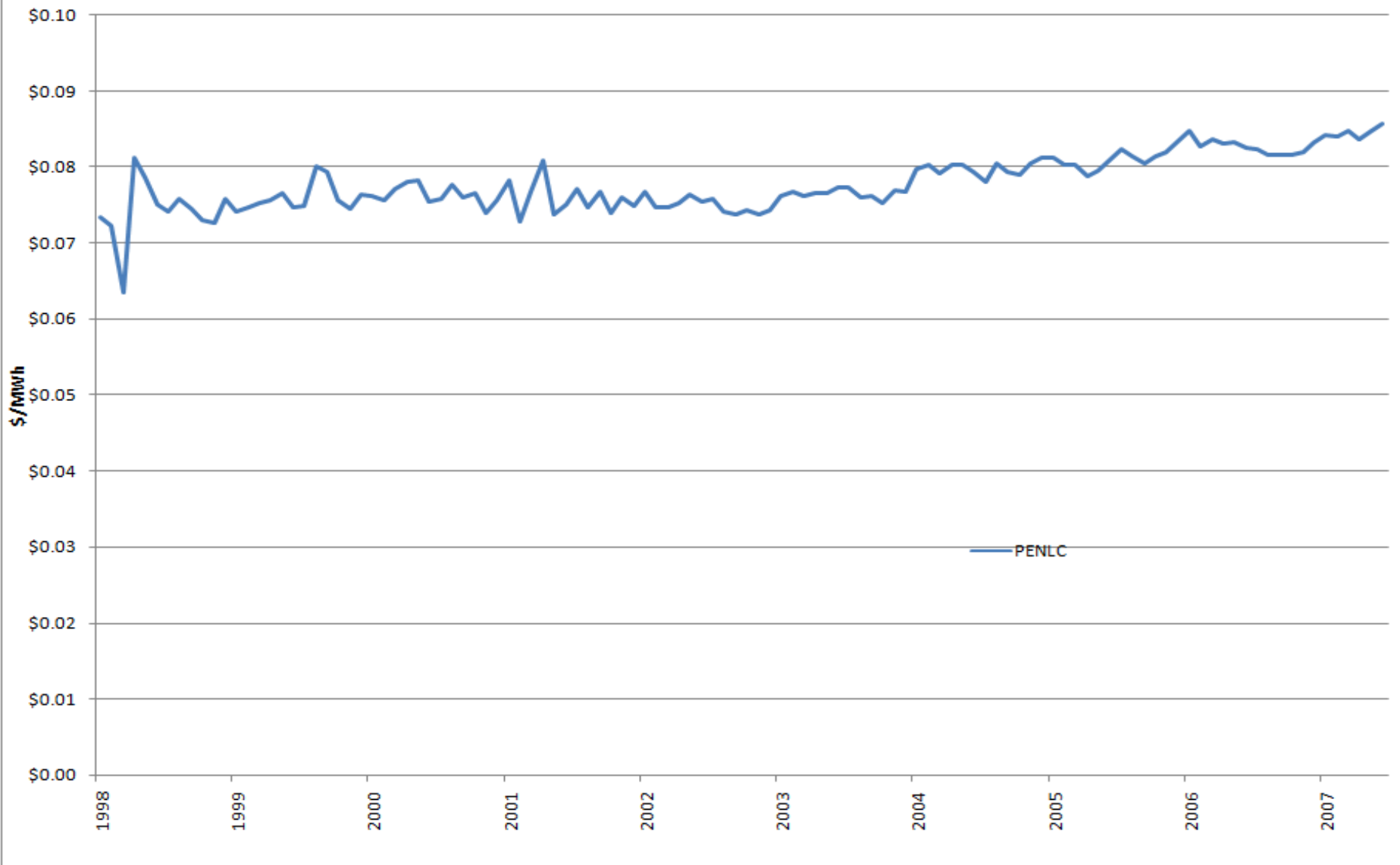
METED



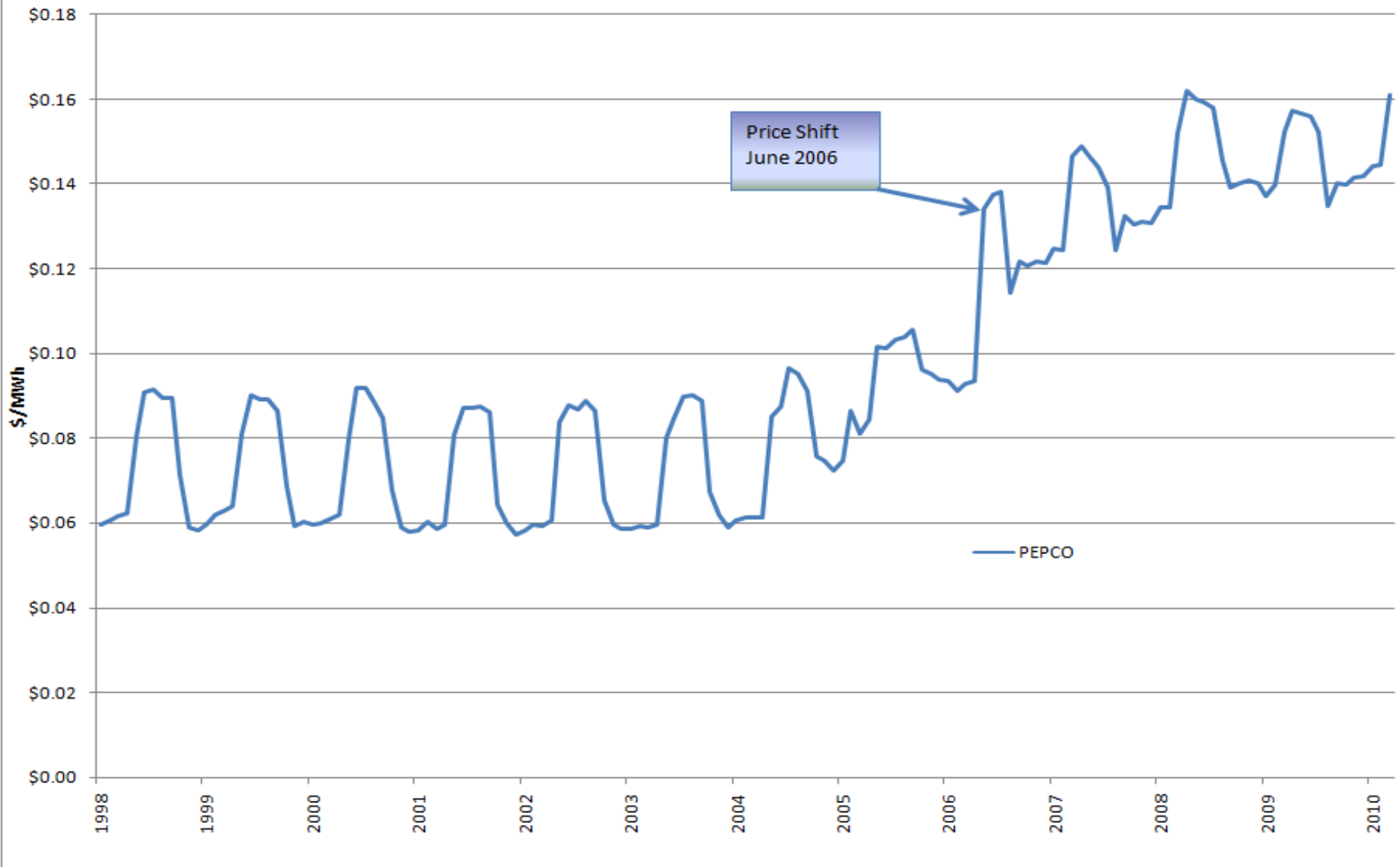
PECO



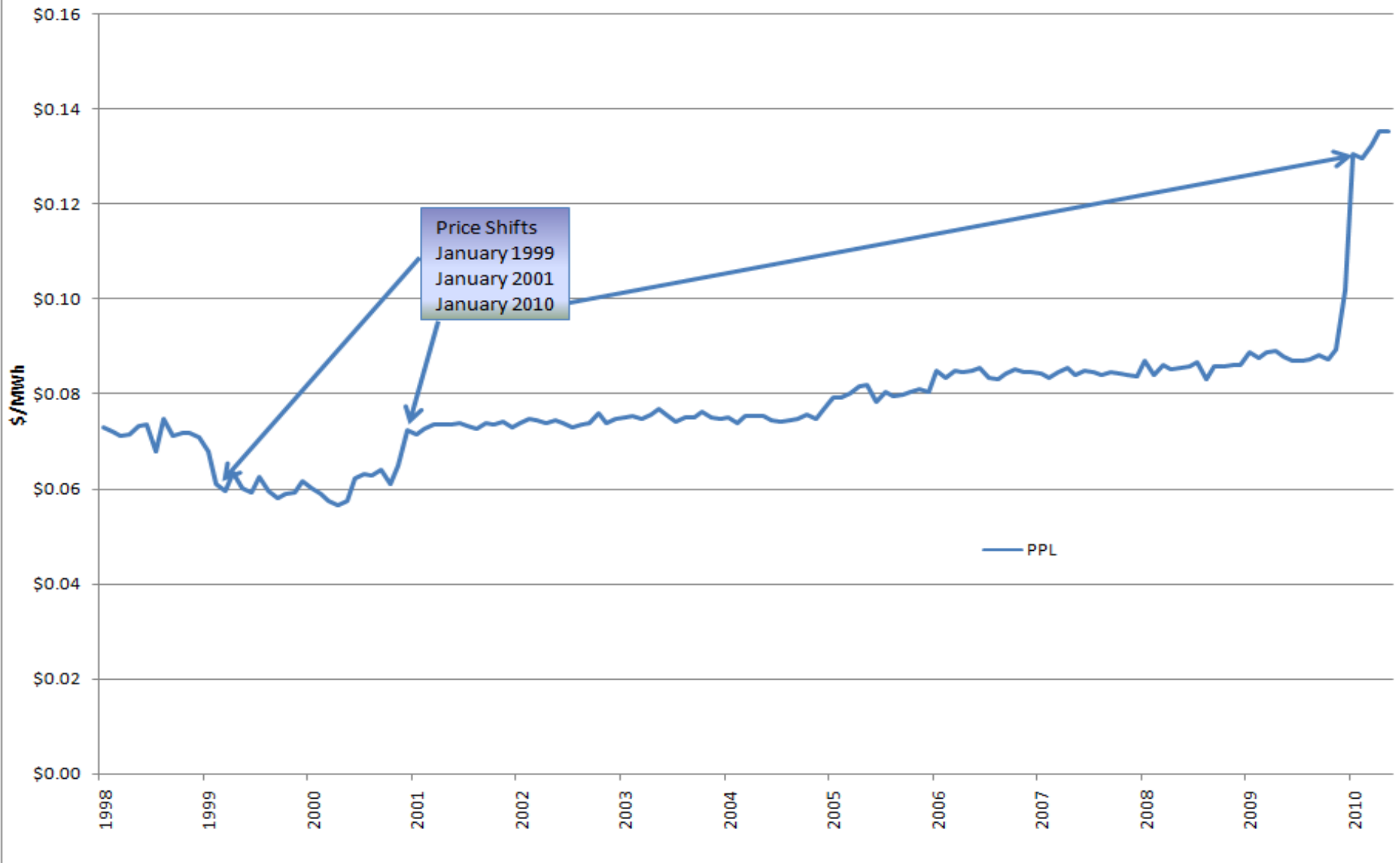
PENLC



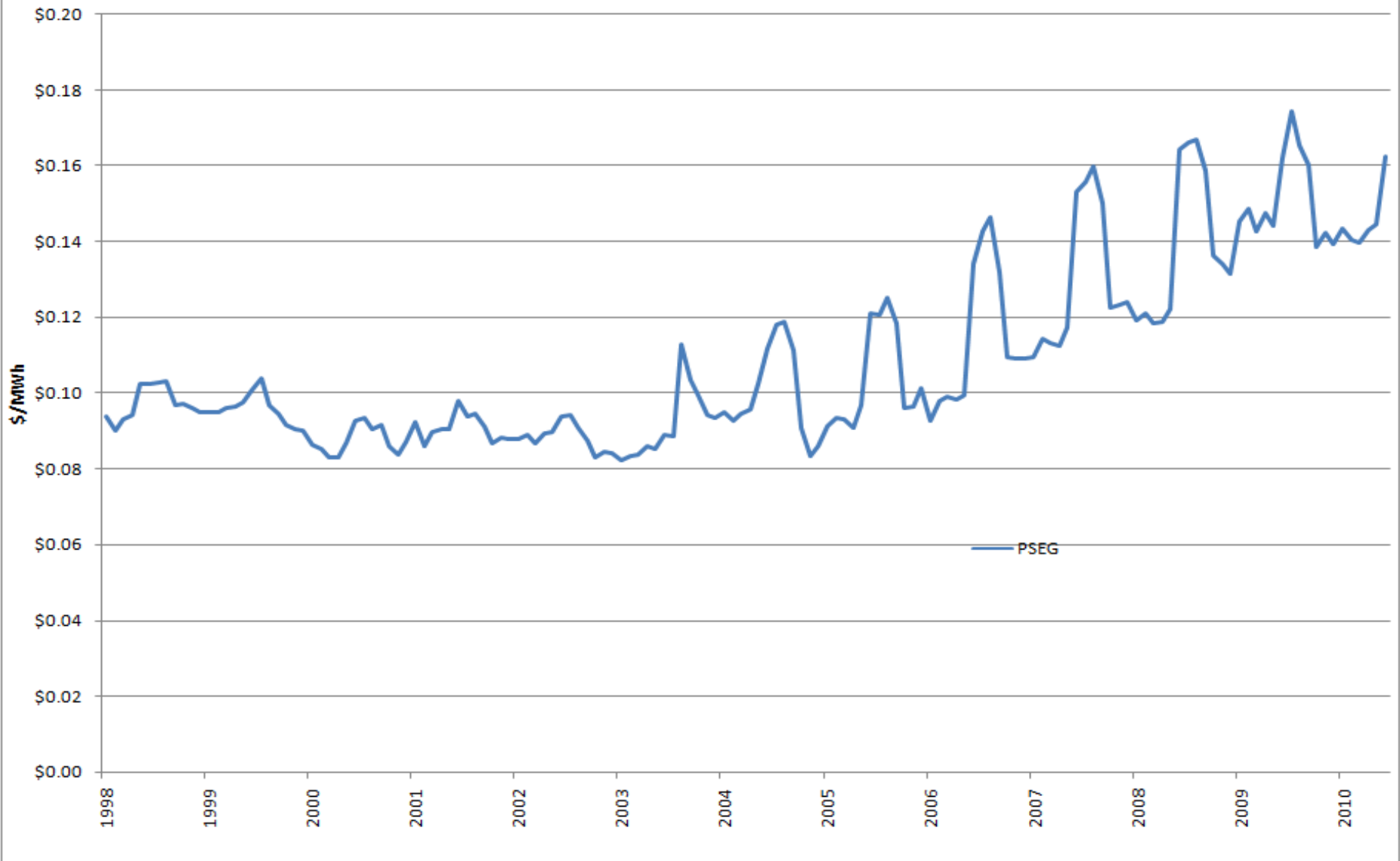
PEPCO



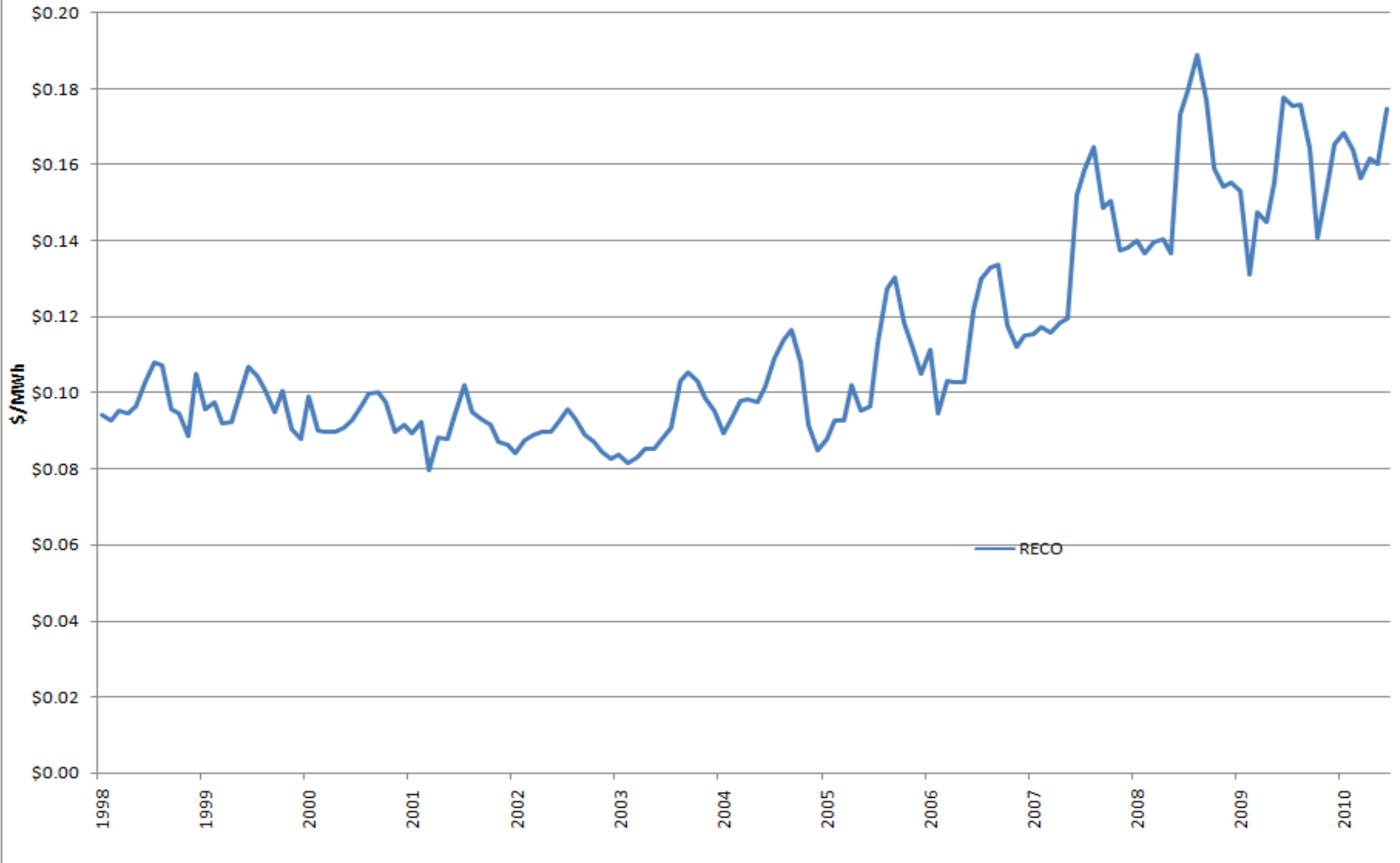
PPL



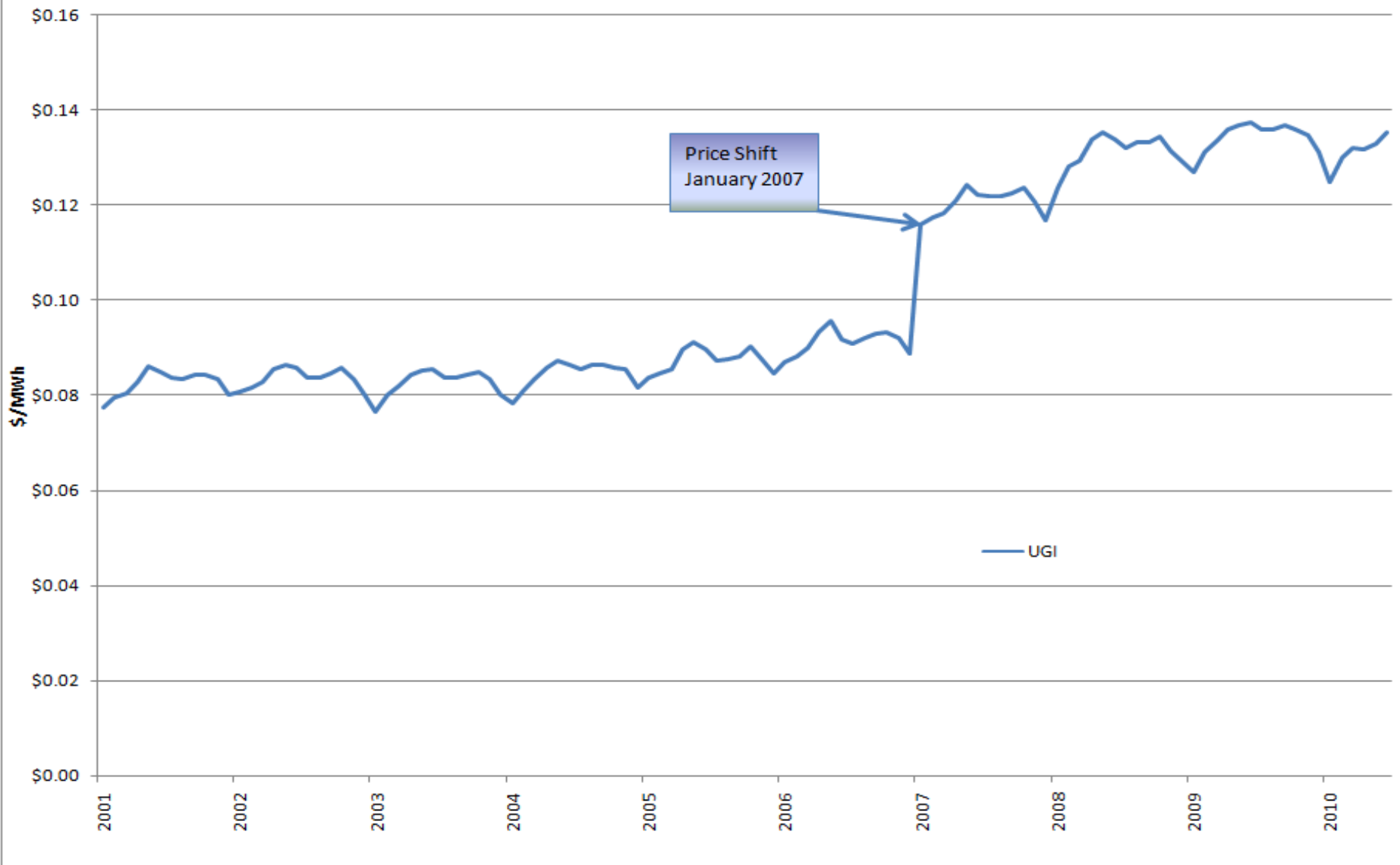
PSEG



RECO



UGI



VEPCO

