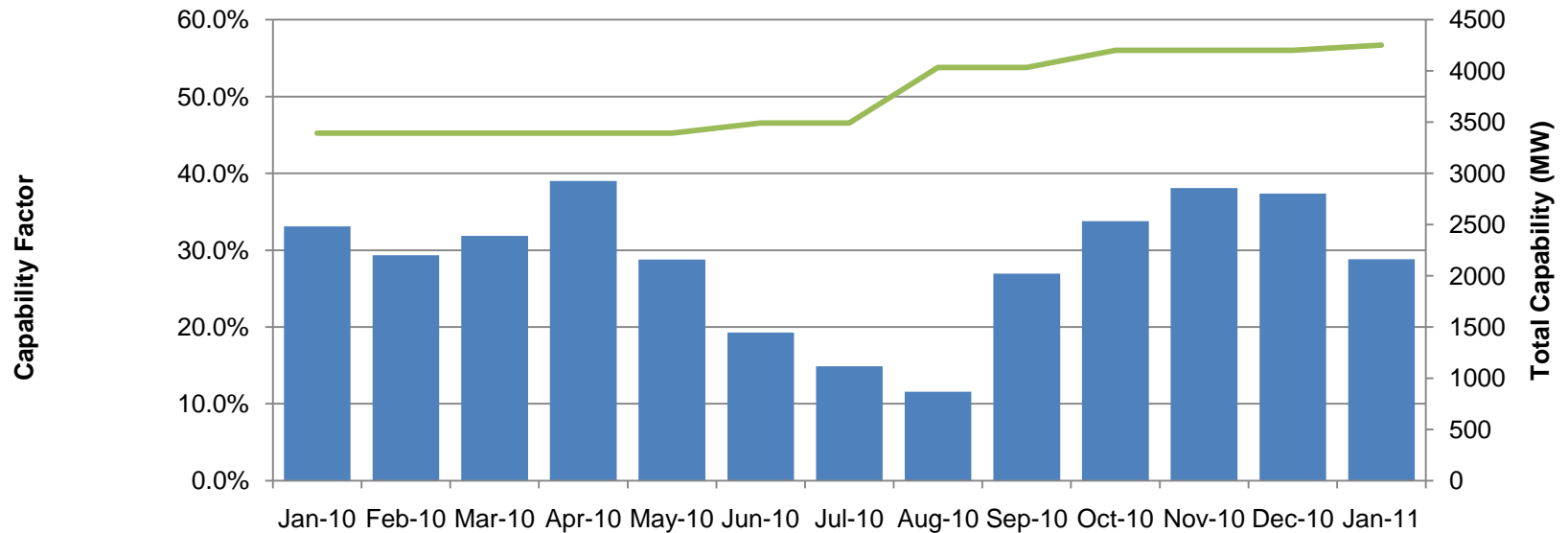


PJM Wind Power Statistics

Mean Wind Capability Factor

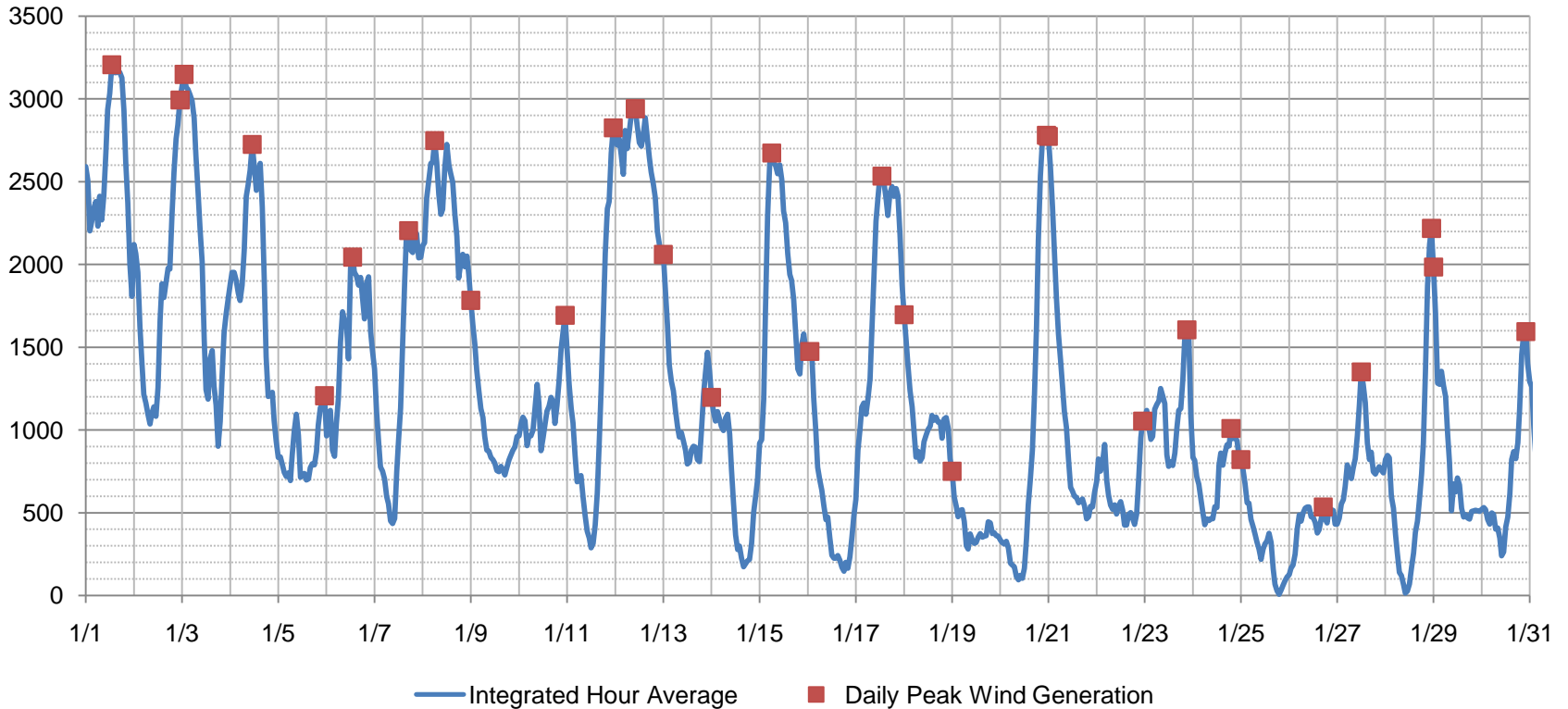


	Jan-10	Feb-10	Mar-10	Apr-10	May-10	Jun-10	Jul-10	Aug-10	Sep-10	Oct-10	Nov-10	Dec-10	Jan-11
■ Capability Factor	33.1%	29.4%	31.9%	39.0%	28.8%	19.3%	14.9%	11.6%	26.9%	33.8%	38.1%	37.4%	28.8%
— Total Capacity (MW)	3391.4	3391.4	3391.4	3391.4	3391.4	3490.4	3490.4	4031.8	4031.8	4200.5	4200.5	4200.5	4250.5
RTO Load (MW)	88900	87539	74637	68286	74022	89232	96767	92343	78348	68811	73659	89509	89778

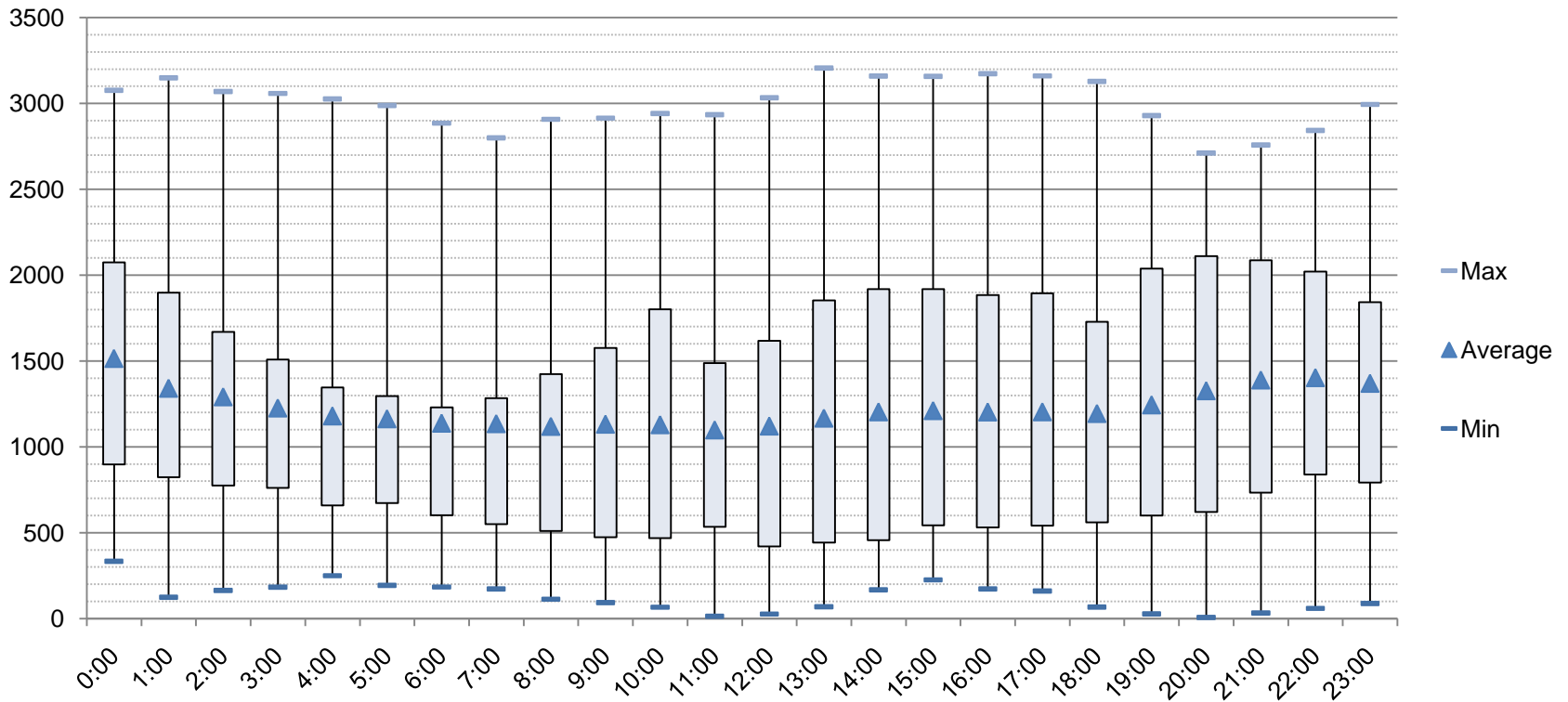
$$\text{Capability Wind Factor} = \frac{\text{Average Wind Generation}}{\text{Total Wind Capability}^*}$$

* Does not incorporate turbine outages

January Integrated Hourly Wind Generation (MW)

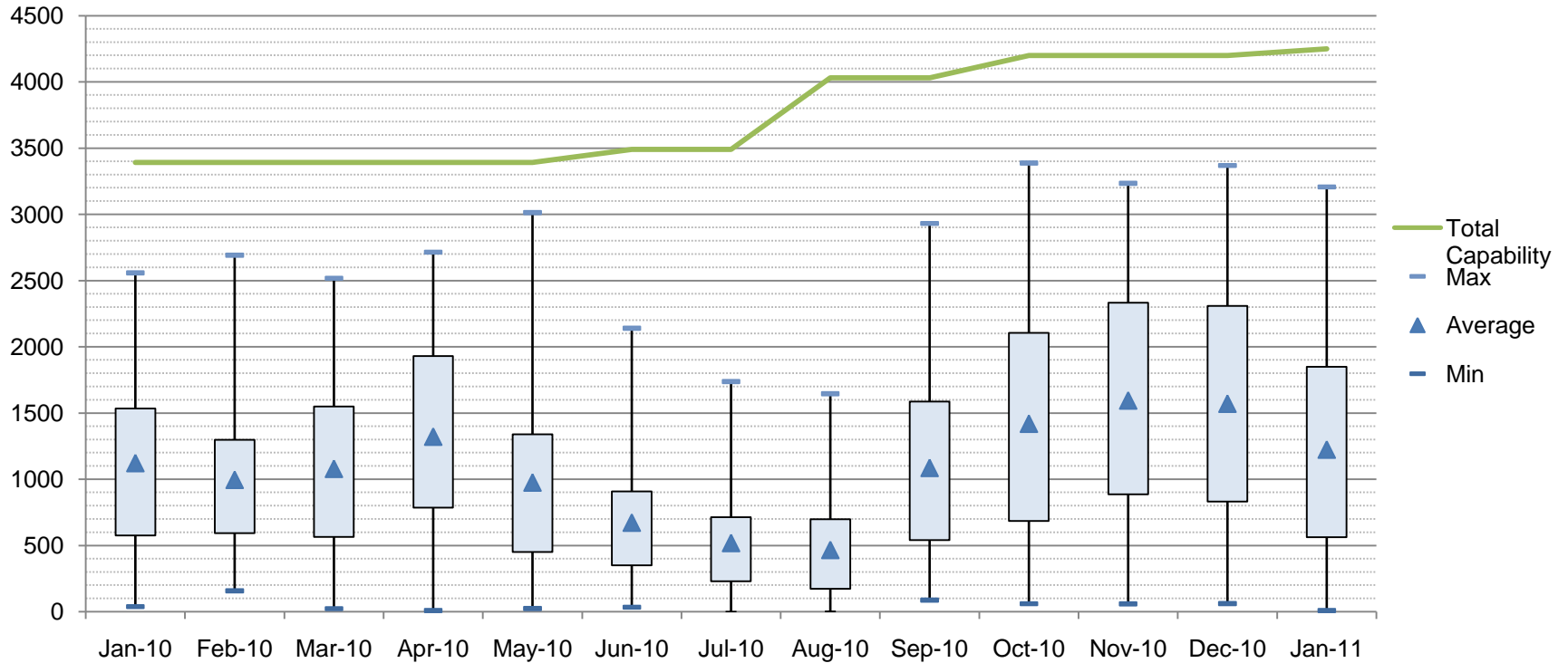


January Wind Generation (MWh)



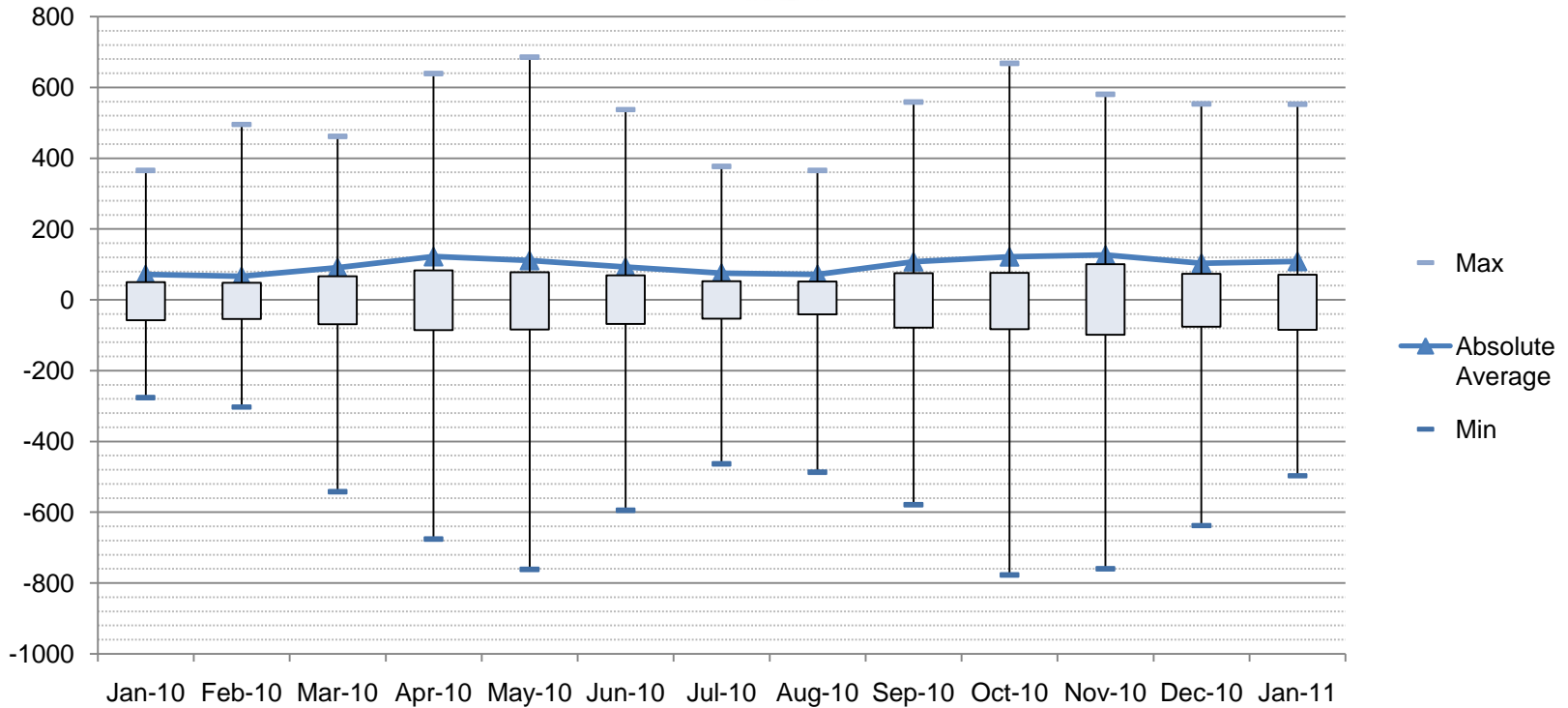
The area within the box depicts the distribution of measured points between the 25th and 75th percentile.

Monthly Integrated Hourly Wind Generation (MWh)



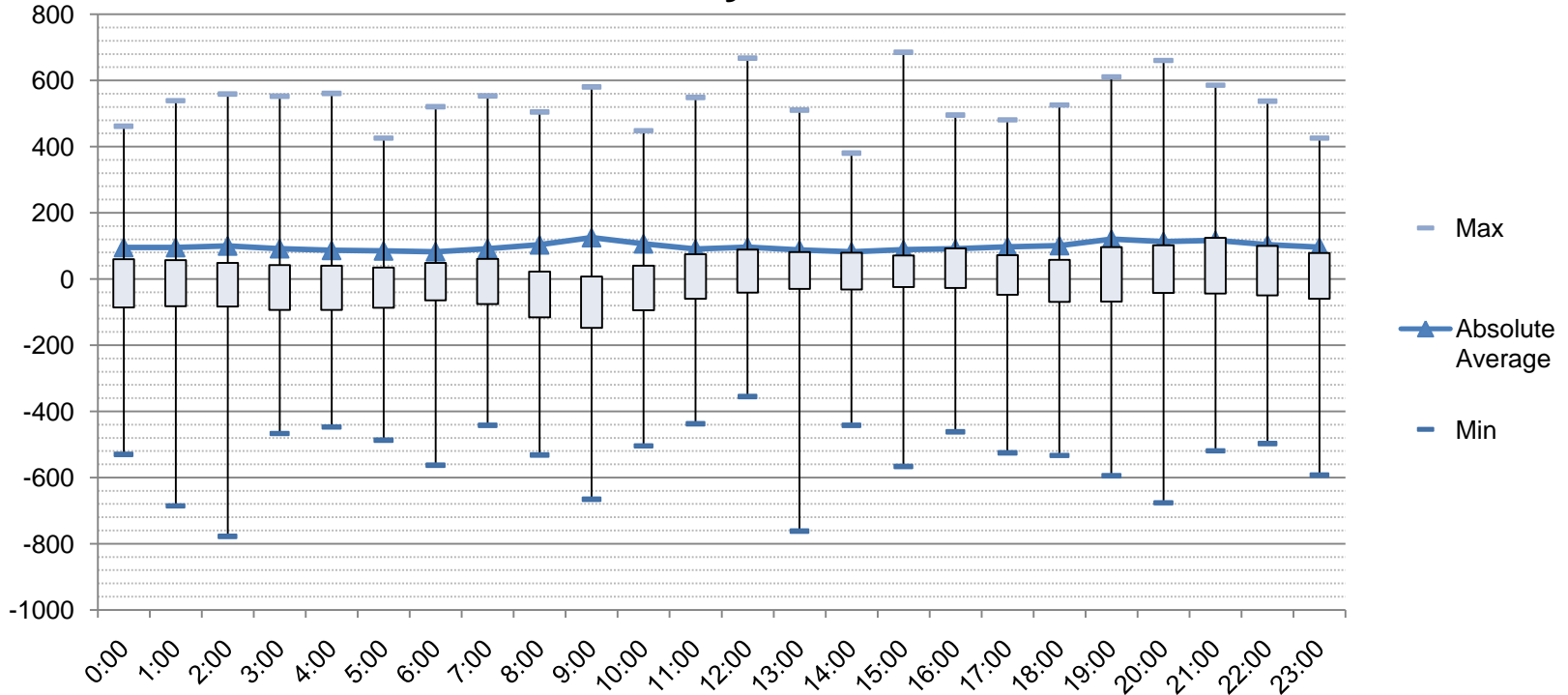
The area within the box depicts the distribution of measured points between the 25th and 75th percentile.

Monthly Integrated Hourly Wind Ramp (MW/hour)



The area within the box depicts the distribution of measured points between the 25th and 75th percentile.

13 Month Integrated Hourly Wind Ramp (MW/hour) January 2010-2011



The area within the box depicts the distribution of measured points between the 25th and 75th percentile.

Month	Maximum Timestamp	Maximum (MW)	RTO Load	Minimum Timestamp	Minimum (MW)	RTO Load
Dec-09	12/25/09 3:00	2432	70651	12/5/09 0:00	71	75053
Jan-10	1/25/10 19:00	2558	90610	1/22/10 14:00	37	88980
Feb-10	2/5/10 21:00	2691	94805	2/1/10 11:00	157	98156
Mar-10	3/25/10 15:00	2517	76002	3/17/10 12:00	22	77605
Apr-10	4/7/10 0:00	2714	64721	4/20/10 11:00	8	75325
May-10	5/8/10 12:00	3014	73007	5/29/10 12:00	23	82853
Jun-10	6/6/10 17:00	2139	91441	6/25/10 10:00	33	101908
Jul-10	7/23/10 18:00	1737	132092	7/8/10 10:00	-3	113175
Aug-10	8/5/10 18:00	1645	117664	8/19/10 11:00	-1	102887
Sep-10	9/24/10 11:00	2931	97990	9/18/10 16:00	87	76695
Oct-10	10/28/10 12:00	3387	79698	10/19/10 11:00	59	76813
Nov-10	11/23/10 1:00	3234	59357	11/11/10 13:00	58	76226
Dec-10	12/13/10 4:00	3368	76074	12/16/10 13:00	61	102718
Jan-11	1/1/11 13:00	3207	72701	1/25/11 19:00	8	97536

Month	Max 60 Minute Ramp-up Timestamp	Max 60 Minute Ramp-up (MW/hr)	RTO Load	Max 60 Minute Ramp-down Timestamp	Max 60 Minute Ramp-down (MW/hr)	RTO Load
Dec-09	12/2/09 16:00	425.03	84289.00	12/1/09 15:00	-346.48	78706.83
Jan-10	1/12/10 21:00	365.48	103376.08	1/30/10 12:00	-275.81	100997.06
Feb-10	2/9/10 16:00	495.48	92611.18	2/16/10 17:00	-302.75	94416.58
Mar-10	3/20/10 0:00	461.91	60446.06	3/27/10 19:00	-542.09	71928.52
Apr-10	4/24/10 15:00	639.46	65212.77	4/8/10 20:00	-676.11	83720.48
May-10	5/12/10 15:00	685.89	79517.31	5/12/10 13:00	-761.85	79924.19
Jun-10	6/18/10 22:00	537.41	87609.43	6/6/10 19:00	-594.34	86475.91
Jul-10	7/24/10 13:00	376.71	123184.37	7/23/10 19:00	-463.21	127359.54
Aug-10	8/4/10 17:00	365.55	124588.98	8/14/10 5:00	-486.67	67824.18
Sep-10	9/16/10 2:00	559.02	59802.80	9/4/10 19:00	-579.10	74899.27
Oct-10	10/21/10 12:00	668.18	76508.60	10/21/10 2:00	-777.73	57310.01
Nov-10	11/26/10 9:00	580.72	70716.60	11/25/10 2:00	-760.32	61224.04
Dec-10	12/29/10 7:00	553.49	92349.14	12/31/10 2:00	-638.01	70815.43
Jan-11	1/15/11 3:00	552.90	80149.61	1/23/11 22:00	-497.10	96653.82

Month	Max 15 Minute Ramp-up Timestamp	Max 15 Minute Ramp-up (MW/15 min)	Max 15 Minute Ramp-down Timestamp	Max 15 Minute Ramp-down (MW/15 min)
Jan-10	1/1/10 19:45	173.72	1/23/10 9:00	-301.56
Feb-10	2/9/10 16:45	180.93	2/16/10 17:45	-111.32
Mar-10	3/20/10 0:30	376.85	3/27/10 19:15	-254.73
Apr-10	4/3/10 13:00	311.72	4/25/10 23:30	-384.63
May-10	5/12/10 15:15	283.97	5/12/10 13:15	-475.92
Jun-10	6/22/10 0:30	313.43	6/6/10 20:45	-463.99
Jul-10	7/19/10 15:45	265.00	7/19/10 21:30	-250.12
Aug-10	8/14/10 4:15	308.92	8/4/10 8:30	-262.16
Sep-10	9/22/10 0:45	362.36	9/22/10 1:30	-318.97
Oct-10	10/24/10 11:45	279.18	10/26/10 9:45	-303.82
Nov-10	11/27/10 20:15	324.33	11/4/10 17:15	-327.74
Dec-10	12/31/10 6:45	402.64	12/31/10 2:15	-481.59
Jan-11	1/6/11 11:15	308.00	1/31/11 1:45	-590.23

Questions?

Robert Dropkin
(610) 666-3195
dropkr@pjm.com