



2012 Load Response Activity Report

April 2013

James McAnany
PJM Demand Side Response
April 9, 2013



Delivery Year 2012-2013 Active Participants in PJM Load Response Program: as of 04/09/2013 (page 1 of 2)

State	Zone	EDC	Economic Program		Emergency Energy Only		Emergency DR		Emergency Total MW	Emergency MWs Breakout	
			Sites	MW	Sites	MW	Sites	MW		Emergency Only	Both Emergency and Economic
DC	PEPCO	PEPCO	17	1.7			191	63.2	63.2	62.1	1.1
DE	DPL	DEMEC	3	0.8			24	8.6	8.6	7.6	1.1
DE	DPL	DOVDE					2	3.3	3.3	3.3	0.0
DE	DPL	DPL	10	56.9			149	86.2	86.2	58.9	27.4
DE	DPL	ODEC					5	2.3	2.3	2.3	0.0
IL	COMED	COMED	53	101.9			1166	775.3	775.3	625.5	149.7
IL	COMED	IMEAA1					2	36.8	36.8	36.8	0.0
IN	AEP	AEPSCT					61	275.9	275.9	275.9	0.0
IN	AEP	HEREC					1	19.2	19.2	19.2	0.0
IN	AEP	WVSDI					1	12.5	12.5	12.5	0.0
KY	DEOK	DEK					57	43.0	43.0	43.0	0.0
MD	APS	AETSAP	2	17.9			152	85.2	85.2	67.6	17.6
MD	APS	AETSHG					5	1.9	1.9	1.9	0.0
MD	BGE	BC	106	608.8			810	861.1	861.1	234.2	626.9
MD	DPL	DPL	8	29.9			223	82.0	82.0	47.0	34.9
MD	DPL	EASTON					5	2.9	2.9	2.9	0.0
MD	DPL	ODEC	1	0.5			29	9.3	9.3	8.6	0.7
MD	PEPCO	PEPCO	18	127.1			325	254.5	254.5	115.1	139.4
MD	PEPCO	SMECO	1	0.5			70	62.8	62.8	62.4	0.5
MI	AEP	AEPSCT					3	2.5	2.5	2.5	0.0
NC	DOM	DOMEDC	1	24.4					0.0	0.0	0.0
NJ	AECO	AE	13	38.0			227	90.9	90.9	50.5	40.4
NJ	AECO	VMEU	2	0.9			23	7.5	7.5	6.6	0.9
NJ	JCPL	AECI					1	0.2	0.2	0.2	0.0
NJ	JCPL	JCBGS	15	49.2			415	190.7	190.7	182.6	8.1
NJ	PSEG	PSEG	50	38.2			966	375.0	375.0	353.2	21.8
NJ	RECO	RECO					20	5.6	5.6	5.6	0.0
NY	PENELEC	PaElec					2	1.6	1.6	1.6	0.0
OH	AEP	AEPCLL					8	12.1	12.1	12.1	0.0
OH	AEP	AEPSCT	8	4.6			556	459.7	459.7	455.7	4.0
OH	AEP	AMPO					21	117.2	117.2	117.2	0.0
OH	AEP	BUCK					4	38.7	38.7	38.7	0.0
OH	ATSI	AMPO					34	300.9	300.9	300.9	0.0
OH	ATSI	CPP					19	77.4	77.4	77.4	0.0
OH	ATSI	OEEDC	9	79.4			550	545.6	545.6	482.2	63.3
OH	DAY	AMPO					13	41.7	41.7	41.7	0.0
OH	DAY	BUCK					1	3.4	3.4	3.4	0.0
OH	DAY	DAYEDC					132	61.5	61.5	61.5	0.0



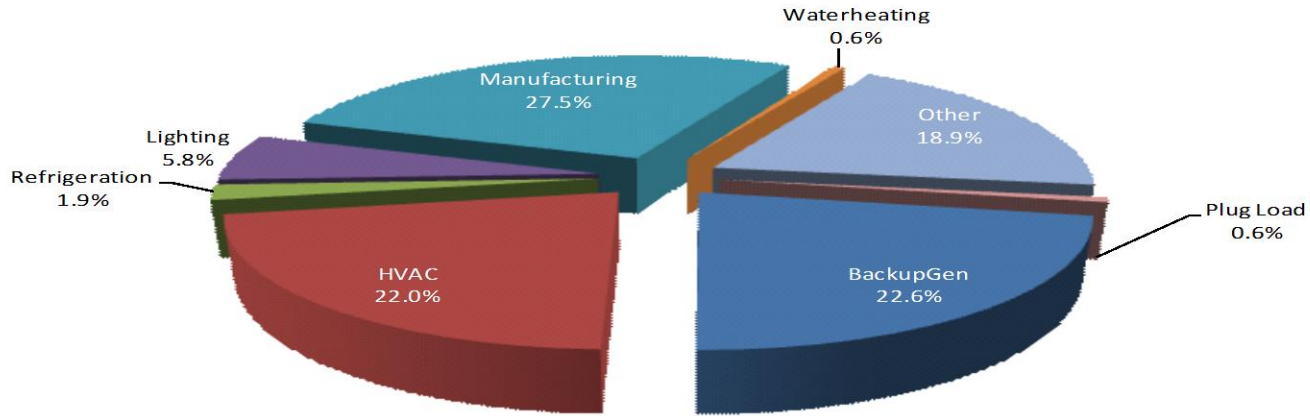
Delivery Year 2012-2013 Active Participants in PJM Load Response Program: as of 04/09/2013 (page 2 of 2)

State	Zone	EDC	Economic Program		Emergency Energy Only		Emergency DR		Emergency Total MW	Emergency MWs Breakout	
			Sites	MW	Sites	MW	Sites	MW		Emergency Only	Both Emergency and Economic
OH	DEOK	DEOHIO	2	51.0			216	252.4	252.4	149.1	103.3
PA	APS	AECI					5	2.9	2.9	2.9	0.0
PA	APS	AETSAP	14	28.3			545	313.0	313.0	277.9	35.0
PA	APS	CHBDTE					1	0.4	0.4	0.4	0.0
PA	ATSI	PAPWR	1	0.1			39	57.2	57.2	57.2	0.0
PA	DUQ	DLCO	18	41.1	1	4.0	315	116.8	120.8	92.0	28.9
PA	METED	AECI					1	1.6	1.6	1.6	0.0
PA	METED	MetEd	50	64.0			444	200.8	200.8	144.9	55.8
PA	PECO	PE	253	133.8			1308	442.5	442.5	319.4	123.1
PA	PENELEC	AECI					17	16.9	16.9	16.9	0.0
PA	PENELEC	PaElec	17	25.5			544	278.5	278.5	266.5	12.0
PA	PENELEC	WELLSB					5	0.7	0.7	0.7	0.0
PA	PPL	AMPO					7	3.1	3.1	3.1	0.0
PA	PPL	CTZECL					8	3.2	3.2	3.2	0.0
PA	PPL	PPL	292	329.1			1279	620.0	620.0	364.2	255.8
PA	PPL	UGI-UI					19	8.6	8.6	8.6	0.0
TN	AEP	AEPSCT	1	30.0			3	5.7	5.7	5.7	0.0
VA	AEP	AEPSCT	2	17.0			163	166.3	166.3	140.1	26.2
VA	AEP	AMPO					10	22.6	22.6	22.6	0.0
VA	APS	AETSAP					1	0.1	0.1	0.1	0.0
VA	APS	AMPO					3	1.1	1.1	1.1	0.0
VA	APS	ODEC					38	26.1	26.1	26.1	0.0
VA	DOM	CVEC					4	1.2	1.2	1.2	0.0
VA	DOM	DOMEDC	44	101.7			744	472.6	472.6	428.7	43.9
VA	DOM	DOMVME					16	96.9	96.9	96.9	0.0
VA	DOM	NVEC	5	43.2			10	15.1	15.1	0.5	14.6
VA	DOM	ODEC	2	72.2			28	79.1	79.1	7.1	72.0
VA	DPL	ODEC					10	1.6	1.6	1.6	0.0
WV	AEP	AEPSCT	3	48.8			286	203.4	203.4	167.9	35.5
WV	AEP	APWVP					8	2.1	2.1	2.1	0.0
WV	APS	AETSAP	3	37.0			260	117.5	117.5	87.0	30.6
Total			1,024	2,204	1	4	12,610	8,548	8,552	6,577	1,975

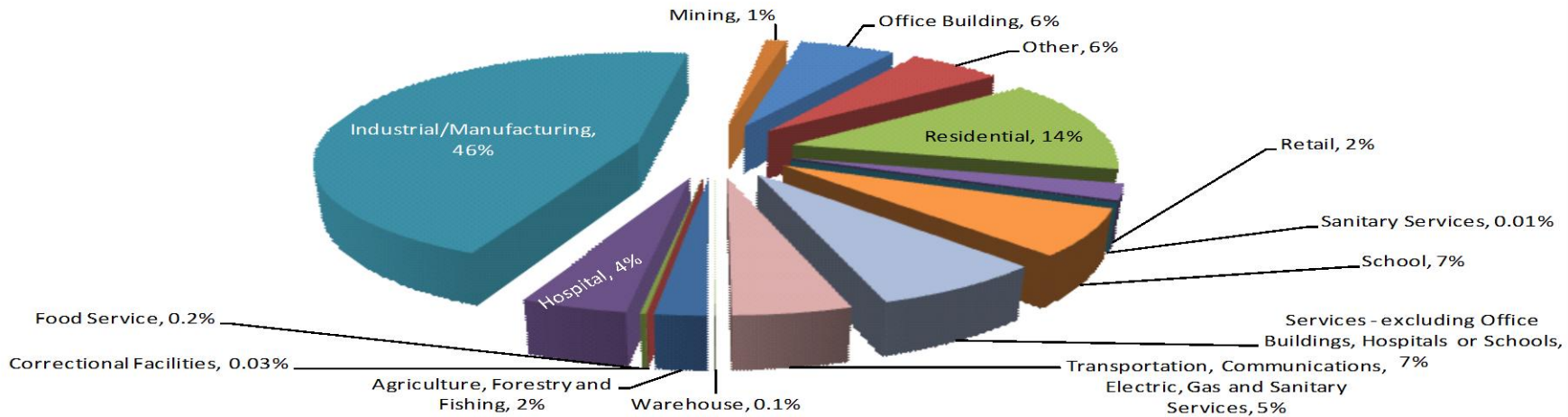
Note:

- 1) Data as of 04/09/2013.
- 2) Emergency MW are in ICAP.
- 3) Economic MW are CSP reported Load Reduction values.
- 4) Residential Direct Load Control (DLC) registrations reported as one site not a total number of end use customers in that program.

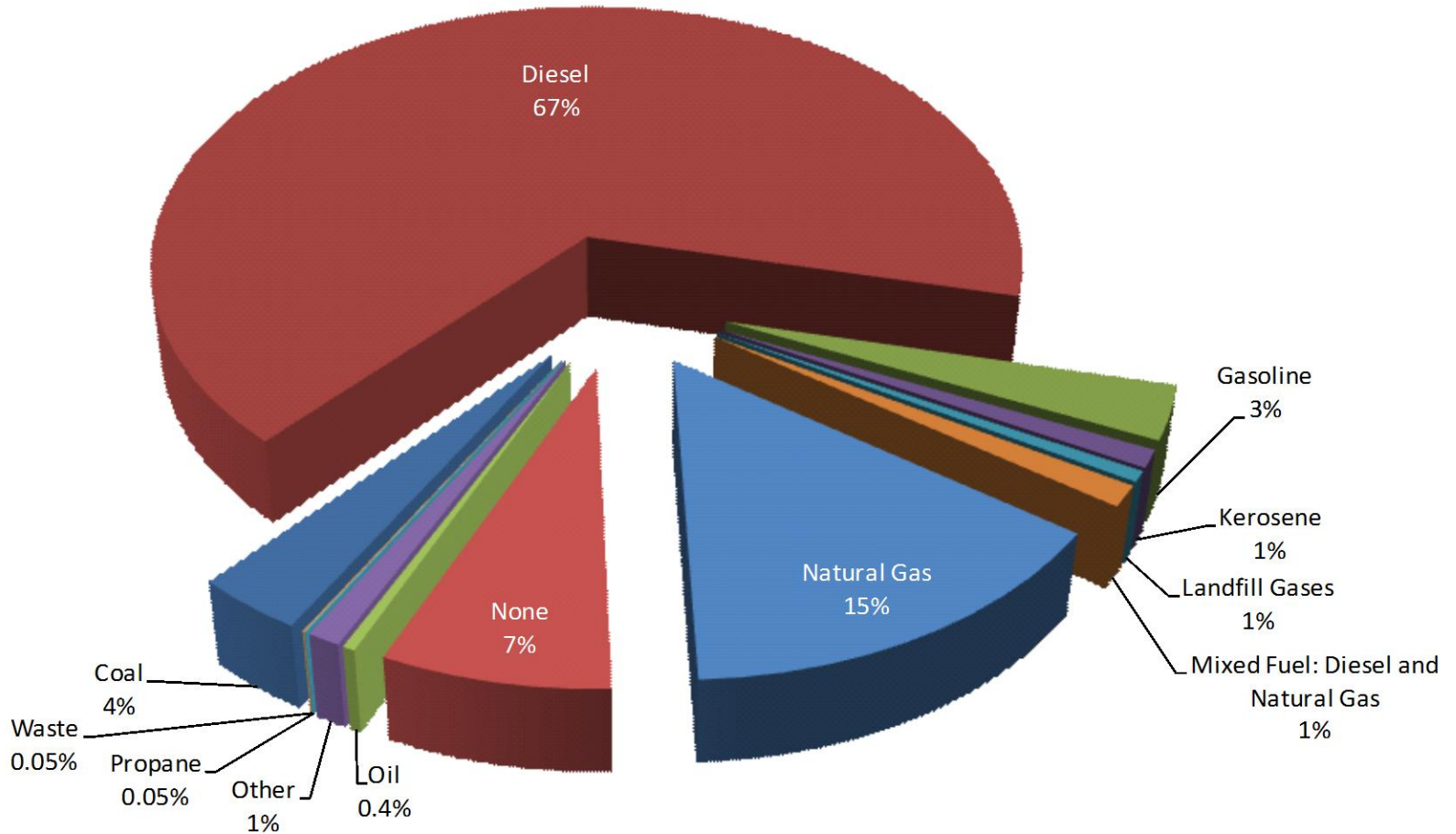
Sources



Business Segments



Note: data reported by CSPs having confirmed Load Management resources for DY 2012/2013.



Note: data reported by CSPs having confirmed Load Management resources for DY 2012/2013.



SYNCHRONOUS RESERVES

Sites												
Zone	JAN	FEB	MAR	APR	MAY	JUN	JUL	AUG	SEP	OCT	NOV	DEC
RFC Mid-Atlantic	91	96	98	76	86	86	101	112	115	122	126	141
RFC Non-Mid-Atlantic	2	2	1	0	0	0	0	0	0	0	0	0
RTO Total	93	98	99	76	86	86	101	112	115	122	126	141

Average Number of Unique Participating Sites per Month: 105

MW												
Zone	JAN	FEB	MAR	APR	MAY	JUN	JUL	AUG	SEP	OCT	NOV	DEC
RFC Mid-Atlantic	359	382	453	393	402	386	404	409	413	414	415	419
RFC Non-Mid-Atlantic	26	26	24	0	0	0	0	0	0	0	0	0
RTO Total	385	408	478	393	402	386	404	409	413	414	415	419

Average MW per Month: 410

REGULATION

Sites												
Zone	JAN	FEB	MAR	APR	MAY	JUN	JUL	AUG	SEP	OCT	NOV	DEC
RTO Total	2	2	26	26	26	28	28	29	29	29	29	30

Average Number of Unique Participating Sites per Month: 24

MW												
Zone	JAN	FEB	MAR	APR	MAY	JUN	JUL	AUG	SEP	OCT	NOV	DEC
RTO Total	0.2	0.2	0.5	0.5	0.5	3.7	3.7	4.5	4.5	4.5	4.5	4.8

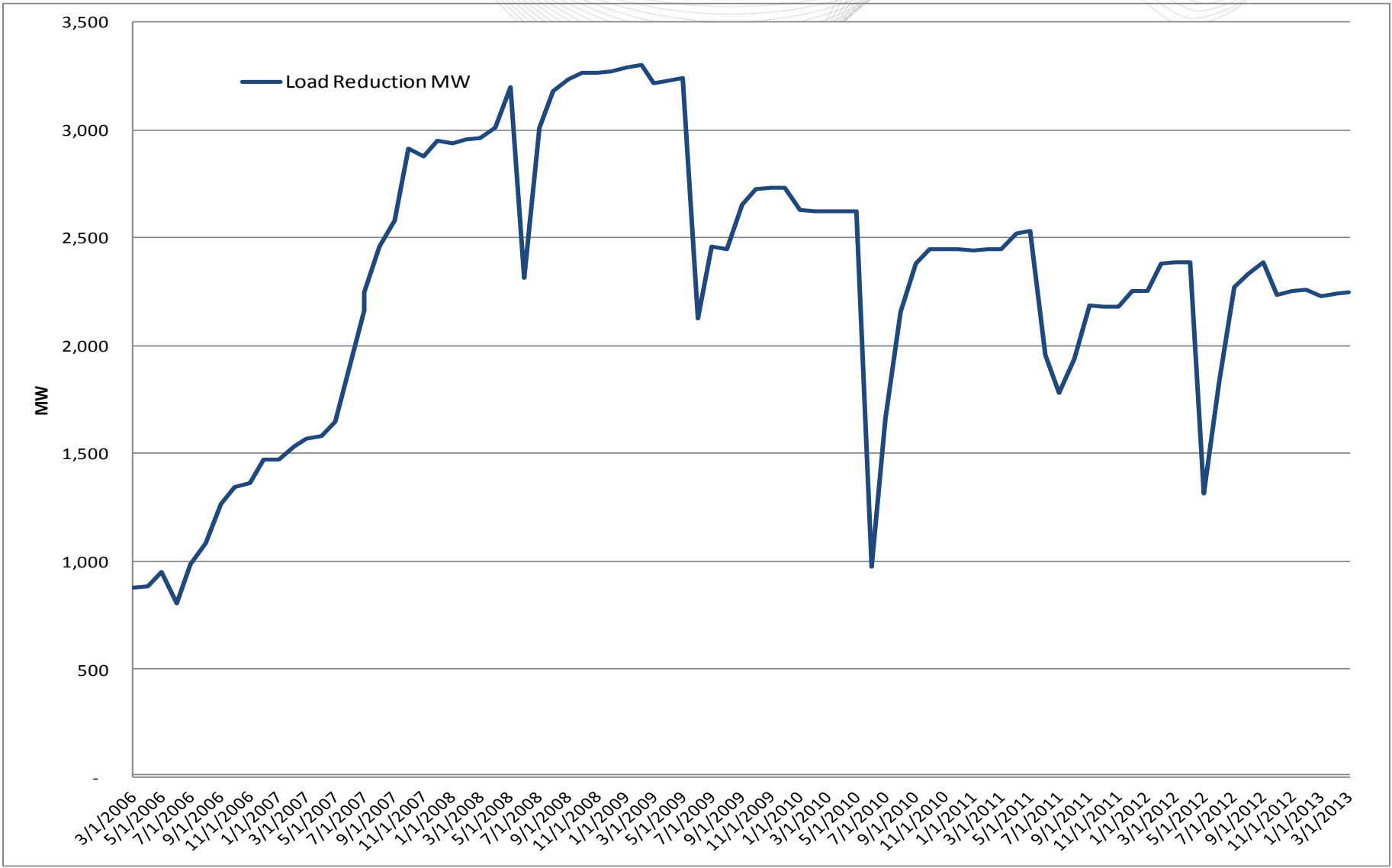
Average MW per Month: 2.7

Note:

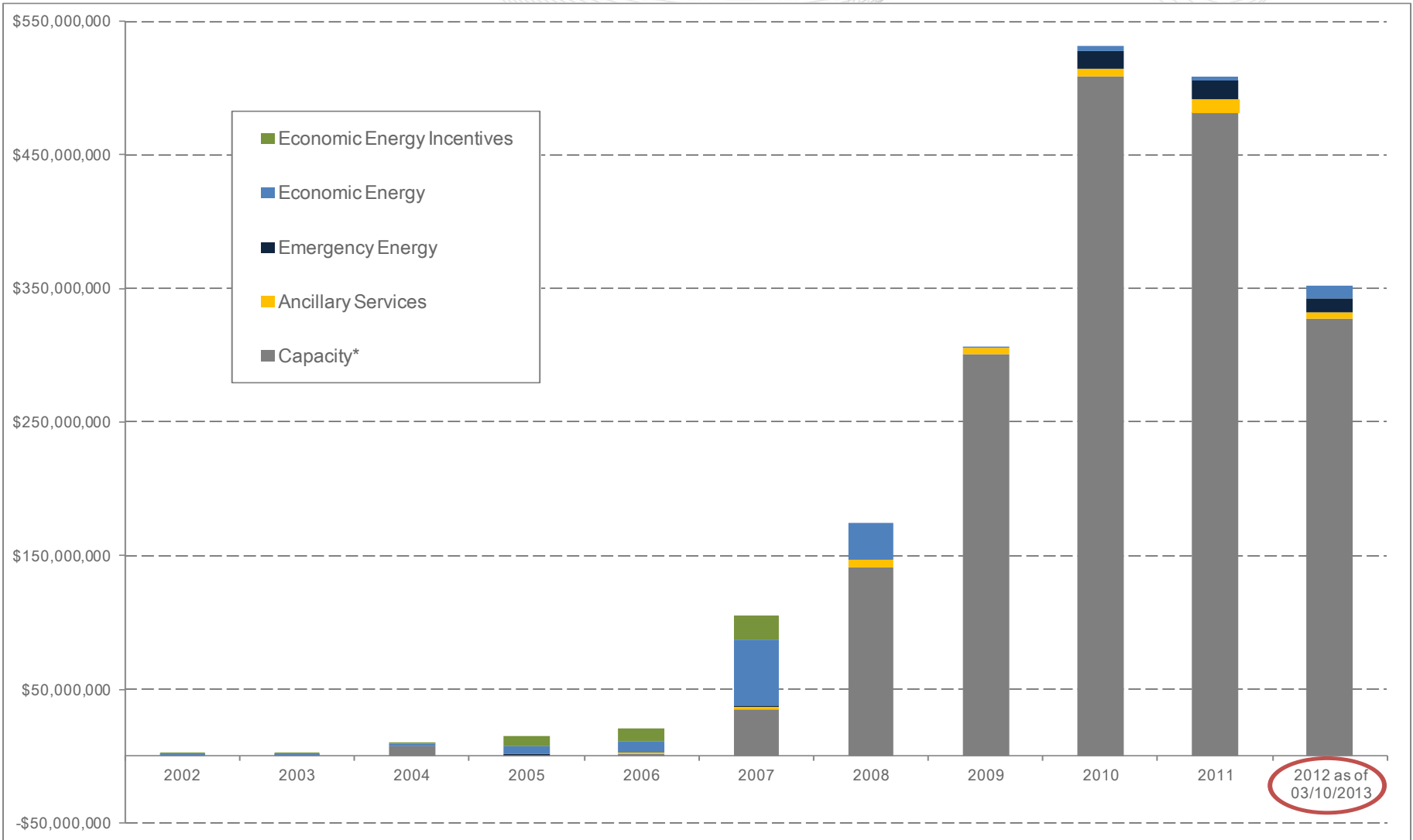
- 1) Data as of 02/13/2013.
- 2) MW are CSP reported Load Reduction values.



PJM Economic Load Response Capability (MW): 3/1/2006-03/10/2013



PJM Demand Side Response Estimated Revenue



*Capacity Net Revenue inclusive of Capacity Credits and Charges.



2012 Economic Demand Side Response Monthly Registration Participation

State	Zone	JAN	FEB	MAR	APR	MAY	JUN	JUL	AUG	SEP	OCT	NOV	DEC
DE	DPL						1	2	2	2	1		
IL	COMED				1	2	11	12	11	8	2	5	2
MD	BGE						3	41	38			37	
	DPL						3	3					
	PEPCO						4	4	5				
NC	DOM						1	1	1	1			
NJ	AECO							4					
	JCPL						1	1					
	PSEG				4	4	6	11	8	6	6	2	
OH	AEP						2	1					
	ATSI						3	2					
PA	APS						32	33	27	28	1		
	ATSI						1	1	2	2			
	DUQ				1		14	13	19				
	METED	1					18	19	20	15	1	1	1
	PECO	2		1	2	5	100	106	85	48	10	7	3
	PENELEC				2	2	21	21	17	7	2	2	
	PPL					8	114	110	126	7	2	2	1
VA	AEP						1						
	DOM	3	4	2	2	3	12	16	10	9	4	6	2
WV	AEP						1	2	1				
	APS					1	1	1	1	1	1	2	1
Total		6	4	3	12	25	350	404	373	134	30	64	10

Average Number of Unique Participating Registrations per Month 118

2012 Economic Demand Side Response Monthly Registration Participation Day-Ahead Activity

State	Zone	JAN	FEB	MAR	APR	MAY	JUN	JUL	AUG	SEP	OCT	NOV	DEC
DE	DPL						1	1	1	1			
IL	COMED						2	2	2	1		1	
MD	BGE						1	1					
	DPL												
	PEPCO								1				
NC	DOM						1	1	1	1			
NJ	AECO												
	JCPL						1	1					
	PSEG				2	2	3	4	4	3	3		
OH	AEP						1	1					
	ATSI												
PA	APS						1	1					
	ATSI												
	DUQ												
	METED	1					1	2	2	1			
	PECO				1	2	5	4	3	2	2	2	
	PENELEC				1	1	2	2	1	1	1		
	PPL						1	8	3	1		1	
VA	AEP												
	DOM				1	1	3	4	2	3	1		1
WV	AEP						1	1	1				
	APS					1						1	1
Total		1	0	0	5	7	24	33	21	14	7	5	2

Average Number of Unique Participating Registrations per Month 10



2012 Economic Demand Side Response Monthly Registration Participation Real-Time Activity

State	Zone	JAN	FEB	MAR	APR	MAY	JUN	JUL	AUG	SEP	OCT	NOV	DEC
DE	DPL							1	1	1	1		
IL	COMED				1	2	9	10	9	7	2	4	2
MD	BGE						2	40	38			37	
	DPL						3	3					
	PEPCO						4	4	4				
NC	DOM												
NJ	AECO							4					
	JCPL												
	PSEG				2	2	3	7	4	3	3	2	
OH	AEP						1						
	ATSI						3	2					
PA	APS						31	32	27	28	1		
	ATSI						1	1	2	2			
	DUQ				1		14	13	19				
	METED						17	17	18	14	1	1	
	PECO	2		1	1	3	95	102	82	46	8	5	1
	PENELEC				1	1	19	19	16	6	1	2	3
	PPL					8	113	102	123	6	2	1	1
VA	AEP						1						
	DOM	3	4	2	1	2	9	12	8	6	3	6	1
WV	AEP							1					
	APS						1	1	1	1	1	1	
Total		5	4	3	7	18	326	371	352	120	23	59	8

Average Number of Unique Participating Registrations per Month 108



2012 Economic Demand Side Response Monthly MWh Reductions

State	Zone	JAN	FEB	MAR	APR	MAY	JUN	JUL	AUG	SEP	OCT	NOV	DEC
DE	DPL						17	48	20	13	7		
IL	COMED				10	107	1,737	3,247	1,609	830	51	475	133
MD	BGE						20	805	179			18	
	DPL						82	99					
	PEPCO						359	363	329				
NC	DOM						2,912	5,800	1,071	72			
NJ	AECO							98					
	JCPL						324	1,738					
	PSEG				1,477	1,550	2,374	6,264	4,918	3,182	2,627	196	
OH	AEP						-1	-1					
	ATSI						61	29					
PA	APS						3,304	5,854	2,291	295	1,270		
	ATSI						7	9	4	1			
	DUQ						37	2	-1				
	METED	4					374	1,729	1,395	82	16	18	36
	PECO	15		1	18	43	1,394	3,587	2,195	807	403	195	50
	PENELEC				1,343	839	1,328	1,763	1,621	1,074	1,400	92	
	PPL					3	820	2,673	1,541	12	17	9	0
VA	AEP												
	DOM	251	392	366	2,505	6,132	8,358	8,587	7,444	7,398	6,079	4,834	3,486
WV	AEP						22	135					
	APS					43	86	701	1,267	186	868	484	174
Total		270	392	367	5,353	8,716	23,616	43,531	25,884	13,950	12,738	6,321	3,880

Total MWh: 145,019



2012 Economic Demand Side Response Monthly MWh Reductions Day-Ahead Activity

State	Zone	JAN	FEB	MAR	APR	MAY	JUN	JUL	AUG	SEP	OCT	NOV	DEC
DE	DPL						17	42	6	8			
IL	COMED						773	1,311	346	171			
MD	BGE						18	83					
	DPL												
	PEPCO								2				
NC	DOM						2,912	5,800	1,071	72			
NJ	AECO												
	JCPL						324	1,738					
	PSEG				1,462	1,424	2,314	5,475	1,551	1,863	173		
OH	AEP						-1	-1					
	ATSI												
PA	APS						373	302					
	ATSI												
	DUQ												
	METED	4					253	1,589	1,043	19			
	PECO				17	24	263	1,826	707	480	155	141	
	PENELEC				1,343	704	1,149	1,337	489	614	160		
	PPL						65	185	107	0			
VA	AEP												
	DOM				2,016	4,785	3,617	3,084	481	1,432	681		1,025
WV	AEP						22	-18					
	APS					43						164	174
Total		4	0	0	4,839	6,981	12,100	22,752	5,802	4,658	1,169	306	1,199

Total Day Ahead MWh: 59,810



2012 Economic Demand Side Response Monthly MWh Reductions Real-Time Activity

State	Zone	JAN	FEB	MAR	APR	MAY	JUN	JUL	AUG	SEP	OCT	NOV	DEC
DE	DPL							7	15	5	7		
IL	COMED				10	107	964	1,936	1,263	659	51	475	133
MD	BGE						1	723	179			18	
	DPL						82	99					
	PEPCO						359	363	327				
NC	DOM												
NJ	AECO							98					
	JCPL												
	PSEG				14	126	59	790	3,366	1,318	2,454	196	
OH	AEP						0						
	ATSI						61	29					
PA	APS						2,931	5,552	2,291	295	1,270		
	ATSI						7	9	4	1			
	DUQ						37	2	-1				
	METED						121	140	351	63	16	18	36
	PECO	15		1	1	18	1,132	1,761	1,489	327	248	54	50
	PENELEC				-1	135	179	427	1,133	460	1,240	92	
	PPL					3	755	2,488	1,435	12	17	9	0
VA	AEP												
	DOM	251	392	366	489	1,346	4,741	5,503	6,963	5,967	5,398	4,834	2,461
WV	AEP							152					
	APS						86	701	1,267	186	868	320	
Total		266	392	367	514	1,735	11,516	20,779	20,082	9,292	11,569	6,016	2,680

Total Real Time MWh: 85,210



2012 Economic Demand Side Response Monthly Net CSP Credits

State	Zone	JAN	FEB	MAR	APR	MAY	JUN	JUL	AUG	SEP	OCT	NOV	DEC
DE	DPL						\$ 1,688	\$ 4,969	\$ 1,535	\$ 877	\$ 330		
IL	COMED				\$ 334	\$ 4,818	\$ 58,512	\$ 214,929	\$ 103,397	\$ 51,333	\$ 1,641	\$ 20,989	\$ 4,710
MD	BGE						\$ 4,225	\$ 160,724	\$ 16,046				
	DPL						\$ 8,349	\$ 20,118					
	PEPCO						\$ 27,127	\$ 74,033	\$ 17,629				
NC	DOM						\$ 242,566	\$ 573,056	\$ 90,499	\$ 20,658			
NJ	AECO							\$ 20,555					
	JCPL						\$ 39,398	\$ 205,242					
	PSEG				\$ 45,257	\$ 67,233	\$ 115,339	\$ 391,845	\$ 260,905	\$ 144,994	\$ 122,527	\$ 8,339	
OH	AEP						\$ 159	\$ (109)					
	ATSI						\$ 2,173	\$ 5,218					
PA	APS						\$ 189,278	\$ 452,045	\$ 154,468	\$ 22,680	\$ 65,528		
	ATSI						\$ 340	\$ 966	\$ 260	\$ 76			
	DUQ						\$ 2,793	\$ 151	\$ 88				
	METED	\$ 133					\$ 36,005	\$ 87,722	\$ 73,346	\$ 6,203	\$ 787	\$ 664	\$ 12
	PECO	\$ 395		\$ 17	\$ 580	\$ 1,405	\$ 89,501	\$ 311,011	\$ 135,796	\$ 51,227	\$ 18,555	\$ 9,435	\$ 1,876
	PENELEC				\$ 42,955	\$ 49,607	\$ 73,944	\$ 134,515	\$ 74,507	\$ 45,357	\$ 64,532	\$ 3,848	
	PPL					\$ 127	\$ 65,303	\$ 292,057	\$ 83,073	\$ 1,380	\$ 559	\$ (1,054)	\$ 13
VA	AEP												
	DOM	\$ 8,137	\$ 14,994	\$ 6,732	\$ 106,270	\$ 359,924	\$ 492,093	\$ 768,064	\$ 470,570	\$ 350,000	\$ 295,107	\$ 293,400	\$ 123,044
WV	AEP						\$ 1,309	\$ 11,919	\$ (6)				
	APS					\$ 1,643	\$ 4,937	\$ 41,998	\$ 56,430	\$ 9,928	\$ 40,280	\$ 23,084	\$ 6,029
Total		\$ 8,664	\$ 14,994	\$ 6,749	\$ 195,396	\$ 484,756	\$ 1,455,040	\$ 3,771,027	\$ 1,538,545	\$ 704,712	\$ 609,844	\$ 358,706	\$ 135,684

Total CSP Credits: \$9,284,118



2012 Economic Demand Side Response Monthly Net CSP Credits Day-Ahead Activity

State	Zone	JAN	FEB	MAR	APR	MAY	JUN	JUL	AUG	SEP	OCT	NOV	DEC
DE	DPL						\$ 1,688	\$ 4,530	\$ 413	\$ 460			
IL	COMED						\$ 25,739	\$ 80,703	\$ 23,970	\$ 9,750		\$ (1,700)	
MD	BGE						\$ 4,077	\$ 9,932					
	DPL												
	PEPCO								\$ 101				
NC	DOM						\$ 242,566	\$ 573,056	\$ 90,499	\$ 20,658			
NJ	AECO												
	JCPL						\$ 39,398	\$ 205,242					
	PSEG				\$ 44,772	\$ 63,222	\$ 109,004	\$ 357,397	\$ 77,352	\$ 89,645	\$ 7,952		
OH	AEP						\$ 158	\$ (109)					
	ATSI												
PA	APS						\$ 23,903	\$ 7,789					
	ATSI												
	DUQ												
	METED	\$ 133					\$ 25,542	\$ 71,784	\$ 44,528	\$ 1,576			
	PECO				\$ 548	\$ 478	\$ 13,391	\$ 145,840	\$ 43,852	\$ 30,533	\$ 7,813	\$ 6,360	
	PENELEC				\$ 42,989	\$ 24,903	\$ 62,435	\$ 91,883	\$ 22,731	\$ 26,841	\$ 7,831		
	PPL						\$ 5,282	\$ 20,715	\$ 8,532	\$ (56)		\$ (1,515)	
VA	AEP												
	DOM				\$ 91,386	\$ 204,478	\$ 214,367	\$ 278,428	\$ 41,636	\$ 61,426	\$ 28,004		\$ 35,700
WV	AEP						\$ 1,309	\$ 813	\$ (6)				
	APS					\$ 1,643						\$ 8,255	\$ 6,029
Total		\$ 133	\$ -	\$ -	\$ 179,695	\$ 294,724	\$ 768,860	\$ 1,848,001	\$ 353,609	\$ 240,833	\$ 51,600	\$ 11,400	\$ 41,729

Day Ahead CSP Credits: \$3,790,583



2012 Economic Demand Side Response Monthly Net CSP Credits Real-Time Activity

State	Zone	JAN	FEB	MAR	APR	MAY	JUN	JUL	AUG	SEP	OCT	NOV	DEC
DE	DPL							\$ 439	\$ 1,122	\$ 417	\$ 330		
IL	COMED				\$ 334	\$ 4,818	\$ 32,773	\$ 134,226	\$ 79,427	\$ 41,583	\$ 1,641	\$ 22,689	\$ 4,710
MD	BGE						\$ 147	\$ 150,792	\$ 16,046				
	DPL						\$ 8,349	\$ 20,118					
	PEPCO						\$ 27,127	\$ 74,033	\$ 17,528				
NC	DOM												
NJ	AECO							\$ 20,555					
	JCPL												
	PSEG				\$ 485	\$ 4,011	\$ 6,334	\$ 34,448	\$ 183,553	\$ 55,349	\$ 114,575	\$ 8,339	
OH	AEP						\$ 1						
	ATSI						\$ 2,173	\$ 5,218					
PA	APS						\$ 165,376	\$ 444,256	\$ 154,468	\$ 22,680	\$ 65,528		
	ATSI						\$ 340	\$ 966	\$ 260	\$ 76			
	DUQ						\$ 2,793	\$ 151	\$ 88				
	METED						\$ 10,463	\$ 15,938	\$ 28,818	\$ 4,627	\$ 787	\$ 664	\$ 12
	PECO	\$ 395		\$ 17	\$ 32	\$ 927	\$ 76,110	\$ 165,171	\$ 91,944	\$ 20,694	\$ 10,741	\$ 3,075	\$ 1,876
	PENELEC				\$ (33)	\$ 24,704	\$ 11,509	\$ 42,632	\$ 51,776	\$ 18,516	\$ 56,701	\$ 3,848	
	PPL					\$ 127	\$ 60,021	\$ 271,342	\$ 74,541	\$ 1,436	\$ 559	\$ 461	\$ 13
VA	AEP												
	DOM	\$ 8,137	\$ 14,994	\$ 6,732	\$ 14,884	\$ 155,446	\$ 277,727	\$ 489,636	\$ 428,934	\$ 288,574	\$ 267,103	\$ 293,400	\$ 87,344
WV	AEP							\$ 11,107					
	APS						\$ 4,937	\$ 41,998	\$ 56,430	\$ 9,928	\$ 40,280	\$ 14,829	
Total		\$ 8,532	\$ 14,994	\$ 6,749	\$ 15,702	\$ 190,032	\$ 686,181	\$ 1,923,026	\$ 1,184,936	\$ 463,879	\$ 558,244	\$ 347,306	\$ 93,955

Real Time CSP Credits: \$5,493,535



2012 RPM (ILR & DR) Demand Side Response Monthly Capacity Revenue

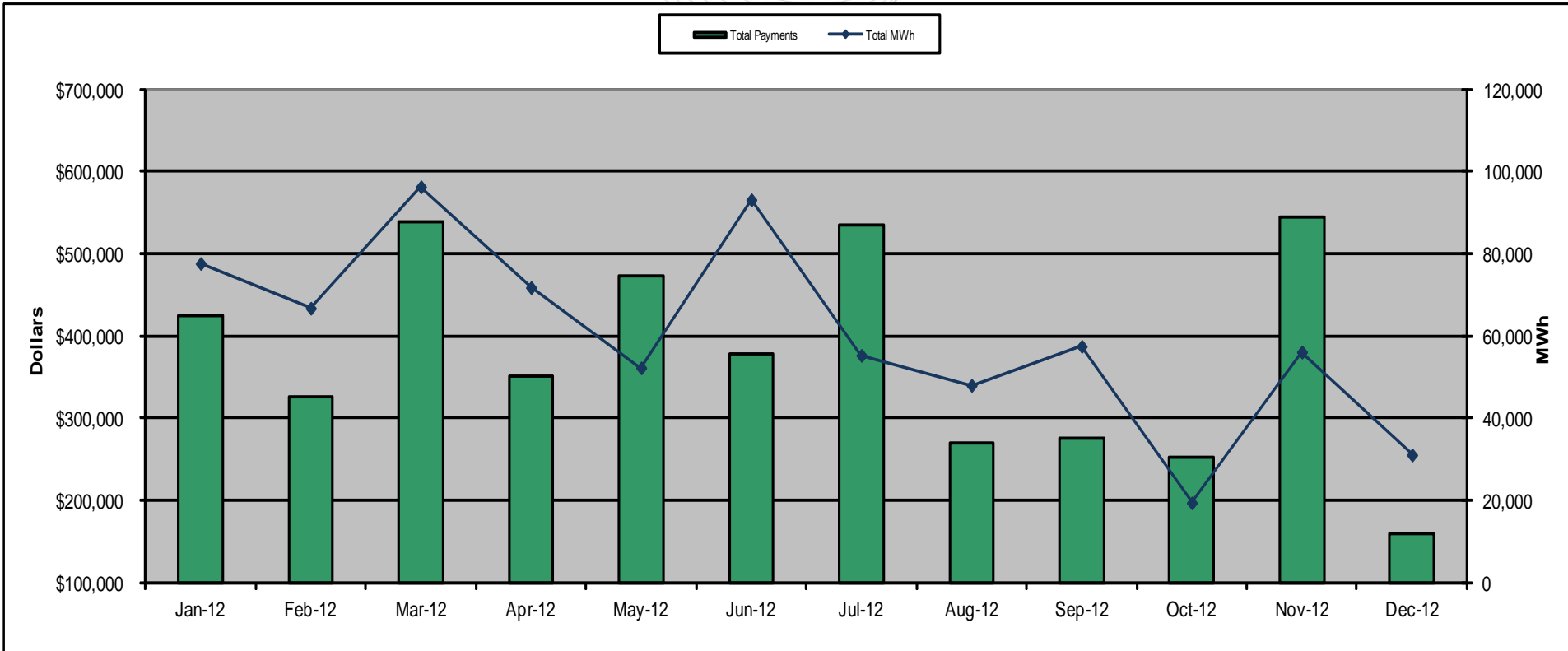
Zone	JAN	FEB	MAR	APR	MAY	JUN	JUL	AUG	SEP	OCT	NOV	DEC
AECO	\$343,831	\$321,649	\$343,831	\$332,740	\$343,831	\$397,836	\$411,097	\$411,097	\$397,836	\$411,097	\$397,836	\$411,097
AEP	\$5,390,887	\$5,043,088	\$5,390,887	\$5,216,988	\$5,390,887	\$411,388	\$425,101	\$425,101	\$411,388	\$425,101	\$411,388	\$425,101
APS	\$3,410,799	\$3,190,748	\$3,410,799	\$3,300,774	\$3,410,799	\$179,495	\$185,478	\$185,478	\$179,495	\$185,478	\$179,495	\$185,478
ATSI	\$4,821	\$4,510	\$4,821	\$4,665	\$4,821	\$19,218	\$19,859	\$19,859	\$19,218	\$19,859	\$19,218	\$19,859
BGE	\$3,630,571	\$3,396,340	\$3,630,571	\$3,513,455	\$3,630,571	\$5,254,943	\$5,430,108	\$5,430,108	\$5,254,943	\$5,430,108	\$5,254,943	\$5,430,108
COMED	\$6,180,266	\$5,781,539	\$6,180,266	\$5,980,903	\$6,180,266	\$392,831	\$405,926	\$405,926	\$392,831	\$405,926	\$392,831	\$405,926
DAY	\$824,485	\$771,293	\$824,485	\$797,889	\$824,485	\$61,616	\$63,670	\$63,670	\$61,616	\$63,670	\$61,616	\$63,670
DECK						\$7,921	\$8,185	\$8,185	\$7,921	\$8,185	\$7,921	\$8,185
DOM	\$3,977,804	\$3,721,172	\$3,977,804	\$3,849,488	\$3,977,804	\$297,028	\$306,929	\$306,929	\$297,028	\$306,929	\$297,028	\$306,929
DPL	\$817,336	\$764,605	\$817,336	\$790,970	\$817,336	\$1,497,145	\$1,547,049	\$1,547,049	\$1,497,145	\$1,547,049	\$1,497,145	\$1,547,049
DUQ	\$2,418	\$2,262	\$2,418	\$2,340	\$2,418	\$48,114	\$49,718	\$49,718	\$48,114	\$49,718	\$48,114	\$49,718
JCPL	\$883,220	\$826,238	\$883,220	\$854,729	\$883,220	\$1,447,382	\$1,495,628	\$1,495,628	\$1,447,382	\$1,495,628	\$1,447,382	\$1,495,628
METED	\$909,516	\$850,837	\$909,516	\$880,176	\$909,516	\$1,010,595	\$1,044,281	\$1,044,281	\$1,010,595	\$1,044,281	\$1,010,595	\$1,044,281
PECO	\$2,375,286	\$2,222,042	\$2,375,286	\$2,298,664	\$2,375,286	\$2,574,260	\$2,660,069	\$2,660,069	\$2,574,260	\$2,660,069	\$2,574,260	\$2,660,069
PENELEC	\$1,380,240	\$1,291,192	\$1,380,240	\$1,335,716	\$1,380,240	\$1,107,926	\$1,144,857	\$1,144,857	\$1,107,926	\$1,144,857	\$1,107,926	\$1,144,857
PEPCO	\$1,174,938	\$1,099,136	\$1,174,938	\$1,137,037	\$1,174,938	\$1,845,088	\$1,906,591	\$1,906,591	\$1,845,088	\$1,906,591	\$1,845,088	\$1,906,591
PPL	\$2,739,610	\$2,562,861	\$2,739,610	\$2,651,235	\$2,739,610	\$3,142,521	\$3,247,272	\$3,247,272	\$3,142,521	\$3,247,272	\$3,142,521	\$3,247,272
PSEG	\$1,468,327	\$1,373,596	\$1,468,327	\$1,420,962	\$1,468,327	\$2,278,452	\$2,354,400	\$2,354,400	\$2,278,452	\$2,354,400	\$2,278,452	\$2,354,400
RECO	\$22,526	\$21,072	\$22,526	\$21,799	\$22,526	\$14,415	\$14,896	\$14,896	\$14,415	\$14,896	\$14,415	\$14,896
Total	\$35,536,881	\$33,244,179	\$35,536,881	\$34,390,530	\$35,536,881	\$21,988,172	\$22,721,111	\$22,721,111	\$21,988,172	\$22,721,111	\$21,988,172	\$22,721,111

Total Capacity Credits: \$331,094,315

Note:

1) Values represent RPM revenue, not revenue associated with FRR plans.

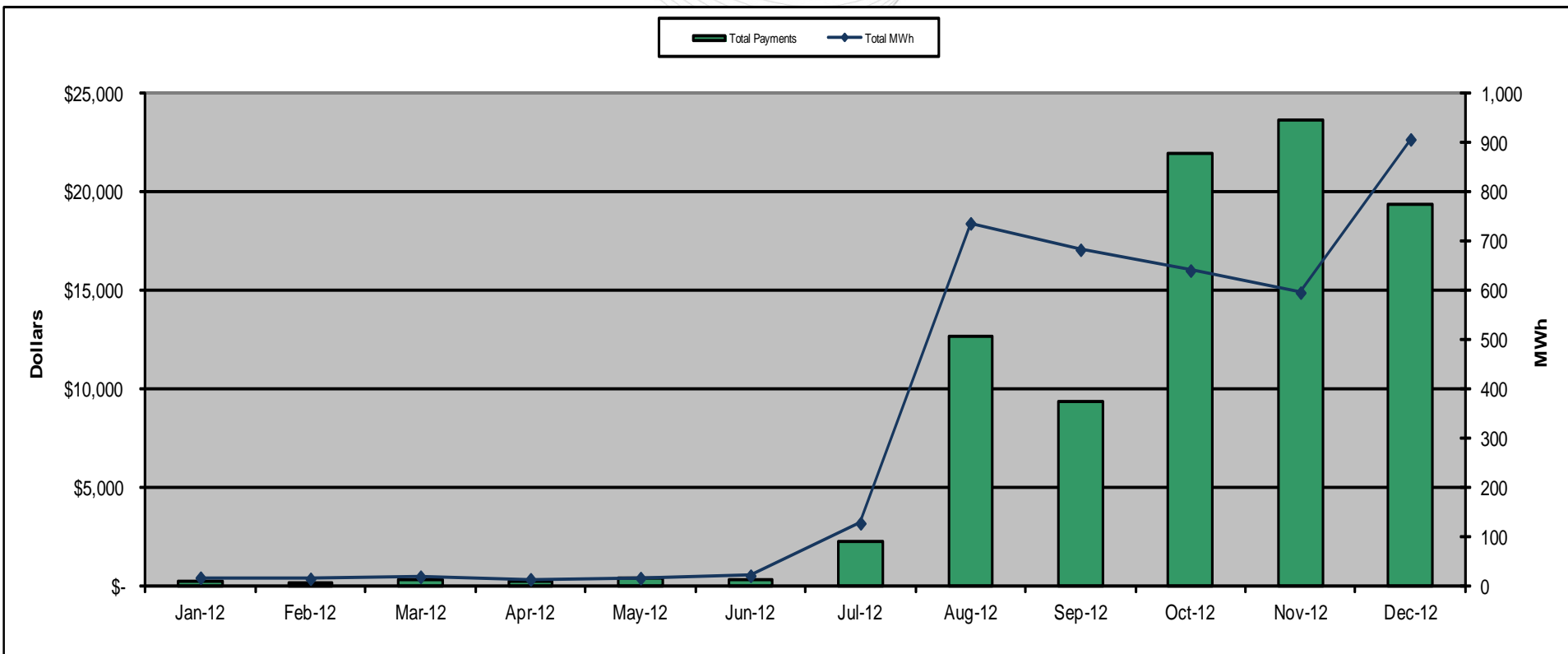
2012 Demand Side Response Synchronized Reserve Participation



	Jan-12	Feb-12	Mar-12	Apr-12	May-12	Jun-12	Jul-12	Aug-12	Sep-12	Oct-12	Nov-12	Dec-12	Total
Total MWh	77,619	66,736	96,276	71,751	52,220	93,121	55,266	47,966	57,462	19,383	56,070	31,027	724,897
Total Payments	\$423,818	\$325,929	\$538,356	\$350,053	\$472,576	\$377,927	\$533,992	\$270,179	\$274,462	\$251,324	\$543,641	\$159,138	\$4,521,396
\$ / MWh	\$5.46	\$4.88	\$5.59	\$4.88	\$9.05	\$4.06	\$9.66	\$5.63	\$4.78	\$12.97	\$9.70	\$5.13	\$6.24

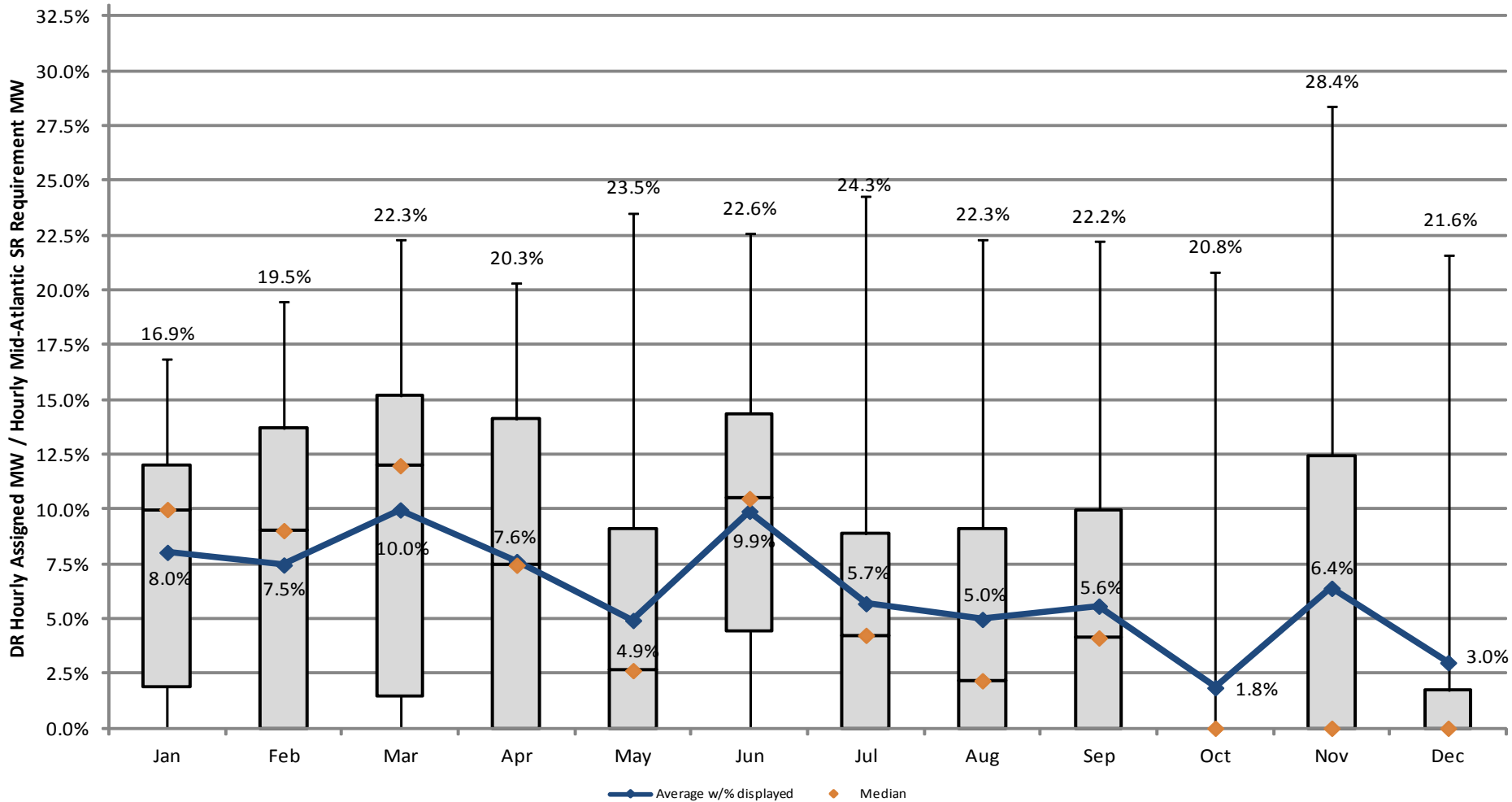
MWh = sum of the settled MW
(Example: 1 MW load available for 12 hours = 12 MWh)

2012 Demand Side Response Regulation Participation



	Jan-12	Feb-12	Mar-12	Apr-12	May-12	Jun-12	Jul-12	Aug-12	Sep-12	Oct-12	Nov-12	Dec-12	Total
Total MWh	15.8	13.6	17.9	12.6	15.0	19.9	126	735	681	639	594	905	3,774
Total Payments	\$190.61	\$156.34	\$246.50	\$187.22	\$322.67	\$283.86	\$2,256	\$12,602	\$9,274	\$21,868	\$23,587	\$19,316	\$90,292
\$ / MWh	\$12.05	\$11.53	\$13.79	\$14.89	\$21.52	\$14.29	\$17.86	\$17.15	\$13.62	\$34.23	\$39.70	\$21.35	\$23.92

MWh = sum of the settled MW
(Example: 1 MW load available for 12 hours = 12 MWh)



Note:
 1) Demand Response are Tier 2 resources.
 2) Percents shown on upper whisker are maximum hourly DR percentage of Total Mid-Atlantic SR requirement (Jan-Sep) and MAD SR Requirement (Oct forward).