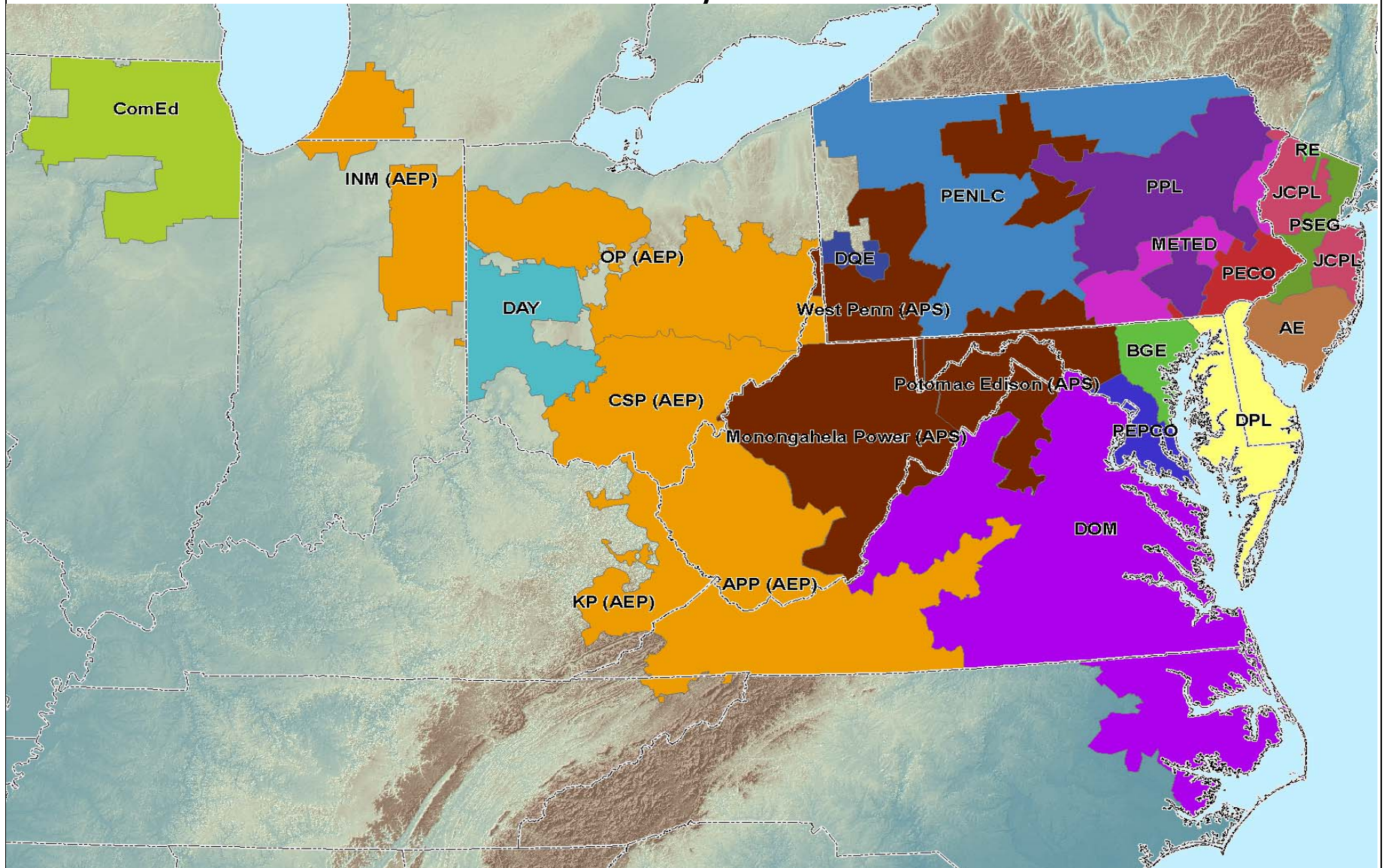


PJM Load Forecast Report January 2007



Prepared by PJM Capacity Adequacy Planning Department

TABLE OF CONTENTS

	TABLE NUMBER	CHART PAGE	TABLE PAGE
EXECUTIVE SUMMARY			1
FORECAST COMPARISON:			
Summer Geographic Zone and PJM RTO – Comparison to Prior Peak Forecasts	A-1		23
Winter Geographic Zone and PJM RTO – Comparison to Prior Peak Forecasts	A-2		25
PEAK LOAD FORECAST AND ANNUAL GROWTH RATES:			
Seasonal Unrestricted PJM Peak Forecast			27
Summer Peak Forecasts and Growth Rates of each Geographic Zone and Total PJM	B-1	2, 4-22	29
Winter Peak Forecasts and Growth Rates of each Geographic Zone and Total PJM	B-2	3, 4-22	33
Spring Peak Forecasts of each Geographic Zone and Total PJM	B-3		37
Fall Peak Forecasts of each Geographic Zone and Total PJM	B-4		39
Monthly Peak Forecasts of each Geographic Zone and PJM Totals	B-5		41
Monthly Peak Forecasts of FE/GPU and PLGrp	B-6		43
Active Load Management in Planning Placed Under PJM Coordination by Geographic Zone	B-7		44
Summer Coincident Peak Load Forecasts of each Geographic Zone, Load Deliverability Area and Total PJM (RPM Forecast)	B-8		46
LOAD DELIVERABILITY AREA SEASONAL PEAKS:			
Central Mid-Atlantic: BGE, MetEd, PEPCO, PL and UGI Seasonal Peaks	C-1		47

	TABLE NUMBER	CHART PAGE	TABLE PAGE
Western Mid-Atlantic: MetEd, PENLC, PL and UGI Seasonal Peaks	C-2		48
Eastern Mid-Atlantic: AE, DPL, JCPL, PECO, PS and RECO Seasonal Peaks	C-3		49
Southern Mid-Atlantic: BGE and PEPCO Seasonal Peaks	C-4		50
Mid-Atlantic and APS: AE, APS, BGE, DPL, JCPL, MetEd, PECO, PNLC, PEPCO, PS, RECO and UGI Seasonal Peaks	C-5		51
EXTREME WEATHER (90/10) PEAK LOAD FORECASTS:			
Summer 90/10 Peak Forecasts of each Geographic Zone and Total PJM	D-1		52
Winter 90/10 Peak Forecasts of each Geographic Zone and Total PJM	D-2		54
PJM HISTORICAL DATA:			
Historical RTO Summer and Winter Peaks	E-1		56
Historical RTO Net Energy	E-2		57

TERMS AND ABBREVIATIONS USED IN THIS REPORT

AE	Atlantic Electric zone (part of Pepco Holdings, Inc)
AEP	American Electric Power zone (incorporated 10/1/2004)
APP	Appalachian Power, sub-zone of AEP
APS	Allegheny Power zone (incorporated 4/1/2002)
Base Load	Average peak load on non-holiday weekdays with no heating or cooling load. Base load is insensitive to weather.
BGE	Baltimore Gas & Electric zone
COMED	Commonwealth Edison zone (incorporated 5/1/2004)
Contractually Interruptible	Load Management from customers responding to direction from a control center
Cooling Load	The weather-sensitive portion of summer peak load
CSP	Columbus Southern Power, sub-zone of AEP
Direct Control	Load Management achieved directly by a signal from a control center
DAY	Dayton Power & Light zone (incorporated 10/1/2004)
DLCO	Duquesne Lighting Company zone (incorporated 1/1/2005)
DPL	Delmarva Power & Light zone (part of Pepco Holdings, Inc)
FE/GPU	The combination of First Energy's Jersey Central Power & Light, Metropolitan Edison, and Pennsylvania Electric zones (formerly GPU)
Heating Load	The weather-sensitive portion of winter peak load
INM	Indiana Michigan Power, sub-zone of AEP
JCPL	Jersey Central Power & Light zone
KP	Kentucky Power, sub-zone of AEP
METED	Metropolitan Edison zone
MP	Monongahela Power, sub-zone of APS
OP	Ohio Power, sub-zone of AEP
PECO	PECO Energy zone

PED	Potomac Edison, sub-zone of APS
PEPCO	Potomac Electric Power zone (part of Pepco Holdings, Inc)
PL	PPL Electric Utilities, sub-zone of PLGroup
PLGroup/PLGRP	Pennsylvania Power & Light zone
PENLC	Pennsylvania Electric zone
PS	Public Service Electric & Gas zone
RECO	Rockland Electric (East) zone (incorporated 3/1/2002)
UGI	UGI Utilities, sub-zone of PLGroup
WP	West Penn Power, sub-zone of APS
Zone	Areas within the PJM Control Area, as defined in the PJM Reliability Assurance Agreement

2007 PJM LOAD REPORT

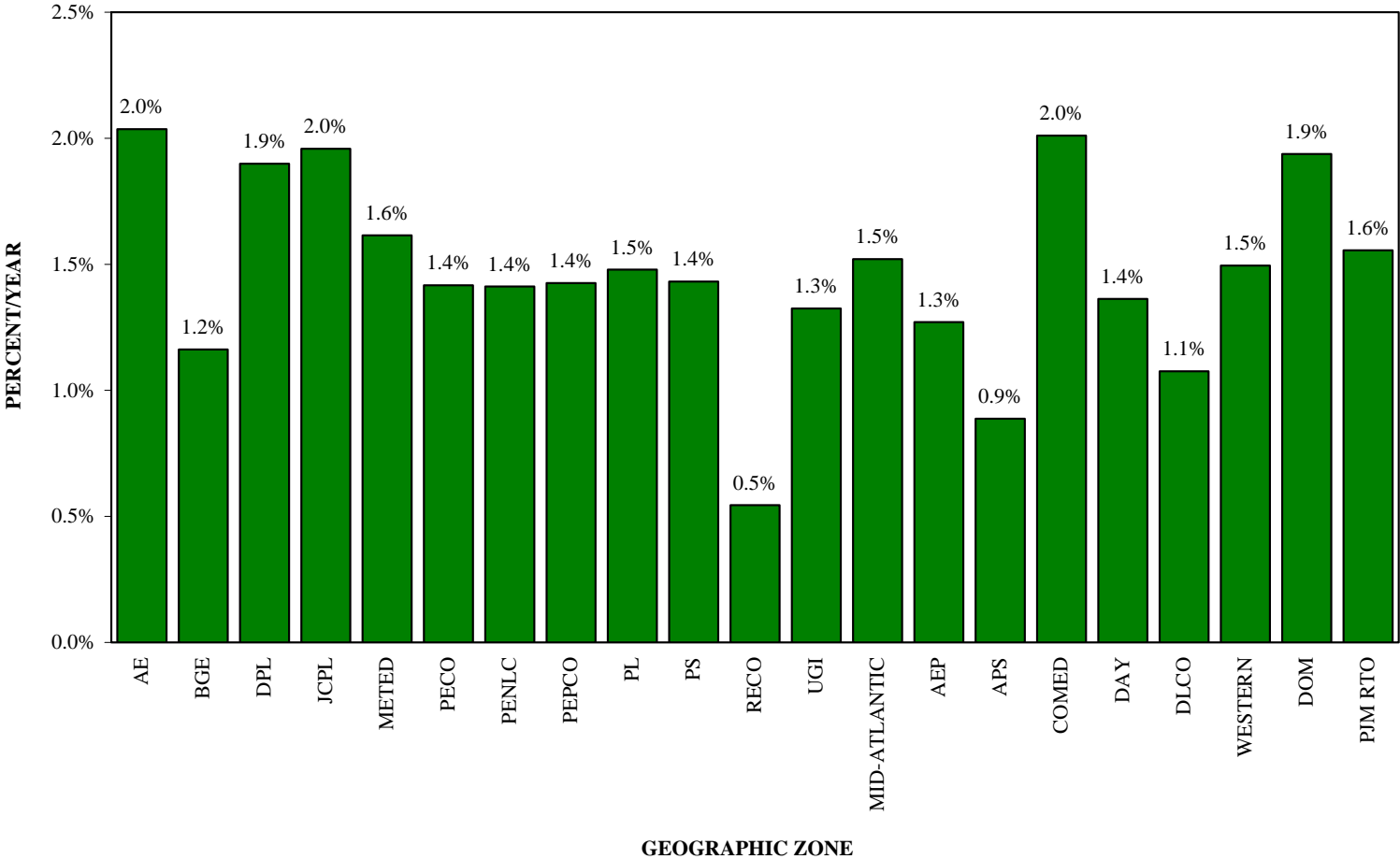
EXECUTIVE SUMMARY

1. This report presents an independent load forecast prepared by PJM staff.
2. The report includes long-term forecasts of peaks and load management for each PJM zone, region, and the total RTO. The forecast horizon has been increased from 10 years to 15 years to accommodate the expanded Regional Transmission Expansion Plan process.
3. Several new tables appear in this year's report: 1) Table B-8 presents coincident peaks for each PJM zone, Load Deliverability Area, and the total RTO. These forecasts reflect the load of each area at the time of the RTO peak, and will be used in the Reliability Pricing Model (RPM); 2) Table C-5 presents seasonal peak forecasts for the combined area of the Mid-Atlantic region and the APS zone; and 3) Tables D-1 and D-2 present extreme weather (90/10) forecasts for each PJM zone, region, and the total RTO, for summer and winter, respectively.
4. The PJM RTO weather normalized summer peak for 2006 was 136,200 MW. The projection for the 2007 PJM RTO summer peak is 136,961 MW, an increase of 761 MW, or 0.6%, from the 2006 normalized peak.
5. Summer peak load growth for PJM RTO is projected to average 1.6% per year over the next 10 years, and 1.5% over the next 15 years. The PJM RTO summer peak reaches 159,822 MW in 2017, a 10-year increase of 22,861 MW, and reaches 171,295 MW in 2022, a 15-year increase of 34,334 MW. Annualized growth rates for individual zones range from 0.5% to 2.0%.
6. Winter peak load growth for PJM RTO is projected to average 1.1% per year over the next 10- and 15-year periods. The PJM RTO winter peak load in 2015/16 is forecast to be 126,135 MW, a 10-year increase of 13,177 MW, and reaches 132,686 MW in 2021/22, a 15-year increase of 19,728 MW. Annualized growth rates for individual zones range from 0.5% to 1.7%.
7. Based on the forecast contained within this report, the PJM RTO will continue to be summer peaking during the next 15 years.

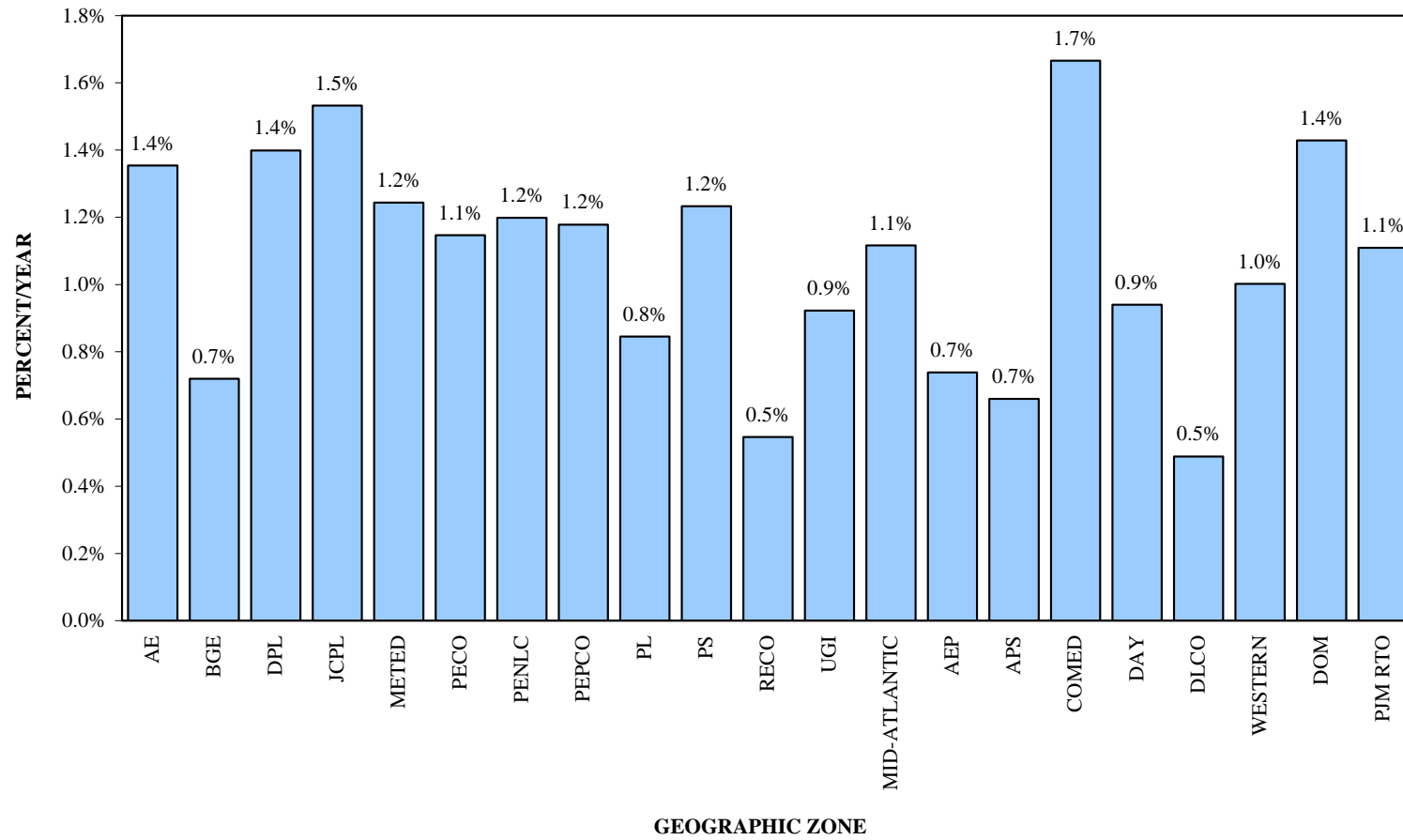
NOTE:

All compound growth rates are calculated from the first year of the forecast.

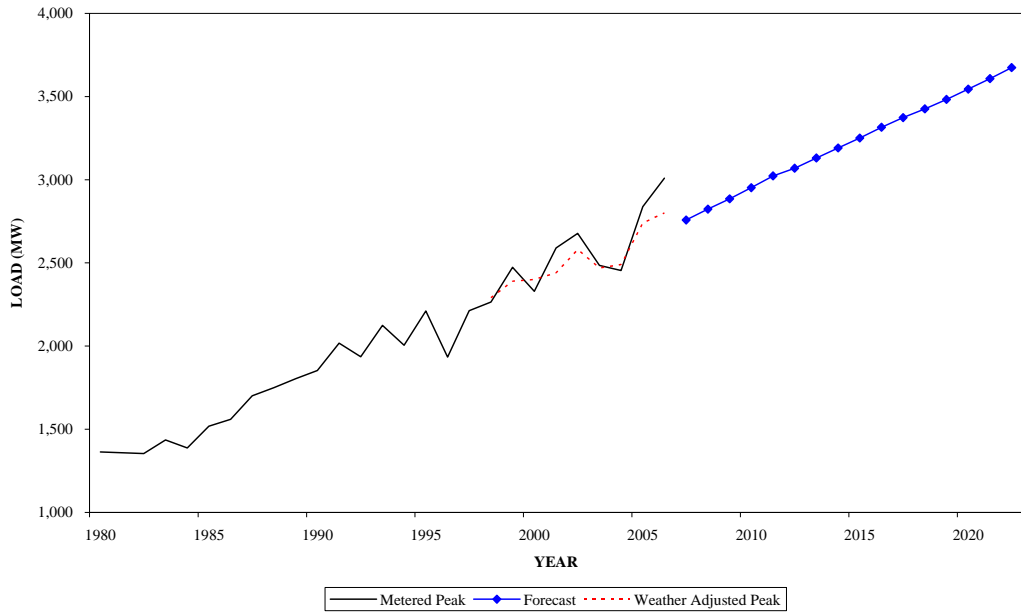
**PJM SUMMER PEAK LOAD GROWTH RATE
2007-2017**



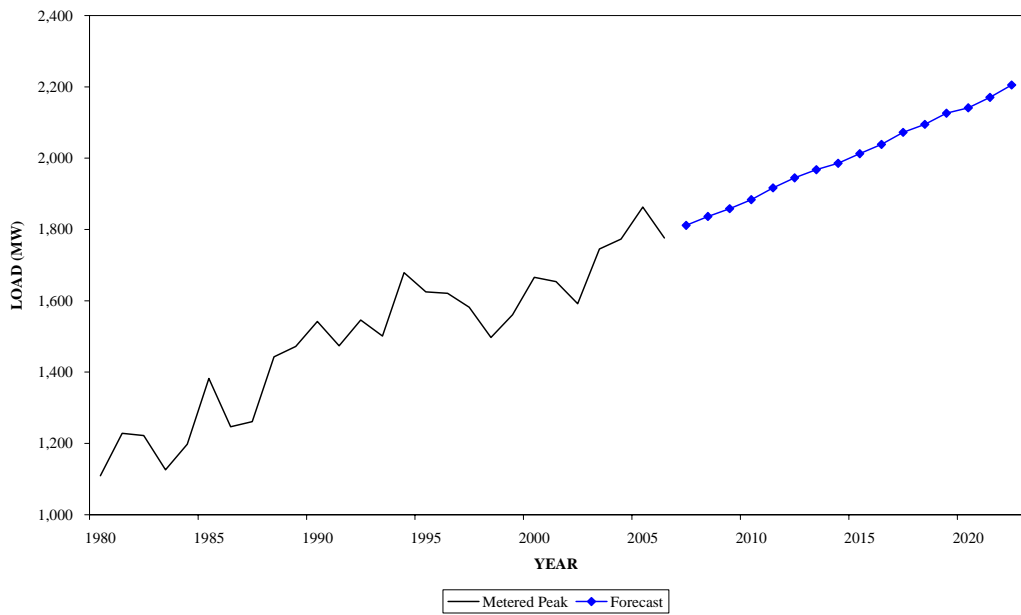
**PJM WINTER PEAK LOAD GROWTH RATE
2007-2017**



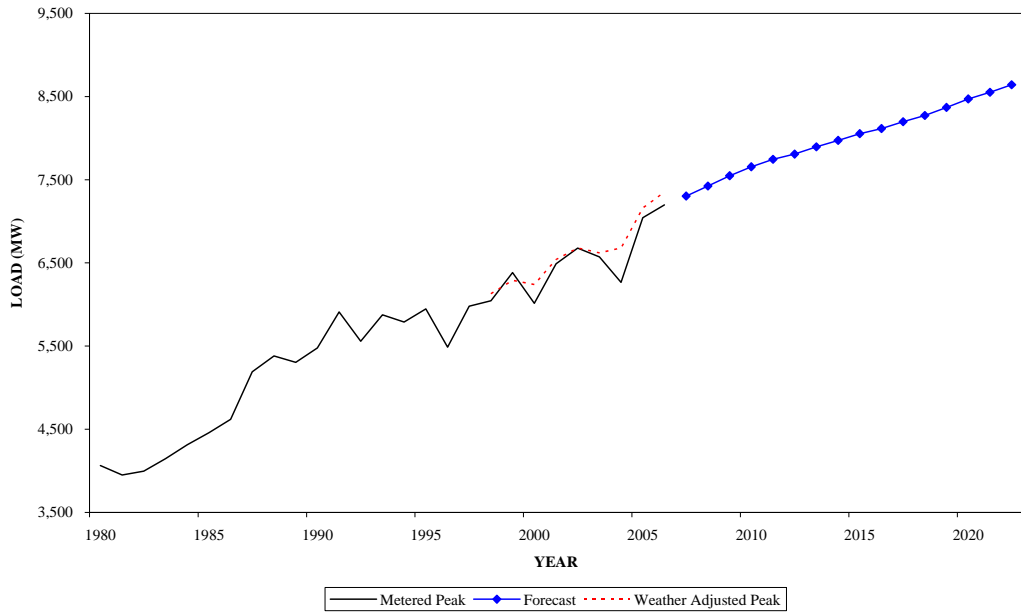
**SUMMER PEAK DEMAND FOR AE
GEOGRAPHIC ZONE**



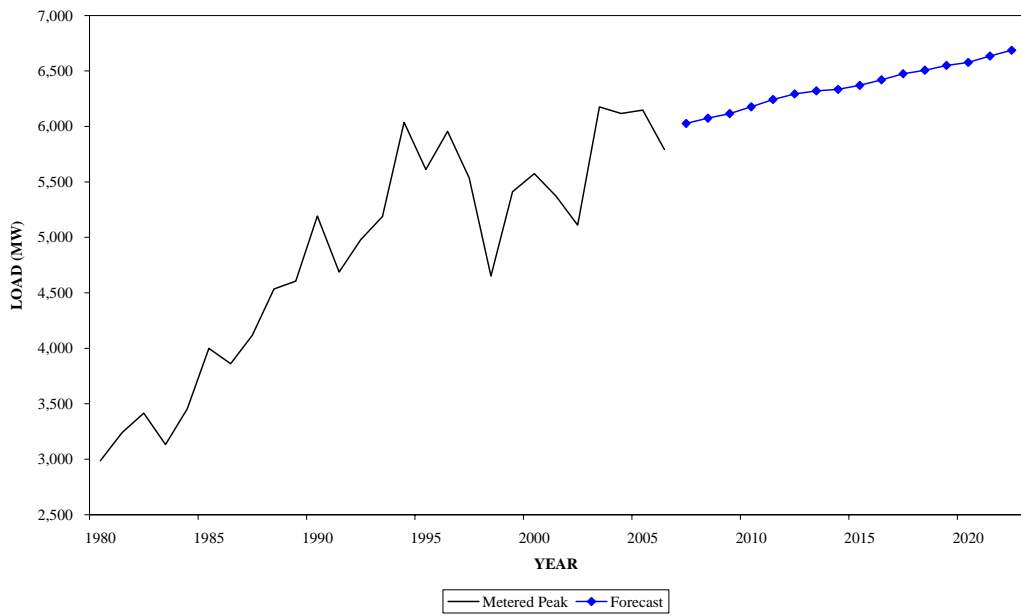
**WINTER PEAK DEMAND FOR AE
GEOGRAPHIC ZONE**



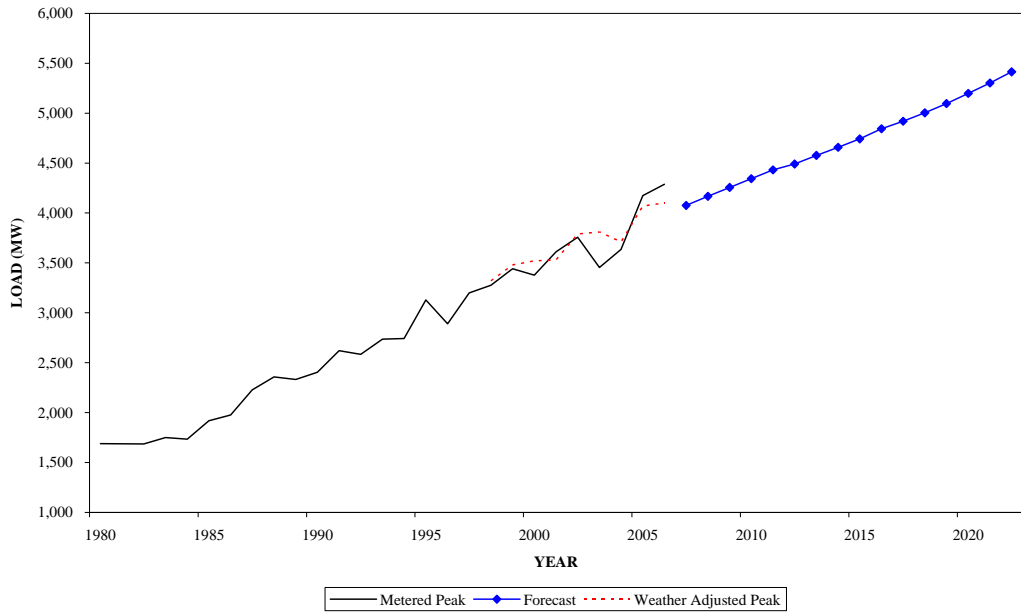
**SUMMER PEAK DEMAND FOR BGE
GEOGRAPHIC ZONE**



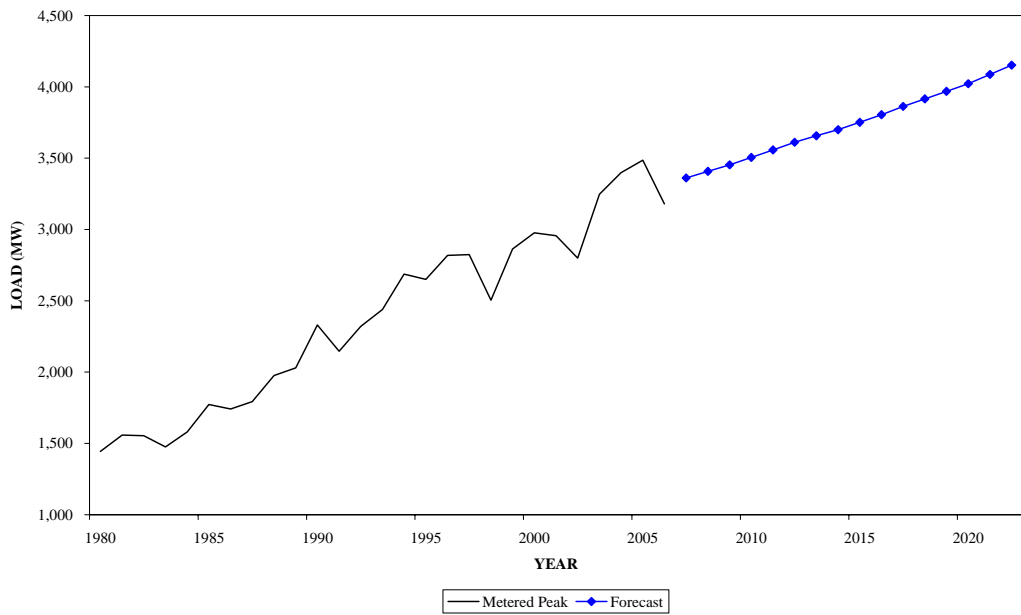
**WINTER PEAK DEMAND FOR BGE
GEOGRAPHIC ZONE**



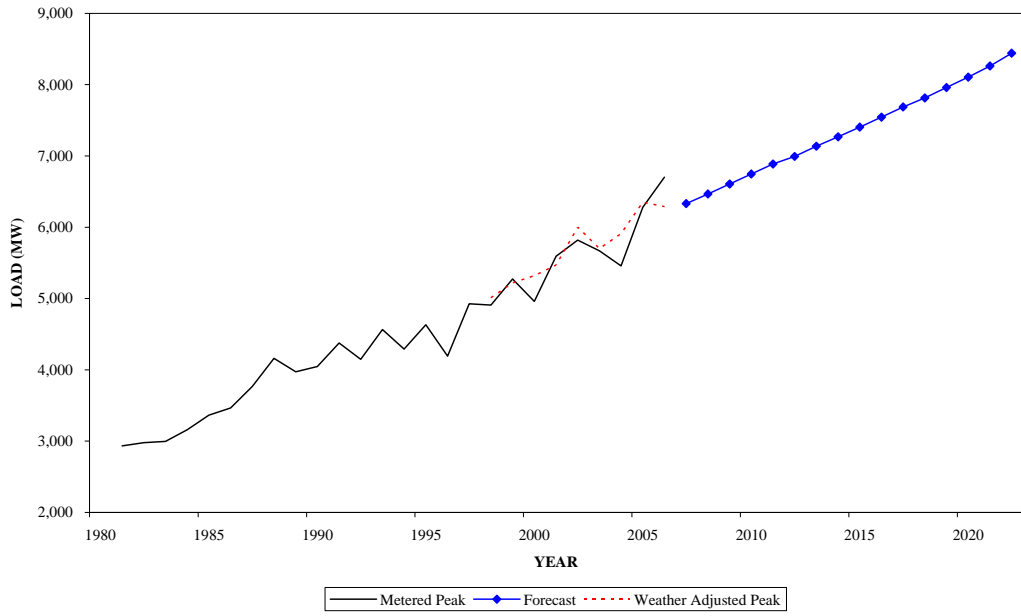
**SUMMER PEAK DEMAND FOR DPL
GEOGRAPHIC ZONE**



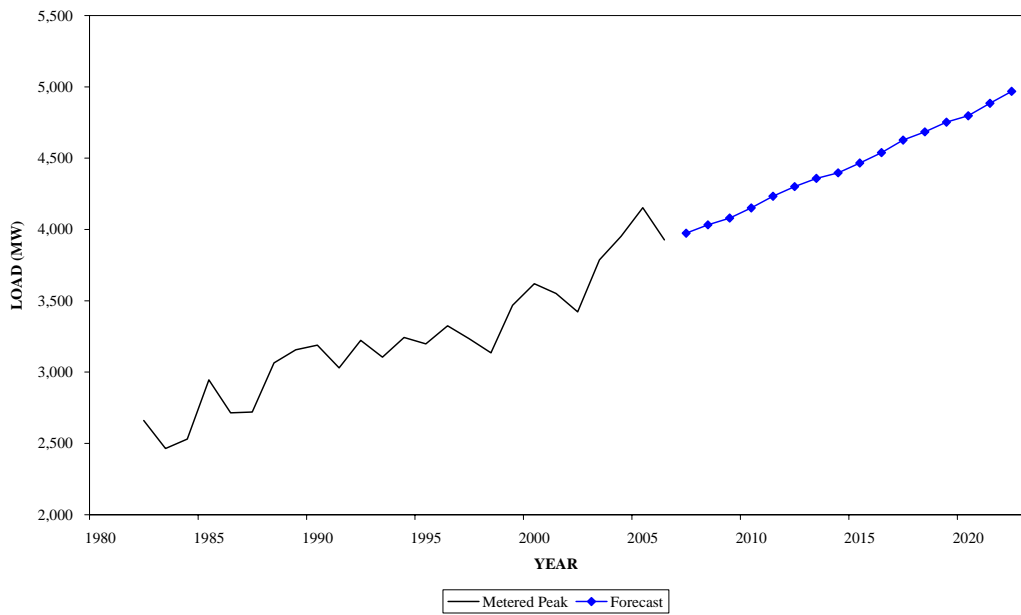
**WINTER PEAK DEMAND FOR DPL
GEOGRAPHIC ZONE**



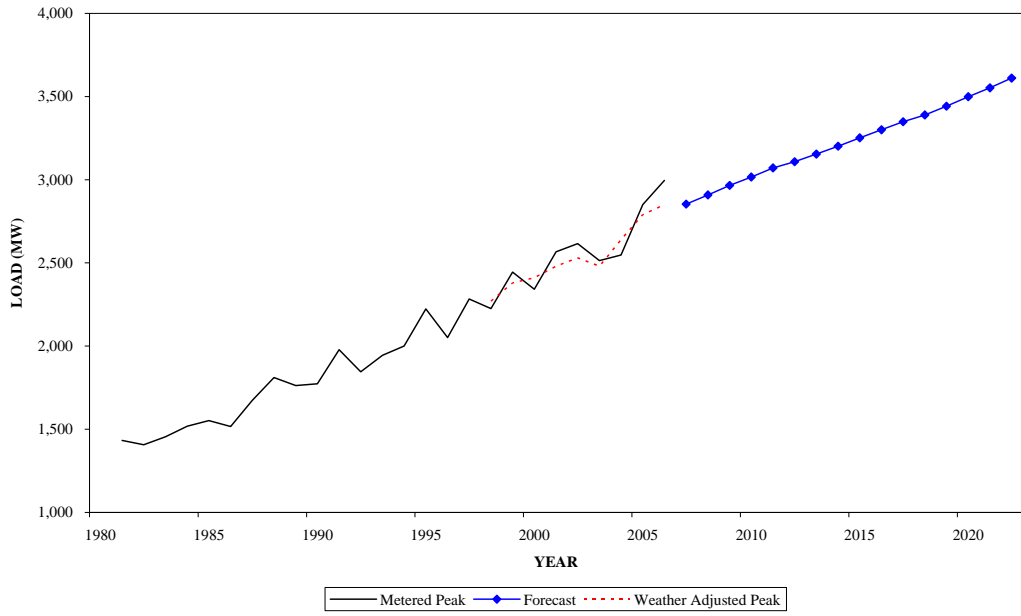
**SUMMER PEAK DEMAND FOR JCPL
GEOGRAPHIC ZONE**



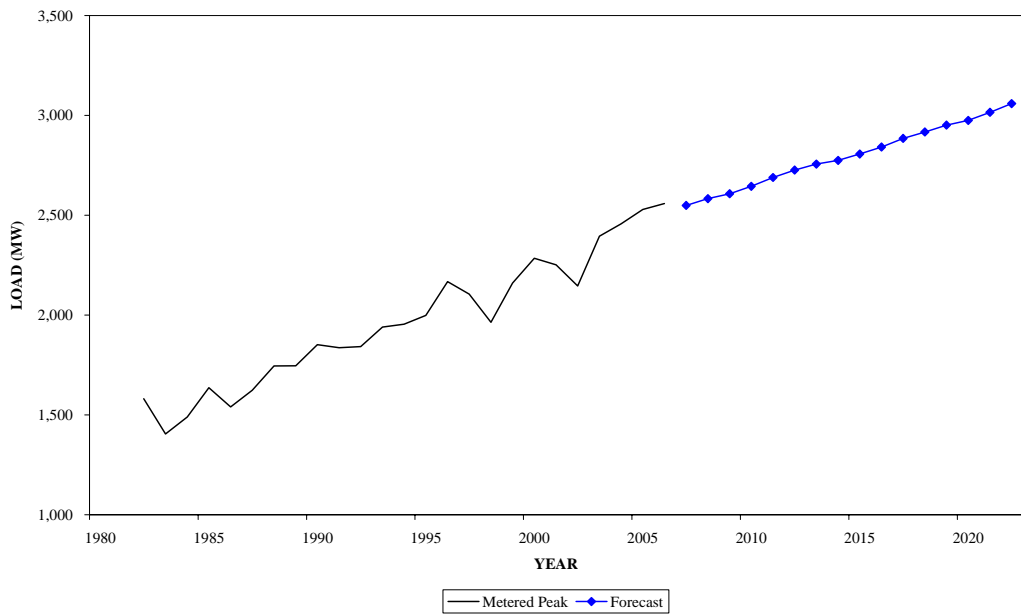
**WINTER PEAK DEMAND FOR JCPL
GEOGRAPHIC ZONE**



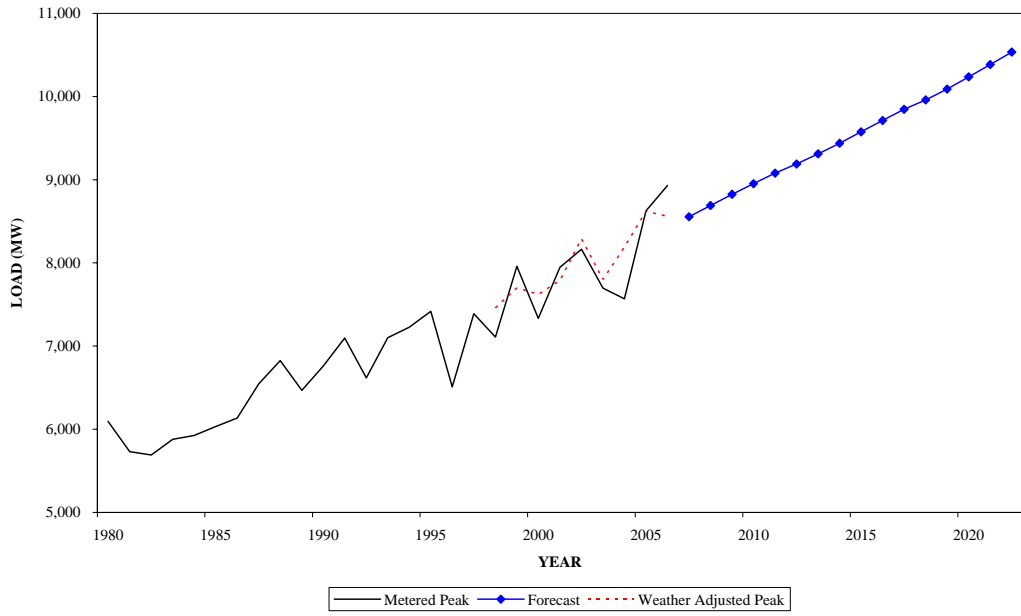
**SUMMER PEAK DEMAND FOR METED
GEOGRAPHIC ZONE**



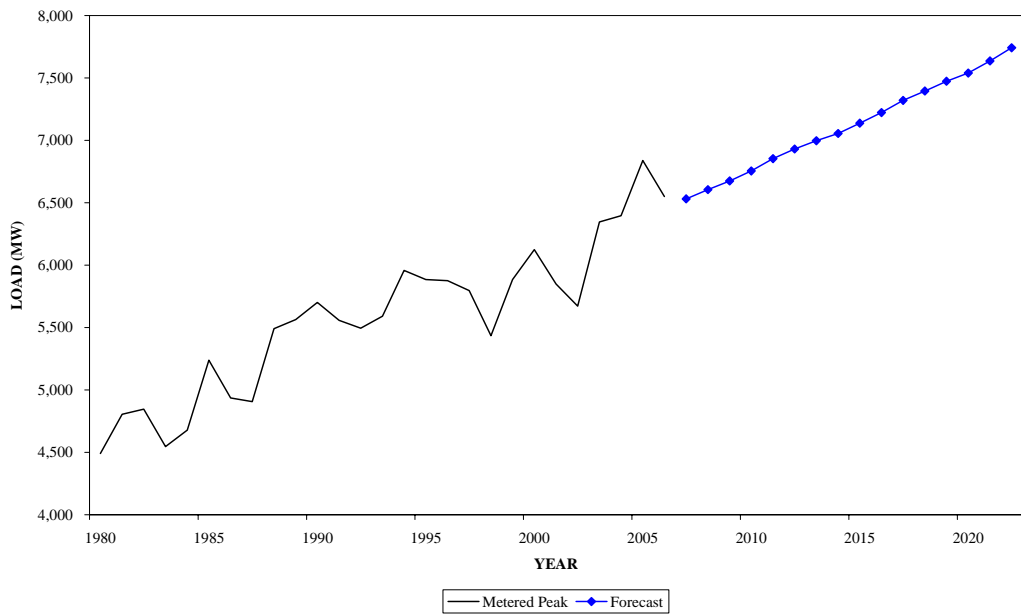
**WINTER PEAK DEMAND FOR METED
GEOGRAPHIC ZONE**



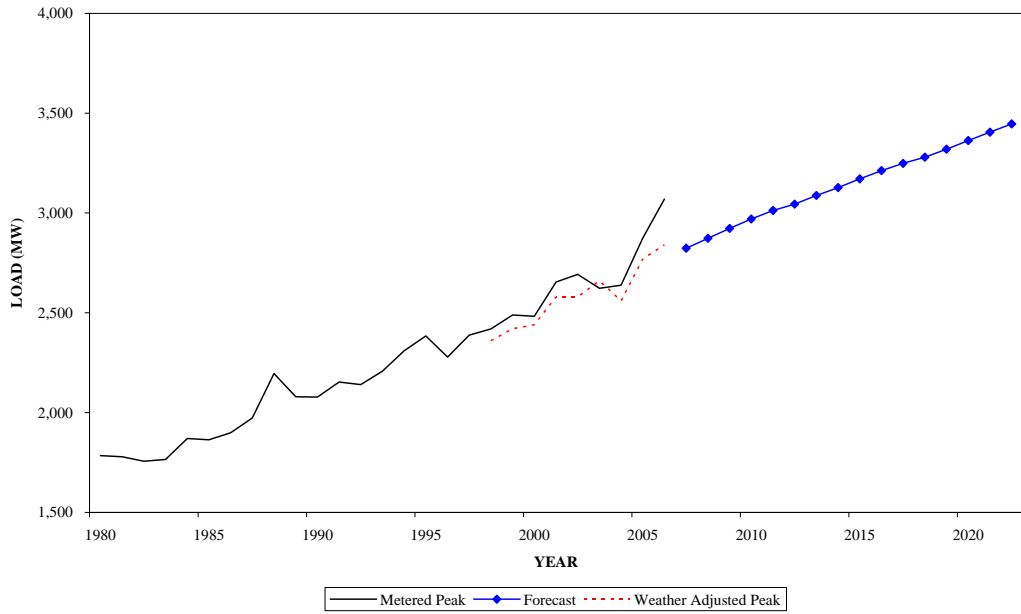
**SUMMER PEAK DEMAND FOR PECO
GEOGRAPHIC ZONE**



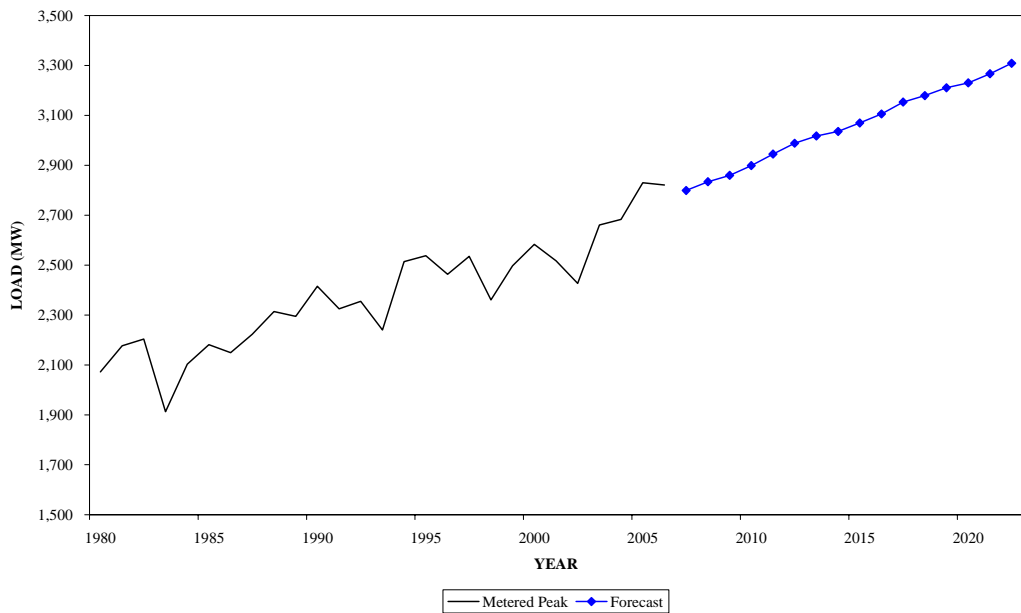
**WINTER PEAK DEMAND FOR PECO
GEOGRAPHIC ZONE**



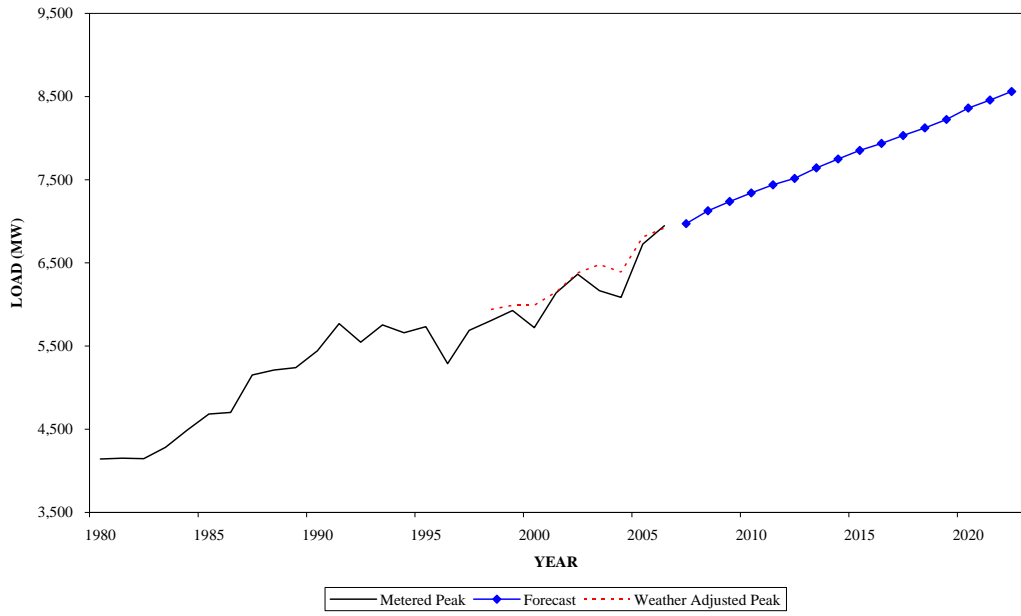
**SUMMER PEAK DEMAND FOR PENLC
GEOGRAPHIC ZONE**



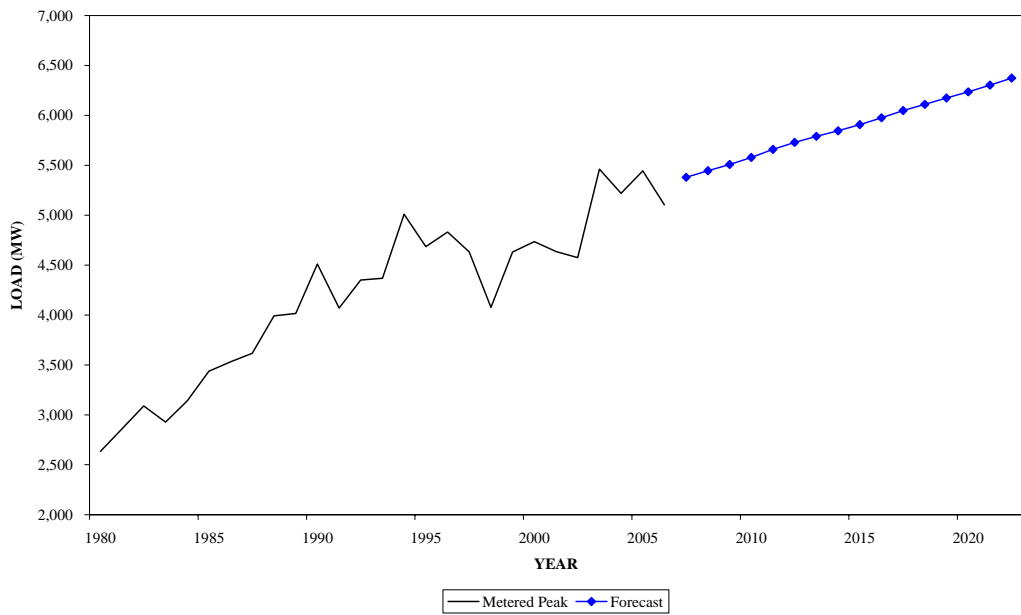
**WINTER PEAK DEMAND FOR PENLC
GEOGRAPHIC ZONE**



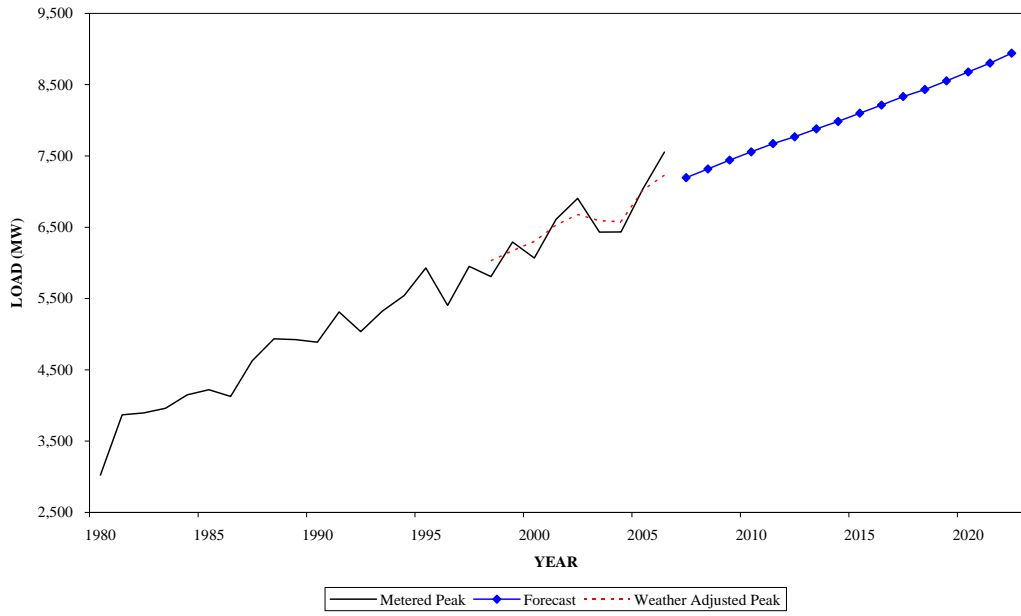
**SUMMER PEAK DEMAND FOR PEPCO
GEOGRAPHIC ZONE**



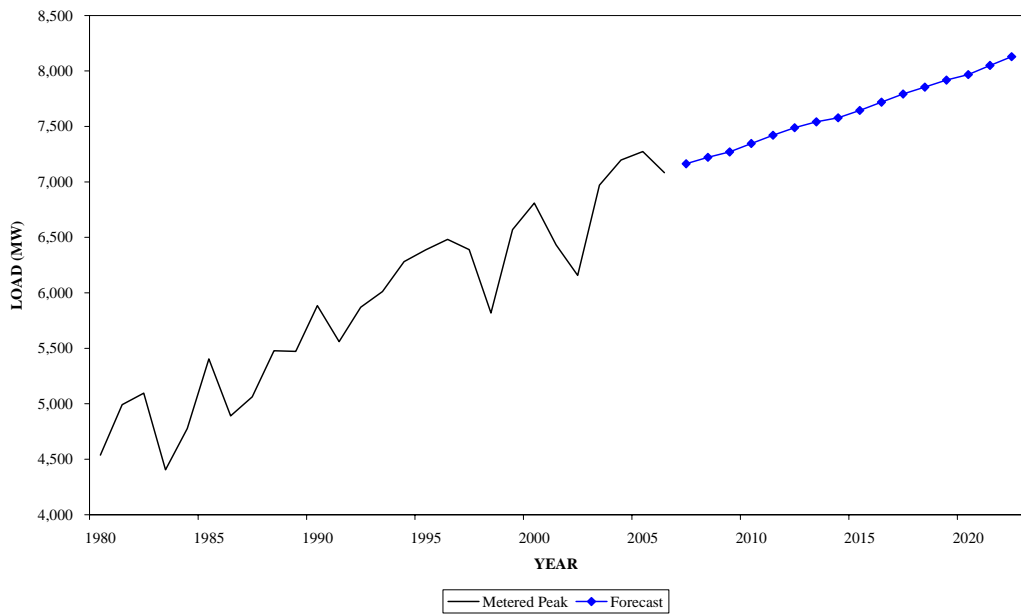
**WINTER PEAK DEMAND FOR PEPCO
GEOGRAPHIC ZONE**



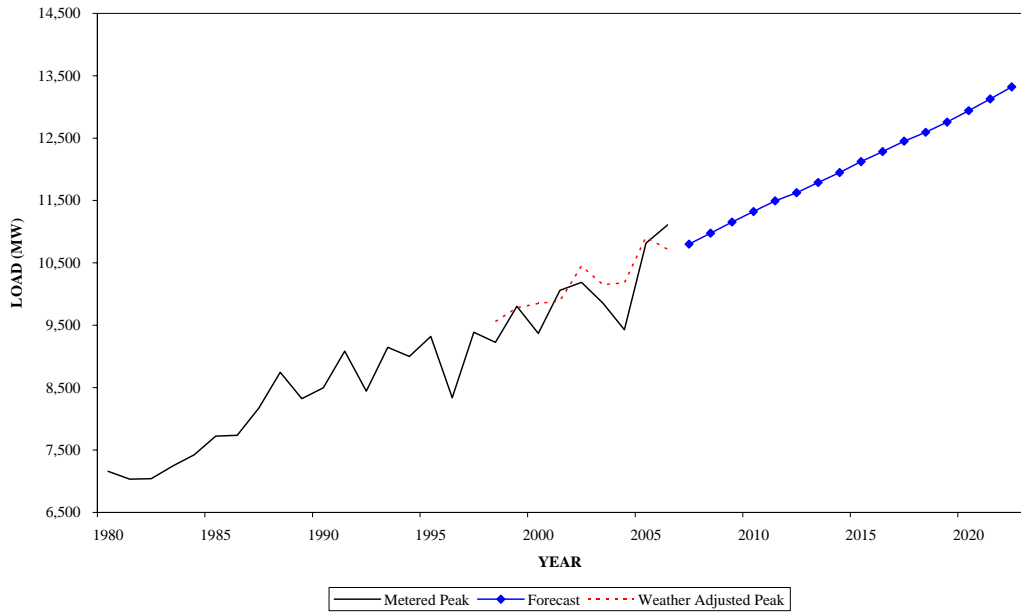
**SUMMER PEAK DEMAND FOR PL
GEOGRAPHIC ZONE**



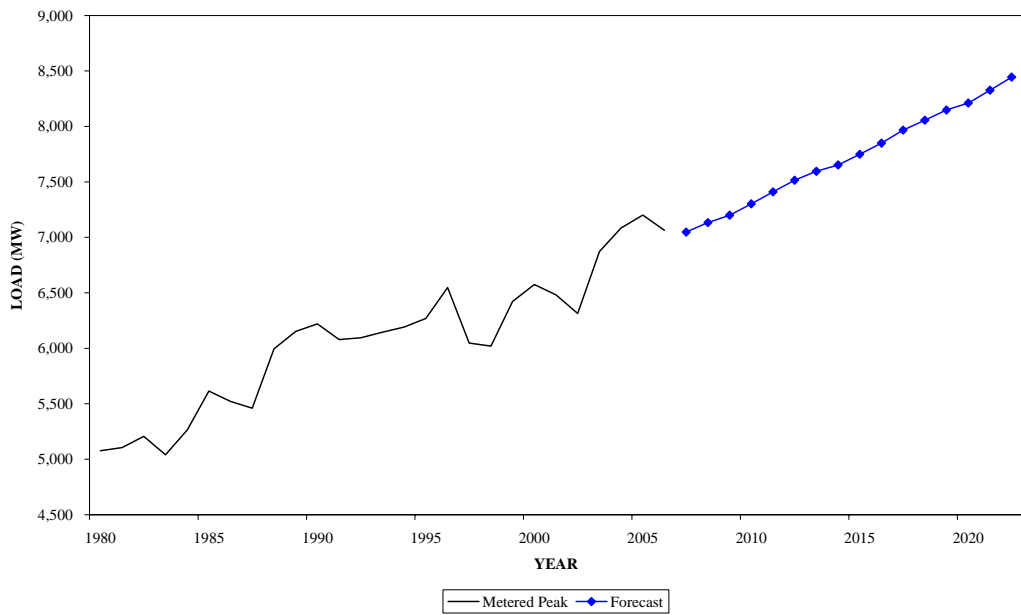
**WINTER PEAK DEMAND FOR PL
GEOGRAPHIC ZONE**



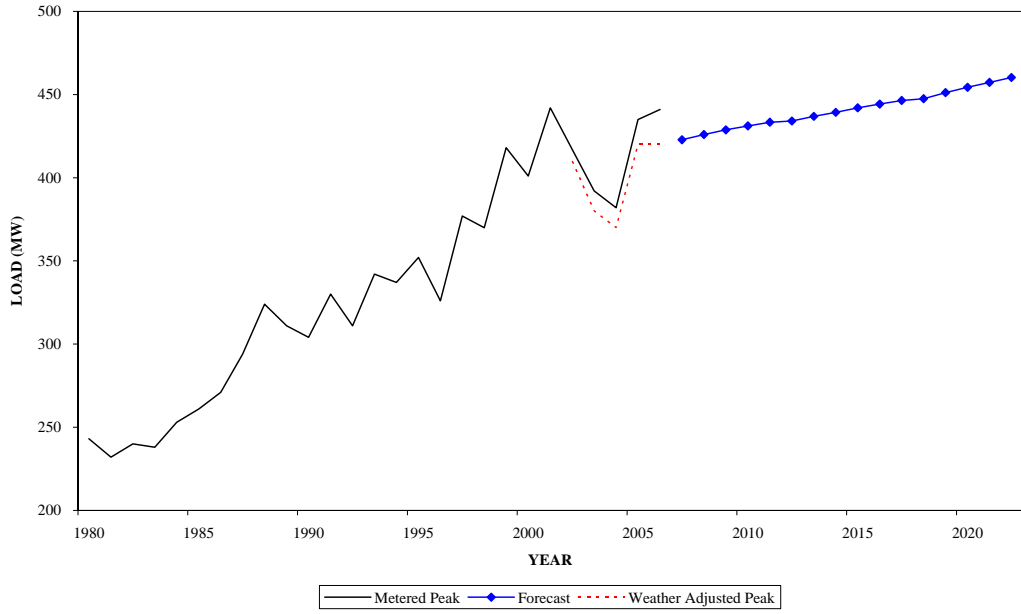
**SUMMER PEAK DEMAND FOR PS
GEOGRAPHIC ZONE**



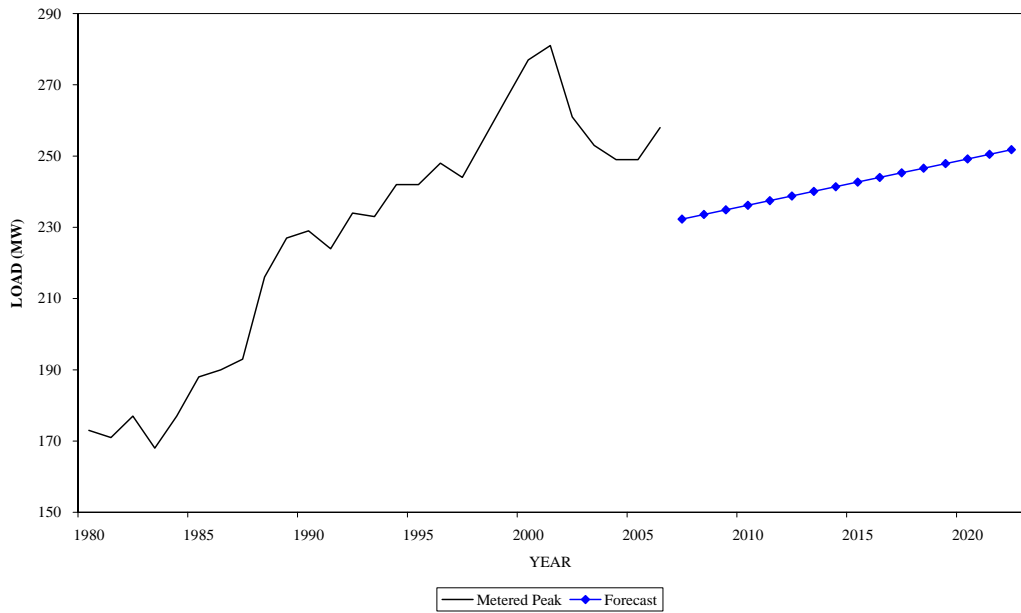
**WINTER PEAK DEMAND FOR PS
GEOGRAPHIC ZONE**



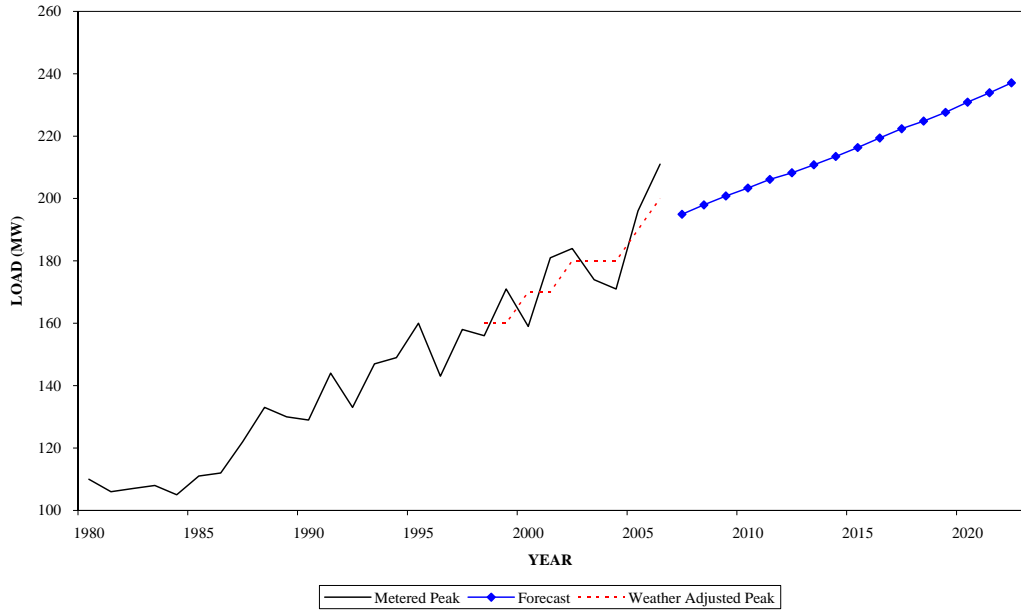
**SUMMER PEAK DEMAND FOR RECO
GEOGRAPHIC ZONE**



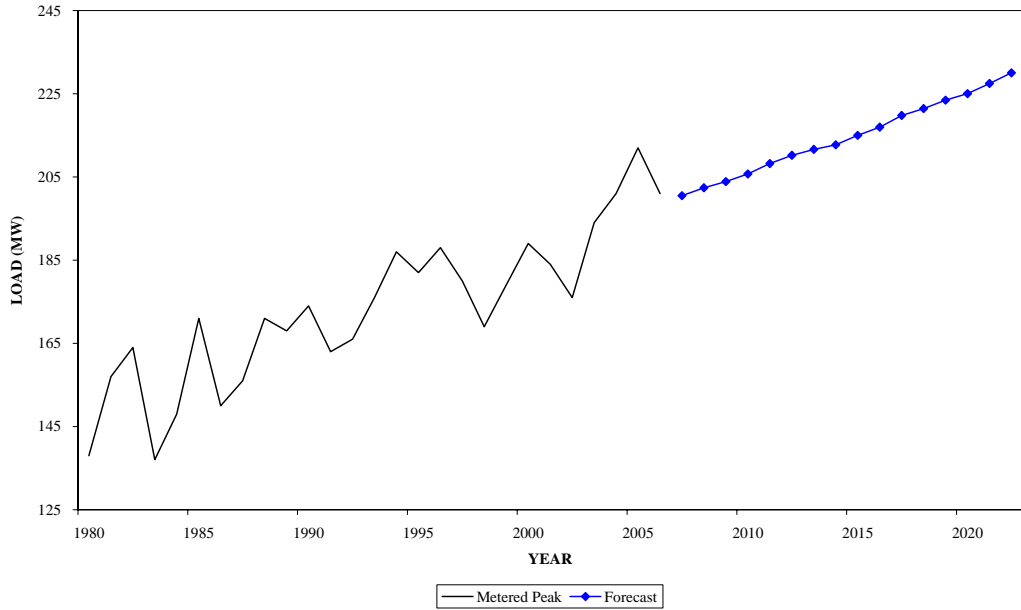
**WINTER PEAK DEMAND FOR RECO
GEOGRAPHIC ZONE**



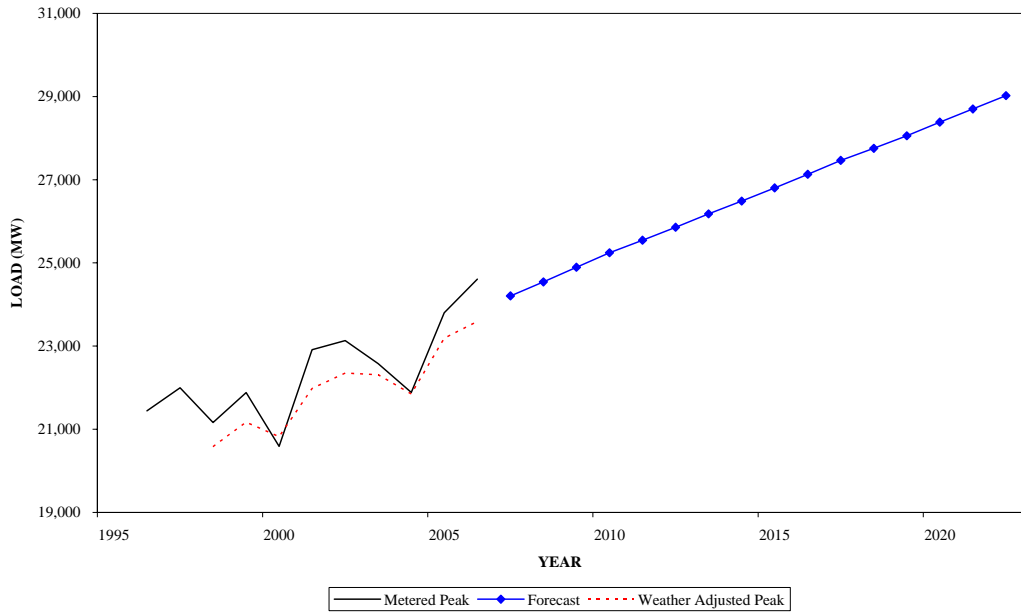
**SUMMER PEAK DEMAND FOR UGI
GEOGRAPHIC ZONE**



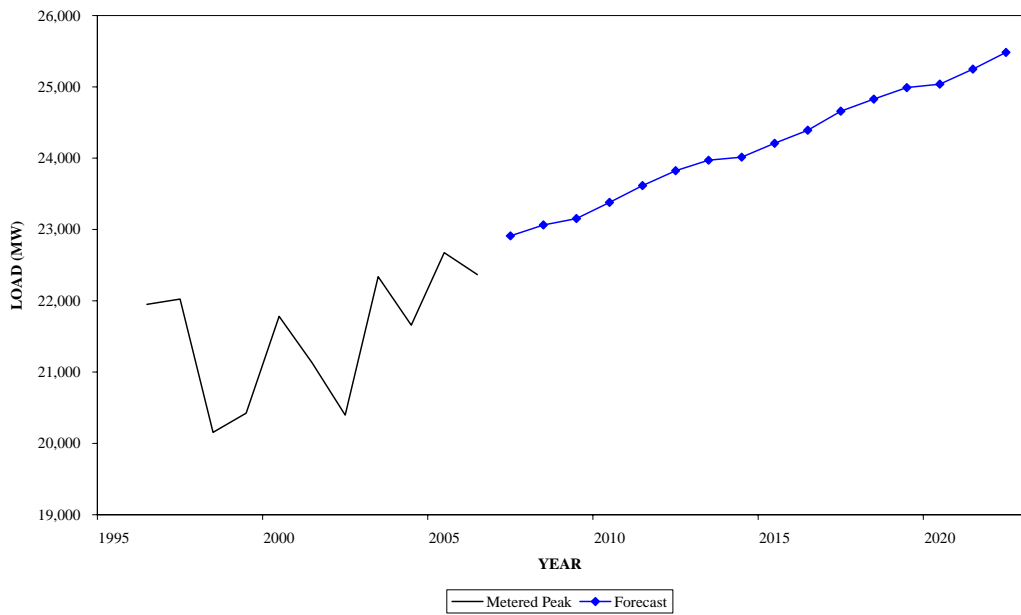
**WINTER PEAK DEMAND FOR UGI
GEOGRAPHIC ZONE**



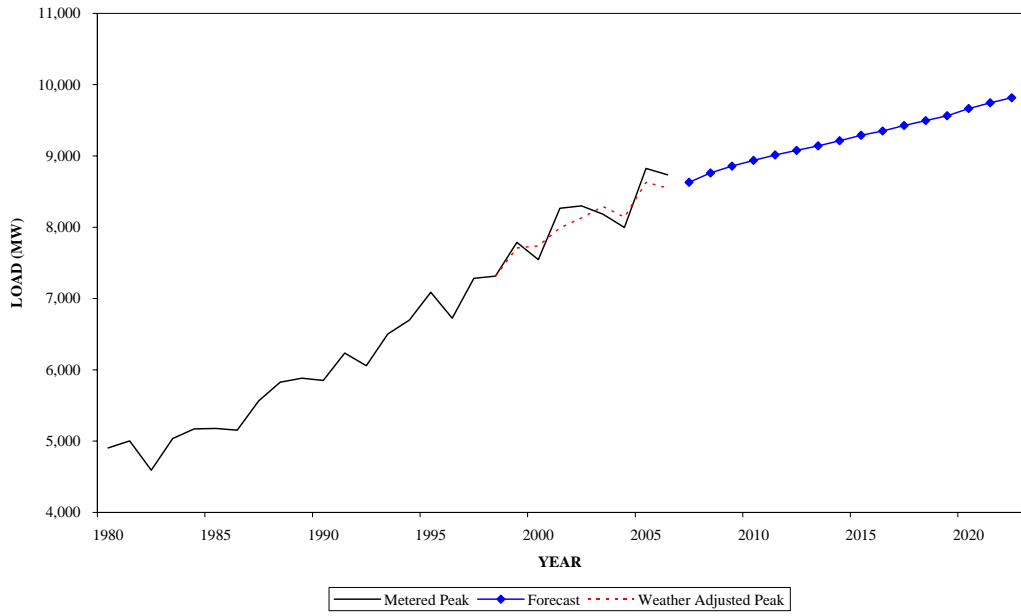
**SUMMER PEAK DEMAND FOR AEP
GEOGRAPHIC ZONE**



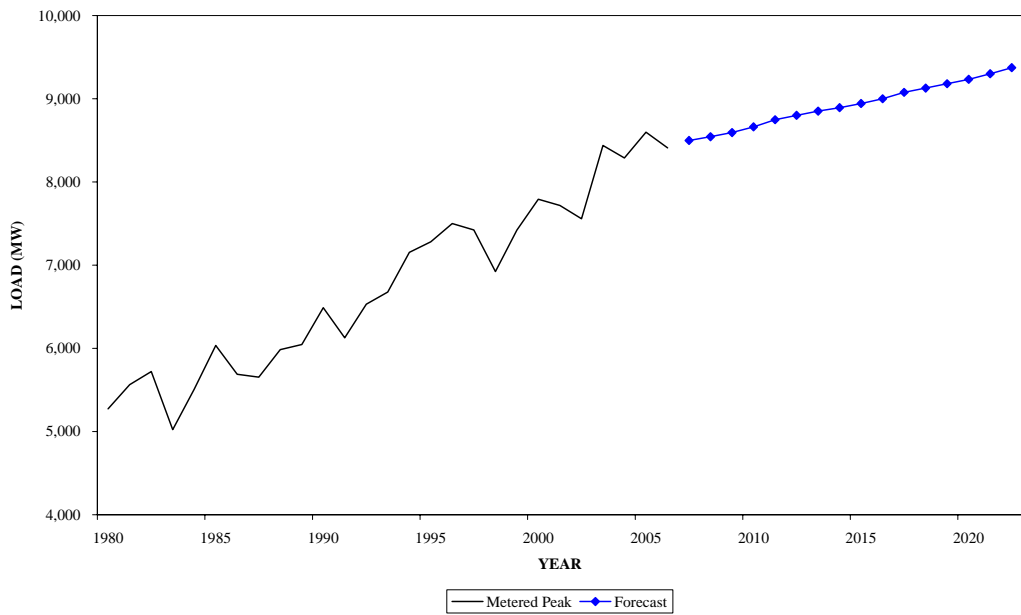
**WINTER PEAK DEMAND FOR AEP
GEOGRAPHIC ZONE**



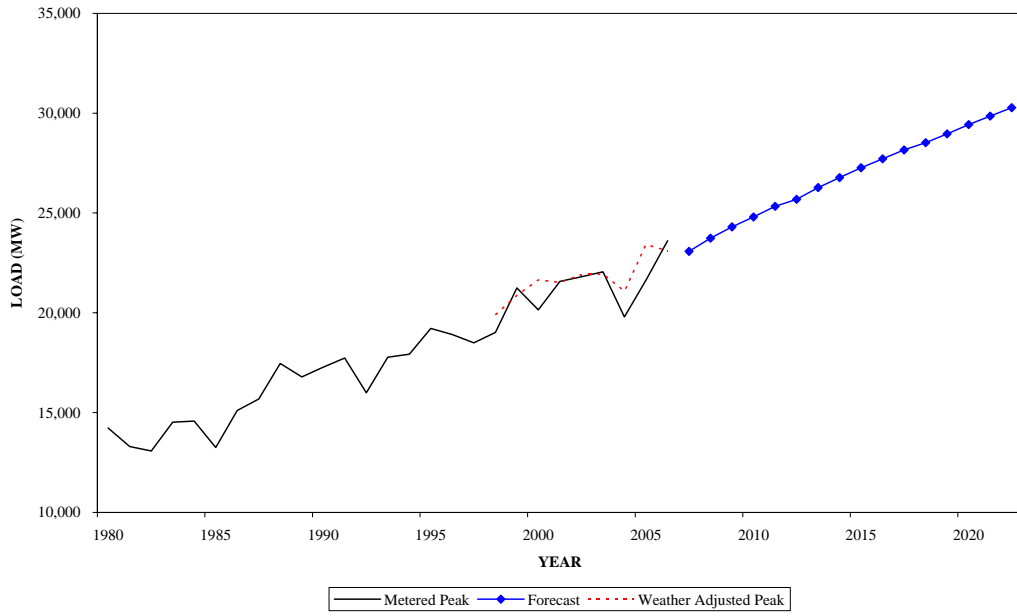
**SUMMER PEAK DEMAND FOR APS
GEOGRAPHIC ZONE**



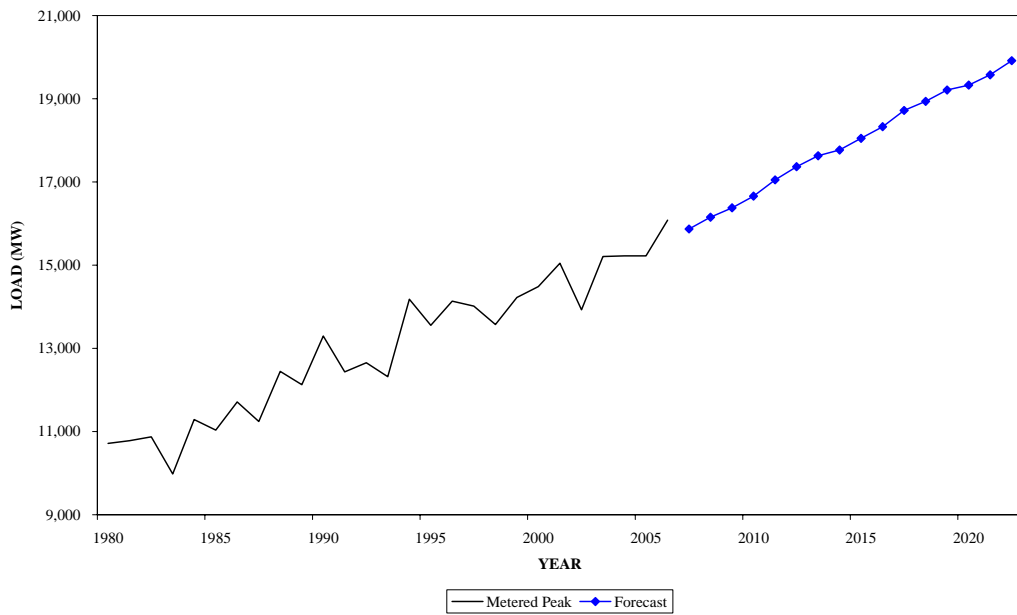
**WINTER PEAK DEMAND FOR APS
GEOGRAPHIC ZONE**



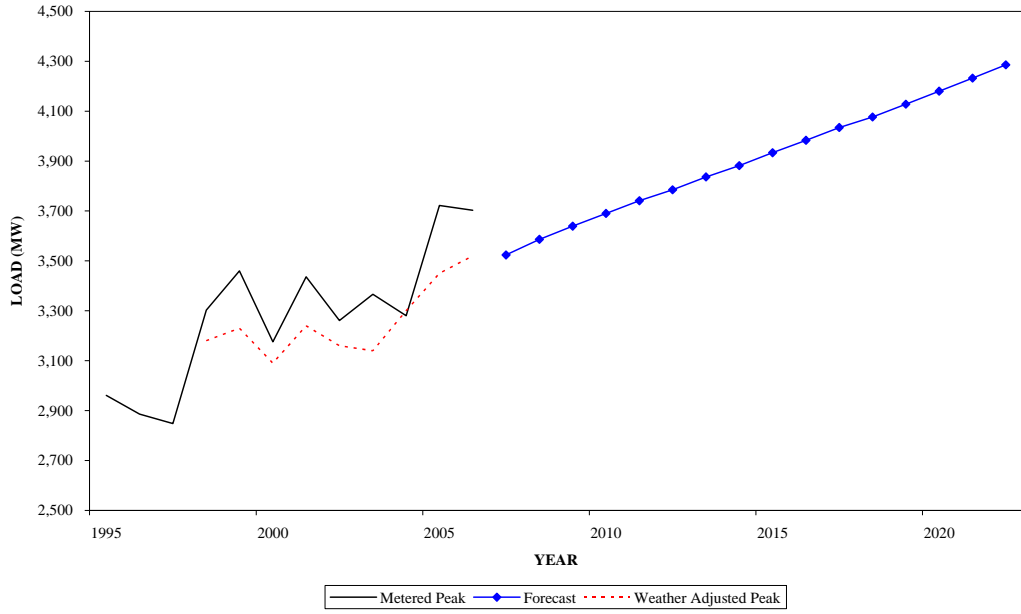
**SUMMER PEAK DEMAND FOR COMED
GEOGRAPHIC ZONE**



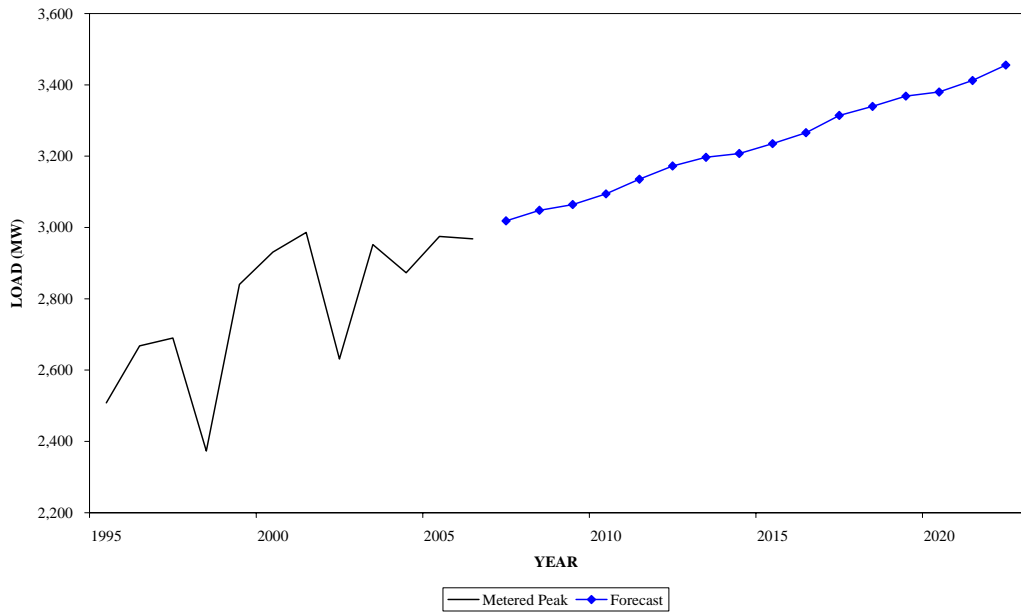
**WINTER PEAK DEMAND FOR COMED
GEOGRAPHIC ZONE**



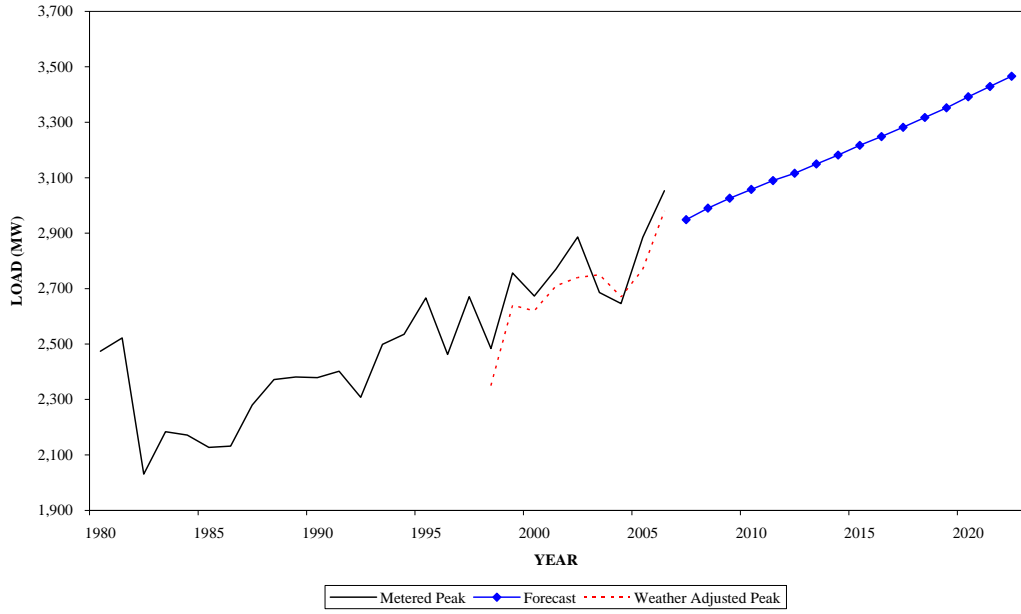
**SUMMER PEAK DEMAND FOR DAY
GEOGRAPHIC ZONE**



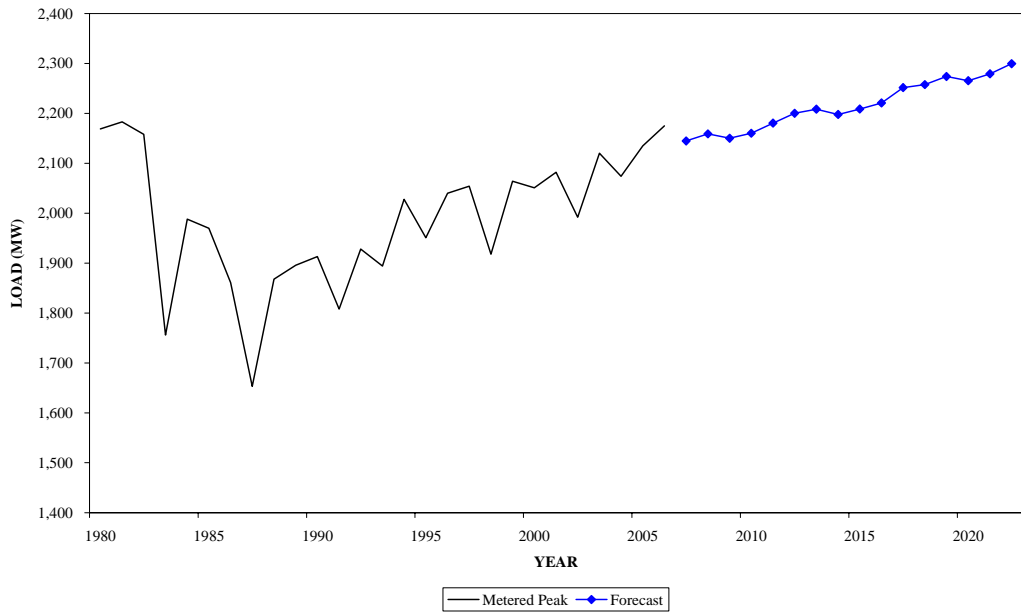
**WINTER PEAK DEMAND FOR DAY
GEOGRAPHIC ZONE**



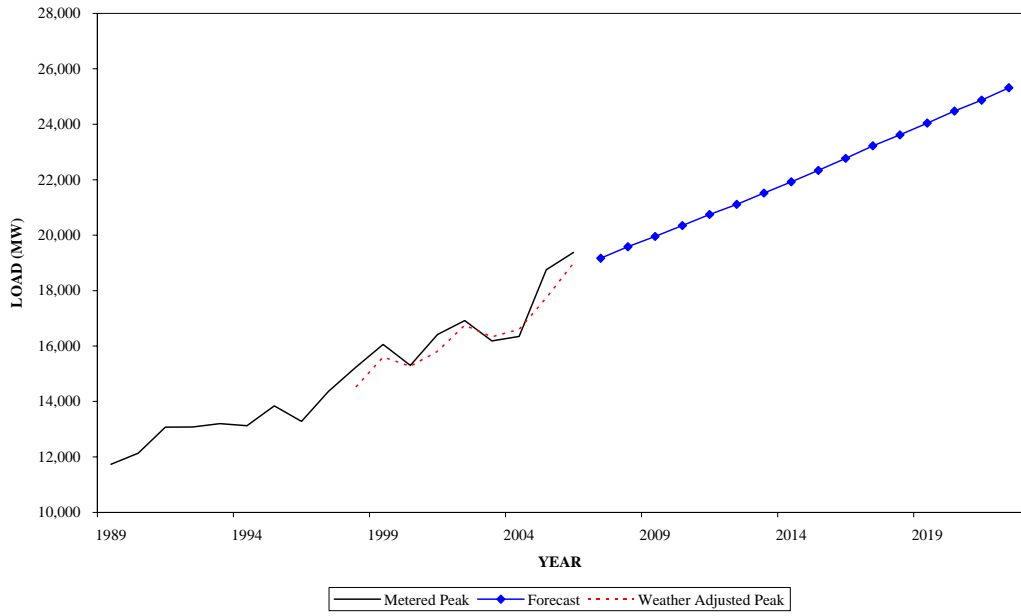
**SUMMER PEAK DEMAND FOR DLCO
GEOGRAPHIC ZONE**



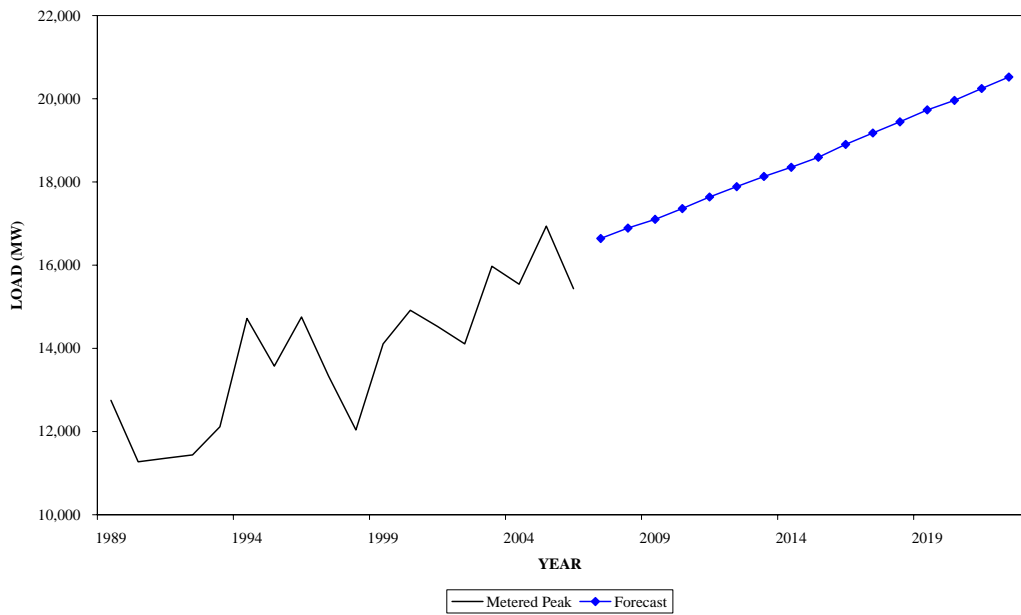
**WINTER PEAK DEMAND FOR DLCO
GEOGRAPHIC ZONE**



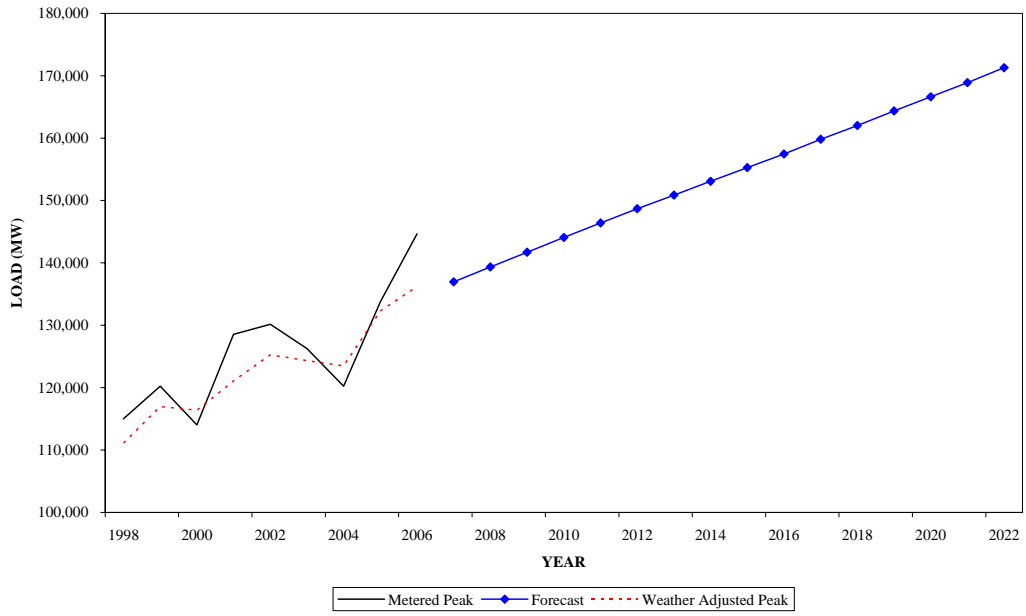
**SUMMER PEAK DEMAND FOR DOM
GEOGRAPHIC ZONE**



**WINTER PEAK DEMAND FOR DOM
GEOGRAPHIC ZONE**



SUMMER PEAK DEMAND FOR PJM RTO



WINTER PEAK DEMAND FOR PJM RTO

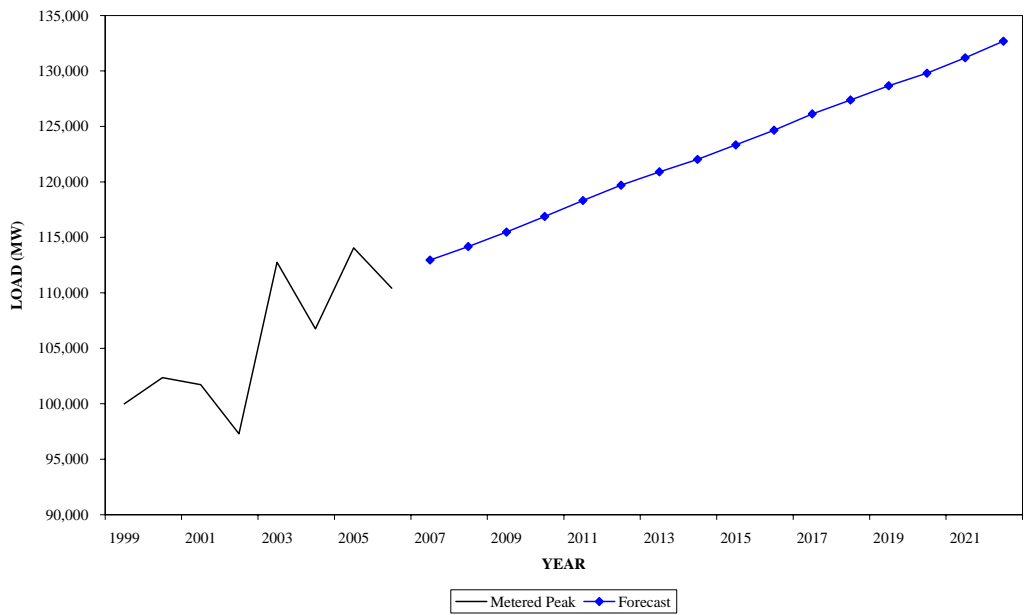


Table A-1

**PJM MID-ATLANTIC
SUMMER PEAK LOAD COMPARISONS OF THE CURRENT FORECAST
TO THE FEBRUARY 2006 LOAD FORECAST REPORT**

INCREASE OR DECREASE OVER PRIOR FORECAST

	2007		2012		2016	
	MW	%	MW	%	MW	%
AE	22	0.8%	85	2.9%	157	5.0%
BGE	12	0.2%	52	0.7%	34	0.4%
DPL	36	0.9%	(1)	0.0%	(26)	-0.5%
JCPL	(176)	-2.7%	(347)	-4.7%	(399)	-5.0%
METED	30	1.1%	27	0.9%	40	1.2%
PECO	123	1.5%	159	1.8%	262	2.8%
PENLC	29	1.0%	(5)	-0.2%	(4)	-0.1%
PEPCO	(49)	-0.7%	(4)	0.0%	38	0.5%
PL	116	1.6%	194	2.6%	265	3.3%
PS	(40)	-0.4%	(166)	-1.4%	(281)	-2.2%
RECO	2	0.4%	(13)	-2.9%	(22)	-4.7%
UGI	6	3.1%	8	4.1%	11	5.5%
PJM MID-ATLANTIC	108	0.2%	(9)	0.0%	75	0.1%
FE/GPU	(117)	-1.0%	(322)	-2.4%	(359)	-2.5%
PLGRP	121	1.7%	202	2.6%	276	3.4%

Table A-1

**PJM WESTERN, PJM SOUTHERN AND PJM RTO
SUMMER PEAK LOAD COMPARISONS OF THE CURRENT FORECAST
TO THE FEBRUARY 2006 LOAD FORECAST REPORT**

INCREASE OR DECREASE OVER PRIOR FORECAST

	2007		2012		2016	
	MW	%	MW	%	MW	%
AEP	621	2.6%	714	2.8%	940	3.6%
APS	507	6.2%	482	5.6%	445	5.0%
COMED	438	1.9%	(66)	-0.3%	(402)	-1.4%
DAY	50	1.4%	(21)	-0.6%	(46)	-1.1%
DLCO	120	4.2%	186	6.3%	226	7.5%
PJM WESTERN	1,694	2.9%	1,264	2.0%	1,135	1.7%
DOM	455	2.4%	448	2.2%	594	2.7%
PJM RTO	1,214	0.9%	751	0.5%	557	0.4%

Table A-2

**PJM MID-ATLANTIC
WINTER PEAK LOAD COMPARISONS OF THE CURRENT FORECAST
TO THE FEBRUARY 2006 LOAD FORECAST REPORT**

INCREASE OR DECREASE OVER PRIOR FORECAST

	06/07		11/12		15/16	
	MW	%	MW	%	MW	%
AE	24	1.3%	11	0.6%	9	0.4%
BGE	110	1.9%	71	1.1%	12	0.2%
DPL	72	2.2%	15	0.4%	(32)	-0.8%
JCPL	4	0.1%	(121)	-2.7%	(224)	-4.7%
METED	35	1.4%	23	0.9%	5	0.2%
PECO	70	1.1%	57	0.8%	41	0.6%
PENLC	44	1.6%	(0)	0.0%	(48)	-1.5%
PEPCO	2	0.0%	(55)	-1.0%	(79)	-1.3%
PL	167	2.4%	121	1.6%	69	0.9%
PS	30	0.4%	(120)	-1.6%	(249)	-3.1%
RECO	3	1.4%	(3)	-1.3%	(8)	-3.2%
UGI	6	3.3%	6	3.0%	7	3.3%
PJM MID-ATLANTIC	545	1.2%	(47)	-0.1%	(517)	-1.0%
FE/GPU	75	0.8%	(129)	-1.3%	(269)	-2.5%
PLGRP	173	2.4%	127	1.7%	76	1.0%

Table A-2

**PJM WESTERN, PJM SOUTHERN AND PJM RTO
WINTER PEAK LOAD COMPARISONS OF THE CURRENT FORECAST
TO THE FEBRUARY 2006 LOAD FORECAST REPORT**

INCREASE OR DECREASE OVER PRIOR FORECAST

	06/07		11/12		15/16	
	MW	%	MW	%	MW	%
AEP	261	1.2%	(190)	-0.8%	(540)	-2.2%
APS	506	6.3%	347	4.1%	210	2.4%
COMED	(10)	-0.1%	(856)	-4.7%	(1,517)	-7.6%
DAY	30	1.0%	(72)	-2.2%	(155)	-4.5%
DLCO	21	1.0%	(20)	-0.9%	(69)	-3.0%
PJM WESTERN	592	1.2%	(1,140)	-2.1%	(2,330)	-4.0%
DOM	(132)	-0.8%	(638)	-3.4%	(1,015)	-5.1%
PJM RTO	844	0.8%	(1,902)	-1.6%	(3,678)	-2.9%

**PJM CONTROL AREA - JANUARY 2007
UNRESTRICTED PEAK FORECAST: SUMMER/WINTER
2007-2017**

SUMMER UNRESTRICTED PEAK (MW)

		2007	2008	2009	2010	2011	2012	2013	2014	2015	2016	2017	Annual Growth Rate (10 yr)
PJM MID-ATLANTIC		59,720	60,819	61,886	62,896	63,887	64,639	65,627	66,559	67,544	68,492	69,447	1.5%
	%		1.8%	1.8%	1.6%	1.6%	1.2%	1.5%	1.4%	1.5%	1.4%	1.4%	
PJM WESTERN		60,881	62,084	63,162	64,149	65,112	65,895	66,923	67,860	68,812	69,700	70,622	1.5%
	%		2.0%	1.7%	1.6%	1.5%	1.2%	1.6%	1.4%	1.4%	1.3%	1.3%	
PJM SOUTHERN		19,167	19,583	19,956	20,347	20,746	21,110	21,519	21,923	22,334	22,769	23,222	1.9%
	%		2.2%	1.9%	2.0%	2.0%	1.8%	1.9%	1.9%	1.9%	1.9%	2.0%	
PJM RTO		136,961	139,342	141,710	144,082	146,404	148,687	150,866	153,081	155,290	157,450	159,822	1.6%
	%		1.7%	1.7%	1.7%	1.6%	1.6%	1.5%	1.5%	1.4%	1.4%	1.5%	

WINTER UNRESTRICTED PEAK (MW)

		06/07	07/08	08/09	09/10	10/11	11/12	12/13	13/14	14/15	15/16	16/17	Annual Growth Rate (10 yr)
PJM MID-ATLANTIC		46,371	46,894	47,354	47,957	48,619	49,191	49,673	50,059	50,602	51,187	51,817	1.1%
	%		1.1%	1.0%	1.3%	1.4%	1.2%	1.0%	0.8%	1.1%	1.2%	1.2%	
PJM WESTERN		51,098	51,544	51,964	52,564	53,232	53,786	54,245	54,596	55,112	55,653	56,454	1.0%
	%		0.9%	0.8%	1.2%	1.3%	1.0%	0.9%	0.6%	0.9%	1.0%	1.4%	
PJM SOUTHERN		16,640	16,890	17,101	17,359	17,638	17,885	18,132	18,353	18,594	18,903	19,177	1.4%
	%		1.5%	1.2%	1.5%	1.6%	1.4%	1.4%	1.2%	1.3%	1.7%	1.5%	
PJM RTO		112,958	114,178	115,484	116,884	118,330	119,703	120,916	122,031	123,342	124,664	126,135	1.1%
	%		1.1%	1.1%	1.2%	1.2%	1.2%	1.0%	0.9%	1.1%	1.1%	1.2%	

Note:

Projected PJM seasonal peak load under normal peak weather conditions in the absence of any load reductions due to active load management, voltage reductions or voluntary curtailments.

**PJM CONTROL AREA - JANUARY 2007
UNRESTRICTED PEAK FORECAST: SUMMER/WINTER
2018-2022**

SUMMER UNRESTRICTED PEAK (MW)

		2018	2019	2020	2021	2022	Annual Growth Rate (15 yr)
PJM MID-ATLANTIC		70,300	71,296	72,398	73,448	74,575	1.5%
	%	1.2%	1.4%	1.5%	1.4%	1.5%	
PJM WESTERN		71,403	72,280	73,240	74,130	75,013	1.4%
	%	1.1%	1.2%	1.3%	1.2%	1.2%	
PJM SOUTHERN		23,619	24,042	24,478	24,868	25,320	1.9%
	%	1.7%	1.8%	1.8%	1.6%	1.8%	
PJM RTO		162,024	164,355	166,616	168,900	171,295	1.5%
	%	1.4%	1.4%	1.4%	1.4%	1.4%	

WINTER UNRESTRICTED PEAK (MW)

		17/18	18/19	19/20	20/21	21/22	Annual Growth Rate (15 yr)
PJM MID-ATLANTIC		52,355	52,894	53,353	54,002	54,668	1.1%
	%	1.0%	1.0%	0.9%	1.2%	1.2%	
PJM WESTERN		56,793	57,356	57,557	58,125	58,895	1.0%
	%	0.6%	1.0%	0.4%	1.0%	1.3%	
PJM SOUTHERN		19,444	19,733	19,961	20,245	20,522	1.4%
	%	1.4%	1.5%	1.2%	1.4%	1.4%	
PJM RTO		127,389	128,672	129,801	131,188	132,686	1.1%
	%	1.0%	1.0%	0.9%	1.1%	1.1%	

Note:

Projected PJM seasonal peak load under normal peak weather conditions in the absence of any load reductions due to active load management, voltage reductions or voluntary curtailments.

Table B-1
SUMMER PEAK LOAD (MW) AND GROWTH RATES FOR
EACH PJM MID-ATLANTIC GEOGRAPHIC ZONE AND SUM OF GEOGRAPHIC ZONES
2007-2017

	METERED	UNRESTRICTED	NORMAL												Annual
	2006	2006	2006	2007	2008	2009	2010	2011	2012	2013	2014	2015	2016	2017	Growth Rate
															(10 yr)
AE	3,009	3,009	2,800	2,758	2,823	2,885	2,952	3,023	3,069	3,131	3,191	3,251	3,315	3,373	2.0%
%				-1.5%	2.4%	2.2%	2.3%	2.4%	1.5%	2.0%	1.9%	1.9%	2.0%	1.8%	
BGE	7,198	7,484	7,350	7,303	7,425	7,548	7,655	7,745	7,807	7,895	7,973	8,054	8,115	8,198	1.2%
%				-0.6%	1.7%	1.7%	1.4%	1.2%	0.8%	1.1%	1.0%	1.0%	0.8%	1.0%	
DPL	4,288	4,328	4,100	4,076	4,166	4,256	4,344	4,432	4,490	4,577	4,658	4,742	4,844	4,919	1.9%
%				-0.6%	2.2%	2.2%	2.1%	2.0%	1.3%	1.9%	1.8%	1.8%	2.1%	1.6%	
JCPL	6,702	6,751	6,290	6,333	6,467	6,607	6,748	6,886	6,994	7,136	7,268	7,404	7,545	7,688	2.0%
%				0.7%	2.1%	2.2%	2.1%	2.1%	1.6%	2.0%	1.9%	1.9%	1.9%	1.9%	
METED	2,996	3,000	2,850	2,853	2,908	2,966	3,016	3,071	3,108	3,154	3,201	3,252	3,300	3,349	1.6%
%				0.1%	1.9%	2.0%	1.7%	1.8%	1.2%	1.5%	1.5%	1.6%	1.5%	1.5%	
PECO	8,932	8,995	8,560	8,554	8,689	8,824	8,952	9,079	9,188	9,312	9,439	9,576	9,712	9,847	1.4%
%				-0.1%	1.6%	1.6%	1.4%	1.4%	1.2%	1.3%	1.4%	1.4%	1.4%	1.4%	
PENLC	3,069	3,069	2,840	2,824	2,873	2,922	2,970	3,013	3,044	3,088	3,127	3,171	3,212	3,248	1.4%
%				-0.6%	1.8%	1.7%	1.6%	1.4%	1.1%	1.4%	1.3%	1.4%	1.3%	1.1%	
PEPCO	6,947	6,947	6,920	6,972	7,126	7,238	7,341	7,439	7,515	7,641	7,748	7,853	7,937	8,032	1.4%
%				0.7%	2.2%	1.6%	1.4%	1.3%	1.0%	1.7%	1.4%	1.3%	1.1%	1.2%	
PL	7,554	7,688	7,230	7,196	7,317	7,441	7,557	7,673	7,768	7,880	7,985	8,100	8,213	8,333	1.5%
%				-0.5%	1.7%	1.7%	1.5%	1.5%	1.2%	1.4%	1.3%	1.4%	1.4%	1.5%	
PS	11,109	11,229	10,720	10,801	10,977	11,155	11,324	11,494	11,625	11,789	11,947	12,123	12,285	12,451	1.4%
%				0.8%	1.6%	1.6%	1.5%	1.5%	1.1%	1.4%	1.3%	1.5%	1.3%	1.4%	
RECO	441	441	420	423	426	429	431	433	434	437	439	442	444	446	0.5%
%				0.7%	0.7%	0.7%	0.6%	0.5%	0.2%	0.6%	0.6%	0.6%	0.5%	0.5%	
UGI	211	211	200	195	198	201	203	206	208	211	213	216	219	222	1.3%
%				-2.5%	1.5%	1.4%	1.3%	1.4%	1.0%	1.2%	1.3%	1.3%	1.4%	1.4%	
DIVERSITY (-)				567	577	587	597	606	613	623	631	641	650	659	1.5%
PJM MID-ATLANTIC	62,017	62,711		59,720	60,819	61,886	62,896	63,887	64,639	65,627	66,559	67,544	68,492	69,447	1.5%
%					1.8%	1.8%	1.6%	1.6%	1.2%	1.5%	1.4%	1.5%	1.4%	1.4%	
FE/GPU	11,685	12,808	11,852	11,881	12,117	12,362	12,598	12,831	13,006	13,235	13,452	13,680	13,907	14,132	1.8%
%				0.2%	2.0%	2.0%	1.9%	1.9%	1.4%	1.8%	1.6%	1.7%	1.7%	1.6%	
PLGRP	7,230	7,899	7,426	7,387	7,512	7,638	7,756	7,875	7,972	8,086	8,194	8,312	8,428	8,551	1.5%
%				-0.5%	1.7%	1.7%	1.5%	1.5%	1.2%	1.4%	1.3%	1.4%	1.4%	1.5%	

Note:

Normal 2006 and all forecast values are non-coincident as estimated by PJM staff.

Normal 2006 and all forecast values represent unrestricted peaks.

Forecasted and weather-normalized values for FE/GPU and PLGRP are calculated as the diversified sum of zonal non-coincident values.

Table B-1 (Continued)

SUMMER PEAK LOAD (MW) AND GROWTH RATES FOR
EACH PJM MID-ATLANTIC GEOGRAPHIC ZONE AND SUM OF GEOGRAPHIC ZONES
2018-2022

		2018	2019	2020	2021	2022	Annual Growth Rate (15 yr)
AE		3,426	3,483	3,545	3,607	3,674	1.9%
	%	1.5%	1.7%	1.8%	1.8%	1.8%	
BGE		8,272	8,370	8,471	8,551	8,642	1.1%
	%	0.9%	1.2%	1.2%	1.0%	1.1%	
DPL		5,004	5,096	5,199	5,303	5,414	1.9%
	%	1.7%	1.8%	2.0%	2.0%	2.1%	
JCPL		7,814	7,959	8,106	8,261	8,441	1.9%
	%	1.6%	1.9%	1.8%	1.9%	2.2%	
METED		3,390	3,442	3,499	3,552	3,611	1.6%
	%	1.2%	1.5%	1.7%	1.5%	1.6%	
PECO		9,960	10,090	10,237	10,385	10,534	1.4%
	%	1.2%	1.3%	1.3%	1.4%	1.4%	
PENLC		3,280	3,320	3,363	3,405	3,446	1.3%
	%	1.0%	1.2%	1.3%	1.3%	1.2%	
PEPCO		8,123	8,224	8,361	8,458	8,560	1.4%
	%	1.1%	1.2%	1.7%	1.2%	1.2%	
PL		8,432	8,553	8,679	8,802	8,941	1.5%
	%	1.2%	1.4%	1.5%	1.4%	1.6%	
PS		12,594	12,757	12,941	13,128	13,321	1.4%
	%	1.2%	1.3%	1.4%	1.4%	1.5%	
RECO		448	451	454	457	460	0.6%
	%	0.2%	0.8%	0.7%	0.7%	0.6%	
UGI		225	228	231	234	237	1.3%
	%	1.1%	1.2%	1.4%	1.3%	1.4%	
DIVERSITY (-)		667	676	687	697	708	1.5%
PJM MID-ATLANTIC		70,300	71,296	72,398	73,448	74,575	1.5%
	%	1.2%	1.4%	1.5%	1.4%	1.5%	
FE/GPU		14,329	14,564	14,808	15,056	15,333	1.7%
	%	1.4%	1.6%	1.7%	1.7%	1.8%	
PLGRP		8,653	8,776	8,905	9,032	9,174	1.5%
	%	1.2%	1.4%	1.5%	1.4%	1.6%	

Note:

Normal 2006 and all forecast values are non-coincident as estimated by PJM staff.

Normal 2006 and all forecast values represent unrestricted peaks.

Forecasted and weather-normalized values for FE/GPU and PLGRP are calculated as the diversified sum of zonal non-coincident values.

Table B-1

**SUMMER PEAK LOAD (MW) AND GROWTH RATES FOR
EACH PJM WESTERN AND PJM SOUTHERN GEOGRAPHIC ZONE AND SUM OF GEOGRAPHIC ZONES
2007-2017**

		METERED 2006	UNRESTRICTED 2006	NORMAL 2006	2007	2008	2009	2010	2011	2012	2013	2014	2015	2016	2017	Annual Growth Rate (10 yr)
AEP		24,610	24,839	23,590	24,206	24,542	24,895	25,244	25,544	25,856	26,179	26,488	26,803	27,129	27,464	1.3%
	%				2.6%	1.4%	1.4%	1.4%	1.2%	1.2%	1.2%	1.2%	1.2%	1.2%	1.2%	
APS		8,734	8,734	8,550	8,630	8,762	8,858	8,938	9,014	9,078	9,142	9,214	9,290	9,350	9,427	0.9%
	%				0.9%	1.5%	1.1%	0.9%	0.9%	0.7%	0.7%	0.8%	0.8%	0.6%	0.8%	
COMED		23,613	23,995	23,100	23,076	23,738	24,304	24,804	25,332	25,687	26,270	26,771	27,269	27,712	28,159	2.0%
	%				-0.1%	2.9%	2.4%	2.1%	2.1%	1.4%	2.3%	1.9%	1.9%	1.6%	1.6%	
DAY		3,703	3,693	3,520	3,524	3,586	3,639	3,690	3,741	3,785	3,836	3,882	3,934	3,983	4,035	1.4%
	%				0.1%	1.8%	1.5%	1.4%	1.4%	1.2%	1.4%	1.2%	1.3%	1.3%	1.3%	
DLCO		3,053	3,053	2,980	2,949	2,990	3,026	3,058	3,090	3,116	3,149	3,182	3,217	3,248	3,282	1.1%
	%				-1.0%	1.4%	1.2%	1.1%	1.0%	0.9%	1.1%	1.0%	1.1%	1.0%	1.0%	
DIVERSITY (-)					1,504	1,534	1,560	1,585	1,608	1,628	1,653	1,676	1,700	1,722	1,744	1.5%
PJM WESTERN		63,490	64,227		60,881	62,084	63,162	64,149	65,112	65,895	66,923	67,860	68,812	69,700	70,622	1.5%
	%					2.0%	1.7%	1.6%	1.5%	1.2%	1.6%	1.4%	1.4%	1.3%	1.3%	
DOM		19,375	19,375	18,990	19,167	19,583	19,956	20,347	20,746	21,110	21,519	21,923	22,334	22,769	23,222	1.9%
	%				0.9%	2.2%	1.9%	2.0%	2.0%	1.8%	1.9%	1.9%	1.9%	1.9%	2.0%	
DIVERSITY (-)					2,807	3,145	3,294	3,311	3,341	2,956	3,203	3,261	3,400	3,511	3,469	
PJM RTO		144,644	145,951	136,200	136,961	139,342	141,710	144,082	146,404	148,687	150,866	153,081	155,290	157,450	159,822	1.6%
	%				0.6%	1.7%	1.7%	1.7%	1.6%	1.6%	1.5%	1.5%	1.4%	1.4%	1.5%	

Note:
Normal 2006 and all forecast values are non-coincident as estimated by PJM staff.
Normal 2006 and all forecast values represent unrestricted peaks.

Table B-1 (Continued)

SUMMER PEAK LOAD (MW) AND GROWTH RATES FOR
EACH PJM WESTERN AND PJM SOUTHERN GEOGRAPHIC ZONE AND SUM OF GEOGRAPHIC ZONES
2018-2022

		2018	2019	2020	2021	2022	Annual Growth Rate (15 yr)
AEP		27,755	28,055	28,385	28,701	29,022	1.2%
	%	1.1%	1.1%	1.2%	1.1%	1.1%	
APS		9,496	9,564	9,666	9,746	9,817	0.9%
	%	0.7%	0.7%	1.1%	0.8%	0.7%	
COMED		28,522	28,965	29,427	29,852	30,276	1.8%
	%	1.3%	1.6%	1.6%	1.4%	1.4%	
DAY		4,077	4,128	4,180	4,233	4,286	1.3%
	%	1.0%	1.3%	1.3%	1.3%	1.3%	
DLCO		3,317	3,352	3,392	3,429	3,466	1.1%
	%	1.1%	1.0%	1.2%	1.1%	1.1%	
DIVERSITY (-)		1,764	1,785	1,809	1,831	1,853	1.4%
PJM WESTERN		71,403	72,280	73,240	74,130	75,013	1.4%
	%	1.1%	1.2%	1.3%	1.2%	1.2%	
DOM		23,619	24,042	24,478	24,868	25,320	1.9%
	%	1.7%	1.8%	1.8%	1.6%	1.8%	
DIVERSITY (-)		3,298	3,263	3,500	3,545	3,613	
PJM RTO		162,024	164,355	166,616	168,900	171,295	1.5%
	%	1.4%	1.4%	1.4%	1.4%	1.4%	

Note:

Normal 2006 and all forecast values are non-coincident as estimated by PJM staff.

Normal 2006 and all forecast values represent unrestricted peaks.

Table B-2
WINTER PEAK LOAD (MW) AND GROWTH RATES FOR
EACH PJM MID-ATLANTIC GEOGRAPHIC ZONE AND SUM OF GEOGRAPHIC ZONES
2006/07-2016/17

	METERED	UNRESTRICTED													Annual
	05/06	05/06	06/07	07/08	08/09	09/10	10/11	11/12	12/13	13/14	14/15	15/16	16/17	(10 yr)	
AE	1,776	1,776	1,812	1,836	1,858	1,884	1,917	1,945	1,968	1,986	2,012	2,039	2,072	1.4%	
%				1.4%	1.2%	1.4%	1.8%	1.5%	1.2%	0.9%	1.3%	1.3%	1.7%		
BGE	5,792	5,792	6,027	6,075	6,116	6,177	6,244	6,293	6,321	6,334	6,371	6,421	6,475	0.7%	
%				0.8%	0.7%	1.0%	1.1%	0.8%	0.4%	0.2%	0.6%	0.8%	0.9%		
DPL	3,180	3,180	3,362	3,407	3,453	3,505	3,558	3,611	3,657	3,700	3,751	3,805	3,863	1.4%	
%				1.4%	1.3%	1.5%	1.5%	1.5%	1.3%	1.2%	1.4%	1.4%	1.5%		
JCPL	3,927	3,927	3,974	4,032	4,080	4,151	4,233	4,301	4,358	4,397	4,466	4,539	4,627	1.5%	
%				1.5%	1.2%	1.7%	2.0%	1.6%	1.3%	0.9%	1.6%	1.6%	1.9%		
METED	2,559	2,559	2,549	2,583	2,608	2,645	2,689	2,726	2,756	2,775	2,807	2,842	2,885	1.2%	
%				1.3%	1.0%	1.4%	1.7%	1.4%	1.1%	0.7%	1.2%	1.3%	1.5%		
PECO	6,550	6,550	6,531	6,605	6,675	6,755	6,853	6,931	6,997	7,055	7,138	7,222	7,320	1.1%	
%				1.1%	1.1%	1.2%	1.5%	1.1%	1.0%	0.8%	1.2%	1.2%	1.4%		
PENLC	2,821	2,821	2,799	2,834	2,860	2,899	2,945	2,989	3,018	3,036	3,069	3,105	3,153	1.2%	
%				1.3%	0.9%	1.4%	1.6%	1.5%	1.0%	0.6%	1.1%	1.2%	1.5%		
PEPCO	5,105	5,105	5,380	5,446	5,509	5,579	5,660	5,730	5,790	5,846	5,907	5,976	6,048	1.2%	
%				1.2%	1.2%	1.3%	1.4%	1.2%	1.1%	1.0%	1.1%	1.2%	1.2%		
PL	7,083	7,083	7,164	7,222	7,271	7,347	7,421	7,489	7,542	7,578	7,644	7,719	7,793	0.8%	
%				0.8%	0.7%	1.0%	1.0%	0.9%	0.7%	0.5%	0.9%	1.0%	1.0%		
PS	7,065	7,065	7,048	7,133	7,201	7,303	7,410	7,515	7,596	7,653	7,749	7,850	7,967	1.2%	
%				1.2%	0.9%	1.4%	1.5%	1.4%	1.1%	0.8%	1.3%	1.3%	1.5%		
RECO	258	258	232	234	235	236	237	239	240	241	243	244	245	0.5%	
%				0.6%	0.6%	0.6%	0.6%	0.5%	0.5%	0.5%	0.5%	0.5%	0.5%		
UGI	201	201	200	202	204	206	208	210	212	213	215	217	220	0.9%	
%				0.9%	0.7%	0.9%	1.2%	1.0%	0.7%	0.5%	1.1%	0.9%	1.3%		
DIVERSITY (-)			708	716	714	728	756	788	781	755	770	793	851	1.9%	
PJM MID-ATLANTIC	46,162	46,162	46,371	46,894	47,354	47,957	48,619	49,191	49,673	50,059	50,602	51,187	51,817	1.1%	
%				1.1%	1.0%	1.3%	1.4%	1.2%	1.0%	0.8%	1.1%	1.2%	1.2%		
FE/GPU	9,273	9,298	9,251	9,379	9,482	9,629	9,788	9,916	10,044	10,138	10,272	10,411	10,548	1.3%	
%				1.4%	1.1%	1.5%	1.7%	1.3%	1.3%	0.9%	1.3%	1.3%	1.3%		
PLGRP	7,280	7,280	7,360	7,420	7,470	7,548	7,625	7,695	7,749	7,786	7,855	7,931	8,008	0.8%	
%				0.8%	0.7%	1.0%	1.0%	0.9%	0.7%	0.5%	0.9%	1.0%	1.0%		

Note:
Normal 05/06 and all forecast values are non-coincident as estimated by PJM staff.
Normal 05/06 and all forecast values represent unrestricted peaks.
Forecasted values for PLGRP and FE/GPU are calculated as the diversified sum of zonal non-coincident forecasts.

Table B-2 (Continued)

**WINTER PEAK LOAD (MW) AND GROWTH RATES FOR
EACH PJM MID-ATLANTIC GEOGRAPHIC ZONE AND SUM OF GEOGRAPHIC ZONES
2017/18-2021/22**

		17/18	18/19	19/20	20/21	21/22	Annual Growth Rate (15 yr)
AE		2,095	2,126	2,141	2,171	2,205	1.3%
	%	1.1%	1.5%	0.7%	1.4%	1.6%	
BGE		6,507	6,550	6,577	6,635	6,687	0.7%
	%	0.5%	0.7%	0.4%	0.9%	0.8%	
DPL		3,916	3,969	4,022	4,087	4,153	1.4%
	%	1.4%	1.3%	1.3%	1.6%	1.6%	
JCPL		4,684	4,752	4,798	4,885	4,969	1.5%
	%	1.2%	1.5%	1.0%	1.8%	1.7%	
METED		2,917	2,951	2,975	3,015	3,059	1.2%
	%	1.1%	1.2%	0.8%	1.3%	1.5%	
PECO		7,395	7,473	7,539	7,636	7,741	1.1%
	%	1.0%	1.1%	0.9%	1.3%	1.4%	
PENLC		3,179	3,211	3,230	3,267	3,309	1.1%
	%	0.8%	1.0%	0.6%	1.1%	1.3%	
PEPCO		6,110	6,174	6,236	6,304	6,374	1.1%
	%	1.0%	1.0%	1.0%	1.1%	1.1%	
PL		7,855	7,918	7,968	8,051	8,129	0.8%
	%	0.8%	0.8%	0.6%	1.0%	1.0%	
PS		8,057	8,149	8,212	8,327	8,445	1.2%
	%	1.1%	1.1%	0.8%	1.4%	1.4%	
RECO		247	248	249	250	252	0.5%
	%	0.5%	0.5%	0.5%	0.5%	0.5%	
UGI		221	223	225	227	230	0.9%
	%	0.8%	0.9%	0.7%	1.1%	1.1%	
DIVERSITY (-)		828	851	819	853	885	1.5%
PJM MID-ATLANTIC		52,355	52,894	53,353	54,002	54,668	1.1%
	%	1.0%	1.0%	0.9%	1.2%	1.2%	
FE/GPU		10,690	10,815	10,929	11,078	11,231	1.3%
	%	1.3%	1.2%	1.0%	1.4%	1.4%	
PLGRP		8,072	8,137	8,188	8,274	8,354	0.8%
	%	0.8%	0.8%	0.6%	1.0%	1.0%	

Note:

Normal 05/06 and all forecast values are non-coincident as estimated by PJM staff.

Normal 05/06 and all forecast values represent unrestricted peaks.

Forecasted values for PLGRP and FE/GPU are calculated as the diversified sum of zonal non-coincident forecasts.

Table B-2
WINTER PEAK LOAD (MW) AND GROWTH RATES FOR
EACH PJM WESTERN AND PJM SOUTHERN GEOGRAPHIC ZONE AND SUM OF GEOGRAPHIC ZONES
2006/07-2016/17

		METERED	UNRESTRICTED												Annual
		05/06	05/06	06/07	07/08	08/09	09/10	10/11	11/12	12/13	13/14	14/15	15/16	16/17	Growth Rate
															(10 yr)
AEP		22,367	22,367	22,910	23,064	23,153	23,380	23,616	23,824	23,971	24,015	24,208	24,392	24,659	0.7%
	%				0.7%	0.4%	1.0%	1.0%	0.9%	0.6%	0.2%	0.8%	0.8%	1.1%	
APS		8,410	8,410	8,499	8,544	8,594	8,662	8,748	8,800	8,852	8,893	8,943	9,000	9,077	0.7%
	%				0.5%	0.6%	0.8%	1.0%	0.6%	0.6%	0.5%	0.6%	0.6%	0.9%	
COMED		16,081	16,081	15,869	16,151	16,378	16,658	17,050	17,365	17,629	17,767	18,050	18,328	18,719	1.7%
	%				1.8%	1.4%	1.7%	2.4%	1.8%	1.5%	0.8%	1.6%	1.5%	2.1%	
DAY		2,968	2,968	3,018	3,048	3,064	3,094	3,136	3,172	3,197	3,208	3,235	3,266	3,314	0.9%
	%				1.0%	0.5%	1.0%	1.3%	1.2%	0.8%	0.3%	0.9%	0.9%	1.5%	
DLCO		2,175	2,175	2,145	2,159	2,150	2,160	2,181	2,200	2,208	2,198	2,209	2,221	2,252	0.5%
	%				0.7%	-0.4%	0.5%	0.9%	0.9%	0.4%	-0.5%	0.5%	0.5%	1.4%	
DIVERSITY (-)				1,344	1,422	1,375	1,390	1,498	1,576	1,611	1,484	1,532	1,554	1,567	1.5%
PJM WESTERN		50,986	50,986	51,098	51,544	51,964	52,564	53,232	53,786	54,245	54,596	55,112	55,653	56,454	1.0%
	%				0.9%	0.8%	1.2%	1.3%	1.0%	0.9%	0.6%	0.9%	1.0%	1.4%	
DOM		15,435	15,435	16,640	16,890	17,101	17,359	17,638	17,885	18,132	18,353	18,594	18,903	19,177	1.4%
	%				1.5%	1.2%	1.5%	1.6%	1.4%	1.4%	1.2%	1.3%	1.7%	1.5%	
DIVERSITY (-)				1,151	1,150	934	996	1,159	1,159	1,134	977	966	1,078	1,312	
PJM RTO		110,415	110,415	112,958	114,178	115,484	116,884	118,330	119,703	120,916	122,031	123,342	124,664	126,135	1.1%
	%				1.1%	1.1%	1.2%	1.2%	1.2%	1.0%	0.9%	1.1%	1.1%	1.2%	

Note:
Normal 05/06 and all forecast values are non-coincident as estimated by PJM staff.
Normal 05/06 and all forecast values represent unrestricted peaks.

Table B-2 (Continued)

**WINTER PEAK LOAD (MW) AND GROWTH RATES FOR
EACH PJM WESTERN AND PJM SOUTHERN GEOGRAPHIC ZONE AND SUM OF GEOGRAPHIC ZONES
2017/18-2021/22**

		17/18	18/19	19/20	20/21	21/22	Annual Growth Rate (15 yr)
AEP		24,828	24,989	25,038	25,249	25,483	0.7%
	%	0.7%	0.7%	0.2%	0.8%	0.9%	
APS		9,128	9,180	9,233	9,300	9,374	0.7%
	%	0.6%	0.6%	0.6%	0.7%	0.8%	
COMED		18,939	19,209	19,328	19,575	19,916	1.5%
	%	1.2%	1.4%	0.6%	1.3%	1.7%	
DAY		3,340	3,369	3,380	3,412	3,455	0.9%
	%	0.8%	0.9%	0.3%	1.0%	1.3%	
DLCO		2,258	2,274	2,265	2,279	2,300	0.5%
	%	0.3%	0.7%	-0.4%	0.6%	0.9%	
DIVERSITY (-)		1,698	1,666	1,687	1,691	1,633	1.3%
PJM WESTERN		56,793	57,356	57,557	58,125	58,895	1.0%
	%	0.6%	1.0%	0.4%	1.0%	1.3%	
DOM		19,444	19,733	19,961	20,245	20,522	1.4%
	%	1.4%	1.5%	1.2%	1.4%	1.4%	
DIVERSITY (-)		1,203	1,311	1,070	1,184	1,399	
PJM RTO		127,389	128,672	129,801	131,188	132,686	1.1%
	%	1.0%	1.0%	0.9%	1.1%	1.1%	

Note:
Normal 05/06 and all forecast values are non-coincident as estimated by PJM staff.
Normal 05/06 and all forecast values represent unrestricted peaks.

Table B-3

**SPRING (APRIL) PEAK LOAD (MW) AND GROWTH RATES FOR
EACH PJM MID-ATLANTIC GEOGRAPHIC ZONE AND SUM OF GEOGRAPHIC ZONES
2007-2022**

	2007	2008	2009	2010	2011	2012	2013	2014	2015	2016	2017	2018	2019	2020	2021	2022
AE	1,553	1,573	1,613	1,646	1,684	1,732	1,767	1,796	1,831	1,867	1,901	1,939	1,968	1,991	2,035	2,080
BGE	4,922	4,967	5,040	5,114	5,126	5,165	5,221	5,266	5,316	5,334	5,365	5,433	5,529	5,581	5,634	5,667
DPL	2,711	2,753	2,809	2,855	2,871	2,911	2,961	3,019	3,065	3,106	3,129	3,196	3,244	3,313	3,370	3,408
JCPL	3,381	3,437	3,508	3,578	3,649	3,709	3,773	3,873	3,941	3,994	4,072	4,150	4,224	4,353	4,451	4,494
METED	2,234	2,253	2,287	2,331	2,337	2,385	2,418	2,423	2,447	2,489	2,514	2,558	2,585	2,604	2,658	2,672
PECO	5,627	5,713	5,863	5,921	5,931	5,996	6,092	6,172	6,315	6,326	6,368	6,478	6,569	6,724	6,825	6,826
PENLC	2,477	2,498	2,541	2,574	2,609	2,652	2,681	2,711	2,742	2,777	2,807	2,841	2,870	2,895	2,935	2,968
PEPCO	4,510	4,586	4,661	4,763	4,774	4,812	4,876	4,949	5,002	5,064	5,095	5,156	5,210	5,287	5,429	5,412
PL	5,874	5,914	5,991	6,074	6,150	6,253	6,325	6,394	6,443	6,523	6,596	6,717	6,804	6,847	6,941	7,029
PS	6,381	6,483	6,611	6,708	6,779	6,861	6,987	7,077	7,191	7,292	7,362	7,481	7,584	7,701	7,828	7,950
RECO	210	208	209	207	204	201	200	201	202	198	195	195	193	196	195	192
UGI	157	159	161	162	164	167	169	170	172	174	175	178	181	182	185	187
DIVERSITY (-)	1,305	1,322	1,346	1,367	1,378	1,397	1,417	1,436	1,456	1,472	1,486	1,510	1,531	1,554	1,581	1,594
PJM MID-ATLANTIC	38,730	39,223	39,947	40,566	40,899	41,448	42,052	42,614	43,209	43,672	44,093	44,813	45,429	46,119	46,904	47,292
FE/GPU	7,877	7,972	8,116	8,259	8,367	8,514	8,637	8,769	8,888	9,015	9,144	9,296	9,423	9,591	9,779	9,866
PLGRP	6,029	6,070	6,149	6,234	6,311	6,417	6,492	6,561	6,612	6,694	6,769	6,893	6,982	7,027	7,123	7,213

Table B-3

**SPRING (APRIL) PEAK LOAD (MW) AND GROWTH RATES FOR
EACH PJM WESTERN AND PJM SOUTHERN GEOGRAPHIC ZONE AND SUM OF GEOGRAPHIC ZONES
2007-2022**

	2007	2008	2009	2010	2011	2012	2013	2014	2015	2016	2017	2018	2019	2020	2021	2022
AEP	19,486	19,647	19,882	20,166	20,408	20,621	20,739	20,936	21,144	21,280	21,368	21,620	21,837	22,029	22,215	22,290
APS	6,997	7,007	7,044	7,092	7,136	7,201	7,267	7,286	7,304	7,359	7,400	7,459	7,517	7,534	7,591	7,637
COMED	14,093	14,464	14,945	15,292	15,487	15,891	16,265	16,525	16,884	17,196	17,430	17,877	18,318	18,428	18,895	19,147
DAY	2,619	2,645	2,689	2,710	2,739	2,776	2,808	2,835	2,869	2,901	2,928	2,969	3,014	3,043	3,085	3,102
DLCO	1,999	2,007	2,060	2,082	2,071	2,092	2,117	2,134	2,187	2,173	2,150	2,217	2,243	2,296	2,327	2,315
DIVERSITY (-)	1,106	1,120	1,141	1,158	1,171	1,189	1,204	1,216	1,233	1,246	1,255	1,276	1,295	1,305	1,324	1,333
PJM WESTERN	44,089	44,649	45,479	46,184	46,671	47,392	47,992	48,499	49,155	49,664	50,022	50,865	51,634	52,026	52,789	53,157
DOM	13,192	13,468	13,777	13,996	14,186	14,375	14,664	14,956	15,245	15,511	15,695	16,050	16,350	16,631	16,930	17,177
DIVERSITY (-)	2,747	2,520	2,996	3,105	2,594	2,745	2,476	2,463	2,724	2,595	2,385	2,732	2,656	2,833	3,438	2,990
PJM RTO	93,264	94,820	96,207	97,641	99,163	100,469	102,232	103,605	104,885	106,252	107,424	108,996	110,758	111,944	113,185	114,636

Table B-4

**FALL (OCTOBER) PEAK LOAD (MW) AND GROWTH RATES FOR
EACH PJM MID-ATLANTIC GEOGRAPHIC ZONE AND SUM OF GEOGRAPHIC ZONES
2007-2022**

	2007	2008	2009	2010	2011	2012	2013	2014	2015	2016	2017	2018	2019	2020	2021	2022
AE	1,633	1,663	1,707	1,743	1,790	1,854	1,894	1,932	1,975	2,000	2,051	2,108	2,147	2,183	2,214	2,257
BGE	4,763	4,808	4,858	4,891	4,960	5,094	5,120	5,150	5,178	5,183	5,296	5,408	5,451	5,459	5,471	5,530
DPL	2,638	2,684	2,725	2,761	2,817	2,889	2,940	2,987	3,031	3,068	3,136	3,207	3,263	3,308	3,362	3,424
JCPL	3,548	3,634	3,703	3,758	3,843	4,001	4,086	4,168	4,245	4,272	4,397	4,538	4,637	4,710	4,771	4,865
METED	2,135	2,167	2,196	2,218	2,262	2,313	2,342	2,371	2,397	2,417	2,460	2,508	2,542	2,566	2,587	2,628
PECO	5,677	5,754	5,833	5,893	5,957	6,147	6,226	6,313	6,400	6,411	6,575	6,719	6,811	6,885	6,940	7,025
PENLC	2,483	2,499	2,529	2,554	2,605	2,657	2,687	2,712	2,739	2,766	2,807	2,851	2,887	2,900	2,924	2,964
PEPCO	4,689	4,756	4,813	4,856	4,884	5,043	5,101	5,161	5,217	5,200	5,323	5,432	5,487	5,543	5,585	5,605
PL	5,607	5,668	5,725	5,790	5,882	5,986	6,038	6,101	6,147	6,194	6,295	6,406	6,481	6,525	6,577	6,679
PS	6,901	6,999	7,055	7,119	7,183	7,447	7,548	7,647	7,717	7,730	7,905	8,093	8,201	8,276	8,359	8,422
RECO	237	235	233	229	226	233	232	231	230	222	228	229	228	226	221	217
UGI	154	157	158	159	163	165	167	167	169	171	174	177	178	179	181	184
DIVERSITY (-)	916	929	940	950	964	992	1,005	1,017	1,029	1,033	1,056	1,079	1,094	1,104	1,114	1,127
PJM MID-ATLANTIC	39,548	40,095	40,597	41,021	41,607	42,836	43,376	43,921	44,415	44,600	45,591	46,597	47,221	47,655	48,077	48,671
FE/GPU	8,020	8,152	8,277	8,377	8,555	8,810	8,952	9,085	9,212	9,286	9,491	9,720	9,886	9,994	10,098	10,269
PLGRP	5,758	5,821	5,880	5,946	6,041	6,147	6,201	6,265	6,312	6,362	6,465	6,580	6,656	6,701	6,754	6,859

Table B-4

**FALL (OCTOBER) PEAK LOAD (MW) AND GROWTH RATES FOR
EACH PJM WESTERN AND PJM SOUTHERN GEOGRAPHIC ZONE AND SUM OF GEOGRAPHIC ZONES
2007-2022**

	2007	2008	2009	2010	2011	2012	2013	2014	2015	2016	2017	2018	2019	2020	2021	2022
AEP	18,863	19,054	19,227	19,356	19,634	19,987	20,192	20,384	20,537	20,651	20,923	21,257	21,456	21,568	21,684	21,888
APS	6,709	6,752	6,778	6,820	6,893	6,952	7,010	7,033	7,059	7,090	7,149	7,223	7,297	7,297	7,325	7,386
COMED	14,216	14,578	14,947	15,309	15,687	16,229	16,593	16,923	17,281	17,493	17,894	18,392	18,701	18,957	19,212	19,492
DAY	2,547	2,582	2,612	2,634	2,674	2,726	2,758	2,788	2,819	2,841	2,884	2,938	2,972	2,998	3,022	3,060
DLCO	1,963	1,976	1,992	2,003	2,021	2,072	2,088	2,101	2,118	2,122	2,155	2,204	2,228	2,231	2,243	2,259
DIVERSITY (-)	1,181	1,198	1,214	1,229	1,250	1,279	1,297	1,312	1,328	1,338	1,360	1,386	1,404	1,414	1,426	1,442
PJM WESTERN	43,117	43,744	44,341	44,893	45,657	46,687	47,344	47,917	48,487	48,858	49,646	50,627	51,251	51,637	52,060	52,643
DOM	13,431	13,605	13,800	13,903	14,219	14,712	14,962	15,209	15,414	15,594	16,064	16,410	16,684	16,918	17,121	17,426
DIVERSITY (-)	1,714	1,596	1,598	1,469	1,840	1,947	2,012	2,095	2,026	2,349	2,117	2,275	2,228	2,318	2,718	3,031
PJM RTO	94,382	95,848	97,140	98,348	99,643	102,288	103,670	104,952	106,290	106,704	109,184	111,360	112,927	113,892	114,540	115,709

Table B-5

MONTHLY PEAK FORECAST (MW) FOR EACH
PJM MID-ATLANTIC GEOGRAPHIC ZONE AND DIVERSIFIED SUM OF GEOGRAPHIC ZONES

	AE	BGE	DPL	JCPL	METED	PECO	PENLC	PEPCO	PL	PS	RECO	UGI	MID-ATLANTIC DIVERSITY	PJM MID- ATLANTIC
Jan 2007	1,812	6,027	3,362	3,966	2,549	6,531	2,799	5,380	7,164	7,048	226	200	693	46,371
Feb 2007	1,745	5,805	3,257	3,787	2,479	6,291	2,737	5,197	6,942	6,776	215	190	712	44,710
Mar 2007	1,600	5,208	2,908	3,532	2,342	5,797	2,595	4,588	6,329	6,395	206	173	436	41,236
Apr 2007	1,553	4,922	2,711	3,381	2,234	5,627	2,477	4,510	5,874	6,381	210	157	1,305	38,730
May 2007	1,873	5,680	3,045	4,458	2,367	6,602	2,417	5,590	5,891	8,277	315	151	793	45,874
Jun 2007	2,421	6,686	3,733	5,734	2,712	8,025	2,729	6,535	6,792	9,988	388	181	396	55,528
Jul 2007	2,758	7,303	4,076	6,333	2,853	8,554	2,824	6,972	7,196	10,801	423	195	567	59,720
Aug 2007	2,630	7,001	3,928	5,741	2,770	8,252	2,776	6,722	6,934	10,060	379	186	555	56,824
Sep 2007	2,213	6,191	3,377	4,990	2,444	7,117	2,596	5,972	6,254	8,916	324	167	878	49,684
Oct 2007	1,633	4,763	2,638	3,548	2,135	5,677	2,483	4,689	5,607	6,901	237	154	916	39,548
Nov 2007	1,589	4,892	2,784	3,555	2,247	5,762	2,592	4,475	6,080	6,490	212	171	381	40,468
Dec 2007	1,836	5,721	3,207	4,032	2,513	6,428	2,825	5,119	6,879	7,097	234	199	310	45,782
	AE	BGE	DPL	JCPL	METED	PECO	PENLC	PEPCO	PL	PS	RECO	UGI	DIVERSITY	MID-ATLANTIC
Jan 2008	1,834	6,075	3,407	4,026	2,583	6,605	2,834	5,446	7,222	7,133	227	202	701	46,894
Feb 2008	1,770	5,833	3,300	3,840	2,512	6,366	2,770	5,266	6,975	6,866	216	192	719	45,188
Mar 2008	1,611	5,230	2,942	3,574	2,360	5,872	2,617	4,643	6,350	6,468	204	173	439	41,606
Apr 2008	1,573	4,967	2,753	3,437	2,253	5,713	2,498	4,586	5,914	6,483	208	159	1,322	39,223
May 2008	1,901	5,734	3,089	4,527	2,395	6,674	2,438	5,653	5,926	8,363	312	152	802	46,361
Jun 2008	2,481	6,739	3,813	5,786	2,746	8,095	2,768	6,614	6,879	10,077	386	183	400	56,166
Jul 2008	2,823	7,425	4,166	6,467	2,908	8,689	2,873	7,126	7,317	10,977	426	198	577	60,819
Aug 2008	2,688	7,030	4,008	5,823	2,801	8,311	2,807	6,800	7,009	10,134	378	187	561	57,414
Sep 2008	2,286	6,315	3,489	5,129	2,504	7,326	2,645	6,116	6,407	9,133	327	172	901	50,948
Oct 2008	1,663	4,808	2,684	3,634	2,167	5,754	2,499	4,756	5,668	6,999	235	157	929	40,095
Nov 2008	1,613	4,917	2,794	3,578	2,261	5,808	2,595	4,521	6,101	6,554	208	172	384	40,737
Dec 2008	1,857	5,758	3,270	4,064	2,534	6,512	2,839	5,218	6,929	7,146	235	201	313	46,250
	AE	BGE	DPL	JCPL	METED	PECO	PENLC	PEPCO	PL	PS	RECO	UGI	DIVERSITY	MID-ATLANTIC
Jan 2009	1,858	6,116	3,453	4,080	2,608	6,675	2,860	5,509	7,271	7,201	229	204	708	47,354
Feb 2009	1,791	5,855	3,345	3,894	2,535	6,440	2,794	5,292	7,032	6,938	217	194	726	45,602
Mar 2009	1,645	5,320	3,001	3,646	2,402	6,039	2,657	4,730	6,440	6,577	203	176	448	42,388
Apr 2009	1,613	5,040	2,809	3,508	2,287	5,863	2,541	4,661	5,991	6,611	209	161	1,346	39,947
May 2009	1,953	5,811	3,150	4,629	2,436	6,785	2,477	5,718	6,011	8,491	313	154	815	47,113
Jun 2009	2,538	6,869	3,902	5,950	2,807	8,233	2,823	6,726	7,016	10,273	389	186	408	57,305
Jul 2009	2,885	7,548	4,256	6,607	2,966	8,824	2,922	7,238	7,441	11,155	429	201	587	61,886
Aug 2009	2,741	7,133	4,078	5,950	2,857	8,429	2,857	6,886	7,130	10,283	379	191	570	58,344
Sep 2009	2,351	6,434	3,573	5,280	2,565	7,474	2,700	6,230	6,542	9,317	331	176	920	52,053
Oct 2009	1,707	4,858	2,725	3,703	2,196	5,833	2,529	4,813	5,725	7,055	233	158	940	40,597
Nov 2009	1,650	5,004	2,866	3,669	2,308	5,914	2,642	4,605	6,189	6,658	208	176	391	41,499
Dec 2009	1,884	5,839	3,331	4,144	2,578	6,601	2,881	5,299	7,022	7,253	236	203	318	46,954

Table B-5

MONTHLY PEAK FORECAST (MW) FOR EACH
PJM WESTERN AND PJM SOUTHERN GEOGRAPHIC ZONE AND DIVERSIFIED SUM OF GEOGRAPHIC ZONES

	AEP	APS	COMED	DAY	DLCO	WESTERN DIVERSITY	PJM WESTERN	DOM	RTO DIVERSITY	PJM RTO
Jan 2007	22,910	8,499	15,679	3,018	2,132	1,141	51,098	16,640	1,151	112,958
Feb 2007	22,232	8,216	15,164	2,923	2,067	723	49,879	15,977	1,819	108,747
Mar 2007	20,692	7,503	14,253	2,715	1,979	869	46,273	13,973	2,257	99,225
Apr 2007	19,486	6,997	14,093	2,619	1,999	1,106	44,089	13,192	2,747	93,264
May 2007	20,293	6,972	16,609	2,810	2,285	1,208	47,759	15,214	4,287	104,560
Jun 2007	23,277	8,213	21,439	3,370	2,809	847	58,261	17,911	4,236	127,464
Jul 2007	24,206	8,630	23,076	3,524	2,949	1,504	60,881	19,167	2,807	136,961
Aug 2007	23,841	8,324	22,274	3,447	2,829	458	60,255	18,537	5,247	130,369
Sep 2007	21,594	7,643	19,111	3,080	2,523	755	53,196	16,213	3,659	115,435
Oct 2007	18,863	6,709	14,216	2,547	1,963	1,181	43,117	13,431	1,714	94,382
Nov 2007	19,919	7,234	14,463	2,667	1,964	465	45,782	13,536	980	98,806
Dec 2007	22,182	8,257	16,151	3,005	2,159	481	51,272	15,780	1,768	111,066
	AEP	APS	COMED	DAY	DLCO	WESTERN DIVERSITY	PJM WESTERN	DOM	RTO DIVERSITY	PJM RTO
Jan 2008	23,064	8,544	15,899	3,048	2,140	1,151	51,544	16,890	1,150	114,178
Feb 2008	22,435	8,261	15,423	2,963	2,079	731	50,430	16,233	1,843	110,008
Mar 2008	20,806	7,503	14,518	2,738	1,980	876	46,669	14,165	2,001	100,438
Apr 2008	19,647	7,007	14,464	2,645	2,007	1,120	44,649	13,468	2,520	94,820
May 2008	20,502	6,989	16,950	2,831	2,293	1,222	48,343	15,444	3,963	106,185
Jun 2008	23,493	8,320	21,883	3,397	2,813	858	59,049	18,190	3,671	129,734
Jul 2008	24,542	8,762	23,738	3,586	2,990	1,534	62,084	19,583	3,145	139,342
Aug 2008	24,040	8,405	22,635	3,470	2,823	463	60,910	18,799	4,819	132,304
Sep 2008	22,091	7,767	19,705	3,165	2,574	773	54,529	16,657	3,793	118,341
Oct 2008	19,054	6,752	14,578	2,582	1,976	1,198	43,744	13,605	1,596	95,848
Nov 2008	19,962	7,243	14,749	2,676	1,966	469	46,128	13,548	1,048	99,365
Dec 2008	22,245	8,314	16,378	3,001	2,150	485	51,603	15,979	1,562	112,270
	AEP	APS	COMED	DAY	DLCO	WESTERN DIVERSITY	PJM WESTERN	DOM	RTO DIVERSITY	PJM RTO
Jan 2009	23,153	8,594	16,169	3,064	2,143	1,160	51,964	17,101	934	115,484
Feb 2009	22,469	8,297	15,707	2,974	2,081	736	50,792	16,404	1,668	111,129
Mar 2009	21,053	7,566	14,956	2,780	2,017	892	47,481	14,506	2,327	102,049
Apr 2009	19,882	7,044	14,945	2,689	2,060	1,141	45,479	13,777	2,996	96,207
May 2009	20,756	7,024	17,397	2,869	2,318	1,242	49,123	15,735	4,359	107,612
Jun 2009	23,896	8,429	22,453	3,461	2,853	875	60,217	18,583	4,061	132,044
Jul 2009	24,895	8,858	24,304	3,639	3,026	1,560	63,162	19,956	3,294	141,710
Aug 2009	24,404	8,492	23,142	3,529	2,851	471	61,947	19,152	5,124	134,319
Sep 2009	22,464	7,905	20,265	3,227	2,621	790	55,692	17,045	3,583	121,206
Oct 2009	19,227	6,778	14,947	2,612	1,992	1,214	44,341	13,800	1,598	97,140
Nov 2009	20,240	7,332	15,122	2,723	1,983	477	46,922	13,891	773	101,539
Dec 2009	22,488	8,374	16,658	3,038	2,160	490	52,228	16,239	1,549	113,872

Table B-6

**MONTHLY PEAK FORECAST (MW)
FOR FE/GPU AND PLGRP**

	FE/GPU	PLGRP
Jan 2007	9,251	7,360
Feb 2007	8,926	7,128
Mar 2007	8,410	6,500
Apr 2007	7,877	6,029
May 2007	9,008	6,036
Jun 2007	11,082	6,972
Jul 2007	11,881	7,387
Aug 2007	11,175	7,116
Sep 2007	9,891	6,415
Oct 2007	8,020	5,758
Nov 2007	8,337	6,247
Dec 2007	9,292	7,075
	FE/GPU	PLGRP
Jan 2008	9,379	7,420
Feb 2008	9,045	7,163
Mar 2008	8,491	6,522
Apr 2008	7,972	6,070
May 2008	9,123	6,073
Jun 2008	11,206	7,060
Jul 2008	12,117	7,512
Aug 2008	11,318	7,192
Sep 2008	10,134	6,574
Oct 2008	8,152	5,821
Nov 2008	8,376	6,270
Dec 2008	9,358	7,127
	FE/GPU	PLGRP
Jan 2009	9,482	7,470
Feb 2009	9,145	7,223
Mar 2009	8,644	6,614
Apr 2009	8,116	6,149
May 2009	9,300	6,160
Jun 2009	11,485	7,200
Jul 2009	12,362	7,638
Aug 2009	11,549	7,316
Sep 2009	10,399	6,712
Oct 2009	8,277	5,880
Nov 2009	8,561	6,361
Dec 2009	9,523	7,222

TABLE B-7

TREATMENT OF PJM MID-ATLANTIC ACTIVE LOAD MANAGEMENT IN PLANNING (MW)
PLACED UNDER PJM COORDINATION - SUMMER

	2007	2008	2009	2010	2011	2012	2013	2014	2015	2016	2017	2018	2019	2020	2021	2022
AE																
a) CONTRACTUALLY INTERRUPTIBLE	0	0	0	0	0	0	0	0	0	0	0	0	0	0	0	0
b) DIRECT CONTROL	0	0	0	0	0	0	0	0	0	0	0	0	0	0	0	0
TOTAL	0	0	0	0	0	0	0	0	0	0	0	0	0	0	0	0
BGE																
a) CONTRACTUALLY INTERRUPTIBLE	0	0	0	0	0	0	0	0	0	0	0	0	0	0	0	0
b) DIRECT CONTROL	227	227	227	227	227	227	227	227	227	227	227	227	227	227	227	227
TOTAL	227	227	227	227	227	227	227	227	227	227	227	227	227	227	227	227
DPL																
a) CONTRACTUALLY INTERRUPTIBLE	5	5	5	5	5	5	5	5	5	5	5	5	5	5	5	5
b) DIRECT CONTROL	30	30	30	30	30	30	30	30	30	30	30	30	30	30	30	30
TOTAL	35	35	35	35	35	35	35	35	35	35	35	35	35	35	35	35
JCPL																
a) CONTRACTUALLY INTERRUPTIBLE	0	0	0	0	0	0	0	0	0	0	0	0	0	0	0	0
b) DIRECT CONTROL	55	55	55	55	55	55	55	55	55	55	55	55	55	55	55	55
TOTAL	55	55	55	55	55	55	55	55	55	55	55	55	55	55	55	55
METED																
a) CONTRACTUALLY INTERRUPTIBLE	40	40	40	40	40	40	40	40	40	40	40	40	40	40	40	40
b) DIRECT CONTROL	0	0	0	0	0	0	0	0	0	0	0	0	0	0	0	0
TOTAL	40	40	40	40	40	40	40	40	40	40	40	40	40	40	40	40
PECO																
a) CONTRACTUALLY INTERRUPTIBLE	77	77	77	77	77	77	77	77	77	77	77	77	77	77	77	77
b) DIRECT CONTROL	0	0	0	0	0	0	0	0	0	0	0	0	0	0	0	0
TOTAL	77	77	77	77	77	77	77	77	77	77	77	77	77	77	77	77
PENLC																
a) CONTRACTUALLY INTERRUPTIBLE	0	0	0	0	0	0	0	0	0	0	0	0	0	0	0	0
b) DIRECT CONTROL	0	0	0	0	0	0	0	0	0	0	0	0	0	0	0	0
TOTAL	0	0	0	0	0	0	0	0	0	0	0	0	0	0	0	0
PEPCO																
a) CONTRACTUALLY INTERRUPTIBLE	0	0	0	0	0	0	0	0	0	0	0	0	0	0	0	0
b) DIRECT CONTROL	0	0	0	0	0	0	0	0	0	0	0	0	0	0	0	0
TOTAL	0	0	0	0	0	0	0	0	0	0	0	0	0	0	0	0
PL																
a) CONTRACTUALLY INTERRUPTIBLE	240	240	240	240	240	240	240	240	240	240	240	240	240	240	240	240
b) DIRECT CONTROL	0	0	0	0	0	0	0	0	0	0	0	0	0	0	0	0
TOTAL	240	240	240	240	240	240	240	240	240	240	240	240	240	240	240	240
PS																
a) CONTRACTUALLY INTERRUPTIBLE	0	0	0	0	0	0	0	0	0	0	0	0	0	0	0	0
b) DIRECT CONTROL	120	120	120	120	120	120	120	120	120	120	120	120	120	120	120	120
TOTAL	120	120	120	120	120	120	120	120	120	120	120	120	120	120	120	120
RECO																
a) CONTRACTUALLY INTERRUPTIBLE	0	0	0	0	0	0	0	0	0	0	0	0	0	0	0	0
b) DIRECT CONTROL	0	0	0	0	0	0	0	0	0	0	0	0	0	0	0	0
TOTAL	0	0	0	0	0	0	0	0	0	0	0	0	0	0	0	0
UGI																
a) CONTRACTUALLY INTERRUPTIBLE	0	0	0	0	0	0	0	0	0	0	0	0	0	0	0	0
b) DIRECT CONTROL	0	0	0	0	0	0	0	0	0	0	0	0	0	0	0	0
TOTAL	0	0	0	0	0	0	0	0	0	0	0	0	0	0	0	0
PJM MID-ATLANTIC																
a) CONTRACTUALLY INTERRUPTIBLE	362	362	362	362	362	362	362	362	362	362	362	362	362	362	362	362
b) DIRECT CONTROL	432	432	432	432	432	432	432	432	432	432	432	432	432	432	432	432
TOTAL	794	794	794	794	794	794	794	794	794	794	794	794	794	794	794	794

Note: Forecast represents ALM credits from summer 2006, and are held constant for the forecast period

TABLE B-7

**TREATMENT OF PJM WESTERN AND PJM SOUTHERN ACTIVE LOAD MANAGEMENT IN PLANNING (MW)
PLACED UNDER PJM COORDINATION - SUMMER**

	2007	2008	2009	2010	2011	2012	2013	2014	2015	2016	2017	2018	2019	2020	2021	2022
AEP																
a) CONTRACTUALLY INTERRUPTIBLE	496	496	496	496	496	496	496	496	496	496	496	496	496	496	496	496
b) DIRECT CONTROL	0	0	0	0	0	0	0	0	0	0	0	0	0	0	0	0
TOTAL	496	496	496	496	496	496	496	496	496	496	496	496	496	496	496	496
APS																
a) CONTRACTUALLY INTERRUPTIBLE	8	8	8	8	8	8	8	8	8	8	8	8	8	8	8	8
b) DIRECT CONTROL	0	0	0	0	0	0	0	0	0	0	0	0	0	0	0	0
TOTAL	8	8	8	8	8	8	8	8	8	8	8	8	8	8	8	8
COMED																
a) CONTRACTUALLY INTERRUPTIBLE	300	300	300	300	300	300	300	300	300	300	300	300	300	300	300	300
b) DIRECT CONTROL	72	72	72	72	72	72	72	72	72	72	72	72	72	72	72	72
TOTAL	372	372	372	372	372	372	372	372	372	372	372	372	372	372	372	372
DAY																
a) CONTRACTUALLY INTERRUPTIBLE	3	3	3	3	3	3	3	3	3	3	3	3	3	3	3	3
b) DIRECT CONTROL	0	0	0	0	0	0	0	0	0	0	0	0	0	0	0	0
TOTAL	3	3	3	3	3	3	3	3	3	3	3	3	3	3	3	3
DLCO																
a) CONTRACTUALLY INTERRUPTIBLE	0	0	0	0	0	0	0	0	0	0	0	0	0	0	0	0
b) DIRECT CONTROL	0	0	0	0	0	0	0	0	0	0	0	0	0	0	0	0
TOTAL	0	0	0	0	0	0	0	0	0	0	0	0	0	0	0	0
PJM WESTERN																
a) CONTRACTUALLY INTERRUPTIBLE	807	807	807	807	807	807	807	807	807	807	807	807	807	807	807	807
b) DIRECT CONTROL	72	72	72	72	72	72	72	72	72	72	72	72	72	72	72	72
TOTAL	879	879	879	879	879	879	879	879	879	879	879	879	879	879	879	879
DOM																
a) CONTRACTUALLY INTERRUPTIBLE	0	0	0	0	0	0	0	0	0	0	0	0	0	0	0	0
b) DIRECT CONTROL	0	0	0	0	0	0	0	0	0	0	0	0	0	0	0	0
TOTAL	0	0	0	0	0	0	0	0	0	0	0	0	0	0	0	0
PJM RTO																
a) CONTRACTUALLY INTERRUPTIBLE	1,169	1,169	1,169	1,169	1,169	1,169	1,169	1,169	1,169	1,169	1,169	1,169	1,169	1,169	1,169	1,169
b) DIRECT CONTROL	504	504	504	504	504	504	504	504	504	504	504	504	504	504	504	504
TOTAL	1,673	1,673	1,673	1,673	1,673	1,673	1,673	1,673	1,673	1,673	1,673	1,673	1,673	1,673	1,673	1,673

Note: Forecast represents ALM credits from summer 2006, and are held constant for the forecast period.

Table B-8

**SUMMER COINCIDENT PEAK LOAD (MW) FOR
EACH PJM GEOGRAPHIC ZONE,
LOAD DELIVERABILITY AREA AND RTO
2007-2022**

	2007	2008	2009	2010	2011	2012	2013	2014	2015	2016	2017	2018	2019	2020	2021	2022
AE	2,678	2,733	2,795	2,862	2,932	2,990	3,048	3,106	3,164	3,229	3,290	3,348	3,408	3,462	3,524	3,591
BGE	7,062	7,162	7,274	7,389	7,482	7,565	7,645	7,716	7,787	7,854	7,940	8,022	8,121	8,212	8,296	8,385
DPL	3,950	4,026	4,106	4,189	4,280	4,357	4,435	4,515	4,595	4,687	4,771	4,858	4,951	5,046	5,148	5,253
JCPL	6,115	6,232	6,360	6,509	6,643	6,765	6,892	7,016	7,144	7,286	7,427	7,558	7,701	7,838	7,990	8,163
METED	2,751	2,798	2,853	2,905	2,958	3,001	3,043	3,088	3,138	3,186	3,233	3,277	3,329	3,382	3,436	3,492
PECO	8,288	8,396	8,530	8,662	8,789	8,904	9,020	9,137	9,275	9,417	9,552	9,677	9,807	9,942	10,089	10,236
PENLC	2,710	2,752	2,800	2,848	2,892	2,932	2,971	3,010	3,051	3,092	3,132	3,166	3,207	3,244	3,286	3,328
PEPCO	6,755	6,891	6,995	7,098	7,195	7,291	7,399	7,513	7,609	7,686	7,784	7,879	7,992	8,109	8,207	8,311
PL	6,953	7,060	7,174	7,293	7,410	7,519	7,625	7,727	7,832	7,946	8,064	8,170	8,295	8,410	8,533	8,672
PS	10,451	10,596	10,763	10,938	11,108	11,275	11,424	11,579	11,740	11,902	12,075	12,224	12,396	12,563	12,751	12,942
RECO	409	413	416	419	422	424	427	430	432	435	438	439	444	447	451	454
UGI	188	191	194	197	199	202	204	207	210	213	216	218	222	225	228	231
AEP	23,332	23,599	23,908	24,241	24,563	24,906	25,178	25,457	25,724	26,019	26,330	26,641	26,945	27,207	27,511	27,779
APS	8,338	8,450	8,535	8,619	8,693	8,768	8,842	8,909	8,977	9,033	9,123	9,197	9,270	9,352	9,429	9,507
COMED	22,220	22,841	23,377	23,823	24,284	24,742	25,223	25,734	26,207	26,579	27,030	27,437	27,855	28,281	28,661	29,086
DAY	3,374	3,424	3,472	3,522	3,569	3,620	3,664	3,708	3,755	3,800	3,849	3,892	3,946	3,992	4,040	4,091
DLCO	2,837	2,870	2,906	2,937	2,968	3,001	3,032	3,065	3,097	3,126	3,162	3,197	3,236	3,274	3,311	3,344
DOM	18,550	18,908	19,252	19,631	20,017	20,425	20,794	21,164	21,553	21,960	22,406	22,824	23,230	23,630	24,009	24,430
PJM RTO	136,961	139,342	141,710	144,082	146,404	148,687	150,866	153,081	155,290	157,450	159,822	162,024	164,355	166,616	168,900	171,295
Eastern MAAC	31,891	32,396	32,970	33,579	34,174	34,715	35,246	35,783	36,350	36,956	37,553	38,104	38,706	39,298	39,954	40,640
Southwest MAAC	13,816	14,053	14,269	14,487	14,677	14,856	15,043	15,229	15,396	15,540	15,724	15,901	16,113	16,322	16,503	16,696
MAAC and APS	66,649	67,701	68,795	69,927	71,003	71,992	72,975	73,952	74,953	75,966	77,044	78,033	79,142	80,233	81,368	82,565

Note: Forecasts presented here will be used for Reliability Pricing Model.

TABLE C-1

**PJM LOAD DELIVERABILITY AREAS
CENTRAL MID-ATLANTIC: BGE, METED, PEPCO, PL AND UGI 50/50 SEASONAL PEAKS - MW**

YEAR	SPRING (WK 14-19)	SUMMER (WK 20-39)	FALL (WK 40-45)	WINTER (WK 46-13)
2007	17,215	24,299	16,920	21,159
2008	17,392	24,751	17,123	21,364
2009	17,646	25,167	17,313	21,542
2010	17,944	25,542	17,473	21,787
2011	18,047	25,900	17,702	22,053
2012	18,271	26,171	18,141	22,277
2013	18,492	26,541	18,305	22,449
2014	18,679	26,878	18,482	22,573
2015	18,851	27,229	18,636	22,769
2016	19,051	27,536	18,693	22,999
2017	19,208	27,882	19,065	23,243
2018	19,498	28,187	19,440	23,431
2019	19,756	28,559	19,643	23,636
2020	19,944	28,979	19,772	23,799
2021	20,279	29,333	19,897	24,048
2022	20,397	29,723	20,117	24,293

TABLE C-2

**PJM LOAD DELIVERABILITY AREAS
WESTERN MID-ATLANTIC: METED, PENLC, PL AND UGI 50/50 SEASONAL PEAKS - MW**

YEAR	SPRING (WK 14-19)	SUMMER (WK 20-39)	FALL (WK 40-45)	WINTER (WK 46-13)
2007	10,585	12,987	10,267	12,667
2008	10,666	13,215	10,378	12,795
2009	10,820	13,448	10,494	12,895
2010	10,980	13,662	10,605	13,049
2011	11,096	13,877	10,794	13,216
2012	11,290	14,042	11,000	13,363
2013	11,424	14,244	11,112	13,479
2014	11,527	14,438	11,229	13,553
2015	11,631	14,649	11,327	13,687
2016	11,789	14,853	11,424	13,834
2017	11,916	15,060	11,609	13,993
2018	12,115	15,233	11,813	14,122
2019	12,258	15,447	11,958	14,253
2020	12,346	15,675	12,038	14,347
2021	12,534	15,896	12,136	14,508
2022	12,670	16,136	12,320	14,675

TABLE C-3

**PJM LOAD DELIVERABILITY AREAS
EASTERN MID-ATLANTIC: AE, DPL, JCPL, PECO, PS AND RECO 50/50 SEASONAL PEAKS - MW**

YEAR	SPRING (WK 14-19)	SUMMER (WK 20-39)	FALL (WK 40-45)	WINTER (WK 46-13)
2007	19,357	32,781	20,344	22,730
2008	19,654	33,383	20,674	23,017
2009	20,088	33,987	20,960	23,276
2010	20,382	34,579	21,201	23,599
2011	20,580	35,173	21,510	23,954
2012	20,866	35,624	22,254	24,264
2013	21,225	36,201	22,603	24,546
2014	21,575	36,760	22,950	24,792
2015	21,970	37,353	23,267	25,109
2016	22,203	37,956	23,369	25,432
2017	22,440	38,533	23,951	25,781
2018	22,842	39,052	24,544	26,102
2019	23,177	39,639	24,933	26,408
2020	23,659	40,281	25,228	26,688
2021	24,075	40,938	25,504	27,056
2022	24,315	41,639	25,841	27,439

TABLE C-4

**PJM LOAD DELIVERABILITY AREAS
SOUTHERN MID-ATLANTIC: BGE AND PEPSCO 50/50 SEASONAL PEAKS - MW**

YEAR	SPRING (WK 14-19)	SUMMER (WK 20-39)	FALL (WK 40-45)	WINTER (WK 46-13)
2007	9,323	14,216	9,367	11,368
2008	9,443	14,491	9,477	11,481
2009	9,589	14,725	9,584	11,585
2010	9,763	14,934	9,660	11,716
2011	9,786	15,122	9,755	11,862
2012	9,862	15,260	10,045	11,982
2013	9,980	15,472	10,129	12,070
2014	10,096	15,656	10,217	12,138
2015	10,198	15,841	10,301	12,236
2016	10,278	15,986	10,289	12,355
2017	10,339	16,163	10,523	12,481
2018	10,467	16,328	10,743	12,574
2019	10,615	16,526	10,839	12,681
2020	10,743	16,763	10,902	12,769
2021	10,935	16,939	10,956	12,894
2022	10,951	17,131	11,034	13,016

TABLE C-5

**PJM LOAD DELIVERABILITY AREAS
MID-ATLANTIC and APS: AE, APS, BGE, DPL, JCPL, METED, PECO, PENLC, PEPSCO, PL, PS, RECO, and UGI
50/50 SEASONAL PEAKS - MW**

YEAR	SPRING (WK 14-19)	SUMMER (WK 20-39)	FALL (WK 40-45)	WINTER (WK 46-13)
2007	45,200	68,068	45,839	54,681
2008	45,696	69,294	46,423	55,247
2009	46,449	70,453	46,946	55,755
2010	47,108	71,538	47,409	56,424
2011	47,481	72,601	48,061	57,169
2012	48,087	73,413	49,337	57,791
2013	48,750	74,460	49,930	58,324
2014	49,324	75,461	50,493	58,749
2015	49,929	76,517	51,009	59,340
2016	50,443	77,521	51,223	59,979
2017	50,898	78,549	52,263	60,684
2018	51,668	79,467	53,333	61,272
2019	52,335	80,527	54,025	61,861
2020	53,034	81,726	54,455	62,371
2021	53,866	82,851	54,901	63,085
2022	54,295	84,044	55,549	63,822

Table D-1

**SUMMER 90/10 PEAK LOAD (MW) FOR
EACH PJM MID-ATLANTIC GEOGRAPHIC ZONE AND SUM OF GEOGRAPHIC ZONES
2007-2022**

	2007	2008	2009	2010	2011	2012	2013	2014	2015	2016	2017	2018	2019	2020	2021	2022
AE	2,897	2,967	3,037	3,102	3,167	3,227	3,292	3,362	3,428	3,485	3,544	3,609	3,674	3,740	3,807	3,873
BGE	7,552	7,678	7,792	7,915	8,010	8,095	8,166	8,246	8,321	8,403	8,491	8,592	8,672	8,769	8,874	8,968
DPL	4,304	4,415	4,508	4,587	4,674	4,747	4,845	4,954	5,048	5,139	5,236	5,310	5,435	5,557	5,674	5,792
JCPL	6,653	6,817	6,936	7,077	7,218	7,345	7,476	7,685	7,800	7,942	8,101	8,237	8,407	8,581	8,757	8,910
METED	2,958	3,024	3,079	3,134	3,189	3,225	3,281	3,329	3,378	3,430	3,481	3,522	3,580	3,636	3,696	3,756
PECO	9,030	9,199	9,345	9,477	9,602	9,700	9,853	9,989	10,128	10,263	10,402	10,510	10,668	10,818	10,973	11,135
PENLC	2,916	2,960	3,008	3,053	3,096	3,138	3,173	3,218	3,262	3,300	3,334	3,375	3,410	3,458	3,500	3,542
PEPCO	7,351	7,473	7,593	7,712	7,828	7,929	8,040	8,152	8,265	8,367	8,478	8,574	8,693	8,805	8,921	9,038
PL	7,451	7,576	7,704	7,826	7,938	8,041	8,155	8,272	8,400	8,505	8,616	8,731	8,861	9,007	9,141	9,267
PS	11,197	11,407	11,591	11,774	11,952	12,060	12,245	12,446	12,624	12,804	12,984	13,102	13,310	13,515	13,717	13,925
RECO	445	453	456	460	463	460	467	471	475	478	481	478	485	490	494	497
UGI	203	206	208	211	214	216	219	222	225	227	230	233	237	240	243	246
DIVERSITY (-)	599	603	613	623	633	644	650	661	671	680	690	698	709	720	731	742
PJM MID-ATLANTIC	62,359	63,571	64,644	65,704	66,719	67,539	68,559	69,688	70,682	71,662	72,688	73,576	74,721	75,896	77,065	78,208
FE/GPU	12,386	12,664	12,884	13,122	13,359	13,558	13,780	14,081	14,286	14,515	14,757	14,973	15,233	15,508	15,784	16,036
PLGRP	7,650	7,778	7,908	8,033	8,148	8,254	8,369	8,490	8,620	8,728	8,842	8,960	9,093	9,242	9,379	9,508

Table D-1
SUMMER 90/10 PEAK LOAD (MW) FOR
EACH PJM WESTERN AND PJM SOUTHERN GEOGRAPHIC ZONE AND SUM OF GEOGRAPHIC ZONES
2007-2022

	2007	2008	2009	2010	2011	2012	2013	2014	2015	2016	2017	2018	2019	2020	2021	2022
AEP	24,927	25,245	25,609	25,967	26,335	26,704	27,021	27,315	27,658	28,012	28,392	28,734	29,034	29,362	29,706	30,080
APS	8,950	9,014	9,105	9,194	9,280	9,352	9,425	9,495	9,569	9,640	9,720	9,798	9,877	9,970	10,059	10,150
COMED	24,592	25,111	25,678	26,247	26,810	27,321	27,770	28,249	28,757	29,256	29,704	30,149	30,490	30,912	31,361	31,852
DAY	3,655	3,708	3,763	3,816	3,868	3,921	3,963	4,014	4,068	4,122	4,174	4,224	4,268	4,326	4,381	4,443
DLCO	3,123	3,155	3,193	3,228	3,263	3,299	3,325	3,358	3,395	3,432	3,469	3,512	3,541	3,581	3,623	3,665
DIVERSITY (-)	1,573	1,597	1,623	1,641	1,552	1,702	1,724	1,746	1,771	1,604	1,819	1,842	1,861	1,884	1,908	1,723
PJM WESTERN	63,675	64,637	65,724	66,811	68,005	68,896	69,780	70,685	71,676	72,857	73,640	74,575	75,348	76,266	77,223	78,468
DOM	19,609	19,988	20,371	20,786	21,192	21,621	21,996	22,407	22,822	23,273	23,733	24,202	24,594	25,018	25,454	25,915
DIVERSITY (-)	868	683	761	798	919	900	621	725	767	1,036	820	973	643	669	746	1,049
PJM RTO	144,774	147,513	149,978	152,503	154,996	157,156	159,714	162,055	164,414	166,757	169,241	171,380	174,020	176,512	178,996	181,542
	5.7%	5.9%	5.8%	5.8%	5.9%	5.7%	5.9%	5.9%	5.9%	5.9%	5.9% #####	#DIV/0!	#DIV/0!	#DIV/0!	#DIV/0!	#DIV/0!

Table D-2

**WINTER 90/10 PEAK LOAD (MW) FOR
EACH PJM MID-ATLANTIC GEOGRAPHIC ZONE AND SUM OF GEOGRAPHIC ZONES
2006/07- 2021/22**

	06/07	07/08	08/09	09/10	10/11	11/12	12/13	13/14	14/15	15/16	16/17	17/18	18/19	19/20	20/21	21/22
AE	1,891	1,916	1,933	1,954	1,985	2,017	2,040	2,047	2,080	2,100	2,134	2,154	2,189	2,196	2,220	2,252
BGE	6,320	6,372	6,412	6,466	6,519	6,563	6,616	6,607	6,663	6,695	6,740	6,786	6,840	6,861	6,893	6,953
DPL	3,578	3,622	3,669	3,718	3,784	3,838	3,877	3,904	3,975	4,021	4,096	4,141	4,196	4,244	4,304	4,389
JCPL	4,115	4,174	4,219	4,284	4,355	4,425	4,495	4,503	4,604	4,658	4,746	4,804	4,888	4,922	4,991	5,082
METED	2,649	2,677	2,711	2,737	2,784	2,824	2,852	2,869	2,911	2,930	2,981	3,013	3,046	3,077	3,099	3,154
PECO	6,785	6,861	6,894	7,002	7,089	7,179	7,240	7,238	7,354	7,448	7,560	7,629	7,702	7,736	7,837	7,952
PENLC	2,879	2,923	2,945	2,982	3,029	3,073	3,102	3,112	3,156	3,186	3,232	3,256	3,301	3,312	3,342	3,388
PEPCO	5,654	5,736	5,800	5,870	5,949	6,026	6,093	6,124	6,211	6,270	6,353	6,414	6,494	6,539	6,594	6,689
PL	7,542	7,584	7,639	7,710	7,786	7,855	7,893	7,898	8,003	8,060	8,144	8,195	8,255	8,298	8,369	8,458
PS	7,232	7,327	7,393	7,489	7,594	7,692	7,799	7,804	7,942	8,026	8,140	8,225	8,357	8,382	8,489	8,622
RECO	239	240	242	243	244	246	247	248	250	251	252	253	255	256	257	259
UGI	209	211	212	214	217	219	220	221	223	225	228	230	232	233	235	238
DIVERSITY (-)	732	768	747	763	812	846	852	791	826	847	922	884	960	877	916	972
PJM MID-ATLANTIC	48,361	48,875	49,321	49,908	50,524	51,111	51,623	51,784	52,547	53,023	53,685	54,215	54,795	55,179	55,714	56,463
FE/GPU	9,578	9,688	9,808	9,931	10,081	10,227	10,342	10,413	10,590	10,679	10,839	10,957	11,098	11,218	11,313	11,485
PLGRP	7,747	7,791	7,847	7,920	7,998	8,070	8,108	8,114	8,222	8,280	8,367	8,420	8,482	8,526	8,599	8,691

Table D-2

**WINTER 90/10 PEAK LOAD (MW) FOR
EACH PJM WESTERN AND PJM SOUTHERN GEOGRAPHIC ZONE AND SUM OF GEOGRAPHIC ZONES
2006/07- 2021/22**

	06/07	07/08	08/09	09/10	10/11	11/12	12/13	13/14	14/15	15/16	16/17	17/18	18/19	19/20	20/21	21/22
AEP	24,354	24,558	24,743	24,862	25,029	25,208	25,387	25,439	25,688	25,787	25,968	26,116	26,306	26,424	26,532	26,744
APS	9,041	9,116	9,177	9,249	9,322	9,389	9,456	9,400	9,561	9,605	9,677	9,744	9,812	9,843	9,918	10,002
COMED	16,413	16,728	16,891	17,157	17,461	17,779	18,070	18,164	18,452	18,683	19,024	19,250	19,577	19,658	19,827	20,139
DAY	3,225	3,253	3,265	3,292	3,329	3,359	3,385	3,380	3,425	3,448	3,489	3,514	3,546	3,551	3,574	3,615
DLCO	2,218	2,233	2,230	2,232	2,244	2,257	2,272	2,259	2,274	2,273	2,295	2,303	2,325	2,315	2,319	2,338
DIVERSITY (-)	1,340	1,427	1,305	1,315	1,438	1,548	1,623	1,521	1,542	1,556	1,716	1,727	1,832	1,711	1,726	1,798
PJM WESTERN	53,911	54,461	55,001	55,476	55,947	56,444	56,947	57,121	57,859	58,240	58,737	59,200	59,734	60,080	60,444	61,041
DOM	17,814	18,094	18,282	18,527	18,809	19,080	19,359	19,491	19,823	20,074	20,397	20,661	20,972	21,191	21,416	21,739
DIVERSITY (-)	315	527	323	308	279	331	513	69	358	191	296	306	572	594	68	341
PJM RTO	119,771	120,903	122,281	123,603	125,001	126,305	127,416	128,326	129,870	131,146	132,523	133,769	134,929	135,857	137,505	138,902

TABLE E-1**PJM RTO HISTORICAL PEAKS
(MW)****SUMMER**

YEAR	NORMALIZED BASE	NORMALIZED COOLING	NORMALIZED TOTAL	UNRESTRICTED PEAK	PEAK DATE/TIME
1998	72,950	38,170	111,120	114,996	07/21/1998 17:00
1999	73,990	42,980	116,970	121,655	07/06/1999 17:00
2000	76,300	40,080	116,380	114,178	08/09/2000 17:00
2001	75,990	45,080	121,070	131,116	08/09/2001 16:00
2002	77,140	48,120	125,260	130,360	08/01/2002 17:00
2003	77,650	46,700	124,350	126,332	08/21/2003 17:00
2004	79,670	43,810	123,480	120,235	06/09/2004 17:00
2005	79,000	53,270	132,270	134,219	07/26/2005 16:00
2006	79,270	56,930	136,200	145,951	08/02/2006 17:00

WINTER

YEAR	NORMALIZED BASE	NORMALIZED HEATING	NORMALIZED TOTAL	UNRESTRICTED PEAK	PEAK DATE/TIME
97/98				88,970	01/14/1998 19:00
98/99				99,982	01/05/1999 19:00
99/00				102,359	01/27/2000 20:00
00/01				101,717	12/20/2000 19:00
01/02				97,294	01/03/2002 19:00
02/03				112,755	01/23/2003 19:00
03/04				106,760	01/26/2004 19:00
04/05				114,061	12/20/2004 19:00
05/06				110,415	12/14/2005 19:00

Note: Normalized values calculated by PJM staff using the bottom-up coincident peak weather-normalization methodology.

TABLE E-2

**PJM RTO HISTORICAL NET ENERGY
(GWH)**

YEAR	ENERGY	GROWTH RATE
1993	596,076	-
1994	597,975	0.3%
1995	618,984	3.5%
1996	613,127	-0.9%
1997	615,421	0.4%
1998	620,061	0.8%
1999	636,404	2.6%
2000	651,190	2.3%
2001	651,319	0.0%
2002	673,526	3.4%
2003	674,471	0.1%
2004	689,008	2.2%
2005	682,441	-1.0%

Note: All historic net energy values represent the PJM RTO footprint at the time of publishing.