



Net Energy Injections at Load Busses Quarterly Report

Market Implementation Committee

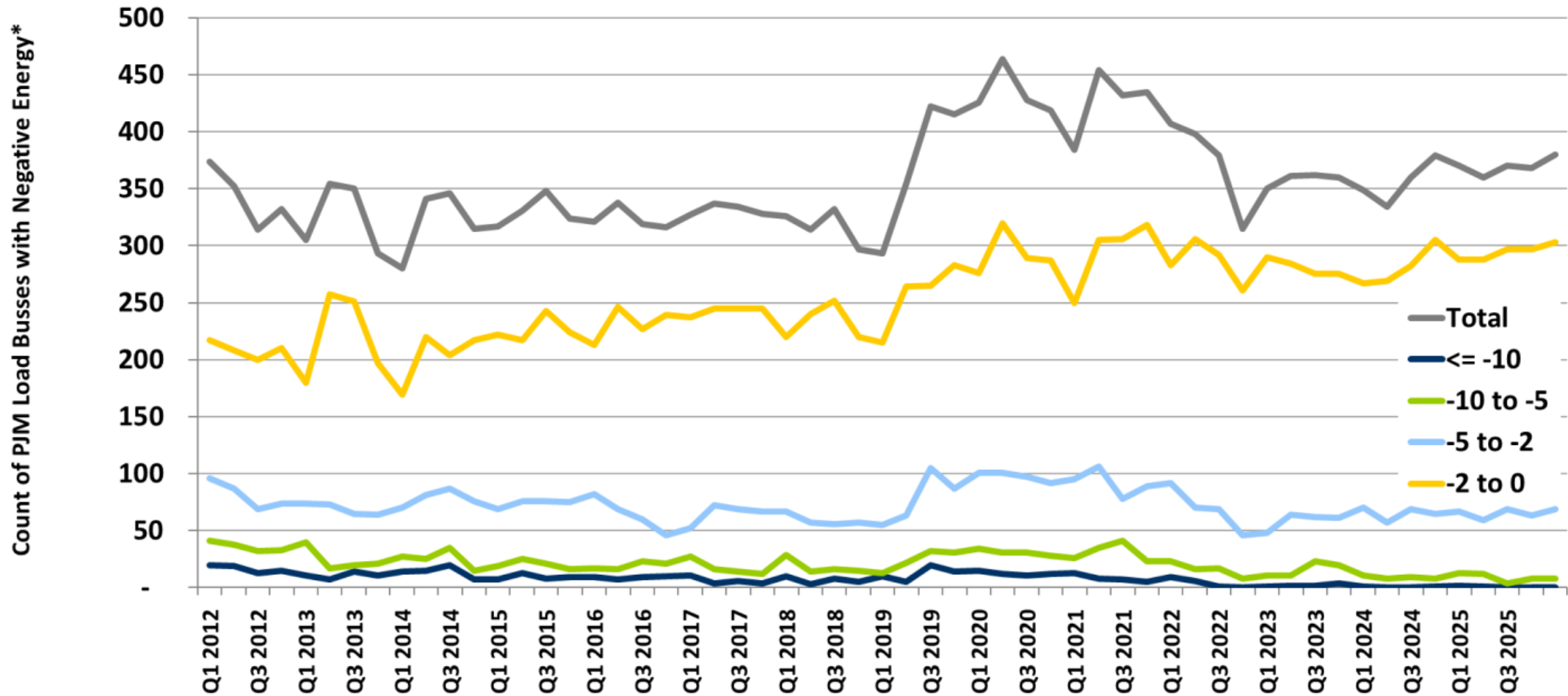
May 6, 2026

- Follow up effort to the Net Energy Metering Senior Task Force (NEMSTF) recommendation
 - PJM will implement a quarterly review to track and trend overall incidents of net energy injections at load busses
- PJM Manual 28 Requirement
 - PJM will assess and trend quarterly the degree of net energy injections at load busses modeled in the PJM network system model (i.e., reverse power flows) in order to detect and correct any modeling issues and to identify any generation in excess of load that appears at a load bus.
- PJM continues to track this data to improve its EMS Network Model. To date, trends have not been indicative of an underlying Net Energy Metering issue.



PJM Load Buses with Negative Energy on Average

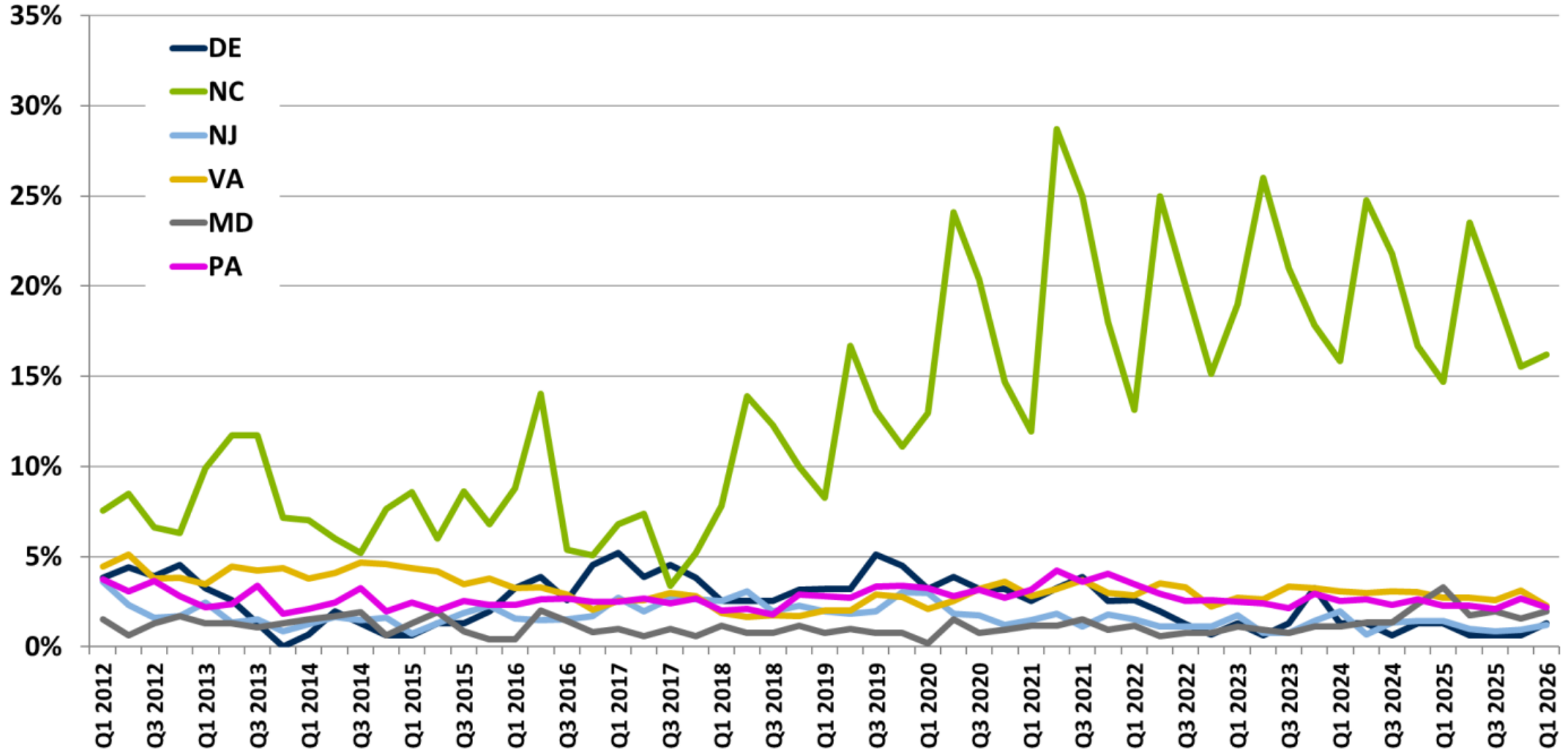
PJM Load Buses with Negative Energy on Average



* The total number of PJM load buses is 11,686 as of the most recent model build.

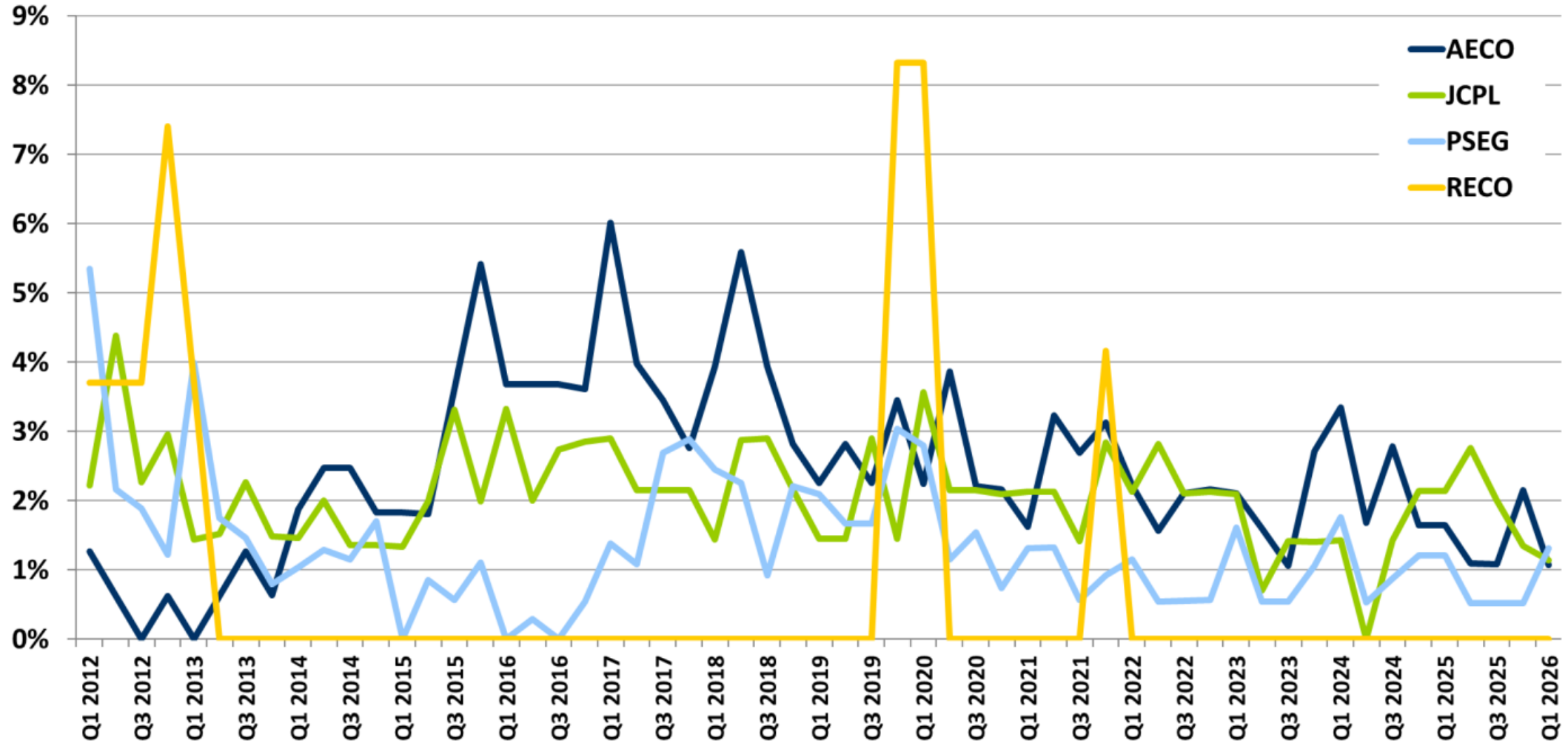
Mid-Atlantic State Load Busses with Negative Energy on Average

Percent of PJM Load Busses in MAD States with Negative Energy on Average



New Jersey Load Buses with Negative Energy on Average

Percent of PJM Load Buses in New Jersey with Negative Energy on Average



Facilitator:
Foluso Afelumo,
Jason.Shoemaker@pjm.com

Secretary:
Stefan Starkov,
Stefan.Starkov@pjm.com

SME/Presenter:
Jennifer Warner-Freeman,
Jennifer.Freeman@pjm.com



Member Hotline

(610) 666 – 8980

(866) 400 – 8980

custsvc@pjm.com

Net Energy Injections at Load Busses

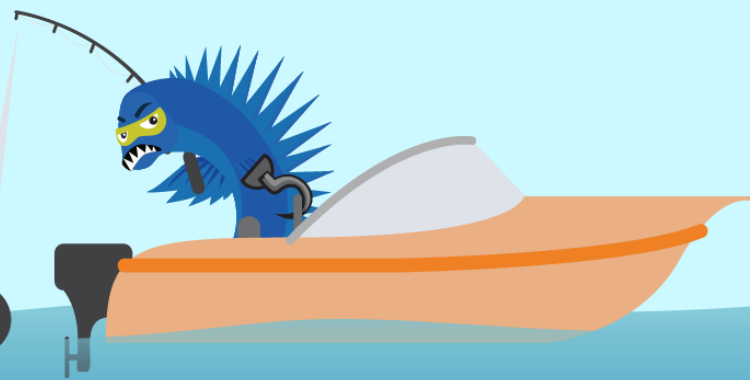
Acronym	Term & Definition
NEMSTF	Net Energy Metering Senior Task Force. Closed in 2012, the NEMSTF under the auspices of the PJM Markets and Reliability Committee, was created to work with the appropriate PJM personnel and other stakeholders to recommend necessary modifications to tariffs, PJM manuals, and PJM business rules as well as support the scoping and conceptual design of the potential changes to settlements systems and the generator interconnection process.

**PROTECT THE
POWER GRID**

**THINK BEFORE
YOU CLICK!**



**BE ALERT TO
MALICIOUS PHISHING
EMAILS**



**Report suspicious email activity to PJM.
Call (610) 666-2244 or email it_ops_ctr_shift@pjm.com**