

Data Management Subcommittee (DMS) conversion to Modeling Users Forum

Jeff Schmitt, Sr. Manager, Power
Systems Modeling

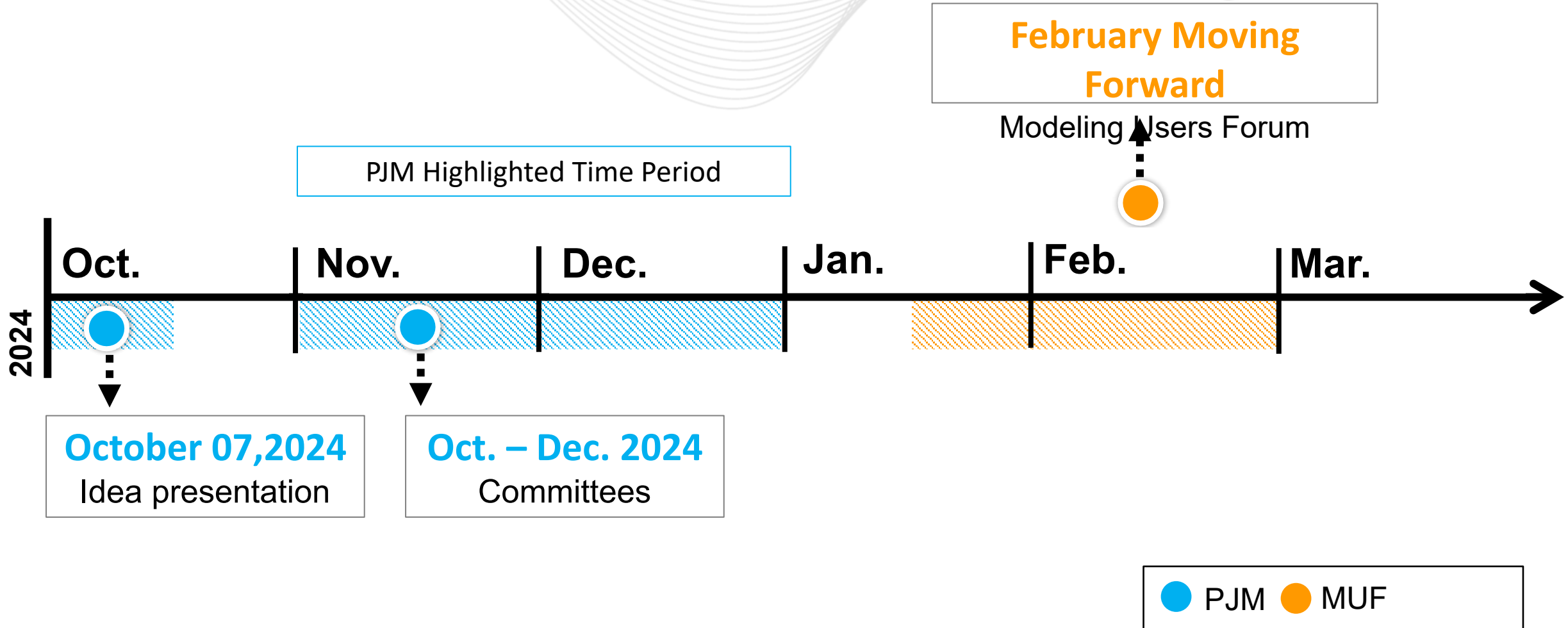
Markets and Reliability Committee

December 18, 2024

- The DMS Charter is due for a periodic review and provided an opportunity to consider the current configuration.
- Enhancements identified include:
 - Conversion from a Subcommittee to a Forum,
 - Strategically place the Forum in line with the group's longer term goals and initiatives, and
 - Promote Member engagement and Forum participation.
- Committee approval required

- DMS was typically a group that met around 4x a year (1x in person) pre-COVID
- During that timeframe of 2020-2023 DMS took a pretty significant reduction in attendance, as did many groups
- Even varying content and trying to revamp topics, attendance did not improve significantly
- Seeking to restructure as a Forum with more frequent meetings and an enhanced focus on modeling and using modeling tools

- Modeling Users Forum
- Meeting more often (targeting monthly)
- Transition will depend on how we modify DMS to Forum with current DMS roster
- CEII data
- Confidential closed roster group
- Target to have transitioned to begin 2025



1	2	3
<ul style="list-style-type: none"> Periodic review of DMS Charter identified opportunities for enhancement. 	<ul style="list-style-type: none"> Restructuring the Charter and conversion to a Forum aligns with longer term goals and initiatives. 	<ul style="list-style-type: none"> Targeting February 2025 to kick-off the rebranded Modeling Users Forum (MUF).

Facilitator:
Jeff Schmitt,
Jeffrey.Schmitt@pjm.com

Secretary:
Suzie Fahr, Suzie.Fahr@pjm.com

**Data Management Subcommittee
(DMS) conversion to Modeling Users
Forum**



Member Hotline

(610) 666 – 8980

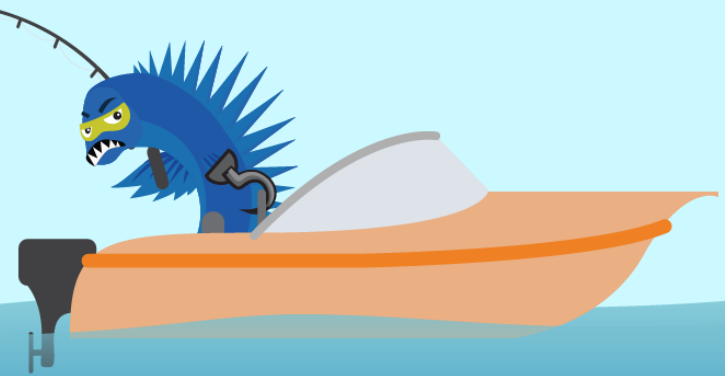
(866) 400 – 8980

custsvc@pjm.com

**PROTECT THE
POWER GRID**
**THINK BEFORE
YOU CLICK!**



**BE ALERT TO
MALICIOUS PHISHING
EMAILS**



Report suspicious email activity to PJM.
Call (610) 666-2244 or email it_ops_ctr_shift@pjm.com