

# Manual 14-D: Generation Operational Requirements (Generation Operational Testing)

Ray Lee

Lead Engineer, Generation, PJM

Markets & Reliability Committee

February 20, 2025

- Conforming changes to align with Generation Operational Test language in OATT Attachment DD due to CIFP-RA filing ER24-99
- Purpose of testing is to better ensure resources are capable of operating when needed for reliability
- New Section 7.6 Generation Operational Testing
- Generation Operation Tests can begin starting June 1, 2025

- All Generation Capacity Resources committed in RPM or a FRR Plan are subject to testing except variable resources
- PJM can initiate up to two operational tests per season for relevant Delivery Year
  - Summer (May-October)
  - Winter (November-April)

- Considerations for resource selection
  - Time since last operation
  - Operational issues (frequent outages or derates)
  - Failures to start or operate within resource schedule parameters
- PJM will select a schedule for testing based on the available schedule(s) in Markets Gateway
- No requirement for PJM to test all resources in a season or Delivery Year

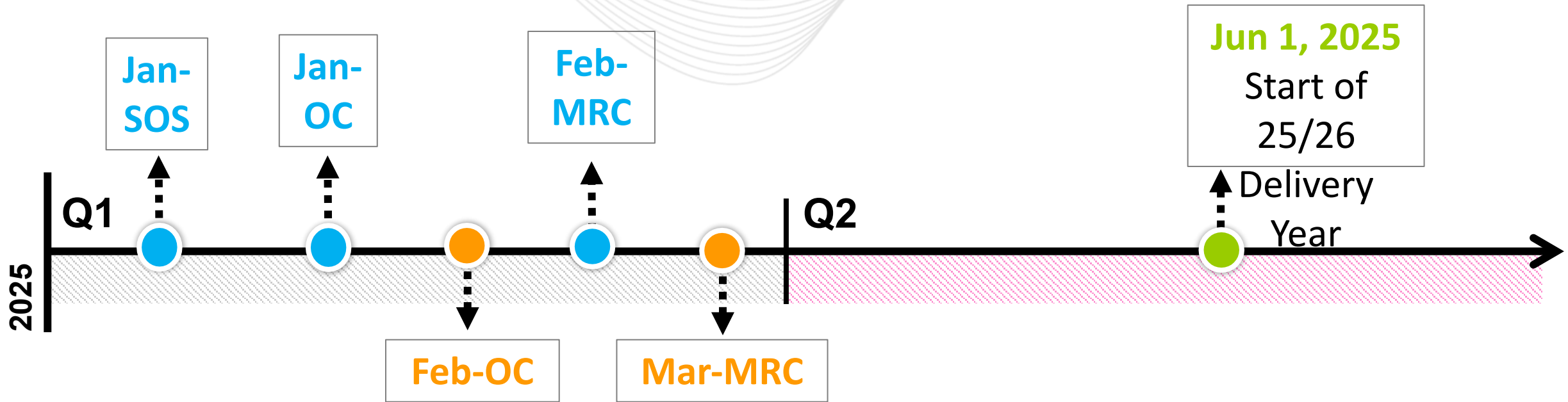
- PJM will inform a resource that a Generation Operational Test is being initiated in real-time via phone call without advance notice
- PJM will communicate the schedule the resource will be tested on
- Resources undergoing **initial** Generation Operational Tests will be eligible for make whole (in accordance with OATT, Attachment K-Appendix, section 3.2.3(e)), reserves, and to set LMP

- Time to Start (Notification Time + Applicable Start-Up Time) and Minimum Run Time parameters for the selected schedule will be used for evaluation purposes
- Resource must meet all criteria below for a successful test
  1. Time from resource commitment to unit breaker close  $\leq$  [(Notification Time + Start Up Time) + greater of (10 min or  $0.1 \times (\text{Notification Time} + \text{Start Up Time})$ )]
  2. Resource must operate for at least the Minimum Run Time
- **No penalty for failure of an initial test**

- Resources that fail an initial Generation Operational Test may be re-tested within the same season
- Re-tests are considered to be part of the same initial operational test and do **NOT** count as a second test for the relevant season
- Re-tests will **NOT** be eligible for make whole, but will be eligible for reserves and to set LMP

- A Resource that fails a re-test and does **NOT** start and synchronize to the grid during the same day of the re-test shall be assessed a daily Generation Capacity Resource Operational Test Failure Charge
- Charge shall be assessed on the date of the failed re-test and end on the date the resource successfully starts and synchronizes to the grid. Resource is **NOT** required to meet the test evaluation criteria to stop the charge.
- Generation Capacity Resource Operational Test Failure Charge details in PJM Manual M-18 Sections 8 and 9





Chair:

Lisa Drauschak

[Lisa.Drauschak@pjm.com](mailto:Lisa.Drauschak@pjm.com)

Secretary:

Dave Anders

[David.Anders@pjm.com](mailto:David.Anders@pjm.com)

SME/Presenter:

Ray Lee,

[Ray.Lee@pjm.com](mailto:Ray.Lee@pjm.com)



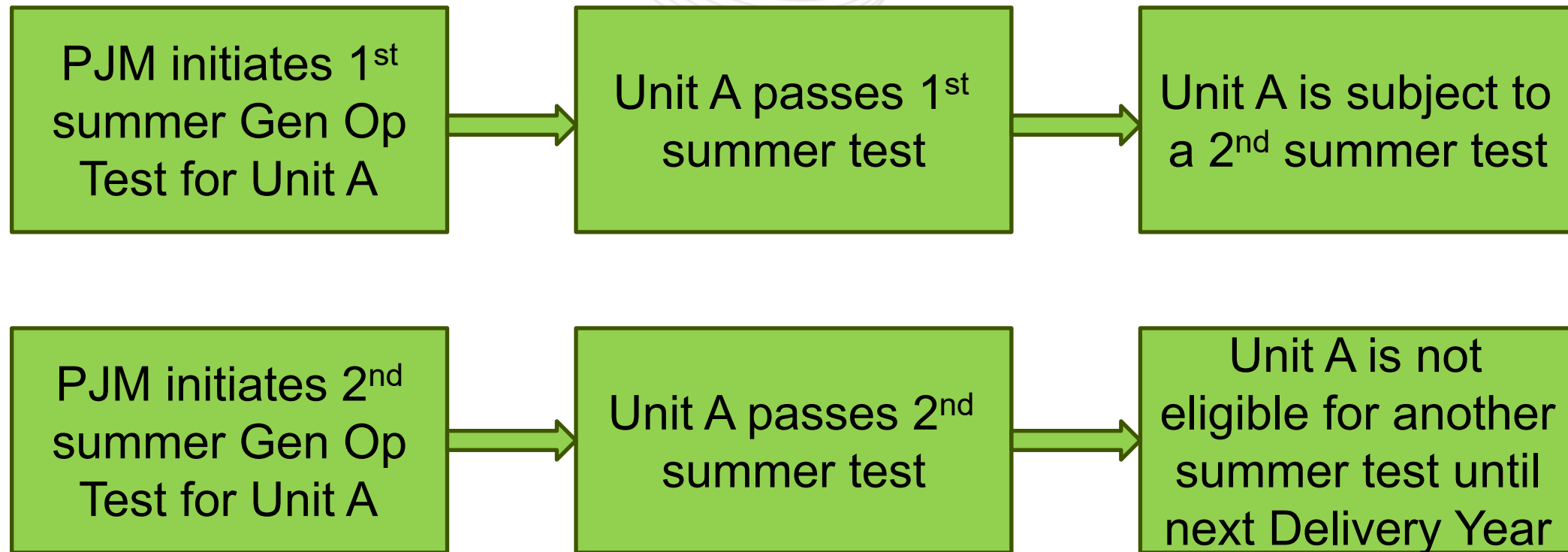
Member Hotline

(610) 666 – 8980

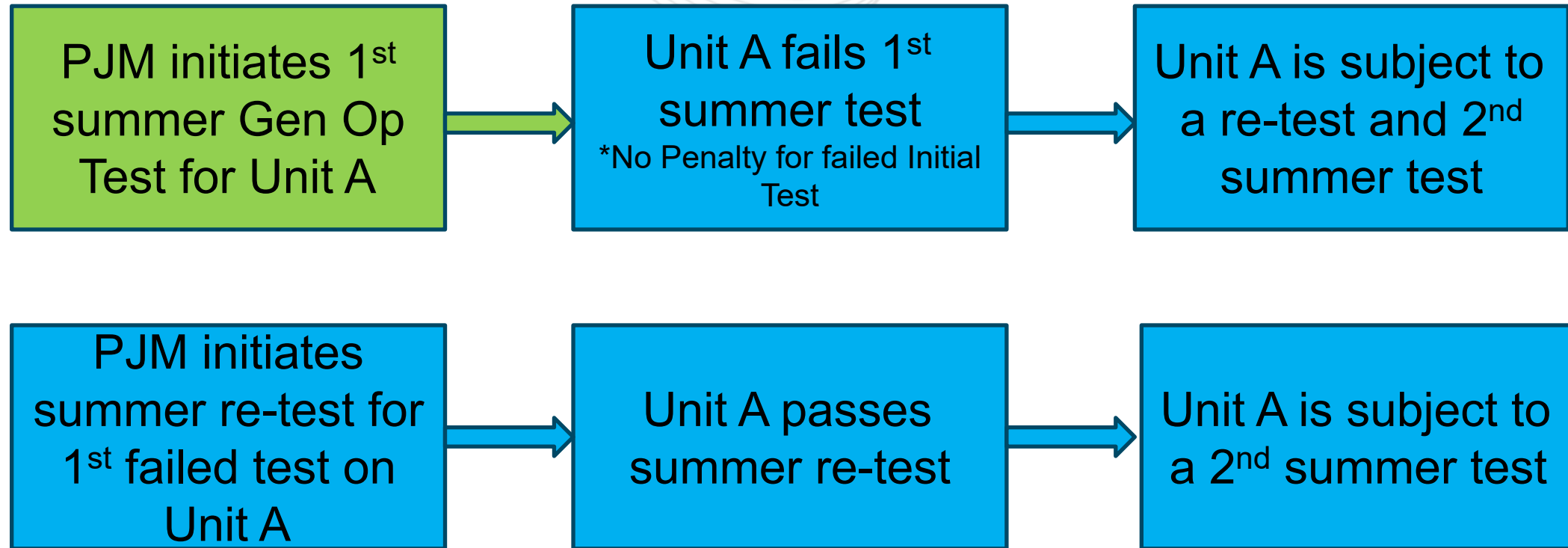
(866) 400 – 8980

[custsvc@pjm.com](mailto:custsvc@pjm.com)

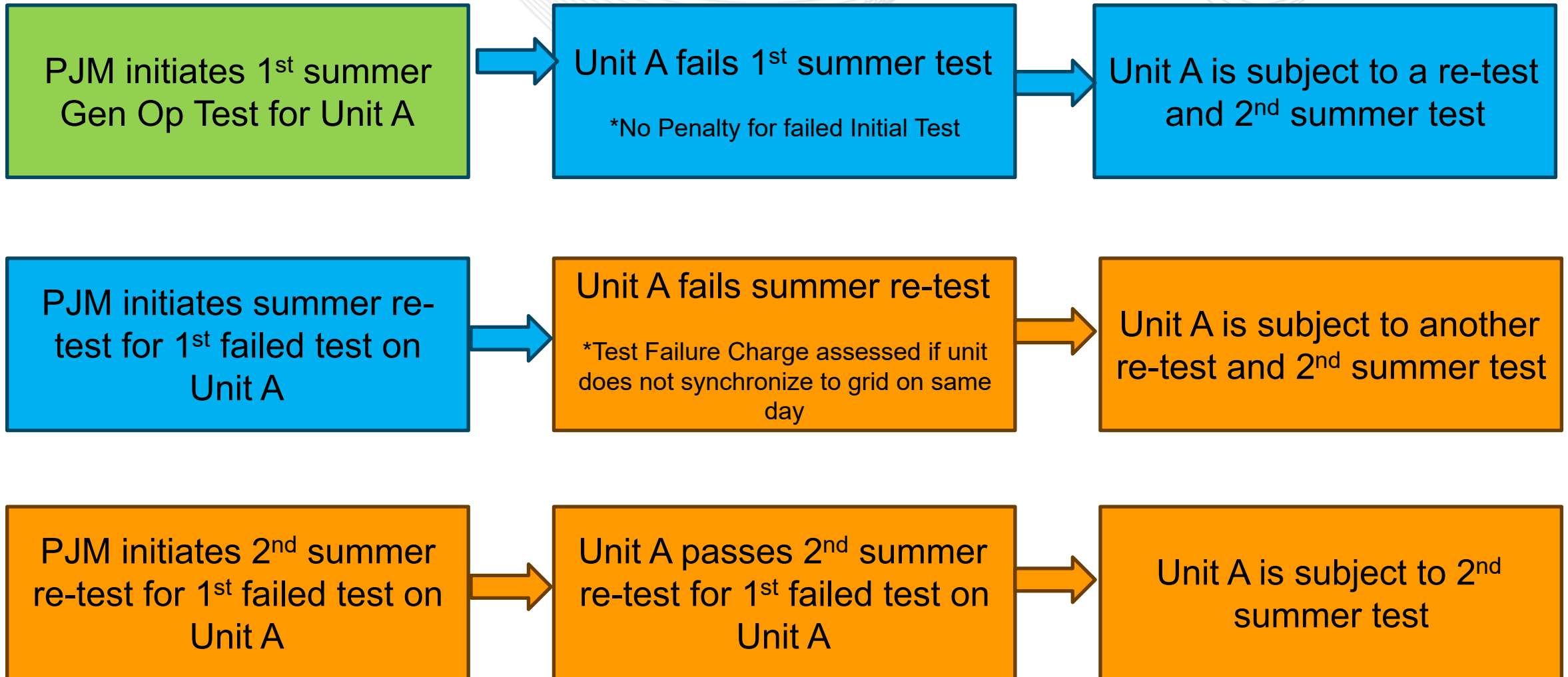




## Example 2 – Failed Initial Test & Successful Re-test



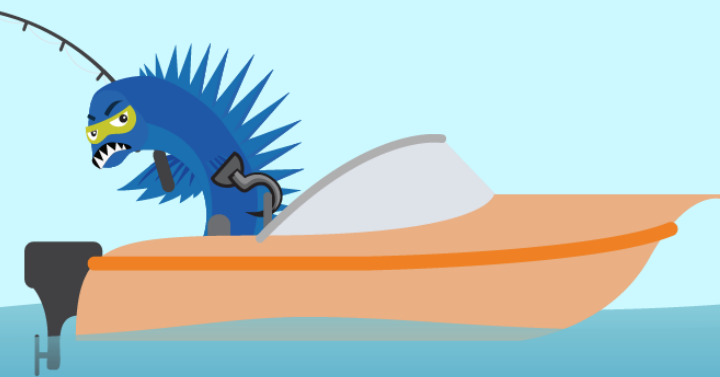
## Example 3 – Failed Initial Test & Re-test



**PROTECT THE  
POWER GRID**  
**THINK BEFORE  
YOU CLICK!**



**BE ALERT TO  
MALICIOUS PHISHING  
EMAILS**



**Report suspicious email activity to PJM.**  
Call (610) 666-2244 or email [it\\_ops\\_ctr\\_shift@pjm.com](mailto:it_ops_ctr_shift@pjm.com)