

Manual 37: Reliability Coordination

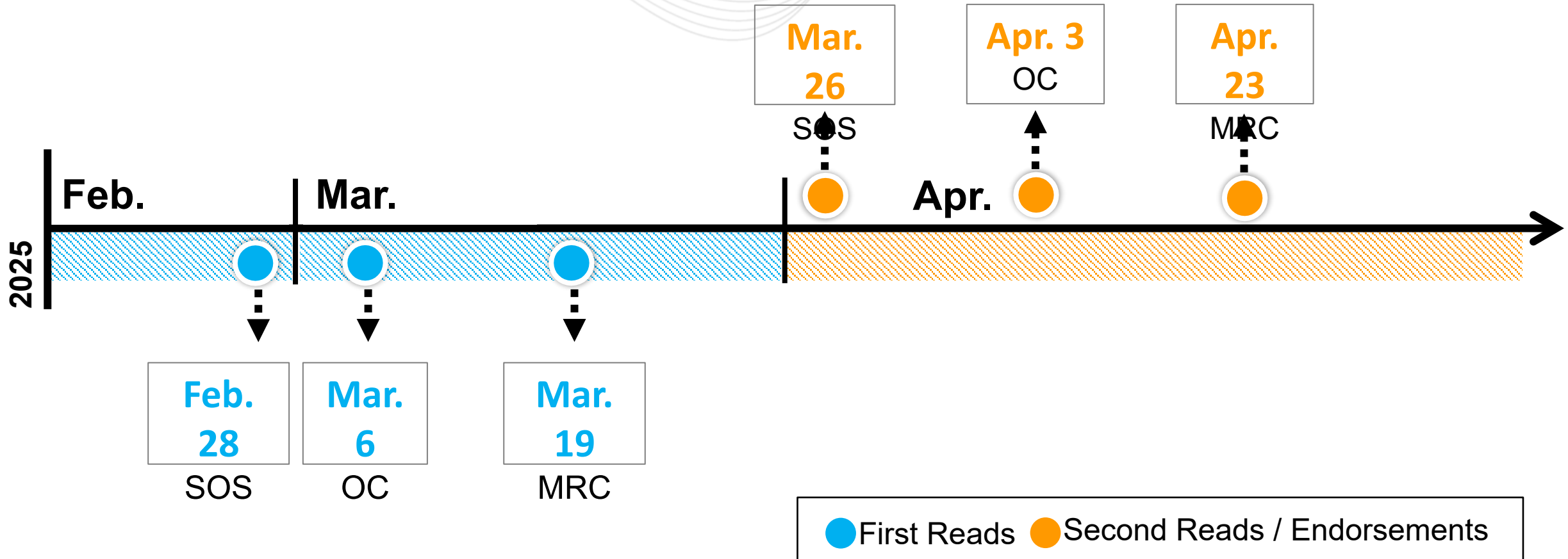
Matthew Wharton, Principal Reliability Engineer

Markets and Reliability Committee

April 23, 2025

- Cover to Cover Periodic Review
- Updated Manual Owner
- Administrative Updates throughout the Manual
 - Corrected links
 - Consistency in style
 - Added links to references where applicable
 - Added clarification language
- Aligned TOP language with [PJM Compliance Bulletin 026 – Coordination with External Transmission Operators](#)

- Section 2.4.2: Updated Enterprise Change Management Standard to Enterprise Change Control Standard
- Section 3.2:
 - Added a reference to PJM Manual 03A Appendix C for details on Transmission Facilities
 - Add clarification to default Baseline Voltage Limits to PJM Baseline Voltage Limits
- Section 3.7: Removed Security Analysis from comparing results
- Attachment A:
 - Section D - Removed posting time requirement for next day study results
 - Section E – Added reliability assessments to include RTCA, TSA



Facilitator:
Lisa Drauschak,
Lisa.Drauschak@pjm.com

Secretary:
Dave Anders, David.Anders@pjm.com

SME/Presenter:
Matthew Wharton,
Matthew.Wharton@pjm.com

PJM Manual 37 Rev 22



Member Hotline

(610) 666 – 8980

(866) 400 – 8980

custsvc@pjm.com

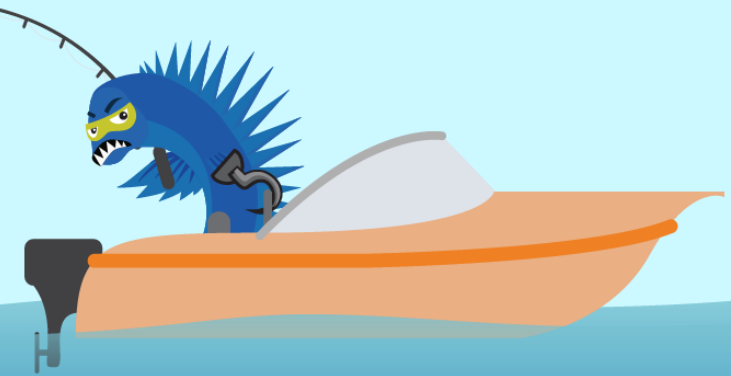
Acronym	Term & Definition
TOP	Transmission Operator is defined as the same meaning set forth in the NERC Glossary of Terms used in NERC Reliability Standards. The entity responsible for the reliability of its “local” transmission system, and that operates or directs the operations of the transmission Facilities.
RTCA	Real Time Contingency Analysis is defined as part of the real time assessment to evaluate the unexpected failure or outage of a system component.
TSA	Transient Stability Analysis is defined as the tool PJM utilizes to establish stability limits as defined in PJM Manual 03 Section 3.9 Stability Limits.

[PJM Glossary](#)

**PROTECT THE
POWER GRID**
**THINK BEFORE
YOU CLICK!**



**BE ALERT TO
MALICIOUS PHISHING
EMAILS**



Report suspicious email activity to PJM.
Call (610) 666-2244 or email it_ops_ctr_shift@pjm.com