

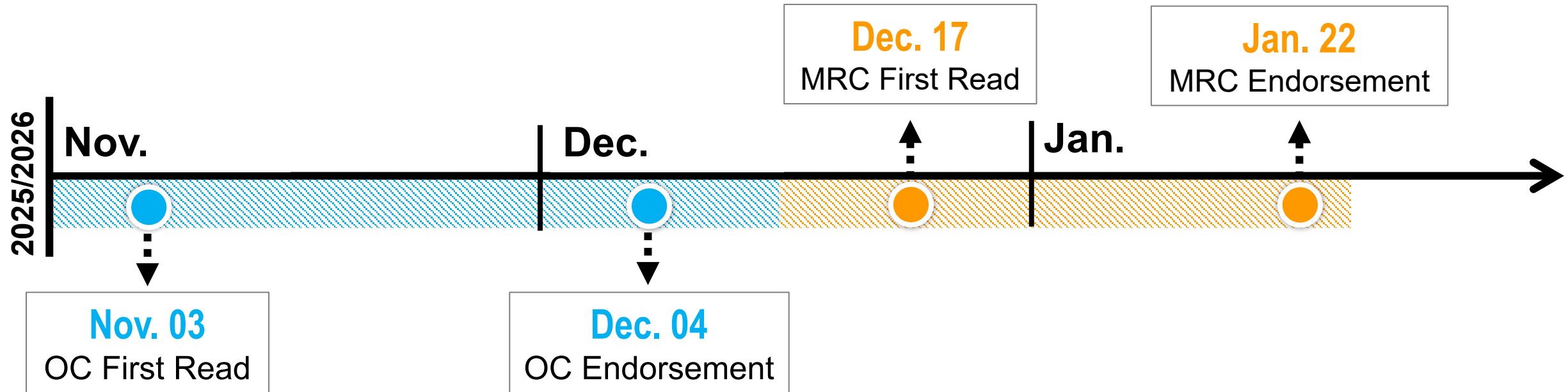
# Manual 02: Transmission Service Request Revision 18

Conway Pan, Sr. Engineer I  
Transmission Service Department

Markets and Reliability Committee  
January 22, 2026

- Updated hyperlinks throughout the document
- Removed references to retired MOD standards
  - Where appropriate, replaced with current NAESB standard
- Section 2.3: ATC Processing
  - Several minor wording updates for clarity / consistency

Manual 02: Transmission Service Request, Revision 18



Chair:  
Lisa Drauschak,  
[Lisa.Drauschak@pjm.com](mailto:Lisa.Drauschak@pjm.com)

Secretary:  
Dave Anders, [David.Anders@pjm.com](mailto:David.Anders@pjm.com)

SME/Presenter:  
Conway Pan, [Conway.Pan@pjm.com](mailto:Conway.Pan@pjm.com)

**Manual 02, Rev 18 Periodic Review**



### Member Hotline

(610) 666 – 8980

(866) 400 – 8980

[custsvc@pjm.com](mailto:custsvc@pjm.com)

# Appendix

### 2.3 ATC Processing

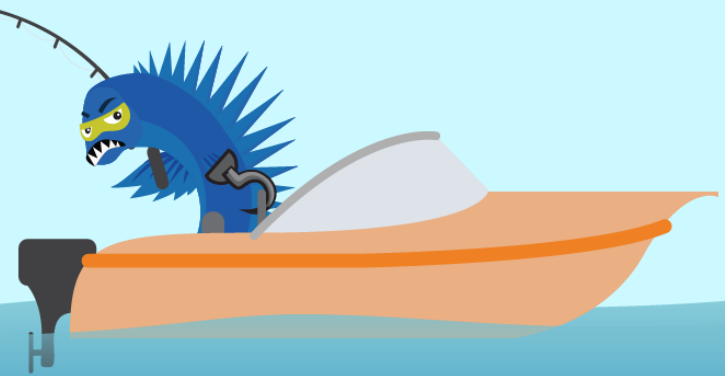
- PJM Transmission Service Department is responsible for the calculation of ATC/AFC. The calculation of transfer capabilities are based on computer simulations of the operation and response of the interconnected transmission network for a specific set of forecasted operating conditions under four specific time frames:
  - Hourly – 1 to 168 hours in the future~~Hour 1 to Hour 168~~
  - Daily – 1 to 35 days in the future
  - Weekly – 1 to 5 weeks in the future
  - Monthly – 1 to 18 months in the future

- The AFC calculator applies the impacts of transmission reservations (or schedules as appropriate) and calculates the Available Flowgate Capability by determining the capacity remaining on individual flowgates for further transmission service activity. The formula used to determine AFC is contained in the AFC algorithm at : <https://www.pjm.com/pjmfiles/pub/oasis/afc-atc-algorithms.pdf>
- The PJM AFC calculation utilizes the AFC values for selected coordinating entity flowgates that are calculated by the Transmission Provider. ~~AFC values for these flowgates calculated overwrite values that the PJM process determines for these flowgates.~~ In the absence of coordinating entity calculated values, the PJM AFC calculation uses the PJM generated values to determine AFC values.
- PJM supplies ~~the~~ coordinating entities with similar values for PJM Flowgates for inclusion in their AFC calculation process.

**PROTECT THE  
POWER GRID**  
**THINK BEFORE  
YOU CLICK!**



**BE ALERT TO  
MALICIOUS PHISHING  
EMAILS**



**Report suspicious email activity to PJM.**  
Call (610) 666-2244 or email [it\\_ops\\_ctr\\_shift@pjm.com](mailto:it_ops_ctr_shift@pjm.com)