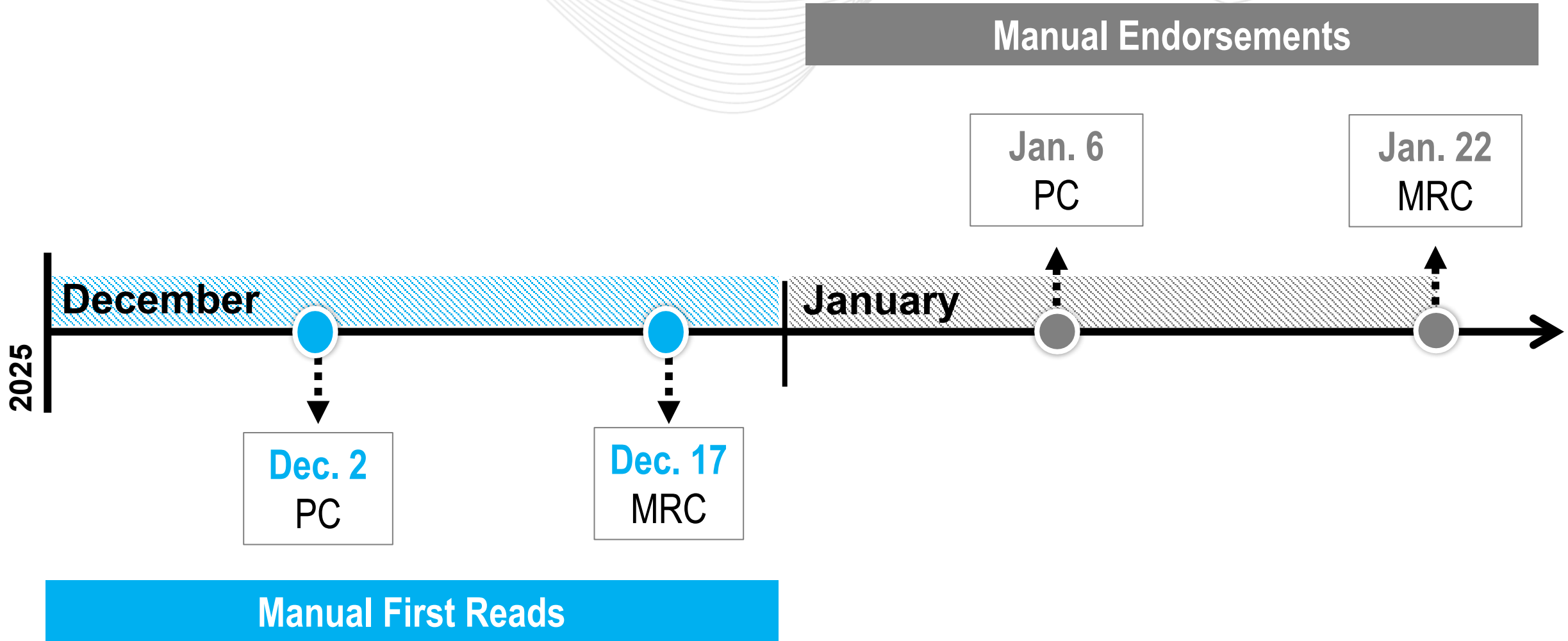


Manual 21B – Conforming Changes to Dual Fuel Class Definitions

Josh Bruno
Markets & Reliability Committee
January 22, 2026

- FERC's acceptance of Docket No. ER25-3413-000 (10/31/2025)
 - Definitions for "Gas Combined Cycle Dual Fuel Class" and "Gas Combustion Turbine Dual Fuel Class" were amended to include certain dual fuel capable gas-fired resources that are similarly situated and comparable to the existing classes of dual fuel gas-fired resources.
- M21B Section 2.4
 - Updated "Gas Combined Cycle Dual Fuel Class" and "Gas Combustion Turbine Dual Fuel Class" definitions to align with the RAA
 - Revised the language regarding the requirements a resource was attesting to so that the language aligns with the new definitions



Facilitator:

Lisa Drauschak,

Lisa.Drauschak@pjm.com

Secretary:

Dave Anders,

David.Anders@pjm.com

SME/Presenter:

Josh Bruno

Joshua.Bruno@pjm.com

PJM Manual 21B

Conforming Changes to Dual Fuel Class Definitions



Member Hotline

(610) 666 – 8980

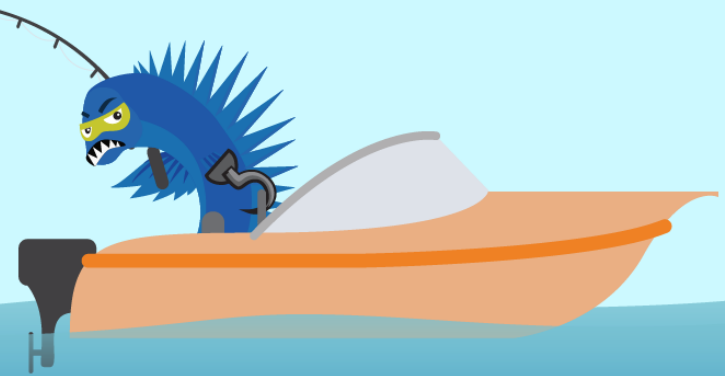
(866) 400 – 8980

custsvc@pjm.com

**PROTECT THE
POWER GRID**
**THINK BEFORE
YOU CLICK!**



**BE ALERT TO
MALICIOUS PHISHING
EMAILS**



Report suspicious email activity to PJM.
Call (610) 666-2244 or email it_ops_ctr_shift@pjm.com