

PJM Manuals 20A, 21B, 22: Periodic Review

Patricio Rocha-Garrido
Resource Adequacy Planning

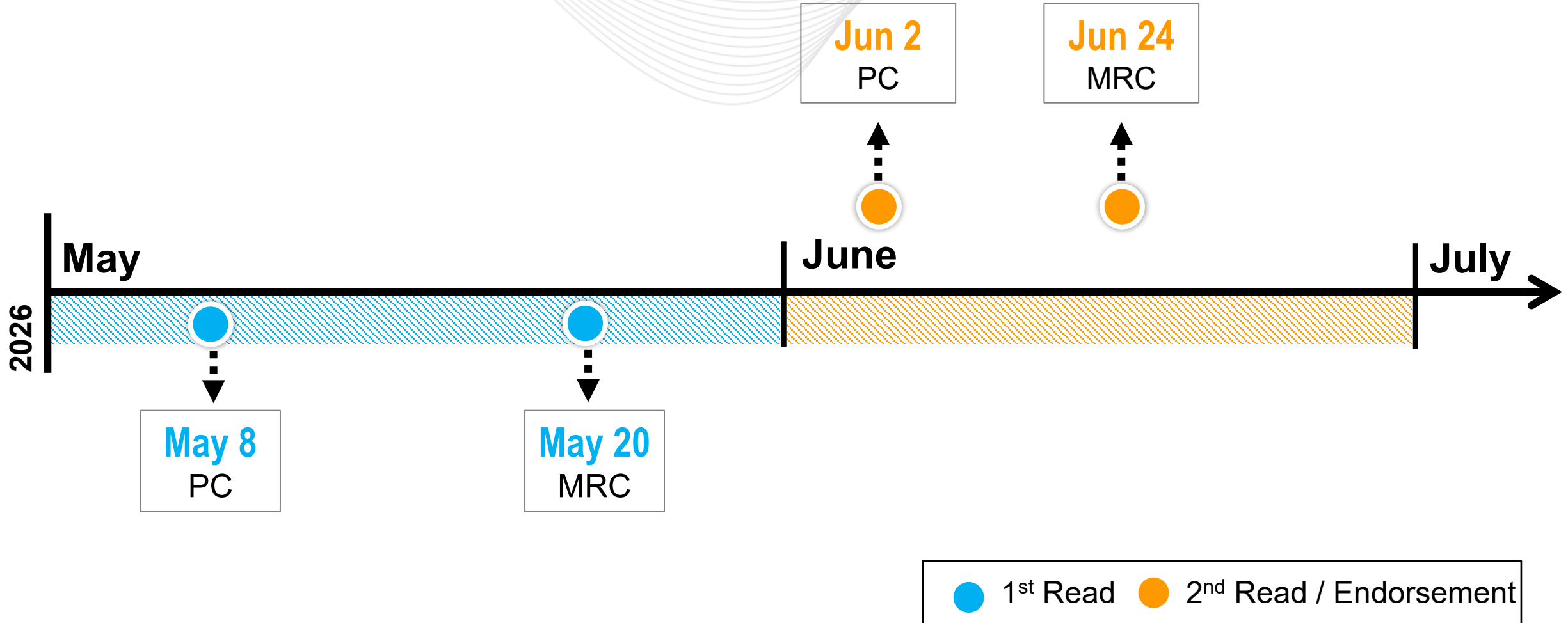
Markets & Reliability Committee
May 20, 2026

- Cover to Cover Periodic Review
- Administrative Updates throughout the Manual
 - Section 1.4: addition of two definitions (Solved simulated annual peak load and Portfolio EUE)
 - Sections 2.6 and 2.7: Calculation of ELCC Class Rating and Resource Specific ELCC Rating is now presented as formula instead of plain text
 - Minor revisions to correct grammar, spelling, references, and punctuation

- Cover to Cover Periodic Review
- Administrative Updates throughout the Manual
 - Clarified additional data can be gathered to facilitate ELCC analysis in Section 9
 - Updated capacity verification section to specify submission deadlines
 - Minor revisions to correct grammar, spelling, references, and punctuation

- Cover to Cover Periodic Review
- Administrative Updates throughout the Manual
 - Added PJM Manuals 21B and 20A to Reference Section and removed PJM Manuals 21 and 20
 - Added pool-wide average Accredited UCAP Factor to Introduction and deleted items that are no longer applicable
 - Added effective dates to the use of the PRISM tool for reliability calculations

Review/Endorsement Timeline



SME/Presenter:
Patricio Rocha-Garrido,
Patricio.Rocha-Garrido@pjm.com

Josh Bruno,
Joshua.Bruno@pjm.com

**PJM Manual 20A, 21B, 22: Periodic
Review**



Member Hotline

(610) 666 – 8980

(866) 400 – 8980

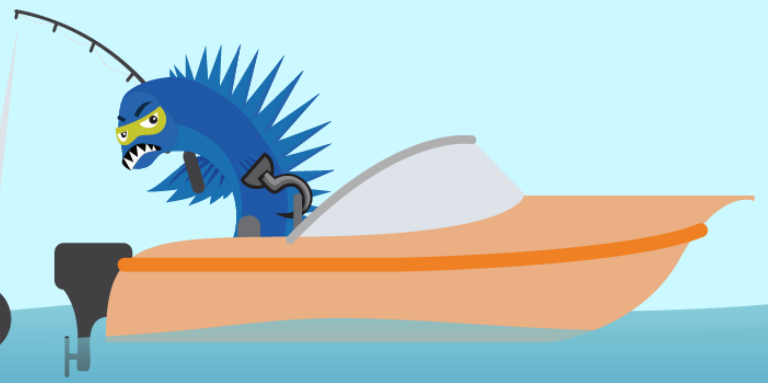
custsvc@pjm.com

**PROTECT THE
POWER GRID**

**THINK BEFORE
YOU CLICK!**



**BE ALERT TO
MALICIOUS PHISHING
EMAILS**



**Report suspicious email activity to PJM.
Call (610) 666-2244 or email it_ops_ctr_shift@pjm.com**