

# Manual 37: Reliability Coordination

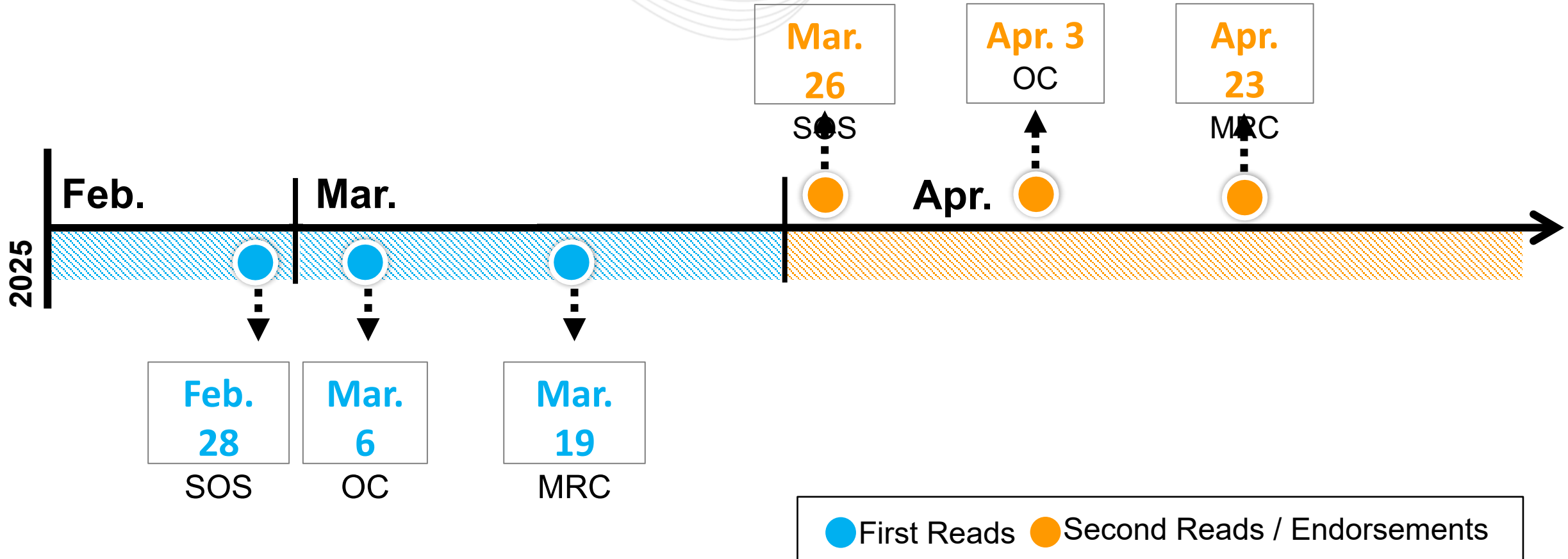
Matthew Wharton, Principal Reliability Engineer

Operating Committee

April 3, 2025

- Cover to Cover Periodic Review
- Updated Manual Owner
- Administrative Updates throughout the Manual
  - Corrected links
  - Consistency in style
  - Added links to references where applicable
  - Added clarification language
- Aligned TOP language with [PJM Compliance Bulletin 026 – Coordination with External Transmission Operators](#)

- Section 2.4.2: Updated Enterprise Change Management Standard to Enterprise Change Control Standard
- Section 3.2:
  - Added a reference to PJM Manual 03A Appendix C for details on Transmission Facilities
  - Add clarification to default Baseline Voltage Limits to PJM Baseline Voltage Limits
- Section 3.7: Removed Security Analysis from comparing results
- Attachment A:
  - Section D - Removed posting time requirement for next day study results
  - Section E – Added reliability assessments to include RTCA, TSA



Facilitator:  
Anita Patel,  
[Anita.Patel@pjm.com](mailto:Anita.Patel@pjm.com)

Secretary:  
Vy Le, [Vy.Le@pjm.com](mailto:Vy.Le@pjm.com)

SME/Presenter:  
Matthew Wharton,  
[Matthew.Wharton@pjm.com](mailto:Matthew.Wharton@pjm.com)

**PJM Manual 37 Rev 22**



**Member Hotline**

(610) 666 – 8980

(866) 400 – 8980

[custsvc@pjm.com](mailto:custsvc@pjm.com)

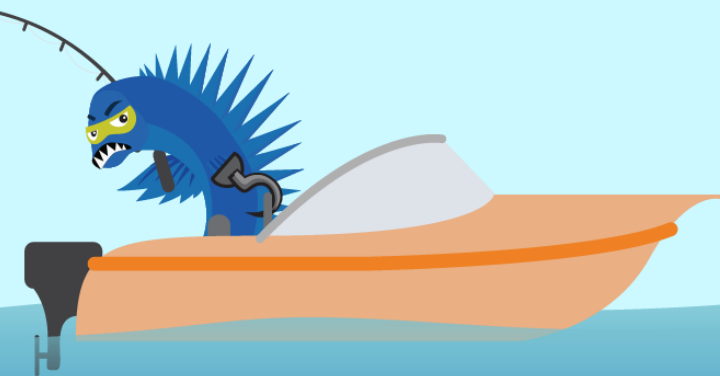
Acronym	Term & Definition
TOP	<b>Transmission Operator</b> is defined as the same meaning set forth in the <a href="#">NERC Glossary of Terms</a> used in NERC Reliability Standards. The entity responsible for the reliability of its “local” transmission system, and that operates or directs the operations of the transmission Facilities.
RTCA	<b>Real Time Contingency Analysis</b> is defined as part of the real time assessment to evaluate the unexpected failure or outage of a system component.
TSA	<b>Transient Stability Analysis</b> is defined as the tool PJM utilizes to establish stability limits as defined in <a href="#">PJM Manual 03</a> Section 3.9 Stability Limits.

[PJM Glossary](#)

**PROTECT THE  
POWER GRID**  
**THINK BEFORE  
YOU CLICK!**



**BE ALERT TO  
MALICIOUS PHISHING  
EMAILS**



**Report suspicious email activity to PJM.**  
Call (610) 666-2244 or email [it\\_ops\\_ctr\\_shift@pjm.com](mailto:it_ops_ctr_shift@pjm.com)