

Future changes around PAI Awareness within PJM's *Emergency Procedures* application

Chidi Ofoegbu, Sr. Lead Engineer
Outage Analysis Technologies

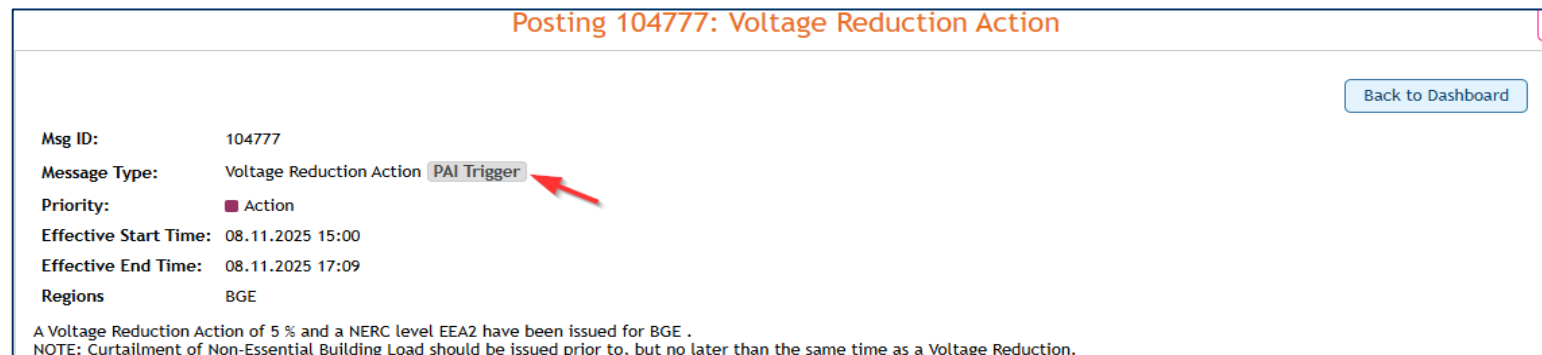
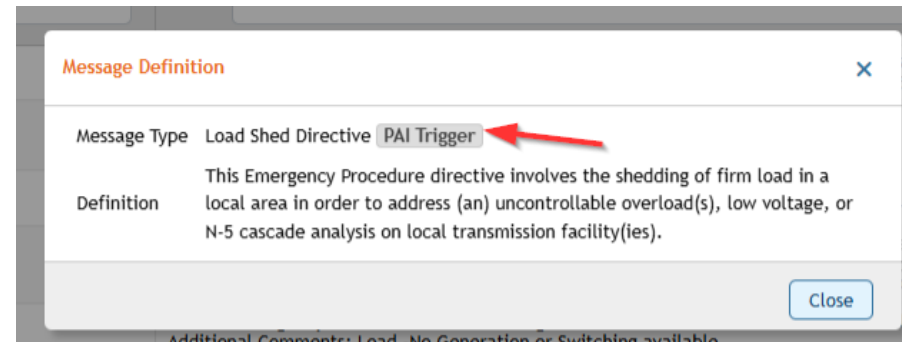
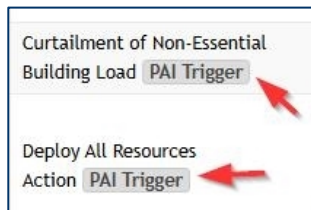
PJM Operating Committee
September 11, 2025

Following feedback from the 08/11 BGE event, changes are planned for the Emergency Procedures (EP) application to further clarify the EP message types which *may* lead to Performance Assessment Intervals (PAIs) but do not mean a PAI is in effect.

- Release date to be announced at [Tech Change Forum](#) when scheduled.
- [PAI data of record](#) found in PJM's *Data Miner* application.

For more information around PJM Performance Assessment Intervals, please see PJM manuals [M-13](#) & [M-18](#).
PAI Education Workshop available [here](#).

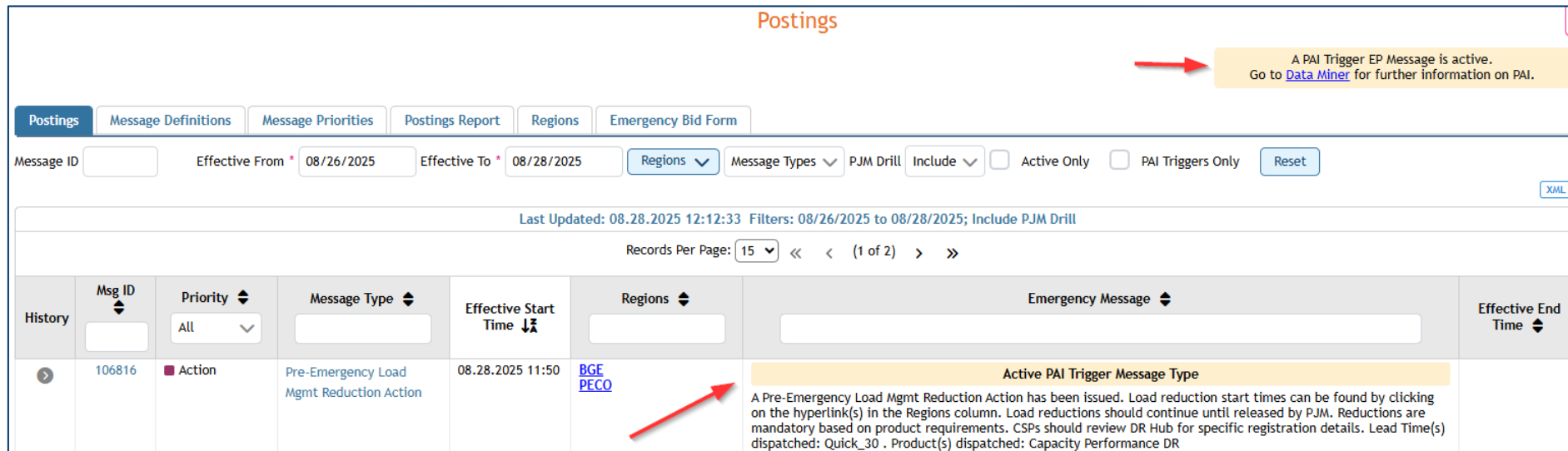
PAI Trigger tags will change to **potential PAI** tags.



Dashboard banner text change to “A potential PAI EP message is active. [Data Miner](#) is the PAI data of record.”

- Data Miner URL change to the Five Minute PAI Intervals page.

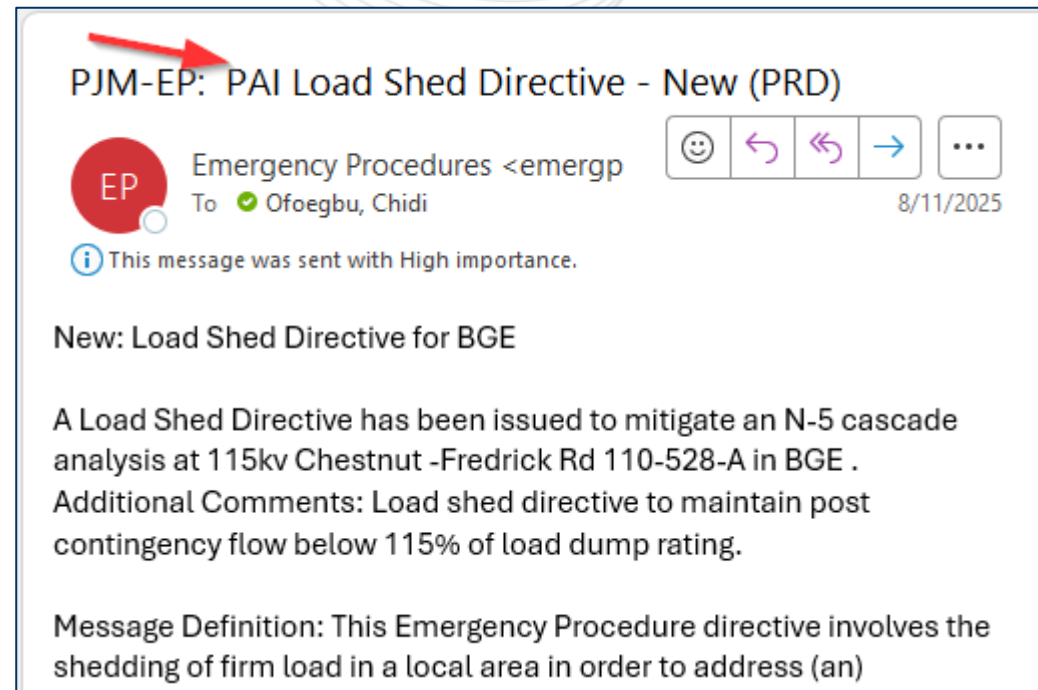
Message banner text change to “This EP message type is a potential PAI, see Data Miner”.



The screenshot shows the PJM Postings dashboard. At the top, a banner reads: "A PAI Trigger EP Message is active. Go to [Data Miner](#) for further information on PAI." Below the banner is a navigation bar with tabs: Postings, Message Definitions, Message Priorities, Postings Report, Regions, and Emergency Bid Form. The main content area shows a table of postings. The first row in the table is highlighted with a red arrow pointing to the "Active PAI Trigger Message Type" column. The table columns are: History, Msg ID, Priority, Message Type, Effective Start Time, Regions, Emergency Message, and Effective End Time. The first row of data shows: History (106816), Priority (Action), Message Type (Pre-Emergency Load Mgmt Reduction Action), Effective Start Time (08.28.2025 11:50), Regions (BGE, PECO), Emergency Message (Active PAI Trigger Message Type), and Effective End Time.

History	Msg ID	Priority	Message Type	Effective Start Time	Regions	Emergency Message	Effective End Time
106816	Action	Pre-Emergency Load Mgmt Reduction Action	08.28.2025 11:50	BGE PECO	Active PAI Trigger Message Type		

Remove “PAI” from EP email notifications.



ONLY applicable to those with EP logins who have set up their EP profiles to receive EP email notifications.

Facilitator:

Anita Patel, Anita.Patel@pjm.com

Secretary:

Vy Le, Vy.Le@pjm.com

SME/Presenter:

Chidi Ofoegbu, Chidi.Ofoegbu@pjm.com

EP Admins, EPAdmin@pjm.com

Changes re: PAI Awareness in EP application

A green speech bubble containing a large black question mark, pointing towards the contact information on the left.

?

A blue speech bubble containing three horizontal white lines, representing a text input field.

Member Hotline

(610) 666 – 8980

(866) 400 – 8980

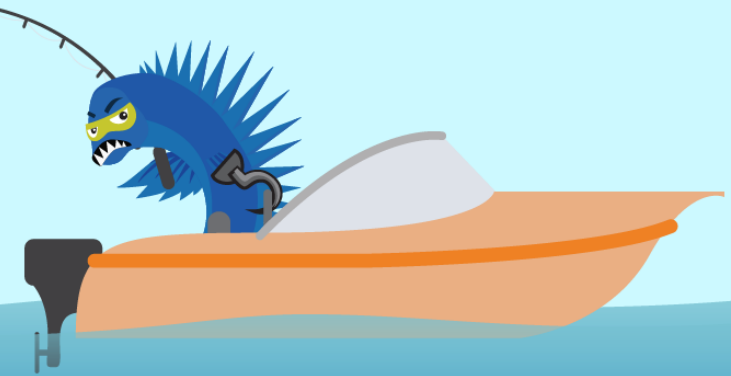
custsvc@pjm.com

**PROTECT THE
POWER GRID**

**THINK BEFORE
YOU CLICK!**



**BE ALERT TO
MALICIOUS PHISHING
EMAILS**



Report suspicious email activity to PJM.
Call (610) 666-2244 or email it_ops_ctr_shift@pjm.com