

# University of Pittsburgh Cyber Energy Center Study

Jim Gluck  
Sr. Director, Cybersecurity

Operating Committee  
September 11, 2025

## Pitt Cyber Energy Center Study

- The University of Pittsburgh Cyber Energy Center (CEC) is a Department of Energy-funded interdisciplinary hub dedicated to securing energy infrastructure by combining cybersecurity research with workforce development.
- PJM was asked to participate in the CEC's Industry Advisory Board to provide input regarding the Center's planned initiatives.
- The CEC is conducting a study to understand the barriers that energy sector organizations face when investing in and implementing stronger cybersecurity measures.
- Learn more about the [Cyber Energy Center](#).



University of  
**Pittsburgh**®  
Cyber Energy Center

- This study will utilize a survey, to be completed by energy industry organizations including PJM Members, to capture details about these barriers and to identify factors that would facilitate improvements.
- The findings from this study will be used to generate insights for industry and academic research as well as to make corporate and public policy recommendations.
- Contact [Dr. Erica Owen](#) at the University of Pittsburgh with any questions about this study.

Share your insights by completing the [survey](#) by September 30, 2025

- Submit anonymously or with attribution
- Responses will be anonymized and analyzed in aggregate.
- Only de-identified, aggregated data will be reported.
- Responses will only be accessible by the Pitt research team.

Contact:

Dr. Erica Owen, University of Pittsburgh  
[ericaowen@pitt.edu](mailto:ericaowen@pitt.edu)

Presenter:  
Jim Gluck

[Jim.Gluck@pjm.com](mailto:Jim.Gluck@pjm.com)



Member Hotline

(610) 666 – 8980

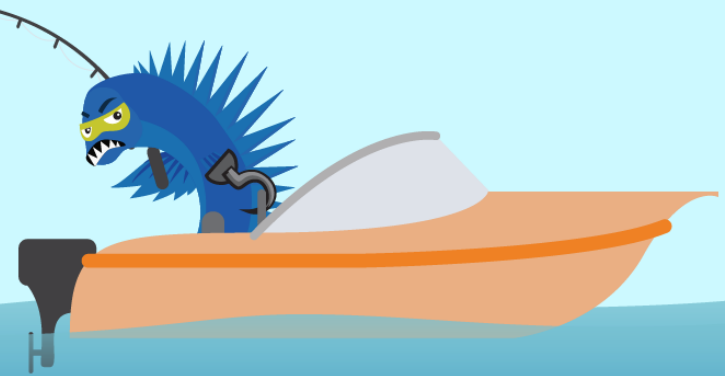
(866) 400 – 8980

[custsvc@pjm.com](mailto:custsvc@pjm.com)

**PROTECT THE  
POWER GRID**  
**THINK BEFORE  
YOU CLICK!**



**BE ALERT TO  
MALICIOUS PHISHING  
EMAILS**



**Report suspicious email activity to PJM.**  
Call (610) 666-2244 or email [it\\_ops\\_ctr\\_shift@pjm.com](mailto:it_ops_ctr_shift@pjm.com)