










FERC-881 – PJM Compliance Update

Bilge Derin, Lead Engineer
EMS Support

Operating Committee
September 11, 2025

	AFC/ATC
	eDART
	EMS
	Markets
	Operations Planning Reliability Studies
	PJM Operator/Support Staff Training
	Weather Forecast tools

November 5, 2025 (Wednesday 1200)

- All 881 lookup table testing activities to end in eDART TRN
- Ambient condition telemetry for TO regions available by request via ICCP

December 10, 2025 (Wednesday 1200)

- By above date, all TOs must have submitted PRD-ready data (*881 Lookup Tables*) in eDART TRN
 - TOs must continue to maintain *non-881 Lookup Tables* in eDART PRD
- PJM EMS Support will begin consuming 881 data to prepare the PRD environment for Go-Live

March 4, 2026 (Wednesday) Hour is TBD

- PJM Go-Live
- TOs maintain only *881 Lookup Tables* in eDART PRD and eDART TRN testing uninhibited



Go-Live Ready



On Target



At Risk



NOT Ready for Go-Live

From December 10, 2025, to PJM 881 Go-Live (March 4, 2026):

- eDART TERM 881 bulk updates, if needed, to be completed ahead of 12/10/2025.
- TO updates to legacy PRD Lookup Tables to be reflected by TOs in their 881 TRN Lookup Tables. (At the time of legacy changes OR at a weekly/bi-weekly true-up periodicity.)
 - Preferably maintained at the facility level, instead of via TERM bulk updates.
 - Via UI or eDART CLI.
 - eDART TRN testing of non-Lookup Table *update* features may proceed as needed.
- Questions or any need for deviations from above to be coordinated with PJM EMS Support via TERMTickets@pjm.com. For assistance with eDART UI/CLI, eDART881@pjm.com.

November 5:

- Availability of PJM's 881-based real-time Ambient Condition telemetry (i.e. Temp Set Index) for TO Regions via ICCP. PJMTelemetrySupport@pjm.com for questions.

Primary Data

Facility level:

- ▶ Real-time (in-use) Rating Sets
- ▶ Forecasted Hourly & Seasonal (monthly) Rating Sets

Metadata

Facility level:

- Rating Set Lookup Tables (AAR, AAR Exceptions & Conditional Ratings)
- DLR only forecasts (included in Primary Forecast Data)
- Facility Type (AAR, DLR or AAR Exception) designations
- Emergency Rating Type Durations
- Projected Conditionals (included in Primary Forecast Data)

Non-Facility level:

- AAR (Temp Set) TO Zonal in-use and Hourly/Seasonal forecasts
- (Sub)station to TO Zonal mapping
- Misc.: Reasons, Limitations, Temp Set details, TO Facility Rating Methodologies, additional reports.

Within eDART Training/Sandbox Environment:

- Data requires eDART access (*Generic* role or higher)
 - Not available on pjm.com or OASIS.
- RTO-level pre-packaged data available via eDART UI (TERM: *PJM Posting Files*) or via CLI ([eDART XML Schema](#))
 - Specific data, including historic, can also be sourced, but pre-packed RTO-wide data made available for ease of consumption/processing.

Facilitator:

Anita Patel, Anita.Patel@pjm.com

Secretary:

Vy Le, Vy.Le@pjm.com

SME/Presenter:

Bilge Derin, Bilge.Derin@pjm.com

Order881@pjm.com

eDART881@pjm.com



Member Hotline

(610) 666 – 8980

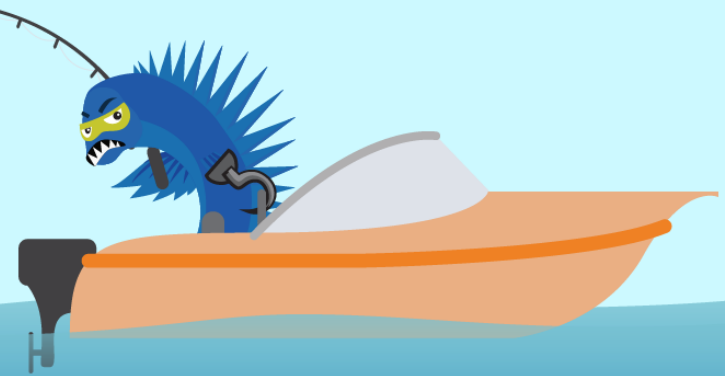
(866) 400 – 8980

custsvc@pjm.com

**PROTECT THE
POWER GRID**
**THINK BEFORE
YOU CLICK!**



**BE ALERT TO
MALICIOUS PHISHING
EMAILS**



Report suspicious email activity to PJM.
Call (610) 666-2244 or email it_ops_ctr_shift@pjm.com