

Storage As a Transmission Asset (SATA) Working Item – Phase 2

Jeff Schmitt, Sr. Manager, Power
Systems Modeling

Operating Committee

October 8, 2025

Date:	Working Group:	Link:
September 11, 2025	Operating Committee	SATA Phase 1 Proposal SATA Phase 2 – Education SATA Phase 2 Options and Package Matrix
August 7, 2025	Operating Committee	SATA Phase 2 Issue Charge SATA Phase 2 Work Plan SATA Phase 2 Options and Package Matrix

- In June of 2020, PJM began analyzing how Energy Storage Resources [SATA Problem Statement](#) which initially began looking at all types of resources available and evaluation against planning criteria in this [presentation](#).
- At the conclusion of working item at PC, a [package](#) was developed and approved by Planning Committee.
- The package was moved to Markets and Reliability Committee and work was put on hold.
- Phase 2, building upon Phase 1 began as a working item in August of 2025 in Operating Committee

Guiding Principles:

- SATA participation in PJM Markets is out of scope
- SATA operations should be similar to a wired solution
- Operational procedures should be as streamlined as possible
- SATA, during phase 2, is considered transmission only and not generation

Phase 2 Deliverable:

- Detailed design for transmission only asset operation and associated manual and tariff language building on 2020 Phase 1 proposal from Planning Committee

Phase 2 Summary:

- Energy Storage that directly affects transmission power flows by injecting or withdrawing power as dispatched by transmission system operator to solve the reliability solution for which it was intended
- SATA is compensated through regulated transmission rates (rate of return)
- SATA will be operated in alignment with intended use for which it was studied through the reliability analysis in planning

SATA Operations

- Operations solution, detailed design pending outcome of working item at Operating Committee

Facilitator:
Anita Petal, Anita.Petal@pjm.com

Secretary:
David Mroz, David.Mroz@pjm.com

SME:
Jeffrey Schmitt,
Jeffrey.Schmitt@pjm.com

Operating Committee



Member Hotline

(610) 666 – 8980

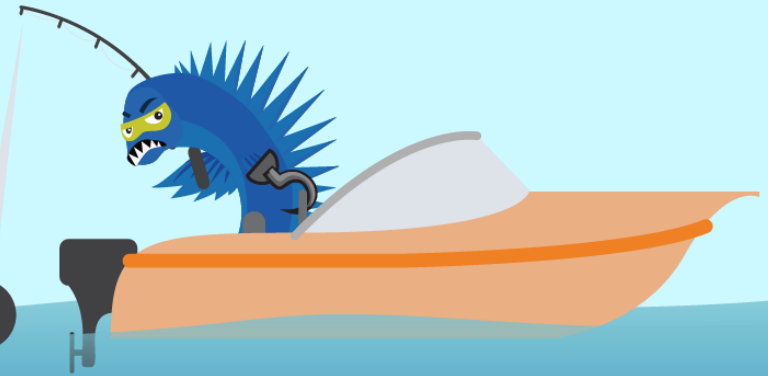
(866) 400 – 8980

custsvc@pjm.com

**PROTECT THE
POWER GRID**
**THINK BEFORE
YOU CLICK!**



**BE ALERT TO
MALICIOUS PHISHING
EMAILS**



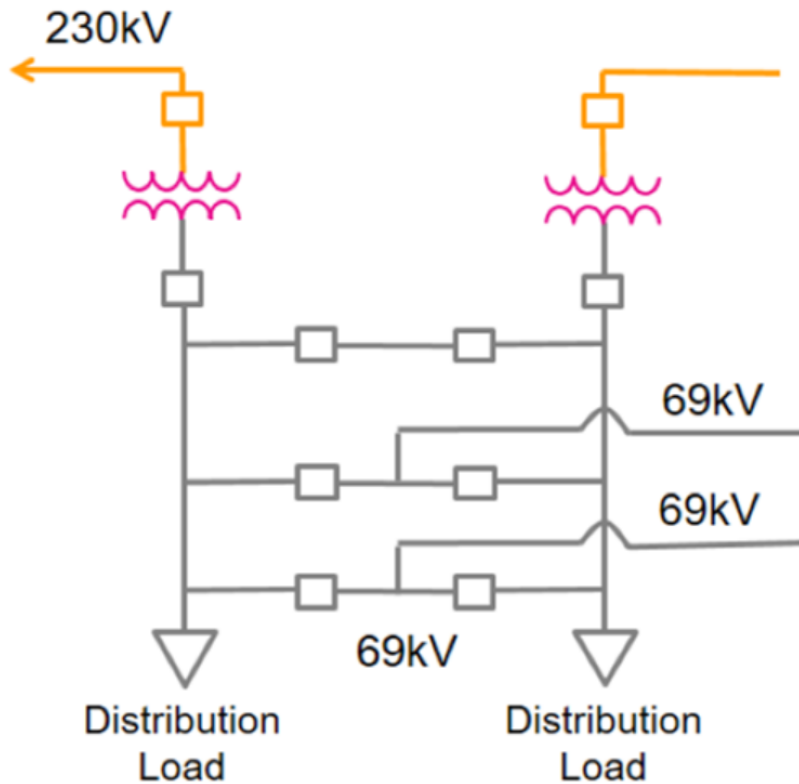
Report suspicious email activity to PJM.
Call (610) 666-2244 or email it_ops_ctr_shift@pjm.com

Appendix

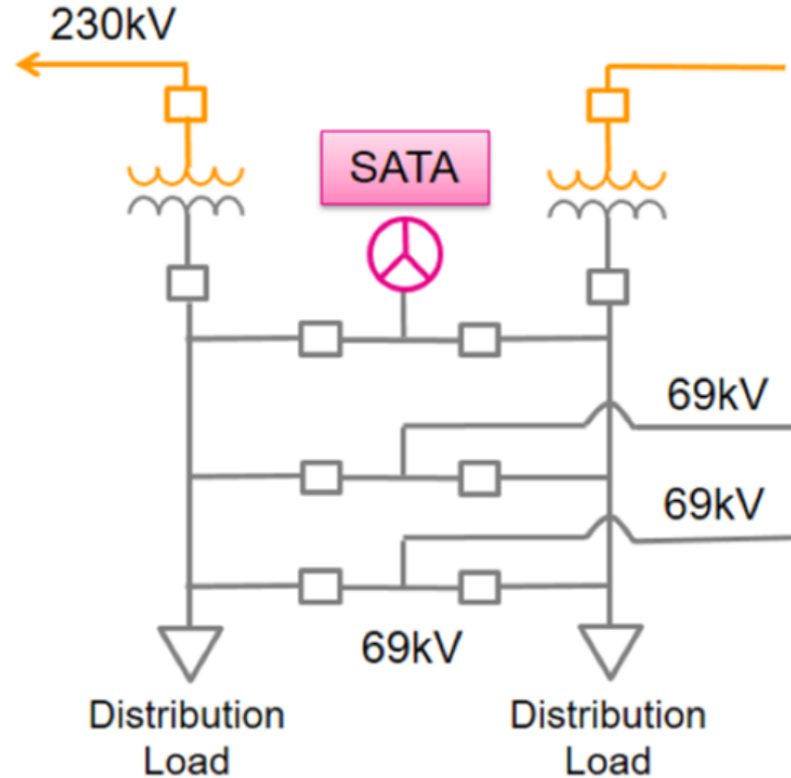
Practical Example

1. Traditional Solution replaces two 230/69kV transformers that may not be at end of life (EOL) with larger transformers

Traditional Solution



SATA Solution



2. SATA Solution installs (interconnects) the storage asset at the 69kV bus for instantaneous post-contingency mitigation
3. The SATA is modeled as ESR, with +/- MW's and state of charge