



# Operations Assessment Task Force 2025-26 Winter Study

Akash Patel  
Engineer II, Transmission Operations  
Operating Committee  
December 04, 2025

## Base Case and Contingencies

- MMWG base case
- Data supplied/reviewed by OATF members

## Generator Outages

- Average generation metrics
- OATF member input

## 50-50 Non-diversified load forecast

- Peak values are aligned so each zone is at its peak load
- This results in RTO load total being elevated

## PJM Interchange

- Scheduled Firm Imports and Exports
- Historical Interchange from last season top 10 peaks

## Renewable Generation

- Seasonal ELCC%

## Planned Transmission outages

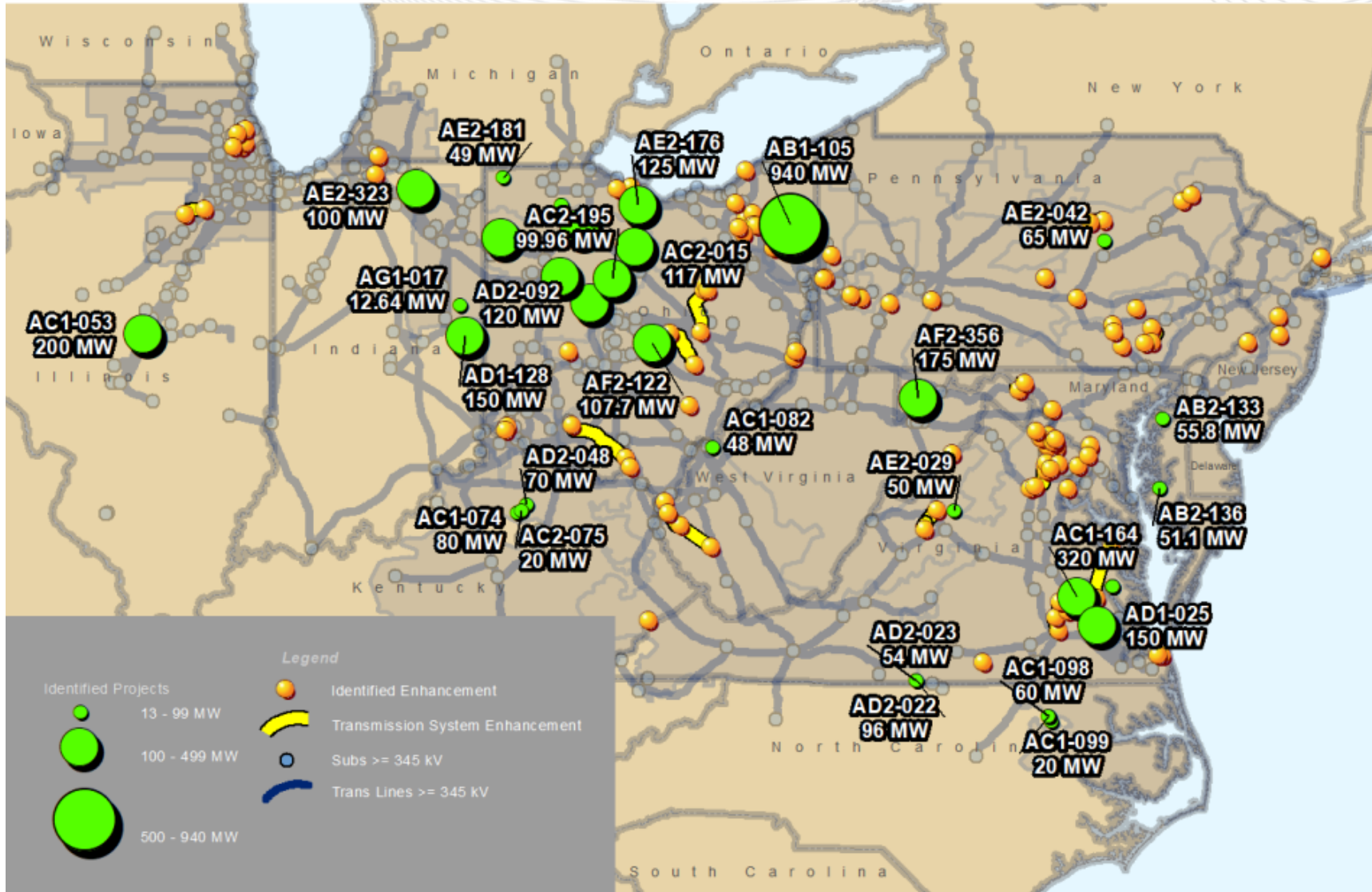
- Currently scheduled in eDart
- Outages scheduled for majority of study period

## 50/50 Non-Diversified Peak Load Base Case

LAS Load Forecast	145,680 MW
RTO Case Interchange	4,971 MW** (Exporting)
PJM RTO Installed Capacity	180,804 MW (Preliminary)
Discrete Generator Outages	15,902 MW

\*\*OATF Case Interchange (-4,971 MW) = Forecasted Net Interchange(-6,000 MW) + Pseudo-Tie Adjustment (1,029 MW)

# Upcoming Generation and Transmission Projects



Voltage Level	Number of Outages*	Outage Information
500 kV	11	APS, DOM, DPL, GPU, PSEG
345 kV	16	AEP, ATSI, COMED, DAYTON, DLCO, PSEG
230 kV	32	BGE, DOM, GPU, PEPCO, PPL, UGI
138 kV	38	AEP, APS, ATSI, COMED, DLCO
115KV	9	BGE, DOM
69KV	40	AE, EKPC, PPL, UGI

\*Only outages > 30 days in duration are included in OATF studies

TO	Voltage	Impactful Outages
APS	500 kV	Bedington 1 & 3 500/138 kV transformers
PSEG	500 kV	East Windsor – NEW Freedom 5038 500 kV line
COMED	345 kV	East Frankfort – 945 Crete 6607 345 kV line
BGE	230 kV	Conastone – Northwest 2322 230 kV line

## Preliminary 50/50 Peak Load Study Results

- No reliability issues identified for base case and N-1 analysis.
- Re-dispatch and switching required to control local thermal or voltage violations in some areas.
- All networked transmission voltage violations were controlled by shunt and tap adjustments



Sensitivity Studies	Results
External contingencies impactful to PJM reliability	No Reliability Concerns
N-1-1 Relay trip conditions	No Reliability Concerns
Max-Cred Contingency Analysis	No Reliability Concerns
90/10 Load Forecast study (150,347 MW diversified peak load forecast)	No Reliability Concerns
Gas Pipeline Study	No Reliability Concerns
Solar and Wind Generation Sensitivity Study	No Reliability Concerns
Transfer Interface Analysis	No Reliability Concerns
BGE/PEPCO Import Capability	No Reliability Concerns

Presenter:

Akash Patel,

[Akash.patel@pjm.com](mailto:akash.patel@pjm.com)

**Operations Assessment Task Force  
2025-26 Winter Study**



**Member Hotline**

(610) 666 – 8980

(866) 400 – 8980

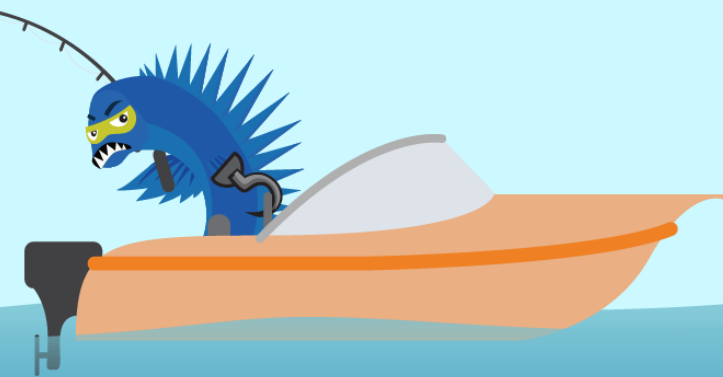
[custsvc@pjm.com](mailto:custsvc@pjm.com)



**PROTECT THE  
POWER GRID**  
**THINK BEFORE  
YOU CLICK!**



**BE ALERT TO  
MALICIOUS PHISHING  
EMAILS**



**Report suspicious email activity to PJM.**  
Call (610) 666-2244 or email [it\\_ops\\_ctr\\_shift@pjm.com](mailto:it_ops_ctr_shift@pjm.com)