

Generation Operational Testing Report

Roger Cao
Sr. Analyst, Performance Compliance

Operating Committee
December 04, 2025

Purpose of testing
is to better ensure
resources are capable
of operating when
needed for reliability
and submitted
parameters are
accurate.

- All Generation Capacity Resources committed in RPM or a FRR Plan are subject to testing except variable resources.
- PJM will inform a resource that a Generation Operational Test is being initiated in real-time via phone call without advance notice.

References: OATT Attachment DD, 7A and PJM M14D Section 7.6

Up to 2 initial tests per unit per season:

Summer (May-October)

and

Winter (November-April)

Considerations for resource selection:

Time since last operation	Operational issues (frequent outages or derates)	Failures to start or operate within resource schedule parameters	Seasonal Prep (cold weather)
---------------------------	--	--	------------------------------

PJM will select a schedule for testing based on the available schedule(s) in Markets Gateway

Time to Start (Notification Time + Applicable Start-Up Time) and Minimum Run Time parameters for the selected schedule will be used for evaluation purposes

Resource **must** meet all criteria below for a successful test:

1. Time from resource commitment to unit breaker close \leq [(Notification Time + Start Up Time) + greater of (10 min or $0.1 \times$ (Notification Time + Start Up Time))]
2. Resource must operate for at least the Minimum Run Time

2025 summer season (June 1, 2025 – Oct. 31, 2025)

Total Tests Called: 59

Technology Called: Coal-fired steam, CT(gas & oil), CC

Test Results:

76% Pass

24% Fail

Most of the failed tests were attributed to unit trip or failed to start.

Results Notification:

Resource Tracker Unit Contacts - Marketing Agent

Follow-up actions:	<ul style="list-style-type: none"> • Ensured outages submitted • Parameters or unit restrictions updated in MG
Positive feedbacks:	<ul style="list-style-type: none"> • GO: desire of expanding the generation operational tests • Dispatch: another tool of identifying and mitigating unit risk

1

Ensure generator operational readiness. Dual fuel units need to have both fuel available in winter.

2

Ensure accurate parameters. Provide additional details in MG for any restrictions or exceptions.

3

Be aware that retest will not be eligible for make-whole. In addition, if failed to start for retest, failure charges will apply.

Chair: Anita Patel
Anita.Patel@pjm.com

Secretary: David Mroz
David.Mroz@pjm.com

SME/Presenter: Roger Cao
Roger.Cao@pjm.com

Generation Operational Testing Report



Member Hotline

(610) 666 – 8980

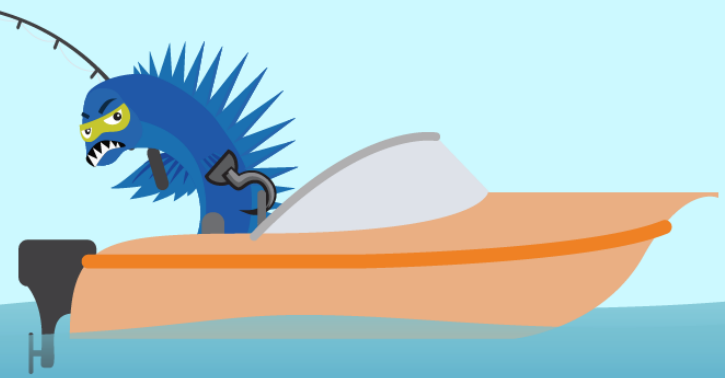
(866) 400 – 8980

custsvc@pjm.com

**PROTECT THE
POWER GRID**
**THINK BEFORE
YOU CLICK!**



**BE ALERT TO
MALICIOUS PHISHING
EMAILS**



Report suspicious email activity to PJM.
Call (610) 666-2244 or email it_ops_ctr_shift@pjm.com