

2026 Day Ahead Scheduling Reserve (DASR)

David Kimmel
Sr. Engineer, Performance Compliance
Operating Committee
December 4, 2025

DASR Req. = LFE + FOR Components

- Time November through October for 3 year period

Load Forecast Error (LFE) Component

- 3 year average of Under forecasted LFE using the 18:00 forecast

Forced Outage Rate (FOR) Component

- 3 year average of eDART Forced Outages, submitted after D-1 18:00, effective after D 8:00 ending before D 20:00

	Load Forecast Error Component 80th Percentile Absolute Error				Forced Outage Rate Component All Forced Outage Tickets				Minimum Operating Reserve
Season	2023	2024	2025	Rollup	2023	2024	2025	Rollup	Req.
Winter	2.03%	1.88%	2.20%	2.04%	2.77%	1.95%	2.52%	2.41%	4.45%
Spring	2.04%	2.05%	2.03%	2.04%	2.06%	1.90%	2.04%	2.00%	4.04%
Summer	2.63%	2.18%	2.37%	2.40%	2.13%	2.16%	2.44%	2.24%	4.64%
Fall	2.22%	2.25%	1.48%	1.98%	2.00%	2.26%	2.18%	2.15%	4.13%
Annual				2.15%				2.23%	4.38%

- 2026 LFE component is 2.15%
- 2026 FOR component is 2.23%
- Final 2025 DASR Requirement is 4.38%

- DASR is calculated November to October over 3 year period
- Final DASR values are calculated each November
- Final DASR values are brought to the Operating Committee during December
- Final DASR value is implemented on January 1

SME/Presenter:
David Kimmel,
David.Kimmel@pjm.com

2026 Day Ahead Scheduling Reserve (DASR)



Member Hotline

(610) 666 – 8980

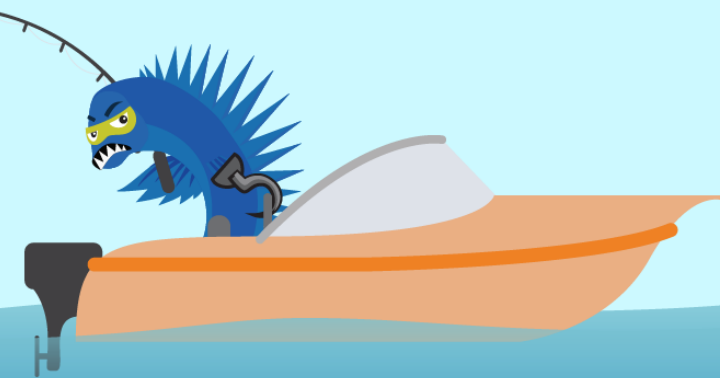
(866) 400 – 8980

custsvc@pjm.com

**PROTECT THE
POWER GRID**
**THINK BEFORE
YOU CLICK!**



**BE ALERT TO
MALICIOUS PHISHING
EMAILS**



Report suspicious email activity to PJM.
Call (610) 666-2244 or email it_ops_ctr_shift@pjm.com