

# New 500 kV Transmission Line Designations

Liem Hoang

Operating Committee  
February 5, 2026

- New 500 kV Transmission Lines for BGE large load customer request.
  - New 500 kV substation will bisect Calvert Cliff - Waugh Chapel 5051 & Calvert Cliff - Chalk Point 5072 lines.
- Each 500 kV line will be assigned a number
  - Specified in PJM Manual-03
  - Purpose is to coordinate inter-zonal line number designations

New 500 kV Lines	Designated Line Number
Calvert Cliffs - Camp Canoy #1	5079
Calvert Cliffs - Camp Canoy #2	5080

- a) *Camp Canoy – Waugh Chapel will retain the 5051 designation.*
- b) *Camp Canoy – Chalk Point will retain the 5072 designation.*

SME:  
Liem Hoang, [liem.hoang@pjm.com](mailto:liem.hoang@pjm.com)



### Member Hotline

(610) 666 – 8980

(866) 400 – 8980

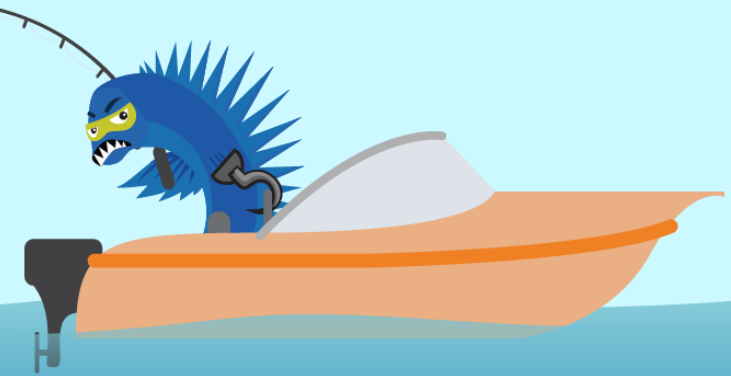
[custsvc@pjm.com](mailto:custsvc@pjm.com)

**PROTECT THE  
POWER GRID**

**THINK BEFORE  
YOU CLICK!**



**BE ALERT TO  
MALICIOUS PHISHING  
EMAILS**



**Report suspicious email activity to PJM.**  
Call (610) 666-2244 or email [it\\_ops\\_ctr\\_shift@pjm.com](mailto:it_ops_ctr_shift@pjm.com)