



System Operations Report

Marcus Smith, Lead Engineer –
Operations Uncertainty & Risk

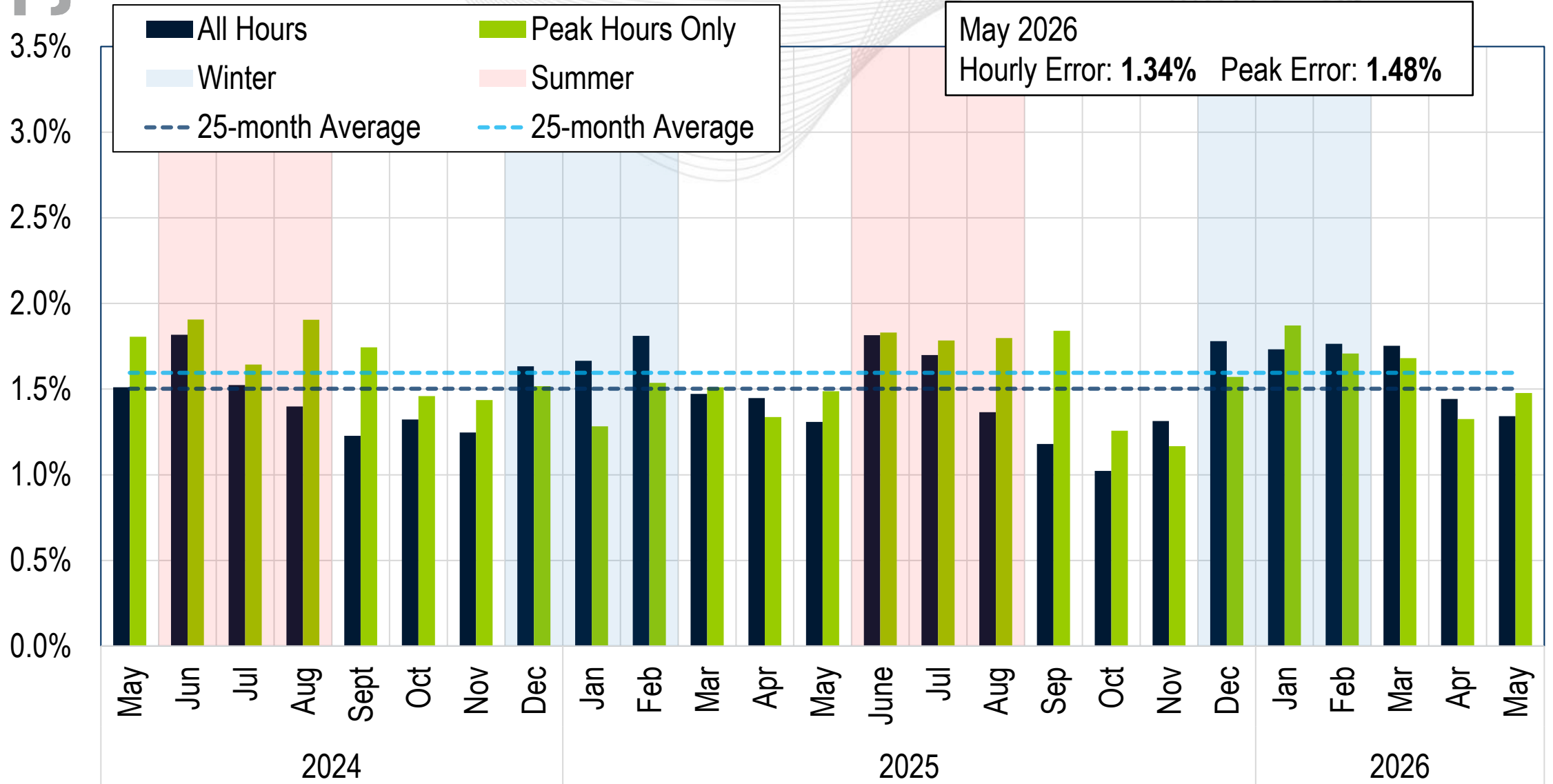
David Kimmel, Sr. Engineer II –
Performance Compliance

Operating Committee

June 4th, 2026

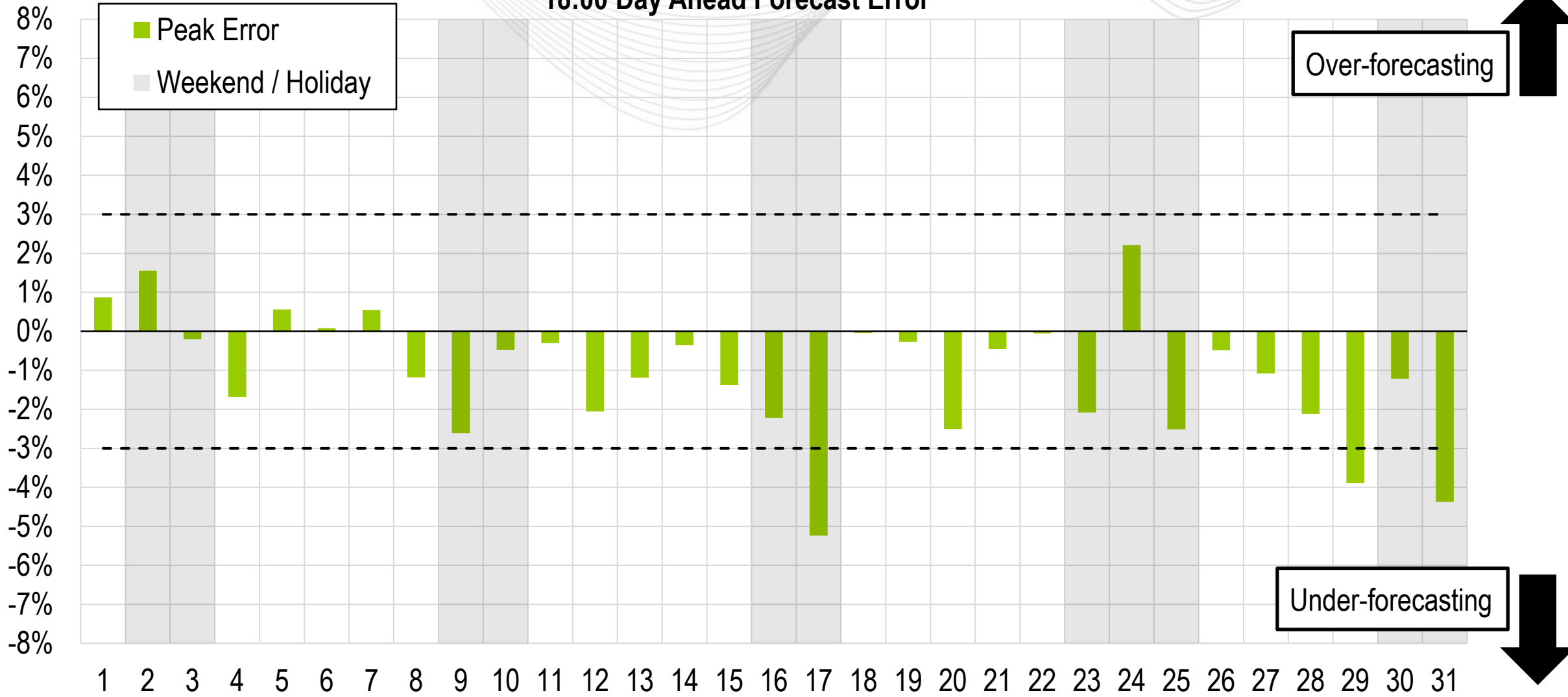


Average Load Forecast Error



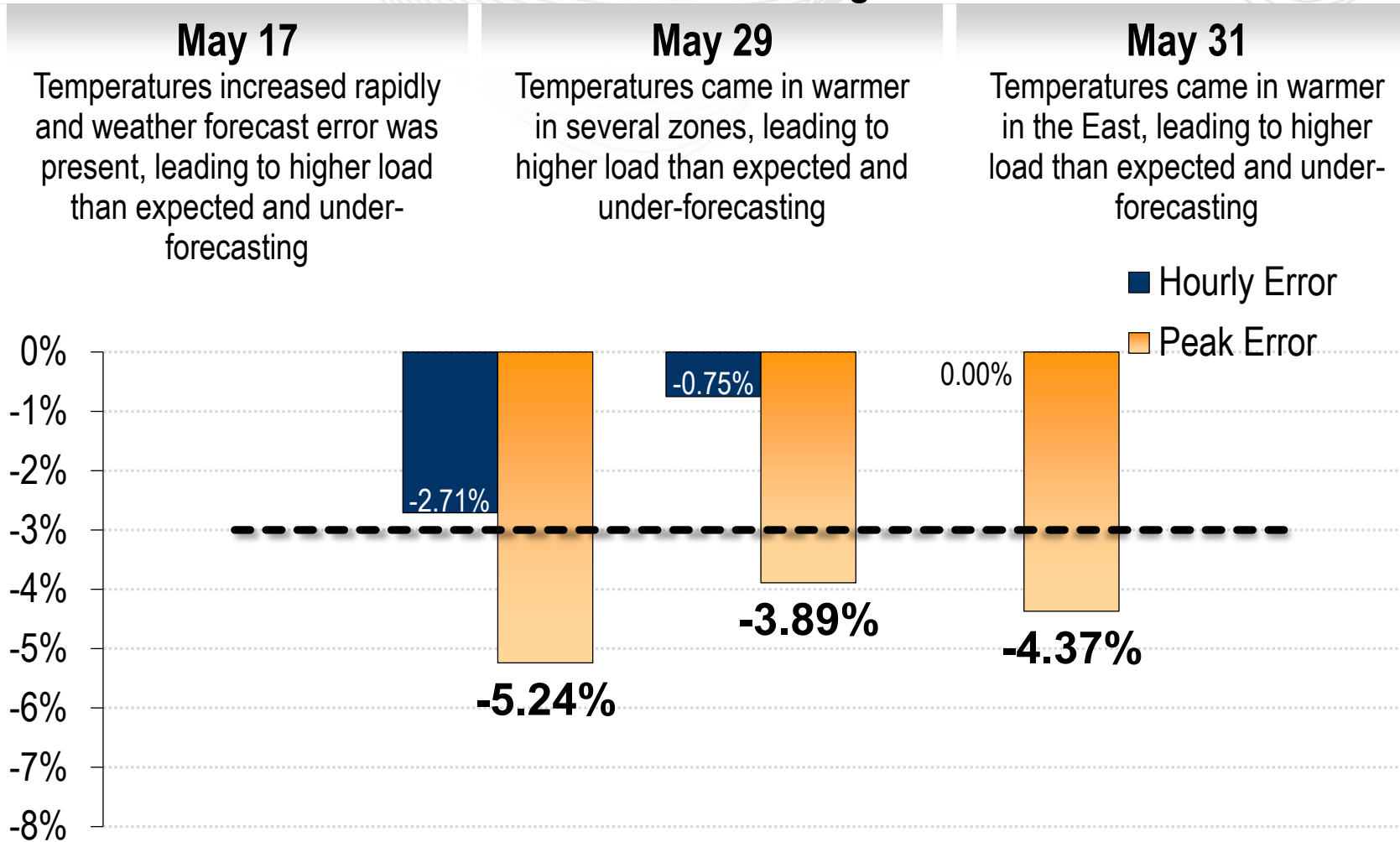
Daily Peak Forecast Error (May)

18:00 Day Ahead Forecast Error



Days Exceeding 3% Forecast Error at Peak Hour

Under-forecasting



May 17

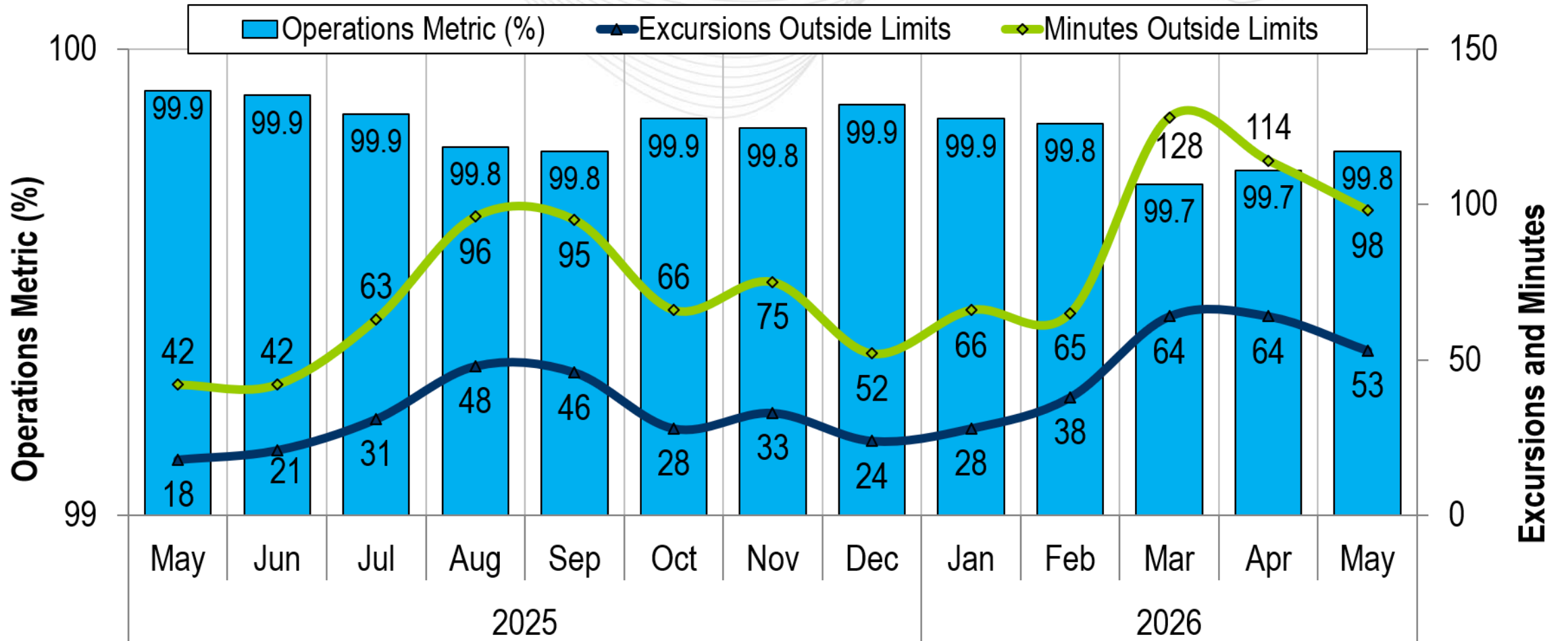
Temperatures increased rapidly and weather forecast error was present, leading to higher load than expected and under-forecasting

May 29

Temperatures came in warmer in several zones, leading to higher load than expected and under-forecasting

May 31

Temperatures came in warmer in the East, leading to higher load than expected and under-forecasting

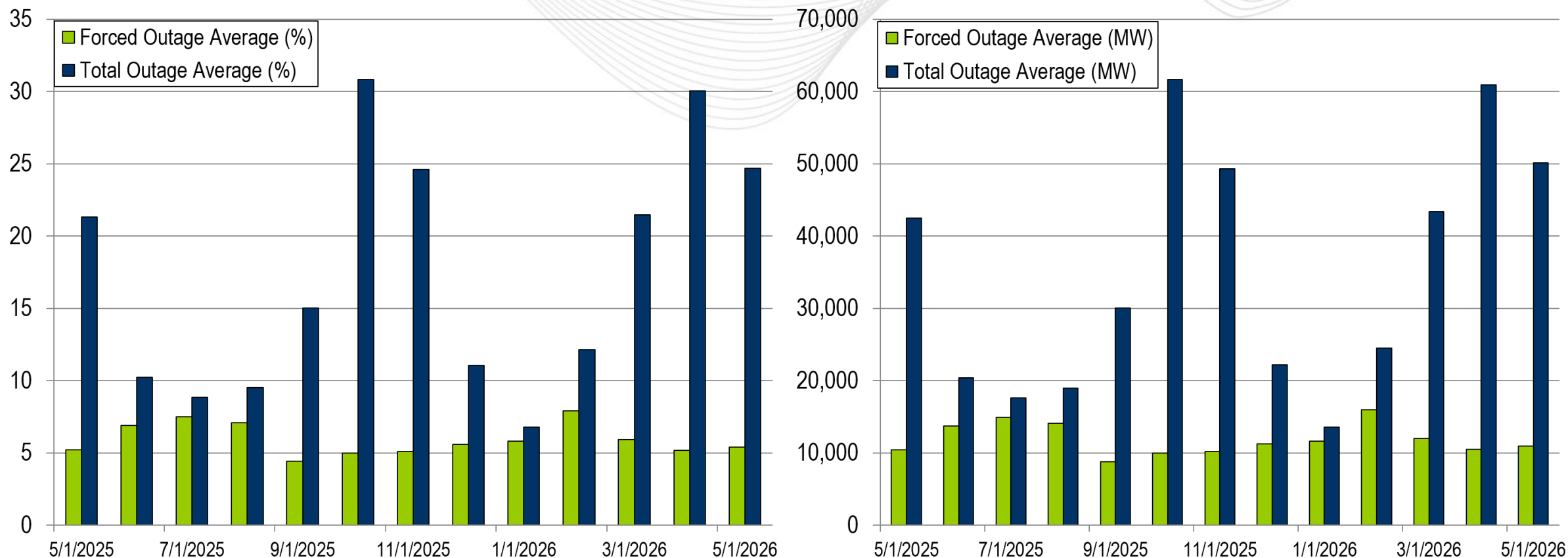


PJM's BAAL performance has exceeded the goal of 99% for each month in 2025 and 2026.

- The following Emergency Procedures occurred:
 - 5 Shared Reserve Events
 - 8 Pre-Emergency Load Management Reduction Actions
 - 2 High System Voltage Actions
 - 3 Hot Weather Alerts
 - 2 Low Voltage Alerts
 - 3 Heavy Load Voltage Schedule Warnings
 - 3 NERC EEA Level 1s
 - 64 Post Contingency Local Load Relief Warnings

- 3 Shortage Cases Approved
- The approved Shortage Cases occurred on:
 - 05/15/2026:
 - 1 shortage case approved for the 09:50 interval
 - Factors: Hydro switching to pumping
 - 05/18/2026:
 - 2 shortage cases approved for the 15:40 and 15:45 intervals
 - Factors: Wind outages due to inclement weather

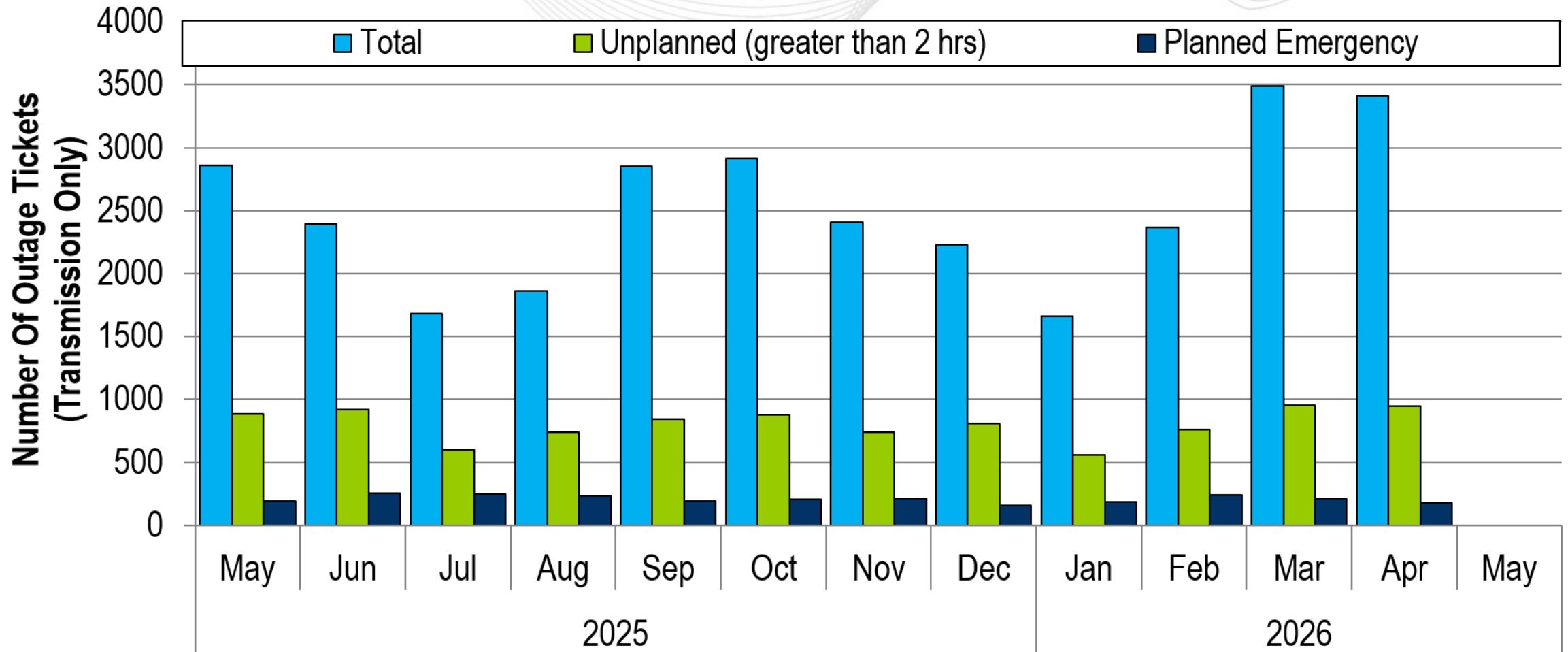
RTO Generation Outage Rate - Monthly



The 13-month average forced outage rate is 5.92% or 11,870 MW.
 The 13-month average total outage rate is 17.46% or 35,088 MW.

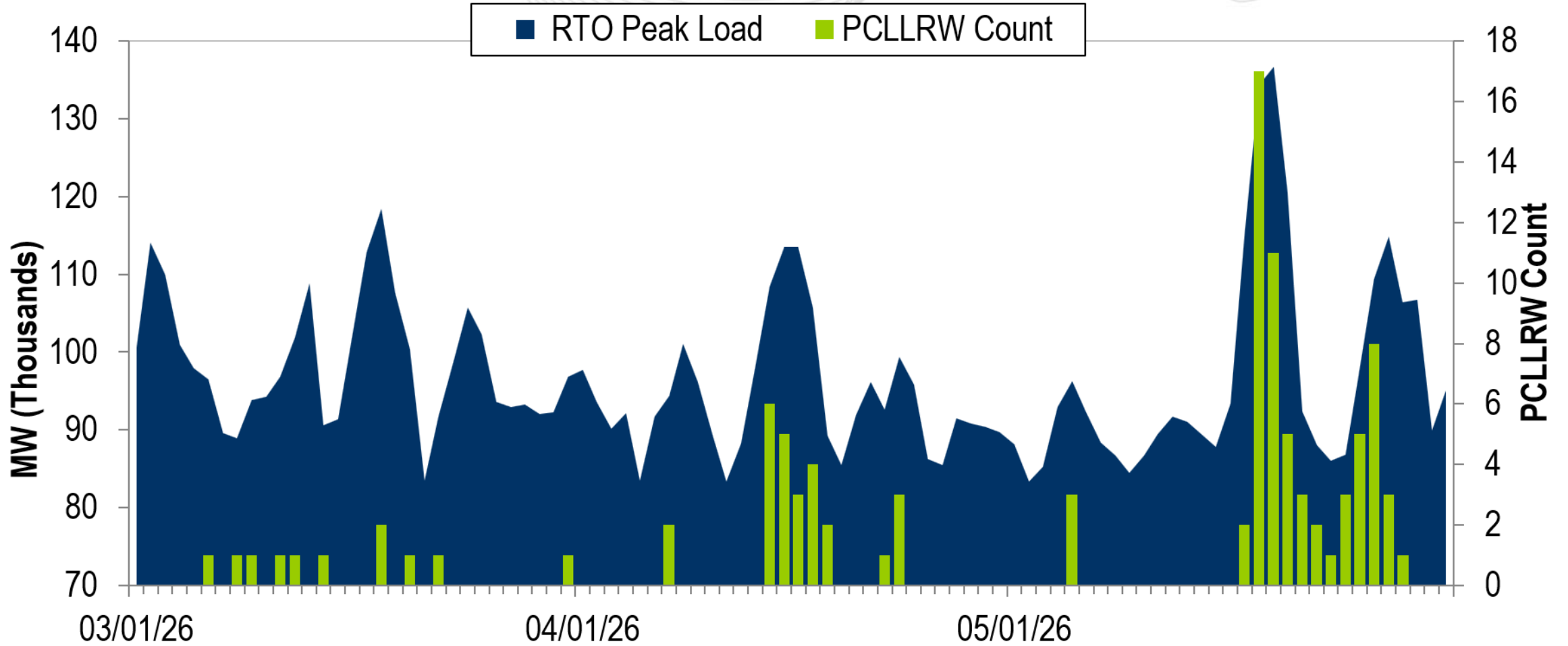


2024-2025 Planned Emergency, Unplanned, and Total Outages by Ticket (Transmission Only)



Note: "Unplanned Outages" include tripped facilities. One tripping event may involve multiple facilities.

PCLLRW Count Vs. Peak Load – Daily Values For 3 Months



There have been no Spin Events for the month of May 2026

Event Counted Toward Qualifying Events	Qualifying Reason	Individual Percent Response To Assignment (%)	Average Percent Response To Assignment (%)
03/01/26 19:29:03	≥10 Minutes	71.0%	71.0%

Load Forecast Report

Presenter/SME:

Marcus Smith,
Marcus.Smith@pjm.com

System Operations Report

Presenter:

David Kimmel,
David.Kimmel@pjm.com

SME:

Ross Kelly,
Ross.Kelly@pjm.com



Member Hotline

(610) 666 – 8980

(866) 400 – 8980

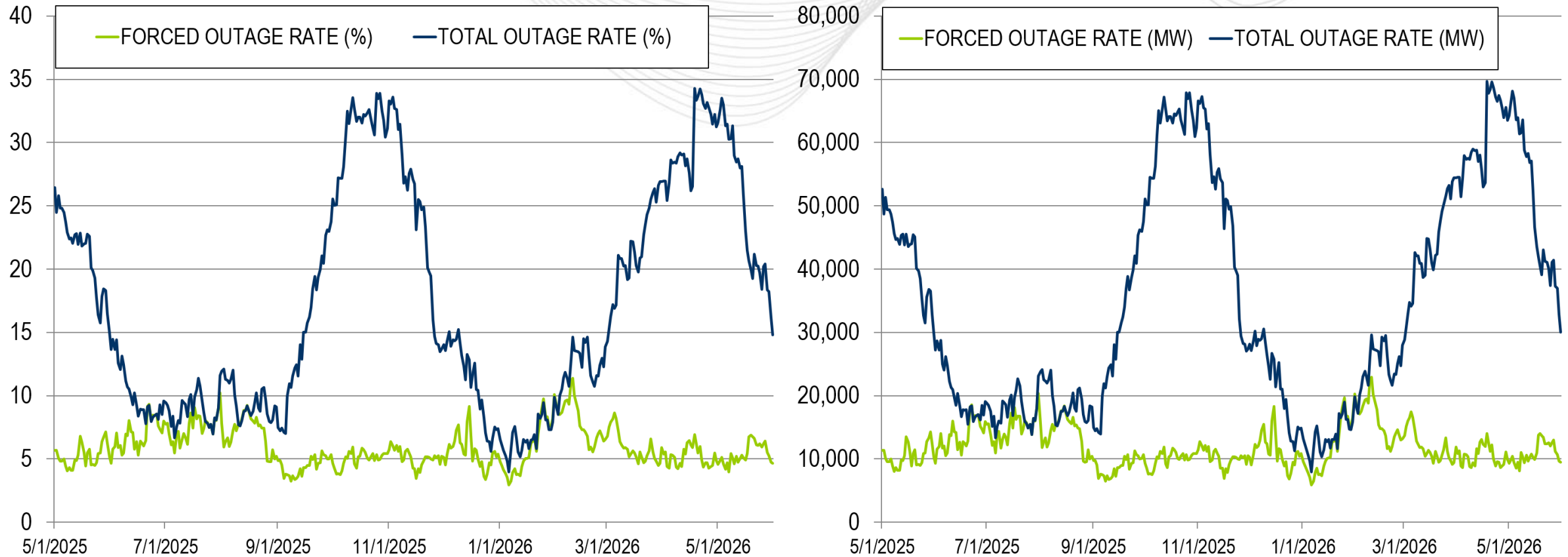
custsvc@pjm.com

Appendix

Goal Measurement: Balancing Authority ACE Limit (BAAL)

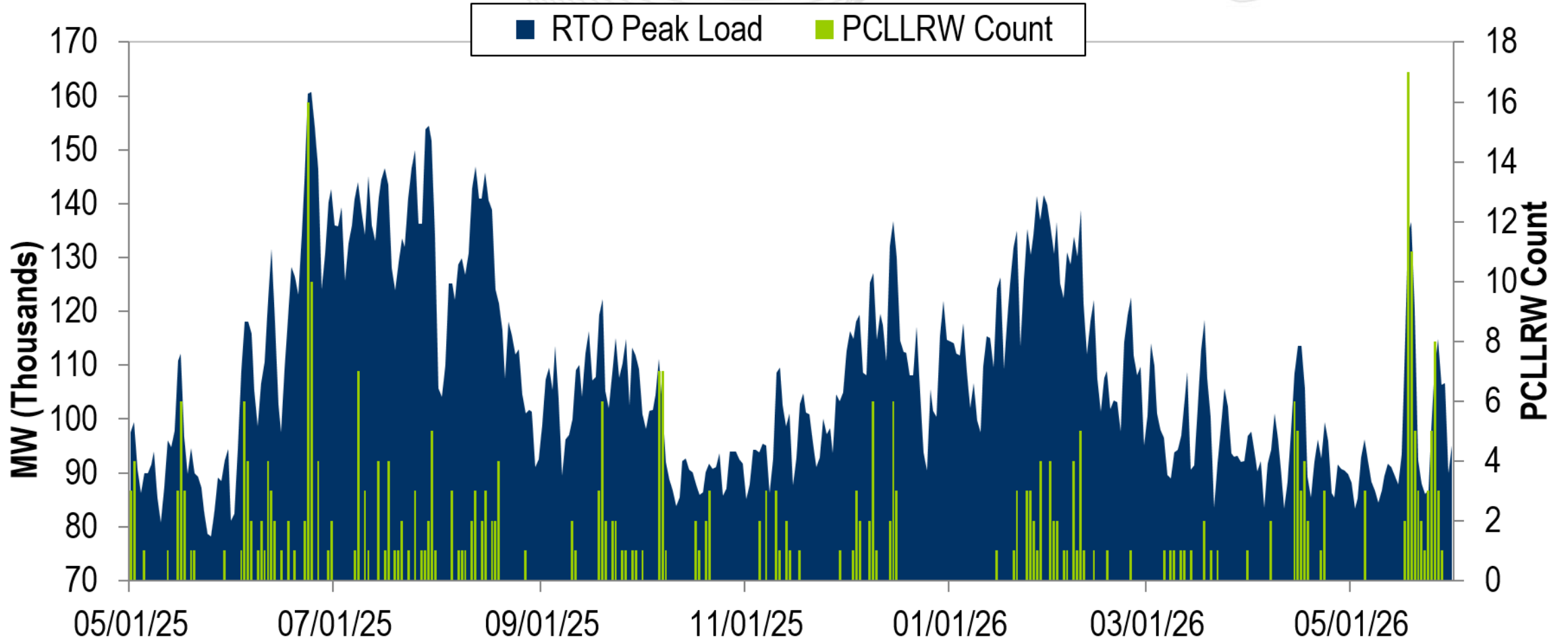
- The purpose of the new BAAL standard is to maintain interconnection frequency within a predefined frequency profile under all conditions (normal and abnormal), to prevent frequency-related instability, unplanned tripping of load or generation, or uncontrolled separation or cascading outages that adversely impact the reliability of the interconnection. NERC requires each balancing authority demonstrate real-time monitoring of ACE and interconnection frequency against associated limits and shall balance its resources and demands in real time so that its Reporting ACE does not exceed the BAAL ($BAAL_{LOW}$ or $BAAL_{HIGH}$) for a continuous time period greater than 30 minutes for each event.
- PJM directly measures the total number of BAAL excursions in minutes compared to the total number of minutes within a month. PJM has set a target value for this performance goal at 99% on a daily and monthly basis. In addition, current NERC rules limit the recovery period to no more than 30 minutes for a single event.

RTO Generation Outage Rate - Daily



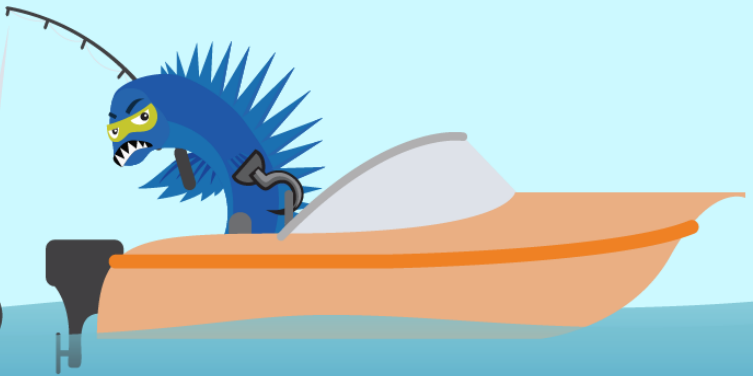
The 13-month average forced outage rate is 5.92% or 11,870 MW.
 The 13-month average total outage rate is 17.46% or 35,088 MW.

PCLLRW Count Vs. Peak Load – Daily Values For 13 Months



**PROTECT THE
POWER GRID**

**THINK BEFORE
YOU CLICK!**



**BE ALERT TO
MALICIOUS PHISHING
EMAILS**



**Report suspicious email activity to PJM.
Call (610) 666-2244 or email it_ops_ctr_shift@pjm.com**