

# Generation Operational Testing Update

Roger Cao

Performance Compliance

Operating Committee

June 04, 2026

**Purpose of testing** is to better ensure resources are capable of operating when needed for reliability and submitted parameters are accurate.

- All Generation Capacity Resources committed in RPM or a FRR Plan are subject to testing except variable resources.
- PJM will inform a resource that a Generation Operational Test is being initiated in real-time via phone call without advance notice.

References: OATT Attachment DD, 7A and PJM M14D Section 7.6

Up to 2 initial tests per unit per season:

**Summer** (May-October)

and

**Winter** (November-April)

## Considerations for resource selection:

Time since last operation	Operational issues (frequent outages or derates)	Failures to start or operate within resource schedule parameters	Seasonal Prep (cold/hot weather)
---------------------------	--	--	----------------------------------

PJM will select a schedule for testing based on the available schedule(s) in Markets Gateway

Time to Start (Notification Time + Applicable Start-Up Time) and Minimum Run Time parameters for the selected schedule will be used for evaluation purposes

Resource **must** meet all criteria below for a successful test:

1. Time from resource called on to unit breaker close  $\leq$  [(Notification Time + Start Up Time) + greater of (10 min or  $0.1 \times$  (Notification Time + Start Up Time))]
2. Resource must operate for at least the Minimum Run Time

Test Evaluation based on data provided by GO

## 2025 winter season (November 1, 2025 – April 31, 2026)

*Total Tests:* 54

*Technology:* Coal-fired steam, CT(gas & oil), CC

		Pass (32, 60%)	Fail (22, 40%)*
<i>Test Results:</i>	<b>43 Initial Tests</b>	65%	35%
	<b>11 Retests</b>	36%	64%

\*2025 summer season 24% Fail

<b>Delayed start:</b>	10 out of 22 tests failed due to time-to-start not met.
<b>Mechanical issues:</b>	Pump, valve, relay, or excitation issues causing units trip off.
<b>Bad telemetry:</b>	RTU or scaling issue.

## 1

2025 winter season show more failed tests than 2025 summer. More failed retests than initial tests.

## 2

GO continue to ensure operational readiness and parameter accuracy.

## 3

Be aware of financial implication of retests. Proactively obtain sufficient data to prove synchronization when failure charges incurred

Chair: Emanuel Bernabeu  
[Emanuel.Bernabeu@pjm.com](mailto:Emanuel.Bernabeu@pjm.com)

Secretary: David Mroz  
[David.Mroz@pjm.com](mailto:David.Mroz@pjm.com)

SME/Presenter: Roger Cao  
[Roger.Cao@pjm.com](mailto:Roger.Cao@pjm.com)

## Generation Operational Testing Update



### Member Hotline

(610) 666 – 8980

(866) 400 – 8980

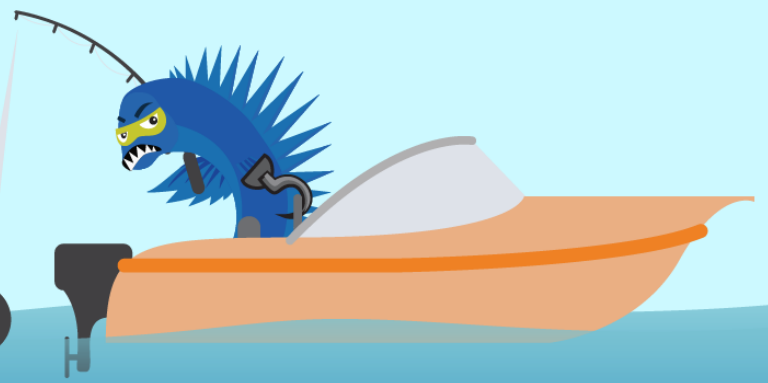
[custsvc@pjm.com](mailto:custsvc@pjm.com)

**PROTECT THE  
POWER GRID**

**THINK BEFORE  
YOU CLICK!**



**BE ALERT TO  
MALICIOUS PHISHING  
EMAILS**



**Report suspicious email activity to PJM.  
Call (610) 666-2244 or email [it\\_ops\\_ctr\\_shift@pjm.com](mailto:it_ops_ctr_shift@pjm.com)**