



# Site Control Modification Manual 14H Update

December 2024  
Planning Committee

Jonathan Thompson  
Interconnection Projects

- In M-14H Section 4.9 shows diagrams of typical New Service Request Connection Types
- Exhibit 9 shows “Generator Interconnection via New Interconnection Switchyard”
- Exhibit 10 is supposed to show “Generator Interconnection into Existing TO Substation” but instead is the same diagram used in Exhibit 9

- Site Control is a foundational way of Project Developers showing readiness in PJM's FERC approved Cycle based interconnection process
- Working through first time evolution of Site Control reviews in TC1
  - Phase 2 end anticipated December 17, 2024
- TC2 application phase closing December 17, 2024
- Several presentations made by PJM around Site Control at IPS
- PJM wants to add detail and clarity to its Manual M-14H around Site Control to communicate requirements as TC1 progresses and TC2 application phase closes

- PJM seeks to correct Exhibit 10
- PJM seeks to provide greater clarification on how Developers can meet tariff requirements for Site Control and what Site modifications are allowed under the tariff
- As PJM continues progress through TC1 and TC2 applications are due in Q4 2024, it is important for Developers to understand what Site Control modifications are allowed under the tariff in order to be able to continue to develop their projects and meet tariff requirements for Site Control at various points of the Interconnection Cycle process

## Current

### 4.9.2 Generator Interconnection into Existing Transmission Owner's Substation

Exhibit (Generator Interconnection into Existing TO Substation) depicts a generator interconnecting to an existing Transmission Owner substation which needs to be expanded to accommodate the interconnection.

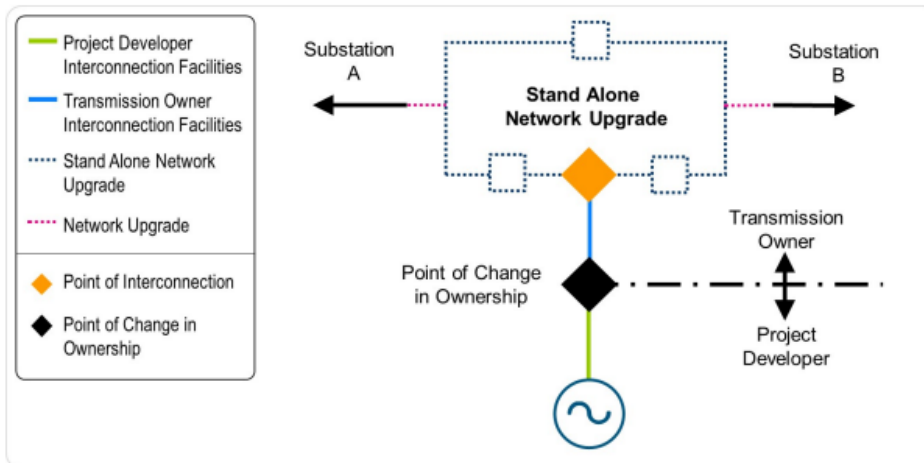


Exhibit 10: Generator Interconnection into Existing TO Substation

## Proposed

### 4.9.2 Generator Interconnection into Existing Transmission Owner's Substation

Exhibit (Generator Interconnection into Existing TO Substation) depicts a generator interconnecting to an existing Transmission Owner substation which needs to be expanded to accommodate the interconnection.

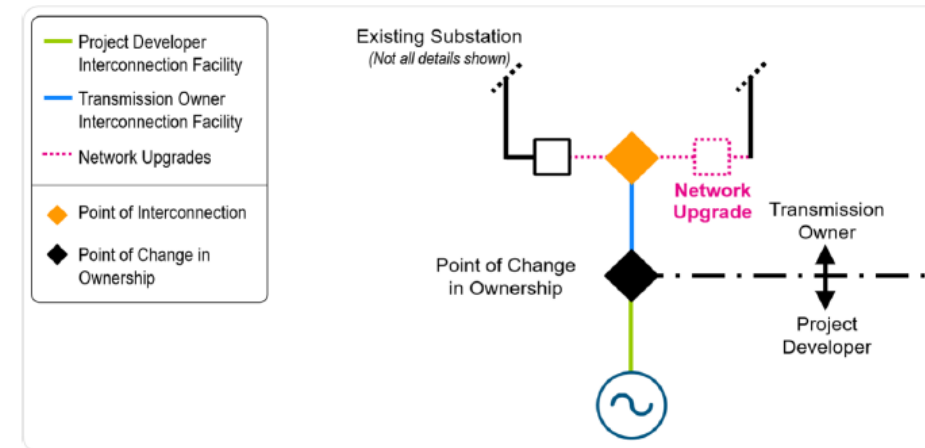


Exhibit 10: Generator Interconnection into Existing TO Substation



- 7.2.1 Application Phase

- Added Paragraph:

The Generating Facility Site Control submitted during the Application Phase establishes the initial Site that will be used to compare to Site Control submissions at the Decision Points. PJM requires the project to maintain Site Control for at least the minimum acres/MW from the application phase through GIA from this initial Site.

- 7.2.2 Decision Point I

- Added Note:

**Note:** Projects are allowed to modify the Generating Facility Site as follows:

**Reduction**

The Generating Facility Site can be reduced as long as the Project continues to meet minimum acres/MW from the initial Site provided during the application phase. If a project reduces its MW size at DP1 its acreage requirements are also reduced.

**Addition**

The Generating Site can be added to if the additional parcels are adjacent to the Generating Facility Site provided during the application phase. If the additional parcels are not physically adjacent, evidence of easements between the new and previously submitted parcels will be required.

See Attachment K for examples of acceptable and unacceptable modifications.

- Removed:

Existing note on easements and Exhibit 23.

- 7.2.3 Decision Point 2

- Changed

- “There are no Site Control requirements associated with Decision Point II”
    - There are no Site Control requirements associated with Decision Point II. While there are no evidentiary requirements at DP2 Site Control must be maintained throughout the Cycle process.”

- Added Note:

Note: Projects are allowed to modify the Generating Facility Site as follows at DP2:

**Addition**

The Generating Site can be added to if the additional parcels are adjacent to the Generating Facility Site provided during the application phase. If the additional parcels are not physically adjacent, evidence of easements between the new and previously submitted parcels will be required. The Term required for projects modifying at DP2 are one year from the end of Phase II of the relevant cycle. This one year Term would be required for the initial Site and the additional Site. See Attachment K for examples of acceptable and unacceptable modifications.



## • 7.2.4 Decision Point III

- Added Note:  
Note: Projects are allowed to modify the Generating Facility Site as follows at DP3:

### **Reduction**

The Generating Facility Site can be reduced as long as the Project continues to meet minimum acres/MW from the initial Site provided during the Application Phase. If a project reduces its MW size at DP1 or DP2 its acreage requirements are also reduced. See Attachment K for examples of acceptable and unacceptable modifications.

- Added Table “Site Control Generating Facility Modifications:

	Addition	Reduction
<b>Decision Point 1</b>	Project Developer can add to Generating Facility provided the additional Site meets tariff requirements and adjacency requirements of either being physically adjacent or evidence of easement to Generating Facility provided during Application Phase	Project Developer can reduce Generating Facility as long as the Site provided during Application Phase continues to meet acres/MW requirement and all Site Control evidentiary requirements. If MW of Project is reduced acreage requirements are also reduced.
<b>Decision Point 2</b>	Additional Site must meet adjacency requirements of either being physically adjacent or evidence of easement to Generating Facility provided during Application Phase	Project Developer can remove parcels. There is not any Site Control evidentiary requirements at DP2.
<b>Decision Point 3</b>	No additions allowed	Project Developer can reduce Generating Facility as long as the Site provided during Application Phase continues to meet acres/MW requirement and all Site Control evidentiary requirements.
<b>Post GIA</b>	Generating Facility changes require NSA to determine if change is allowed. If allowed, PJM will process an Agreement to Amend.	Generating Facility changes require NSA to determine if change is allowed. If allowed, PJM will process an Agreement to Amend.



- New Attachment showing example diagram progressions of allowable and not allowable Site Control modifications throughout Cycle process
  - K.1 Generation Interconnection Allowable Modification Progressions
    - 3 examples
  - K.2 Generation Interconnection Not Allowable Modification Progressions
    - 2 examples

## Presenter:

Jonathan Thompson

Interconnection Projects

[Jonathan.Thompson@pjm.com](mailto:Jonathan.Thompson@pjm.com)



## Member Hotline

(610) 666 – 8980

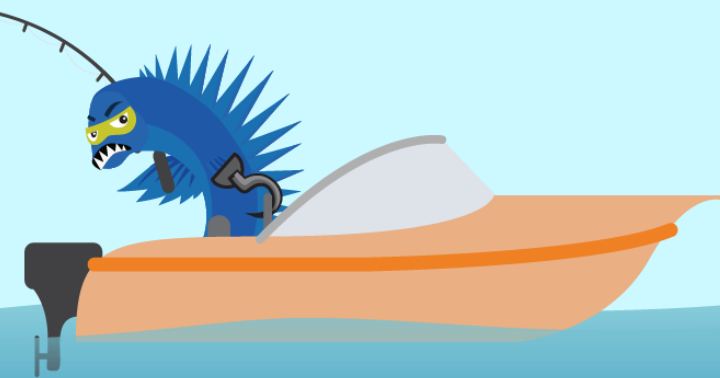
(866) 400 – 8980

[custsvc@pjm.com](mailto:custsvc@pjm.com)

**PROTECT THE  
POWER GRID**  
**THINK BEFORE  
YOU CLICK!**



**BE ALERT TO  
MALICIOUS PHISHING  
EMAILS**



**Report suspicious email activity to PJM.**  
Call (610) 666-2244 or email [it\\_ops\\_ctr\\_shift@pjm.com](mailto:it_ops_ctr_shift@pjm.com)