

# PJM Manuals 20A, 21B, 22: Periodic Review

Patricio Rocha-Garrido

Resource Adequacy Planning

Planning Committee

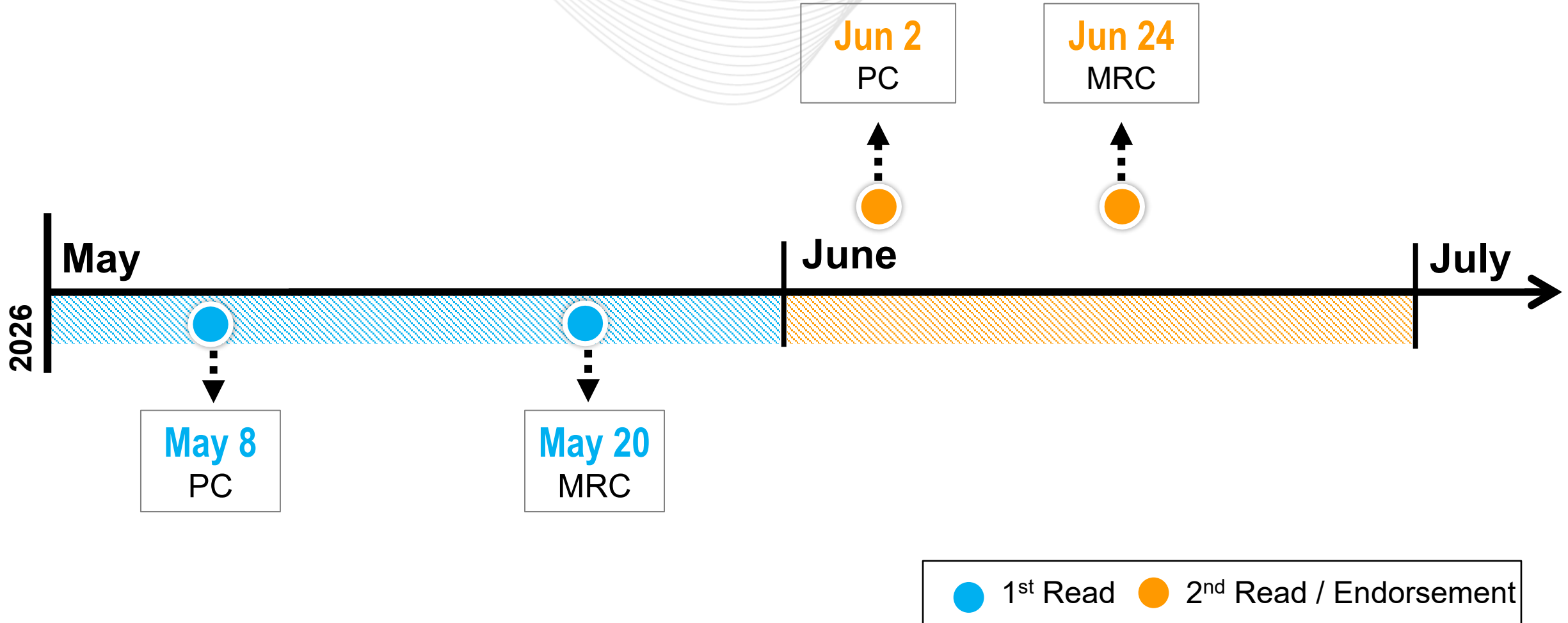
May 8, 2026

- Cover to Cover Periodic Review
- Administrative Updates throughout the Manual
  - Section 1.4: addition of two definitions (Solved simulated annual peak load and Portfolio EUE)
  - Sections 2.6 and 2.7: Calculation of ELCC Class Rating and Resource Specific ELCC Rating is now presented as formula instead of plain text
  - Minor revisions to correct grammar, spelling, references, and punctuation

- Cover to Cover Periodic Review
- Administrative Updates throughout the Manual
  - Clarified additional data can be gathered to facilitate ELCC analysis in Section 9
  - Updated capacity verification section to specify submission deadlines
  - Minor revisions to correct grammar, spelling, references, and punctuation

- Cover to Cover Periodic Review
- Administrative Updates throughout the Manual
  - Added PJM Manuals 21B and 20A to Reference Section and removed PJM Manuals 21 and 20
  - Added pool-wide average Accredited UCAP Factor to Introduction and deleted items that are no longer applicable
  - Added effective dates to the use of the PRISM tool for reliability calculations

# Review/Endorsement Timeline



SME/Presenter:  
Patricio Rocha-Garrido,  
[Patricio.Rocha-Garrido@pjm.com](mailto:Patricio.Rocha-Garrido@pjm.com)

Josh Bruno,  
[Joshua.Bruno@pjm.com](mailto:Joshua.Bruno@pjm.com)

**PJM Manual 20A, 21B, 22: Periodic  
Review**



**Member Hotline**

(610) 666 – 8980

(866) 400 – 8980

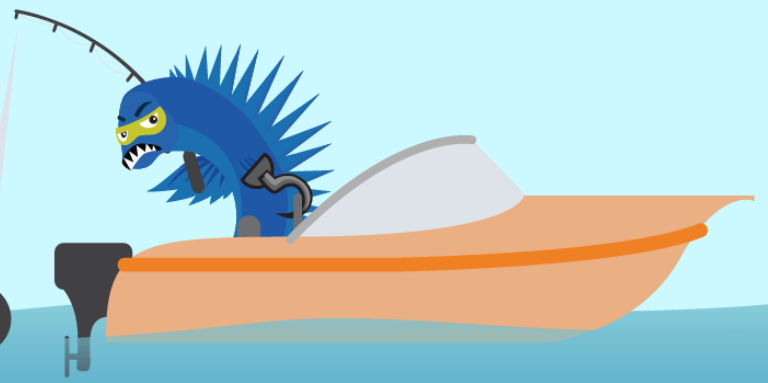
[custsvc@pjm.com](mailto:custsvc@pjm.com)

**PROTECT THE  
POWER GRID**

**THINK BEFORE  
YOU CLICK!**



**BE ALERT TO  
MALICIOUS PHISHING  
EMAILS**



**Report suspicious email activity to PJM.  
Call (610) 666-2244 or email [it\\_ops\\_ctr\\_shift@pjm.com](mailto:it_ops_ctr_shift@pjm.com)**