

# Large Load Adjustment Request Timeline 2027 Load Forecast

Molly Mooney

Resource Adequacy Planning

Planning Committee

July 7, 2026

*Disclaimer: While materials are current at the time of publishing, applicable requirements may change. PJM Governing Documents control.*



# 2026 Timeline for Large Load Adjustment Requests

Jan. 2026

2026 Load Forecast Published

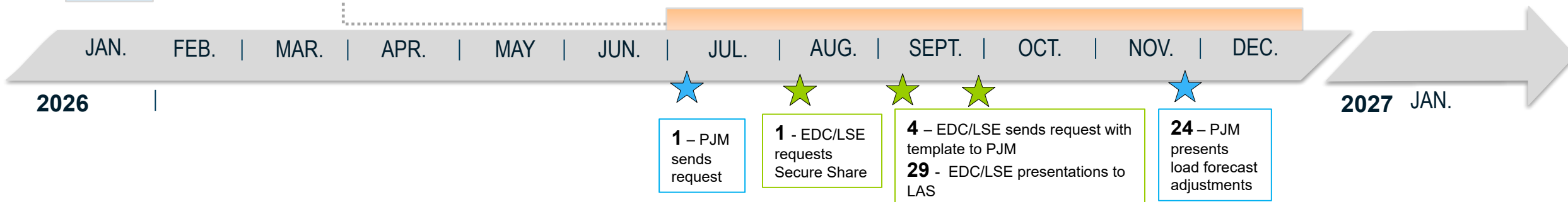
July-Dec. 2026

## Schedule for 2027 Load Forecast Adjustment Process

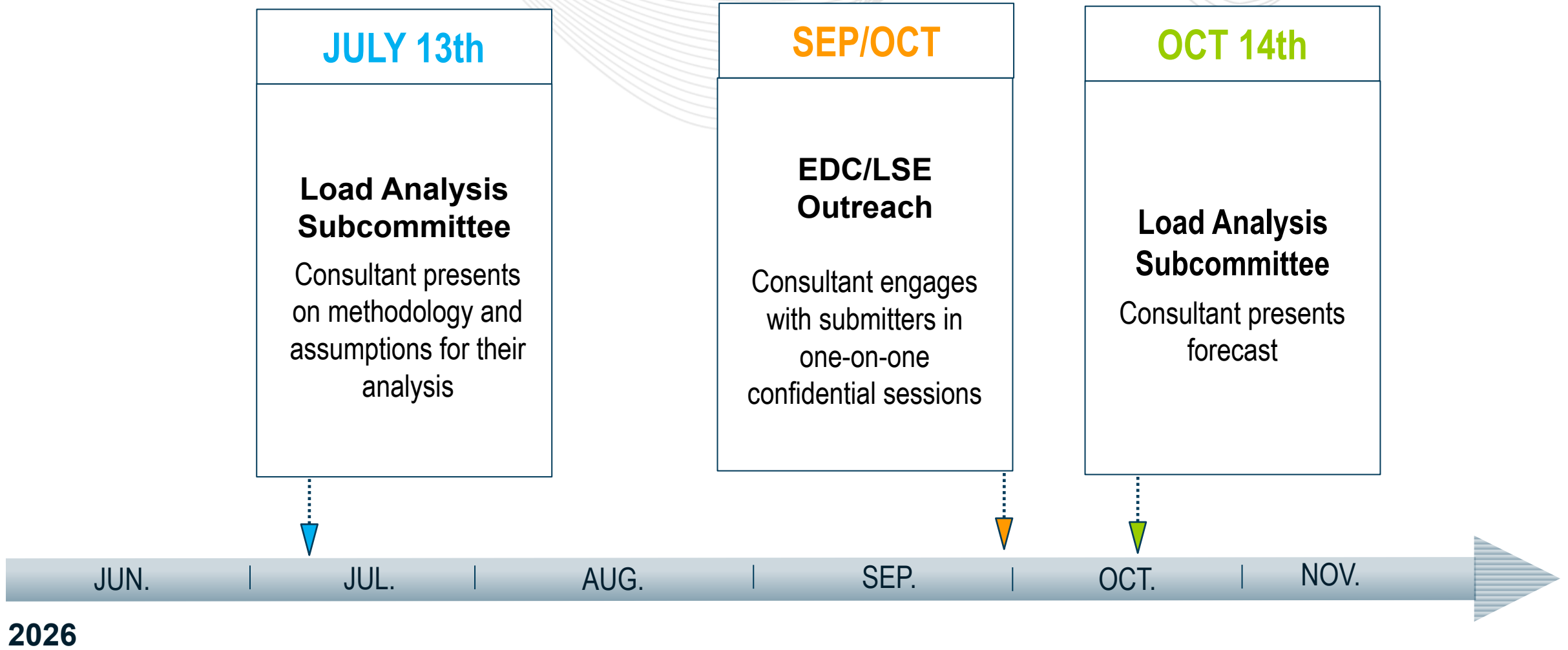
- July – Solicitation of Load Forecast Adjustment with Template
  - More **detailed template** with entries for state review, existing, and planned loads
- August - Email sent to [Load\\_Analysis\\_Team@pjm.com](mailto:Load_Analysis_Team@pjm.com) to set up a Secure Share account
- September – EDC/LSE Load Forecast Adjustments Provided to PJM
- September – Stakeholder Presentations to Load Analysis Subcommittee
- November/December – PJM Final Load Forecast Adjustments and Presentation at Load Analysis Subcommittee

Jan. 2027

2027 Load Forecast Published



- The LAS has been developing reforms to enhance the Large Load Adjustment (LLA) process
- *The [Board Decisional Letter on Critical Issue Fast Path – Large Load Additions](#):*
  - Recognizes the progress PJM staff and stakeholders made to enhance the LLA process
  - Directs PJM and stakeholders to implement further enhancements:
    - State review of large load additions
    - Addressing duplicative requests
    - **Use of additional third-party review**
    - Increased transparency
- **PJM, through an RFP, has selected Charles River Associates as the consultant to:**
  - **Review EDC/LSEs’ Large Load Adjustment submissions**
  - **Develop an independent Data Center (DC) forecast**



2026

SME/Presenter:  
Molly Mooney,

[Molly.Mooney@pjm.com](mailto:Molly.Mooney@pjm.com)

[Load\\_Analysis\\_Team@pjm.com](mailto:Load_Analysis_Team@pjm.com)

**Large Load Adjustment Request  
Timeline: 2027 Load Forecast**



**Member Hotline**

(610) 666 – 8980

(866) 400 – 8980

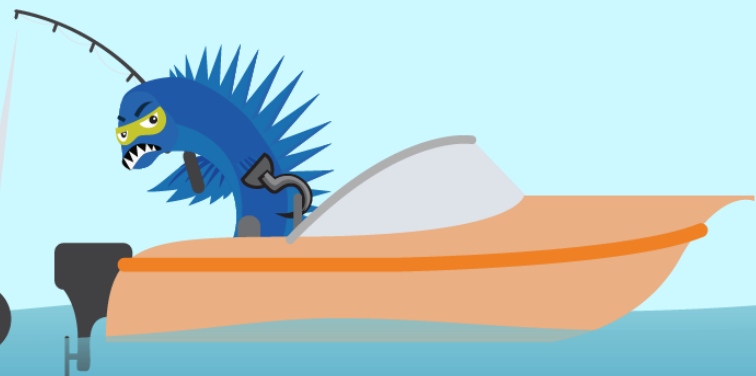
[custsvc@pjm.com](mailto:custsvc@pjm.com)

**PROTECT THE  
POWER GRID**

**THINK BEFORE  
YOU CLICK!**



**BE ALERT TO  
MALICIOUS PHISHING  
EMAILS**



**Report suspicious email activity to PJM.  
Call (610) 666-2244 or email [it\\_ops\\_ctr\\_shift@pjm.com](mailto:it_ops_ctr_shift@pjm.com)**