

PSEG 2026

Submission of Supplemental Projects for Inclusion in the Local Plan

Need Number: PSEG-2025-0002

Process Stage: Submission of Supplemental Project for inclusion in the Local Plan 12/19/2025

Previously Presented:

- Needs Meeting: SRRTEP - MA - 04/01/2025
- Solutions Meeting: SRRTEP - MA - 07/08/2025

Supplemental Project Driver:

- Equipment Condition/Performance/Risk
- Operational Flexibility and Efficiency
- Customer Service

Specific Assumption Reference:

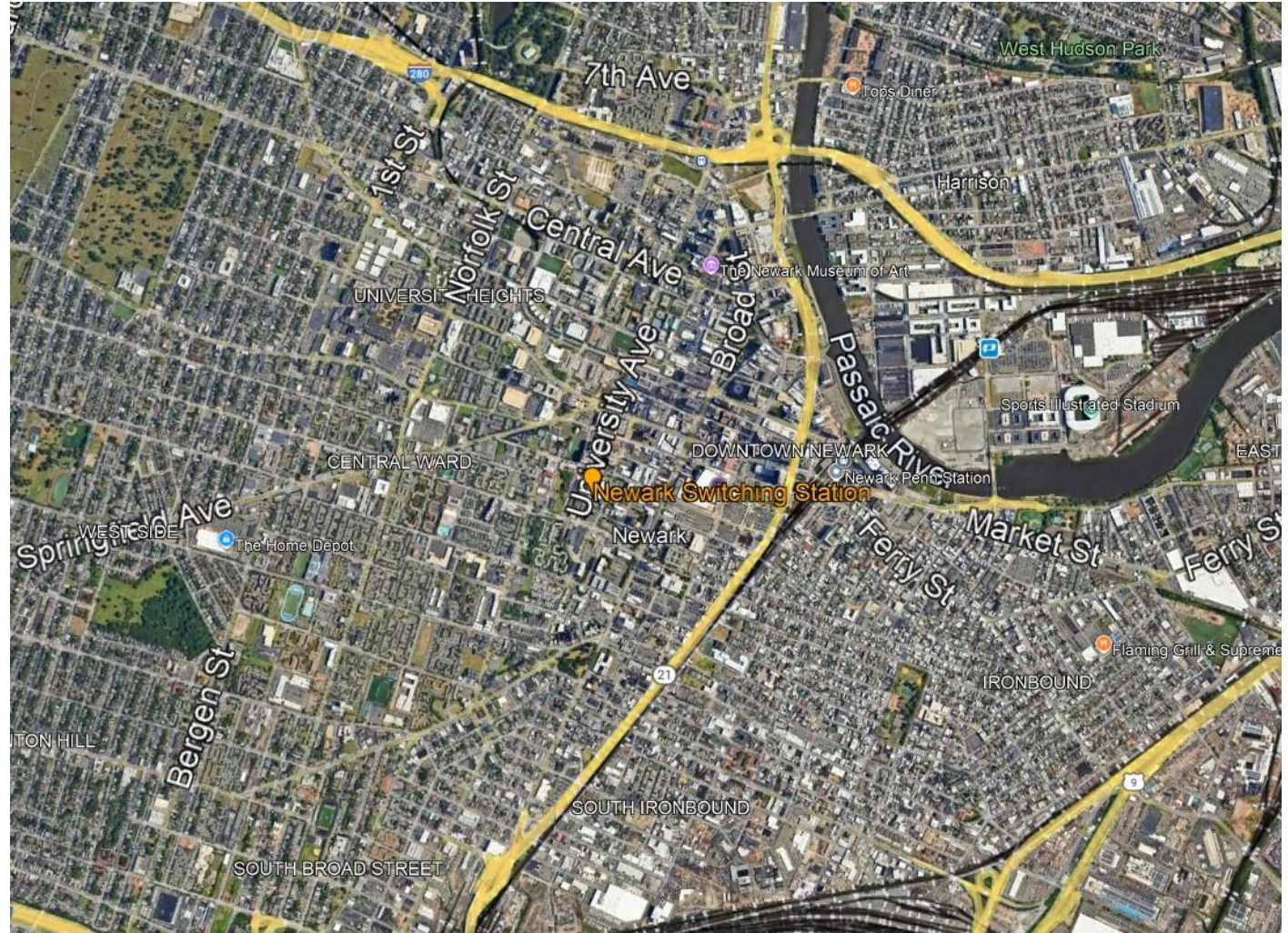
[PSE&G 2025 Annual Assumptions](#)

- Equipment Critically, Consequence of Failure
- Optimizing System Configuration, Minimize Outages
- System Standardization

Problem Statement:

- Networks fed from Newark switching station serve an area of high urban density, as a result the number of network protectors per circuit are exceeding the standardized network design limit resulting in decreased reliability and safety concerns.
- Network circuits fed from Newark Switch exceed the PSE&G network system design limit increasing the likelihood for mis-operation and customer outages.
- Newark Switching station existing spare circuits are not sufficient to resolve the excess to the network design limit.

Model: 2024 Series RTEP 20329 SUM_Final N-1 & N-1-1 cases



Need Number: PSEG-2025-0002

Process Stage: Submission of Supplemental Project for inclusion in the Local Plan 12/19/2025

Selected Solution:

Construct a new 230-13kV substation at McCarter Switching station.

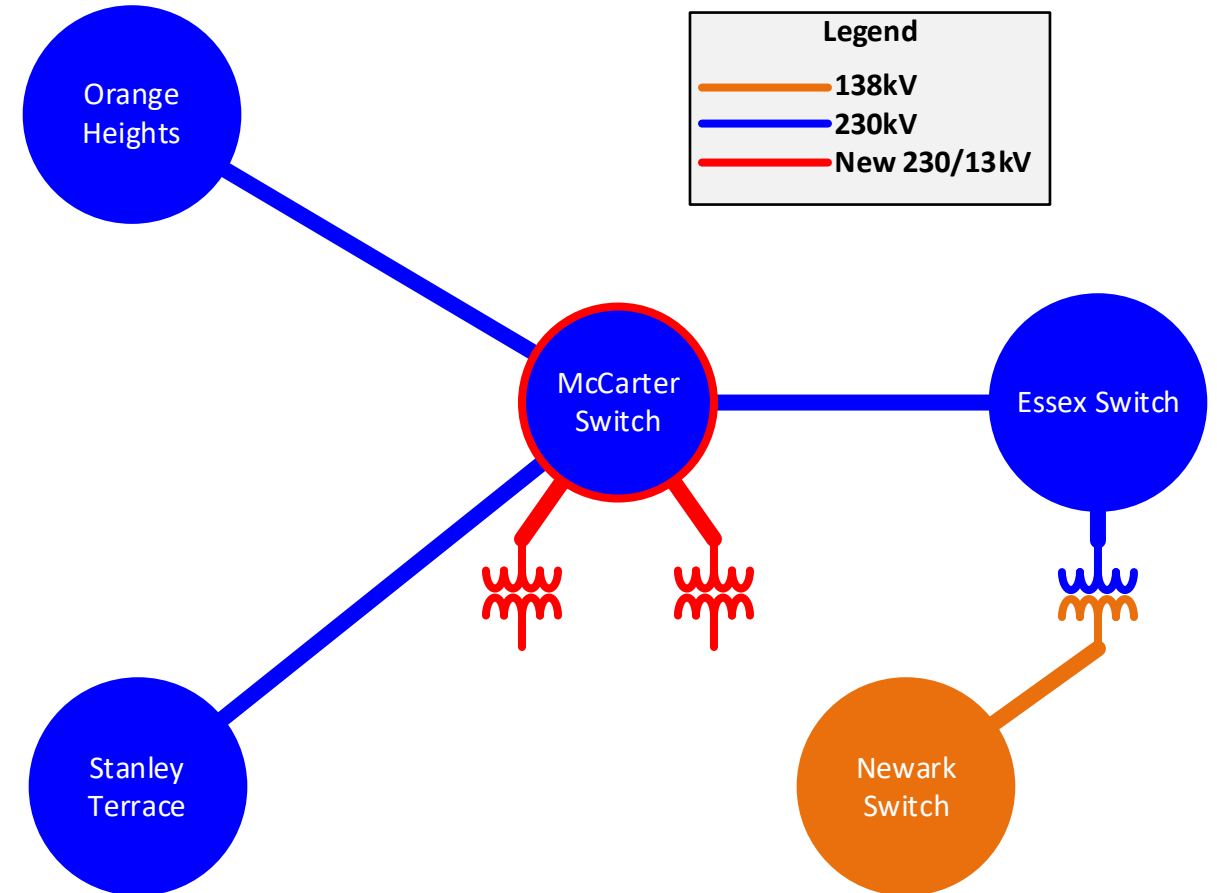
- Install two (2) 230-13kV transformers.
- Transfer several network circuits from Newark Switch to this new switchgear and reduce exceeding amount of network protectors to meet standardized design.

Estimated Cost: \$27.2M

Projected In-Service: 12/31/2029

Supplemental Project ID: s3735

Project Status: Engineering and Planning



Version History

- 12/19/2025 – V1 Posted (s3735)