

# Transmission Expansion Advisory Committee – PSE&G Supplemental Projects

April 1st, 2025

# Needs

Stakeholders must submit any comments within 10 days of this meeting in order to provide time necessary to consider these comments prior to the next phase of the M-3 process



# PSE&G Transmission Zone M-3 Process Newark Area

**Need Number:** PSEG-2025-0002

**Process Stage:** Need Meeting 04/01/2025

### Supplemental Project Driver:

- Equipment Material Condition, Performance and Risk
- Operational Flexibility and Efficiency
- Customer Service

**Specific Assumption Reference:**

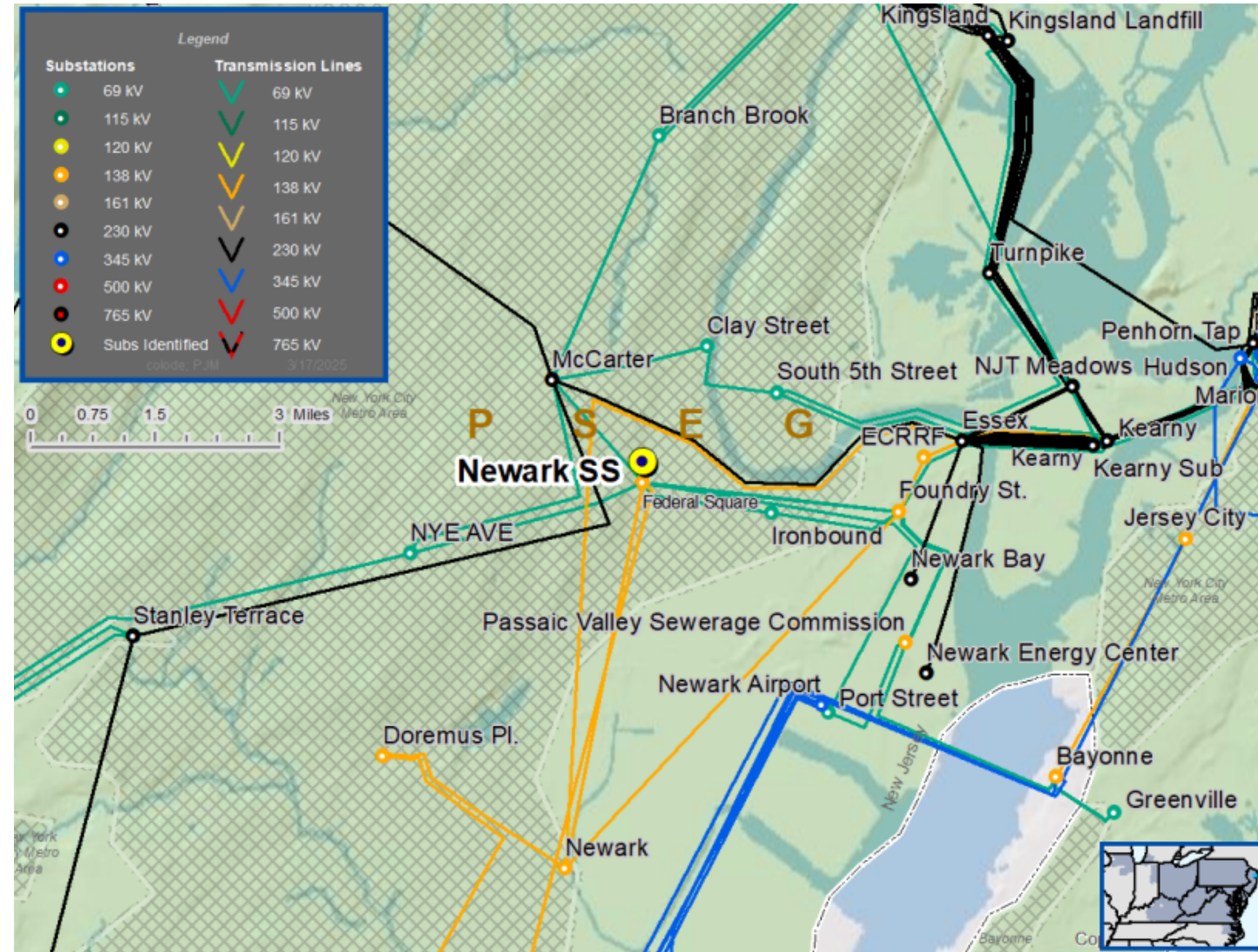
## PSE&G 2025 Annual Assumptions

- Equipment Criticality, Consequence of Failure
- Optimizing system configuration, minimize outages.
- System Standardization

### Problem Statement:

- Networks fed from Newark switching station serve an area of high urban density, as a result the number of network protectors per circuit are exceeding the standardized network design limit resulting in decreased reliability and safety concerns.
  - Network circuits fed from Newark Switch exceed the PSE&G network system design limit increasing the likelihood for misoperation and customer outages.
  - Newark Switching station existing spare circuits are not sufficient to resolve the excess to the network design limit.

**Model:** 2024 Series RTEP 2029 SUM\_Final N-1 & N-1-1 cases



# Questions?



# Appendix

# High level M-3 Meeting Schedule

## Assumptions

Activity	Timing
Posting of TO Assumptions Meeting information	20 days before Assumptions Meeting
Stakeholder comments	10 days after Assumptions Meeting

## Needs

Activity	Timing
TOs and Stakeholders Post Needs Meeting slides	10 days before Needs Meeting
Stakeholder comments	10 days after Needs Meeting

## Solutions

Activity	Timing
TOs and Stakeholders Post Solutions Meeting slides	10 days before Solutions Meeting
Stakeholder comments	10 days after Solutions Meeting

## Submission of Supplemental Projects & Local Plan

Activity	Timing
Do No Harm (DNH) analysis for selected solution	Prior to posting selected solution
Post selected solution(s)	Following completion of DNH analysis
Stakeholder comments	10 days prior to Local Plan Submission for integration into RTEP
Local Plan submitted to PJM for integration into RTEP	Following review and consideration of comments received after posting of selected solutions

# Revision History

03/21/2025 - V1 – Original version posted to pjm.com