

Order 1920 Re-Evaluation

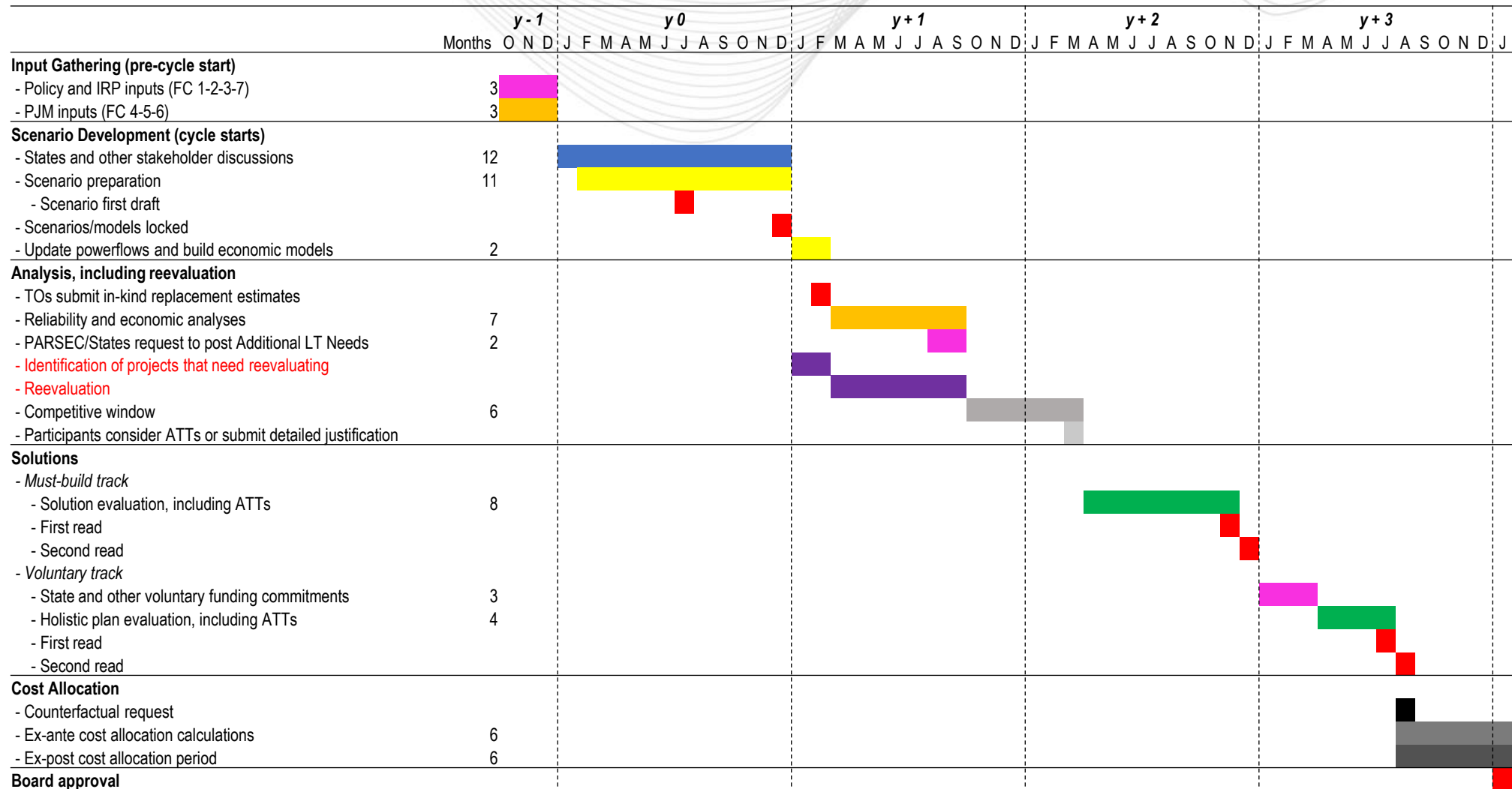
Brian Lynn
Principal Engineer

TEAC Special Session – Order 1920
April 10, 2025

- Order 1920 requires re-evaluation only in these circumstances:
 1. Development **DELAY**s which raise reliability concerns
 2. Significant **COST** increases
(only allowed in subsequent cycles following selection)
 3. Changes in **LAW**s and regulations
(such that a facility may fail the selection criteria)
 - In current cycle only if in-service date is in the second half of the 20-year planning cycle
 - Otherwise only in subsequent cycles
- Must designate a point after which no re-evaluation

- All three processes involve a stage where the project and its conditions are assessed on whether or not it triggers re-evaluation and a stage for the re-evaluation in the next window in the cycle
- Based on the first stage analysis, projects may not advance to the second stage
- Both stages can lead to keeping the project, replacing the project, coordination with other established planning processes and a combination of any/all

Why wait? - Background on LTRTP Cycle



- PJM may trigger re-evaluation below these triggers; these will be where it MUST be triggered
- Delay
 - Verification of the need/no material change to the need [includes Required In-Service Date (ISD)]
 - PJM will enforce Required ISDs for 1920 work
 - Is the updated Projected ISD past the (up-to-date) Required ISD?



Stage 1 Discussion Continued

- Cost
 - Verification of the need/no material change to the need
 - What is a significant cost?
 - PJM uses current year \$, PJM process to “update”
 - Updated value compared to trigger %
 - Consistent trigger % for all projects, even voluntary funded ones?

- Law

- Verification of the need/no material change to the need
- PJM will be open to inputs from stakeholders
- PJM has sole discretion in determination of whether a law or regulation has a significant impact on the identified need
- If the assessed impact is a cost or delay, it keys/hands off to that process
- If assessed impact is a potential reliability impact, moves to this/Law Stage 2
- If the project is no longer needed it may be removed

- Three Stage 2s
 - All very similar
 - To be reviewed in more detail at a later meeting (time constrained today)
- PJM + Stakeholders must designate a point after which there can/will be no re-evaluation for a project
 - Define a set of “long-term” permits/milestones
 - After 100% achieved, re-evaluation cannot proceed
 - 50-99% PJM discretion on whether re-evaluation can occur

Presenter:

Brian Lynn

Brian.Lynn@pjm.com

Order 1920 Re-Evaluation



Member Hotline

(610) 666-8980

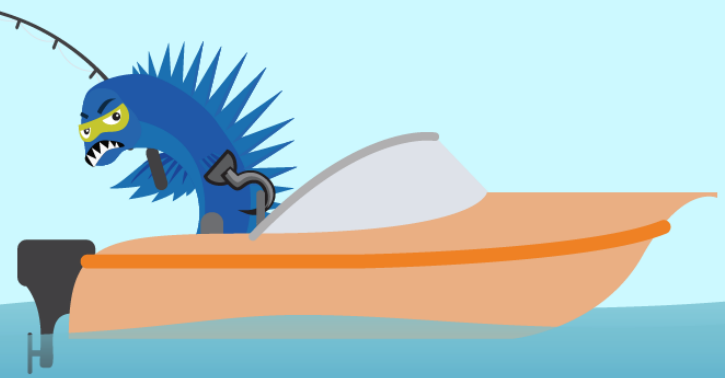
(866) 400-8980

custsvc@pjm.com

**PROTECT THE
POWER GRID**
**THINK BEFORE
YOU CLICK!**



**BE ALERT TO
MALICIOUS PHISHING
EMAILS**



Report suspicious email activity to PJM.
Call (610) 666-2244 or email it_ops_ctr_shift@pjm.com