



# FERC Order 1920 Interconnection Needs

TEAC Special Session – Order 1920  
April 10, 2025

- Order 1920 requires PJM to evaluate for selection in Order 1000 processes solutions to needs identified through the interconnection process that meet Order 1920 enumerated criteria (listed on the next slide)
- PJM will evaluate for selection these needs in the Order 1000 reliability planning process
  - In the interconnection process, PJM performs Generation Deliverability analysis to identify interconnection upgrades needed to deliver a candidate project's generation to the rest of the PJM system
  - In the Order 1000 reliability planning process PJM performs Generation Deliverability analysis to ensure the continued deliverability of that generation and is therefore the appropriate process to consider these needs

- As part of the competitive planning process, PJM will announce in the Transmission Expansion Advisory Committee (TEAC) its intention to solicit competitive solutions through the Order 1000 process to identified reliability planning needs.
- PJM will also evaluate for selection regional transmission facilities that address certain identified interconnection-related transmission needs identified through the interconnection process that meet FERC Order 1920 selection criteria.





# Order 1920 Identification Criteria for Interconnection Needs

(must meet all 5 criteria)

1. interconnection-related transmission needs repeatedly identified – in at least 2 interconnection queue cycles or at least 2 individual serial process studies
2. interconnection-related network upgrade identified must have a voltage of at least 200 kV AND an estimated cost of at least \$30M
3. interconnection request(s) driving transmission need have withdrawn and no more than five calendar years have passed between the date of an earlier interconnection request withdrawal and the date of a later interconnection request withdrawal
4. interconnection-related network upgrade identified not currently part of a GIA
5. interconnection-related transmission needs - 7 year look back period from each Order 1000 cycle. Do not need to evaluate an interconnection-related transmission need that has been evaluated in a previous Order 1000 cycle.

- Upon opening the competitive window, PJM will post the following:
  - Reliability criteria violations eligible for the competitive process
  - Identified interconnection-related transmission needs that meet Order 1920 criteria (see previous slide)
- PJM will evaluate for selection solutions that address reliability-driven criteria violations along with the identified interconnection-related transmission needs

## Presenters:

Stanley Sliwa

[Stanley.Sliwa@pjm.com](mailto:Stanley.Sliwa@pjm.com)

Edmund Franks

[Edmund.Franks@pjm.com](mailto:Edmund.Franks@pjm.com)

## FERC Order 1920 Interconnection Needs



### Member Hotline

(610) 666-8980

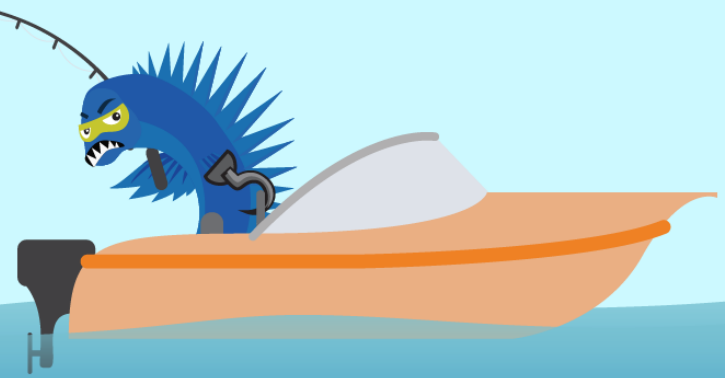
(866) 400-8980

[custsvc@pjm.com](mailto:custsvc@pjm.com)

**PROTECT THE  
POWER GRID**  
**THINK BEFORE  
YOU CLICK!**



**BE ALERT TO  
MALICIOUS PHISHING  
EMAILS**



**Report suspicious email activity to PJM.**  
Call (610) 666-2244 or email [it\\_ops\\_ctr\\_shift@pjm.com](mailto:it_ops_ctr_shift@pjm.com)