

Transmission Expansion Advisory Committee – PSE&G Supplemental Projects

July 8th, 2025

Solutions

Stakeholders must submit any comments within 10 days of this meeting in order to provide time necessary to consider these comments prior to the next phase of the M-3 process

Need Number: PSEG-2025-0002

Process Stage: Solutions Meeting 07/08/2025

Previously Presented: Need Meeting 04/01/2025

Supplemental Project Driver:

- Equipment Material Condition, Performance and Risk
- Operational Flexibility and Efficiency
- Customer Service

Specific Assumption Reference:

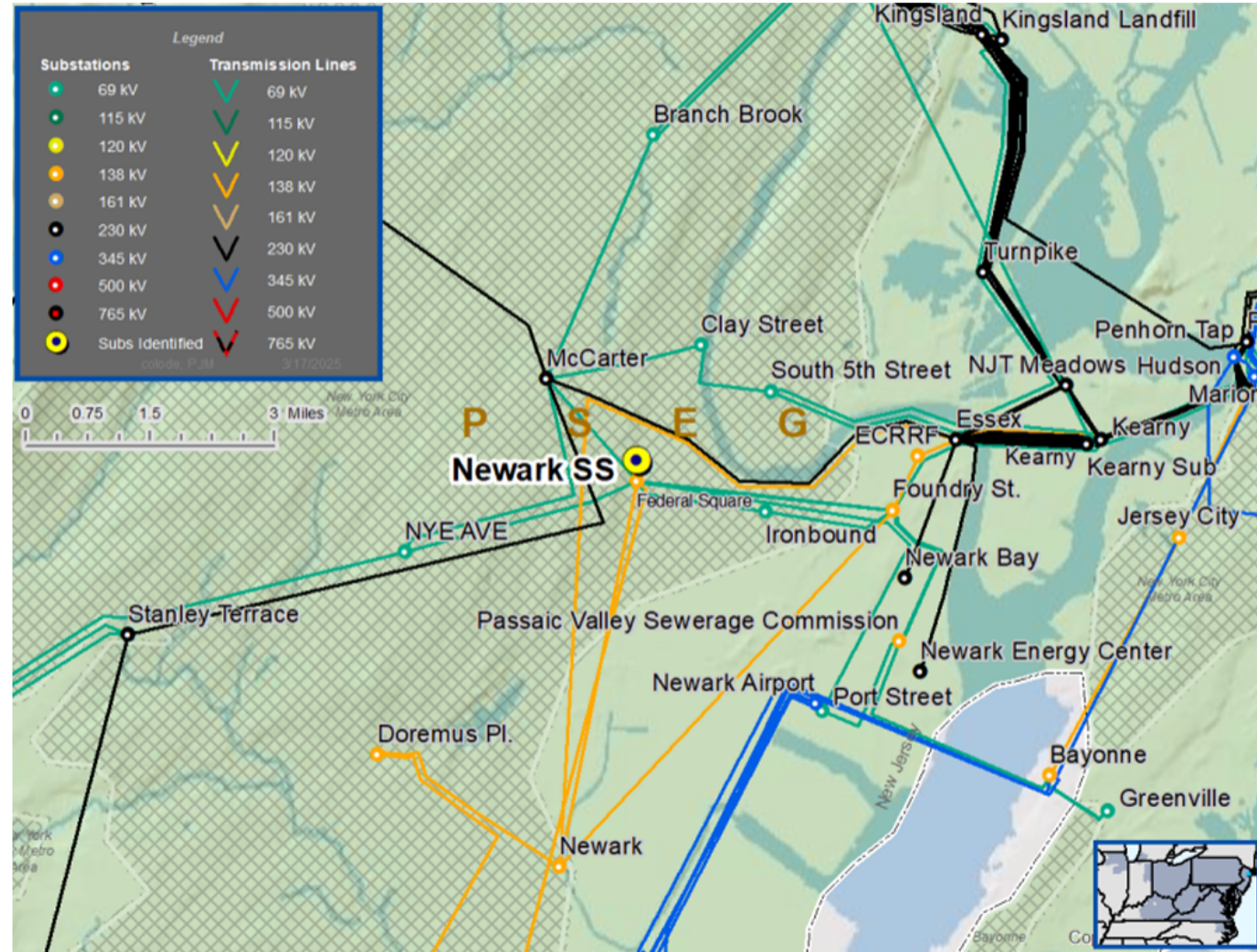
[PSE&G 2025 Annual Assumptions](#)

- Equipment Criticality, Consequence of Failure
- Optimizing system configuration, minimize outages.
- System Standardization

Problem Statement:

- Networks fed from Newark switching station serve an area of high urban density, as a result the number of network protectors per circuit are exceeding the standardized network design limit resulting in decreased reliability and safety concerns.
 - Network circuits fed from Newark Switch exceed the PSE&G network system design limit increasing the likelihood for mis-operation and customer outages.
 - Newark Switching station existing spare circuits are not sufficient to resolve the excess to the network design limit.

Model: 2024 Series RTEP 2029 SUM_Final N-1 & N-1-1 cases



Need Number: PSEG-2025-0002

Process Stage: Solutions Meeting 07/08/2025

Proposed Solution:

Construct a new 230-13kV substation at McCarter Switching station.

- Install two (2) 230-13kV transformers.
- Transfer several network circuits from Newark Switch to this new switchgear and reduce exceeding amount of network protectors to meet standardized design.

Estimated Cost: \$27.2M

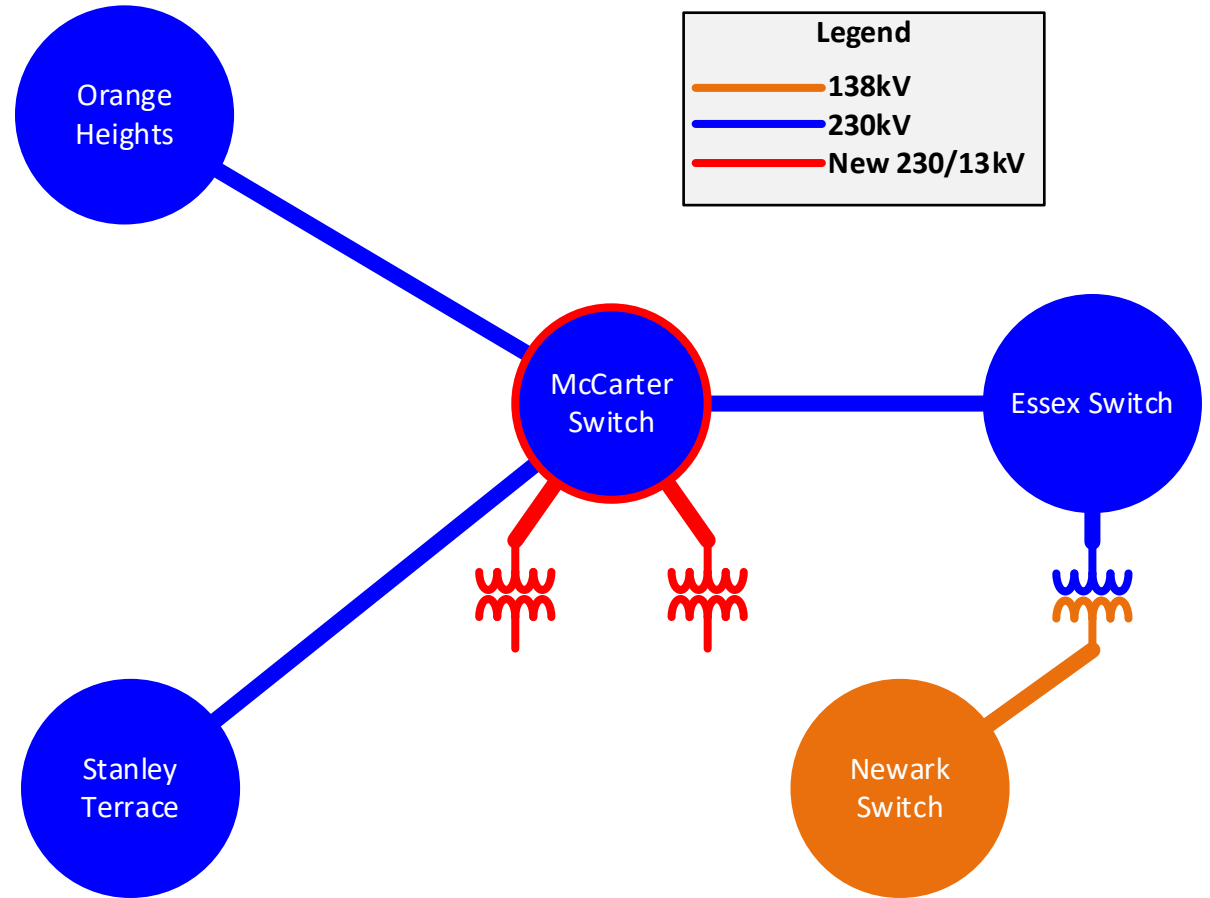
Alternative Considered:

Expand Newark Switch to include new switchgear to construct additional 13kV circuits.

Estimated Cost: N/A - This option was deemed infeasible due to insufficient space on site.

Projected In-Service: 12/2029

Project Status: Conceptual



Questions?



Appendix

High level M-3 Meeting Schedule

Assumptions

Activity	Timing
Posting of TO Assumptions Meeting information	20 days before Assumptions Meeting
Stakeholder comments	10 days after Assumptions Meeting

Needs

Activity	Timing
TOs and Stakeholders Post Needs Meeting slides	10 days before Needs Meeting
Stakeholder comments	10 days after Needs Meeting

Solutions

Activity	Timing
TOs and Stakeholders Post Solutions Meeting slides	10 days before Solutions Meeting
Stakeholder comments	10 days after Solutions Meeting

Submission of Supplemental Projects & Local Plan

Activity	Timing
Do No Harm (DNH) analysis for selected solution	Prior to posting selected solution
Post selected solution(s)	Following completion of DNH analysis
Stakeholder comments	10 days prior to Local Plan Submission for integration into RTEP
Local Plan submitted to PJM for integration into RTEP	Following review and consideration of comments received after posting of selected solutions

Revision History

6/x/2025 – V1 – Original version posted to pjm.com