

Transmission Expansion Advisory Committee – PSE&G Supplemental Projects

September 9, 2025

Needs

Stakeholders must submit any comments within 10 days of this meeting in order to provide time necessary to consider these comments prior to the next phase of the M-3 process



PSEG Transmission Zone M-3 Process Mount Laurel Area

Need Number: PSEG-2024-0004

Process Stage: Solution Meeting 09/09/2025

Previously Presented : Need Meeting 09/13/2024

Supplemental Project Driver:

- Customer Service

Specific Assumption Reference:

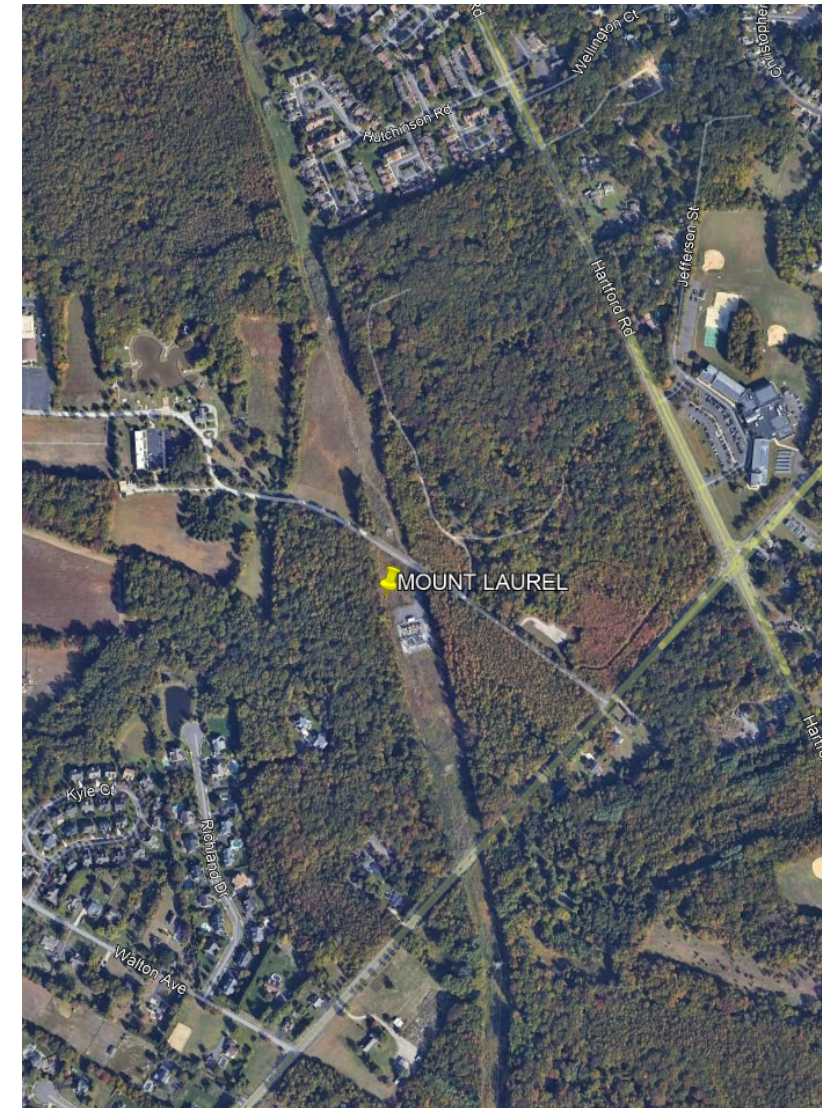
[PSEG 2024 Annual Assumptions](#)

- Localized Load Growth & Contingency Overloads

Problem Statement:

- Mount Laurel Substation in Mount Laurel area is a station with no additional station capacity.
 - Mount Laurel serves about 14,300 customers with a station load of 69.90MVA in 2022. The actual station capacity is 60.60MVA. Projected contingency overload is 115.3%.

Model: 2022 Series 2027 Summer RTEP 50/50





PSE&G Transmission Zone M-3 Process Mount Laurel Area

Need Number: PSEG-2024-0004

Process Stage: Solutions Meeting 09/09/2025

Proposed Solution:

At Creek Rd:

- Construct a 230-13kV Substation at PSEG owned property in the Mount Laurel Area.
 - Construct a 230kV substation.
 - Cut and loop Cox's Corner - Burlington 230kV circuit into new substation.
 - Install two (2) 230-13kV transformers.
 - **Estimated Cost: \$85.0M**

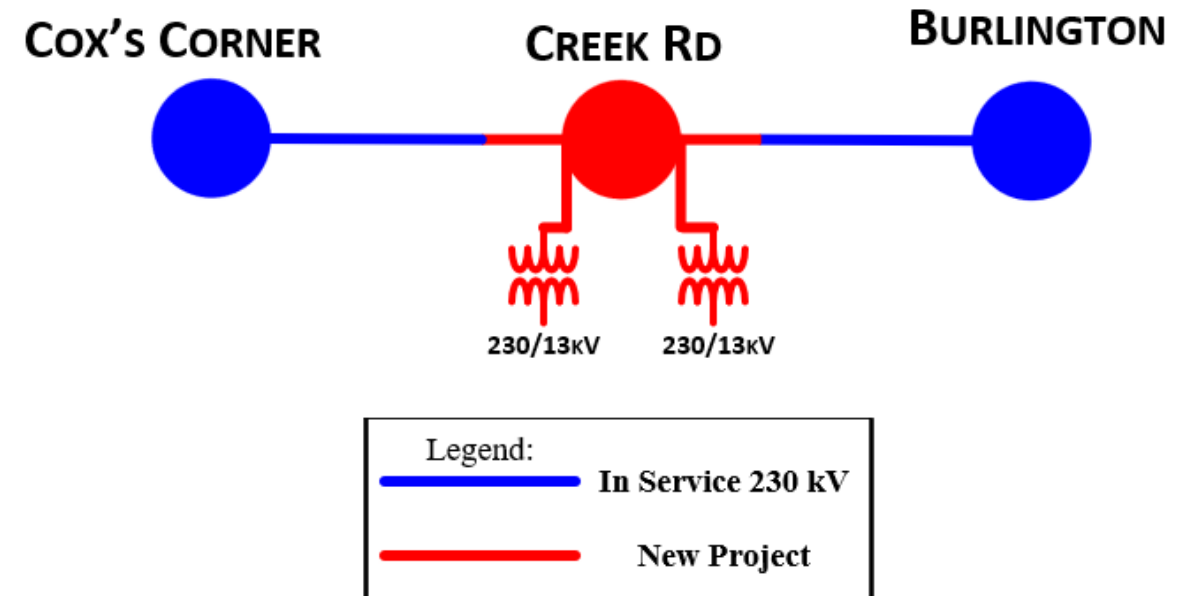
Alternative Considered:

At Briggs Rd:

- Construct a 69-13kV Substation in the Mount Laurel Area.
 - Purchase property and construct a 69kV substation at Briggs Rd.
 - Install two (2) 69-13kV transformers.
 - Cut and loop Mount Holly – Lumberton 69kV circuit into new substation.
 - Add 69kV position to the substation at Cox's Corner.
 - Construct one (1) new 69kV line from Cox's Corner to new substation.
 - **Estimated Cost: \$129.7M**

- **Projected In-Service:** 05/2031

Project Status: Conceptual



Questions?



Appendix

High level M-3 Meeting Schedule

Assumptions

Activity	Timing
Posting of TO Assumptions Meeting information	20 days before Assumptions Meeting
Stakeholder comments	10 days after Assumptions Meeting

Needs

Activity	Timing
TOs and Stakeholders Post Needs Meeting slides	10 days before Needs Meeting
Stakeholder comments	10 days after Needs Meeting

Solutions

Activity	Timing
TOs and Stakeholders Post Solutions Meeting slides	10 days before Solutions Meeting
Stakeholder comments	10 days after Solutions Meeting

Submission of Supplemental Projects & Local Plan

Activity	Timing
Do No Harm (DNH) analysis for selected solution	Prior to posting selected solution
Post selected solution(s)	Following completion of DNH analysis
Stakeholder comments	10 days prior to Local Plan Submission for integration into RTEP
Local Plan submitted to PJM for integration into RTEP	Following review and consideration of comments received after posting of selected solutions

Revision History

7/25/2025 – V1 – Original version posted to pjm.com